

HUAWEI U8850-1

User Guide

1 Read Before Proceeding

1.1 Safety Precautions

Please read the safety precautions carefully to ensure the correct use of your phone.



Do not crash, throw, or puncture your phone. Avoid falling, squeezing, and bending of your phone.



Do not use your phone in a moist environment, such as the bathroom. Prevent your phone from being soaked or washed in liquid.



Do not switch on your phone when it is prohibited to use phones or when the phone may cause interference or danger.



Do not use your phone while driving.



Follow any rules or regulations in hospitals and health care facilities. Switch off your phone near medical apparatus.



Switch off your phone in aircraft. The phone may cause interference to control equipment of the aircraft.



Switch off your phone near high-precision electronic devices. The phone may affect the performance of these devices.



Do not attempt to disassemble your phone or its accessories. Only qualified personnel are allowed to service or repair the phone.



Do not place your phone or its accessories in containers with a strong electromagnetic field.



Do not place magnetic storage media near your phone. Radiation from the phone may erase the information stored on them.



Do not put your phone in a high-temperature place or use it in a place with flammable gas such as a gas station.



Keep your phone and its accessories away from children. Do not allow children to use your phone without guidance.



Use only approved batteries and chargers to avoid the risk of explosions.



Observe any laws or regulations on the use of wireless devices. Respect other's privacy and legal rights when using your wireless device.



Strictly follow the relevant instructions of this manual while using the USB cable. Otherwise, your phone or PC may be damaged.

1.2 Legal Notice

Copyright © Huawei Technologies Co., Ltd. 2012. All rights reserved.

No part of this document may be reproduced or transmitted in any form or by any means without prior written consent of Huawei Technologies Co., Ltd.

The product described in this manual may include copyrighted software of Huawei Technologies Co., Ltd. and possible licensors. Customers shall not in any manner reproduce, distribute, modify, decompile, disassemble, decrypt, extract, reverse engineer, lease, assign, or sublicense the said software, unless such restrictions are prohibited by applicable laws or such actions are approved by respective copyright holders under licenses.

Trademarks and Permissions



, and **HUAWEI** are trademarks or registered trademarks of Huawei Technologies Co., Ltd.

Other trademarks and product, service and company names mentioned are the property of their respective owners.

Notice

Some features of the product and its accessories described herein rely on the software installed, capacities and settings of local network, and may not be activated or may be limited by local network operators or network service providers. Thus the descriptions herein may not exactly match the product or its accessories you purchase.

Huawei Technologies Co., Ltd. reserves the right to change or modify any information or specifications contained in this manual without prior notice or obligation.

Huawei Technologies Co., Ltd. is not responsible for the legitimacy and quality of any products that you upload or download through this phone, including but not limited to the text, pictures, music, movies, and non-built-in software with copyright protection. Any consequences arising from the installation or usage of the preceding products on this phone shall be borne by yourself.

NO WARRANTY

THE CONTENTS OF THIS MANUAL ARE PROVIDED "AS IS". EXCEPT AS REQUIRED BY APPLICABLE LAWS, NO WARRANTIES OF ANY KIND, EITHER EXPRESS OR IMPLIED, INCLUDING BUT NOT LIMITED TO, THE IMPLIED WARRANTIES OF MERCHANTABILITY

AND FITNESS FOR A PARTICULAR PURPOSE, ARE MADE IN RELATION TO THE ACCURACY, RELIABILITY OR CONTENTS OF THIS MANUAL.

TO THE MAXIMUM EXTENT PERMITTED BY APPLICABLE LAW, IN NO CASE SHALL HUAWEI TECHNOLOGIES CO., LTD. BE LIABLE FOR ANY SPECIAL, INCIDENTAL, INDIRECT, OR CONSEQUENTIAL DAMAGES, OR LOST PROFITS, BUSINESS, REVENUE, DATA, GOODWILL OR ANTICIPATED SAVINGS.

Import and Export Regulations

Customers shall comply with all applicable export or import laws and regulations and will obtain all necessary governmental permits and licenses in order to export, re-export or import the product mentioned in this manual including the software and technical data therein.

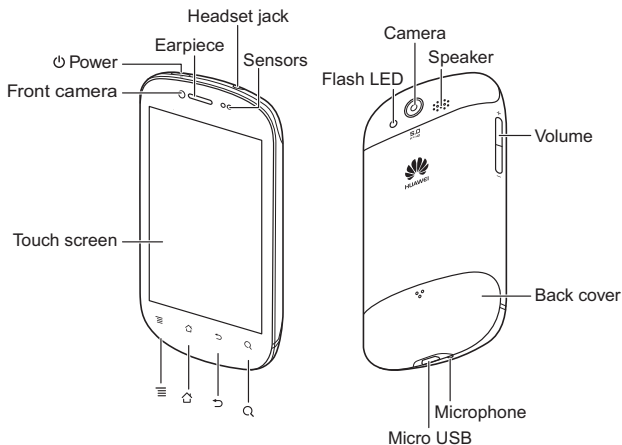
2 Getting to Know Your Phone

2.1 Phone View

2.1.1 Phone at a Glance

■ **Note:**

All the pictures in this guide are for your reference only. The actual appearance and display features depend on the phone you purchase.



■ **Note:**

When applying protective film on the phone, use the protective film with good transmittance.

2.1.2 Key Functions

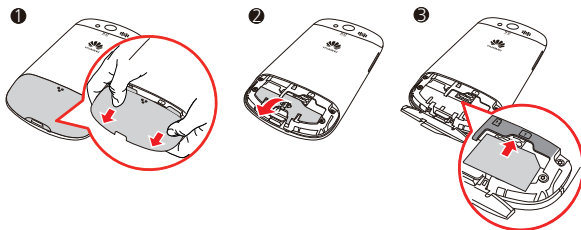
-
- | | |
|-------|--|
| ⏻ | <ul style="list-style-type: none">• Press to power on your phone.• Press and hold to open the Phone options menu.• Press to lock the screen when your phone is active. |
| <hr/> | |
| ☰ | <ul style="list-style-type: none">• Touch to open the menu on an active screen. |
| <hr/> | |
| 🏠 | <ul style="list-style-type: none">• Touch to open Complete action using, then select Launcher or SPB Shell 3D as the screen displaying style.• Touch and hold to show the most recently used applications. |
-

-
- Touch to return to the previous screen.
- ↶
- Touch to exit any application you are running.
 - Touch to hide the keyboard.
-
- 🔍
- Touch to open Google search for searching your phone and the web.
 - Touch and hold to open Google search by voice.
-

2.2 Installing Your Phone

2.2.1 Installing the SIM/USIM Card

Follow the steps below to install the SIM/USIM card.



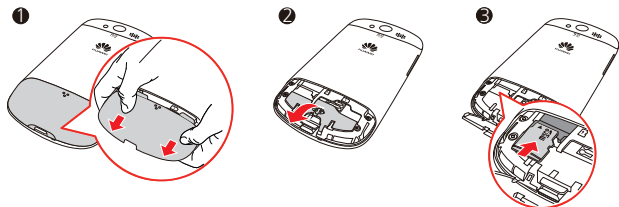
1. Remove the back cover.
2. Flip the compartment cover to open it.
3. Insert the SIM card.

■ **Note:**

Before installing the SIM /USIM card, power your phone off, to prevent the data stored in the SIM /USIM card from being lost.

2.2.2 Installing the microSD Card

You need a microSD card to use the camera applications and store photos, music, videos and other data.



1. Remove the back cover.

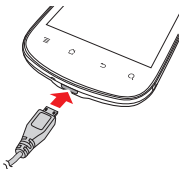
2. Insert the microSD card until it clicks into place.


■ **Note:**

Before installing the microSD card, power your phone off, to prevent the data stored in the microSD card from being lost.

2.2.3 Charging the Battery

The mobile phone comes with a built-in battery. Connect the charger to the mobile phone using the supplied USB cable to charge the battery.



If your phone is charged when it is powered on, the battery icon on the notifications bar shows the charging status. When the battery icon changes to , it indicates that your phone is fully charged.

■ **Note:**

When the mobile phone cannot be turned on because of the exhausted battery, please charge the battery with the charger and wait for several minutes until the battery charging image appears.

2.2.4 Important Information About the Battery

- If the battery has not been used for a long period of time, you may not be able to power on your phone immediately after you begin charging the battery. Allow the battery to charge for a few minutes with the phone powered off before attempting to power on the phone.
- Rechargeable batteries have a limited number of charge cycles and may eventually need to be replaced. The battery isn't user replaceable; it can be replaced only by an authorized service provider.
- Using data services increases demand on the battery.
- The time required to charge the battery depends on the ambient temperature and the age of the battery.
- When the battery is low on power, the phone plays an alert and displays a prompt. When battery power is almost exhausted, your phone will power off automatically.

2.2.5 Battery Saving Tips

Battery life depends on network features and how you use your phone.

Try the following to conserve battery power:

- When you do not need 3G services, set your phone to connect to a 2G network.
- Set the screen timeout to automatically switch the screen off when the phone is not in use.
- Lower the screen brightness.
- Turn off Bluetooth when not in use.

- Disable GPS satellites when not in use.
- Lower the volume.
- Disable data services when not in use.

2.3 Turning the Phone On or Off

2.3.1 Turning the Phone On


Press and hold  until the phone vibrates.

2.3.2 Setting Up Your Phone



The first time you turn on your phone, a setup wizard appears. Follow the on-screen instructions to set up your phone.

Do finish the original setup of your phone at one time. If the setup wizard is cancelled or closed during the wizard configuration, the wizard won't be reopen unless reset your phone in **Settings > Privacy > Factory data reset > Reset phone**. You can see "12.8 Resetting Your Mobile Phone" on page 53 for more details.

2.3.3 Turning the Phone Off


1. Press and hold  to display the **Phone options** menu.
2. Touch **Power off**.
3. Touch **OK**.

■ Note:


If some phone functions are not working correctly or the phone cannot be powered on or powered off, try restarting the phone: Press the Power key  and the Volume up key  and hold for at least five seconds. Release the keys. The phone will then restart.

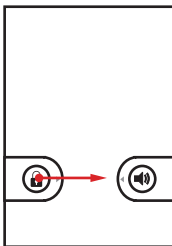
2.4 Locking and Unlocking the Screen

2.4.1 Locking the Screen

- When your phone is on, press  to lock the screen. When the screen is locked, you can still receive messages and calls.
- If your mobile is idle for a while, the screen will lock automatically.


2.4.2 Unlocking the Screen

1. Press  to wake up the screen.
2. Drag the lock icon from left to right to unlock the screen.



2.5 Setting the Mode


2.5.1 Setting the Phone to Silent Mode

1. Press and hold  to display the **Phone options** menu.
2. Touch **Silent mode**.

Or, on a locked screen, drag the speaker icon from right to left.

To undo silent mode, repeat the steps above. Or, on a locked screen, drag the vibrate icon from right to left.

2.5.2 Setting the Phone to Airplane Mode

1. Press and hold  to display the **Phone options** menu.
2. Touch **Airplane mode**.

To undo airplane mode, repeat the steps above.

2.6 Home Screen


2.6.1 Setting the Default Home Screen

Your mobile phone has two default home screens: Launcher and SPB Shell 3D.

To switch between default home screens, do the following:

1. Touch .
2. Touch either **Launcher** or **SPB Shell 3D**.

To set one of home screen as the default screen, do the following:

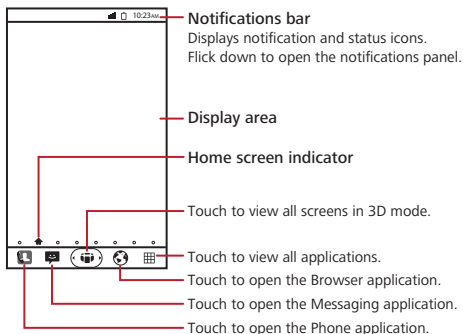
1. Touch .
2. Touch **Use by default for this action** to select the check box.
3. Touch either **Launcher** or **SPB Shell 3D** to set the selected home screen as the default.

■ **Note:**

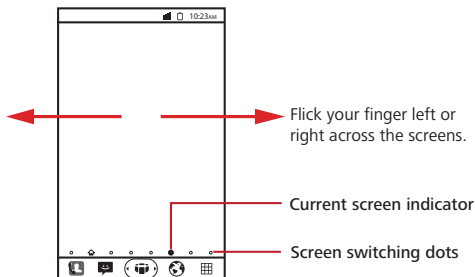
After doing this action, the Select Home screen window will no longer appear. You can touch **Settings > Applications > Manage applications > All > Launcher/SPB Shell 3D > Clear defaults** to clear default.

2.6.2 SPB Shell 3D Home Screen

From the Home screen, you can quickly access common features and view notifications of missed calls, received messages, check battery and connection status.








2.6.3 Viewing Other Parts of the Home Screen



2.6.4 Notification and Status Icons

	Call in progress		EDGE connected
	Call forwarding on		EDGE in use
	Call in progress using a Bluetooth device		GPRS connected
	Call on hold		GPRS in use
	Missed call		GPS connected
	New message		Wi-Fi connected
	New voicemail		Wi-Fi in use
	New Gmail message		Bluetooth connected
	New Email message		New Talk message
	Battery is fully charged		New battery replacement needed
	Battery level		Battery temperature is too high, cannot charge battery
	Charging error		Battery temperature is too low, cannot charge battery

	Alarm enabled		Download in progress
	Sync in progress		Music playing
	Connected to PC		

2.6.5 Notifications Panel

Open the notifications panel to view ongoing phone activities or more notifications.

Opening the Notifications Panel




1. Touch and hold the notifications bar, then flick down to open the notifications panel.
2. Do any of the following:
 - Touch a notification to open the related application.
 - Touch **Clear** to clear all notifications.

Closing the Notifications Panel




Touch and hold the bottom of the panel, then flick up to close it.

2.6.6 Customizing the Home Screen

Adding a New Screen Panel

1. Touch  to view the Home Screen in 3D mode.
2. Touch  to enter 3D edit screen mode.
3. Drag an available screen panel from below towards the home screen deck.
4. Touch and hold a screen panel to rearrange its position.
5. Touch  to exit 3D edit screen mode.



Removing a Screen Panel

1. Touch  to view the Home Screen in 3D mode.
2. Touch  to enter 3D edit screen mode.
3. Touch and hold a screen panel and drag it out from the home screen deck.
4. Touch  to exit 3D edit screen mode.

Adding a New Screen Item

1. Touch and hold a blank area on the Home screen until the **Add to Home screen** menu is displayed.
2. Select an item to add to the Home screen.

Removing a Screen Item

1. Touch and hold the item on the Home screen until the item enlarges and becomes moveable. This is the edit screen mode.
2. Without lifting your finger, drag the item to the trash can.
3. When the item turns red, release your finger to remove it from the Home screen.
4. Touch  or  to close the edit screen mode.

Moving a Screen Item

1. Touch and hold the item on the Home screen until the item enlarges and becomes moveable. This is the edit screen mode.
2. Without lifting your finger, drag the item to the desired position on the Home screen.
3. Release your finger to complete move.
4. Touch ✓ or ↶ to close the edit screen mode.

2.6.7 Changing the Wallpaper

1. On the Home screen, touch ≡ > **Wallpaper**.
2. In the **Select wallpaper from** menu, touch **Live wallpapers**, **My Gallery** or **Wallpapers**.
3. Select the picture you want to set as the wallpaper.

3 Contacts


Contacts is your phonebook that lets you save information such as names, phone numbers, email addresses, pictures, etc.

3.1 Opening Contacts

Do one of the following to open **Contacts**:

- Touch  > **Contacts**.
- Touch  > **Contacts**.

3.2 Adding Contacts

1. In the contact list, touch  > **New contact**.
2. Enter the contact's name, phone number, and other information.
3. When you are finished, touch **Done** to save the contact information.



3.2.1 Adding a Contact to Favorites

In the contact list, do one of the following:


- Touch and hold the contact you want to add to **Favorites**, then touch **Add to favorites**.
- Touch a contact, then touch the star to the right of the contact's name. The star is lit.

3.3 Importing and Exporting Contacts


3.3.1 Importing Contacts from the SIM Card

1. In the contact list, touch  > **Import/Export**.
2. Touch **Import from SIM card**.
3. Wait for the SIM card contents to be loaded. Select the contacts you want to import or touch  > **Import all** to import all contacts.


3.3.2 Importing Contacts from the Memory Card

1. In the contact list, touch  > **Import/Export**.
2. Touch **Import from SD card**.

3.3.3 Exporting Contacts to the Memory Card

1. In the contact list, touch  > **Import/Export**.
2. Touch **Export to SD card**.
3. Touch **OK** to confirm.

3.4 Searching for Contacts

1. In the contact list, touch  > **Search**.
2. Enter the name of the contact you want to search. As you type, matched contacts appear below the search box.

3.5 Editing Contacts

1. In the contact list, touch and hold the contact that you want to edit, then touch **Edit contact**.
2. Touch the text field of the information that you want to edit and make the necessary changes.
3. When you are finished, touch **Done** to save the contact information.

3.6 Deleting Contacts

1. In the contact list, touch and hold the contact that you want to delete, then touch **Delete contact**.
2. Touch **OK** to confirm.

3.6.1 Removing a Contact from Favorites

- In the contact list, touch the **Favorites** tab to view the favorites list. Touch and hold the contact you want to remove from **Favorites**, then touch **Remove from favorites**.
- In the contact list, touch a contact, then touch the colored star to the right of the contact's name to disable it.

3.7 Communicating with Contacts

From the **Contacts** or **Favorites** tab, you can quickly call or send messages to your contacts.

3.7.1 Connecting Through Quick Contact for Android

1. In the contact list, touch a contact's picture or picture frame to open Quick Contact for Android.
2. Touch the icon of the application that you want to use to communication with the contact.

■ **Note:**

Available application icons vary depending on the information you have entered for the contact, the applications on your phone, and the accounts that you have.

3.7.2 Communicating with a Contact

1. In the contact list, touch the contact that you want to communicate with.
2. On the contact's details screen, touch the icon to the right of the number to call or send messages.

4 Calling

To make a phone call, you can dial a number or touch a number from your contact list, a web page, or a document. When you are on a call, you can answer other incoming calls or send them to your voicemail box or set up conference calls with several participants.



4.1 Making a Call

To make a call, you can use the **Phone** application, or select a number from **Contacts** or **Call Log**.



When you are on a call, touch  to return to the Home screen and use other functions.

To return to the calling screen, flick the notifications bar down and touch **Missed call**.



4.1.1 Making a Call with the Phone Application

1. Touch  to display the dialer.
If you are on the **Contacts** or **Call log** screen, touch the **Phone** tab.
2. Touch the numeric keys to enter the phone number.
3. Touch  to make the call.
During a call, touch **Dialpad** to enter other numbers on the dialpad.

4.1.2 Making a Call from Contacts

1. Touch  > **Contacts** to display the contact list.
If you are on the **Phone** or **Call log** screen, touch the **Contacts** tab.
2. From the list, touch the contact that you want to call.
3. Touch  to dial the phone number.

4.1.3 Making a Call from Call Log

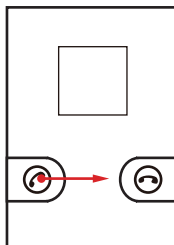
1. Touch  > **Call log**.
2. Touch  to the right of the log entry to dial.
★ **Tip:** Touch and hold a log entry to display the options menu.

4.2 Answering or Rejecting a Call

4.2.1 Answering an Incoming Call

When a call comes in, an incoming call message is displayed on the screen. If the caller is listed in **Contacts**, the contact's name and number appear on the screen.

To answer the call, drag  to the right.

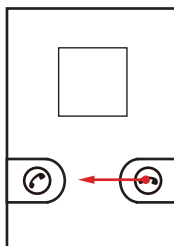


4.2.2 Ending a Call

Touch **End** to end a call.

4.2.3 Rejecting an Incoming Call

Drag  to the left to reject the call.



4.3 Other Operations During a Call

When a new call is received during a call, you can answer the new call and put the current one on hold, switch between calls, or set up a conference call.

4.3.1 Making a Conference Call

Conference call allows you to set up a phone conversation with multiple participants at the same time.

■ **Note:**

Conference call is network dependent. Contact your service provider for the availability of this feature and the maximum number of participants, if any.

1. Make the first call. Once connected, touch **Add call** to place the current call on hold.
2. Make the second call. Once connected, touch **Merge calls** to begin the conference call.
3. To add more calls, touch **Add call**, and repeat step 2.
4. To end the conference call and disconnect from everyone, touch **End**.

4.3.2 Switching Between Calls

1. While you are on the first call when the second call comes in, answer the incoming call. This automatically places the first call on hold.
2. To switch back to the first call, touch **Swap**.

4.3.3 Muting the Microphone

During a call, touch **Mute** to mute the microphone.

To undo mute, touch **Mute** again.

4.3.4 Turning the Speakerphone On or Off

During a call, touch **Speaker** to turn on the speakerphone.

To turn off the speakerphone, touch **Speaker** again.

4.3.5 Using Bluetooth Device

■ **Note:**

Before using this function, you must enable Bluetooth on your phone and pair with the Bluetooth device.

During a call, touch **Bluetooth** to use the Bluetooth device speaker.


To turn off the Bluetooth speaker, touch **Bluetooth** again.

4.4 Using Call Log


Call log contains the most recent calls you have dialed, received or missed.

In the call log list, touch an entry to view the call details and access other options.

4.4.1 Adding an Entry to Contacts

1. Touch  > **Call log**.
2. Touch and hold an entry.
3. Touch **Add to contacts**.
4. Touch **Create new contact** to add the phone number.

4.4.2 Removing an Entry from Call Log

1. Touch  > **Call log**.
2. Touch and hold an entry.
3. Touch **Remove from call log**.

5 Entering Text

5.1 Displaying the Keyboard Panel

Some applications, such as messaging, automatically displays the keyboard. In others, touch the text field to display the keyboard.

Touch  to hide the keyboard.

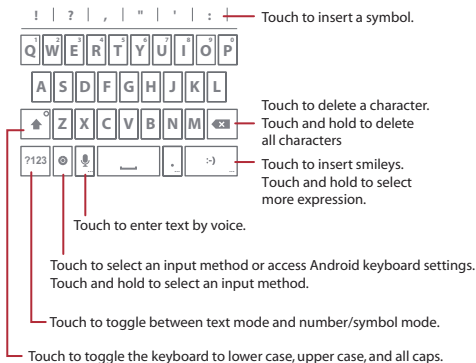
1. Touch and hold the space where you want to enter your text until the **Edit text** menu is displayed.
2. Touch **Input method**.
3. Select the input method.

The keyboard panel will be displayed automatically.

5.1.1 Changing the Input Method

1. Touch and hold a text field.
2. Touch **Input method**.
3. Touch the desired input method to use.

5.1.2 Using the Android Keyboard



■ Note:

The Voice key may not appear on the keyboard if voice input feature is disabled.

Go to **Settings > Language & keyboard > Android keyboard > Voice input** to select a voice input option.

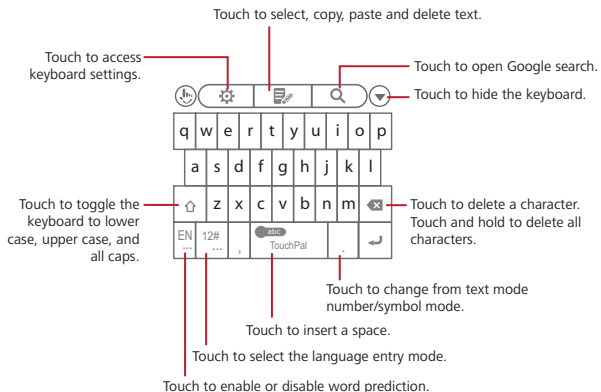
5.1.3 Using TouchPal Input

You can change the keyboard layout only when **TouchPal** is selected.

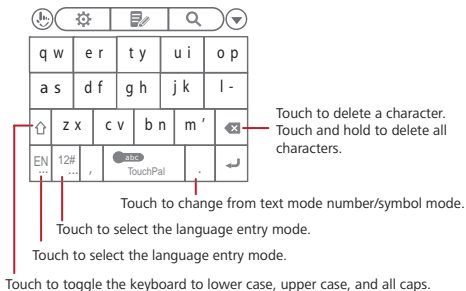
Three keyboard layouts are available: **Full QWERTY**, **12-key PhonePad**, and **CooTekT+keyboard**.

To change the keyboard layout, touch one edge of the keyboard, and then flick to the other edge.

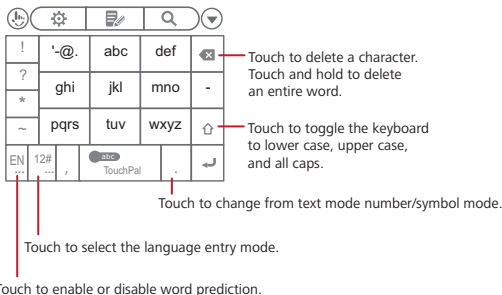
Full QWERTY



CooTekT+keyboard



TouchPal Multitap Keypad



If word prediction is enabled, touch each key once for a single letter to enter text. The phone displays matching words as you type. Touch a word to use it.

If word prediction is disabled, touch each key repeatedly until the desired letter is displayed.

5.1.5 Using the Landscape Keyboard

For a wider keyboard, turn the phone sideways to display the keyboard in landscape mode. Hold your phone on both hands and use both thumbs to type.

5.2 Customizing Keyboard Settings

1. Touch > **Settings** > **Language & keyboard**.
2. Touch the input method of the keyboard you want to customize.

5.3 Editing Text

5.3.1 Selecting Text

1. Touch and hold the text field of the text you want to select.
2. Touch **Select word** to select a portion of the text.
3. Swipe your finger across the text that you want to select.
4. Edit the text or touch and hold the text to open the options menu.

★ Tip:

To select the entire text, touch and hold the text field, then touch **Select all**.

5.3.2 Cut, Copy, and Paste Text

1. Touch and hold the text field of the text you want to cut or copy.
2. Touch **Select word** to select a portion of the text.

3. Touch and hold the text field, and select **Cut** or **Copy**.
4. Touch and hold the text field where you want to paste the text.
5. Touch **Paste**.

6 Email and Messaging


Use **Messaging** to exchange text (SMS) and multimedia (MMS) messages. Use **Email** to send and receive email messages using Internet email or Exchange server accounts.

6.1 Text and Multimedia Messages

A text message can only contain letters, numbers, and symbols.



6.1.1 Creating and Sending Text Messages

A text message can only contain letters, numbers, and symbols. A multimedia message can contain image, audio, or video files.



1. On the Home Screen, touch  > **New message**.
2. In the **To** field, enter a phone number or a contact name.
As you type, matching contacts appear. You can touch a contact or continue typing.
3. Touch the composition text box and type your message.
4. When you are finished, touch **Send**.

6.1.2 Creating and Sending Multimedia Messages

A multimedia message can contain image, audio, or video files. You can attach media files saved in the memory card or capture pictures or record audio or videos to attach.

1. On the Home Screen, touch  > **New message**.
2. In the **To** field, enter a phone number, a contact name, or an email address.
As you type, matching contacts appear. You can touch a contact or continue typing.
3. Touch the composition text box and type your message.
4. Touch  to display the options panel.
 - To add a message subject, touch **Add subject**. Your message is now in multimedia message mode.
 - To add a picture, music, or video file, touch **Attach**.
 - To insert smileys, touch **Insert smiley**.
5. When the message is ready to be sent, touch **Send MMS**.

Adding a Slideshow

1. On the message editing screen, touch  > **Attach > Slideshow**.
2. Touch a slide to edit it.
3. Touch  to open the following options :
 - **Preview**: To preview the slideshow.
 - **Add picture**: To add a picture to the sildeshow.
 - **Capture picture**: To capture a picture to add to the slideshow.
 - **Add music**: To add music to the slideshow.
 - **Add video**: To add a video to the slideshow.

- **More > Add slide:** To add another slide.
 - **More > Duration:** To set the duration per slide.
 - **More > Layout:** To select the text layout in the slideshow.
4. Touch **Done** to complete the slideshow and return to the multimedia message screen.
 5. To modify your multimedia message, touch **Replace picture** or **Remove slide**. When the message is ready to be sent, touch **Send MMS**.

6.1.3 Opening and Viewing Messages

When you send and receive messages from a contact, these messages are grouped together as a message thread. A message thread looks like an exchanged conversation.

1. In the message list, touch the message thread to open it.
2. Touch a message to view it.

6.1.4 Replying to Messages

1. In the message list, touch the message thread to open it.
2. Touch the composition text box and type your message.
3. When you are finished, touch **Send**.

6.1.5 Forwarding Messages

1. In the message list, touch the message thread to open it.
2. Touch and hold the message that you want to forward.
3. Touch **Forward**.
4. Enter the recipient and complete your message, then touch **Send**.

6.1.6 Deleting Messages


Deleting a Message

1. In the message list, touch the message thread to open it.
2. Touch and hold the message that you want to delete.
3. Touch **Delete message**.
4. Touch **Delete** to confirm.

Deleting a Message Thread

1. In the message list, touch and hold the message thread that you want to delete.
2. Touch **Delete thread**.
3. Touch **Delete** to confirm.

Deleting All Message Threads

1. In the message list, touch  > **Delete threads**.
2. Touch **Delete** to confirm.

6.1.7 Customizing Message Settings


In the message list, touch  > **Settings** to customize the message settings.

6.2 Email

You can send and receive emails on your phone just as you do with a computer. You can use your Internet email account, such as Yahoo!, Hotmail, AOL, or other services on your phone.




6.2.1 Setting Up an Email Account

When using **Email** for the first time, the setup wizard will guide you to set up an account.


1. Touch  > **Email**.
2. After entering your email address and password, touch **Next** to automatically retrieve mail server settings. Or touch **Manual setup** to set the mail server yourself.
■ **Note:** For manual setup, contact your email service provider for the required parameters to complete setup.
3. Enter the account name and the name to be displayed on every emails you send. The phone will automatically retrieve the email settings.
4. Touch **Done**.

6.2.2 Adding Other Email Accounts

After the initial setup, you can still add other email accounts.


1. Touch  > **Email**. This opens the **Inbox** screen.
2. Touch  > **Accounts** to open the accounts screen.
3. Touch  > **Add account** to create another email account.

6.2.3 Creating and Sending Emails

1. On the accounts screen, touch the email account that you want to use.
2. On the **Inbox** screen, touch  > **Compose**.
3. In the **To** field, enter the email address or touch the Android icon to select recipients from your contact list.
4. Enter the subject and compose your message.

To add an attachment, touch  > **Add attachment**.

5. When you are finished, touch **Send**.

To save the message and send it at a later time, touch **Save as draft** or  to save the message as draft.

6.2.4 Opening and Viewing Emails


1. On the accounts screen, touch the account that you want to use.
2. Access a folder, and then touch the message that you want to view.

6.2.5 Replying to Emails

1. On the accounts screen, touch the email account that you want to use.
2. Touch the email message that you want to reply to.
3. Touch **Reply** or **Reply all**.

4. Compose your message.
5. When you are finished, touch **Send**.

6.2.6 Forwarding Emails


1. On the accounts screen, touch the email account that you want to use.
2. Touch the email message that you want to forward.
3. Touch  > **Forward**.
4. In the **To** field, enter the email address.
5. Compose your message
6. When you are finished, touch **Send**.

6.2.7 Deleting Emails

1. On the accounts screen, touch the email account that you want to use.
2. On the **Inbox** screen, touch and hold the message that you want to delete.
3. Touch **Delete**.

6.2.8 Customizing Email Account Settings

You can configure the general settings of your email account, such as the account name, email checking frequency, notifications, default account, and server settings.

1. Touch  > **Email**.
2. On the accounts screen, touch and hold the email account that you want to customize.
3. Touch **Account settings**.
4. Modify the necessary settings.

7 Getting Connected

7.1 Using GPRS/3G Connection


Your phone can connect to the Internet via Wi-Fi or network data connection, such as GPRS or 3G connection. When both Wi-Fi and network data connection are available, the mobile phone prefers the Wi-Fi connection. The availability of the network data connection depends on your service provider.

7.1.1 Checking Data Network Connection

1. Touch  > **Settings**.
2. Touch **Wireless & networks** > **Mobile networks** > **Access Point Names**.


By default, your phone reads the access point of your SIM card. Do not change the preset parameters; otherwise, you may not be able to access the network.

7.1.2 Turning On the Data Network Connection

1. Touch  > **Settings**.
2. Touch **Wireless & networks** > **Mobile networks**.
3. Select the **Data enabled** check box to turn on data connection.


7.1.3 Turning On the Data Network Connection While Roaming

You can still use your phone to connect to the Internet while roaming outside the network coverage, such as when you travel to other countries. However, this service may incur extra charges. Contact your network service provider for details.


1. Touch  > **Settings**.
2. Touch **Wireless & networks** > **Mobile networks**.
3. Select the **Data roaming** check box to turn on data connection while roaming.

7.2 Using Wi-Fi

7.2.1 Turning On Wi-Fi


1. Touch  > **Settings**.
2. Touch **Wireless & networks**, and then select the **Wi-Fi** check box to turn on Wi-Fi.

7.2.2 Connecting to Wi-Fi Networks

1. Touch  > **Settings**.
2. Touch **Wireless & networks** > **Wi-Fi settings**.
3. Touch **Wi-Fi** to turn on Wi-Fi. Your phone automatically scans for available networks.
4. Touch a Wi-Fi network.

- If you select an unsecured network, touch **Connect** to establish the connection.
- If you select a secured network for the first time, enter the password, then touch **Connect**. Once the network connection has been established, password will not be required on your next connection unless you reset your phone to its default settings.

7.2.3 Adding Wi-Fi Networks

1. Touch  > **Settings**.
2. Touch **Wireless & networks** > **Wi-Fi settings**.
3. Touch **Add Wi-Fi network**.
4. Follow the screen prompts and enter the SSID, security, and other required information.
5. When you are finished, touch **Save**.

7.3 Sharing Your Phone's Data Connection


Use USB tethering to share your phone's data connection to a computer using a USB cable. Or set your phone as a Wi-Fi hotspot and wirelessly share the data connection to one or more computers.

7.3.1 Using USB Tethering

You can connect your phone to your computer with a USB cable and share your phone's Internet connection with your computer.

■ **Note:**

You cannot share your phone's data connection and microSD card via USB at the same time


1. Connect your phone to the computer using the USB cable.
2. Touch  > **Settings**.
3. Touch **Wireless & networks** > **Tethering & portable hotspot**.
4. Select the **USB tethering** check box to share your data connection.

7.3.2 Using Your Phone as a Portable Wi-Fi Hotspot

Turn your phone into a portable Wi-Fi hotspot to share your phone's data connection to one or more computers or other wireless devices.

■ **Note:**


When your phone is serving as a Wi-Fi hotspot, you cannot use applications to access the Internet via its Wi-Fi connection.

1. Touch  > **Settings**.
2. Touch **Wireless & networks** > **Tethering & portable hotspot**.
3. Select the **Portable Wi-Fi hotspot** check box to enable the function.
4. Touch **Portable Wi-Fi hotspot settings** > **Configure Wi-Fi hotspot**.
5. On the **Configure Wi-Fi hotspot** window, select the security settings and assign a network SSID and password. These settings will be used by the devices to connect to your phone.
6. When you are finished, touch **Save**.


7.4 Using Bluetooth

Bluetooth allows you to share files, talk hands-free, or transfer files to other Bluetooth devices within a 10-meter (33 feet) distance.

7.4.1 Turning On Bluetooth

1. Touch  > **Settings**.
2. Touch **Wireless & networks**, and then select the **Bluetooth** check box to turn on Bluetooth.
3. Touch **Bluetooth settings**, and then select the **Discoverable** check box to make your phone visible to other Bluetooth devices.

7.4.2 Pairing and Connecting to Bluetooth Devices


1. Ensure that Bluetooth is enabled.
2. Touch  > **Settings** > **Wireless & networks** > **Bluetooth settings**. Your phone scans for Bluetooth devices in range.
3. Touch the device that you want to pair with.
4. Enter the pairing password to connect.

7.4.3 Sending Files via Bluetooth

You can send pictures, videos, or music files to other devices via Bluetooth.

1. On the **ES File Explorer** application, touch and hold the file to be sent to open the options menu.
2. Touch **Share**, and then touch **Bluetooth** and select a paired device.

7.4.4 Disconnecting or Unpairing Bluetooth Devices

1. Touch  > **Settings** > **Wireless & networks** > **Bluetooth settings**.
2. On the **Bluetooth devices** section, touch and hold the connected device.
3. Touch **Unpair** to disconnect the device.

7.5 Using the microSD Card

7.5.1 Using the microSD Card as USB Mass Storage

To transfer all your favorite music and pictures to and from your PC or phone's microSD card, set the microSD card as USB mass storage.

1. Connect your phone to your PC using the USB cable. The PC will detect the microSD card as a removable disk.
2. If the **USB Mass Storage** screen automatically appears, skip this step. Otherwise, open the notifications panel, and touch **USB connected**.
3. Touch **Turn on USB storage**.
4. Transfer to and from your PC and microSD card using the copy and paste functions.
5. When you are finished, touch **Turn off USB storage**.

■ **Note:**

You cannot open some applications, such as Camera, when using the microSD card as a USB mass storage device.

7.5.2 Removing the microSD Card

1. Touch  > **Settings** > **Storage**.
2. Touch **Unmount SD card**.
3. Remove the microSD card.

8 Using the Internet

Your phone can connect to the Internet via Wi-Fi or a mobile network connection. When both Wi-Fi and mobile network connection are present at the same time, your phone automatically prefers the Wi-Fi connection.

8.1 Browser

Use **Browser** to access and surf the Internet.

8.1.1 Opening Browser

Do any of the following to open **Browser**:

- Touch .
- Touch  > **Browser**.

Browser Options

On the browser screen, touch  and perform the following options:

- **New window**: Touch to open a new window.
- **Refresh**: Touch to refresh the current web page.
- **Bookmarks**: Touch to display bookmarks.
- **Forward**: Touch to forward to the next web page.
- **Windows**: Touch to display the web preview screen. You can switch to another web page or open a new web page.
- **More**: Touch to access more browser functions.

8.1.2 Opening a Web Page


Opening a Web Page

To open a web page, type the web page address on the URL field. As you type, matching web page addresses appear on the screen. You can touch a web page address to open it or continue typing.

Scrolling a Web Page


To scroll a web page, swipe your finger up or down the screen.

8.1.3 Setting a Home Page

1. On the browser screen, touch  > **More** > **Settings** > **Set home page**.
2. Enter the web page address that you want to set as the home page, then touch **OK**.


8.1.4 Managing Bookmarks

Adding a Bookmark


1. On the browser screen, go to the web page that you want to set as a bookmark.
2. Touch  > **Bookmarks** > **Add**. The Add bookmark screen opens.

3. Edit the bookmark name if necessary, then touch **OK**.

Opening a Bookmark

1. On the browser screen, touch  > **Bookmarks**.
On the **Bookmarks** screen, touch the **Most Visited** tab or the **History** tab to filter and view the pages you have visited.
2. Touch the bookmark of the web page that you want to open.


8.1.5 Customizing the Browser Settings

1. On the browser screen, touch  > **More** > **Settings**.
2. Modify the necessary settings.


8.2 Quick Search

You can search information on your phone and on the web using **Google**.

8.2.1 Using Text Search

1. On the Home screen, touch the **Google** box.
2. Enter the text you want to search on the box.
3. As you type, matching items on your phone or suggestions from Google Search appear. If what you are searching for appears, you can touch to open it in the appropriate application. Otherwise, continue typing then touch .

8.2.2 Using Voice Search

1. On the Home screen, touch the **Google** box.
2. Touch  to use voice search.
3. When the Speak now screen opens, speak the words that you want to search.
4. When you are finished speaking, **Voice Search** analyses your speech and displays results of your search. Touch a result to complete search.

If **Voice Search** misunderstands what you are saying or no match is found, touch **Speak again** to try again.

8.3 Google Account

Google applications, such as Talk, Gmail, and Play Shop, come preinstalled on your phone. To use these applications, you must sign in with your Google account.

When you turn on your phone for the first time and open a Google service, you will be prompted to enter your username and password.

■ Note:

The availability of these applications, services, and features vary according to your country or network provider.

8.3.1 Creating a Google Account

If you do not have a Google account, you can use your phone to create one.

1. After reading the setup information, touch **Next**.
2. Touch **Create**.
3. Enter your first name, last name, and preferred username for your account, and then touch **Next**.
4. Follow the wizard to complete the setup.


8.4 Gmail

Gmail is Google's web-based email service. When you first set up your phone, you may configure or create a Google account. The first time you open **Gmail** on your phone, your **Inbox** contains messages from your account.

8.4.1 Opening Gmail

Touch  > **Gmail**. The **Inbox** screen appears.



8.4.2 Creating and Sending Emails

1. On the **Inbox** screen, touch  > **Compose**.
2. In the **To** field, enter the recipient's email address. To send to many recipients, separate the email addresses with commas.


★ Tip:

To send to many recipients, separate the email addresses with commas. You can add as many recipients as you want.

To add Cc/Bcc, touch  > **Add Cc/Bcc**.

3. Enter the email subject and your message.
4. When you are finished, touch  > **Send** or .




Adding Attachments

On the compose screen, touch  > **Attach**, then select the picture you want to attach.




Saving as Drafts

If you want to save your message and send it a later time, touch  > **Save draft** or .



8.4.3 Replying to Emails

1. On the **Inbox** screen, touch the email that you want to reply to.
2. Touch , and then touch **Reply** or **Reply all**.
3. Compose your message.
4. When you are finished, touch  > **Send** or .

8.4.4 Forwarding Emails

1. On the **Inbox** screen, touch the email that you want to forward.
2. Touch , and then touch **Forward**.
3. In the **To** field, enter the email address.
4. Compose your message.
5. When you are finished, touch  > **Send** or .

8.4.5 Searching for Emails

1. On the **Inbox** screen, touch  > **Search**.
2. Enter the keyword to search, then touch .

8.4.6 Customizing Gmail Settings

On the **Inbox** screen, touch  > **More** > **Settings**.


8.5 Talk

Talk is Google's messaging program that allows you to chat with your friends on your phone.


8.5.1 Opening Talk

Touch  > **Talk**.


8.5.2 Adding a Friend

1. On the Talk screen, touch  > **Add friend**.
2. Enter the **Talk** instant messaging ID or the Google email address of the friend you want to invite.
3. Touch **Send invitation**.



8.5.3 Starting a Chat

1. On the friends list screen, touch a friend to open a chat window.
2. Type your message, then touch **Send**.
3. To close the chat, touch  > **End chat**.

8.5.4 Accepting Friends' Invitation

1. Touch  > **More** > **Invites**.
2. Touch a pending invitation, then touch **Accept**.

8.5.5 Viewing Friends

- To view all your friends, touch  > **All friends**.
- To view only the friends you frequently chat with, touch  > **Most popular**.
- To block friends, touch and hold a friend, then touch **Block friend**.

8.5.6 Setting Online Status

1. On the friends list screen, touch your name to open the set status screen.
2. Touch the status icon, then touch desired status.
3. If desired, enter a status message that you want to be shown to your friends.
4. Touch **Done**.

8.5.7 Customizing Talk Settings

On the friends list screen, touch  > **Settings**.

8.5.8 Signing Out of Talk


On the friends list screen, touch  > **Sign out**.

8.6 Maps

Maps allows you to keep track of your location, view traffic information, find places, and get directions to your destination.

8.6.1 Enabling Location Settings

Before you start using **Maps**, you must set your location. Your phone can determine your location using GPS satellites or by identifying your mobile network.

1. Touch  > **Settings** > **Location & security**.
2. In **My Location** section, select the **Use wireless networks** check box or the **Use GPS satellites** check box or both.


8.6.2 Opening Maps

To open **Maps**, touch  > **Maps**.



The blinking arrow indicates your current location on the map.

8.6.3 Finding Places

1. On the **Maps** screen, enter the place that you want to search on the **Search Maps** box.

2. As you type, suggested places are displayed. You can touch a suggested place or continue typing, then touch .
3. A callout appears on the map to indicate the location. To view the location details, touch the callout.

8.6.4 Getting Directions

1. On the **Maps** screen, touch  > **Directions**.
2. Enter the starting point on the first text box, and enter the destination on the second text box.
3. Touch the mode of transport icon: by car, by public transport, or by foot.
4. Touch **Get directions**. The directions to your destination are listed.
5. When you have reached your destination, touch  > **Clear Map** to reset the map.

8.6.5 Setting Map Mode and Layers

Touch the layers icon and touch one of the following to change map mode and layers:

- **Traffic**: View real traffic conditions. Roads are marked in color-coded lines to indicate traffic conditions.
- **Satellite**: View map on aerial photo.
- **Terrain**: View map with 3D imagery.
- **Transit Lines**: View map with transit route.
- **Latitude**: Use **Latitude** and view your friends' location.
- **My Maps**: View customized map.
- **Wikipedia**: View map with Wikipedia information.

8.7 Latitude


Latitude allows you to view your friends' location and share your location with them on **Maps**.

8.7.1 Opening Latitude

To open **Latitude**, touch  > **Latitude**.

8.7.2 Adding Friends

You can invite friends to share their location or view theirs. Friends added on Talk are listed on the friends list screen. However, they need to accept the request for sharing for you to view their location using Latitude.

1. On the **Latitude** screen, touch  > **Add friends**.
2. If your friend's name appears on the list, touch the add icon to send the sharing request. Or, touch **Select from Contacts** or **Add via email address** to invite friends to Latitude.

8.7.3 Refreshing Friend List

On the **Latitude** screen, touch  > **Refresh friends** to refresh your friends list.

8.7.4 Viewing Friends' Location

1. On the **Latitude** screen, touch a friend on the list.
2. To view your friend's location, touch one of the following icons:
 - **Map**: To view your friend's location on the map.
 - **Directions**: To view the directions to your friend's location.
 - **Street view**: To view your friend's location using street view mode.

8.7.5 Selecting Sharing Options

You can set what type of information is shared to specific friends. You can share your complete location or opt for city level location or even hide from them.

1. On the **Latitude** screen, touch a friend.
2. Touch **Sharing options**, then touch an option.

8.7.6 Removing Friends

1. On the **Latitude** screen, touch a friend on the list.
2. Touch **Remove this friend**.
3. Touch **OK** to confirm.

8.7.7 Setting Privacy Options

On the **Latitude** screen, touch  > **Settings**.

8.8 Play Shop


Play Shop allows you to buy and download games and other applications to your phone.

8.8.1 Opening Play Store

To open **Play Shop**, touch  > **Play Shop**.

When you open **Play Shop** for the first time, the **Google Play Terms of Service** is displayed. Touch **Accept** to continue.

8.8.2 Searching For Applications

1. Touch  > **Search**.
2. Type the application that you want to search, then touch the Search icon.

You can also search by touching the available categories or featured applications.

8.8.3 Downloading Applications

1. Touch the application that you want to download.
2. Touch **Download** (if the item is free) or the price button if you need to purchase the application. You may be asked to enter your credit card details to purchase.
3. Touch **OK** to accept the permission.

4. The downloading status is shown on the notifications bar. When finished, the application icon appears on the main application menu.

8.8.4 Removing Applications

1. Touch **My Apps** to view the applications you have downloaded.
2. Touch and hold the application you want to remove.
3. Touch **Uninstall**.

8.9 Navigation


Navigation is an Internet-based GPS satellite which allows you to search for destinations by saying it.

To open Navigation, touch  > **Navigation**.

8.10 Places

Places allows you to find places near your current location.


8.10.1 Opening Places

1. Touch  > **Places**.
2. Touch a category to view the list of places near your location.
3. Touch a place to view more information or use the search box to search for other places.


8.11 YouTube

YouTube allows you to watch, download, and upload videos to YouTube.


8.11.1 Opening YouTube

Touch  > **YouTube**. When opening **YouTube** for the first time, the **Terms of Service** appears. Touch **Accept** to continue.

8.11.2 Browsing for Videos

1. On the **YouTube** home screen, touch  > **Browse**.
2. Touch a category.
3. The videos are grouped according to **Most viewed**, **Top rated**, **Most discussed**, **Top favorited**. Touch a video to play it.

8.11.3 Searching for Videos

1. Touch  > **Search**.
2. Enter the keyword to search, then touch the Search icon.
3. Search results are displayed. Touch a video to watch it.

8.11.4 Sharing Videos


1. Touch the video that you want to share.
2. Touch **More** on the upper-right corner of the screen.
3. Touch **Share**.
4. Touch an application for sharing.

8.11.5 Uploading Videos

To upload videos, you must sign in using your Google or YouTube account.

Uploading From Gallery

You can upload videos saved in the microSD card.

1. Touch  > **Upload**.
2. Browse for the video file that you want to upload, then touch the file to open the Upload video screen.
3. Enter the video title. If desired, touch **More details** to add description, set the privacy, and add tags to your video.
4. When you are finished, touch **Upload**.

Capture and Upload Videos

1. On the **YouTube** home screen, touch the video icon on the upper right corner of the screen.
2. Touch the record icon to record. When you are finished, touch the stop icon.
3. Enter the video title. If desired, touch **More details** to add description, set the privacy, and add tags to your video.
4. When you are finished, touch **Upload**.

8.11.6 Customizing YouTube Settings

On the **YouTube** home screen, touch  > **Settings**.


8.12 News & Weather

News & Weather allows you to view the weather in your location and read the latest stories, sports, and entertainment news headlines on your phone.


8.12.1 Opening News & Weather

Touch  > **News & Weather**.

Do any of the following:

- Swipe your finger to the right or left to browse the categories.
- Touch a headline to open **Browser** and view the complete story.
- To refresh **News & Weather**, touch  > **Refresh**.

8.12.2 Customizing News & Weather Settings



On the **News & Weather** screen, touch  > **Settings**.

8.13 ES File Explorer

ES File Explorer is a featured File Manager which can explore the phones & PCs in LAN & Remote & Bluetooth.


Please insert microSD card correctly before using the application. (You can see "2.2.2 Installing the microSD Card" on page 5 for more details.)

8.13.1 Changing viewing

1. Touch  > **ES File Explorer**.
2. On the **ES File Explorer** screen, touch  **Local** at the top left corner to open the **Change View** menu.
3. According to your needed, touch **Local**, **LAN**, **FTP** or **Bluetooth** to access the desired device to view files.

8.13.2 Operations

With ES File Explorer, you can browse, transmit, copy, cut, delete, rename files and folders among the Local, LAN, FTP and Bluetooth device.

1. On the **ES File Explorer** screen, touch  **Local** to select **Local**, **LAN**, **FTP** or **Bluetooth**.
2. In the current screen, touch and hold a file or a folder to open the **Operations** menu.
3. Select Cut, Copy, Delete, Rename or other options according to your needed.

8.13.3 Menu Options




In ES File Explorer, touch  and perform the following options:

- **Operations**: Touch to open the **Operations** menu.
- **New**: Touch to create a new file or folder, or start a new search.
- **Manager**: Touch to open the Manager menu.
- **Show Tabs**: Touch to show tabs of Local, Lan and FTP at the top of the current screen. Touch again to hide tabs.
- **Settings**: Touch to access the settings of the ES File Explorer.
- **More**: Touch to open other more options.

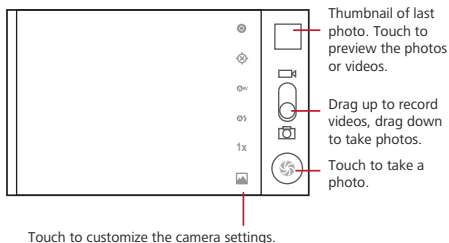
9 Entertainment

9.1 Taking Photos and Recording Videos



9.1.1 Opening the Camera/Camcorder

- Touch  > **Camera** to open the camera. The camera opens in landscape mode, ready to take a picture.
- Touch  > **Camcorder** to open the camcorder. The camcorder opens in landscape mode, ready to record a video.
- Touch  to close the camera or camcorder.


Capture Screen





9.1.2 Taking Photos

1. Open the camera. Make sure you are in camera mode.
2. If necessary, change the camera settings. The preview changes as you change the settings.
3. Touch and hold  to set the focus.
4. Release  to take the photo.


9.1.3 Viewing Your Photos

1. After taking the photo, the thumbnail is shown on the upper right corner of the capture screen. Touch the thumbnail to view it.
2. Touch the on-screen buttons to do any of the following:
 - **Share:** To send your photo in a message or post it online.
 - **Delete:** To delete your photo.
 - **More:** To access other options, such as photo details, crop, set as wallpaper or contact icon, rotate, and slideshow settings.
3. Touch  to return to the capture screen.

9.1.4 Recording Videos

1. Open the camcorder. If you are in camera mode, drag the button to switch to camcorder mode.
2. If necessary, change the camcorder settings.
3. Touch  to start recording video.
4. Touch  to stop recording.


9.1.5 Viewing Your Videos

1. After recording a video, the thumbnail is shown on the upper right corner of the capture screen. Touch the thumbnail to view it.
2. Touch the on-screen buttons to do any of the following:
 - **Share:** To send your video in a message or post it online.
 - **Delete:** To delete your video.
 - **More:** To view the video details and access slideshow settings.
3. Touch  to return to the capture screen.

9.2 Using My Gallery

My Gallery automatically searches for photos and videos on your phone memory and microSD card. Use **My Gallery** to view and edit pictures, watch videos, and set photos as wallpapers or as contact pictures.

9.2.1 Opening My Gallery


Touch  > **My Gallery**.

The **My Gallery** application groups your pictures and videos by storage location and stores these files in folders. Touch a folder to the pictures or videos inside.


9.2.2 Viewing Pictures

1. In the **My Gallery**, touch the folder that contains the pictures you want to view.
2. Touch the picture to view it in full-screen mode.
3. Flick your finger left or right to view the next or the previous photo.
4. To zoom in or zoom out the picture, double-touch the screen or touch the zoom icons.

9.2.3 Rotating Pictures


1. When viewing a picture, touch  > **More**.
2. Touch **Rotate left** or **Rotate right**.

9.2.4 Cropping Pictures

1. When viewing a picture, touch  > **More**.
2. Touch **Crop**.
3. Use the cropping tool to select the portion of the picture to crop:
 - Drag inside the cropping tool to move it.
 - Drag and hold an edge of the cropping to resize the image.
 - Drag and hold a corner of the cropping tool to resize the image while keeping the ration.
4. Touch **Save**.

9.2.5 Using Pictures


You can use pictures as a wallpaper or a contact icon.

1. When viewing a picture, touch  > **More**.
2. Touch **Set as**, you can set the picture as contact icon or wallpaper.

9.3 Enjoying Music

You can listen to music files saved on the phone's microSD card.

9.3.1 Opening the Media Library

Touch  > **Music** to display the media library.

The Music application organizes your music files by storage location. It contains four tabs:

Artists, **Albums**, **Songs**, and **Playlists**.

9.3.2 Playing Music

1. Touch a category on the music library screen.
2. Touch the song that you want to play.

9.3.3 Adding Music to Playlists

1. Touch a category on the music library screen.
2. Touch and hold the song that you want to add to the playlist.
3. Touch **Add to playlist**.
4. Touch **Current playlist** to add the song to an existing playlist or touch **New** to create a new playlist and add the song to it.

9.3.4 Playing Playlists

1. Touch the **Playlist** tab on the music library screen.
2. Touch and hold the playlist that you want to play.
3. Touch **Play**.

10 Synchronizing Information

Some applications on your mobile phone give you access to the same personal information that you can add, view, and edit on your computer. If you add, change, or delete your information in any of these applications on the web, the updated information also appears on your mobile phone.

This is made possible through over-the-air data synchronization. The process occurs in the background and does not interfere with use of your mobile phone. When your phone is synchronizing, a data synchronization icon will be shown in the notifications bar.


10.1 Managing Your Accounts

You can synchronize contacts, email, and other information on your mobile phone with multiple Google accounts or other kinds of accounts, depending on the applications installed on your mobile phone.

For example, you can start by adding your personal Google account, so your personal email, contacts, and calendar are always available. You could then add a work account, so your work-related emails and work contacts are handy. If you like, you may add multiple Google accounts or other accounts.

10.1.1 Adding an Account

When you add an account, Contacts compares contacts from the newly synchronized account with contacts from your existing mobile phone accounts and attempts to merge duplicates into a single entry in Contacts. While it is presented as a single contact entry, the contact data itself is not merged.

1. Touch  > **Settings** > **Accounts & sync**. The screen displays your current synchronization settings and a list of your current accounts.
 - **Note:** In some cases, you may need to obtain account details from an IT support. For example, you may need to know the account's domain or server address.
2. Touch **Add account**.
3. Touch the kind of account to add.
4. Follow the on-screen steps to enter the required and optional information about the account. Most accounts require a username and password, but the details depend on the kind of account and the configuration of the service to which you are connecting.
5. Configure the account. Depending on the kind of account, you may be asked to configure what kind of data you want to sync to the mobile phone, to name the account, and for other details. When you are finished, the account is added to the list in the **Accounts & sync settings** screen.

10.1.2 Removing an Account

You can remove an account, deleting it and all information associated with it from your mobile phone, including email, contacts, settings, and so on. You cannot, however, remove some accounts, such as the first account you signed into on the mobile phone. If you attempt to remove certain accounts, all personal information associated with it will be deleted.

1. On the **Accounts & sync settings** screen, touch the account to delete.

2. Touch **Remove account**.
3. Confirm that you want to remove the account.

10.2 Customizing Your Account Synchronization

You can configure background data use and synchronization options for all the applications on your phone. You can also configure what kind of data you synchronize for each account.

For some accounts, synchronizing is two-directional; changes that you make to the information on your mobile phone are made to the copy of that information on the web. Some accounts support only one-way synchronize; the information on your mobile phone is read-only.

10.2.1 Configuring General Sync Settings

On the **Accounts & sync settings** screen, do the following:

- Select or clear the **Background data** check box to control whether applications and services can transmit data when you are not working with them directly (that is, when they are running in the background).

If you clear this option, **Gmail****Google Mail** stops receiving new mail, **Calendar** stops synchronizing events, and so on, until you touch the **Refresh** menu item or send an email.

- Select or clear the **Auto-sync** check box to control whether changes you make to information on the phone or on the web are automatically synchronized with each other.

For example, when this option is selected, changes that you make in **Contacts** on the phone are automatically made in Google Contacts on the web.

10.2.2 Changing an Account's Synchronization Settings


1. On the **Accounts & sync settings** screen, touch the account whose synchronization settings you want to change. The data and synchronization screen opens, displaying a list of the kinds of information the account can synchronize.
2. Selected items are configured to synchronize to your mobile phone.
3. Select or clear the check box of information you want to synchronize to the mobile phone.

11 Using Other Applications

11.1 Using the Calculator

Use the **Calculator** to solve simple arithmetic problems or use its advanced operators to solve more complex equations.

11.1.1 Opening the Calculator

Touch  > **Calculator** to open the application.

11.1.2 Switching to the Advanced Panel

On the **Calculator** screen, flick the screen to the right or left to switch between Advanced panel and Basic panel.

11.2 Using the Calendar

Use **Calendar** to create and manage events, meetings, and appointments. Depending on your synchronization settings, the calendar on your phone can be synchronized with the internet-based calendar you use.


11.2.1 Opening the Calendar

Touch  > **Calendar** to open the application.

★ Tip:

To access Google calendar, touch , and then touch **More > Calendars**.

11.2.2 Creating an Event

1. On any calendar view, touch . Then touch **More > New event** to open the **Event details** screen.
2. Enter the event name.
 - If there is a time frame for the event, touch **From** and **To** to set the beginning and end times of the event.
 - If the event is a special occasion such as a birthday or a day-long activity, set the date for **From** and **To**, and then select the **All day** check box.
3. Enter the location of the event and a description.
4. If you have more than one calendar, select the calendar where you want to save the event.
5. Enter email addresses to invite guests to the event.
6. Set in **Repetition** whether the event recurs and its frequency, and then set the time of your event reminder in **Reminders**.
7. Touch **Done**.

★ Tip:

To quickly create an event in the **Day**, **Week**, or **Month** view, touch and hold an empty time slot, and then touch **New event**. A new event details screen will appear with the selected time slot and date in the **From** and **To** fields.

11.2.3 Setting an Event Reminder

1. On any calendar view, touch an event to view its details or an event summary.
2. Touch the **Add reminder** button to add a reminder. Or touch the reminder's "-" button to delete an existing reminder.
3. Touch the reminder time, and then touch the length of time before the event when you want to be reminded. When the time comes, you will receive a notification about the event.

11.2.4 Customizing the Calendar Settings


On any calendar view, touch . Then touch **More > Settings**.

- **Hide declined events:** Select to hide events for which you have declined invitations.
- **Use home time zone:** Select to display the calendar and event times in the home time zone when you are travelling. If this setting is enabled, touch **Home time zone** to select your home time zone.
- **Set alerts & notifications:** Touch to set event reminders to alert you, send you a notification, or to turn off event notifications on your mobile phone.
- **Select ringtone:** Touch to select the ringtone to sound when you receive an event reminder.
- **Vibrate:** Select to vibrate the mobile phone when you receive an event notification.
- **Default reminder time:** Touch to select the default time before an event for event reminders to occur.

11.3 Using the Clock

In addition to displaying the date and time, the **Clock** application displays information about the weather and your phone. You can also use **Clock** to turn your mobile phone into an alarm clock or a digital photo frame.

11.3.1 Opening the Clock

Touch  > **Clock** to open the application.

Clock opens with the date and time displayed on your Home screen wallpaper, along with your local weather and other useful information.

11.3.2 Opening the Alarms

On the **Clock** screen, touch  to open the **Alarms**.

Adding an Alarm

1. On the alarm list screen, touch **Add alarm**.
2. Set the alarm time, and then touch **Set**.

3. Touch **Repeat** to set the days when you want the alarm to sound.
4. Touch **Ringtone** to select a ringtone for the alarm.
5. Select the **Vibrate** check box to have the phone vibrate, in addition to playing the ringtone.
6. Touch **Label** to enter a name for the alarm.
7. Touch **Done**.

Editing an Alarm



1. On the alarm list screen, touch one of the alarms on the screen.
2. Touch **Time** to set the time of the alarm.
3. Touch **Repeat** to set the days when you want the alarm to sound.
4. Touch **Ringtone** to select a ringtone for the alarm.
5. Select the **Vibrate** check box to have the phone vibrate, in addition to playing the ringtone.
6. Touch **Label** to enter a name for the alarm.
7. Touch **Done**.

Customizing Alarm Settings

On the alarm list screen, touch , and then touch **Settings**.

11.4 Using the FM Radio

Plug the earphones to the device audio port to use the **FM Radio**.

1. Touch  > **FM Radio** to open the application.
2. Touch the radio power button on the upper-right corner of the screen.
3. Drag the frequency slider to tune in to your desired radio channel or touch the finger icon to enter a frequency.
4. Touch the corresponding icon to set a radio channel as favorite, record radio, save or share the radio recording.
5. Touch the radio power button to close the radio.
6. Touch  to close the application.

12 Managing Your Mobile Phone





To configure your mobile phone, touch  > **Settings**.

12.1 Setting the Date and Time

By default, your mobile phone automatically uses the date, time zone, and time provided by the network.

■ **Note:**

When your mobile phone is using date and time settings provided automatically by the network, you cannot manually set the date, time, and time zone.

1. On the **Settings** screen, touch **Date & time**.
2. Clear the **Automatic** check box.
3. Touch **Set date**. On the set date screen, touch  or  to adjust the date, month, and year, and then touch **Set** when the configuration is complete.
4. Touch **Select time zone**, and then select the desired time zone from the list. Scroll the list to view more time zones.
5. Touch **Set time**. On the set time screen, touch  or  to adjust the hour and minute. Touch **Set** when the configuration is complete.
6. Select or clear the **Use 24-hour format** check box to switch between 24-hour format and 12-hour format.
7. Touch **Select date format** to select how you want the date to display on your mobile phone.

12.2 Setting the Display

12.2.1 Adjusting the Screen Brightness

1. On the **Settings** screen, touch **Display > Brightness**.
2. Drag the slider left to make the screen darker, or right to make it brighter.
3. Touch **OK** to save the adjustment.

12.2.2 Adjusting the Time Before the Screen Turns Off

If your mobile phone is idle for several minutes, it will turn off the screen to save battery power. To set a longer or shorter idle time, do the following:

1. On the **Settings** screen, touch **Display > Screen timeout**.
2. Select the duration you want the screen to be illuminated.

12.3 Setting Ringers

12.3.1 Turning On Silent Mode

1. On the **Settings** screen, touch **Sound**.
2. Select the **Silent mode** check box to silence all sounds except alarms, and music and video media sound.

12.3.2 Adjusting the Volume

You can adjust the volume from the Home screen or any application screen (except during a call or when playing music or videos). Press the Volume keys to adjust the volume to the level you desire.

You can also adjust the ringtone, media, or alarm volume from the settings screen.

1. On the **Settings** screen, touch **Sound > Volume**.
2. Drag the corresponding slider left to make the volume lower, or right to make it higher.
3. Touch **OK** to save the adjustment.



12.3.3 Changing the Phone Ringtone

1. On the **Settings** screen, touch **Sound > Phone ringtone**.
2. Touch the ringtone you want to use, and then touch **OK**. The ringtone plays when selected.

12.3.4 Changing the Notification Ringtone

1. On the **Settings** screen, touch **Sound > Notification ringtone**.
2. Touch the ringtone you want to use, and then touch **OK**. The ringtone plays when selected.

12.3.5 Changing the Message Ringtone

1. On the Home screen, touch  > **Messaging**.
2. In the message list, touch  > **Settings > Select ringtone**.
3. Touch the ringtone you want to use, and then touch **OK**. The ringtone plays when selected.

12.3.6 Enabling Other Sounds

1. On the **Settings** screen, touch **Sound**.
2. In the **Feedback** section, check the box to enable the sound for the following options:
 - **Audible touch tones**: Play tones when using the dial pad.
 - **Audible selection**: Play sound when making screen selections.
 - **Screen lock sounds**: Play sound when locking and unlocking the screen.
 - **Haptic feedback**: The device vibrates when pressing soft keys or when touching application interface keys.

12.4 Setting Phone Services

12.4.1 Customizing Call Settings

Your mobile phone service provider offers different services such as call forwarding, call waiting, fixed dialing numbers, and voicemail. You can customize many of these services if they are part of your calling plan.

On the **Settings** screen, touch **Call settings** to customize your call functions.

12.4.2 Turning On Data Roaming

1. On the **Settings** screen, touch **Wireless & networks > Mobile networks**.
2. Select the **Data roaming** check box.

■ Note:

Accessing data services while roaming may incur additional charges. Ask your network service provider about data roaming fees.

12.4.3 Switching Off Data Service

1. On the **Settings** screen, touch **Wireless & networks > Mobile networks**.
2. Clear the **Data enabled** check box.

12.4.4 Setting Up VPN

1. On the **Settings** screen, touch **Wireless & networks > VPN settings**.
2. Touch **Add VPN**.
3. Touch a VPN protocol, and then enter the necessary information.

12.5 Setting Voice Input and Output

12.5.1 Selecting Voice Input Language

1. On the **Settings** screen, touch **Voice input & output > Voice recognizer settings > Language**.
2. Touch the desired language.

12.5.2 Filtering Voice Input

1. On the **Settings** screen, touch **Voice input & output > Voice recognizer settings > SafeSearch**.
2. Touch a voice search filter option.
3. Check the **Block offensive words** box to hide offensive voice search results.

12.5.3 Installing Voice Data

Use the **Text-to-Speech** settings to configure the Android text-to-speech synthesizer, for applications that can take advantage of this feature. You must download and install voice data from **Play Shop** if voice data is not yet installed.

1. On the **Settings** screen, touch **Voice input & output > Text-to-speech settings > Install voice data**.
2. If your mobile phone does not have speech synthesizer data installed, connect to Android **Play Shop** and let it guide you through the process of downloading and installing the data.
3. Follow the instructions to install the voice data.

12.5.4 Adjusting the Speech Rate

1. On the **Settings** screen, touch **Voice input & output** > **Text-to-speech settings** > **Speech rate**.
2. Select a speed at which the text is to be spoken.

12.5.5 Selecting Speech Language

1. On the **Settings** screen, touch **Voice input & output** > **Text-to-speech settings** > **Language**.
2. Touch the desired speech language.

12.6 Protecting Your Mobile Phone

12.6.1 Turning on Your SIM Card PIN

1. On the **Settings** screen, touch **Location & security** > **Set up SIM card lock**.
2. Select the **Lock SIM card** check box.
3. Use the keyboard to enter the SIM card PIN, and then touch **OK**.
4. To change the SIM card PIN at any time, touch **Change SIM PIN**.

■ Note:

You can dial emergency numbers any time from your mobile phone.

12.6.2 Protecting Your Mobile Phone with a Screen Lock

To keep your data more secure, lock the screen and/or require a screen unlock pattern every time your mobile phone is turned on or wakes up from sleep mode.

1. On the **Settings** screen, touch **Location & security** > **Set up screen lock** > **Pattern**.
2. A tutorial appears on the screen, touch **Next** to continue.
3. Flick your finger vertically, horizontally or diagonally, and connect at least four dots in any order you choose. Lift your finger from the screen when you are finished. You must flick your finger on the screen to create the pattern, not simply touch individual dots.
4. Your mobile phone will record the pattern. Touch **Continue**.
5. When prompted, draw the screen unlock pattern again, and then touch **Confirm**.

To change your unlock screen pattern, touch **Location & security** > **Change screen lock**.


12.6.3 Hiding Passwords

You can set your mobile phone to show or hide passwords as you type them on the screen.

1. On the **Settings** screen, touch **Location & security**.
2. Select the **Visible passwords** check box to show the password as you type. Clear the check box to hide the password.

12.7 Managing Applications

12.7.1 Viewing an Installed Application

1. On the **Settings** screen, touch **Applications > Manage applications**. The applications can be viewed by categories.
2. Touch a category: **Download**, **All**, **On SD card**, or **Running**.
3. In the applications list, do any of the following:
 - To sort the applications list by size, touch  > **Sort by size**.
 - To view application details, touch an application.

12.7.2 Removing an Installed Application

1. On the **Settings** screen, touch **Applications > Manage applications**.
2. Touch an application, and then touch **Uninstall** to remove the application from your mobile phone.

12.7.3 Ways to Free Up Your Mobile Phone Memory

- Move files and email attachments to the microSD card.
- In **Browser**, clear all temporary Internet files and Browser history information.
- Uninstall any downloaded programs that you no longer use.
- Reset your mobile phone.

12.8 Resetting Your Mobile Phone

12.8.1 Backing Up My Data

You can use your Google account to back up your mobile phone's settings to Google servers. If you replace your mobile phone, the settings you have backed up will be transferred to the new mobile phone the first time you sign in to your Google account.

1. On the **Settings** screen, touch **Privacy**.
2. Select the **Back up my data** check box.
3. Select the **Automatic restore** check box to restore the backed up settings and data when reinstalling an application.

12.8.2 Restoring Factory Data

If you reset your phone to the settings that were configured at the factory, all of your personal data stored on the phone, including information about your Google Account, any other accounts, your system and application settings, and any applications you have downloaded will be erased. Resetting the phone does not erase any system software updates you have downloaded or any files on your microSD card, such as music clips or photos.

1. On the **Settings** screen, touch **Privacy > Factory data reset**.
2. When prompted, touch **Reset phone**, and then touch **Erase everything**. The mobile phone resets the settings to the original factory settings, and then restarts.

13 Appendix

13.1 Warnings and Precautions

This section contains important information pertaining to the operating instructions of your device. It also contains information about how to use the device safely. Read this information carefully before using your device.

Electronic Device

Power off your device if using the device is prohibited. Do not use the device when using the device causes danger or interference with electronic devices.

Medical Device

- Follow rules and regulations set forth by hospitals and health care facilities. Do not use your device when using the device is prohibited.
- Pacemaker manufacturers recommend that a minimum distance of 15 cm be maintained between a device and a pacemaker to prevent potential interference with the pacemaker. If you are using a pacemaker, use the device on the opposite side of the pacemaker and do not carry the device in your front pocket.

Potentially Explosive Atmosphere

Power off your device in any area with a potentially explosive atmosphere, and comply with all signs and instructions. Areas that may have potentially explosive atmospheres include the areas where you would normally be advised to turn off your vehicle engine. Triggering of sparks in such areas could cause an explosion or a fire, resulting in bodily injuries or even deaths. Do not power on your device at refueling points such as service stations. Comply with restrictions on the use of radio equipment in fuel depots, storage, and distribution areas, and chemical plants. In addition, adhere to restrictions in areas where blasting operations are in progress. Before using the device, watch out for areas that have potentially explosive atmospheres that are often, but not always, clearly marked. Such locations include areas below the deck on boats, chemical transfer or storage facilities, and areas where the air contains chemicals or particles such as grain, dust, or metal powders. Ask the manufacturers of vehicles using liquefied petroleum gas (such as propane or butane) whether this device can be safely used in their vicinity.

Traffic Security

Observe local laws and regulations while using the device. In addition, if using the device while driving a vehicle, comply with the following guidelines:

- Concentrate on driving. Your first responsibility is to drive safely.
- Do not talk on the device while driving. Use hands-free accessories.
- When you have to make or answer a call, park the vehicle at the road side before using your device.
- RF signals may affect electronic systems of motor vehicles. For more information, consult the vehicle manufacturer.
- In a motor vehicle, do not place the device over the air bag or in the air bag deployment area. Otherwise, the device may hurt you owing to the strong force when the air bag inflates.

- Do not use your device while flying in an aircraft. Power off your device before boarding an aircraft. Using wireless devices in an aircraft may cause danger to the operation of the aircraft and disrupt the wireless telephone network. It may also be considered illegal.

Operating Environment

- Do not use or charge the device in dusty, damp, and dirty places or places with magnetic fields. Otherwise, it may result in a malfunction of the circuit.
- The device complies with the RF specifications when the device is used near your ear or at a distance of 1.5 cm from your body. Ensure that the device accessories such as a device case and a device holster are not composed of metal components. Keep your device 1.5 cm away from your body to meet this requirement.
- On a stormy day with thunder, do not use your device when it is being charged, to prevent any danger caused by lightning.
- When you are on a call, do not touch the antenna. Touching the antenna affects the call quality and results in increase in power consumption. As a result, the talk time and the standby time are reduced.
- While using the device, observe the local laws and regulations, and respect others' privacy and legal rights.
- Keep the ambient temperature between 0°C and 40°C while the device is being charged. Keep the ambient temperature between 0°C to 40°C for using the device powered by a battery.

Prevention of Hearing Damage

Using a headset at high volume can damage your hearing. To reduce the risk of damage to hearing, lower the headset volume to a safe and comfortable level.

Safety of Children

Comply with all precautions with regard to children's safety. Letting the child play with your device or its accessories, which may include parts that can be detached from the device, may be dangerous, as it may present a choking hazard. Ensure that small children are kept away from the device and accessories.

Accessories

Choose only batteries, chargers, and accessories approved for use with this model by the device manufacturer. The use of any other type of battery, charger, or accessory may invalidate any warranty for the device, may be in violation of local rules or laws, and may be dangerous. Please contact your dealer for information about the availability of approved batteries, chargers, and accessories in your area.

Battery and Charger

- Unplug the charger from the electrical plug and the device when not in use.
- Rechargeable batteries have a limited number of charge cycles and may eventually need to be replaced. The battery isn't user replaceable; it can be replaced only by an authorized service provider.
- Use the AC power supply defined in the specifications of the charger. An improper power voltage may cause a fire or a malfunction of the charger.

- If the power cable is damaged (for example, the cord is exposed or broken), or the plug loosens, stop using the cable at once. Otherwise, it may lead to an electric shock, a short circuit of the charger, or a fire.
- The device should only be connected to products that bear the USB-IF logo or have completed the USB-IF compliance program.

Cleaning and Maintenance

- The device, battery, and charger are not water-resistant. Keep them dry. Protect the device, battery, and charger from water or vapor. Do not touch the device or the charger with a wet hand. Otherwise, it may lead to a short circuit, a malfunction of the device, and an electric shock to the user.
- Do not place your device, battery, and charger in places where they can get damaged because of collision. Otherwise, it may lead to battery leakage, device malfunction, overheating, fire, or explosion.
- Do not place magnetic storage media such as magnetic cards and floppy disks near the device. Radiation from the device may erase the information stored on them.
- Do not leave your device, battery, and charger in a place with an extreme high or low temperature. Otherwise, they may not function properly and may lead to a fire or an explosion. When the temperature is lower than 0°C, performance of the battery is affected.
- Do not place sharp metal objects such as pins near the earpiece. The earpiece may attract these objects and hurt you when you are using the device.
- Before you clean or maintain the device, power off the device and disconnect it from the charger.
- Do not use any chemical detergent, powder, or other chemical agents (such as alcohol and benzene) to clean the device and the charger. Otherwise, parts of the device may be damaged or a fire can be caused. You can clean the device and the charger with a piece of damp and soft antistatic cloth.
- Do not dismantle the device or accessories. Otherwise, the warranty on the device and accessories is invalid and the manufacturer is not liable to pay for the damage.
- If the device screen is broken by colliding with hard objects, do not touch or try to remove the broken part. In this case, stop using the device immediately, and then contact an authorized service center in time.

Emergency Call

You can use your device for emergency calls in the service area. The connection, however, cannot be guaranteed in all conditions. You should not rely solely on the device for essential communications.

Certification Information (SAR)

This device meets guidelines for exposure to radio waves.

Your device is a low-power radio transmitter and receiver. As recommended by international guidelines, the device is designed not to exceed the limits for exposure to radio waves. These guidelines were developed by the independent scientific organization International Commission on Non-Ionizing Radiation Protection (ICNIRP) and include safety measures designed to ensure safety for all users, regardless of age and health.

The Specific Absorption Rate (SAR) is the unit of measurement for the amount of radio frequency energy absorbed by the body when using a device. The SAR value is determined at the highest certified power level in laboratory conditions, but the actual SAR level of the device when being operated can be well below the value. This is because the device is designed to use the minimum power required to reach the network.

The SAR limit also adopted by Europe is 2.0 W/kg averaged over 10 grams of tissue. The highest SAR value for this device type when tested at the ear is 0.761 W/kg, and when properly worn on the body is 0.617 W/kg.

Disposal and Recycling Information



This symbol on the device (and any included batteries) indicates that they should not be disposed of as normal household garbage. Do not dispose of your device or batteries as unsorted municipal waste. The device (and any batteries) should be handed over to a certified collection point for recycling or proper disposal at the end of their life.

For more detailed information about the recycling of the device or batteries, contact your local city office, the household waste disposal service, or the retail store where you purchased this device.

The disposal of this device is subject to the Waste from Electrical and Electronic Equipment (WEEE) directive of the European Union. The reason for separating WEEE and batteries from other waste is to minimize the potential environmental impacts on human health of any hazardous substances that may be present.

Reduction of Hazardous Substances

This device is compliant with the EU Registration, Evaluation, Authorisation and Restriction of Chemicals (REACH) Regulation (Regulation No 1907/2006/EC of the European Parliament and of the Council) and the EU Restriction of Hazardous Substances (RoHS) Directive (Directive 2002/95/EC of the European Parliament and of the Council). For more information about the REACH compliance of the device, visit the Web site www.huaweidevice.com/certification. You are recommended to visit the Web site regularly for up-to-date information.

EU Regulatory Conformance

Hereby, Huawei Technologies Co., Ltd. declares that this device is in compliance with the essential requirements and other relevant provisions of Directive 1999/5/EC.

For the declaration of conformity, visit the Web site www.huaweidevice.com/certification.

CE 0678 !

■ Note:

Observe the national local regulations in the location where the device is to be used. This device

may be restricted for use in some or all member states of the European Union (EU).

■ **Note:**

This device may be operated in all member states of the EU.

France: Outdoor use limited to 10 mW e.i.r.p. within the band 2454-2483.5 MHz.

Italy: For private use, a general authorisation is required if WAS/RLAN's are used outside own premises. For public use, a general authorisation is required.

Norway: This subsection does not apply for the geographical area within a radius of 20 km from the centre of Ny-Ålesund.

13.2 FAQ

How do I prevent automatic switching of orientation when rotating phone?

Touch  > **Settings** > **Display** > **Auto-rotate screen** to disable the function.

How do I set the unlock pattern?

Touch  > **Settings** > **Location & security** > **Set up screen lock** > **Pattern**.

How can I change the keyboard mode?

Touch and hold the area where you write text and then select the input method you prefer.

How do I stop the song playing in the background?

Drag the notifications bar downwards to open the notifications panel. Then touch the music playing notification to go to the music playing screen.

How do I return to the calling screen?

While on a call and you are on another screen, drag the notifications bar downwards to open the notifications panel. Then touch the current call notification to return to the calling screen.

How do I create an application shortcut on the Home screen?

Touch and hold an application icon on the main menu screen until the Home screen is displayed. Then drag the icon where you want it to go and release your finger.

How do I hide the keyboard?

Touch  to hide the keyboard.



HUAWEI
for Android™

Android is a trademark of Google Inc.
Use of this trademark is subject to Google Permissions.