

# IDEOS S7 Slim

User Guide

# Contents

<b>1 Getting started.....</b>	<b>1</b>
<b>1.1 About your Tablet.....</b>	<b>1</b>
<b>1.2 Getting to know your Tablet .....</b>	<b>1</b>
<b>1.3 Installation .....</b>	<b>2</b>
1.3.1 To remove the back cover .....	2
1.3.2 To install or remove the SIM card.....	3
1.3.3 To install or remove the battery .....	4
1.3.4 To install the back cover .....	5
<b>1.4 Turning the Tablet on or off .....</b>	<b>5</b>
1.4.1 To turn the Tablet on .....	5
1.4.2 PIN protection .....	6
1.4.3 To turn the Tablet off .....	6
<b>1.5 Charging the battery .....</b>	<b>6</b>
<b>1.6 Keys .....</b>	<b>7</b>
<b>1.7 Using the touchscreen.....</b>	<b>8</b>
<b>1.8 Home screen .....</b>	<b>9</b>
1.8.1 Getting to know the Home screen.....	10

1.8.2 Home screen extensions .....	11
1.8.3 Customizing the Home screen .....	11
1.9 Locking and unlocking the screen .....	13
1.9.1 To lock the screen .....	13
1.9.2 To set screen timeout period .....	13
1.9.3 To unlock the screen .....	13
1.9.4 To set unlock pattern .....	14
1.10 Text input .....	14
1.10.1 Using onscreen keyboard to enter text .....	14
1.10.2 Cutting or copying text .....	15
1.11 Opening and switching applications .....	16
1.12 Opening the <b>Settings</b> list .....	16
1.13 Setting date and time .....	17
1.14 Installing or removing the microSD card .....	17
1.15 Connecting to or disconnecting from a computer using USB .....	18
1.16 Connecting the Tablet to a TV .....	20
2 Wireless networks .....	21
2.1 Wi-Fi .....	21
2.1.1 Opening Wi-Fi settings .....	22

2.1.2	Turning Wi-Fi on or off .....	22
2.1.3	Connecting to a Wi-Fi network.....	22
2.1.4	Turning open network notification on or off .....	23
2.1.5	Adding a Wi-Fi Network .....	23
2.1.6	Forgetting a Wi-Fi network.....	24
<b>2.2</b>	<b>Bluetooth .....</b>	<b>24</b>
2.2.1	Opening Bluetooth settings.....	24
2.2.2	Turning Bluetooth on or off.....	24
2.2.3	Changing the Bluetooth name of your Tablet Tablet.....	25
2.2.4	Connecting to Bluetooth devices .....	25
2.2.5	Disconnecting from or unpairing a Bluetooth device .....	26
2.2.6	Configuring the Bluetooth features .....	26
<b>2.3</b>	<b>Mobile networks .....</b>	<b>26</b>
2.3.1	Opening Mobile network settings.....	26
2.3.2	Turn Data roaming on or off .....	27
2.3.3	Setting GSM/UMTS options.....	27
2.4	Turning airplane mode on or off.....	27
<b>3</b>	<b>Google Services .....</b>	<b>28</b>
3.1	Creating a Google Account.....	28

<b>3.2 Using Market .....</b>	<b>29</b>
3.2.1 Searching for Applications .....	29
3.2.2 Installing an Application .....	29
3.2.3 Uninstalling an Application .....	30
<b>4 Browser.....</b>	<b>30</b>
4.1 Browsing webpages .....	30
4.1.1 To open Browser .....	30
4.1.2 To navigate within a webpage .....	31
4.1.3 To navigate among webpages .....	31
4.2 Working with the bookmarks.....	32
4.2.1 To add a webpage to the bookmarks list .....	32
4.2.2 To open the bookmarks list .....	33
4.2.3 To open a bookmark .....	33
4.2.4 To edit a bookmark.....	33
4.2.5 To share a bookmark .....	33
4.2.6 To delete a bookmark.....	33
4.3 Downloading files .....	33
4.3.1 To download and install only trusted applications .....	34
4.3.2 To download a file .....	34

<b>5 Email .....</b>	<b>34</b>
<b>5.1 Opening Email.....</b>	<b>34</b>
<b>5.2 Adding and deleting email accounts .....</b>	<b>34</b>
<b>5.2.1 To add an Email account.....</b>	<b>34</b>
<b>5.2.2 To delete an email account .....</b>	<b>35</b>
<b>5.3 Sending and responding to email messages.....</b>	<b>35</b>
<b>5.3.1 To compose and send email messages.....</b>	<b>35</b>
<b>5.3.2 To receive email messages.....</b>	<b>36</b>
<b>5.3.3 To read an email message.....</b>	<b>36</b>
<b>5.3.4 To reply to or forward an email message .....</b>	<b>36</b>
<b>5.3.5 To delete an email message .....</b>	<b>36</b>
<b>6 Calls .....</b>	<b>36</b>
<b>6.1 Making calls by dialing.....</b>	<b>36</b>
<b>6.2 Answering, rejecting or ending calls .....</b>	<b>37</b>
<b>6.3 Working with the Call log.....</b>	<b>37</b>
<b>6.3.1 To open the Call log.....</b>	<b>37</b>
<b>6.3.2 To make calls from the Call log .....</b>	<b>37</b>
<b>6.3.3 To add numbers to the Contacts .....</b>	<b>38</b>
<b>6.3.4 To clear the Call log .....</b>	<b>38</b>

6.4 Calling listed contacts .....	38
6.5 Calling favorite contacts .....	38
<b>7 Messaging.....</b>	<b>39</b>
7.1 Opening Messaging.....	39
7.2 Exchanging messages .....	39
7.2.1 To create and send a text message .....	39
7.2.2 To create and send a multimedia message.....	40
7.2.3 To view and respond to a message.....	40
7.2.4 To view details about a message .....	41
7.2.5 To forward or delete a message.....	41
<b>8 Contacts .....</b>	<b>41</b>
8.1 Opening Contacts.....	41
8.2 Creating a contact .....	41
8.3 Searching for contacts.....	42
8.4 Editing contacts .....	42
8.4.1 To edit contact details.....	42
8.4.2 To set default phone number .....	43
8.4.3 To delete a contact.....	43
8.4.4 To set contact group to display.....	43

8.5 Editing favorite contacts .....	44
8.5.1 To add a contact to favorites .....	44
8.5.2 To remove a contact from favorites .....	44
<b>9 Multimedia applications.....</b>	<b>44</b>
9.1 Sound Recorder .....	44
9.2 Camera and Camcorder .....	45
9.3 Music.....	45
9.4 Videos .....	45
9.5 Gallery .....	45
9.5.1 Opening Gallery .....	46
9.5.2 Viewing a Picture .....	46
9.5.3 Sharing a Picture .....	46
9.5.4 Rotating a Picture .....	46
9.5.5 Cropping a picture .....	46
9.5.6 Playing a Video .....	47
<b>10 Handy applications.....</b>	<b>47</b>
10.1 Calendar .....	47
10.2 Alarm Clock .....	47
10.3 Calculator .....	48


<b>10.4 Documents .....</b>	<b>48</b>
<b>10.5 File Manager .....</b>	<b>48</b>
<b>10.5.1 Creating a Folder .....</b>	<b>48</b>
<b>10.5.2 Deleting files and folders.....</b>	<b>48</b>
<b>10.5.3 Searching a File.....</b>	<b>48</b>
<b>11 Security settings.....</b>	<b>49</b>
<b>11.1 Enabling the SIM card PIN .....</b>	<b>49</b>
<b>11.2 Changing the SIM card PIN.....</b>	<b>49</b>
<b>12 Personal Information and Data Security .....</b>	<b>50</b>
<b>13 Legal Notice .....</b>	<b>51</b>

# 1 Getting started

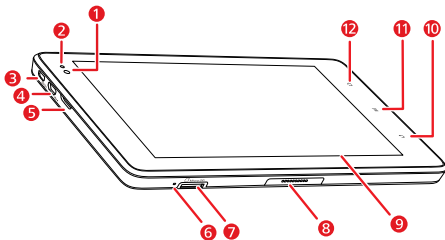
## 1.1 About your Tablet

Thanks for choosing IDEOS S7 Slim.

The IDEOS S7 Slim (Tablet for short) is an information terminal that provides convenient and high quality picture, audio, video, networking, and information services based on the Android open source operating system and supports classification and dragging of elements on the home screen. With a full touchscreen, and ultra-thin design, the IDEOS S7 Slim is portable, stylish in appearance, and technically appealing in specification, fully satisfying users' needs.

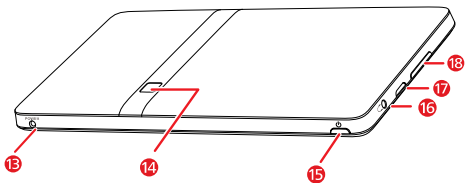
 Figures in this document are for reference only.

## 1.2 Getting to know your Tablet



- 1 Front camera lens
- 2 Ambient light sensor
- 3 HDMI interface
- 4 Micro USB interface

- 5 Speaker
- 6 Microphone
- 7 microSD card slot
- 8 Dock interface
- 9 LCD screen
- 10 **Back** key
- 11 **Menu** key
- 12 **Home** key

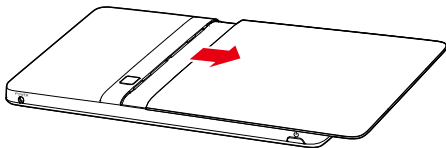


- 13 Power interface
- 14 Rear camera lens
- 15 **Power** key
- 16 Headset jack
- 17 Speaker
- 18 **Volume Up/Down** key

## 1.3 Installation

### 1.3.1 To remove the back cover

To remove the back cover, refer to the following figure.

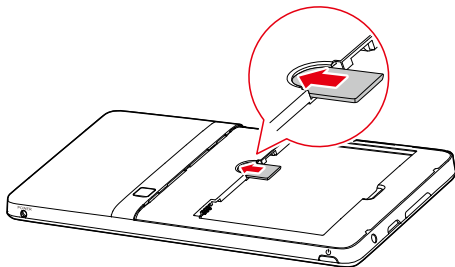


### 1.3.2 To install or remove the SIM card

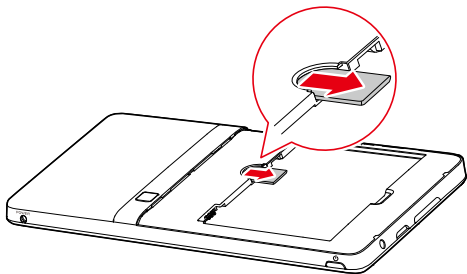


Before installing or removing the SIM card, power off the Tablet.

Insert your SIM card fully into the SIM card slot as shown in the following figure.

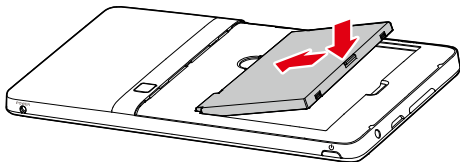


To remove the SIM card, do as shown in the following figure.

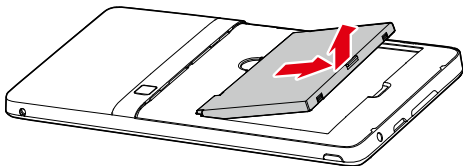


### 1.3.3 To install or remove the battery

To install the battery, refer to the following figure.

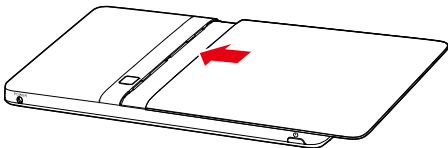


To remove the battery, do as shown in the following figure.



### 1.3.4 To install the back cover

To install the back cover, refer to the following figure.

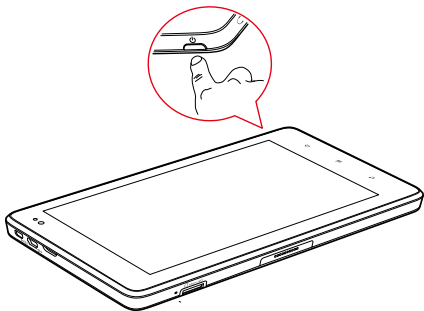


## 1.4 Turning the Tablet on or off

### 1.4.1 To turn the Tablet on

Before you turn the Tablet on, ensure that the SIM card has been correctly installed and that the battery is correctly installed or the Tablet has been properly connected to the power supply.

To turn the Tablet on, press and hold the **Power** key for about two seconds.



### 1.4.2 PIN protection

If your SIM card is preset with a PIN, the Tablet prompts you to enter the PIN.



The PIN may have been provided by your service provider with your SIM card. If you have lost your PIN, consult your service provider.

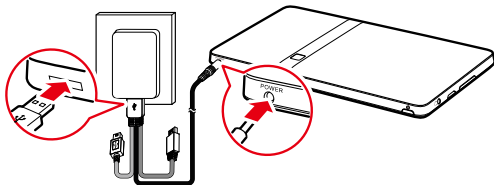
### 1.4.3 To turn the Tablet off

1. Press and hold **Power** key to open the **Tablet options** menu.
2. Touch **Shut Down**.
3. Touch **OK** to confirm shutdown.

## 1.5 Charging the battery

Before charging the battery, ensure that the battery is properly installed in your Tablet.

To charge the battery, you can connect the Tablet to the power supply through the power adapter, as shown in the following figure.



## 1.6 Keys

You access a variety of functions and shortcuts by using the physical keys in addition to buttons displayed on the touchscreen.

- **Power**
  - Press to turn the Tablet on when it is off.
  - Press to turn off and lock the screen when the Tablet is on. Press again to turn the screen on.
  - Press and hold to open a menu with options for Silent mode, Airplane mode, and for powering off the Tablet.
- **Home**
  - Press to open the Home screen. If you are viewing the extensions to the Home screen, it returns to the first panel of the Home screen.
  - Press and hold to open the most recently used applications screen.
- **Menu**

- Press to open an option menu with items relevant to the current screen or application.
- Press and hold to open the keyboard to perform quick search (only available on some screens).
- If the screen unlock pattern has not been set, press to unlock the locked screen.
- **Back**
  - Press to return to the previous screen.
  - Press to exit from the current application.
  - If the onscreen keyboard is open, press to close the keyboard.
- **Volume Up/Down**
  - When a call is in progress, press to increase or decrease the call volume.
  - When the Tablet is ringing, press to silence the ringer.
  - On the Home screen when no call is in progress, press to increase or decrease the ringtone volume, or set the Tablet to silent mode.
  - In other applications, press to control the volume of music, spoken directions, and other audio.
  - Press and hold to quickly increase the ringtone volume to maximum or minimum.

## 1.7 Using the touchscreen

Using your finger, you can manipulate target items such as applications and controls. The Tablet supports the following actions.

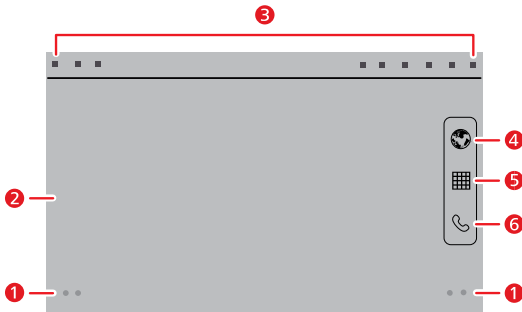
Action	Description
Touch	Simply touch items on the screen, such as applications and controls. For example, you can type letters and symbols using the onscreen keyboard.

Action	Description
Touch and hold	Touch and hold an item on the screen until an action occurs. For example, you can usually touch and hold the screen to open the context menu of the active item.
Drag	Touch and hold an item, and then move your finger on the screen until you reach the target position. For example, you can drag a shortcut to the trash to delete it.
Flick	Flick your finger vertically or horizontally across the screen. For example, you can flick up and down to manipulate a scroll bar and flick left and right to switch between pictures.

## 1.8 Home screen

The Home screen is the starting point to access all the applications. When you sign in, press the **Home** key to display, the Home screen. You can customize the Home screen with different wallpapers and display the items you want easiest access to.

### 1.8.1 Getting to know the Home screen



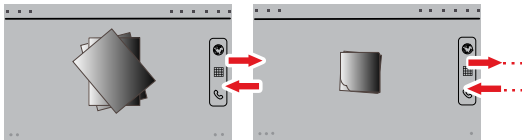
Item	Description
1	<b>Screen switching dots.</b> Indicate the number of the screens on the left or right. Touch the left or right dots to switch between the screen.
2	<b>Display area.</b> Shows the operation and display areas of your Tablet.
3	<b>Notifications bar.</b> Displays the reminders and status icons of your Tablet. Click down to open the notifications panel.
4	Touch to open the Browser.
5	Touch to view all your applications.
6	Touch to open the Phone application.

...

The pictures are provided only for reference. Your Home screen and Applications screen might look a little different. For details, see the actual product.

### 1.8.2 Home screen extensions

Fllick your finger across the Home Screen to go to the Home screen extensions. Home screen extensions to the right provide more space for shortcuts, widgets, and other items.



### 1.8.3 Customizing the Home screen

You can add items such as shortcuts, widgets and folders to the Home screen if there is enough room. You can also change the wallpaper of the Home screen.

#### To add an item

1. Flick the Home screen to where you want to add the item.
2. Open the **Add to Home screen** menu, either of the following ways:
  - Touch and hold a blank area on the Home screen until the **Add to Home screen** menu is displayed.
  - When you are on the Home screen, press the **Menu** key, and touch **Add** in the menu opened.
3. In the **Add to Home screen** menu, touch the item type to add. You can add the following types of items to the Home screen:

- **Shortcuts** Add an application shortcut, a webpage bookmark, a favorite contact, a music playlist, and other items.
- **Widgets** Add any of a variety of miniature widgets such as an analog clock, a calendar, a music player, a picture frame and many other items.
- **Folders** Add a folder where you can organize your Home screen items.
- **Wallpapers** Set the Home screen wallpaper.

For example, you can touch **Folders** > **New folder** to add a folder to the Home screen, and drag items on the screen to your folder.

### To move an item

1. Touch and hold an item's icon on the Home screen until the icon magnifies.
2. Without lifting your finger, drag the icon to the target position on the screen.



Pause at the bottom of the screen to drag the item onto the corresponding Home screen panel.

3. Release the item by lifting your finger.

### To remove an item

1. Touch and hold an item icon on the Home screen until the item icon magnifies and the trash icon pops up from on right hand side of the screen.
2. Without lifting your finger, drag the item icon to the trash.
3. When both the item and the trash are focused, release the item by lifting your finger.

### To change the wallpaper

You can change the wallpaper by adding a wallpaper, or as follows.

1. On the Home screen, press the **Menu** key and touch **Wallpaper** on the bottom menu.
2. Choose one of the following steps.
  - Touch **Gallery** to select a picture and set it as the wallpaper.
  - Touch **Live wallpapers** to select a picture and set it as the wallpaper.

- Touch **Wallpapers** to select a picture and set it as the wallpaper.

### To rename a folder

1. Open a folder. Then touch and hold the title bar of the folder window until the **Rename folder** dialog appears.
2. Enter a new name, and then touch **OK**.

## 1.9 Locking and unlocking the screen

### 1.9.1 To lock the screen

When the Tablet is on, press the **Power** key to turn off and lock the screen.

When the Tablet remains idle for a time period that you have set, the screen will automatically lock.



To save your battery or prevent accidental taps when not in use, or when you want to wipe smudges off your touchscreen, turn off and lock the screen.

### 1.9.2 To set screen timeout period

To set how long your screen waits before it turns off automatically, press the **Home** key to go to the Home screen then press the **Menu** key, and touch **Settings > Display > Screen timeout**.

### 1.9.3 To unlock the screen

When the screen is off, you can press the **Power** key to turn on it, and then unlock the screen as follow:

- If you have not set up a screen unlock pattern, press the **Menu** key to unlock the screen, or follow the instructions displayed on the screen and flick upwards to unlock the screen.
- If you have set up a screen unlock pattern, the Tablet prompts you to draw the pattern on the screen to unlock it.

### 1.9.4 To set unlock pattern

To set the unlock pattern, press the **Home** key to go to the Home screen then press the **Menu** key, touch **Settings > Location & security > Set up screen lock > Pattern**, and then follow the instructions on the screen .

## 1.10 Text input

You can enter and edit text in text fields and use menu commands to cut, copy, and paste text, within or across applications.

### 1.10.1 Using onscreen keyboard to enter text

Touch a text field where you want to enter text to open the onscreen keyboard. The following tips will help you to enter text more efficiently.

1. Touch and hold the text field to switch the input method if necessary.
2. Touch the keys on the keyboard to start typing. The following section takes the Android keyboard as an example.
  - When you are typing, the characters you have entered appear in a line above the keyboard, and some with suggestions for the word you are typing to the right. Press space or a punctuation mark to enter the suggestion by default, or touch another suggestion to enter it. You can touch and hold the leftmost word to save it to the dictionary.
  - Touch the up arrowhead key (Shift key) once to capitalize the next letter you type. Or touch and hold the up arrowhead key (Shift key) for all caps.
  - When you touch a key, a larger version displays briefly over the keyboard. Keys with alternate characters display an ellipsis (...) below the character.
  - Touch and hold a vowel or the C, N, S, or Y key to open a small window where you can touch an accented vowel or other alternate letter.
  - Touch and hold the Period key ( . ) to open a small window with a set of common symbol keys.

- Touch the DEL key to erase a character to the left of the cursor. Touch and hold the DEL key to erase all characters to the left of the cursor.
  - Touch the Symbols key (?123) to switch to the numbers and symbols keyboard, and touch the alphabet key (ABC) to switch back.
  - On the numbers and symbols keyboard, touch the ALT key to view additional symbols, and touch it again to switch back.
  - Touch and hold almost any of the number and symbol keys to open a window of additional symbols.
3. When you want to edit the text you have entered, touch to move the cursor to the location where you want to add or delete text. The cursor is a vertical bar that indicates where text you type or paste is inserted.
  4. When you have finished typing, touch the button to the right of the text field or the same button on the keyboard or press the Back key to close the keyboard.

### 1.10.2 Cutting or copying text

To quickly cut or copy all the text in a text field:

1. Touch the text field that contains the text to cut or copy to open it.
2. Touch and hold the text field to display the **Edit text** menu.
3. Touch **Cut all** or **Copy all**.

To cut or copy selected text in a text field:

1. Touch the text field that contains the text to cut or copy.
2. Touch to move the cursor to the beginning or end of the text to be selected.
3. Touch and hold the text field to display the **Edit text** menu.
4. Touch **Select text** and touch to move the cursor to the end or beginning of the text to be selected. Or touch **Select all** to select all the text in the text field. The selected text is highlighted.
5. Touch and hold the text field again to display the **Edit text** menu.

## 6. Touch **Cut** or **Copy**.

After you cut or copy text, the text is stored in a temporary area so that you can paste it into other text field. Before you can paste, you must have cut or copied text at least once. Once you cut or copy text, you can paste multiple times. To paste the most recent text that you have cut or copied in another text field:

1. Touch the text field where you want to paste the text.
2. Touch to move the cursor to the location where you want to paste the text.
3. Touch and hold the text field to display the **Edit text** menu.
4. Touch **Paste**.

## 1.11 Opening and switching applications

To open an application, touch its shortcut on the Home screen, or on the Applications screen which can be opened by touching the Application button on the Home screen.

To switch to a recently used application, press and hold the **Home** key, and touch the application icon in the small window that opens with shortcuts to applications that you have used recently.

## 1.12 Opening the **Settings** list

Open the settings list to view or change the settings of wireless and cellular networks, call, sound and display, location and security, applications, language and keyboard, date and time, and other items.

- When you are on the Home screen, press the **Menu** key, and touch **Settings** in the menu opened.
- When you are on the home screen, touch the Application button and touch **Settings** to open the scroll list.

## 1.13 Setting date and time

By default, the Tablet automatically uses the network provided date, time zone, and time.



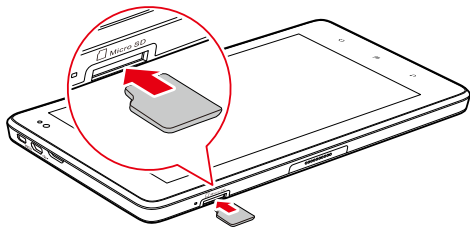
When the time provided by the network is automatically used, you cannot set the date, time, and time zone by yourself.

To manually set date and time:

1. Open the **Settings** list.
2. Touch **Date & time**.
3. Touch **Automatic** to make it unchecked.
4. Touch **Set date**. Then touch the plus button or the minus button to adjust the date, month, and year, or touch the text field of date, month, and year to enter them. Touch **Set** when finished.
5. Touch **Select time zone**, then select the correct time zone from the list. Scroll down the list to view more time zones.
6. Touch **Set time**. Then touch the plus button or minus button to adjust the hour and minute, or touch the text field of hour and minute to enter them. Touch **Set** when finished.

## 1.14 Installing or removing the microSD card

Insert your microSD card into the microSD card slot until it clicks into position as shown in the following figure.

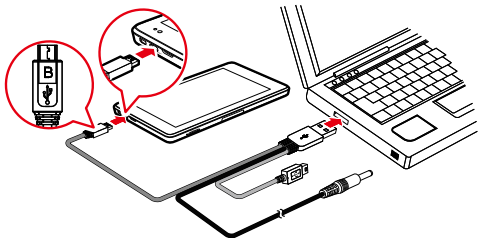


To remove the microSD card, gently push the card into the slot, then release it. The card will eject from the slot, and can then be removed.

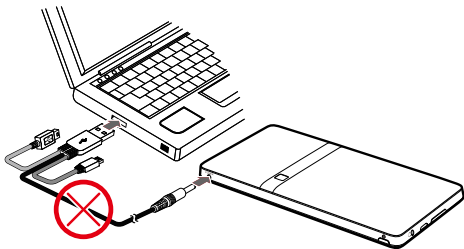
## **1.15 Connecting to or disconnecting from a computer using USB**

To connect your Tablet to a computer using USB:

1. Use the USB cable supplied with your Tablet to a USB port on your computer. The Tablet displays a notification indicating that the USB is connected.



Do not connect the Tablet to a PC to charge the Tablet, as shown in the following figure. Doing so may damage your Tablet and the PC.



2. Touch **Turn on USB storage** in the dialog that opens to confirm that you want to transfer music, pictures, and other files between your Tablet storage or microSD card storage and the computer.

To disconnect your Tablet from the computer, safely and avoid losing information, carefully follow your computer operating system's instructions to disconnect USB devices , and do the following:

1. When you are on the Home screen, press the **Menu** key, and touch **Notifications** in the menu that opens.
2. Touch the **Turn off USB storage** in the **Ongoing** list.
3. Touch **Turn off USB storage** in the dialog opens.

## 1.16 Connecting the Tablet to a TV

You can connect your Tablet to a TV to output audio and video from the Tablet to the TV. Playing pictures, videos, and music on your Tablet via a TV brings you a better experience.

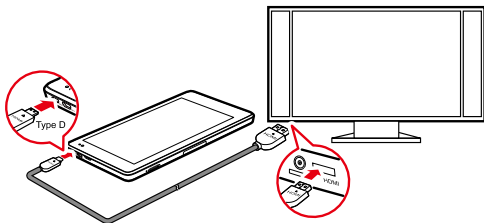
You must use a High-Definition Multimedia Interface (HDMI) cable to connect the Tablet to the TV. As the HDMI cable is an optional accessory, it may not be included in the packing box. When you purchase an HDMI cable, check the connector type of the cable.

- The connector that connects the HDMI cable to the HDMI interface of your Tablet is a Type D connector.
- The connector that connects the HDMI cable to the HDMI interface of the TV varies according to the HDMI interface of the TV. Typically, it is a Type A connector.

Your Tablet's HDMI connection supports only 800 × 480 pixels resolution output format. Due to the fact that some TVs may not support 800 × 480 pixels HDMI resolution, you may not be able to view Tablet display on the TV. Please consult your TV manufacture for information on HDMI support.

Connect your Tablet to the TV as follows:

1. Connect the HDMI cable to the HDMI interfaces of the Tablet and the TV.



2. Select the TV's correct program source for the HDMI interface.

## 2 Wireless networks

Your Tablet can connect to a variety of wireless networks and devices, including Wi-Fi data networks, Bluetooth devices such as headsets and mobile networks for voice and data transmission.



Using a wireless device or accessory while driving may cause distraction and may be illegal. Always obey the laws and drive safely.

### 2.1 Wi-Fi

Wi-Fi is a wireless networking technology that can provide wireless Internet access over distances of up to 300 feet (100 meters). The capability of your Wi-Fi connection depends on the Wi-Fi router and the surroundings in which it works. To use Wi-Fi on your Tablet, you need to access a wireless access point or "hotspot". You can simply connect to some open access points, but for others, that are hidden or that have security protection such as authentication and encryption, you will be required to configure your Tablet to gain access.

### 2.1.1 Opening Wi-Fi settings

You can turn Wi-Fi on or off, turn the open network notification on or off, connect to a Wi-Fi network and add Wi-Fi networks in Wi-Fi settings list. To open Wi-Fi settings list, do as follows.

1. Open the **Settings** list.
2. Touch **Wireless & networks**, and then touch **Wi-Fi settings**.



When you are viewing the **Wi-Fi settings** list, you can press the **Menu** key and touch **Advanced** in the menu that opens to see your IP settings or other Wi-Fi details.

### 2.1.2 Turning Wi-Fi on or off

To turn Wi-Fi on or off, you can open **Wi-Fi settings** and touch **Wi-Fi** to make it checked or unchecked.



To extend your battery life, turn Wi-Fi off when you are not using it.

### 2.1.3 Connecting to a Wi-Fi network

When you turn Wi-Fi on, the available Wi-Fi networks found within range are listed with the names and security scheme information, and secured networks are indicated with a lock icon. You can view the **Wi-Fi networks** list by opening **Wi-Fi settings**.

To connect to a Wi-Fi network, touch a network you want to connect to in the **Wi-Fi networks** list on the **Wi-Fi settings** screen. If the network is open, you are prompted to confirm that you want to connect to that network by touching **Connect**. If the network is secured, you are prompted to enter a password or other credentials. (Contact your service provider for details.)

If your Tablet can't connect to the network after you enter a password, check whether the encryption method, password type, password, and certificate are correct.

When the encryption mode is set to WEP, if the network is in a state of obtaining IP after you enter a password, check whether the password is correct. For a solution, please touch its

name in the **Wi-Fi networks** list, touch **Forget**, enter the correct WEP password and try again.



When you are in range and Wi-Fi is on, you will automatically reconnect to available networks that you have connected to previously.

When you are connected to a network, you can touch its name in the **Wi-Fi networks** list for details about the speed, security, address, and related settings.

### 2.1.4 Turning open network notification on or off

When Wi-Fi is on, you can touch **Network notification** to make it checked or unchecked to turn open network notification on or off in the **Wi-Fi settings** list, and you receive or stop receiving notifications in the status bar when open networks in range are detected.

### 2.1.5 Adding a Wi-Fi Network

When a Wi-Fi network with any security credentials does not broadcast its name (SSID), or it is not in range, you can add and connect to it when Wi-Fi is on. You need to contact the service provider for details about the security scheme that is deployed on it and to obtain the password or other required security credentials. The name (SSID) and credentials are saved and you are automatically connected to this network if it is in range and Wi-Fi is on.

When Wi-Fi is on, do as the following steps to add a Wi-Fi Network.

1. In the **Wi-Fi settings** list, flick down and touch **Add Wi-Fi network**.
2. Enter the name (SSID) of the network in the **Network SSID** text field. If the network is secured, touch the **Security:** button and then touch to select the security scheme in the menu that opens.
3. Enter any required security credentials.
4. Touch **Save**.

### 2.1.6 Forgetting a Wi-Fi network

To forget a Wi-Fi network that you do not want to connect to automatically or you no longer use when Wi-Fi is on, do as follows.

1. Touch and hold a Wi-Fi network you have connected to previously in the **Wi-Fi networks** list on the **Wi-Fi settings** screen.
2. Touch **Forget network** in the menu that opens.

## 2.2 Bluetooth

Bluetooth is a short-range wireless communication technology for exchanging information between Bluetooth devices such as headphones and mobile phones over a distance of about 10 meters. The capability of your Bluetooth connection depends on your surroundings and may be reduced by obstacles such as a wall or other electronic devices.

### 2.2.1 Opening Bluetooth settings

You can turn Bluetooth on or off, change the Bluetooth name of your Tablet, connect to a Bluetooth device and scan to view Bluetooth devices in the Bluetooth settings list.

To open Bluetooth settings list:

1. Open the **Settings** list.
2. Touch **Wireless & networks**, and touch **Bluetooth settings**.



When you are viewing the **Bluetooth settings** list, you can touch **Scan for devices** in the menu that opens to scan for Bluetooth devices.

### 2.2.2 Turning Bluetooth on or off

To turn Bluetooth on or off, open the **Bluetooth settings** and touch **Bluetooth** to make it checked (on) or unchecked (off).



To extend your battery life, turn Bluetooth off when you are not using it.

### 2.2.3 Changing the Bluetooth name of your Tablet Tablet

The Bluetooth name of your Tablet is visible to other Bluetooth devices when you connect to them. When Bluetooth is on, do the following to change the Bluetooth name of your Tablet:

1. Touch **Device name** in the **Bluetooth settings** list.
2. Enter the new name in the dialog that opens, and then touch **OK**.

### 2.2.4 Connecting to Bluetooth devices

The first time you connect to a Bluetooth device, you must pair the Bluetooth of your Tablet with the Bluetooth device to make sure they connect securely to each other; after this, you can simply connect to a paired device when Bluetooth is on.

#### To pair with a Bluetooth device

1. When Bluetooth is on, all the available Bluetooth devices in range are listed in the **Bluetooth devices** list on the **Bluetooth settings** screen.
2. Touch **Discoverable** to make the Bluetooth of your Tablet discoverable.
3. If the device you want to pair with is not in the list, follow the instruction documentation that came with the device to make it discoverable and touch **Scan for devices** to display it.
4. Touch the device entry in the **Bluetooth devices** list to pair them. The devices pair with each other.
5. If you are prompted to enter a passkey (for example 0000), refer to the documentation that came with the device to learn its passkey. If the pairing is successful, your Tablet connects to the device.

#### To connect to a paired Bluetooth device

When you switch off Bluetooth devices or a paired Bluetooth device come back into range, you can reconnect to it. To automatically reconnect your Tablet with the paired device, simply turn on the device. To manually reconnect your Tablet with a paired device, touch the device name in the **Bluetooth devices** list.

### 2.2.5 Disconnecting from or unpairing a Bluetooth device

To automatically disconnect your Tablet from a paired device, simply turn off the device.

To manually disconnect your Tablet from a paired device or unpair this device to erase all the pairing information about it, do the following:

1. Touch and hold the device in the **Bluetooth devices** list on the **Bluetooth settings** screen.
2. Touch **Unpair** to confirm that you want to disconnect or unpair.

### 2.2.6 Configuring the Bluetooth features

Some Bluetooth devices have multiple profiles. Profiles can include the ability to transmit conversations, or to play music in stereo. You can select which profiles you want to use with your Tablet to configure the Bluetooth features.

1. Touch and hold the device in the **Bluetooth devices** list on the **Bluetooth settings** screen.
2. Touch **Options...** in the menu that opens.
3. A screen opens with a list of profiles for the device.
4. Touch a profile to make it checked or checked to use it or not.
5. When you are finished, press the **Back** key.

## 2.3 Mobile networks

Your Tablet with a SIM card is configured to use the mobile networks of your wireless service provider for voice and data calls.



If your Tablet does not connect to a network when you insert a SIM card and turn it on, contact your service provider to obtain the details of its access point.

### 2.3.1 Opening Mobile network settings

1. Open the **Settings** list.

2. Touch **Wireless & networks**, and then touch **Mobile networks**.

### 2.3.2 Turn Data roaming on or off

When **Data roaming** is on, your Tablet can transmit and receive data over other carriers mobile networks when you leave your carriers mobile network service area. To turn **Data roaming** on or off, do the following:

1. Open the **Mobile networks** settings screen.
2. Touch **Data roaming** to turn it on or off (checked or unchecked).



With **Data roaming** off, you can still transmit and receive data across a Wi-Fi connection.

### 2.3.3 Setting GSM/UMTS options

If you and your wireless service provider determine that you need to change the settings of your current access point name (APN) or to create a new one, you must obtain the APN and detailed settings from your provider.

1. Open the **Mobile networks** settings screen, and touch **GSM/UMTS Options > Access Point Names**.
2. Touch an existing APN to edit it. Or press the **Menu** key and touch **New APN**. Enter the APN settings supplied by your service provider by touching each setting that you need to edit.
3. When you are finished, press the **Menu** key and touch **Save**. If you created a new APN, touch it in the APNs screen to start using it.

## 2.4 Turning airplane mode on or off

In airplane mode, all wireless radios (mobile networks service, Bluetooth, and Wi-Fi) are turned off. Using a mobile device or accessory with wireless radios while on board an aircraft may cause interference and is illegal in many countries. Always obey applicable laws and turn the airplane mode on.

To turn Airplane mode on or off, you can press and hold the **Power** key and touch **Airplane mode** in the menu that opens. You can also do as follows.

1. Open the **Settings** list.
2. Touch **Wireless & networks**, and touch **Airplane mode** to make it checked or unchecked.

## 3 Google Services

### 3.1 Creating a Google Account

When you first turn on your Tablet, touch a Google service icon, such as **Market**, and you will be prompted to sign in to your Google account.



When creating a Google account, ensure that your Tablet is connected to a network.

If you already have a Google account, touch **Sign in** and enter your username and password.

If you do not have a Google account, you can create one:

1. After reading the setup information, touch **Next**.
2. Touch **Create**.
3. Enter a first name, last name, and user name for your Google account, and then touch **Next**. The tablet will connect to the Google server to check whether the username is available. If the username you entered is already in use, you will be prompted to choose another one or select one from a list.
4. Enter and confirm your Google account password.
5. Select a security question from the drop down menu, and then enter the answer.
6. Touch **Create**.
7. When **Google Terms of Service** screen appears, touch **I agree, Next**.
8. Enter the characters that appear on the screen, and then touch **Next**.



To use another account, go to the **Accounts & sync** settings screen, and touch **Add account** to select which type of accounts you want to add.

## 3.2 Using Market

Android Market provides direct access to applications and games which you can download and install on your Tablet.

### 3.2.1 Searching for Applications

There are a few different ways to find applications on the Market screen, including:

1. Featured applications.
2. List of games.
3. Search function.
4. Your downloads.

### 3.2.2 Installing an Application

1. On the **Market** screen, touch **Apps**.
2. Touch a category, and then touch the item you want to download.
3. To install the item, touch **FREE** (if the item is free) or **Buy**, whichever is displayed.
4. To check the progress of a download, open the notification panel. Most applications are installed within seconds. To stop an item from downloading, touch **Cancel**.
5. After the application has been downloaded and installed on your Tablet, the content download icon appears in the notification bar.



If you want to install a non-Market application, press the **Menu** key and touch **Settings** > **Applications**, and then select the **Unknown sources** to allow installation of the non-Market application.

### 3.2.3 Uninstalling an Application

1. On the Market screen, touch **My apps**.
2. Touch the application you want to uninstall, and then touch **Uninstall**.
3. When prompted, touch **OK** to remove the application from your Tablet.
4. Choose the reason for removing the application, and then touch **OK**.

## 4 Browser

Use **Browser** to view webpages and to search for information on the web.

### 4.1 Browsing webpages

#### 4.1.1 To open Browser

Touch **Browser** on the Home screen or on the Applications screen to open the **Browser** and start surfing the web.

##### To enter a webpage address

When you are on a **Browser** screen, touch the address bar to enter the address (URL) of a new webpage. When you are entering the address, the web search makes suggestions of webpages and queries. You can touch a suggestion or continue to enter the address and touch → to open a webpage.

##### To refresh a webpage

When you are on a **Browser** screen, press the **Menu** key and touch **Refresh** to reload the webpage and view the updated content.

##### To stop loading a webpage

If a webpage is taking a long time to open, or if you change your mind, you can press the **Menu** key and touch **Stop** to stop it from loading.

### 4.1.2 To navigate within a webpage

The following tips help you to navigate within a webpage.

- Click your finger on the screen to scroll up and down.
- Flick your finger slightly on the screen to reveal the zoom control. Touch the plus or minus side of the zoom control to zoom in or out.
- To find text on a webpage. Press the **Menu** key and then touch **More > Find on page**. Enter the text you are looking for. As you type, the first word with matching characters is highlighted on the screen, and subsequent matches are boxed. Touch the left arrowhead or right arrowhead to jump to and highlight the previous or next matching word.

### 4.1.3 To navigate among webpages

You can open links on a webpage, navigate back and forth, and review your browsing history, just as in any web browser. You can also take advantage of some shortcuts for working with links and other kinds of information. The following tips help you to navigate among webpages.

- Touch a link to open it. Links that you touch are highlighted until the webpage they refer to opens in the window.
- To go back and forward among the pages you have opened, press the **Back** key or press the **Menu** key and touch **More > Forward**.
- As you browse the web, **Browser** keeps track of the pages you visit, to help you find your way back later. You can touch the bookmark button to the right of the address bar and touch the **History** tab, or press and hold the **Back** key when viewing a webpage to open the **History** tab. The pages you have visited are grouped chronologically. Touch a time period to view the pages you have visited. Touch a page in the history tab to reopen it.
- To view your most frequently visited pages, touch the bookmark button to the right of the address bar and touch the **Most visited** tab. The pages you have visited most frequently are listed in order. Touch a page to open it.

- Browser recognizes links, as well as some phone numbers, addresses, and similar information that you may want to act on directly. To follow shortcuts for links, phone numbers, and addresses, touch and hold a link to open a menu with shortcuts for opening, adding to the bookmark, saving, and sending the link via email. Touch a phone number to open the **Phone** application with the number entered.
- You can open up to eight **Browser** windows at a time and switch among them. To open a new **Browser** window, press the **Menu** key and touch **New window**. Or press the **Menu** key and touch **Windows**. In the screen that opens, touch **New window**. New windows open with your home page.
- To switch **Browser** windows, press the **Menu** key and touch **Windows**. Your open windows are displayed. Touch a window to open it.
- To close a **Browser** window. Press the **Menu** key and touch **Windows**. All open windows are displayed in a scrolling list of thumbnails. Touch the close box on the window to close it.

## 4.2 Working with the bookmarks

You can add webpages to the bookmarks list so that you can quickly return to them.

### 4.2.1 To add a webpage to the bookmarks list

1. Open a webpage to add to the bookmarks list.
2. Touch the bookmark button to the right of the address bar. Or press the **Menu** key and touch **Bookmarks**.
3. Touch **Add** at the top of the **Bookmarks** screen.
4. Edit the name and the address if necessary and touch **OK**. The bookmark is added to the top of your bookmarks list.

#### 4.2.2 To open the bookmarks list

Touch the bookmark button to the right of the address bar of the browser screen. Or press the **Menu** key and touch **Bookmarks**.

#### 4.2.3 To open a bookmark

In the bookmarks list, touch a bookmark to open it. The bookmark opens in the current window. If you prefer to open it in a new window, touch and hold the bookmark and touch **Open in new window** in the menu that opens.

#### 4.2.4 To edit a bookmark

1. In the bookmarks list, touch and hold the bookmark to edit.
2. Touch **Edit bookmark** in the menu that opens.
3. Edit the name or address in the dialog that opens and touch **OK**.

#### 4.2.5 To share a bookmark

1. In the bookmarks list, touch and hold the bookmark to share.
2. Touch **Share link** in the menu.
3. Touch the application you want to use to send the bookmark. The application opens with the bookmark address.

#### 4.2.6 To delete a bookmark

1. In the bookmarks list, touch and hold a bookmark to delete it.
2. Touch **Delete bookmark** in the menu, and touch **OK**.

### 4.3 Downloading files

You can download files, webpages, and even applications from webpages. The files that you download are stored on your Tablet.

### 4.3.1 To download and install only trusted applications

You can download and install applications from the web or receive with an email message. Applications downloaded from the web can be from unknown sources. To protect your Tablet and personal data, and download applications only from trusted sources, open the settings list and touch **Applications > Unknown sources > OK** to make it unchecked.

### 4.3.2 To download a file

You can touch and hold an image and touch **Save image** in the menu that opens to download the image file. Or touch and hold a link to a file or to another webpage, and touch **Save link** in the menu that opens to download the linked file.

## 5 Email

### 5.1 Opening Email

Touch **Email** on the Home screen or on the Applications screen to open **Email**.

### 5.2 Adding and deleting email accounts

#### 5.2.1 To add an Email account

The first time you open **Email**, you are prompted to set up an Email account. Or if you have created an Email account, you can press the **Menu** key, and then touch **Add account** to create another Email account. Do as the following steps to add your Email account in the **Set up email** screen.

1. Enter your Email address and password.
2. Touch **Next** or **Manual setup** to select your Email service type and enter other Email account details. You can contact your Email service provider for the values required for your account.

3. Enter a name for the account, and the name you want displayed in outgoing mail, and touch **Done**. Email starts downloading your Email messages and you can send and receive Email messages with this new account.

### 5.2.2 To delete an email account

1. Open the **Email** screen, press the **Menu** key and touch **Accounts**.
2. Touch and hold the account to delete.
3. Touch **Remove account** in the menu that opens.
4. Touch **OK** in the dialog to confirm your delete action.

## 5.3 Sending and responding to email messages

### 5.3.1 To compose and send email messages

1. Open **Email**, touch the email account you want to use.
2. Press the **Menu** key and then touch **Compose** in the menu that opens.
3. Enter the name or email address of the desired recipient or recipients in the **To** field. As you enter, matching addresses are offered from your **Contacts**. You can touch a suggested address or enter a new one. Separate multiple addresses with commas.
4. Enter a subject for the email message.
5. Enter the text of the email message.
6. Press the **Menu** key and touch **Attach** to send a photo with the message.
7. Touch **Send**.



If you are not ready to send the message, you can touch **Discard** to abandon the message, or touch **Save as draft** to save it in a drafts folder. Your message is also saved as a draft if you press the **Back** key before sending it.

### 5.3.2 To receive email messages

To receive email messages, press the **Menu** key and touch **Refresh** after you log into the email box. You can also touch **Account settings > Email check frequency** to set the frequency for automatically checking new email messages.

### 5.3.3 To read an email message

To read an email message, you can open the **Email** screen, touch to select an account inbox, then touch the message to read.

### 5.3.4 To reply to or forward an email message


While reading an email message, you can touch **Reply** or **Reply all** to reply to the message. A Compose Message window opens with the addresses, subject, and a copy of the message you are responding to filled in. You can also press the **Menu** key and touch **Reply**, **Reply all**, or **Forward** to reply to or forward the message.

### 5.3.5 To delete an email message

You can delete an email message from its folder by touching **Delete** or by pressing the **Menu** key and touching **Delete** when you are reading it. For most kinds of accounts, deleted messages are moved to a trash folder, so you can retrieve them if you deleted them in error.

## 6 Calls

### 6.1 Making calls by dialing




1. To display the phone panel, you can touch  on the home screen or **Phone** on the Applications screen. Or if you have the **Call log**, **Contacts** or **Favorites** tab open, you can touch to switch to the **Phone** tab.
2. Touch the digital keys to enter the phone number. To dial an international number, touch and hold the 0 key to enter the plus ( + ) symbol. Then enter the international

 key on the screen to erase subsequent digits of the number one by one. Touch and hold it to erase the entire number.

3. Touch  on the screen.

## 6.2 Answering, rejecting or ending calls

When you receive phone calls, the **Incoming call** screen opens.

- To silence the ringer before answering calls, press the **Volume Down** key.
- Drag  from left to right to answer the call.
- Drag  from right to left to reject the incoming calls or press the **Menu** key and touch  to end answered ongoing calls.


## 6.3 Working with the Call log

The **Call log** tab lists entries of all dialed calls, answered calls, and missed calls. All received calls are recorded in the **Call log**. If you miss a call, you receive a notification.

Touch an entry in the **Call log** to open a screen that gives you options on what you can do with the contact. Or touch and hold an entry to open the context menu.


### 6.3.1 To open the Call log

To open the **Call log**, you can touch **Call log** on the Applications screen. You can also touch the **Call log** when you have the **Phone**, **Contacts** or **Favorites** tab open.

 Calls are listed with the most recent at the top. Flick up and down to view all entries in the log.

### 6.3.2 To make calls from the Call log

1. Touch the entry of your target contact in the **Call log**.

2. Touch  to dial the number of the contact.


### 6.3.3 To add numbers to the Contacts

1. Touch and hold the target entry in the **Call log** to display the context menu.
2. Touch **Add to Contacts**.

### 6.3.4 To clear the Call log

While viewing the **Call log**, press the **Menu** key, and touch **Clear call log**. You can also touch and hold an entry in the log to display the context menu, then touch **Remove from call log** to remove just that entry from the Call log.

## 6.4 Calling listed contacts


1. You can open the **Contacts** on the Home screen or on the Applications screen by touching **Contacts**. You can also touch to switch to the **Contacts** tab if you have the **Phone**, **Call log** or **Favorites** tab open.
2. Touch the contact to call. You can flick up and down to find a contact that listed in **Contacts**.
3. Touch  to dial the number of the contact.



4. Touch a contact to open the contact details screen. Touch and hold a contact to open the context menu.

## 6.5 Calling favorite contacts

The favorite contacts list is followed by a list of the numbers that you call most often. You can add and remove favorites by touching the star next to the contact names, while you are viewing information about the contacts. To call a favorite contact, do as follows.

1. Open **Phone**, **Call log**, or **Contacts**, then touch the **Favorites** tab to display the favorite contacts list.
2. Touch a favorite contact to call.
3. Touch a number of the contact to call.
4. Touch  to dial the number of the contact.

## 7 Messaging

Use **Messaging** to exchange text messages (SMS) and multimedia messages (MMS) with your friends.

### 7.1 Opening Messaging

Touch **Messaging** on the Applications screen to open the **Messaging** screen. The **Messaging** window opens, where you can create a new message or open an ongoing message thread.

### 7.2 Exchanging messages

You can send text messages (SMS) and Multimedia messages (MMS) to other mobile devices with this feature and service. **Messaging** automatically converts a message into a multimedia message if you send it to an email address instead of a phone number, add a subject, or attach a media file.

#### 7.2.1 To create and send a text message

1. On the **Messaging** screen, touch **New message**.
2. Enter the name of a contact with a mobile number in the **To** field. As you enter, matching contacts appear. You can touch a suggested contact or continue your entering.

3. Touch the composition text field to enter your message text. If you press the **Back** key while composing a message, it is saved as a draft in your **Messaging** window. Touch the message to resume composing it.
4. Touch **Send**.

### 7.2.2 To create and send a multimedia message

1. On the **Messaging** screen, touch **New message**.
2. Enter a mobile phone number, or the name of a contact with a mobile number in the **To** field. As you type, matching contacts appear. You can touch a suggested contact or continue your entering.
3. Touch the composition text field to enter your message text.
4. Press the **Menu** key and touch **Add subject** to add a message subject.
5. Press the **Menu** key and touch **Attach** to open a menu where you can touch the kind of media file and add an attachment to the message. Use the buttons in the Compose Message screen to preview or remove the media attachment.
6. Touch **Send**.

### 7.2.3 To view and respond to a message

If you are working in the **Messaging** window, messages that you receive are displayed in it. Otherwise, you receive a new message notification and a new message icon appears in the notification list.

When you touch the new message notification, the **Messaging** window opens, where you can reply to the message. If **Auto-retrieve** is unchecked, you must touch **Download** to view the multimedia message (MMS).

If the message contains a media file, touch  to view, watch, or listen to it. Touch and hold the media file to open a menu with an option for saving the message on your Tablet.

### 7.2.4 To view details about a message

Touch and hold a message in a message thread, and then touch **View message details** in the menu that opens.

### 7.2.5 To forward or delete a message

1. Touch and hold the message thread to forward or to delete.
2. Touch **Delete message** or **Forward** in the menu that opens.

## 8 Contacts

**Contacts** enables you to save and manage information such as phone numbers, email addresses and chat addresses of your contacts, and provides quick and easy access to communicate with the people you want.

### 8.1 Opening Contacts

You can open your contacts by touching **Contacts** on the Home screen or on the Applications screen. Or if you have **Phone**, **Call log** or **Favorites** tab open, touch the **Contacts** tab. You can touch the **Favorites** tab to open your favorite contacts. In the contact tab pages, you can touch a contact to open the contact details screen, or touch and hold a contact to open the context menu.

### 8.2 Creating a contact

1. Open the **Contacts** screen.
2. Press the **Menu** key and touch **New contact**.
3. Enter the information of the contact, refer to the following tips.
  - Enter the contact name, and touch the picture frame to select a picture to display next to the name in the contacts list and in other applications.

- Touch a category of contact information, such as phone numbers and email addresses, to enter that kind of information about your contact. Flick up and down to view all categories.
  - Touch the plus button to the right of a category to add more than one entry for that category. Touch the minus button to the right of an entry to remove the entry.
  - Touch the label button to the left of the items of contact information such as **Phone** and **Email** to open a menu with preset labels for a phone number. You can touch to select a preset label or touch **Custom** in the menu to create your own label.
4. When your entering is finished, flick the page to the bottom and touch **Save contact**. You can also press the Menu key and touch **Done** in the menu that opens to save the contact details to your Tablet.

## 8.3 Searching for contacts

1. Open the **Contacts** screen.
2. Press the **Menu** key and touch **Search**.
3. Enter the name of the contact you are searching for. As you type, contacts with matching names appear below the search box.
4. Touch a matching contact in the list to open its Details screen. Touch the searching glass to open a screen with a list of matching contacts.

## 8.4 Editing contacts

### 8.4.1 To edit contact details

To change or add details for your contacts, do as follows.

1. Open **Contacts** or **Favorites**.
2. Touch and hold the contact whose details you want to edit, and touch **Edit contact** in the menu that opens. You can also press the **Menu** key and touch **Edit contact** while viewing details of the contact.

3. Edit the contact information, using the same controls as when you create a contact.

#### 8.4.2 To set default phone number

A default phone number appears below the name of the contact in the **Contacts** list, and this number can be used when you initiate a call or send a text message from the list by touching and holding a contact. To set one of the phone numbers of a contact as the default phone number, do as follows.

1. Open **Contacts** or **Favorites**.
2. Touch the contact entry in the list to view the details.
3. Touch and hold the phone number to use as the default phone number.
4. Touch **Make default number** in the menu that opens. The default phone number is marked with a checkmark.

#### 8.4.3 To delete a contact

1. Open **Contacts** or **Favorites**.
2. Touch and hold the contact to delete, and touch **Delete contact** in the menu that opens to delete the contact from your Tablet. You can also press the **Menu** key and touch **Delete contact** while viewing details of the contact.
3. Touch **OK** to confirm that you want to delete the contact.

#### 8.4.4 To set contact group to display

To set the contact group to display, do as follows:

1. Open **Contacts**.
2. Press the **Menu** key and touch **Display options**.
3. Touch **Only contacts with phones** to make it checked or unchecked to display only contacts with phones or display all the contacts.
4. Touch **Done** to confirm that you want to display the contact group.

## 8.5 Editing favorite contacts

### 8.5.1 To add a contact to favorites

1. Open **Contacts**.
2. Touch and hold a contact to open the contexts menu, and touch **Add to favorites**.  
You can also touch the gray star to the right of the contact name while viewing details of the contact. The star turns to golden and the contact is added to your favorites.

### 8.5.2 To remove a contact from favorites

On the **Favorites** tab, touch and hold the contact, and touch **Remove from favorites** in the menu that opens to remove the contact from the tab.

You can also touch the golden star to the right of the contact name while viewing details of the contact. The star turns to gray and the contact is removed from your favorites.

## 9 Multimedia applications

### 9.1 Sound Recorder

Touch **Sound Recorder** on the Applications screen to open the **Record your message** screen and the following tips are helpful for you to ease working with it.

- Touch the round button to start to record your message.
- Touch the triangle button to play back the recording.
- Touch the square button to stop recording or playing.
- View the recording or playing duration and the volume of the captured audio signals on the **Record your message** screen.

## 9.2 Camera and Camcorder

Touch **Camera** or **Camcorder** on the Home screen or on the Applications screen to open the camera or camcorder to take pictures or shoot videos.



Be sure to clean the protective lens cover with a microfiber cloth before taking pictures and shooting videos. A lens cover with smudges from fingers can cause blurry pictures with a “halo” effect.

## 9.3 Music

Touch **Music** on the Home screen or on the Applications screen to open the music player and display the music library that organized by **Artists**, **Albums**, **Songs**, **Playlists**, or **Now playing**. You can select what you want to play.



When a song is playing, you can add it to a playlist by pressing the **Menu** key and touching **Add to playlist**.

You can return to the main Library screen from most other screens in the **Music** application by pressing the **Menu** key and touching **Library**.

## 9.4 Videos

On the Applications screen, touch **Videos** to open the **Videos** screen and display the video files. On the **Videos** screen, touch a file to play the video.

## 9.5 Gallery

**Gallery** can automatically search for the pictures and videos stored on your Tablet and microSD card. In addition, **Gallery** sorts these pictures and videos in folders. You can use **Gallery** to view and edit pictures, set a picture as the wallpaper or a contact image, and watch the videos stored on your Tablet and microSD card.

### 9.5.1 Opening Gallery

Touch **Gallery** on the Applications screen to open it.

**Gallery** categorizes your pictures and videos by location and stores these files in folders. You can touch one of the folders to view pictures or videos.



If you have a great many pictures or videos on your Tablet or microSD card, it may take a few minutes to discover and organize them when you open the **Gallery**.

### 9.5.2 Viewing a Picture

1. Touch a folder to view the pictures contained in the folder.
2. Touch a picture to view it in full-screen mode. When viewing a picture in full screen, flick left or right across the screen to view the previous or next picture.
3. Touch the screen to display the zoom control appears, and then you can zoom in or zoom out the picture.

### 9.5.3 Sharing a Picture

When you are viewing a picture, press the **Menu** key, and then touch **Share** and touch the application you want to use to share a picture with your friends.

### 9.5.4 Rotating a Picture

1. Press the **Menu** key, and then touch **More**.
2. Touch **Rotate left** or **Rotate right**.

### 9.5.5 Cropping a picture

1. Touch a picture to view the controls and press the **Menu** key, and then touch **More**.
2. Touch **Crop**, the cropping rectangle appears on top of the picture.
3. Use the cropping tool to select the portion of the picture to crop.
  - Drag from the inside of the cropping tool to move it.
  - Drag an edge of the cropping tool to resize it to any proportion.

- Drag a corner of the cropping tool to resize it with fixed proportions.
4. Touch **Save** to save a copy of the picture that you cropped. The original uncropped version remains on your Tablet or microSD card.

### 9.5.6 Playing a Video

Touch the video you want to watch in **Gallery** to start playing the video. Touch the screen to show the play control panel. And then you can rewind the video, pause or resume playing the video, fast forward the video or jump to any part of the video.

## 10 Handy applications

### 10.1 Calendar

You can use the **Calendar** to create and manage events such as meetings and appointments. Touch **Calendar** on the Applications screen to open it. The events about the current day and the day after current day are shown on the event widget on the Home screen.

### 10.2 Alarm Clock

You can touch **Clock** on the Home screen or on the Applications screen to open a screen where you can set the alarm time and other attributes.

You can set an alarm by modifying an existing alarm or by adding a new one. Touch an existing alarm to set its time and other attributes. Or press the **Menu** key and touch **Add alarm** to add a new one.

Touch to make the check box to the right of an alarm checked or unchecked to turn the alarm on or off.

Touch and hold an alarm to delete it.

## 10.3 Calculator

Touch **Calculator** on the Home screen or on the Applications screen to open the calculator to solve math problems. You can drag to switch between basic and advanced panels, or press the **Menu** key and touch **Advanced panel**.

## 10.4 Documents

Touch **Documents To Go** on the Applications screen to view documents with the format such as Word, Excel, PowerPoint and PDF.

## 10.5 File Manager

### 10.5.1 Creating a Folder

1. Touch **File Manager** on the Applications screen.
2. Press the **Menu** key on the **File Manager** screen, and then touch **New folder**.
3. Enter the new folder name in the text box.
4. Touch **Save** to confirm that you want to create the folder.

### 10.5.2 Deleting files and folders

You can delete a file or a folder by touching and holding it and touch **Delete** in the menu that opens. You can also delete files and folders referring to the following steps.

1. Press the **Menu** key on the **File Manager** screen.
2. Touch **Delete**, and touch files or folders you want to delete to make them checked.
3. Press the **Menu** key, and touch **Done**.
4. Touch **OK** on the dialog that opens to confirm your want to delete the files or folders.

### 10.5.3 Searching a File

1. Press the **Menu** key on the **File Manager** screen, and then touch **Search**.

1. Enter the name or keyword of the name of the target file or folder in the search text box.
3. Touch **Search**. Your Tablet starts to search for the file or folder in all folders and subfolders.
4. The search result is shown in a list. Touch to open your target file or folder.

## 11 Security settings

### 11.1 Enabling the SIM card PIN

1. Open the **Settings** list.
2. Touch **Location & security > Set up SIM/USIM card lock**.
3. Touch **Lock SIM/USIM card**, and enter the default SIM card PIN using the onscreen keyboard.
4. Touch **OK**.



Emergency calls can be placed at any time, without entering a PIN.

### 11.2 Changing the SIM card PIN

1. Open the **Settings** list.
2. Touch **Location & security > Set up SIM/USIM card lock**.
3. Touch **Change SIM/USIM PIN**, and enter the old SIM card PIN using the onscreen keyboard.
4. Enter the new SIM card PIN, and then touch **OK**.

## 12 Personal Information and Data Security

The use of some functions or third-party applications on your device could result in your personal information and data being lost or becoming accessible to others. Several measures are recommended to help you protect personal and confidential information.

- Place your device in a safe area to prevent it from unauthorized use.
- Set your device screen to lock and create a password or unlock pattern to open it.
- Periodically back up personal information kept on your SIM/UIM card, memory card, or stored in your device memory. If you change to a different device, be sure to move or delete any personal information on your old device.
- If you are worried about viruses when you receive messages or emails from a stranger, you can delete them without opening them.
- If you use your device to browse the Internet, avoid websites that might pose a security risk to avoid theft of your personal information.
- If you use services such as Wi-Fi tether or Bluetooth, set passwords for these services to prevent unauthorized access. When these services are not in use, turn them off.
- Install or upgrade device security software and regularly scan for viruses.
- Be sure to obtain third-party applications from a legitimate source. Downloaded third-party applications should be scanned for viruses.
- Install security software or patches released by Huawei or third-party application providers.
- Some applications require and transmit location information. As a result, a third-party may be able to share your location information.
- Your device may provide detection and diagnostic information to third-party application providers. Third party vendors use this information to improve their products and services.
- If you have concerns about the security of your personal information and data, please contact [mobile@huawei.com](mailto:mobile@huawei.com).

## 13 Legal Notice

**Copyright © Huawei Technologies Co., Ltd. 2011. All rights reserved.**

No part of this document may be reproduced or transmitted in any form or by any means without prior written consent of Huawei Technologies Co., Ltd.

The product described in this manual may include copyrighted software of Huawei Technologies Co., Ltd. and possible licensors. Customers shall not in any manner reproduce, distribute, modify, decompile, disassemble, decrypt, extract, reverse engineer, lease, assign, or sublicense the said software, unless such restrictions are prohibited by applicable laws or such actions are approved by respective copyright holders.

### Trademarks and Permissions



**HUAWEI**, **HUAWEI**, and  
Technologies Co., Ltd.



are trademarks or registered trademarks of Huawei



**SRS** is a trademark of SRS Labs, Inc. TruMedia technology is incorporated under license from SRS Labs, Inc..

SRS TruMedia™, a feature-rich audio solutions tuned specifically for mobile devices, provides a cinema-like surround headphone performance with deep, rich bass.

HDMI, the HDMI Logo, and High-Definition Multimedia Interface are trademarks or registered trademarks of HDMI Licensing LLC in the United States and other countries.

Other trademarks, product, service and company names mentioned are the property of their respective owners.

### Notice

Some features of the product and its accessories described herein rely on the software installed, capacities and settings of local network, and therefore may not be activated or may

be limited by local network operators or network service providers. Thus the descriptions herein may not match exactly the product or its accessories you purchase.

Huawei Technologies Co., Ltd. reserves the right to change or modify any information or specifications contained in this manual without prior notice and without any liability.

### **Third-Party Software Statement**

Huawei Technologies Co., Ltd. does not own the intellectual property of the third-party software and applications that are delivered with this product. Therefore, Huawei Technologies Co., Ltd. will not provide any warranty of any kind for these third-party software and applications. Neither will Huawei Technologies Co., Ltd. provide support to customers who use these third-party software and applications, nor be responsible or liable for the functions of these third-party software and applications.

Third-party software and applications services may be interrupted or terminated at any time. Huawei Technologies Co., Ltd. does not guarantee that any content or service would be maintained for any period during its availability. Third-party service providers provide content and services through network or transmission tools outside of the control of Huawei Technologies Co., Ltd. To the greatest extent permitted by applicable law, it is explicitly stated that Huawei Technologies Co., Ltd. shall not compensate or be liable for services provided by third-party service providers, or the interruption or termination of third-party contents or services.

Huawei Technologies Co., Ltd. shall not be responsible for the legality, quality, or any other aspects of any software installed on this product, or for any uploaded or downloaded third-party works, such as texts, images, videos, or software. Customers shall bear the risk for any and all effects, including incompatibility between the software and this product, which result from installing software or uploading or downloading the third-party works.

This product uses the open-sourced Android operating system. Huawei Technologies Co., Ltd. has made necessary changes to the system. Therefore, this product may not support all the functions that are supported by the standard Android operating system or may be incompatible with third-party software. Huawei Technologies Co., Ltd. shall not be liable for any of such situation.

## **DISCLAIMER OF WARRANTIES**

THE CONTENTS OF THIS MANUAL ARE PROVIDED “AS IS”. EXCEPT AS REQUIRED BY APPLICABLE LAWS, NO WARRANTIES OF ANY KIND, EITHER EXPRESS OR IMPLIED, INCLUDING BUT NOT LIMITED TO, THE IMPLIED WARRANTIES OF MERCHANTABILITY AND FITNESS FOR A PARTICULAR PURPOSE, ARE MADE IN RELATION TO THE ACCURACY, RELIABILITY OR CONTENTS OF THIS MANUAL.

## **LIMITATIONS OF LIABILITY**

TO THE MAXIMUM EXTENT PERMITTED BY APPLICABLE LAW, IN NO EVENT SHALL HUAWEI TECHNOLOGIES CO., LTD. BE LIABLE FOR ANY SPECIAL, INCIDENTAL, INDIRECT, OR CONSEQUENTIAL DAMAGES, OR LOST PROFITS, BUSINESS, REVENUE, DATA, GOODWILL OR ANTICIPATED SAVINGS.

THE MAXIMUM LIABILITY (THIS LIMITATION SHALL NOT APPLY TO LIABILITY FOR PERSONAL INJURY TO THE EXTENT APPLICABLE LAW PROHIBITS SUCH A LIMITATION) OF HUAWEI TECHNOLOGIES CO., LTD. ARISING FROM THE USE OF THE PRODUCT DESCRIBED IN THIS DOCUMENT SHALL BE LIMITED TO THE AMOUNT PAID BY CUSTOMERS FOR THE PURCHASE OF THIS PRODUCT.

## **Import and Export Regulations**

Customers shall comply with all applicable export or import laws and regulations and be responsible to obtain all necessary governmental permits and licenses in order to export, re-export or import the product mentioned in this manual including the software and technical data therein.

Issue: 01 (2011–05–27)

Part Number: 903078



for Android™ Android is a trademark of Google Inc. Use of this trademark is subject to Google Permissions.