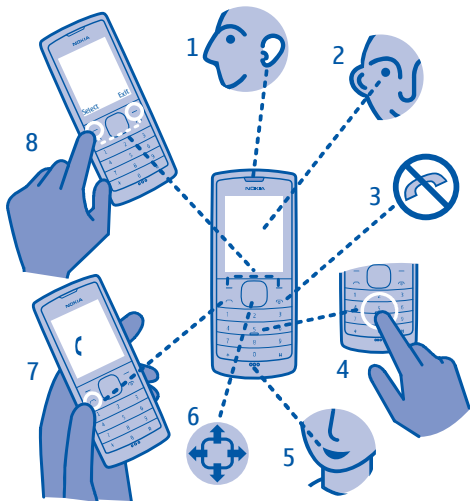
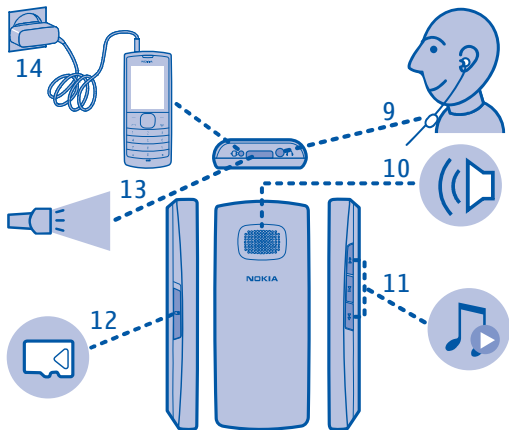

Nokia X1-00 User Guide

Keys and parts



- 1 Earpiece
- 2 Screen
- 3 End/Power key
- 4 Keypad

- 5 Microphone
- 6 Scroll key
- 7 Call key
- 8 Selection keys



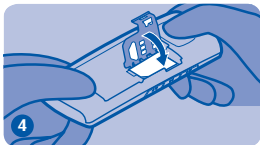
- 9 Headset connector
- 10 Loudspeaker
- 11 Music keys
- 12 Memory card slot
- 13 Flashlight
- 14 Charger connector

The headset and memory card may be available separately.

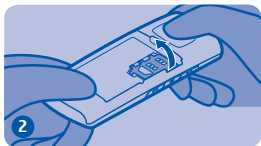
Insert the SIM card and battery



Put your finger in the gap, and lift the back cover.



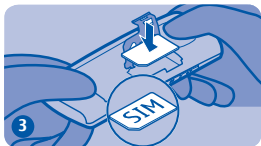
Close the SIM card holder.



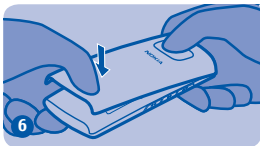
Open the SIM card holder.



Line up the battery contacts and push the battery in.

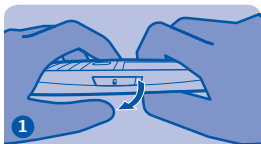


Insert the SIM card



Press the back cover into place.

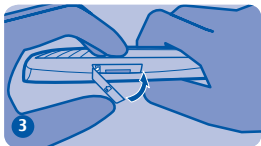
Insert a memory card



Open the cover of the memory card slot. See v) in General Information.

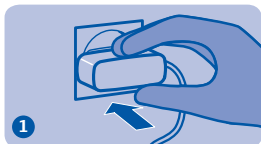


Make sure the contact area is facing up, and push the card in.

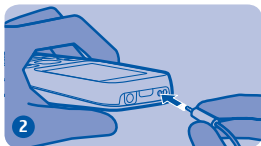


Close the cover.

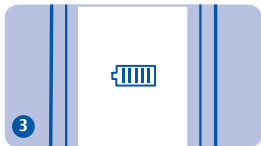
Charge the battery



Connect the charger to a wall outlet.



Connect the charger to the phone.



The phone indicates a full charge. You can use the phone while charging.

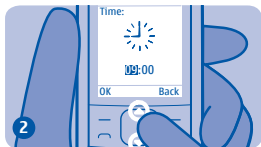
Switch on



Press and hold the power key .



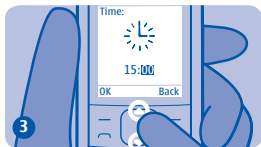
The time is changed.



To set the hour, press up or down. You can also press the number keys.



To set the date, press up or down. Press **OK**.

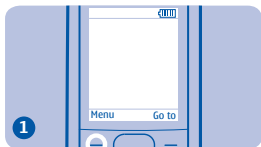


To set the minutes, press right, and then press up or down. Press **OK**.



The phone is ready to use.

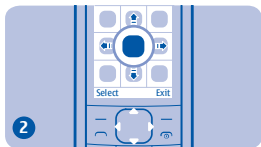
Explore your phone



To see the available functions, press **Menu**.



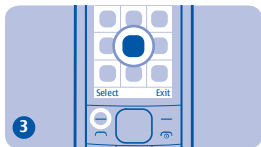
To select an item, press **Select**.



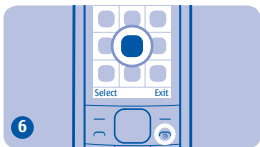
To go to a function, press the scroll key up, down, left, or right.



To return to the previous view, press **Back**.

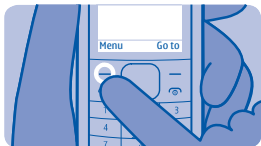


To select the function, press **Select**.



To return to the home screen, press **Home**.

Lock or unlock keypad



To avoid accidental pressing of keys, use the keypad lock.



Press **Menu**, and then quickly press *****.

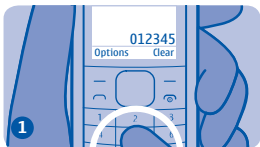


The keypad locks. To unlock the keypad, repeat step 1.

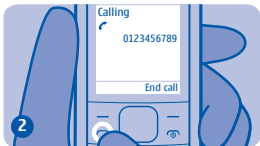
Make or answer a call



Make a call to a number that you have.



Enter the phone number.



Press .

Change the volume




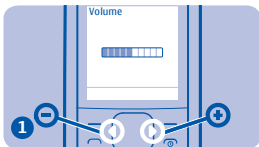
A friend's phone rings. To answer, press .



Is the volume too loud during a call or when listening to the radio?



You can enjoy chatting with your friend. To end the call, press .



Press left for quieter, right for louder.



Better.

Use the loudspeaker

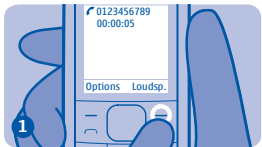


Others in the room can join in with a call.

Use the headset



You can make a hands-free call with a headset.



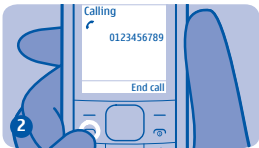
During a call, press **Loudsp..**



Connect a headset.

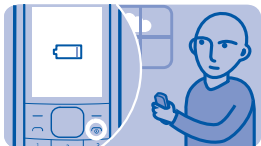


Place the phone on a table.



Make a call.

Switch off



To save battery power, switch the phone off.

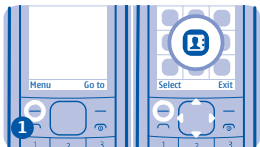
Save a name and number



Add a friend's number to your phone.



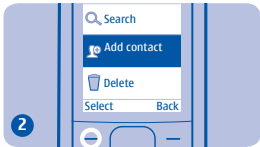
Press and hold the power key .



Press **Menu**. Select **Contacts**.



The phone switches off.



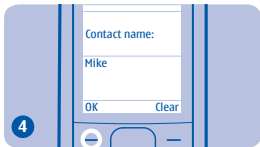
Select **Add contact**.



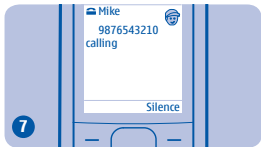
Write the name.



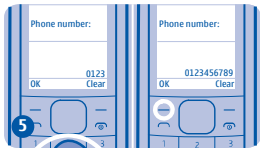
Go to a picture, and press **Use**.



Press **OK**.



When you receive a call, the name, number, and picture are shown.

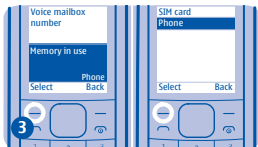


Enter the phone number. Press **OK**.

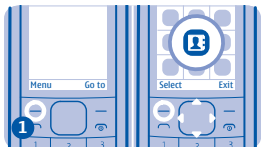
Save numbers in five separate phonebooks



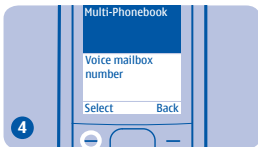
To use separate phonebooks, save contacts in the phone memory.



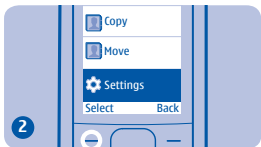
To use the phone memory, select **Memory in use > Phone**.



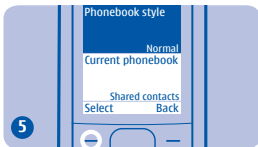
Press **Menu**. Select **Contacts**.



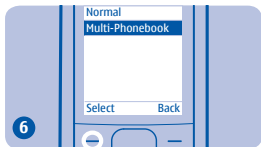
Select **Multi-Phonebook**.



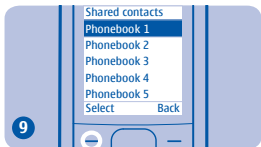
Select **Settings**.



Select **Phonebook style**.



Select **Multi-Phonebook**.



Select a phonebook.



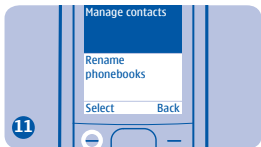
Multi-Phonebook is ready to use.



The phonebook is set as the current phonebook.



Select **Current phonebook**.



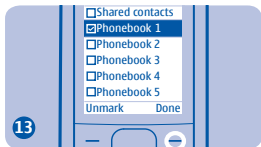
To add a contact, select **Manage contacts**.



Select a contact.



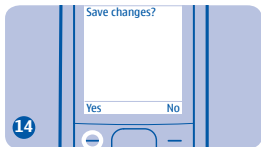
Select **Rename phonebooks** and a phonebook.



Mark a phonebook, and press **Done**.



Write the name, and press **OK**. The phonebook name is changed.

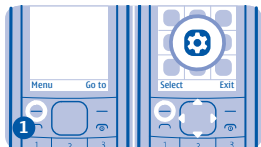


Save the changes. To save more contacts, repeat steps 12–14.

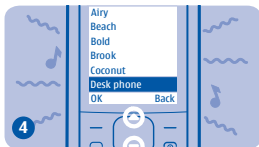


To see the phonebook quickly, press , and then press down.

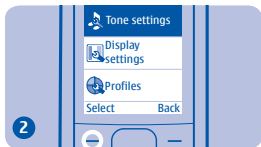
Change the ringtone



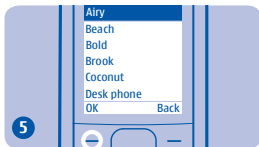
Press **Menu**. Select **Settings**.



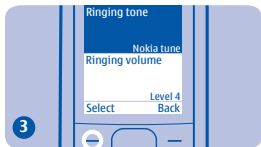
To listen to the sound of a ringtone, go to the ringtone.



Select **Tone settings**.



Press **OK**.

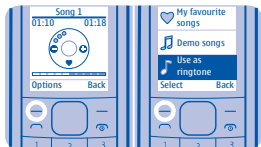


Select **Ringing tone**.



The ringtone is selected.

Flashlight



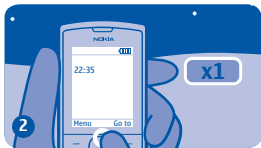
Tip: You can select an MP3 song as a ringtone.



Use the flashlight if you need more light. See iii) in General Information.

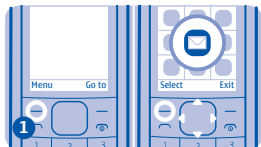


To use the flashlight, press up twice.

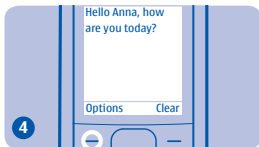


To switch the flashlight off, press up once.

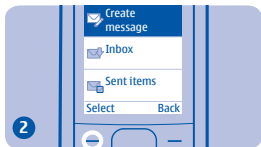
Send and receive messages



Press **Menu**. Select **Messages**.



Press **Options**, and select **Send**. See i) in General Information.



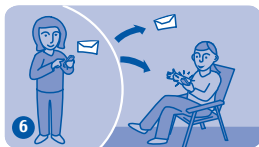
Select **Create message**.



Enter a phone number. Press **OK**.



To write your message, press the keys.

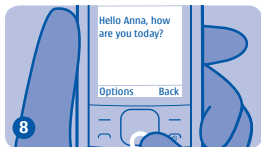


The message is sent.

Write text



To read a message, press **Show**.



To view the rest of the message, press down.

Press a key repeatedly until the letter is shown.

Change the writing language: select **Menu > Settings > Phone settings > Language**, the language, and **OK**. See iv) in General Information.

Insert a space: press **0**.

Change a word: press ***** repeatedly until the word is shown.

Insert a number: press and hold the number key.

Insert a special character: press and hold *****.

Change the text input method: press **#** repeatedly.

Use predictive text: select **Options > Dictionary** and the language. Press a key for each letter. When the word is shown, press **0**. Start writing the next word.

Stop using predictive text: select **Options > Dictionary > Dictionary off**.

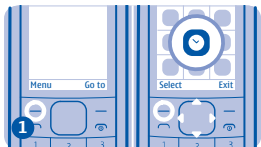
Set an alarm



Use your phone as an alarm clock to wake you up.



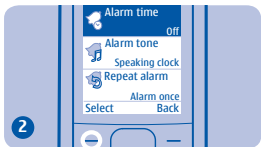
To set the hour, press up or down.



Press **Menu**. Select **Clock**.



To set the minutes, press right and then up or down.

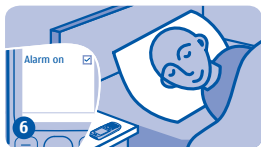


Select **Alarm time**.



Press **OK**.

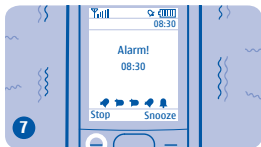
Set a reminder



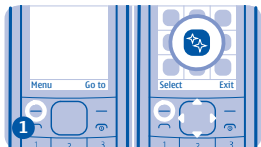
The alarm is ready.



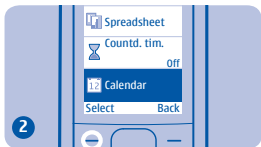
Set a reminder to meet your friends.



An alarm sounds at the set time. Press **Stop**.



Press **Menu**. Select **Extras**.



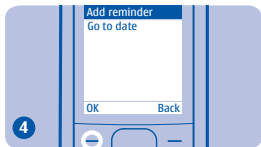
Select **Calendar**.



Go to the date, and press **Options**.



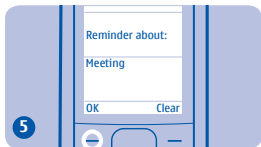
To set an alarm, select **Alarm on**.



Select **Add reminder**.



To set the hour and minutes, press up or down.



Write a name for the reminder.

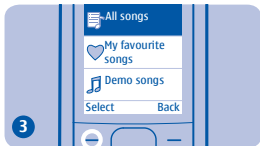


Press **OK**. The alarm is ready.

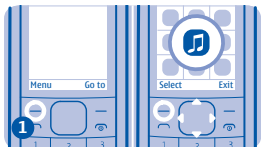
Listen to music



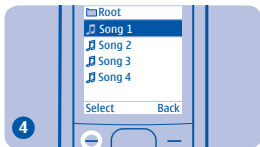
Enjoy your music on the go. Make sure a memory card is in your phone.



Press **Options**. Select **All songs**.



Press **Menu**. Select **Music**.



Select a song.

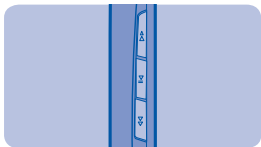


Select **Mp3 Music player**.



Press **Options**. Select **Play**.

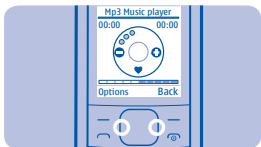
Listen to the radio



Tip: To go to the previous or next song, press ◀ or ▶. To pause, press ⏸.



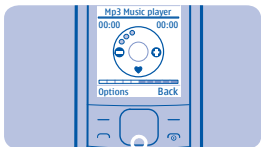
Use your phone to listen to the radio. See ii) in General Information.



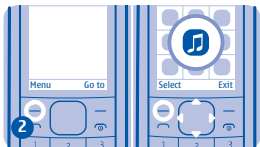
Tip: Press left for quieter and right for louder.



Connect a headset. The headset cable works as the radio antenna.



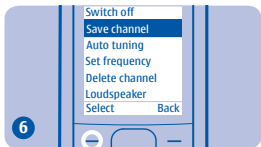
Tip: Press down to add songs to the My favourite songs playlist.



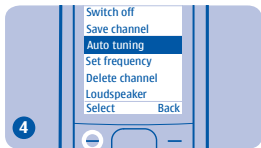
Press **Menu**. Select **Music**.



3 Select **Radio**. The radio is on.



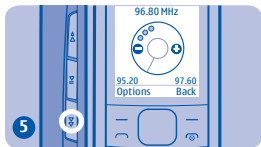
6 To save the channel, press **Options**, and select **Save channel**.



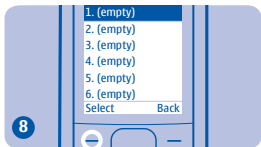
4 To automatically find radio channels, press **OK**.



7 Write a name for the channel, and press **OK**.

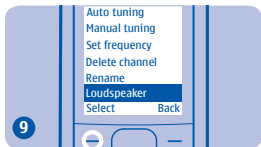


5 To select the next channel, press **▶▶**.



8 Select an empty channel. To save more channels, repeat steps 5–7.

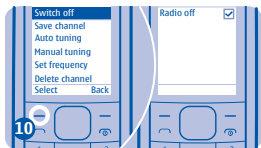
Calculator



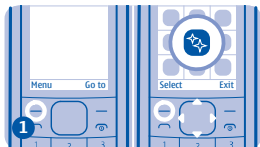
To use the loudspeaker, press **Options**, and select **Loudspeaker**.



Use your phone to make a calculation.



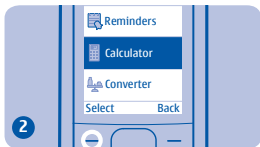
To close the radio, press **Options**, and select **Switch off**.



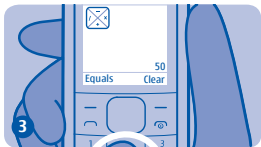
Press **Menu**. Select **Extras**.



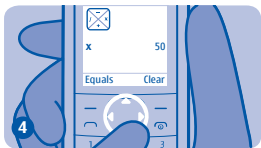
Tip: Wake up to the radio. Press **Options**, and select **Clock radio**.



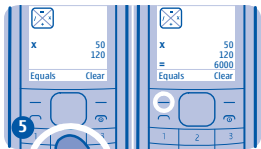
Select **Calculator**.



To enter numbers, press the keys.



To change a function, use the scroll key.



Enter the second number, and press **Equals**.

General information

Read these simple guidelines. Not following them may be dangerous or illegal. Read the complete user guide for further information.



SWITCH OFF IN RESTRICTED AREAS

Switch the device off when mobile phone use is not allowed or when it may cause interference or danger, for example, in aircraft, near medical equipment, fuel, chemicals, or blasting areas.



ROAD SAFETY COMES FIRST

Obey all local laws. Always keep your hands free to operate the vehicle while driving. Your first consideration while driving should be road safety.



INTERFERENCE

All wireless devices may be susceptible to interference, which could affect performance.



QUALIFIED SERVICE

Only qualified personnel may install or repair this product.



KEEP YOUR DEVICE DRY

Your device is not water-resistant. Keep it dry.



PROTECT YOUR HEARING

Listen to a headset at a moderate level, and do not hold the device near your ear when the loudspeaker is in use.

Battery removing

Switch the device off and disconnect the charger before removing the battery.

Product and safety information

Feature specific instructions



Important: Do not use a mini-UICC SIM card, also known as a micro-SIM card, a micro-SIM card with an adapter, or a SIM card that has a mini-UICC cutout (see figure) in this device. A micro SIM card is smaller than the standard SIM card. This device does not support the use of micro-SIM cards and use of incompatible SIM cards may damage the card or the device, and may corrupt data stored on the card.



Your device may have internal and external antennas. Avoid touching the antenna area unnecessarily while the antenna is transmitting or receiving. Contact with antennas affects the communication quality and may cause a higher power level during operation and may reduce the battery life.

i) You can send text messages that are longer than the character limit for a single message. Longer messages are sent as two or more messages. Your service provider may charge accordingly.

Characters with accents, other marks, or some language options, take more space, and limit the number of characters that can be sent in a single message.

ii) To listen to the radio, you need to attach a compatible headset to the device. The headset acts as an antenna.

iii) Do not shine the flashlight in anyone's eyes.

iv) Sending and receiving messages in some languages is a network service. For availability, contact your service provider. Send messages only to devices that support the selected language.

v) Use only compatible memory cards approved by Nokia for use with this device. Incompatible cards may damage the card and the device and corrupt data stored on the card.

Your device supports microSD cards with a capacity of up to 16 GB.



Important: Do not remove the memory card when an application is using it. Doing so may damage the memory card and the device, and corrupt data stored on the card.

Network services and costs

Your device is approved for use on the (E)GSM 900 and 1800 MHz networks.

To use the device, you need a subscription with a service provider.

Using network services and downloading content to your device requires a network connection and may result in data traffic costs. Some product features require support from the network, and you may need to subscribe to them.

Take care of your device

Handle your device, battery, charger and accessories with care. The following suggestions help you protect your warranty coverage.

- Keep the device dry. Precipitation, humidity, and all types of liquids or moisture can contain minerals that corrode electronic circuits. If your device gets wet, remove the battery, and allow the device to dry.
- Do not use or store the device in dusty or dirty areas. Moving parts and electronic components can be damaged.
- Do not store the device in high temperatures. High temperatures can shorten the life of the device, damage the battery, and warp or melt plastics.

- Do not store the device in cold temperatures. When the device warms to its normal temperature, moisture can form inside the device and damage electronic circuits.
- Do not attempt to open the device other than as instructed in the user guide.
- Unauthorised modifications may damage the device and violate regulations governing radio devices.
- Do not drop, knock, or shake the device. Rough handling can break internal circuit boards and mechanics.
- Only use a soft, clean, dry cloth to clean the surface of the device.
- Do not paint the device. Paint can clog moving parts and prevent proper operation.
- Switch off the device and remove the battery from time to time for optimum performance.
- Keep your device away from magnets or magnetic fields.
- To keep your important data safe, store it in at least two separate places, such as your device, memory card, or computer, or write down important information.

Recycle

Always return your used electronic products, batteries, and packaging materials to dedicated collection points. This way you help prevent uncontrolled waste disposal and promote the recycling of materials.

Crossed-out wheeled-bin symbol



The crossed-out wheeled-bin symbol on your product, battery, literature, or packaging reminds you that all electrical and electronic products, batteries, and accumulators must be taken to separate collection at the end of their working life. This requirement applies in the European Union. Do not dispose of these products as unsorted municipal waste. For more environmental information, see the product Eco profile at www.nokia.com/ecoprofile.

Batteries and chargers

Battery and charger information

Your device is intended for use with a BL-5J rechargeable battery. Nokia may make additional battery models available for this device. Always use original Nokia batteries.

This device is intended for use when supplied with power from the following chargers: AC-3. The exact Nokia charger model number may vary depending on the plug type, identified by E, X, AR, U, A, C, K, or B.

The battery can be charged and discharged hundreds of times, but it will eventually wear out. When the talk and standby times are noticeably shorter than normal, replace the battery.

Battery safety

Always switch the device off and disconnect the charger before removing the battery. When you unplug a charger or an accessory, hold and pull the plug, not the cord.

When your charger is not in use, unplug it from the electrical plug and the device. Do not leave a fully charged battery connected to a charger, as overcharging may shorten the battery's lifetime. If left unused, a fully charged battery will lose its charge over time.

Always keep the battery between 15°C and 25°C (59°F and 77°F). Extreme temperatures reduce the capacity and lifetime of the battery. A device with a hot or cold battery may not work temporarily.

Accidental short-circuiting can happen when a metallic object touches the metal strips on the battery, for example, if you carry a spare battery in your pocket. Short-circuiting may damage the battery or the connecting object.

Do not dispose of batteries in a fire as they may explode. Dispose of batteries according to local regulations. Recycle when possible. Do not dispose as household waste.

Do not dismantle, cut, open, crush, bend, puncture, or shred cells or batteries. If a battery leaks, do not let battery liquid touch skin or eyes. If this happens, immediately flush the affected areas with water, or seek medical help.

Do not modify, remanufacture, attempt to insert foreign objects into the battery, or immerse or expose it to water or other liquids. Batteries may explode if damaged.

Use the battery and charger for their intended purposes only. Improper use, or use of

unapproved batteries or incompatible chargers may present a risk of fire, explosion, or other hazard, and may invalidate any approval or warranty. If you believe the battery or charger is damaged, take it to a service centre for inspection before continuing to use it. Never use a damaged battery or charger. Only use the charger indoors.

Additional safety information **Make an emergency call**

1. Make sure the device is switched on.
2. Check for adequate signal strength. You may also need to do the following:
 - Insert a SIM card.
 - Deactivate call restrictions you have activated for your device, such as call barring, fixed dialling, or closed user group.
3. Press the end key repeatedly, until the home screen is displayed.
4. Enter the official emergency number for your present location. Emergency call numbers vary by location.
5. Press the call key.
6. Give the necessary information as accurately as possible. Do not end the call until given permission to do so.



Important: Activate both cellular and internet calls, if your device supports internet calls. The device may attempt to make emergency calls both through cellular networks and through your internet call service provider. Connections in all conditions cannot be guaranteed. Never rely solely on any

wireless device for essential communications like medical emergencies.

Small children

Your device and its accessories are not toys. They may contain small parts. Keep them out of the reach of small children.

Medical devices

Operation of radio transmitting equipment, including wireless phones, may interfere with the function of inadequately protected medical devices. Consult a physician or the manufacturer of the medical device to determine whether they are adequately shielded from external radio frequency energy.

Implanted medical devices


Manufacturers of medical devices recommend a minimum separation of 15.3 centimetres (6 inches) between a wireless device and an implanted medical device, such as a pacemaker or implanted cardioverter defibrillator, to avoid potential interference with the medical device. Persons who have such devices should:

- Always keep the wireless device more than 15.3 centimetres (6 inches) from the medical device.
- Not carry the wireless device in a breast pocket.
- Hold the wireless device to the ear opposite the medical device.
- Turn the wireless device off if there is any reason to suspect that interference is taking place.

- Follow the manufacturer directions for the implanted medical device.

If you have any questions about using your wireless device with an implanted medical device, consult your health care provider.

Hearing

 **Warning:** When you use the headset, your ability to hear outside sounds may be affected. Do not use the headset where it can endanger your safety.

Some wireless devices may interfere with some hearing aids.


Operating environment

This device meets radio frequency exposure guidelines in the normal use position at the ear or at least 1.5 centimetres (5/8 inch) away from the body. Any carry case, belt clip, or holder for body-worn operation should not contain metal and should position the device the above-stated distance from your body.

To send data files or messages requires a quality connection to the network. Data files or messages may be delayed until such a connection is available. Follow the separation distance instructions until the transmission is completed.

Vehicles

Radio signals may affect improperly installed or inadequately shielded electronic systems in motor vehicles such as electronic fuel injection, electronic antilock braking,



electronic speed control, and air bag systems. For more information, check with the manufacturer of your vehicle or its equipment.

Only qualified personnel should install the device in a vehicle. Faulty installation or service may be dangerous and may invalidate your warranty. Check regularly that all wireless device equipment in your vehicle is mounted and operating properly. Do not store or carry flammable liquids, gases, or explosive materials in the same compartment as the device, its parts, or accessories. Remember that air bags inflate with great force. Do not place your device or accessories in the air bag deployment area.

Potentially explosive environments

Switch off your device in any area with a potentially explosive atmosphere, for example near gas pumps at service stations. Sparks in such areas could cause an explosion or fire resulting in bodily injury or death. Observe restrictions in fuel service stations, storage, and distribution areas; chemical plants; or where blasting operations are in progress. Areas with a potentially explosive atmosphere are often, but not always, clearly marked. They include areas where you would be advised to turn off your vehicle engine, below deck on boats, chemical transfer or storage facilities and where the air contains chemicals or particles such as grain, dust, or metal powders. You should check with the manufacturers of vehicles using liquefied petroleum gas (such as propane or butane) to determine if this device can be safely used in their vicinity.

Certification information (SAR)

Your mobile device is a radio transmitter and receiver. It is designed not to exceed the limits for exposure to radio waves recommended by international guidelines. These guidelines were developed by the independent scientific organisation ICNIRP and include safety margins designed to assure the protection of all persons, regardless of age and health.

The exposure guidelines for mobile devices employ a unit of measurement known as the Specific Absorption Rate or SAR. The SAR limit stated in the ICNIRP guidelines is 2.0 watts/kilogram (W/kg) averaged over 10 grams of tissue. Tests for SAR are conducted using standard operating positions with the device transmitting at its highest certified power level in all tested frequency bands. The actual SAR level of an operating device can be below the maximum value because the device is designed to use only the power required to reach the network. That amount changes depending on a number of factors such as how close you are to a network base station.

The highest SAR value under the ICNIRP guidelines for use of the device at the ear is 1.28 W/kg.

Use of device accessories may result in different SAR values. SAR values may vary depending on national reporting and testing requirements and the network band. Additional SAR information may be provided under product information at www.nokia.com.

DECLARATION OF CONFORMITY

CE 0434

Hereby, NOKIA CORPORATION declares that this RM-732 product is in compliance with the essential requirements and other relevant provisions of Directive 1999/5/EC. A copy of the Declaration of Conformity can be found at www.nokia.com/phones/declaration_of_conformity/.

© 2011 Nokia. All rights reserved.

Nokia and Nokia Connecting People are trademarks or registered trademarks of Nokia Corporation. Nokia tune is a sound mark of Nokia Corporation. Other product and company names mentioned herein may be trademarks or tradenames of their respective owners.

Reproduction, transfer, distribution, or storage of part or all of the contents in this document in any form without the prior written permission of Nokia is prohibited. Nokia operates a policy of continuous development. Nokia reserves the right to make changes and improvements to any of the products described in this document without prior notice.

To the maximum extent permitted by applicable law, under no circumstances shall Nokia or any of its licensors be responsible for any loss of data or income or any special,

incidental, consequential or indirect damages howsoever caused.

The contents of this document are provided "as is". Except as required by applicable law, no warranties of any kind, either express or implied, including, but not limited to, the implied warranties of merchantability and fitness for a particular purpose, are made in relation to the accuracy, reliability or contents of this document. Nokia reserves the right to revise this document or withdraw it at any time without prior notice.

The availability of products, features, applications and services may vary by region. For more information, contact your Nokia dealer or your service provider. This device may contain commodities, technology or software subject to export laws and regulations from the US and other countries. Diversion contrary to law is prohibited.