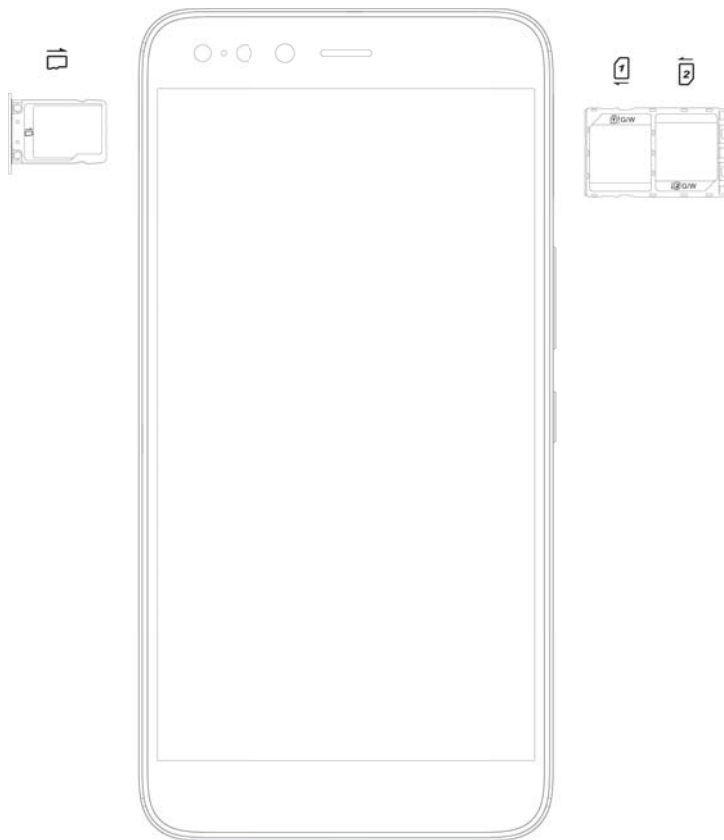


Getting started

- Thank you for choosing Infinix smartphone. We hope this product will bring you a brand new experience.
- The demo is only for reference, please subject to the specific product software.

Inserting SIM card

1. Push the holder in the SIM card slots next to the thimble hole it pops out .
2. Place the SIM cards face down and align it with the opening of the holder .
3. Insert them into the SIM card slots of the phone properly .



Charging the phone

You can charge your device using a charger or by connecting it to the computer using a USB cable (comes with the phone).

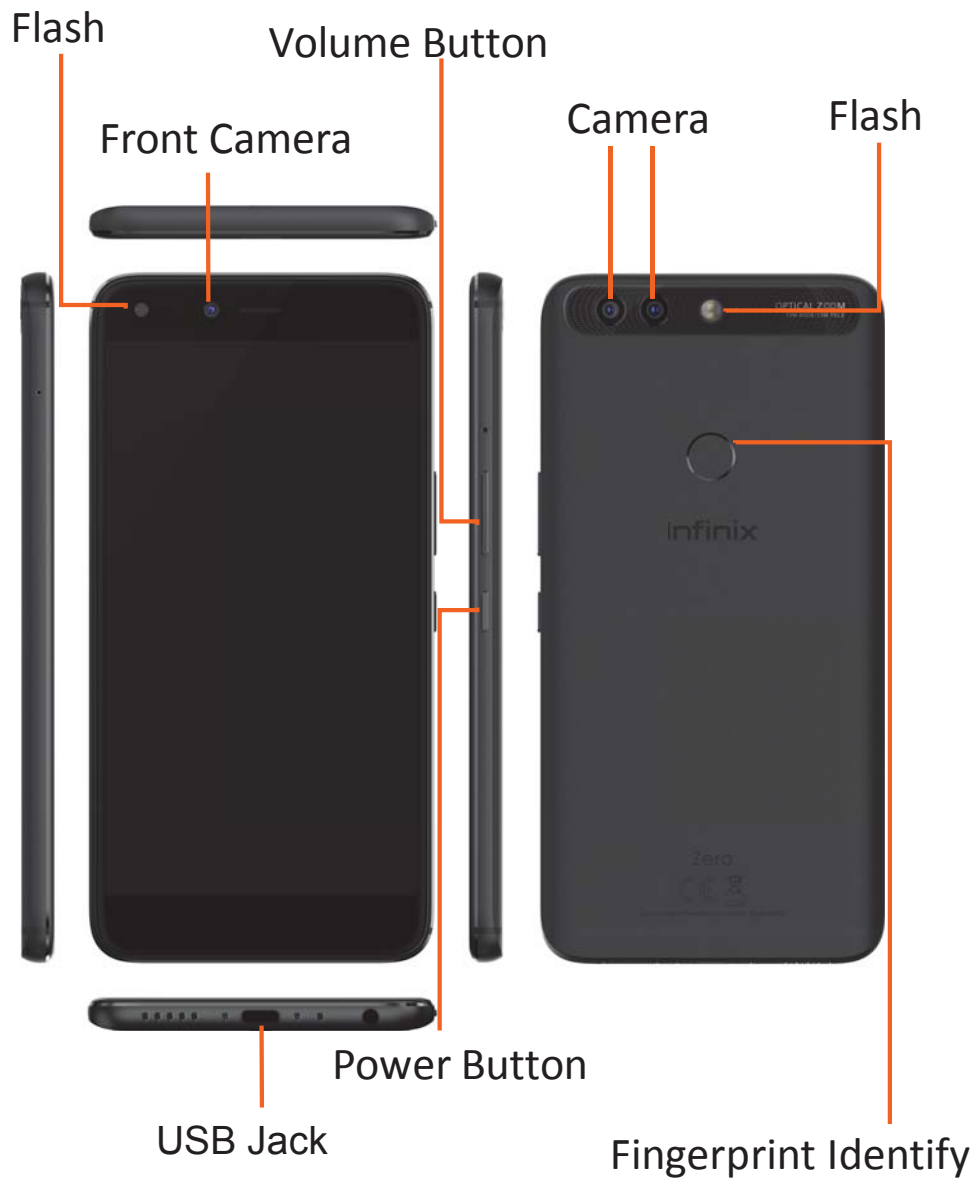
Note: Only use compatible charger; immovable inbuilt battery.

The phone can be restarted by holding the power button for 10 seconds.



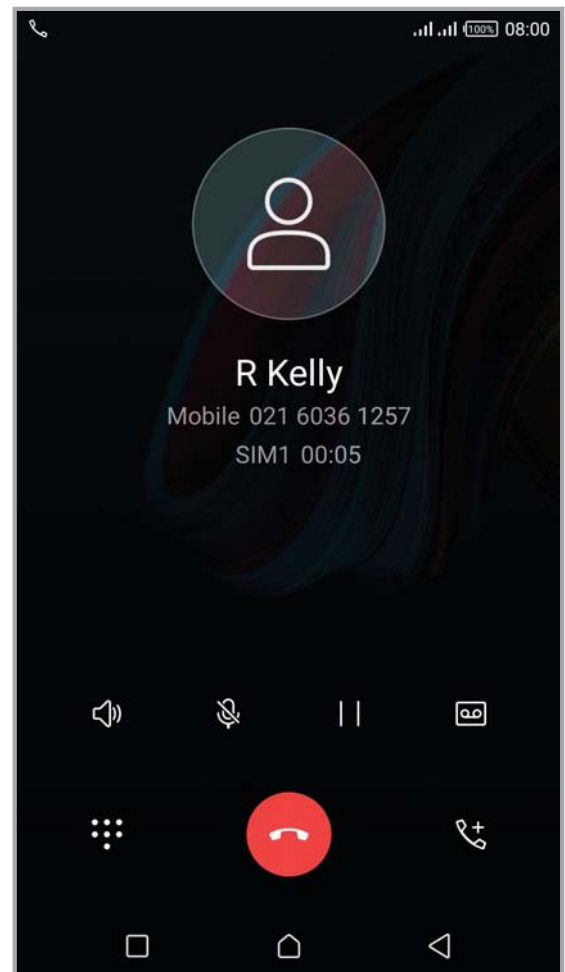
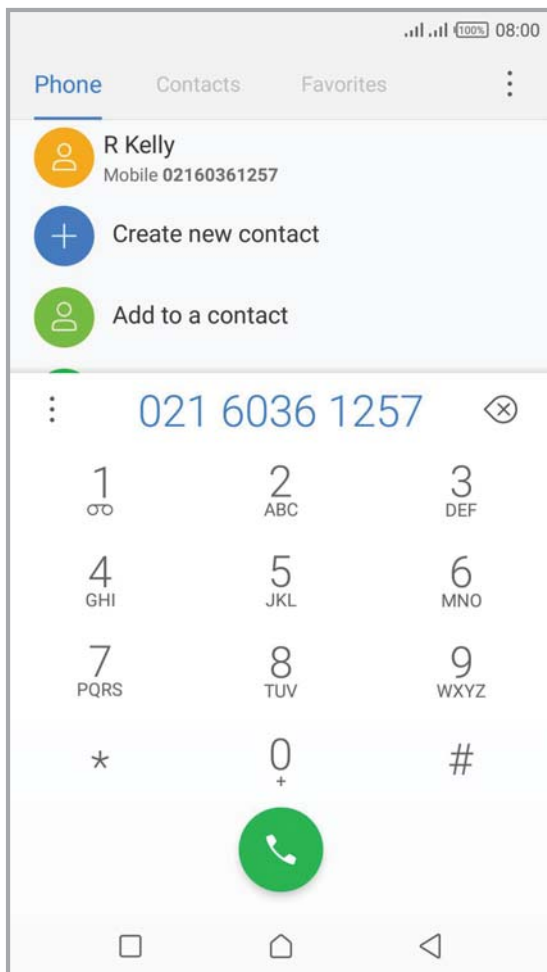
Features

The phone supports 4G SIM cards and its camera, video recorder, FM radio, and music and sound recorder offer amazing experiences.



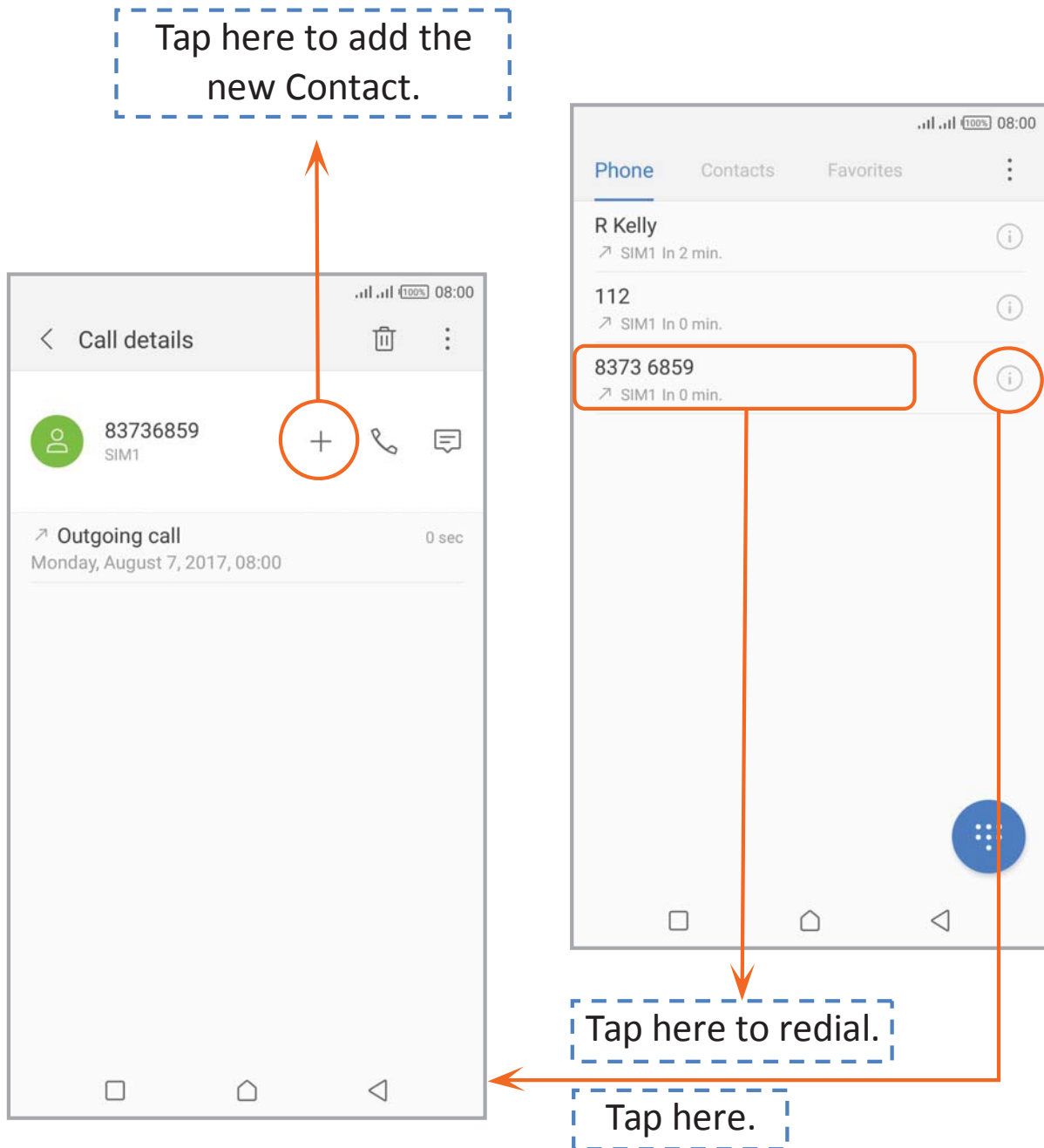
Making a call

On the Home Screen, tap  and dial a complete phone number to make a call.



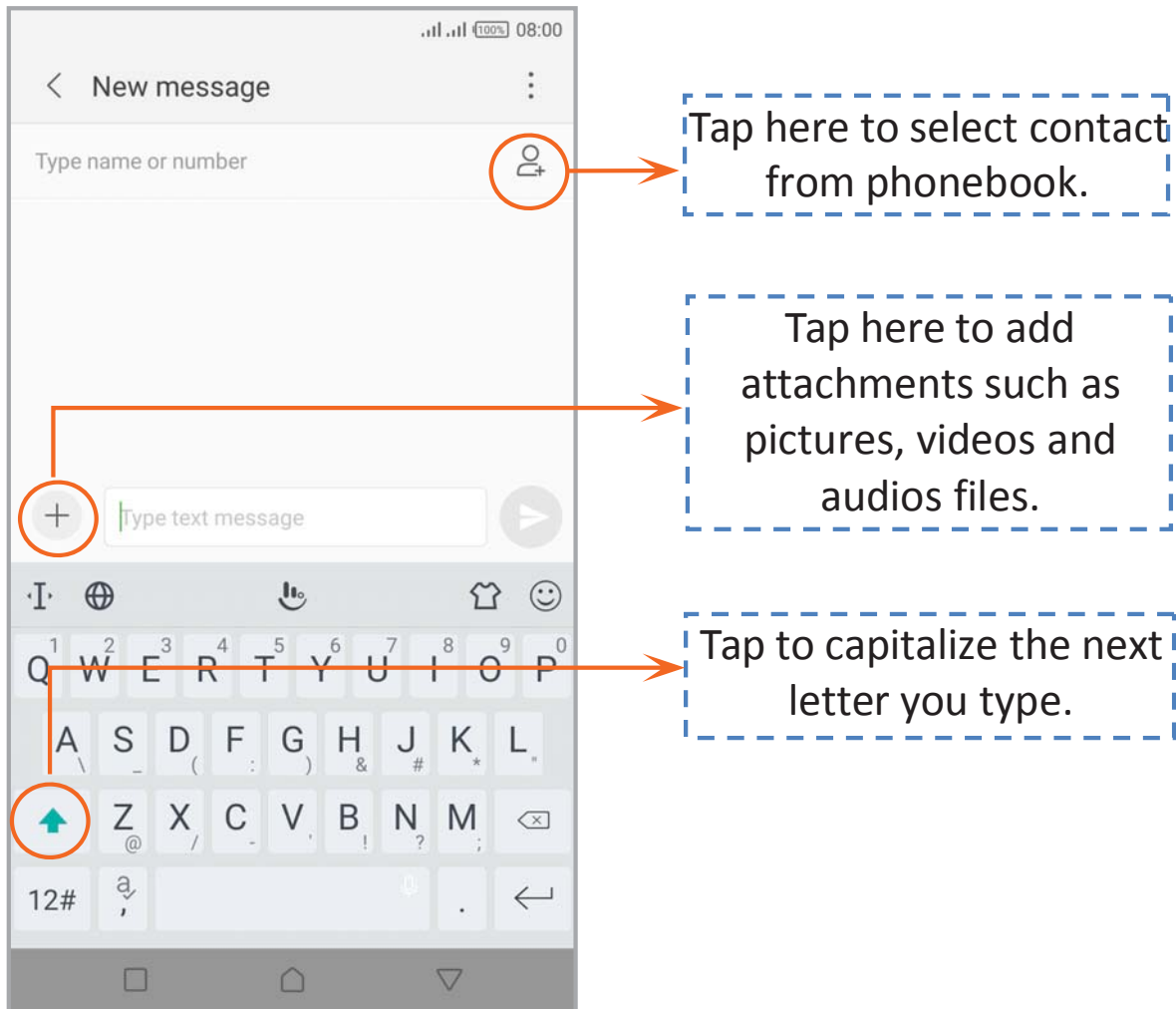
Call log

In the call log, you can make a call, add new contact or send a message.



Sending and receiving message(s)

Enter Messaging, and then compose new message. You can open the keyboard by tapping on a text field.



When you are composing a new text message, you can select text for cutting or copying. The selected text is highlighted in green.

Tap and hold the text field or portion that contains text.

You can select all texts, copy, cut and paste.

When a new message is received, you can read it by opening the notification panel and clicking the message, or entering Messaging to read it directly.

Specific Absorption Rate (SAR) Certification

THIS DEVICE MEETS INTERNATIONAL GUIDELINES FOR EXPOSURE TO RADIO WAVES

Your mobile device is a radio transmitter and receiver. It is designed not to exceed the limits for exposure to radio waves (radio frequency electromagnetic fields) recommended by international guidelines. The guidelines were developed by an independent scientific organization (ICNIRP) and include a substantial safety margin designed to assure the safety of all persons, regardless of age and health. The radio wave exposure guidelines use a unit of measurement known as the Specific Absorption Rate, or SAR. The SAR limit for mobile devices is 2.0 W/kg. Tests for SAR are conducted using standard operating positions with the device transmitting at its highest certified power level in all tested frequency bands. The highest SAR values under the ICNIRP guidelines for this device model are:

Maximum SAR for this model and conditions under which it was recorded	
Head	0.508W/Kg
Body	0.529W/Kg

During use, the actual SAR values for this device are usually well below the values stated above. This is because, for purposes of system efficiency and to minimize interference on the network, the operating power of your mobile device is automatically decreased when full power is not needed for the call. The lower the power output of the device, the lower its SAR value.

A body-worn SAR test has been performed on this device at a separation distance of 0.5 cm. To meet RF exposure guidelines during body-worn operation, the device must be positioned at least 0.5 cm away from the body.

Organizations such as the World Health Organization and the US Food and Drug Administration have suggested that if people are concerned and want to reduce their exposure, they could use a hands-free accessory to keep the wireless device away from the head and body during use, or reduce the amount of time spent using the device. For more information, visit www.infinixmobility.com and search for your device with the model number.