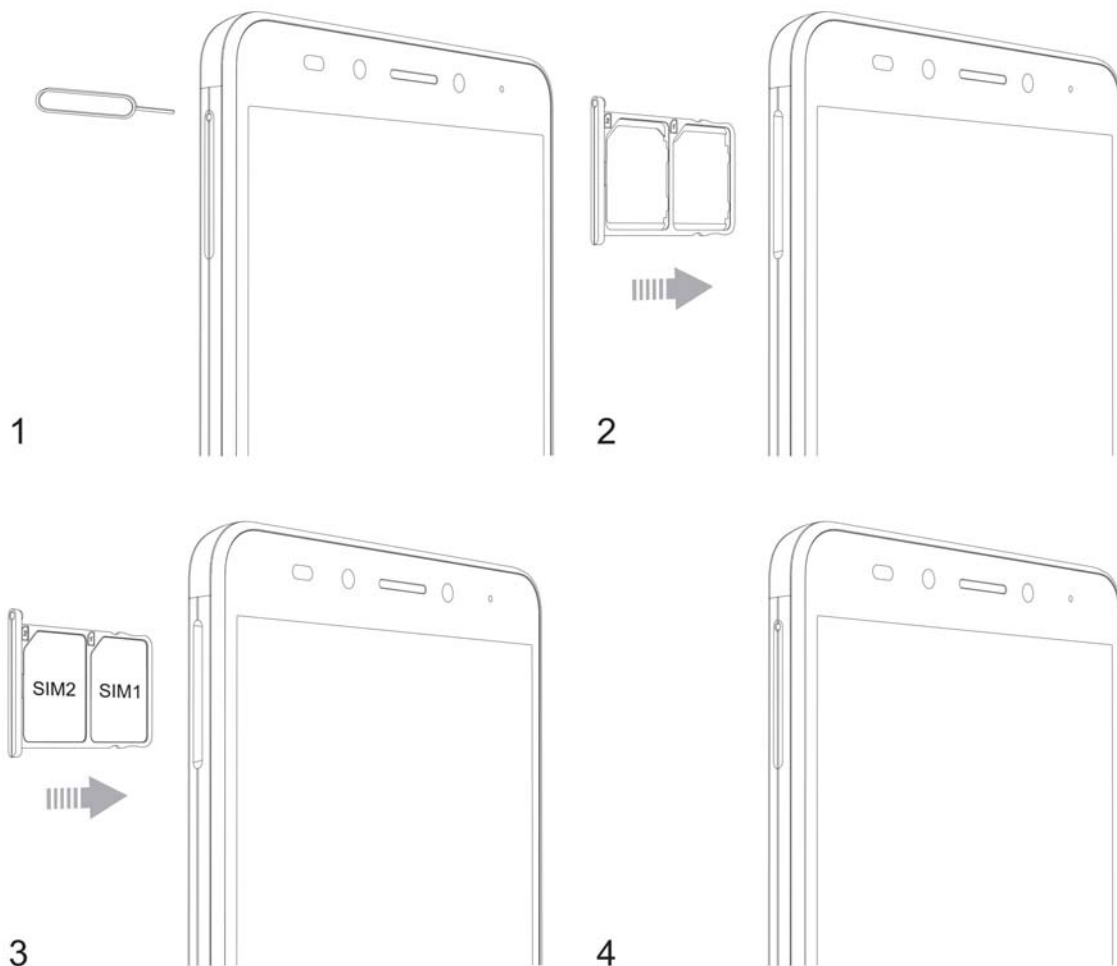


Getting started

- Thank you for choosing Infinix smartphone. We hope this product will bring you a brand new experience.

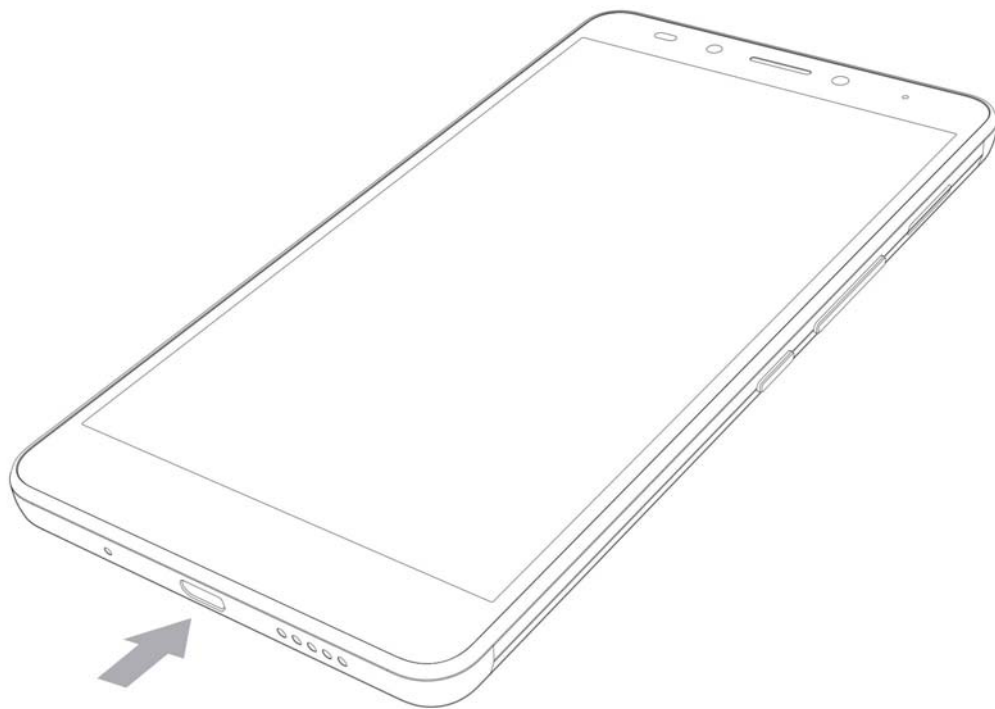
Inserting SIM card

1. Push the holder in the SIM card slots next to the thimble hole it pops out .
2. Place the SIM cards face down and align it with the opening of the holder .
3. Insert them into the SIM card slots of the phone properly .



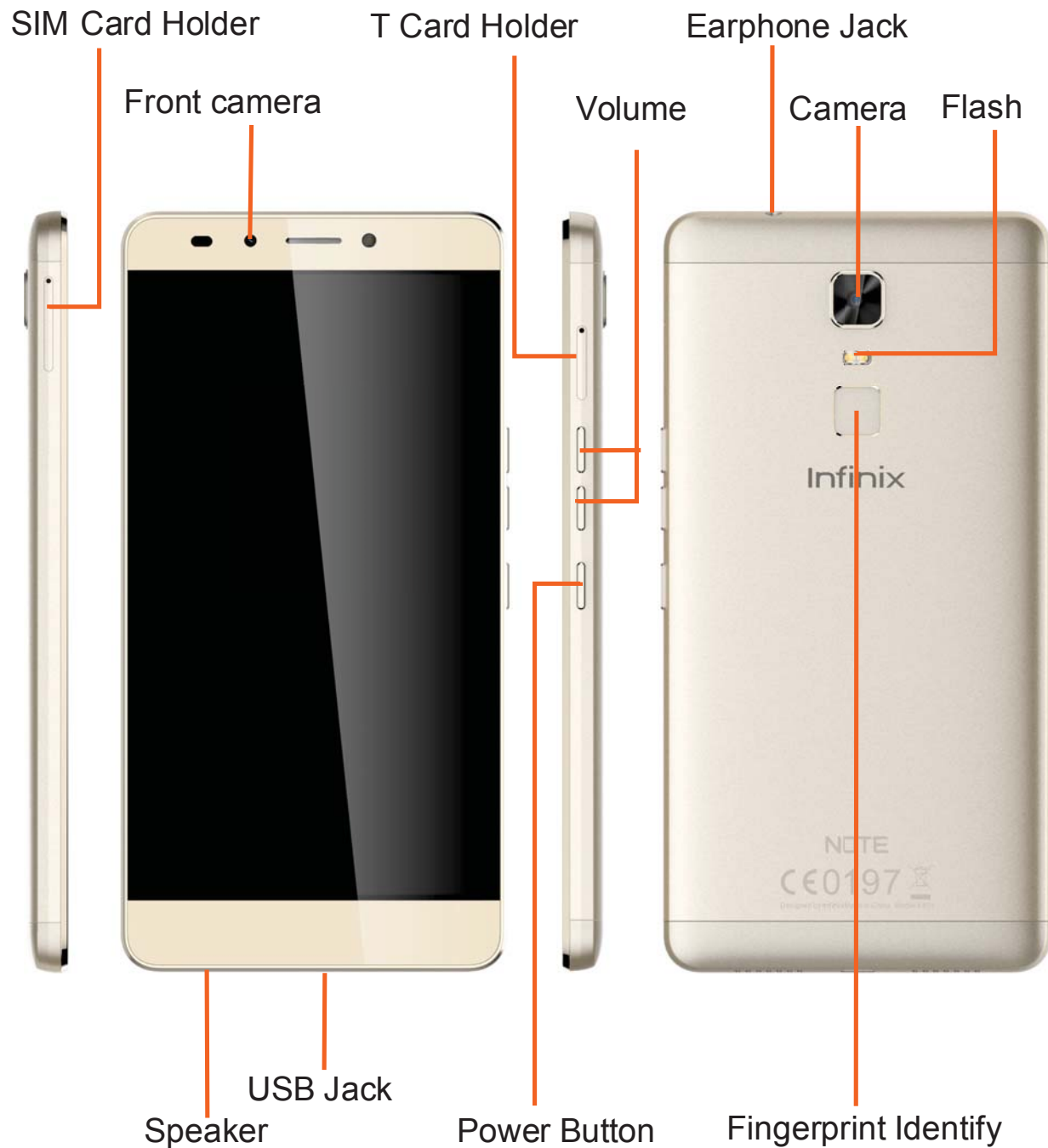
Charging the phone

The device can be charged using a charger or by connecting it to a computer through a USB cable (included with the phone).




*Image for illustration only.

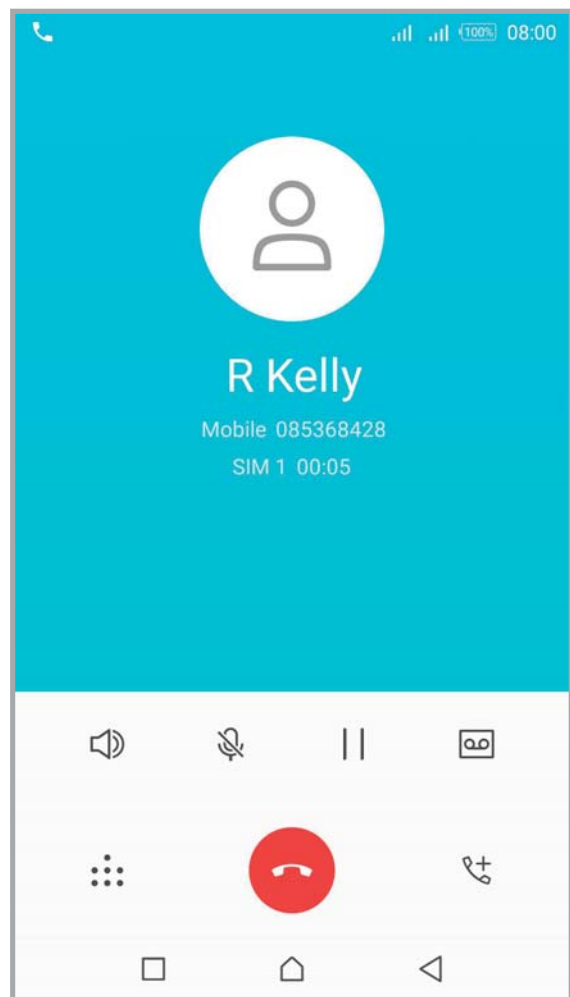
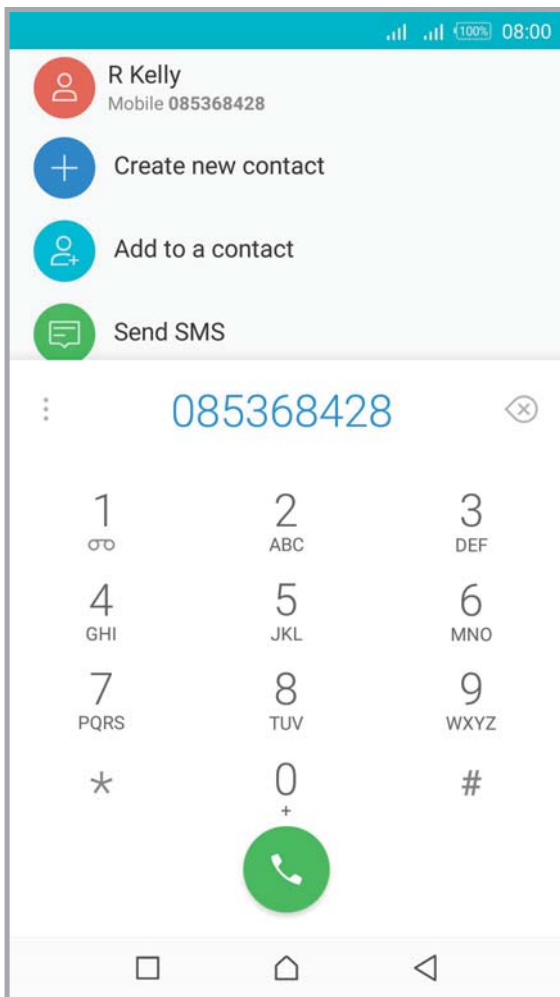
Features and parts



***Note:** The phone can be restarted by holding the power button for 10 seconds.

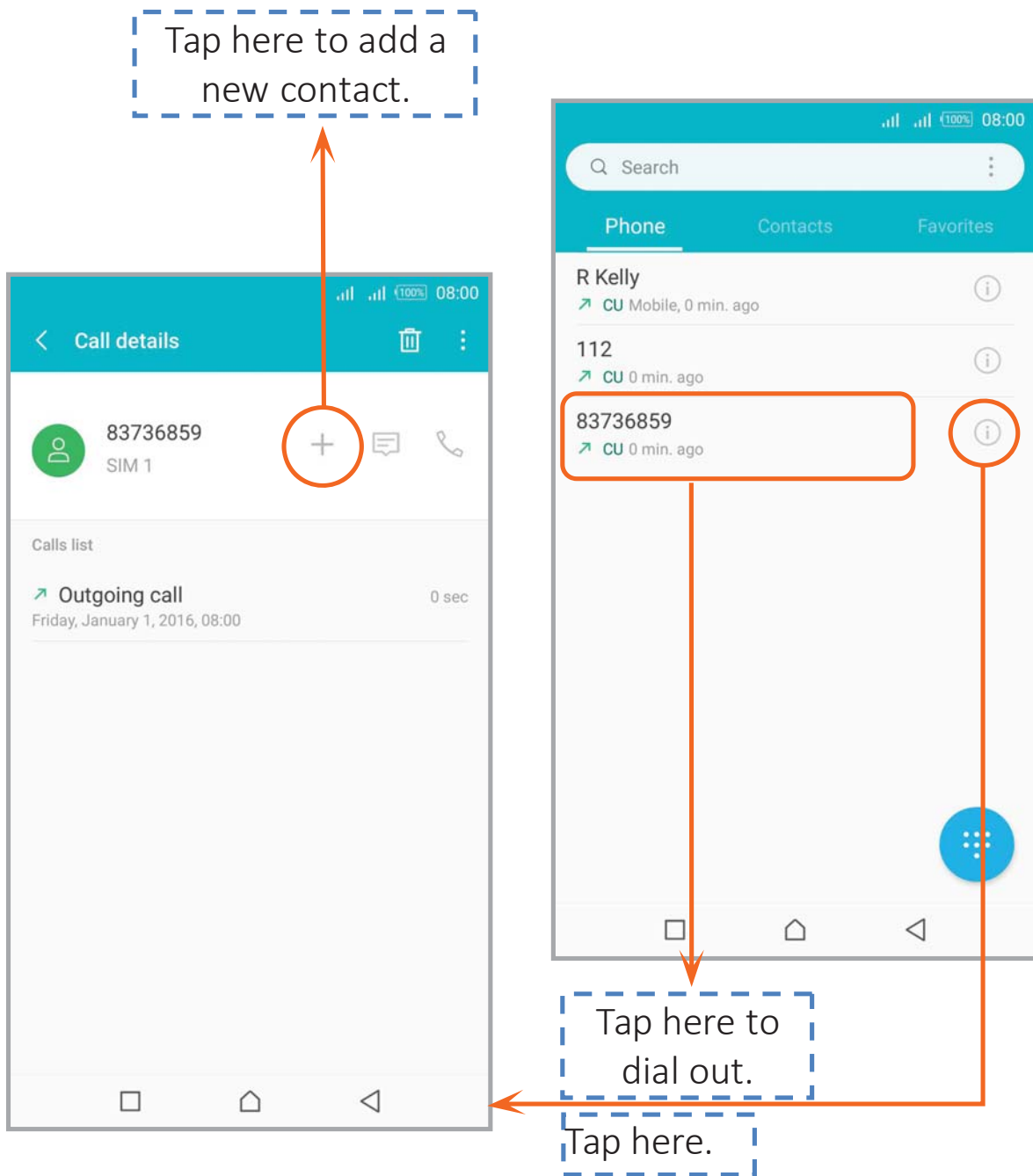
Making a call

On the start screen, tap  and enter a complete phone number to make a call.



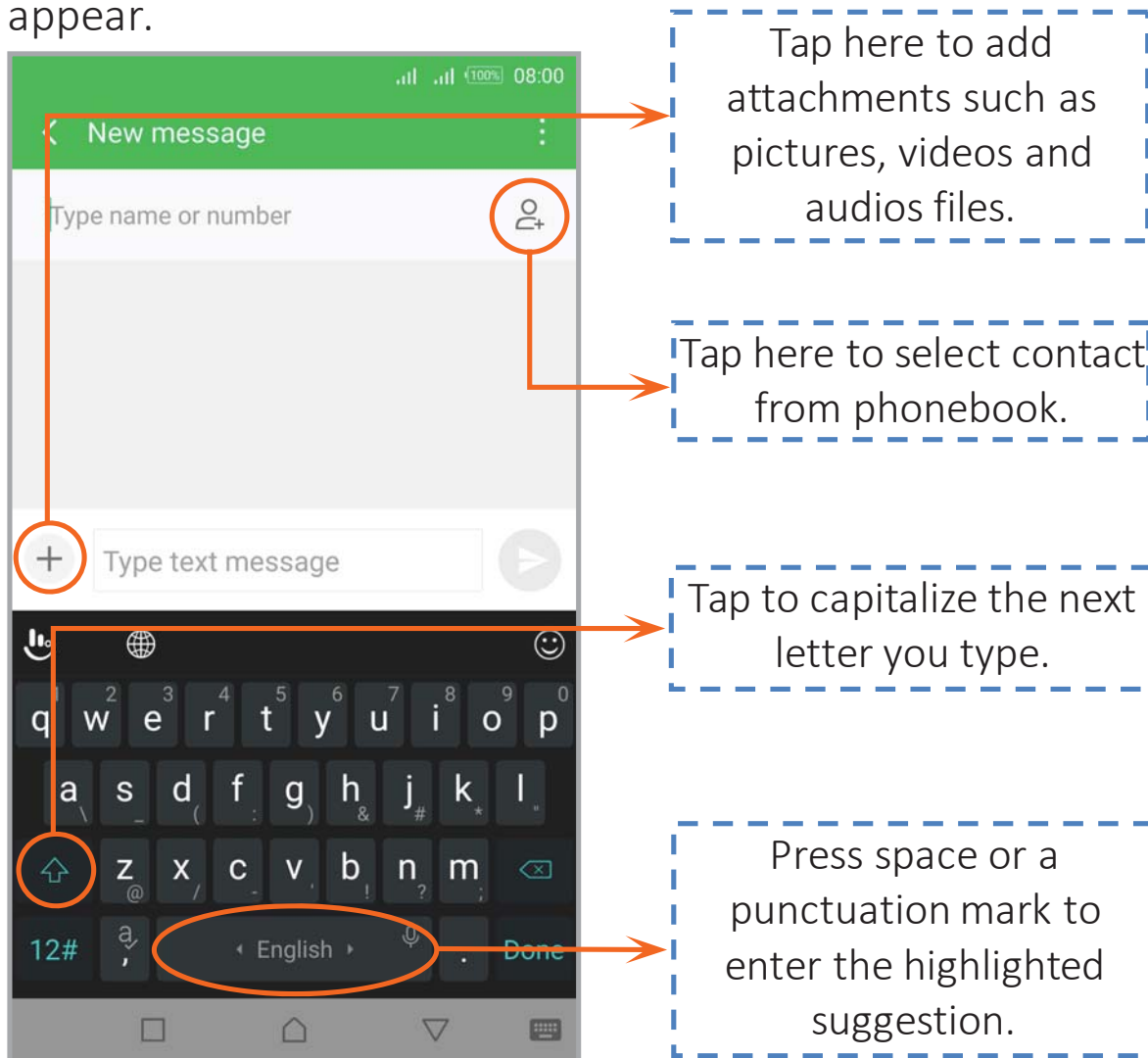
Call log

You can make calls, add new contacts and send messages at the call records interface.



Sending and Receiving message(s)

Enter the **Messaging** interface to create a new message. Touch the space for text input and the virtual keyboard will appear.



a. When you are composing a new text message, you can select text for cutting or copying. The selected text is highlighted in blue.

1. Tap and hold the text field or portion that contains text.
2. You can select all texts, copy, cut and paste.

b. When a new message is received, you can read it by opening the notification panel and clicking the message, or entering **Messaging** to read it directly.

Specific Absorption Rate (SAR) Certification

THIS DEVICE MEETS INTERNATIONAL GUIDELINES FOR EXPOSURE TO RADIO WAVES

Your mobile device is a radio transmitter and receiver. It is designed not to exceed the limits for exposure to radio waves (radio frequency electromagnetic fields) recommended by international guidelines. The guidelines were developed by an independent scientific organization (ICNIRP) and include a substantial safety margin designed to assure the safety of all persons, regardless of age and health.

The radio wave exposure guidelines use a unit of measurement known as the Specific Absorption Rate, or SAR. The SAR limit for mobile devices is 2.0 W/kg. Tests for SAR are conducted using standard operating positions with the device transmitting at its highest certified power level in all tested frequency bands. The highest SAR values under the ICNIRP guidelines for this device model are:

Maximum SAR for this model and conditions under which it was recorded	
Head	0.376W/Kg
Body	0.765W/Kg

During use, the actual SAR values for this device are usually well below the values stated above. This is because, for purposes of system efficiency and to minimize interference on the network, the operating power of your mobile device is automatically decreased when full power is not needed for the call. The lower the power output of the device, the lower its SAR value.

A body-worn SAR test has been performed on this device at a separation distance of 0.5 cm. To meet RF exposure guidelines during body-worn operation, the device must be positioned at least 0.5 cm away from the body.

Organizations such as the World Health Organization and the US Food and Drug Administration have suggested that if people are concerned and want to reduce their exposure, they could use a hands-free accessory to keep the wireless device away from the head and body during use, or reduce the amount of time spent using the device. For more information, visit www.infinixmobility.com and search for your device with the model number.