

SAMSUNG

SM-J510F
SM-J510FN/DS
SM-J510H/DS
SM-J710FN
SM-J710GN/DS

SM-J510F/DS
SM-J510FN/DD
SM-J710F
SM-J710FN/DS

SM-J510FN
SM-J510GN/DS
SM-J710F/DS
SM-J710FN/DD

User Manual

Table of Contents

Basics

- 4 Read me first
- 5 Package contents
- 6 Device layout
- 8 Battery
- 13 SIM or USIM card
- 18 Memory card (microSD card)
- 19 Turning the device on and off
- 20 Touchscreen
- 23 Home screen
- 29 Lock screen
- 30 Notification panel
- 32 Entering text
- 33 Screen capture
- 34 Opening apps
- 34 Samsung account
- 36 Transferring data from your previous device
- 38 Device and data management
- 41 Sharing features
- 42 Emergency mode

Applications

- 43 Installing or uninstalling apps
- 45 Phone
- 49 Contacts
- 51 Messages
- 54 Internet
- 56 Email
- 57 Camera
- 66 Gallery
- 68 S Planner
- 70 S Health
- 73 Voice Recorder
- 74 My Files
- 74 Memo
- 75 Clock
- 76 Calculator
- 77 Radio
- 78 Google apps

Settings

80	Introduction	98	Easy mode
80	Wi-Fi	98	Accessibility
82	Bluetooth	99	Accounts
83	Flight mode	100	Backup and reset
84	Mobile hotspot and tethering	100	Language and input
85	Data usage	101	Battery
85	SIM card manager (dual SIM models)	101	Storage
86	Mobile networks	101	Accessories
86	NFC and payment (NFC-enabled models)	102	Date and time
89	More connection settings	102	User manual
90	Smart Manager	102	About device
92	Applications		
92	Sounds and vibrations		
93	Notifications		
93	Do not disturb		
94	Display		
94	Advanced features		
95	Wallpaper		
95	Themes		
95	Home screen		
95	Lock screen and security		
97	Privacy and safety		

Appendix

103	Troubleshooting
-----	-----------------

Basics

Read me first

Please read this manual before using the device to ensure safe and proper use.

- Descriptions are based on the device's default settings.
- Some content may differ from your device depending on the region, service provider, model specifications, or device's software.
- Content (high quality content) that requires high CPU and RAM usage will affect the overall performance of the device. Apps related to the content may not work properly depending on the device's specifications and the environment that it is used in.
- Samsung is not liable for performance issues caused by apps supplied by providers other than Samsung.
- Samsung is not liable for performance issues or incompatibilities caused by edited registry settings or modified operating system software. Attempting to customise the operating system may cause the device or apps to work improperly.
- Software, sound sources, wallpapers, images, and other media provided with this device are licensed for limited use. Extracting and using these materials for commercial or other purposes is an infringement of copyright laws. Users are entirely responsible for illegal use of media.
- You may incur additional charges for data services, such as messaging, uploading and downloading, auto-syncing, or using location services depending on your data plan. For large data transfers, it is recommended to use the Wi-Fi feature.
- Default apps that come with the device are subject to updates and may no longer be supported without prior notice. If you have questions about an app provided with the device, contact a Samsung Service Centre. For user-installed apps, contact service providers.
- Modifying the device's operating system or installing softwares from unofficial sources may result in device malfunctions and data corruption or loss. These actions are violations of your Samsung licence agreement and will void your warranty.
- Depending on the region, you can view the regulatory information on the device. To view the information, tap **Apps** → **Settings** → **About device** → **Regulatory information**.

Instructional icons



Warning: situations that could cause injury to yourself or others



Caution: situations that could cause damage to your device or other equipment



Notice: notes, usage tips, or additional information

Package contents

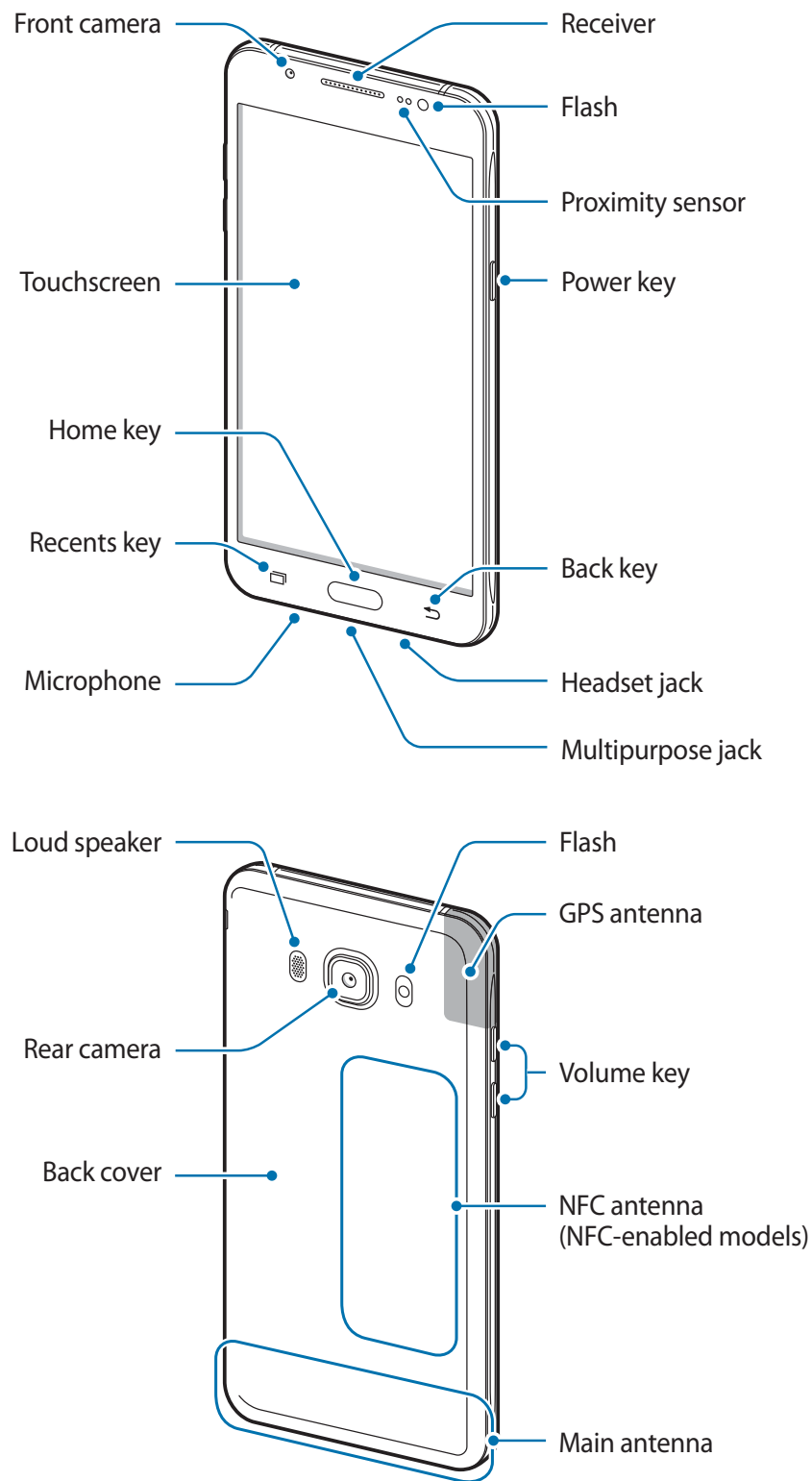
Check the product box for the following items:

- Device
- Battery
- Quick start guide



- The items supplied with the device and any available accessories may vary depending on the region or service provider.
- The supplied items are designed only for this device and may not be compatible with other devices.
- Appearances and specifications are subject to change without prior notice.
- You can purchase additional accessories from your local Samsung retailer. Make sure they are compatible with the device before purchase.
- Use only Samsung-approved accessories. Using unapproved accessories may cause the performance problems and malfunctions that are not covered by the warranty.
- Availability of all accessories is subject to change depending entirely on manufacturing companies. For more information about available accessories, refer to the Samsung website.






Device layout





- Connectivity problems and battery drain may occur in the following situations:
 - If you attach metallic stickers on the antenna area of the device
 - If you attach a device cover made with metallic material to the device
 - If you cover the device's antenna area with your hands or other objects while using certain features, such as calls or the mobile data connection
- Using a Samsung-approved screen protector is recommended. Unapproved screen protectors may cause the sensors to malfunction.
- Do not allow water to contact the touchscreen. The touchscreen may malfunction in humid conditions or when exposed to water.

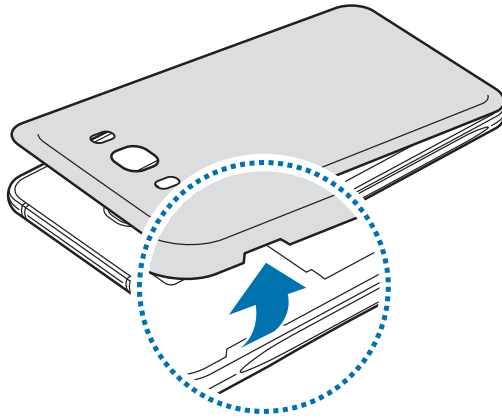
Keys

Key	Function
 Power	<ul style="list-style-type: none"> • Press and hold to turn the device on or off. • Press to turn on or lock the screen.
 Recents	<ul style="list-style-type: none"> • Tap to open the list of recent apps.
 Home	<ul style="list-style-type: none"> • Press to turn on the screen while the screen is locked. • Press to return to the Home screen. • Press and hold to launch Google.
 Back	<ul style="list-style-type: none"> • Tap to return to the previous screen.
 Volume	<ul style="list-style-type: none"> • Press to adjust the device volume.

Battery

Installing the battery

- 1 Remove the back cover.

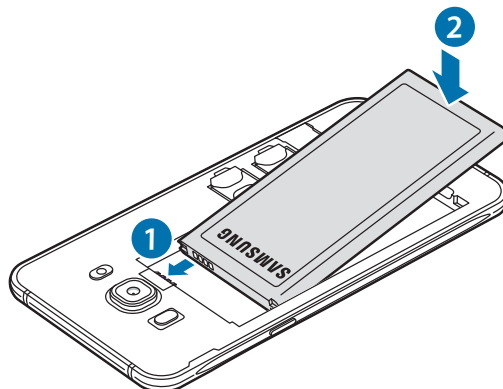


Be careful not to damage your fingernails when you remove the back cover.

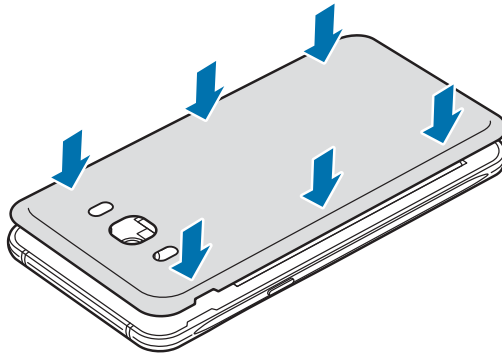


Do not bend or twist the back cover excessively. Doing so may damage the cover.

- 2 Insert the battery with the battery's gold-coloured contacts properly aligned with the device's contacts.

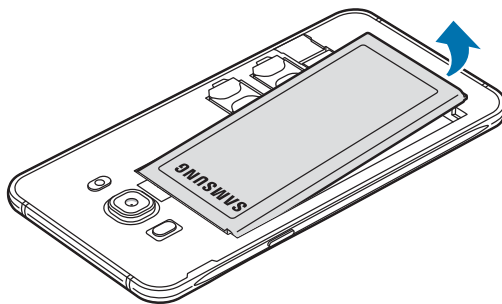


- 3 Replace the back cover.



Removing the battery

- 1 Remove the back cover.
- 2 Pull out the battery.



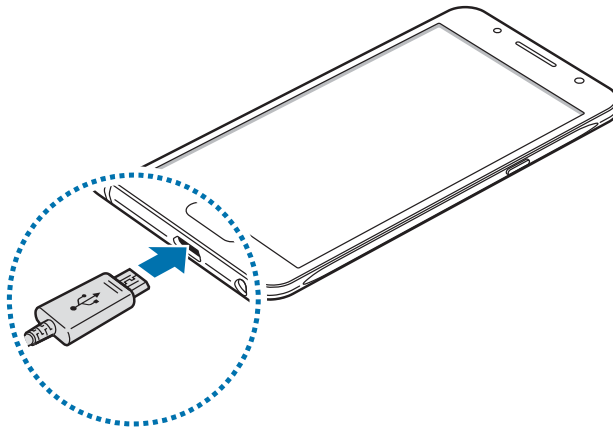
Charging the battery

Charge the battery before using it for the first time or when it has been unused for extended periods.



Use only Samsung-approved chargers, batteries, and cables. Unapproved chargers or cables can cause the battery to explode or damage the device.

- 1 Connect the USB cable to the USB power adaptor, and then plug the end of the USB cable into the multipurpose jack.



Connecting the charger improperly may cause serious damage to the device. Any damage caused by misuse is not covered by the warranty.

- 2 Plug the USB power adaptor into an electric socket.

- 3 After fully charging, disconnect the device from the charger. First unplug the charger from the device, and then unplug it from the electric socket.



Do not remove the battery before removing the charger. This may damage the device.



To save energy, unplug the charger when not in use. The charger does not have a power switch, so you must unplug the charger from the electric socket when not in use to avoid wasting power. The charger should remain close to the electric socket and easily accessible while charging.

Viewing the remaining charging time

While charging, open the Home screen and tap **Apps** → **Settings** → **Battery**.



The actual charging time may vary depending on the status of your device and the charging conditions. The remaining charging time may not be displayed when you charge the device in very cold or very hot conditions.

Reducing the battery consumption

Your device provides various options that help you conserve battery power.

- Optimise the device using the Smart manager.
- When you are not using the device, switch to sleep mode by pressing the Power key.
- Activate power saving mode.
- Close unnecessary apps.
- Deactivate the Bluetooth feature when not in use.
- Deactivate the Wi-Fi feature when not in use.
- Deactivate auto-syncing of apps that need to be synced, such as emails.
- Decrease the backlight time.
- Decrease the screen brightness.

Battery charging tips and precautions

- When the battery power is low, the battery icon appears empty.
- If the battery is completely discharged, the device cannot be turned on immediately when the charger is connected. Allow a depleted battery to charge for a few minutes before turning on the device.
- If you use multiple apps at once, network apps, or apps that need a connection to another device, the battery will drain quickly. To avoid losing power during a data transfer, always use these apps after fully charging the battery.
- Using a power source other than the charger, such as a computer, may result in a slower charging speed due to a lower electric current.
- The device can be used while it is charging, but it may take longer to fully charge the battery.
- If the device receives an unstable power supply while charging, the touchscreen may not function. If this happens, unplug the charger from the device.
- While charging, the device and the charger may heat up. This is normal and should not affect the device's lifespan or performance. If the battery gets hotter than usual, the charger may stop charging.
- If the device is not charging properly, take the device and the charger to a Samsung Service Centre.

Power saving mode

Save the battery power by limiting the device's functions.

On the Home screen, tap **Apps** → **Settings** → **Battery** → **Power saving mode**, and then tap the switch to activate it.

To automatically activate power saving mode when the remaining battery power reaches the preset level, tap **Start power saving** and select an option.

Ultra power saving mode

Use this mode to extend the device's battery power. In ultra power saving mode, the device performs the following:

- Displays colours on the screen as grey tones.
- Restricts the available apps to essential and selected apps only.
- Deactivates the mobile data connection when the screen turns off.
- Deactivates the Wi-Fi and Bluetooth features.

On the Home screen, tap **Apps** → **Settings** → **Battery** → **Ultra power saving mode**, and then tap the switch to activate it.

To deactivate ultra power saving mode, tap **MORE** → **Disable Ultra power saving mode**.



The usage time left shows the time remaining before the battery power runs out. Usage time left may vary depending on your device settings and operating conditions.

SIM or USIM card

Installing the SIM or USIM card

Insert the SIM or USIM card provided by the mobile telephone service provider.



Use caution not to lose or let others use the SIM or USIM card. Samsung is not responsible for any damages or inconveniences caused by lost or stolen cards.

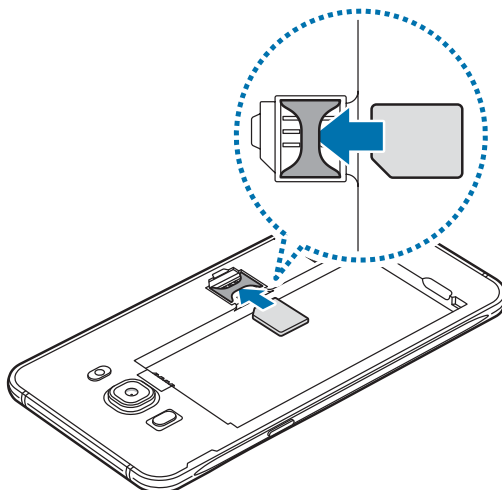


- Only microSIM cards work with the device.
- **Dual SIM models:** In some areas, data transfer speeds may be slower if two SIM cards are inserted in the device than when one SIM card is inserted.
- Some LTE services may not be available depending on the service provider. For more information about service availability, contact your service provider.

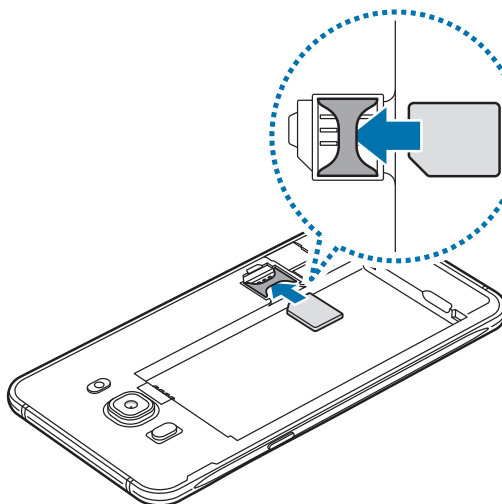
1 Remove the back cover and battery.

2 ► Single SIM models: Insert the SIM or USIM card with the gold-coloured contacts facing downwards.

- **Type 1 (SM-J510F, SM-J510FN):**



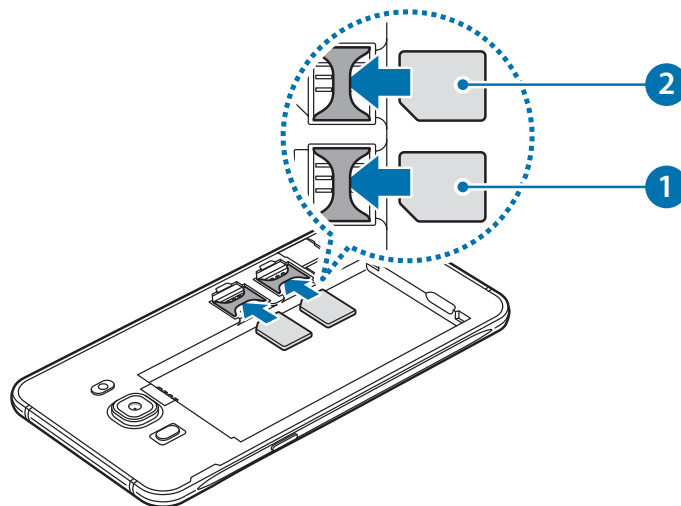
- **Type 2 (SM-J710F, SM-J710FN):**



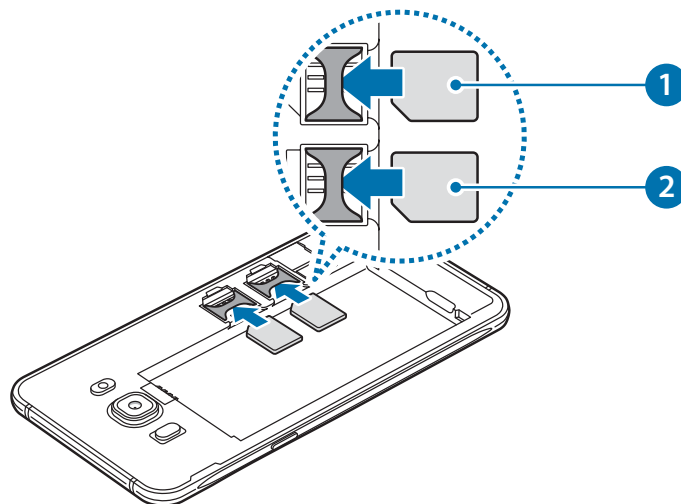
► **Dual SIM models:** Insert the SIM or USIM card with the gold-coloured contacts facing downwards.

Insert the primary SIM or USIM card into SIM card slot 1 (❶) and the secondary SIM or USIM card into SIM card slot 2 (❷).

- **Type 1** (SM-J510F/DS, SM-J510FN/DS, SM-J510FN/DD, SM-J510GN/DS, SM-J510H/DS):



- **Type 2** (SM-J710F/DS, SM-J710FN/DS, SM-J710FN/DD, SM-J710GN/DS):





Do not insert a memory card into the SIM card slot. If a memory card happens to be lodged in the SIM card slot, take the device to a Samsung Service Centre to remove the memory card.

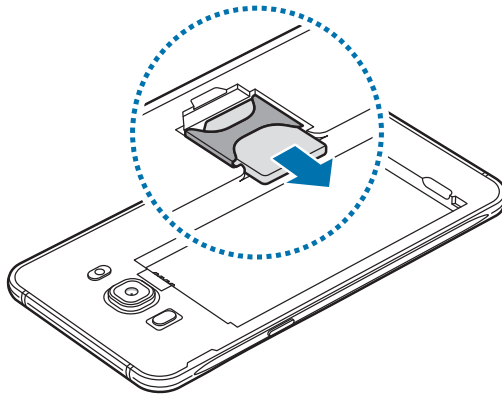
3 Replace the battery and back cover.

Removing the SIM or USIM card

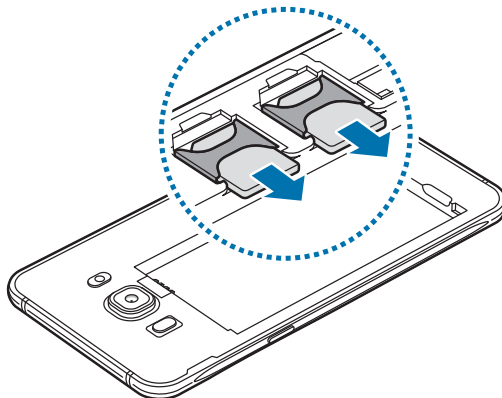
1 Remove the back cover and battery.

2 Pull out the SIM or USIM card.

► **Single SIM models:**



► **Dual SIM models:**



Using dual SIM or USIM cards (dual SIM models)

If you insert two SIM or USIM cards, you can have two phone numbers or service providers for a single device.

Activating SIM or USIM cards

On the Home screen, tap **Apps** → **Settings** → **SIM card manager**. Select a SIM or USIM card and tap the switch to activate it.

Customising SIM or USIM cards

On the Home screen, tap **Apps** → **Settings** → **SIM card manager** and select a SIM or USIM card to access the following options:

- **Icon:** Change the icon of the SIM or USIM card.
- **Name:** Change the display name of the SIM or USIM card.
- **Network mode:** Select a network type to use with the SIM or USIM card.

Setting preferred SIM or USIM cards

When two cards are activated, you can assign voice calls, messaging, and data services to specific cards.

On the Home screen, tap **Apps** → **Settings** → **SIM card manager** and set the feature preferences for your cards in **Preferred SIM card**.

Memory card (microSD card)

Installing a memory card

Your device accepts memory cards with maximum capacities of 128 GB. Depending on the memory card manufacturer and type, some memory cards may not be compatible with your device.

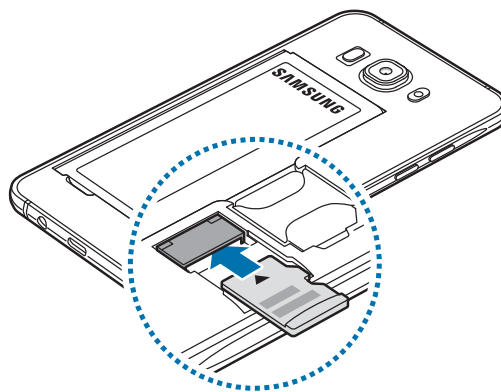


- Some memory cards may not be fully compatible with the device. Using an incompatible card may damage the device or the memory card, or corrupt the data stored in it.
- Use caution to insert the memory card right-side up.



- The device supports the FAT and the exFAT file systems for memory cards. When inserting a card formatted in a different file system, the device asks to reformat the memory card.
- Frequent writing and erasing of data shortens the lifespan of memory cards.
- When inserting a memory card into the device, the memory card's file directory appears in the **My Files** → **SD card** folder.

- 1 Remove the back cover.
- 2 Insert a memory card with the gold-coloured contacts facing downwards.



- 3 Replace the back cover.

Removing the memory card

Before removing the memory card, first unmount it for safe removal.

On the Home screen, tap **Apps** → **Settings** → **Storage** → **SD card** → **Unmount**.

- 1 Remove the back cover.
- 2 Pull out the memory card.
- 3 Replace the back cover.



Do not remove the memory card while the device is transferring or accessing information. Doing so can cause data to be lost or corrupted or damage to the memory card or device. Samsung is not responsible for losses that result from the misuse of damaged memory cards, including the loss of data.

Formatting the memory card

A memory card formatted on a computer may not be compatible with the device. Format the memory card on the device.

On the Home screen, tap **Apps** → **Settings** → **Storage** → **SD card** → **Format** → **FORMAT**.



Before formatting the memory card, remember to make backup copies of all important data stored in the memory card. The manufacturer's warranty does not cover loss of data resulting from user actions.

Turning the device on and off

Press and hold the Power key for a few seconds to turn on the device.

When you turn on your device for the first time or after performing a data reset, follow the on-screen instructions to set up your device.

To turn off the device, press and hold the Power key, and then tap **Power off**.



- If your device is frozen and unresponsive, press and hold the Power key and the Volume key down simultaneously for more than 7 seconds to restart it.
- Follow all posted warnings and directions from authorised personnel in areas where the use of wireless devices is restricted, such as aeroplanes and hospitals.

Touchscreen



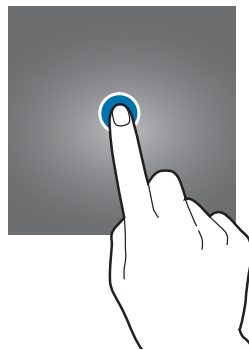
- Do not allow the touchscreen to come into contact with other electrical devices. Electrostatic discharges can cause the touchscreen to malfunction.
- To avoid damaging the touchscreen, do not tap it with anything sharp or apply excessive pressure to it with your fingertips.



- The device may not recognise touch inputs close to the edges of the screen, which are outside of the touch input area.
- Leaving the touchscreen idle for extended periods may result in afterimages (screen burn-in) or ghosting. Turn off the touchscreen when you do not use the device.
- It is recommended to use fingers when you use the touchscreen.

Tapping

To open an app, to select a menu item, to press an on-screen button, or to enter a character using the keyboard on the screen, tap it with your finger.



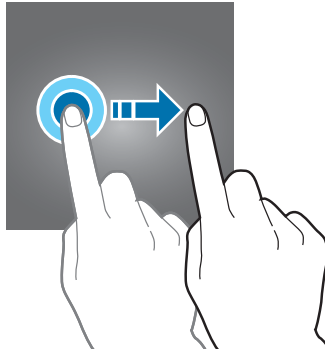
Tapping and holding

Tap and hold an item or the screen for more than 2 seconds to access available options.



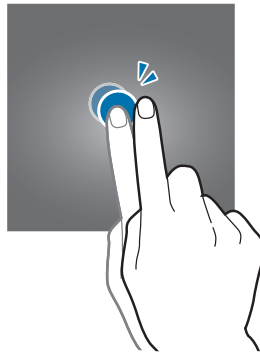
Dragging

To move an item, tap and hold it and drag it to the target position.



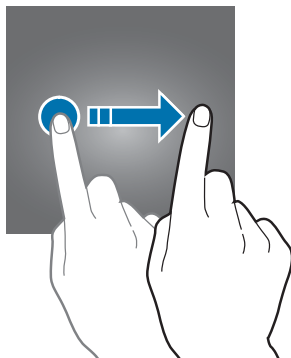
Double-tapping

Double-tap on a webpage or image to zoom in. Double-tap again to return.



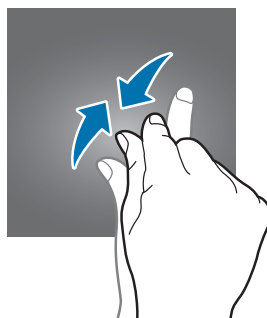
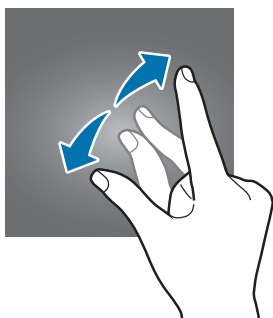
Swiping

Swipe to the left or right on the Home screen or the Apps screen to view other panels. Swipe upwards or downwards to scroll through a webpage or a list of items, such as contacts.



Spreading and pinching

Spread two fingers apart on a webpage, map, or image to zoom in a part. Pinch to zoom out.



Home screen

Home screen

The Home screen is the starting point for accessing all of the device's features. It displays widgets, shortcuts to apps, and more.

To view other panels, swipe to the left or right, or tap one of the screen indicators at the bottom of the screen.



The Home screen may appear differently depending on the region or service provider.

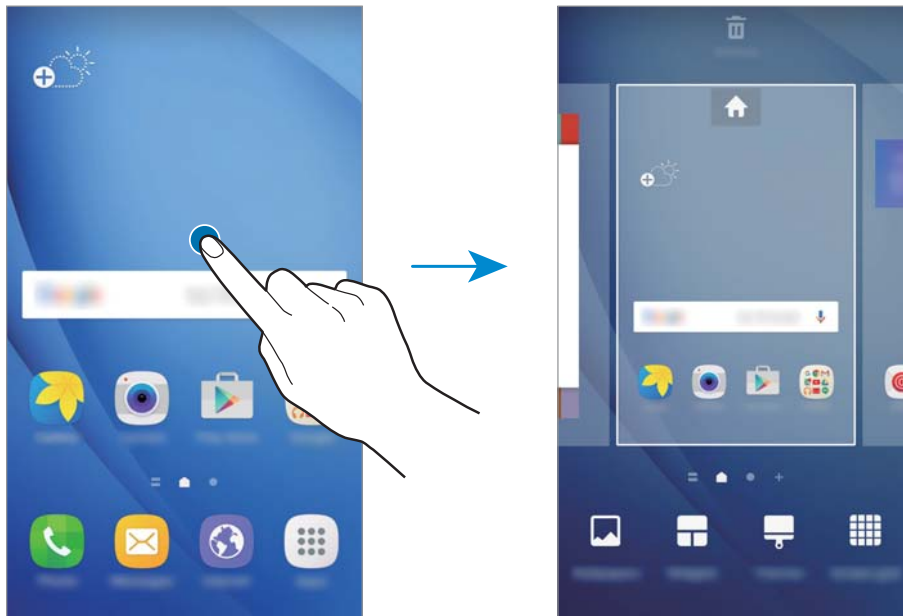


Home screen options

On the Home screen, tap **Apps** → **Settings** → **Home screen** to access the available options. Alternatively, on the Home screen, tap and hold an empty area. Customise the Home screen by adding, deleting, or rearranging Home screen panels. You can also set the Home screen wallpaper, add widgets to the Home screen, and more.

- **Wallpapers:** Change the wallpaper settings for the Home screen and the locked screen.

- **Widgets:** Add widgets to the Home screen. Widgets are small apps that launch specific app functions to provide information and convenient access on your Home screen.
- **Themes:** Change the device's theme. Visual elements of interface, such as colours, icons, and wallpapers, will change depending on the selected theme.
- **Screen grid:** Change the size of the grid to display more or less items on the Home screen and the Apps screen.



Adding items

Tap and hold an app or a folder from the Apps screen, and then drag it to the Home screen.

To add widgets, tap and hold an empty area on the Home screen, tap **Widgets**, tap and hold a widget, and then drag it to the Home screen.

Moving items

Tap and hold an item on the Home screen, and then drag it to a new location.

You can also move frequently used apps to the shortcuts area at the bottom of the Home screen.

To move the item to another panel, drag it to the side of the screen.

To move an item more easily, tap and hold an item, and drag it to **Move apps** at the top of the screen. The item will move to the panel at the top of the screen. Swipe to the left or right to move to another panel and drag the item to a new location.

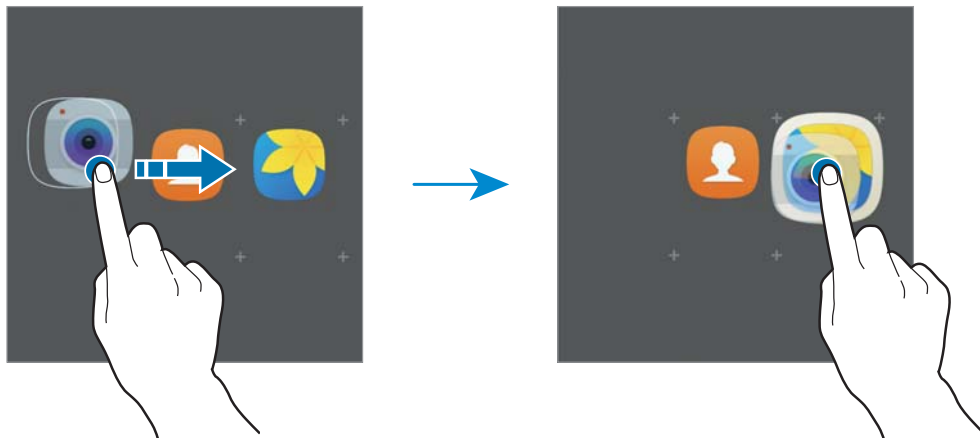
Removing items

Tap and hold an item, and then drag it to **Remove** at the top of the screen.

Creating folders

Create folders and gather similar applications to quickly access and launch apps.

- 1 On the Home screen, tap and hold an app, and then drag it over another app.
- 2 Drop the app when a folder frame appears around the apps.
A new folder containing the selected apps will be created.



- 3 Tap **Enter folder name** and enter a folder name.

To change the folder colour, tap 🎨.

To add more apps to the folder, tap ⊕, tick the apps, and then tap **ADD**. You can also add an app by dragging it to the folder on the Home screen.

To move apps from a folder to the Home screen, tap the folder, and then drag an app to the Home screen.

To delete apps in a folder, tap the folder, and then drag the app you want to delete to **Remove** at the top of the screen.

Managing panels

On the Home screen, tap and hold an empty area to add, move, or remove a panel.

To add a panel, swipe to the left, and then tap **+**.

To move a panel, tap and hold a panel preview, and then drag it to a new location.

To remove a panel, tap and hold a panel preview, and then drag it to **Remove** at the top of the screen.

To set a panel as the main Home screen, tap .

Apps screen

The Apps screen displays icons for all apps, including newly installed apps.

On the Home screen, tap **Apps** to open the Apps screen. To view other panels, swipe to the left or right, or select a screen indicator at the bottom of the screen.

Moving items



This feature may not be available depending on the region or service provider.

On the Apps screen, tap **EDIT**. Tap and hold an item and drag it to a new location.

To move the item to another panel, drag it to the side of the screen.

Creating folders

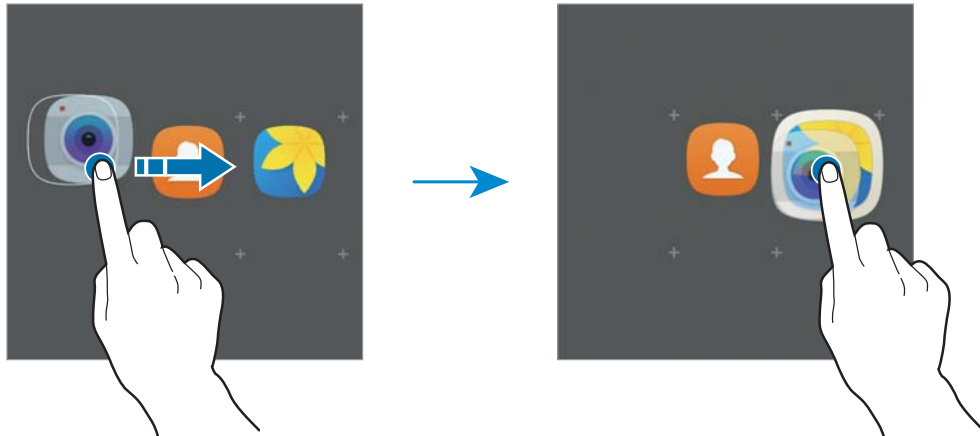
Create folders and gather similar applications to quickly access and launch apps you want.



This feature may not be available depending on the region or service provider.


- 1 On the Apps screen, tap **EDIT**.
- 2 Tap and hold an app, and then drag it over another app.


- 3 Drop the app when a folder frame appears around the apps.
A new folder containing the selected apps will be created.



- 4 Tap **Enter folder name** and enter a folder name.

To change the folder colour, tap .

To add more apps to the folder, tap , tick the apps, and then tap **ADD**. You can also add an app by dragging it to the folder on the Apps screen.

To delete a folder, select a folder with . Only the folder will be deleted. The folder's apps will be relocated to the Apps screen.

Rearranging items

You can rearrange items in alphabetical order on the Apps screen.

On the Apps screen, tap **A-Z** → **SAVE**.

Searching for items

You can search for items on the Apps screen.

On the Apps screen, tap **SEARCH** and enter characters. The device will search for and display the items containing the characters you entered.

Indicator icons

Indicator icons appear on the status bar at the top of the screen. The icons listed in the table below are most common.



The status bar may not appear at the top of the screen in some apps. To display the status bar, drag down from the top of the screen.

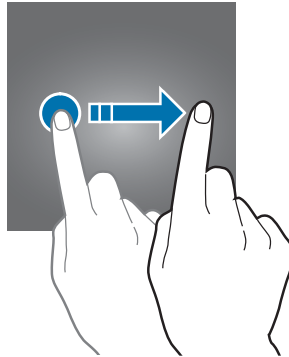
Icon	Meaning
	No signal
	Signal strength
	Currently accessing SIM or USIM card (dual SIM models)
	Roaming (outside of normal service area)
	GPRS network connected
	EDGE network connected
	UMTS network connected
	HSDPA network connected
	HSPA+ network connected
	LTE network connected (LTE-enabled models)
	Wi-Fi connected
	Bluetooth feature activated
	GPS activated
	Call in progress
	Missed call
	New text or multimedia message
	Alarm activated
	Mute mode activated
	Vibration mode activated
	Flight mode activated
	Error occurred or caution required
	Battery power level

Lock screen

Pressing the Power key turns off the screen and locks it. Also, the screen turns off and automatically locks if the device is not used for a specified period.

The screen is locked with **Swipe**, the default screen lock method.

Press the Power key or the Home key and swipe in any direction to unlock the screen.



To change the screen lock method, on the Apps screen, tap **Settings** → **Lock screen and security** → **Screen lock type**, and then select a method.

When you set a pattern, PIN, or password for the screen lock method, you can protect your personal information by preventing others from accessing your device. After setting the screen lock method, the device will require an unlock code whenever unlocking it.

- **Swipe:** Swipe in any direction on the screen to unlock it.
- **Pattern:** Draw a pattern with four or more dots to unlock the screen.
- **PIN:** Enter a PIN with at least four numbers to unlock the screen.
- **Password:** Enter a password with at least four characters, numbers, or symbols to unlock the screen.
- **None:** Do not set a screen lock method.



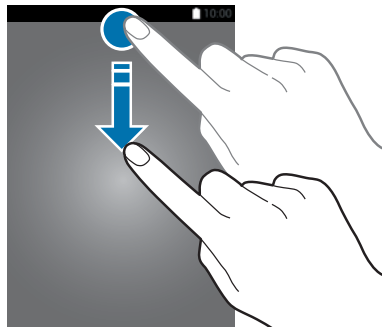
- If the unlock code is forgotten, take the device to a Samsung Service Centre to reset it.
- You can set your device to perform a factory data reset if you enter the unlock code incorrectly several times in a row and reach the attempt limit. On the Apps screen, tap **Settings** → **Lock screen and security** → **Secure lock settings** and tap the **Auto factory reset** switch to activate it.

Notification panel

Using the notification panel

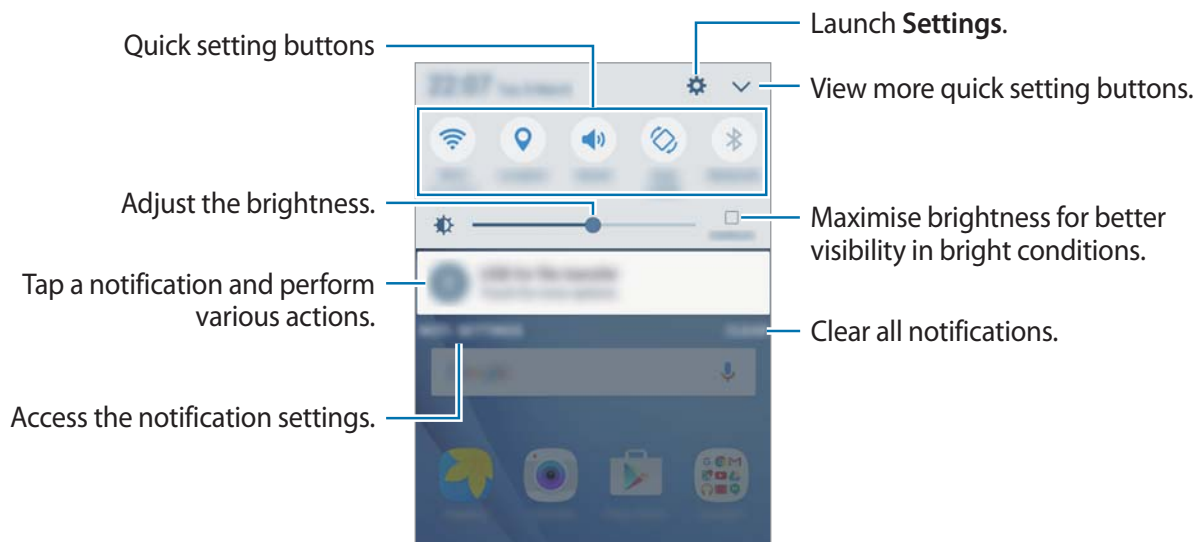
When you receive new notifications, such as messages or missed calls, indicator icons appear on the status bar. To see more information about the icons, open the notification panel and view the details.

To open the notification panel, drag the status bar downwards. To close the notification panel, swipe upwards on the screen.

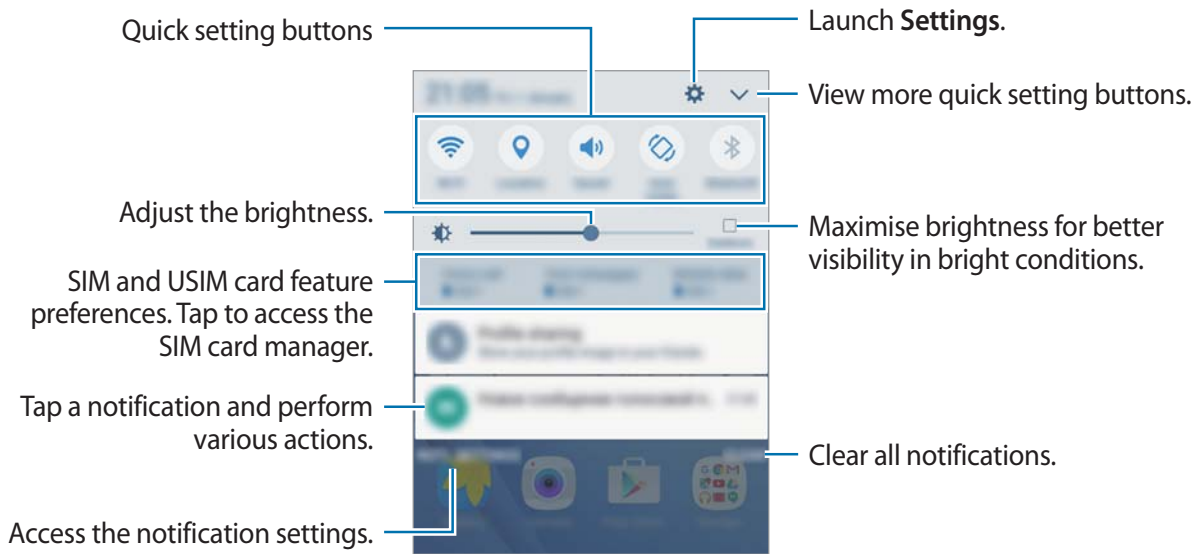


You can use the following functions on the notification panel.

► Single SIM models:



► Dual SIM models:



Using quick setting buttons

Tap quick setting buttons to activate some features. Swipe to the left or right on the buttons area, or tap to view more buttons. To view more detailed settings, tap and hold a button. To rearrange buttons, tap → **EDIT**, tap and hold a button, and then drag it to another location.

S Finder

Search for a wide variety of content with a keyword.

Searching for content on the device

Open the notification panel and tap → **S Finder**.

Enter a keyword in the search field or tap and say a keyword.

To get more refined results, tap **Filter** under the search field, and then select filter details.

Setting search categories

You can set search categories to search for content in specific search fields.

Tap **MORE** → **Select search locations** and select categories.

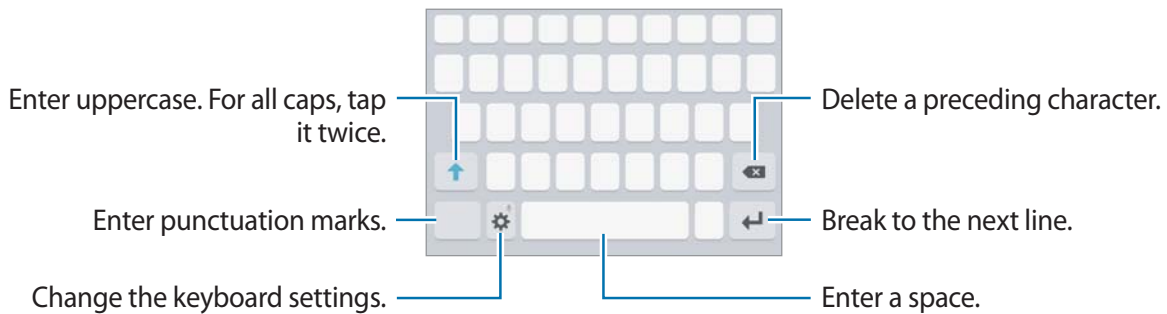
Entering text

Keyboard layout


A keyboard appears automatically when you enter text to send messages, create memos, and more.



Text entry is not supported in some languages. To enter text, you must change the input language to one of the supported languages.



Changing the input language

Tap  → **Add input languages**, and then select the languages to use. When you select two or more languages, you can switch between the input languages by swiping to the left or right on the space key.



Changing the keyboard layout

Tap , select a language under **Languages and types**, and then select a keyboard layout to use.

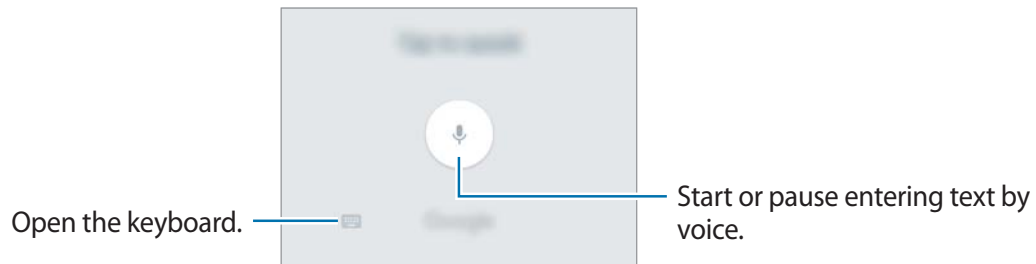




On **3x4 keyboard**, a key has three or four characters. To enter a character, tap the corresponding key repeatedly until the desired character appears.

Additional keyboard functions



Tap and hold  to use various functions. Other icons may appear instead of the  icon depending on the last function that was used.

-  : Enter text by voice.



-  : Enter emoticons.
-  : Change the keyboard settings.

Copying and pasting

- 1 Tap and hold over text.
- 2 Drag  or  to select the desired text, or tap **Select all** to select all text.
- 3 Tap **Copy** or **Cut**.
The selected text is copied to the clipboard.
- 4 Tap and hold where the text is to be inserted and tap **Paste**.

Screen capture

Capture a screenshot while using the device.


Press and hold the Home key and the Power key simultaneously. You can view captured images in **Gallery**.




It is not possible to capture a screenshot while using some apps and features.

Opening apps

On the Home screen or the Apps screen, select an app icon to open it.

To open an app from the list of recently used apps, tap  and select a recent app window.

Closing an app

Tap  and drag a recent app window to the left or right to close it. To close all running apps, tap **CLOSE ALL**.

Samsung account

Introduction

Your Samsung account is an integrated account service that allows you to use a variety of Samsung services provided by mobile devices, TVs, and the Samsung website. Once your Samsung account has been registered, you can use apps provided by Samsung, without signing in to your account.

Create your Samsung account with your email address.

To check the list of services that can be used with your Samsung account, visit account.samsung.com. For more information on Samsung accounts, open the Apps screen and tap **Settings** → **Accounts** → **Samsung account** → **Help**.

Registering your Samsung account

Registering a new Samsung account

If you do not have a Samsung account, you should create one.

- 1 On the Apps screen, tap **Settings** → **Accounts** → **Add account**.
- 2 Tap **Samsung account** → **CREATE ACCOUNT**.
- 3 Follow the on-screen instructions to complete creating your account.

Registering an existing Samsung account

If you already have a Samsung account, register it to the device.

1 On the Apps screen, tap **Settings** → **Accounts** → **Add account**.

2 Tap **Samsung account**.

3 Enter your email address and password, and then tap **SIGN IN**.

If you forget your account information, tap **Forgotten your ID or password?** You can find your account information when you enter the required information and security code displayed that is on the screen.

Removing your Samsung account

When you remove your registered Samsung account from the device, your data, such as contacts or events, will also be removed.

1 On the Apps screen, tap **Settings** → **Accounts**.

2 Tap **Samsung account** and tap the account to remove.

3 Tap **MORE** → **Remove account** → **REMOVE ACCOUNT**.

4 Enter your Samsung account password and tap **CONFIRM**.

5 Tap **REMOVE ACCOUNT**.

Transferring data from your previous device

You can transfer data from a previous device to your device via Samsung Smart Switch.

The following versions of Samsung Smart Switch are available.

- Mobile version: Transfer data between mobile devices. You can download the app from **Galaxy Apps** or **Play Store**.
- Computer version: Transfer data between your device and a computer. You can download the app from www.samsung.com/smartswitch.



- Samsung Smart Switch is not supported on some devices or computers.
- Limitations apply. Visit www.samsung.com/smartswitch for details. Samsung takes copyright seriously. Only transfer content that you own or have the right to transfer.

Transferring data wirelessly

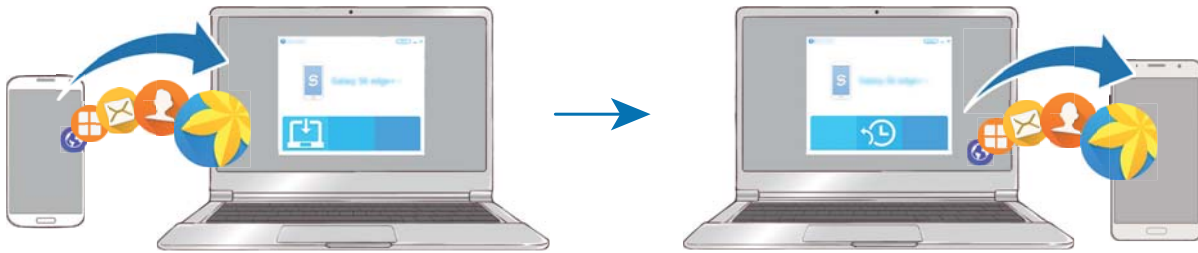
Transfer data from your previous device to your device.




- 1 On both devices, download and install Smart Switch from **Galaxy Apps** or **Play Store**.
- 2 Place the devices near each other.
- 3 Launch **Smart Switch** on both devices.
- 4 On your device, select the previous device type from the list and tap **START**.
- 5 Follow the on-screen instructions to transfer data from your previous device.

Transferring backup data from a computer

Back up data from your previous device to a computer and import the data to your device.



- 1 On the computer, visit www.samsung.com/smartswitch to download Smart Switch.
- 2 On the computer, launch Smart Switch.
-  If your previous device is not a Samsung device, back up data to a computer using a program provided by the device's manufacturer. Then, skip to the fifth step.
- 3 Connect your previous device to the computer using the USB cable.
- 4 On the computer, follow the on-screen instructions to back up data from the device. Then, disconnect your previous device from the computer.
- 5 Connect your device to the computer using the USB cable.
- 6 On the computer, follow the on-screen instructions to transfer data to your device.

Device and data management

Connecting the device to a computer for data transfer

Move audio, video, image, or other types of files from the device to the computer, or vice versa.



Do not disconnect the USB cable from the device when you are transferring files. Doing so may cause data loss or device damage.



The devices may not connect properly if they are connected via a USB hub. Directly connect the device to the computer's USB port.

- 1 Connect the device to the computer using the USB cable.
- 2 Open the notification panel, and then tap **USB for file transfer** → **Transferring media files**.
If the computer cannot recognise your device, tap **Transferring images**.
- 3 Tap **ALLOW** to permit the computer to access your device's data.
When the computer recognises your device, the device will appear in My PC.
- 4 Transfer files between your device and the computer.

Updating the device

The device can be updated to the latest software.

Updating over the air

The device can be directly updated to the latest software by the firmware over-the-air (FOTA) service.

On the Apps screen, tap **Settings** → **About device** → **Download updates manually**.



When you tap the **Download update automatically** switch to activate it, updates will be downloaded when the device is connected to a Wi-Fi network.

Updating with Smart Switch

Connect the device to a computer and update the device to the latest software.

- 1 On the computer, visit www.samsung.com/smartswitch to download and install Smart Switch.
- 2 On the computer, launch Smart Switch.
- 3 Connect the device to the computer using a USB cable.
- 4 If a software update is available, follow the on-screen instructions to update the device.



- Do not turn off the computer or disconnect the USB cable while the device is updating.
- While updating the device, do not connect other media devices to the computer. Doing so may interfere with the update process. Before updating, disconnect all other media devices from the computer.

Backing up and restoring data

Keep your personal information, app data, and settings safe on your device. You can back up your sensitive information to a backup account and access it later. You must sign in to your Google or Samsung account to back up or restore data. Refer to [Samsung account](#) and [Accounts](#) for more information.

Using a Samsung account

On the Apps screen, tap **Settings** → **Backup and reset** → **Back up my data** for the Samsung account, tap the switches next to the items you want to back up to activate them, and then tap **BACK UP NOW**.

To set the device to automatically back up data, tap the **Auto back up** switch to activate it.

To restore data using a Samsung account, tap **Restore**. Current data will be deleted from the device to restore the selected items.

Using a Google account

On the Apps screen, tap **Settings** → **Backup and reset** → **Back up my data** for the Google account, and then tap the switch to activate it. Tap **Backup account** and select an account as the backup account.

To restore data using a Google account, tap the **Automatic restore** switch to activate it. When you reinstall apps, backed up settings and data will be restored.

Performing a data reset

Delete all settings and data on the device. Before performing a factory data reset, ensure you back up all important data stored on the device. Refer to [Backing up and restoring data](#) for more information.

On the Apps screen, tap **Settings** → **Backup and reset** → **Factory data reset** → **RESET DEVICE** → **ERASE EVERYTHING**. The device automatically restarts.

Sharing features

Share content by using various sharing options. The following actions are an example of sharing images.



You may incur additional charges when sharing files via the mobile network.

- 1 Tap **Gallery** on the Apps screen.
- 2 Select an image.
- 3 Tap **Share** and select a sharing method, such as Bluetooth and email.

You can also use the following options:

- **Simple sharing:** Share content with your contacts. To use this feature, your phone number must be verified.



- This feature may not be available depending on the region or service provider.
- If the recipients have not verified their phone numbers or if their devices do not support the feature, a link to the files will be sent to them via text message. The link will expire after a certain period.

- **Print:** Print content using the printer plug-ins installed on the device.

- 4 Follow the on-screen instructions to share the image with others.

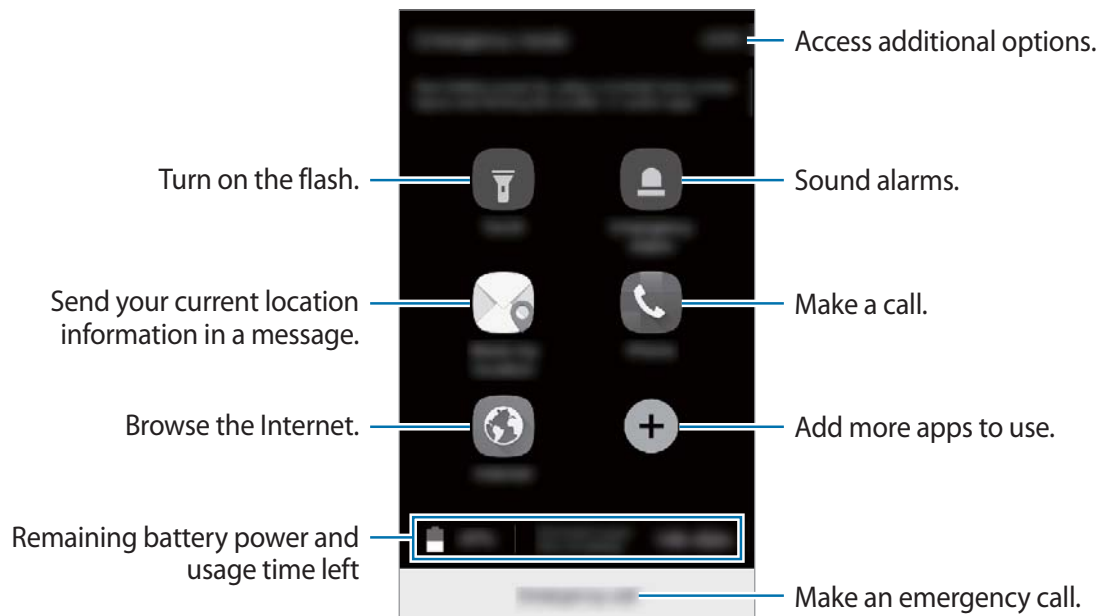
When the image is sent to the recipients' devices, a notification will appear on their devices.

Tap the notification to view or download the image.

Emergency mode

Emergency mode changes the screen to grey tones to reduce battery consumption. Some apps and functions will be restricted. In emergency mode, you can make an emergency call, send your current location information to others, sound an emergency alarm, and more.

Press and hold the Power key, and then tap **Emergency mode**.



The usage time left shows the time remaining before the battery power runs out. Usage time left may vary depending on your device settings and operating conditions.

Deactivating emergency mode

To deactivate emergency mode, tap **MORE** → **Disable Emergency mode**. Alternatively, press and hold the Power key, and then tap **Emergency mode**.

Applications

Installing or uninstalling apps

Galaxy Apps

Purchase and download apps. You can download apps that are specialised for Samsung Galaxy devices.

Tap **Samsung** → **Galaxy Apps** on the Apps screen.



- This app may not be available depending on the region or service provider.
- This app may appear on the Apps screen depending on the region or service provider.

Installing apps

Browse apps by category or tap **SEARCH** to search for a keyword.

Select an app to view information about it. To download free apps, tap **INSTALL**. To purchase and download apps where charges apply, tap the price and follow the on-screen instructions.



To change the auto update settings, tap **MORE** → **Settings** → **Auto update apps**, and then select an option.

Play Store

Purchase and download apps.

Tap **Play Store** on the Apps screen.

Installing apps

Browse apps by category or search for apps by keyword.


Select an app to view information about it. To download free apps, tap **INSTALL**. To purchase and download apps where charges apply, tap the price and follow the on-screen instructions.



To change the auto update settings, tap **≡** → **Settings** → **Auto-update apps**, and then select an option.

Managing apps

Uninstalling or disabling apps

On the Apps screen, tap **EDIT**. The  icon appears on the apps that you can disable or uninstall. Select an app and tap **DISABLE** or **OK**. Alternatively, on the Apps screen, tap **Settings** → **Applications** → **Application manager**, select an app, and then tap **DISABLE** or **UNINSTALL**.

- **DISABLE**: Disable selected default apps that cannot be uninstalled from the device.
- **UNINSTALL**: Uninstall downloaded apps.

Enabling apps

On the Apps screen, tap **Settings** → **Applications** → **Application manager** →  → **Disabled**, select an app, and then tap **ENABLE**.

Setting app permissions

For some apps to operate properly, they may need permission to access or use information on your device. When you open an app, a pop-up window may appear and request access to certain features or information. Tap **ALLOW** on the pop-up window to grant permissions to the app.

To view your app permission settings, open the Apps screen and tap **Settings** → **Applications** → **Application manager**. Select an app and tap **Permissions**. You can view the app's permissions list and change its permissions.

To view or change app permission settings by permission category, open the Apps screen, tap **Settings** → **Privacy and safety** → **App permissions**. Select an item and tap the switches next to apps to grant permissions.






If you do not grant permissions to apps, the basic features of the apps may not function properly.

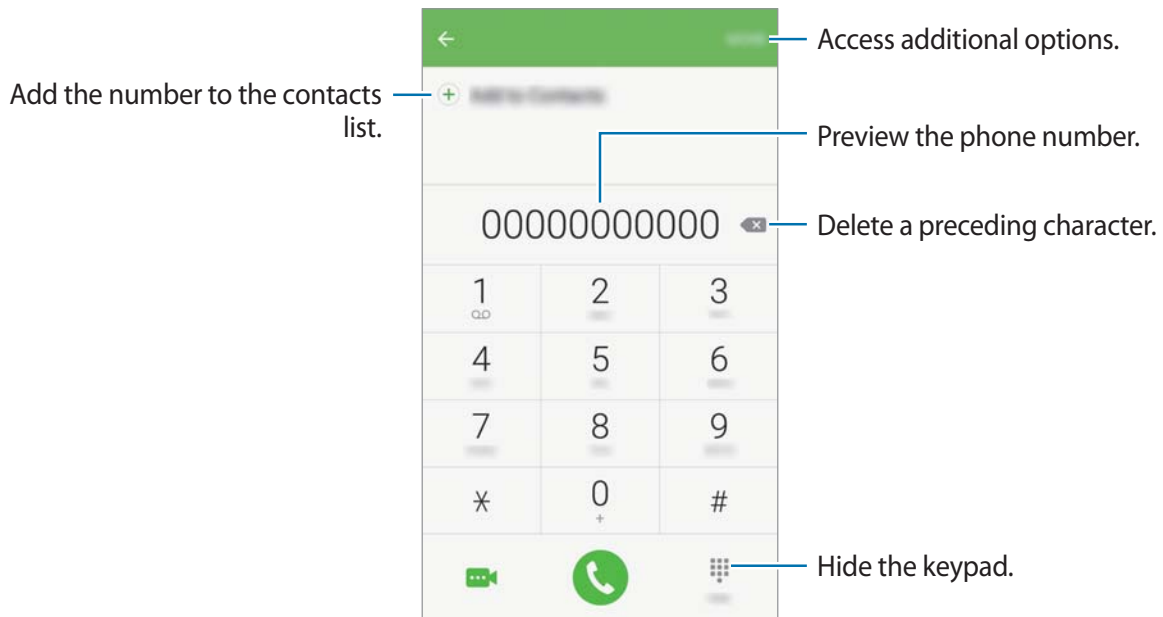
Phone



Introduction

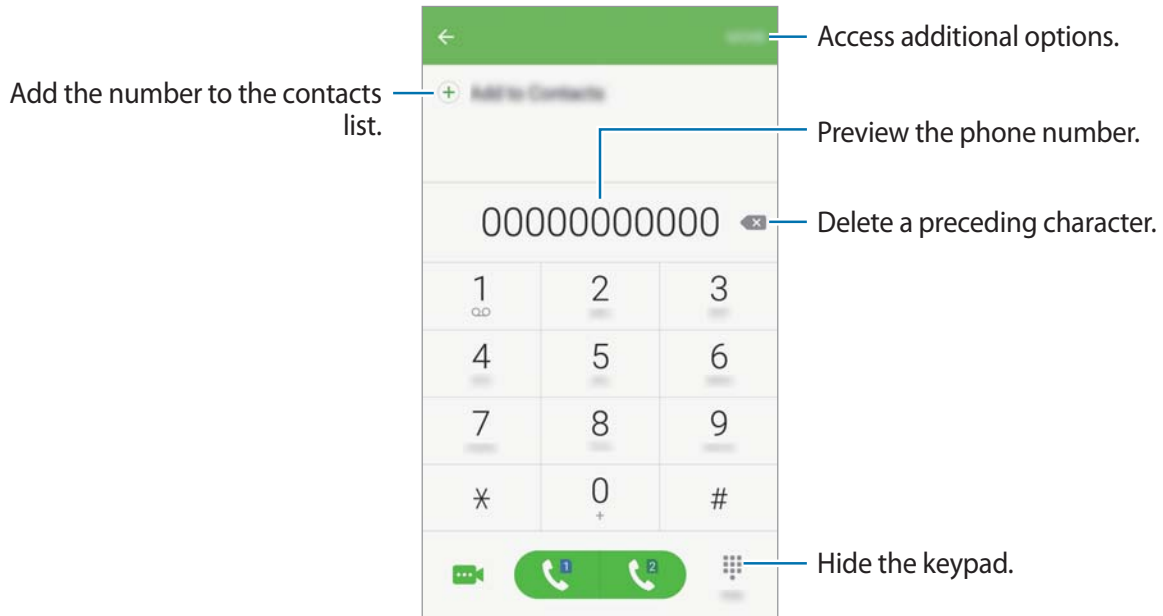
Make or answer voice and video calls.

Making calls

- 1 Tap **Phone** on the Apps screen.
- 2 Enter a phone number.
If the keypad does not appear on the screen, tap  to open the keypad.
- 3 ► **Single SIM models:** Tap  to make a voice call, or tap  to make a video call.



► **Dual SIM models:** Tap  or  to make a voice call, or tap  to make a video call.



Using speed dial

Set speed dial numbers to quickly make calls.

To set a number to speed dial, tap **MORE** → **Speed dial**, select a speed dial number, and then select a contact.

To make a call, tap and hold a speed dial number on the keypad. For speed dial numbers 10 and up, tap the first digit(s) of the number, and then tap and hold the last digit.

For example, if you set the number **123** as a speed dial number, tap **1**, tap **2**, and then tap and hold **3**.





Making calls from the locked screen

On the locked screen, drag  outside the large circle.

Making calls from call logs or contacts list

Tap **LOG** or **CONTACTS**, and then swipe to the right on a contact or a phone number to make a call.

Making an international call

- 1 Tap  to open the keypad if the keypad does not appear on the screen.
- 2 Tap and hold **0** until the + sign appears.
- 3
 - ▶ **Single SIM models:** Enter the country code, area code, and phone number, and then tap .
 - ▶ **Dual SIM models:** Enter the country code, area code, and phone number, and then tap  or .

Receiving calls


Answering a call

When a call comes in, drag  outside the large circle.


Rejecting a call

When a call comes in, drag  outside the large circle.

To send a message when rejecting an incoming call, drag the reject message bar upwards.

To create various rejection messages, open the Apps screen and tap **Phone** → **MORE** → **Settings** → **Call blocking** → **Call-reject messages**, enter a message, and then tap .

Missed calls

If a call is missed, the  icon appears on the status bar. Open the notification panel to view the list of missed calls. Alternatively, on the Apps screen, tap **Phone** → **LOG** to view missed calls.

Blocking phone numbers

Block calls from specific numbers added to your block list.

1 On the Apps screen, tap **Phone** → **MORE** → **Settings** → **Call blocking** → **Block list**.

2 Tap **LOG** or **CONTACTS** to select contacts and tap .

To manually enter a number, tap **Enter phone number**, and then enter a phone number.

When blocked numbers try to contact you, you will not receive notifications. The calls will be logged in the call log.



You can also block incoming calls from people that do not show their caller ID. Tap the **Block anonymous calls** switch to activate the feature.

Options during calls




Some features of this app may not be supported by some devices.

During a voice call


The following actions are available:

- **MORE:** Access additional options.
- **HOLD:** Hold a call. Tap **RESUME CALL** to retrieve the held call.
- **Add call:** Dial a second call.
- **Record:** Record a call conversation.
- **Extra volume:** Increase the volume.
- **Bluetooth:** Switch to a Bluetooth headset if it is connected to the device.
- **Speaker:** Activate or deactivate the speakerphone. When using the speakerphone, keep the device away from your ears.
- **Keypad / Hide:** Open or close the keypad.
- **Mute:** Turn off the microphone so that the other party cannot hear you.
- **Email:** Send an email.

- **Message:** Send a message.
- **Internet:** Browse webpages.
- **Contacts:** Open the contacts list.
- **S Planner:** Open the calendar.
- **Memo:** Create a memo.
- : End the current call.

During a video call

Tap the screen to use the following options:

- **MORE:** Access additional options.
- **Switch :** Switch between the front and rear cameras.
- : End the current call.
- **Mute :** Turn off the microphone so that the other party cannot hear you.


Contacts

Introduction




Create new contacts or manage contacts on the device.

Adding contacts


Creating contacts manually

- 1 Tap **Contacts** on the Apps screen.
- 2 Tap  and select a storage location.

3 Enter contact information.

-  : Add an image.
-  /  : Add or delete a contact field.

4 Tap **SAVE**.

To add a phone number to the contacts list from the keypad, open the Apps screen and tap **Phone**. If the keypad does not appear on the screen, tap  to open the keypad. Enter the number and tap **Add to Contacts**.

To add a phone number to the contacts list from received calls, open the Apps screen and tap **Phone** → **LOG** → a contact → **CREATE CONTACT**.

Importing contacts

Import contacts from storage services to your device.

On the Apps screen, tap **Contacts** → **MORE** → **Settings** → **Import/Export contacts** → **IMPORT** and select an import option.






Searching for contacts

On the Apps screen, tap **Contacts**.

Use one of the following search methods:

- Scroll up or down the contacts list.
- Drag a finger along the index at the right side of the contacts list to scroll through it quickly.
- Tap the search field at the top of the contacts list and enter search criteria.

Once a contact is selected, take one of the following actions:

-  : Add to favourite contacts.
-  /  : Make a voice or video call.
-  : Compose a message.
-  : Compose an email.

Sharing profile

Share your profile information, such as your photo and status message, with others using the profile sharing feature.



- This feature may not be available depending on the region or service provider.
- This feature is only available for contacts who have activated the profile sharing feature on their device.

On the Apps screen, tap **Contacts** → your profile → **Profile sharing**, and then tap the switch to activate it. To use this feature, your phone number must be verified. You can view your contacts' updated profile information in **Contacts**.

To set additional items to share, tap **Shared profile info** and select items.

To set a contact group to share your profile with, tap **Share with** and select an option.

Sharing contacts

You can share contacts with others by using various sharing options.

- 1 Tap **Contacts** on the Apps screen.
- 2 Tap **MORE** → **Share**.
- 3 Tick contacts and tap **SHARE**.
- 4 Select a sharing method.

Messages


Introduction

Send and view messages by conversation.

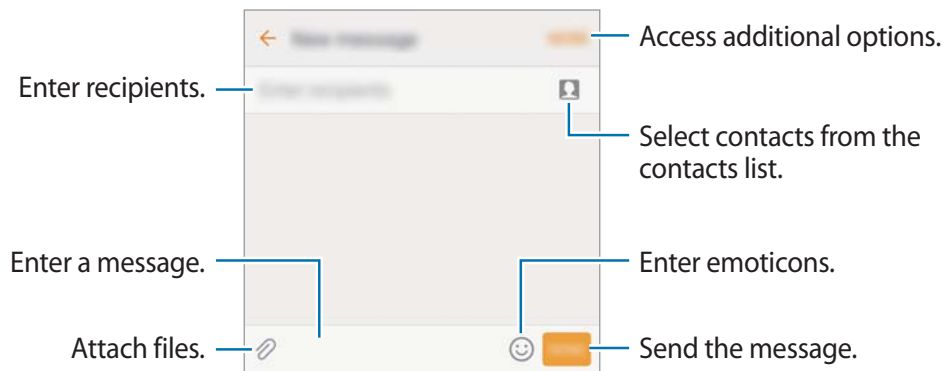
Sending messages



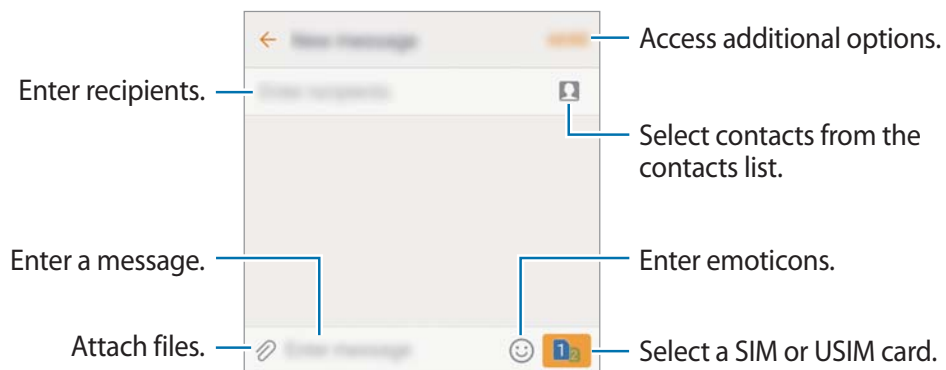
You may incur additional charges for sending messages when you are roaming.


- 1 Tap **Messages** on the Apps screen.
- 2 Tap .
- 3 Add recipients and enter a message.

► **Single SIM models:**



► **Dual SIM models:**



- 4 ► **Single SIM models:** Tap **SEND** to send the message.
- **Dual SIM models:** Tap  or  to send the message.

Viewing messages

Messages are grouped into message threads by contact.




You may incur additional charges for receiving messages when you are roaming.

- 1 Tap **Messages** on the Apps screen.
- 2 On the messages list, select a contact.
- 3 View your conversation.

Blocking unwanted messages

Block messages from specific numbers or messages that contain phrases added to your block list.

- 1 Tap **Messages** on the Apps screen.
- 2 Tap **MORE** → **Settings** → **Block messages**.
- 3 Tap **Block list**.
To add phrases to block, tap **Blocked phrases**.
- 4 Tap **INBOX** or **CONTACTS** to select contacts and tap .

To manually enter a number, tap **Enter number**, and then enter a phone number.

When you receive messages from the blocked numbers or messages including blocked phrases, you will not be notified. To view blocked messages, tap **MORE** → **Settings** → **Block messages** → **Blocked messages**.

Setting the message notification

You can change notification sound, display options, and more.

- 1 Tap **Messages** on the Apps screen.
- 2 Tap **MORE** → **Settings** → **Notifications**, and then tap the switch to activate it.
- 3 Change the notification settings.
 - **Notification sound**: Change the notification sound.
 - **Vibrate**: Set the device to vibrate when you receive messages.
 - **Pop-up display**: Set the device to display messages in pop-up windows.
 - **Preview message**: Set the device to display message content on the locked screen and in pop-up windows.

Setting a message reminder

You can set an alert at an interval to let you know that you have unchecked notifications. If this feature is not activated, open the Apps screen, tap **Settings** → **Accessibility** → **Notification reminder**, and then tap the switch to activate it. Then, tap the **Messages** switch to activate it.

Internet

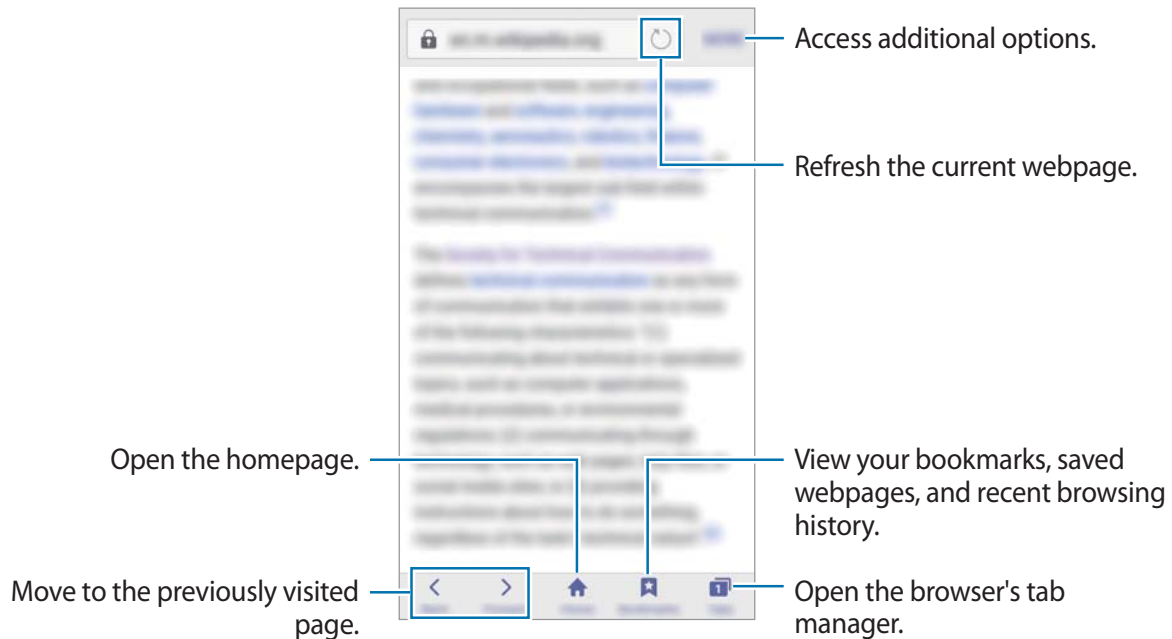
Browse the Internet to search for information and bookmark your favourite webpages to access them conveniently.



This app may appear on the Apps screen depending on the region or service provider.

- 1 Tap **Samsung** → **Internet** on the Apps screen.
- 2 Tap the address field.
- 3 Enter the web address or a keyword, and then tap **Go**.

To view the toolbars, drag your finger downwards slightly on the screen.



Using secret mode

In secret mode, you can separately save and manage open tabs, bookmarks, and saved pages. You can lock secret mode using a password.

Activating secret mode

In the toolbar at the bottom of the screen, tap **Tabs** → **ENABLE SECRET**. If you are using this feature for the first time, set whether to use a password for secret mode.



- In secret mode, you cannot use some features, such as screen capture.
- In secret mode, the device will change the colour of the toolbars.

Changing security settings

You can change your password or the lock method.

Tap **MORE** → **Settings** → **Privacy** → **Secret mode security** → **Change password**.

Deactivating secret mode

In the toolbar at the bottom of the screen, tap **Tabs** → **DISABLE SECRET**. Alternatively, close the Internet app.

Email

Setting up email accounts

Set up an email account when opening **Email** for the first time.




This app may appear on the Apps screen depending on the region or service provider.

- 1 Tap **Samsung** → **Email** on the Apps screen.
- 2 Enter the email address and password, and then tap **SIGN IN**.
To manually register a company email account, tap **MANUAL SETUP**.
- 3 Follow the on-screen instructions to complete the setup.

To set up another email account, tap **MORE** → **Settings** → **Add account**.

If you have more than one email account, you can set one as the default account. Tap **MORE** → **Settings** → **MORE** → **Set default account**.

Sending emails

- 1 Tap  to compose an email.
- 2 Add recipients and enter an email text.
- 3 Tap **SEND** to send the mail.

Reading emails

When **Email** is open, the device will automatically retrieve new emails. To manually retrieve emails, swipe downwards on the screen.

Tap an email on the screen to read it.



If email syncing is disabled, new emails cannot be retrieved. To enable email syncing, tap **MORE** → **Settings** → your account name, and then tap the **Sync account** switch to activate it.

Camera

Introduction

Take photos and record videos using various modes and settings.

Basic shooting




You can take photos or record videos. View your photos and videos in **Gallery**.

Tap **Camera** on the Apps screen.

Camera etiquette

- Do not take photos or record videos of other people without their permission.
- Do not take photos or record videos where legally prohibited.
- Do not take photos or record videos in places where you may violate other people's privacy.

Taking photos or recording videos

- 1 Tap the image on the preview screen where the camera should focus.
- 2 Tap  to take a photo or tap  to record a video.
 - Spread two fingers apart on the screen to zoom in, and pinch to zoom out.
 - To adjust the brightness of photos or videos, tap the screen. When the adjustment bar appears, drag the adjustment bar towards **+** or **-**.
 - To capture an image from the video while recording, tap **Capture**.
 - To change the focus while recording a video, tap where you want to focus. To focus on the centre of the screen, tap .



On the preview screen, swipe to the right to access the list of shooting modes. Or, swipe to the left to view photos and videos you have captured.



- The preview screen may vary depending on the shooting mode and which camera is being used.
- The camera automatically shuts off when unused.
- Make sure that the lens is clean. Otherwise, the device may not work properly in some modes that require high resolutions.
- The front camera features a wide-angle lens. Minor distortion may occur in wide-angle photos and does not indicate device performance problems.

Launching Camera on the locked screen

To quickly take photos, launch **Camera** on the locked screen.

On the locked screen, drag  outside the large circle.



- This feature may not be available depending on the region or service provider.
- Some camera features are not available when you launch **Camera** from the locked screen while the security features are activated.

Launching Camera quickly

Press the Home key twice quickly to launch **Camera**.



Some camera features are not available when you launch **Camera** from the locked screen or when the screen is turned off while the security features are activated.

Locking the focus and exposure

Strong light/dark contrast and the subject being outside the auto focus area may make it difficult to achieve an appropriate exposure. Lock the focus or exposure and then take a photo. Tap and hold the area to focus, the AF/AE frame will appear on the area and the focus and exposure setting will be locked. The setting remains locked even after you take a photo.



This feature is only available in some shooting modes.

Customising shooting modes

On the preview screen, tap **MODE** and select a mode.

To view information for each mode, tap **INFO**.

To rearrange modes, tap and hold a mode icon, and then drag it to a new location.


Auto mode


Auto mode allows the camera to evaluate the surroundings and determine the ideal mode for the photo.

On the preview screen, tap **MODE** → **Auto**.

Pro mode

Take photos while manually adjusting various shooting options, such as exposure value and ISO value.

On the preview screen, tap **MODE** → **Pro**. Select options and customise the settings, and then tap  to take a photo.

- **WB**: Select an appropriate white balance, so images have a true-to-life colour range.
- **ISO**: Select an ISO value. This controls camera light sensitivity. Low values are for stationary or brightly lit objects. Higher values are for fast-moving or poorly lit objects. However, higher ISO settings can result in noise in photos.
- : Change the exposure value. This determines how much light the camera's sensor receives. For low-light situations, use a higher exposure.

Panorama

Take a series of photos horizontally or vertically and then stitch them together to create a wide scene.

On the preview screen, tap **MODE** → **Panorama**.



To get the best shots using panorama mode, follow these tips:

- Move the camera slowly in one direction.
- Keep the image within the frame on the camera's viewfinder.
- Avoid taking photos of indistinct backgrounds, such as an empty sky or a plain wall.

Continuous shot

Take a series of photos of moving subjects.

On the preview screen, tap **MODE** → **Continuous shot**.


Tap and hold  to take several photos continuously.

Beauty face

Take a photo with lightened faces for gentler images.

On the preview screen, tap **MODE** → **Beauty face**.

Sound & shot

Take a photo with sound. The device identifies the photos with  in **Gallery**.

On the preview screen, tap **MODE** → **Sound & shot**.

Sports

Take a photo of fast-moving subjects.

On the preview screen, tap **MODE** → **Sports**.

HDR (Rich tone)

Take photos with rich colours and reproduce details even in bright and dark areas.

On the preview screen, tap **MODE** → **HDR (Rich tone)**.



This feature may not be supported by some devices.



Without effect



With effect

Night

Take a photo in low-light conditions, without using the flash.



On the preview screen, tap **MODE** → **Night**.



This feature may not be supported by some devices.


Selfie

Take self-portraits with the front camera. You can preview various beauty effects on the screen.

- 1 On the preview screen, tap  to switch to the front camera for self-portraits.
- 2 Tap **MODE** → **Selfie**.
- 3 Face the front camera lens.
- 4 When the device detects your face, tap the screen to take a photo of yourself.
To take a photo using your palm, tap  and tap the **Gesture control** switch to activate it. Show your palm to the front camera. After recognising your palm, the device will take a photo after two seconds.

Using the selfie flash

When taking self-portraits with the front camera in low-light situations, the touchscreen can serve as a flash.


On the preview screen, tap  repeatedly until you reach **On**. When you take a photo, the touchscreen will flash.

Applying beauty effects

You can apply the spotlight effect or modify facial features, such as your skin tone or face shape, before taking self-portraits.





This feature is available only in **Selfie** mode.

- 1 On the preview screen, tap .
- 2 Select the options below to apply beauty effects to your face on the preview screen and take a photo of yourself.
 - **Skin tone:** Make your skin appear brighter and clearer.
 - **Slim Face:** Adjust the face shape and make your face appear slimmer.
 - **Large eyes:** Make your eyes appear bigger.

Wide selfie

Take a wide self-portrait to include more people in the photo and avoid leaving people out.




- 1 On the preview screen, tap  to switch to the front camera for self-portraits.
- 2 Tap **MODE** → **Wide selfie**.
- 3 Face the front camera lens.
- 4 When the device detects your face, tap the screen to take a photo of yourself.
To take a photo using your palm, tap  and tap the **Gesture control** switch to activate it. Show your palm to the front camera. After recognising your palm, the device will take a photo after two seconds.
- 5 Slowly swivel the device left and then right or vice versa to take a wide self-portrait.
The device will take additional photos when the white frame moves to each end of the viewfinder window.



- Make sure to keep the white frame inside the viewfinder window.
- The subjects should remain still while taking wide self-portraits.
- The top and bottom parts of the image displayed on the preview screen may be cut out of the photo depending on the shooting conditions.

Interval shot

Take series of self-portraits at an interval and save photos you want.

- 1 On the preview screen, tap  to switch to the front camera for self-portraits.
- 2 Tap **MODE** → **Interval shot**.
- 3 Face the front camera lens.
- 4 To apply beauty effect, tap  and select options. Refer to [Applying beauty effects](#) for more information.
- 5 When the device detects your face, tap the screen to take a photo of yourself.
The device will take four photos at the two-second intervals.
To take a photo using your palm, tap  and tap the **Gesture control** switch to activate it. Show your palm to the front camera. After recognising your palm, the device will take a photo after a few seconds.
- 6 Tick photos you want to save and tap **SAVE**.




Camera settings

Quick settings

On the preview screen, use the following quick settings.



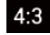
The available options may vary depending on the shooting mode and which camera is being used.

- : Select a filter effect to use when taking photos or recording videos.
- : Select a metering method. This determines how light values are calculated. **Centre-weighted** uses the light in the centre portion of the shot to calculate the exposure of the shot. **Spot** uses the light in a concentrated centre area of the shot to calculate the exposure of the shot. **Matrix** averages the entire scene.
- : Select the length of the delay before the camera automatically takes a photo.

-  : Activate or deactivate the flash.



Do not use the flash close to your eyes. Using a flash close to the eyes may cause temporary loss of vision or damage to the eyes.

-  : Select a resolution for photos. Using a higher resolution will result in higher quality photos, but they will take up more memory.



The resolution of a photo may be affected by lighting conditions.

-  : Set the device to record sound before or after taking a photo.

Camera settings

On the preview screen, tap .



The available options may vary depending on the shooting mode and which camera is being used.

- **Video size (rear) / Video size (front):** Select a resolution for videos. Using a higher resolution will result in higher quality videos, but they will take up more memory.
- **Gesture control:** Set the device to detect your palm, so you can use it to take self-portraits.
- **Save pictures as previewed:** Invert the image to create a mirror-image of the original scene, when taking photos with the front camera.
- **Grid lines:** Display viewfinder guides to help composition when selecting subjects.
- **Location tags:** Attach a GPS location tag to the photo.



- GPS signal strength may decrease in locations where the signal is obstructed, such as between buildings or in low-lying areas, or in poor weather conditions.
- Your location may appear on your photos when you upload them to the Internet. To avoid this, deactivate the location tag setting.

- **Review pictures:** Set the device to show photos after capturing them.
- **Quick launch:** Set the device to launch the camera by pressing the Home key twice quickly.
- **Storage location:** Select the memory location for storage.
- **Volume keys function:** Set the device to use the Volume key to control the shutter or zoom function.
- **Reset settings:** Reset the camera settings.

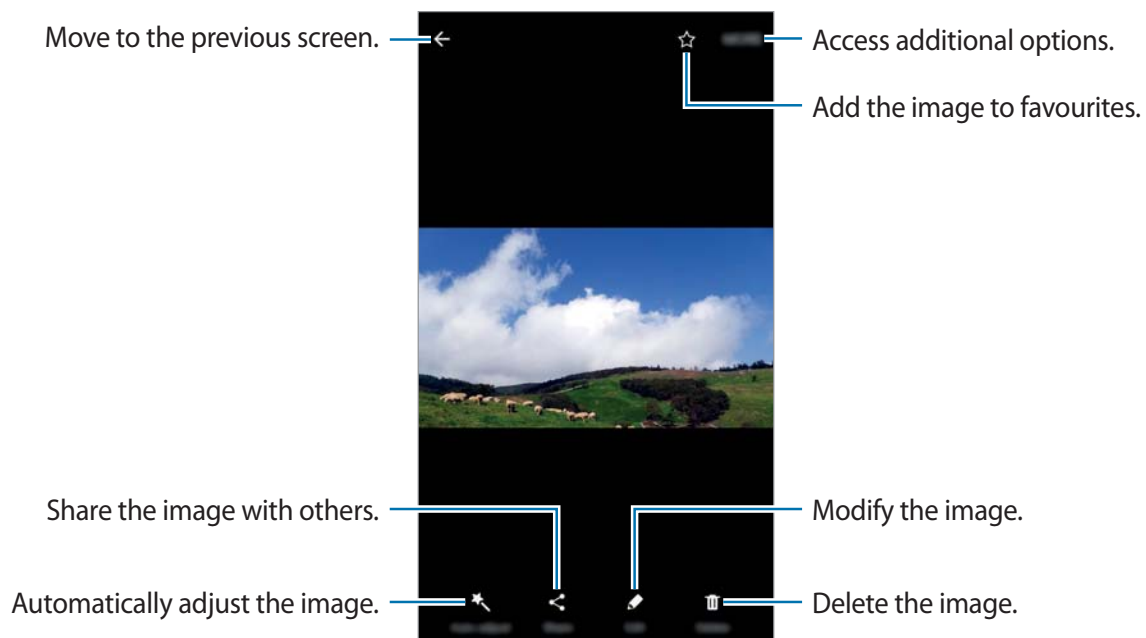
Gallery

Introduction

View and manage photos and videos stored in the device.


Viewing images

- 1 Tap **Gallery** on the Apps screen.
- 2 Select an image.



To hide or show the menus, tap the screen.

Viewing videos

- 1 Tap **Gallery** on the Apps screen.
- 2 Select a video to play. Video files show the  icon on the preview thumbnail.



Deleting images or videos

Deleting an image or a video

Select an image or a video and tap **Delete** at the bottom of the screen.

Deleting multiple images and videos


- 1 On the main Gallery screen, tap and hold an image or a video to delete.
- 2 Tick the images or videos to delete.
- 3 Tap **DELETE**.

Sharing images or videos

Select an image or a video, tap **Share** at the bottom of the screen, and then select a sharing method.

Sharing event albums


View photos and videos by time and location. You can share event albums with your contacts.

1 On the main Gallery screen, tap  → **Event**.

You can view photos and videos sorted by event.

To manually create event albums, tap  and select photos or videos to add.

2 Select an event album to share.

3 Tap  and select contacts.

When your contacts accept the share request, the event album will be shared and more photos and videos can be added to the event album by your contacts.



- To use this feature, your phone number must be verified.
- You may incur additional charges when sharing files via the mobile network.
- If the recipients have not verified their phone numbers or if their devices do not support the feature, a link to the files will be sent to them via text message. Link recipients may not be able to use some features. The link will expire after a certain period.

S Planner


Introduction

Manage your schedule by entering upcoming events or tasks in your planner.

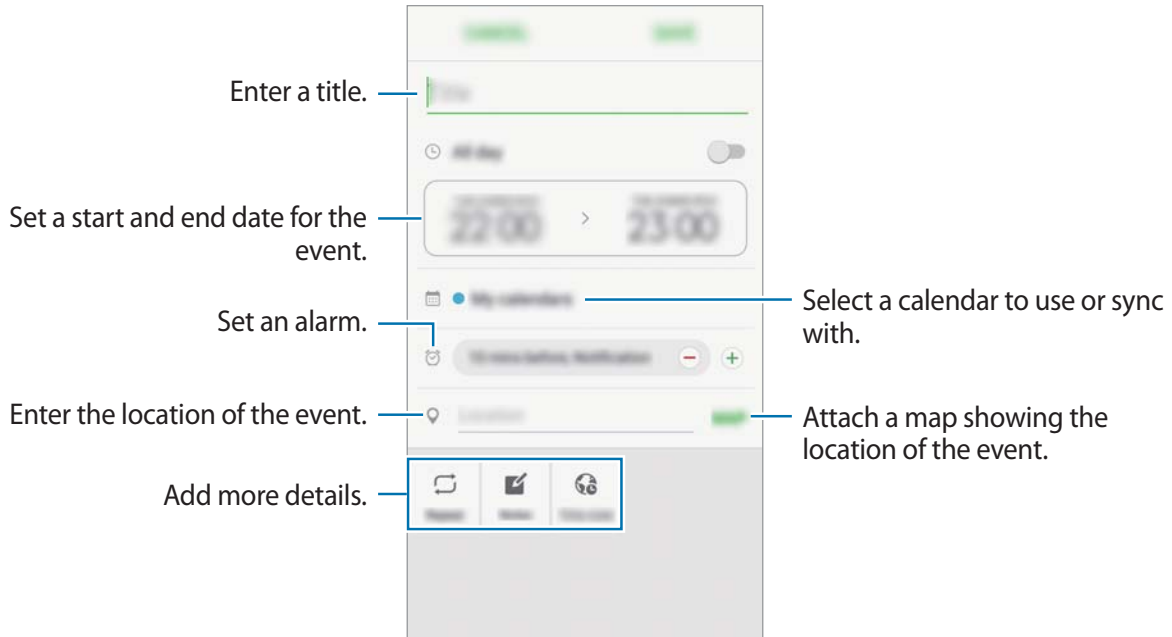
Creating events

1 Tap **S Planner** on the Apps screen.

2 Tap  or double-tap a date.

If the date already has saved events or tasks in it, tap the date and tap .

3 Enter event details.



4 Tap **SAVE** to save the event.

Creating tasks

1 Tap **S Planner** on the Apps screen.

2 Tap ▼ → **Tasks**.

3 Enter task details and tap **TODAY** or **TOMORROW** to set a due date. To add more details, tap .

4 Tap **SAVE** to save the task.

Syncing events and tasks with your accounts

On the Apps screen, tap **Settings** → **Accounts**, select an account service, and then tap the **Sync Calendar** switch to sync events and tasks with the account.

To add accounts to sync with, open the Apps screen and tap **S Planner** → **MORE** → **Manage calendars** → **Add account**. Then, select an account to sync with and sign in. When an account is added, it will appear on the list.

S Health

Introduction

S Health helps you manage your wellness and fitness. Set fitness goals, check your progress, and keep track of your overall wellness and fitness.



This app may appear on the Apps screen depending on the region or service provider.

Starting S Health

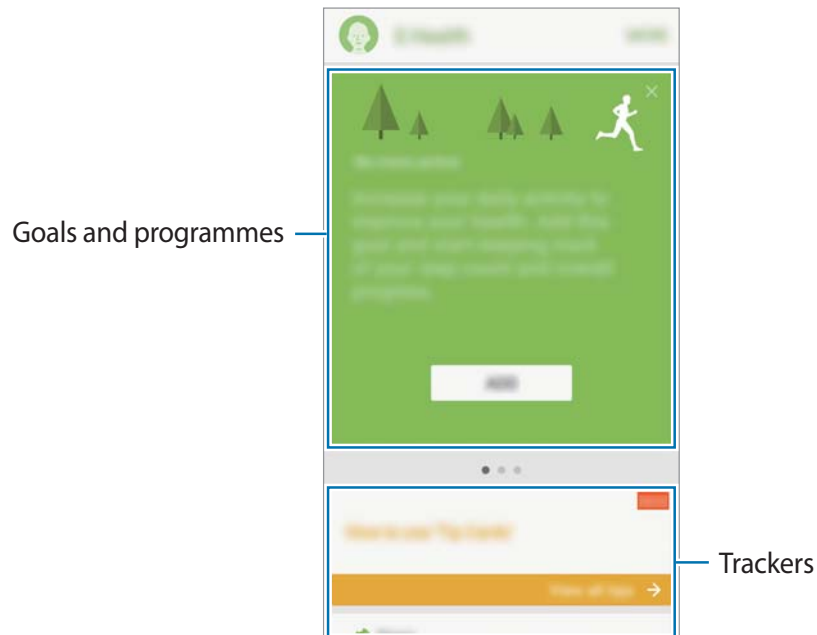
When running this app for the first time or restart it after performing a data reset, follow the on-screen instructions to complete the setup.

- 1 Tap **Samsung** → **S Health** on the Apps screen.
- 2 Follow the on-screen instructions to complete the setup.

Using S Health

You can view the key information from S Health menus and trackers to monitor your wellness and fitness.

Tap **Samsung** → **S Health** on the Apps screen.



To add trackers, goals, or programmes to the S Health screen, tap **MORE** → **Manage items**, and then select items under the **TRACKERS**, **GOALS**, or **PROGRAMMES** tab.

- **GOALS:** Set your daily fitness goals and view your progress.
- **PROGRAMMES:** Use customisable exercise programmes.
- **TRACKERS:** Monitor your activities, food intake, and body measurements.



To access more information about S Health functions, tap **MORE** → **Settings** → **Help**.

Additional information



- S Health is intended for fitness and wellness purposes only and is not intended for use in the diagnosis of disease or other conditions, or in the cure, mitigation, treatment, or prevention of disease.
- The available functions, features and addable applications for S Health may vary from country to country due to different local laws and regulations. You should check the features and applications available in your specific region before use.
- S Health applications and its service can be changed or discontinued without prior notice.
- The purpose for data collection is limited to providing the service that you have requested, including providing additional information to enhance your wellness, sync data, data analysis and statistics or to develop and provide better services. (But if you sign in to your Samsung account from S Health, your data may be saved on the server for data backup purposes.) Personal information may be stored until the completion of such purposes. You can delete personal data stored by S Health by using the Reset data option in the Settings menu. To delete any data you have shared with social networks or transferred to storage devices, you must delete them separately.
- You may share and/or sync your data with additional Samsung services or compatible third party services that you select, as well as with any of your other connected devices. Access to S Health information by such additional services or third party devices will only be permitted with your express approval.
- You assume full responsibility for the inappropriate use of data shared on social networks or transmitted to others. Use caution when sharing your personal data with others.
- If the device is connected to measuring devices, verify the communication protocol to confirm proper operation. If you use a wireless connection, such as Bluetooth, the device may be affected by electronic interference from other devices. Avoid using the device near other devices that transmit radio waves.
- Please read Terms and Conditions and Privacy Policy of S Health carefully before using it.

Voice Recorder

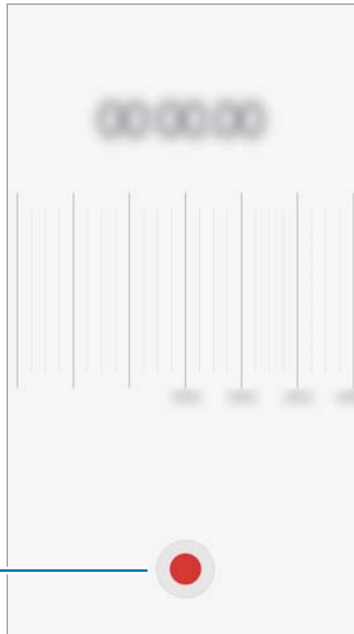
Use this app to record or play voice memos.



This app may appear on the Apps screen depending on the region or service provider.

- 1 On the Apps screen, tap **Samsung** → **Voice Recorder**.
- 2 Tap  to start recording. Speak into the microphone.
Tap  to pause recording.
While making a voice recording, tap **BOOKMARK** to insert a bookmark.

Start recording.



- 3 Tap **SAVE** to finish recording.

My Files

Access and manage various files stored in the device.



This app may appear in the **Tools** folder depending on the region or service provider.

On the Apps screen, tap **Samsung** → **My Files**.

View files by category, or view files stored in the device.

To check the status of used and available memory, tap **STORAGE USAGE**.


To search for files or folder, tap **SEARCH**.

Memo

Create memos and organise them by category.

On the Apps screen, tap **Memo**.

Composing memos

Tap  on the memos list and enter a memo. While composing a memo, use the following options:

- **Category:** Create or set a category.
- **Tasks:** Add tick boxes at the beginning of each row to create a list of tasks.
- **Image:** Insert images.
- **Drawing:** Write or draw memos to insert. You can select pen thickness and colour.
- **Voice:** Make a voice recording to insert.

To save the memo, tap **SAVE**.

To edit a memo, tap a memo, and then tap the content of the memo.

Searching for memos

Tap **SEARCH** on the memos list and enter a keyword to search for memos that include the keyword.

Clock

Introduction

Set alarms, check the current time in many cities around the world, time an event, or set a specific duration.

Alarm

On the Apps screen, tap **Clock** → **Alarm**.

Setting alarms

Tap **ADD** in the alarms list, set an alarm time, select the days on which the alarm will repeat, set other various alarm options, and then tap **SAVE**.

To open the keypad to enter an alarm time, tap the time input field.

To set an alarm with various alarm options, set alarm options under the time input field, and then tap **SAVE**.

To activate or deactivate alarms, tap the clock icon next to the alarm in the alarms list.

Stopping alarms

Tap **DISMISS** to stop an alarm. If you have previously enabled the snooze option, tap **SNOOZE** to repeat the alarm after a specified length of time.

Deleting alarms

Tap ✕ on an alarm in the list of alarms.

World clock

On the Apps screen, tap **Clock** → **World clock**.

Creating clocks

Tap **ADD** and enter a city name or select a city from the cities list.

Deleting clocks

Tap ✕ on a clock.

Stopwatch

- 1 On the Apps screen, tap **Clock** → **Stopwatch**.
- 2 Tap **START** to time an event.
To record lap times while timing an event, tap **LAP**.
- 3 Tap **STOP** to stop timing.
To restart the timing, tap **RESUME**.
To clear lap times, tap **RESET**.


Timer

- 1 On the Apps screen, tap **Clock** → **Timer**.
- 2 Set the duration, and then tap **START**.
To open the keypad to enter the duration, tap the duration input field.
- 3 Tap **DISMISS** when the timer goes off.

Calculator

Perform simple or complex calculations.

Tap **Calculator** on the Apps screen.

Rotate the device to landscape orientation to display the scientific calculator. If **Auto rotate** is disabled, tap  to display the scientific calculator.

To see the calculation history, tap **HISTORY**. To close the calculation history panel, tap **KEYPAD**.

To clear the history, tap **HISTORY** → **CLEAR HISTORY**.

Radio

Listening to the FM radio

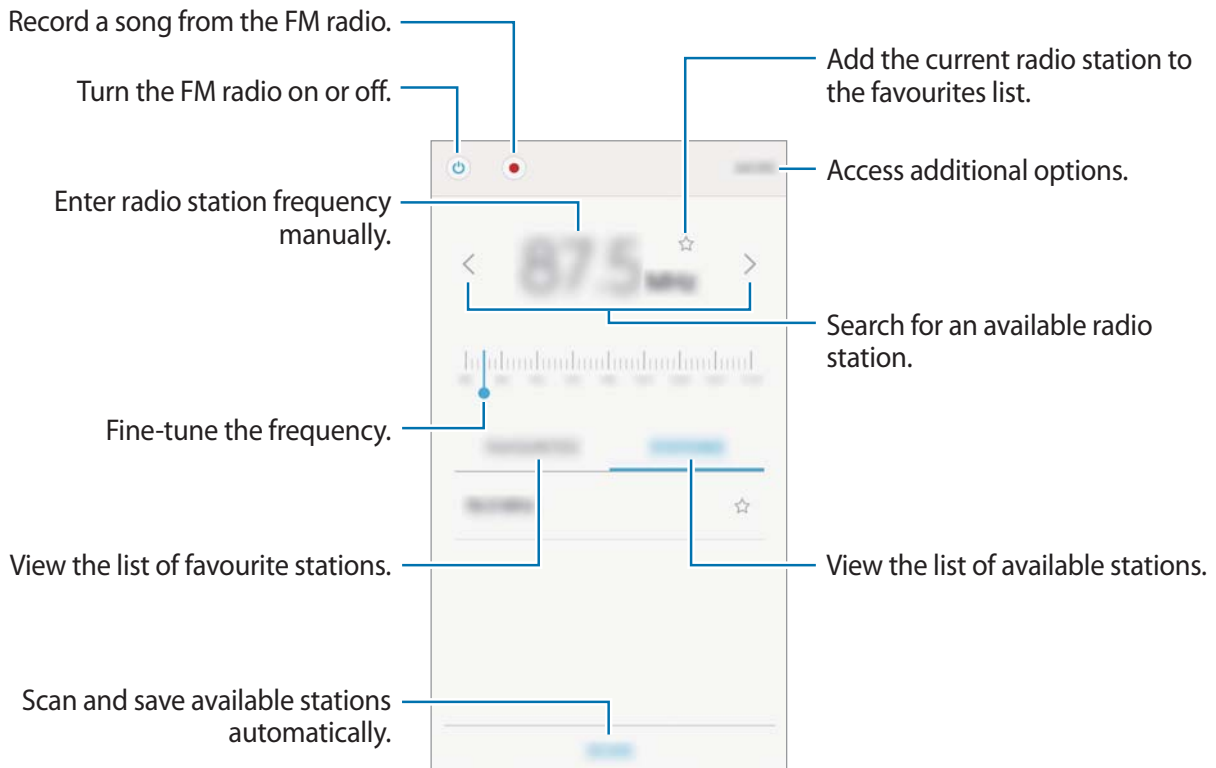
Tap **Samsung** → **Radio** on the Apps screen.

Before you use this app, you must connect a headset, which serves as the radio antenna.



- The FM radio scans and saves available stations automatically when running for the first time.
- This app may appear on the Apps screen depending on the region or service provider.

Tap  to turn on the FM radio. Select the radio station you want from the stations list.



Scanning radio stations

Tap **Samsung** → **Radio** on the Apps screen.

Tap **STATIONS** → **SCAN**, and then select a scan option. The FM radio scans and saves available stations automatically.

Select the radio station you want from the stations list.

Google apps

Google provides entertainment, social network, and business apps. You may require a Google account to access some apps. Refer to [Accounts](#) for more information.

To view more app information, access each app's help menu.



Some apps may not be available or may be labelled differently depending on the region or service provider.

Chrome

Search for information and browse webpages.

Gmail

Send or receive emails via the Google Mail service.

Maps

Find your location on the map, search for locations, and view location information for various places.

Play Music

Discover, listen to, and share music on your device. You can upload music collections stored on your device to the cloud and access them later.

Play Movies & TV

Download videos to watch from **Play Store**.

Drive

Store your content on the cloud, access it from anywhere, and share it with others.

YouTube

Watch or create videos and share them with others.

Photos

Search for, manage, and edit all your photos and videos from various sources in one place.

Hangouts

Chat with your friends individually or in groups and use images, emoticons, and video calls while you are chatting.

Google

Search quickly for items on the Internet or your device.

Settings

Introduction

Customise settings for functions and apps. You can make your device more personalised by configuring various setting options.

On the Apps screen, tap **Settings**.

To search for settings by entering keywords, tap **SEARCH**.

To edit the list of frequently used settings, tap **EDIT**. Then, tick items to add or deselect items to remove.

Wi-Fi

Connecting to a Wi-Fi network

Activate the Wi-Fi feature to connect to a Wi-Fi network and access the Internet or other network devices.



Turn off Wi-Fi to save the battery when not in use.

1 On the Settings screen, tap **Wi-Fi**, and then tap the switch to activate it.

2 Select a network from the Wi-Fi networks list.

Networks that require a password appear with a lock icon.

3 Tap **CONNECT**.



- Once the device connects to a Wi-Fi network, the device will reconnect to that network each time it is available without requiring a password. To prevent the device connecting to the network automatically, select it from the list of networks and tap **FORGET**.
- If you cannot connect to a Wi-Fi network properly, restart your device's Wi-Fi feature or the wireless router.

Wi-Fi Direct

Wi-Fi Direct connects devices directly via a Wi-Fi network without requiring an access point.

1 On the Settings screen, tap **Wi-Fi**, and then tap the switch to activate it.

2 Tap **Wi-Fi Direct**.

The detected devices are listed.

If the device you want to connect to is not in the list, request that the device turns on its Wi-Fi Direct feature.

3 Select a device to connect to.

The devices will be connected when the other device accepts the Wi-Fi Direct connections request.

Sending and receiving data

You can share data, such as contacts or media files, with other devices. The following actions are an example of sending an image to another device.

1 Tap **Gallery** on the Apps screen.

2 Select an image.

3 Tap **Share** → **Wi-Fi Direct**, select a device to transfer the image to, and then tap **SHARE**.

4 Accept the Wi-Fi Direct connection request on the other device.

If the devices are already connected, the image will be sent to the other device without the connection request procedure.

Ending the device connection

1 Tap **Wi-Fi** on the Settings screen.

2 Tap **Wi-Fi Direct**.

The device displays the connected devices in the list.

3 Tap the device name to disconnect the devices.

Bluetooth

Introduction

Use Bluetooth to exchange data or media files with other Bluetooth-enabled devices.



- Samsung is not responsible for the loss, interception, or misuse of data sent or received via Bluetooth.
- Always ensure that you share and receive data with devices that are trusted and properly secured. If there are obstacles between the devices, the operating distance may be reduced.
- Some devices, especially those that are not tested or approved by the Bluetooth SIG, may be incompatible with your device.
- Do not use the Bluetooth feature for illegal purposes (for example, pirating copies of files or illegally tapping communications for commercial purposes).
Samsung is not responsible for the repercussion of illegal use of the Bluetooth feature.

Pairing with other Bluetooth devices

1

On the Settings screen, tap **Bluetooth**, and then tap the switch to activate it.

The detected devices are listed.

2

Select a device to pair with.

If the device you want to pair with is not in the list, request that the device turns on its visibility option. Refer to the other device's user manuals.



Your device is visible to other devices while the Bluetooth settings screen is open.

3

Accept the Bluetooth connection request on your device to confirm.


The devices will be connected when the other device accepts the Bluetooth connection request.

Sending and receiving data

Many apps support data transfer via Bluetooth. You can share data, such as contacts or media files, with other Bluetooth devices. The following actions are an example of sending an image to another device.

- 1 Tap **Gallery** on the Apps screen.
- 2 Select an image.
- 3 Tap **Share** → **Bluetooth**, and then select a device to transfer the image to.
If your device has paired with the device before, tap the device name without confirming the auto-generated passkey.
If the device you want to pair with is not in the list, request that the device turns on its visibility option.
- 4 Accept the Bluetooth connection request on the other device.

Unpairing Bluetooth devices

- 1 Tap **Bluetooth** on the Settings screen.
The device displays the paired devices in the list.
- 2 Tap  next to the device name to unpair.
- 3 Tap **Unpair**.

Flight mode

This disables all wireless functions on your device. You can use only non-network services.

On the Settings screen, tap **Flight mode**.



Make sure the device is turned off during takeoff and landing. After takeoff, you can use the device in flight mode if allowed by aircraft personnel.

Mobile hotspot and tethering

Use the device as a mobile hotspot to share the device's mobile data connection with other devices when the network connection is not available. Connections can be made via Wi-Fi, USB, or Bluetooth.

On the Settings screen, tap **Mobile hotspot and tethering**.




You may incur additional charges when using this feature.

- **Mobile hotspot:** Use the mobile hotspot to share the device's mobile data connection with computers or other devices.
- **Bluetooth tethering:** Use Bluetooth tethering to share the device's mobile data connection with computers or other devices via Bluetooth.
- **USB tethering:** Use USB tethering to share the device's mobile data connection with a computer via USB. When connected to a computer, the device is used as a wireless modem for the computer.

Using the mobile hotspot

Use your device as a mobile hotspot to share your device's mobile data connection with other devices.

- 1 On the Settings screen, tap **Mobile hotspot and tethering** → **Mobile hotspot**.
- 2 Tap the switch to activate it.
The  icon appears on the status bar. Other devices can find your device in the Wi-Fi networks list.
To set a password for the mobile hotspot, tap **MORE** → **Configure Mobile hotspot** and select the level of security. Then, enter a password and tap **SAVE**.
- 3 On the other device's screen, search for and select your device from the Wi-Fi networks list.
- 4 On the connected device, use the device's mobile data connection to access the Internet.

Data usage

Keep track of your data usage amount and customise the settings for the limitation.

On the Settings screen, tap **Data usage**.

- **Mobile data:** Set the device to use data connections on any mobile network.
- **Background data:** Prevent apps that are running in the background from using a mobile data connection.
- **Set mobile data limit:** Set a limit for mobile data usage.

To change the monthly reset date for the monitoring period, tap ▼ → **Change cycle**.

Limiting data usage

Set the device to automatically disable the mobile data connection when the amount of mobile data you have used reaches your specified limit.

- 1 On the Settings screen, tap **Data usage** and tap the **Set mobile data limit** switch to activate it.
- 2 Drag the limit adjustment bar upwards or downwards to set the limit.
- 3 Drag the warning adjustment bar upwards or downwards to set a data usage alert level. The device will alert you when the warning level is reached.

SIM card manager (dual SIM models)

Activate your SIM or USIM cards and customise the SIM card settings. Refer to [Using dual SIM or USIM cards \(dual SIM models\)](#) for more information.

On the Settings screen, tap **SIM card manager**.

- **Voice call:** Select a SIM or USIM card for voice calls.
- **Text messages:** Select a SIM or USIM for messaging.
- **Mobile data:** Select a SIM or USIM card for data service.
- **Dual SIM always on:** Set the device to allow incoming calls from the other SIM or USIM card during a call.



When this feature is enabled, you may incur additional charges for call forwarding depending on the region or service provider.

Mobile networks

Configure your mobile network settings.

On the Settings screen, tap **Mobile networks**.

- **Data roaming:** Set the device to use data connections when you are roaming.
- **Access Point Names:** Set up access point names (APNs).
- **Network mode** (single SIM models): Select a network type.
Network mode SIM 1 / Network mode SIM 2 (dual SIM models): Select a network type.
- **Network operators:** Search for available networks and manually register a network. You can also select the preferred network automatically.

NFC and payment (NFC-enabled models)

Introduction

Your device allows you to read near field communication (NFC) tags that contain information about products. You can also use this feature to make payments and buy tickets for transportation or events after downloading the required apps.



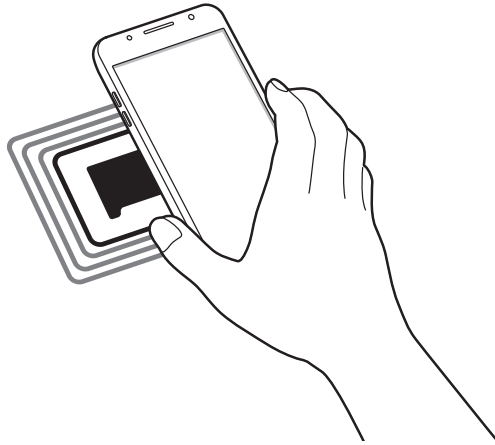
The device contains a built-in NFC antenna. Handle the device carefully to avoid damaging the NFC antenna.

Using the NFC feature

Use the NFC feature to send images or contacts to other devices, and read product information from NFC tags.

- 1 On the Settings screen, tap **NFC and payment**, and then tap the switch to activate it.

- 2 Place the NFC antenna area on the back of your device near an NFC tag.
The information from the tag appears.



Ensure that the device's screen is unlocked. Otherwise, the device will not read NFC tags or receive data.

Making payments with the NFC feature

Before you can use the NFC feature to make payments, you must register for the mobile payment service. To register or get more information about the service, contact your service provider.

- 1 On the Settings screen, tap **NFC and payment**, and then tap the switch to activate it.
- 2 Touch the NFC antenna area on the back of your device to the NFC card reader.

To set the default payment app, open the settings screen and tap **NFC and payment** → **Tap and pay** → **PAYMENT**, and then select an app.



The payment services list may not include all available payment apps.

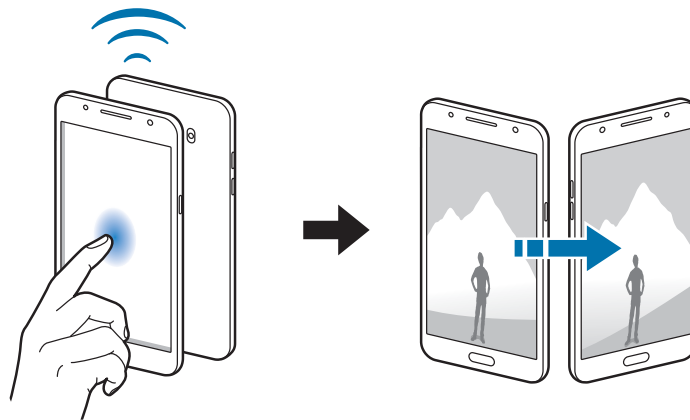
Sending data

Allow data exchange when your device's NFC antenna touches the other device's NFC antenna.

- 1 On the Settings screen, tap **NFC and payment**, and then tap the switch to activate it.
- 2 Tap **Android Beam** and tap the switch to activate it.
- 3 Select an item and touch the other device's NFC antenna to your device's NFC antenna.
- 4 When **Touch to beam.** appears on the screen, tap your device's screen to send the item.



If both devices try to send data simultaneously, the file transfer may fail.



More connection settings

Options

Customise settings to control other features.

On the Settings screen, tap **More connection settings**.

- **Nearby device scanning:** Set the device to scan for nearby devices to connect to.
- **Printing:** Configure settings for printer plug-ins installed on the device. You can search for available printers or add one manually to print files. Refer to [Printing](#) for more information.
- **VPN:** Set up and connect to virtual private networks (VPNs).

Printing

Configure settings for printer plug-ins installed on the device. You can connect the device to a printer via Wi-Fi or Wi-Fi Direct, and print images or documents.



Some printers may not be compatible with the device.

Adding printer plug-ins

Add printer plug-ins for printers you want to connect the device to.

- 1 On the Settings screen, tap **More connection settings** → **Printing** → **Download plug-in**.
- 2 Search for a printer plug-in in **Play Store**.
- 3 Select a printer plug-in and install it.
- 4 Select a printer plug-in and tap the switch to activate it.

The device searches for printers that are connected to the same Wi-Fi network as your device.

To add printers manually, tap **MORE** → **Add printer** → **ADD PRINTER**.

To change print settings, tap **MORE** → **Printing settings**.

Printing content

While viewing content, such as images or documents, tap **Share** → **Print** → ▼ → **All printers**, and then select a printer.

Smart Manager

Introduction

The Smart manager provides an overview of the status of your device's battery, storage, RAM, and system security. You can also automatically optimise the device with one tap of your finger.



Using the quick optimisation feature

On the Settings screen, tap **Smart Manager** → **CLEAN ALL**.

The quick optimisation feature improves device performance through the following actions.

- Clearing some memory.
- Deleting unnecessary files and closing apps running in the background.
- Scanning for malware.

Battery

On the Settings screen, tap **Smart Manager** → **Battery**.

Check the remaining battery power and time to use the device. For devices with low battery levels, conserve battery power by activating power saving features.



- The usage time left shows the time remaining before the battery power runs out. Usage time left may vary depending on your device settings and operating conditions.
- You cannot receive notifications from apps that use power saving mode.

Managing the battery

To save battery power by setting whether to optimise the battery usage for each app, tap **DETAILS** for the app power saving and tap the switch to activate it.

Storage

Check the status of the used and available memory.

On the Settings screen, tap **Smart Manager** → **Storage**.

Managing the memory

To delete residual files, such as cache, tap **DELETE**. To delete files or uninstall apps that you do not use any more, tap **DETAILS** for the user data and select a category. Then, tick items to select and tap **DELETE**.

RAM

On the Settings screen, tap **Smart Manager** → **RAM**.

To speed up your device by reducing the amount of RAM you are using, tap **END ALL** to close all background apps.

Device security

Check the device's security status. This feature scans your device for malware.

On the Settings screen, tap **Smart Manager** → **Device security**.

Applications

Manage the device's apps and change their settings.

On the Settings screen, tap **Applications**.

- **Application manager:** View and manage the apps on your device.
- **Default applications:** Select a default settings for using apps.
- **Application settings:** Customise the settings for each app.
- **Google settings:** Configure settings for some features provided by Google.

Sounds and vibrations

Change settings for various sounds on the device.

On the Settings screen, tap **Sounds and vibrations**.

- **Sound mode:** Set the device to use sound mode or silent mode.
- **Vibrate while ringing:** Set the device to vibrate and play a ringtone for incoming calls.
- **Volume:** Adjust the volume level for call ringtones, music and videos, system sounds, and notifications.
- **Ringtone** (single SIM models): Change the ringtone settings.
Ringtone (dual SIM models): Change the ringtone and notification sound settings.
- **Vibration pattern:** Select a vibration pattern.
- **Notification sounds** (single SIM models): Select a default notification sound. You can also change the notification settings for each app.
Notification sounds (dual SIM models): Change the notification settings for each app.
- **Touch sounds:** Set the device to sound when you select an app or option on the touchscreen.
- **Screen lock sounds:** Set the device to sound when you lock or unlock the touchscreen.
- **Charging sounds:** Set the device to sound when it is connected to a charger.
- **Dialling keypad tones:** Set the device to sound when you tap the buttons on the keypad.
- **Keyboard sound:** Set the device to sound when a key is touched.
- **Sound quality and effects:** Configure additional sound settings.

Notifications

Change the notification settings for each app.

On the Settings screen, tap **Notifications**.

To customise notification settings, tap **ADVANCED** and select an app.

- **Allow notifications:** Allow notifications from the selected app.
- **Set as priority:** Display notifications at the top of the notification panel and include them in the allowed list when Do not disturb is activated.
- **Previews in pop-ups:** Display notification previews in pop-up windows.
- **Hide on lock screen:** Hide notifications from the selected app when the device is locked.
- **Hide content on lock screen:** Hide the content of notifications from the selected app when the device is locked.
- **More settings:** Customise additional notification settings for the selected app.

Do not disturb

Set the device to mute incoming calls and notification sounds, except for allowed exceptions.

On the Settings screen, tap **Do not disturb**.

- **Enable now:** Activate Do not disturb mode immediately.
- **Enable as scheduled:** Activate Do not disturb mode at preset times. You can select days and set the start and end times.
- **Allow exceptions:** Customise the settings for allowed exceptions.

Display

Change the display settings.

On the Settings screen, tap **Display**.

- **Brightness:** Adjust the brightness of the display.
- **Outdoor mode:** Activate outdoor mode to make the display easier to see in bright conditions.
- **Font:** Change the font size and type.
- **Icon backgrounds:** Set whether to display shaded backgrounds to make icons stand out.
- **Screen timeout:** Set the length of time the device waits before turning off the display's backlight.
- **Screen mode:** Change the screen mode to adjust the display's colour and contrast.
- **Screensaver:** Set the device to launch a screensaver when the device is charging.

Advanced features

Activate useful features and change the settings that control them.

On the Settings screen, tap **Advanced features**.



Excessive shaking or impact to the device may cause unintended input for some features.

- **One-handed operation:** Activate one-handed operation mode for your convenience when using the device with one hand.
- **Quick launch Camera:** Set the device to launch the camera by pressing the Home key twice quickly.
- **Smart alert:** Set the device to alert you if you have missed calls or new messages when you pick up the device.



This feature may not work if the screen is turned on or the device is not on a flat surface.

- **Easy mute:** Set the device to mute incoming calls or alarms by facing the device's screen downwards.

Wallpaper

Change the wallpaper settings for the Home screen and the locked screen.

On the Settings screen, tap **Wallpaper**.

Themes

Apply various themes to the device to change the visual elements of the Home screen, locked screen, and icons.

On the Settings screen, tap **Themes**.

To download more themes, tap **MORE THEMES**.

Home screen

Customise the Home screen by adding, deleting, or rearranging Home screen panels, and more. Refer to [Home screen options](#) for more information.

On the Settings screen, tap **Home screen**.

Lock screen and security

Change the settings for securing the device and the SIM or USIM card.

On the Settings screen, tap **Lock screen and security**.



The available options may vary depending on the screen lock method selected.

- **Screen lock type:** Change the screen lock method.
- **Info and app shortcuts:** Change settings for the items displayed on the locked screen.
- **Notifications on lock screen:** Set whether or not to show notification content on the locked screen and select which notifications to display.
- **Secure lock settings:** Change screen lock settings for the selected lock method.

- **Find My Mobile:** Activate or deactivate the Find My Mobile feature. Access the Find my mobile website (findmymobile.samsung.com) to track and control your lost or stolen device.
- **Unknown sources:** Set the device to allow the installation of apps from unknown sources.
- **Encrypt device:** Encrypt your device's data to prevent others from accessing it if the device is lost or stolen. To use your encrypted device, you must decrypt the device's data every time you turn on the device. You can set whether your device's data will be decrypted automatically or whether an unlock code is required. It is not possible to back up or restore data when it is encrypted. If you enter the unlock code incorrectly several times in a row and reach the attempt limit, your device will perform a factory data reset.



This feature may not be supported by some devices.

- **Secure startup:** Your device's data is encrypted to prevent others from accessing it if the device is lost or stolen. To use your encrypted device, you must decrypt the device's data every time you turn on the device. You can set whether your device's data will be decrypted automatically or whether an unlock code is required. It is not possible to back up or restore data when it is encrypted. If you enter the unlock code incorrectly several times in a row and reach the attempt limit, your device will perform a factory data reset.



This feature may not be supported by some devices.

- **Encrypt SD card:** Set the device to encrypt files on a memory card.



If you reset your device to the factory defaults with this setting enabled, the device will not be able to read your encrypted files. Disable this setting before resetting the device.

- **Other security settings:** Configure additional security settings.

Privacy and safety

Options

Change the settings for maintaining your privacy and safety.

On the Settings screen, tap **Privacy and safety**.

- **Location:** Change settings for location information permissions.
- **App permissions:** View the list of features and apps that have permission to use them. You can also edit the permission settings. Refer to [Setting app permissions](#) for more information.
- **Report diagnostic info:** Set the device to automatically send the device's diagnostic and usage information to Samsung.
- **Send SOS messages:** Set the device to send help messages by pressing the Power key three times. You can also send sound recordings along with the message to the recipients. Refer to [Send SOS messages](#) for more information.

Send SOS messages

In an emergency situation, quickly press the Power key three times. The device sends messages to your emergency contacts. The messages include your location information.

- 1 On the Settings screen, tap **Privacy and safety** → **Send SOS messages**, and then tap the switch to activate it.
- 2 Follow the on-screen instructions to add emergency contacts if you have not already done so.

To send help messages with audio recordings or photos, tap the **Attach audio recording** or **Attach pictures** switch to activate it.



The **Attach pictures** option may not be available depending on the region or service provider.

Adding emergency contacts

On the Settings screen, tap **Privacy and safety** → **Send SOS messages** → **Send messages to** → **ADD**. Tap **Create contact** and enter contact information or tap **Select from contacts** to add an existing contact as a emergency contact.

Easy mode

Easy mode provides an easier user experience by using a simpler layout and bigger icons on the Home screen.



Some app features may not be available in easy mode.


Switching to easy mode

- 1 On the Settings screen, tap **Easy mode** → **Easy mode**.
- 2 Select apps under **Easy applications** to apply a simpler layout.
- 3 Tap **DONE**.

Returning to standard mode

Swipe to the left on the Home screen and tap **Settings** → **Easy mode** → **Standard mode** → **DONE**.

Managing shortcuts

To add a shortcut to an app to the Home screen, swipe to the left, tap , and then select an app.

To add a shortcut to a contact on the Home screen, swipe to the right and tap .

To delete a shortcut from the Home screen, tap **EDIT** and select an app or contact with .

Accessibility

Configure various settings to improve accessibility to the device.

On the Settings screen, tap **Accessibility**.

- **Vision:** Customise the settings to improve accessibility for visually impaired users.
- **Hearing:** Customise the settings to improve accessibility for users with hearing impairment.
- **Dexterity and interaction:** Customise the settings to improve accessibility for users who have reduced dexterity.

- **Direct access:** Set the device to open selected accessibility menus when you press the Home key three times quickly.
- **Notification reminder:** Set the device to alert you to notifications that you have not checked at the interval.
- **Answering and ending calls:** Change the method of answering or ending calls.
- **Single tap mode:** Set the device to control incoming calls or notifications by tapping the button instead of dragging it.
- **Services:** View accessibility services installed on the device.

Accounts

Add your Samsung and Google accounts, or other accounts, to sync with.

Adding accounts

Some apps used on your device require a registered account. Create accounts to have the best experience with your device.

- 1 On the Settings screen, tap **Accounts** → **Add account**.
- 2 Select an account service.
- 3 Follow the on-screen instructions to complete the account setup.

To sync content with your accounts, select an account and select items to sync.

Removing accounts

On the Settings screen, tap **Accounts**, select an account name, select the account to remove, and then tap **MORE** → **Remove account**.

Backup and reset

Change the settings for managing settings and data.

On the Settings screen, tap **Backup and reset**.

- **Back up my data:** Back up your personal information and app data to the Samsung server. You can also set the device to automatically back up data.
- **Restore:** Restore previously backed up personal information and app data from your Samsung account.
- **Back up my data:** Set the device to back up settings and app data to the Google server.
- **Backup account:** Set up or edit your Google backup account.
- **Automatic restore:** Set the device to automatically restore settings and app data from the Google server when apps are reinstalled.
- **Reset settings:** Return the device's settings to the factory default settings without deleting data.
- **Reset network settings:** Return the network connection settings to the factory default settings.
- **Factory data reset:** Reset settings to the factory default values and delete all data.

Language and input

Select device languages and change settings, such as keyboards and voice input types. Some options may not be available depending on the selected language.

On the Settings screen, tap **Language and input**.

- **Language:** Select a display language for all menus and apps.
- **Default keyboard:** Select a default keyboard type for text input.
- **Samsung keyboard:** Change the Samsung keyboard settings.
- **Google voice typing:** Change the voice input settings.
- **Text-to-speech:** Change the text-to-speech settings.
- **Pointer speed:** Adjust the pointer speed for the mouse or trackpad connected to your device.

Battery

View battery power information and change power saving options.

On the Settings screen, tap **Battery**.



The usage time left shows the time remaining before the battery power runs out. Usage time left may vary depending on your device settings and operating conditions.

- **BATTERY USAGE:** View the amount of battery power consumed by your device.
- **Power saving mode:** Activate power-saving mode and change the settings for power-saving mode. Refer to [Power saving mode](#) for more information.
- **Ultra power saving mode:** Extend standby time and reduce battery consumption by displaying a simpler layout and allowing limited access to an app. Refer to [Ultra power saving mode](#) for more information.
- **App power saving:** Save battery power by optimising the battery usage for each app.
- **Percentage on status bar:** Set the device to display the remaining battery life.

Storage

View memory information for your device.

On the Settings screen, tap **Storage**.



The actual available capacity of the internal memory is less than the specified capacity because the operating system and default apps occupy part of the memory. The available capacity may change when you update the device.

Accessories

Change the accessory settings.

On the Settings screen, tap **Accessories**.

- **Automatic unlock:** Set the device to unlock automatically when the cover is flipped open. You can use this feature only for some screen lock methods.

Date and time

Access and alter the following settings to control how the device displays the time and date.

On the Settings screen, tap **Date and time**.



If the battery remains fully discharged or removed from the device, the time and date is reset.

- **Automatic date and time:** Automatically update the time and date when moving across time zones. When this feature is deactivated, you can manually set the date, time, and time zone.
- **Use 24-hour format:** Display time in 24-hour format.

User manual

View help information to learn how to use the device and apps or configure important settings.

On the Settings screen, tap **User manual**.

About device

Access device information, edit the device name, or update device software.

On the Settings screen, tap **About device**.

Appendix

Troubleshooting

Before contacting a Samsung Service Centre, please attempt the following solutions. Some situations may not apply to your device.

When you turn on your device or while you are using the device, it prompts you to enter one of the following codes:

- Password: When the device lock feature is enabled, you must enter the password you set for the device.
- PIN: When using the device for the first time or when the PIN requirement is enabled, you must enter the PIN supplied with the SIM or USIM card. You can disable this feature by using the Lock SIM card menu.
- PUK: Your SIM or USIM card is blocked, usually as a result of entering your PIN incorrectly several times. You must enter the PUK supplied by your service provider.
- PIN2: When you access a menu requiring the PIN2, you must enter the PIN2 supplied with the SIM or USIM card. For more information, contact your service provider.

Your device displays network or service error messages

- When you are in areas with weak signals or poor reception, you may lose reception. Move to another area and try again. While moving, error messages may appear repeatedly.
- You cannot access some options without a subscription. For more information, contact your service provider.

Your device does not turn on

- When the battery is completely discharged, your device will not turn on. Fully charge the battery before turning on the device.
- The battery may not be inserted properly. Insert the battery again.
- Wipe both gold-coloured contacts and insert the battery again.

The touchscreen responds slowly or improperly

- If you attach a screen protector or optional accessories to the touchscreen, the touchscreen may not function properly.
- If you are wearing gloves, if your hands are not clean while touching the touchscreen, or if you tap the screen with sharp objects or your fingertips, the touchscreen may malfunction.
- The touchscreen may malfunction in humid conditions or when exposed to water.
- Restart your device to clear any temporary software bugs.
- Ensure that your device software is updated to the latest version.
- If the touchscreen is scratched or damaged, visit a Samsung Service Centre.

Your device freezes or encounters a fatal error

Try the following solutions. If the problem is still not resolved, contact a Samsung Service Centre.

Restarting the device

If your device freezes or hangs, you may need to close apps or turn off the device and turn it on again.

Forcing restart

If your device is frozen and unresponsive, press and hold the Power key and the Volume Down key simultaneously for more than 7 seconds to restart it.

Resetting the device

If the methods above do not solve your problem, perform a factory data reset.

On the Apps screen, tap **Settings** → **Backup and reset** → **Factory data reset** → **RESET DEVICE** → **ERASE EVERYTHING**. Before performing the factory data reset, remember to make backup copies of all important data stored in the device.

Calls are not connected

- Ensure that you have accessed the right cellular network.
- Ensure that you have not set call barring for the phone number you are dialling.
- Ensure that you have not set call barring for the incoming phone number.

Others cannot hear you speaking on a call

- Ensure that you are not covering the built-in microphone.
- Ensure that the microphone is close to your mouth.
- If using a headset, ensure that it is properly connected.

Sound echoes during a call

Adjust the volume by pressing the Volume key or move to another area.

A cellular network or the Internet is often disconnected or audio quality is poor

- Ensure that you are not blocking the device's internal antenna.
- When you are in areas with weak signals or poor reception, you may lose reception. You may have connectivity problems due to issues with the service provider's base station. Move to another area and try again.
- When using the device while moving, wireless network services may be disabled due to issues with the service provider's network.

The battery icon is empty

Your battery is low. Charge the battery.

The battery does not charge properly (For Samsung-approved chargers)

- Ensure that the charger is connected properly.
- If the battery terminals are dirty, the battery may not charge properly or the device may turn off. Wipe both gold-coloured contacts and try charging the battery again.

The battery depletes faster than when first purchased

- When you expose the device or the battery to very cold or very hot temperatures, the useful charge may be reduced.
- Battery consumption increases when you use messaging features or some apps, such as games or the Internet.
- The battery is consumable and the useful charge will get shorter over time.

Your device is hot to the touch

When you use apps that require more power or use apps on your device for an extended period of time, your device may feel hot to the touch. This is normal and should not affect your device's lifespan or performance. If the device overheats or feels hot for a prolonged period, do not use it for a while. If the device continues to overheat, contact a Samsung Service Centre.

Error messages appear when launching the camera

Your device must have sufficient available memory and battery power to operate the camera app. If you receive error messages when launching the camera, try the following:

- Charge the battery.
- Free some memory by transferring files to a computer or deleting files from your device.
- Restart the device. If you are still having trouble with the camera app after trying these tips, contact a Samsung Service Centre.

Photo quality is poorer than the preview

- The quality of your photos may vary, depending on the surroundings and the photography techniques you use.
- If you take photos in dark areas, at night, or indoors, image noise may occur or images may be out of focus.

Error messages appear when opening multimedia files

If you receive error messages or multimedia files do not play when you open them on your device, try the following:

- Free some memory by transferring files to a computer or deleting files from your device.
- Ensure that the music file is not Digital Rights Management (DRM)-protected. If the file is DRM-protected, ensure that you have the appropriate licence or key to play the file.
- Ensure that the file formats are supported by the device. If a file format is not supported, such as DivX or AC3, install an app that supports it. To confirm the file formats that your device supports, visit www.samsung.com.
- Your device supports photos and videos captured with the device. Photos and videos captured by other devices may not work properly.
- Your device supports multimedia files that are authorised by your network service provider or providers of additional services. Some content circulated on the Internet, such as ringtones, videos, or wallpapers, may not work properly.

Another Bluetooth device is not located

- Ensure that the Bluetooth wireless feature is activated on your device.
- Ensure that the Bluetooth wireless feature is activated on the device you wish to connect to.
- Ensure that your device and the other Bluetooth device are within the maximum Bluetooth range (10 m).

If the tips above do not solve the problem, contact a Samsung Service Centre.

A connection is not established when you connect the device to a computer

- Ensure that the USB cable you are using is compatible with your device.
- Ensure that you have the proper driver installed and updated on your computer.
- If you are a Windows XP user, ensure that you have Windows XP Service Pack 3 or higher installed on your computer.

Your device cannot find your current location

GPS signals may be obstructed in some locations, such as indoors. Set the device to use Wi-Fi or a mobile network to find your current location in these situations.

Data stored in the device has been lost

Always make backup copies of all important data stored in the device. Otherwise, you cannot restore data if it is corrupted or lost. Samsung is not responsible for the loss of data stored in the device.

A small gap appears around the outside of the device case

- This gap is a necessary manufacturing feature and some minor rocking or vibration of parts may occur.
- Over time, friction between parts may cause this gap to expand slightly.

There is not enough space in the device's storage

Delete unnecessary data, such as cache, using the Smart manager or manually delete unused apps or files to free up storage space.

Copyright

Copyright © 2016 Samsung Electronics

This manual is protected under international copyright laws.

No part of this manual may be reproduced, distributed, translated, or transmitted in any form or by any means, electronic or mechanical, including photocopying, recording, or storing in any information storage and retrieval system, without the prior written permission of Samsung Electronics.

Trademarks

- SAMSUNG and the SAMSUNG logo are registered trademarks of Samsung Electronics.
- Bluetooth® is a registered trademark of Bluetooth SIG, Inc. worldwide.
- Wi-Fi®, Wi-Fi Protected Setup™, Wi-Fi Direct™, Wi-Fi CERTIFIED™, and the Wi-Fi logo are registered trademarks of the Wi-Fi Alliance.
- All other trademarks and copyrights are the property of their respective owners.