

GiONEE

E8

User Guide



Disclaimer: The colors, specifications, functions and graphics shown/mentioned in the user manual may differ from the actual product. In such a case, the latter shall govern. Images shown are for representation purpose only. Specifications are subject to change without prior notice. GiONEE keeps the right to modify the content in this user guide without prior notice.

Contents

1. For your safety.....	2
2. Learn about the phone.....	4
Overview	4
Function Keys.....	4
3. Before using	5
Insert SIM cards and SD card.....	5
Charge the Battery	6
4. Getting started	6
Basic Function	6
Home screen	7
Touch screen	8
5. Communication.....	9
Make a call	9
Incoming call.....	9
Send a Message.....	9
6. Multimedia	10
Camera.....	10
Gallery	11
Music	12
7. Connection	13
Airplane mode	13
Mobile Network.....	13
WLAN	13
Bluetooth	14
USB	14
NFC	15
8. Advanced Functions	16
Fingerprint Security	16
Extreme mode	16
Chameleon	17
Smart Gestures	17
Touchless wake-up	20
Suspend option.....	23
9. Health and safety.....	24
SAR Compliance	24
E-Waste	26
Operating Temperature.....	27
10. FAQ	27

1. For your safety

Please read this manual before using the cell phone to ensure safe and proper use.



SWITCH OFF IN HOSPITALS

Please abide by relevant provisions or regulations. Please turn off your mobile phone near medical equipment.



SWITCH OFF WHEN REFUELING

Don't use the phone at a refueling point. Don't use near fuel or chemicals.



MICRO SIM CARDS AND SD CARD ARE PORTABLE

Keep your phone, phone parts and accessories out of children's reach.



BATTERY

Please do not destroy or damage the battery, it can be dangerous and cause fire.

Please do not throw battery in fire to avoid hazard.

When battery cannot be used, please dispose in safe environment.

Do not try to dismantle the battery.

If the battery or the charger is broken or old, please stop using them, and replace with certified genuine battery.



USE QUALITY EQUIPMENT

Use GiONEE authorized equipment to avoid danger.



ROAD SAFETY COMES FIRST

Give full attention while driving, Park before using your phone.
Please follow traffic rules of local city town.



INTERFERENCE

All wireless devices may be susceptible to cause interference,
which could affect performance.



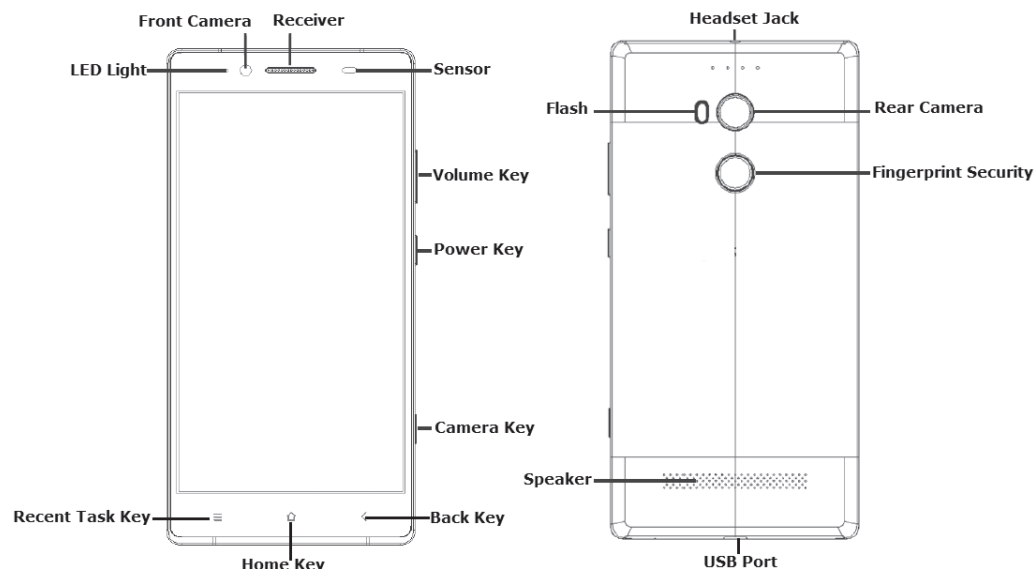
SWITCH OFF IN AIRCRAFT

Wireless devices can cause interference in aircraft. It's not
only dangerous but also illegal to use mobile phone in an
aircraft.



2. Learn about the phone

Overview



Function Keys

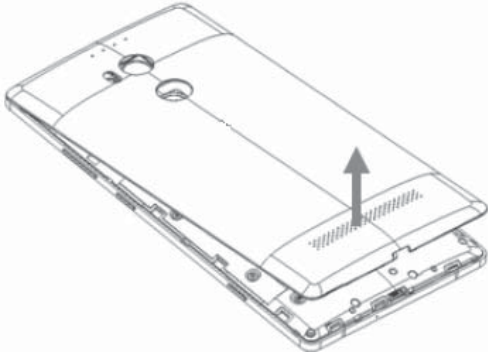
Keys	Functions
Power key	a) Press to Turn on/off the screen. b) Long press to open a menu for power off the phone or reboot.
Volume key	Press to adjust the volume of device.
Camera key	a) Double press to capture 5 photos at once. b) Long press to access camera screen.
Recent task key	Tap to open the list of recent used apps.
Home key	Tap to return to Home screen. Long press to access Google™ search.
Back key	Tap to return to the previous screen.

3. Before using

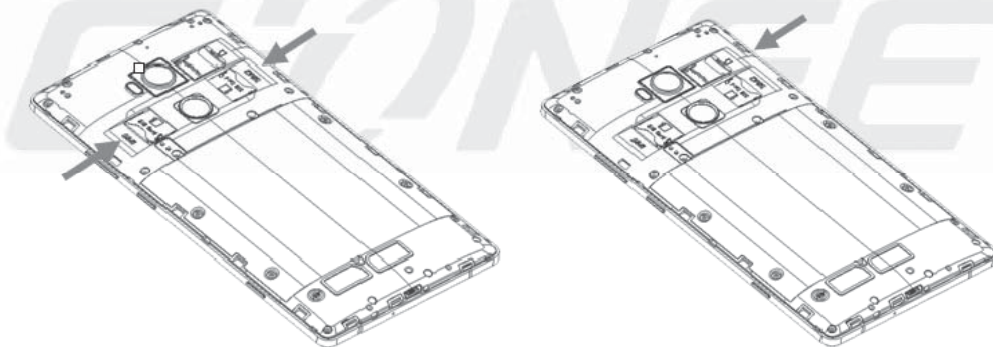
The phone is a Dual SIM mobile and allowed you to use two mobile networks.

✚ Insert SIM cards and SD card

1. Switch off the mobile phone. Then remove the cover as shown in figure.



2. Insert the Micro SIM cards and SD card to the card slots correctly.



3. Put back the cover.

✓ Notice:

- Only Micro SIM cards are available to this device.
- Micro SIM cards are supported to hot plugging but not for SD card.
- Do not remove the Micro SIM cards and SD card while the device is transferring data. Doing so may cause data to be lost or damage to the cards and device.
- The SIM card is a small part. Please keep away from Children to avoid swallowing the card by accident.

- Do not touch the metal surface of SIM cards and SD card away from electromagnetic field to avoid damage data.

± Charge the Battery

Charge the battery before using it. Connect the USB cable to the USB power adaptor, and then plug the end of the USB cable into the USB Port.

✓ Notice:

The battery of mobile phone is fixed. It cannot remove.

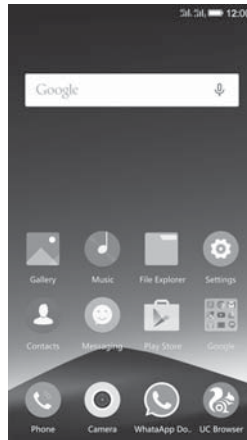
4. Getting started

± Basic Function

- Turn on the phone
Press and hold a while of power key to turn on the phone.
- Turn off the phone
Long press the power key until a menu will show. Choose “Power off” to turn off the phone.
- Restart the phone
Option 1: Long press the power key until a menu will show. Choose “Reboot” to restart the phone.
Option 2: Long press the power key till 12 seconds to auto restart the phone.
- Lock the screen
Option 1: Press the power key to turn off the screen and lock it
Option 2: In the Home screen, double tap the screen will lock it.
Option 3: The screen will auto lock if you don't use the phone for a while.
- Unlock the screen
Press the power key, and then slide to top for unlocking.

Home screen

The Home screen is your starting point to access all the features on your phone. It displays application icons, widgets, and other features.



- Status Bar

At the top of the screen, it displays the time, signal, battery information, and icons for notifications that you've received.

- Notification Center

Swipe down from the top edge to see more detail of the new notification, such as messaging, missed call, Wi-Fi connection. Tap the notification and drag to left or right to delete it.

- Control Center

Swipe up from the bottom edge. In the control center, it's quick to turn on / off Bluetooth, Wi-Fi, Data connection, Regional screenshot, Voice, Vibrate, Extreme mode.

Tap "more" to show Hidden shortcut buttons.

You can also adjust the brightness or tap "A" for auto adjustment.

- Move an application

Touch & hold the icon you want to move. Drag the icon to move or cross at the edge of the screen to move into another screen.

- Uninstall an application

Touch & hold the icon you want to uninstall. The top /

bottom of the icon will appear “Uninstall”. Tap it to uninstall.

- Creating a folder

Drag an icon on the top of another one to create a folder. Open the folder and then touch & hold the folder name to rename it.

Touch screen

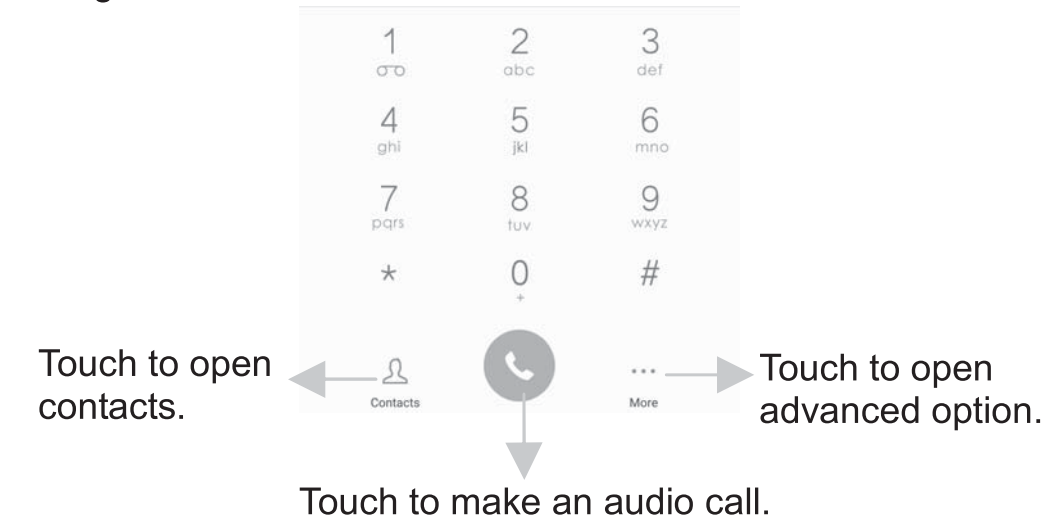
The main way to control Android™ 5.1 features is by using your finger to touch icons, buttons, menu items, the onscreen keyboard, and other items on the touch screen.

- Touch: To act on items on the screen, such as application and settings icons, to type letters and symbols using the onscreen keyboard, or to press onscreen buttons, you simply touch them with your finger.
- Touch & hold: Touch & hold an item on the screen by touching it and not lifting your finger until an action occurs.
- Drag: Touch & hold an item for a moment and then, without lifting your finger, move your finger on the screen until you reach the target position. You drag items on the Home screen to reposition them and you drag to open the Notification panel.
- Swipe or slide: To swipe or slide, you quickly move your finger across the surface of the screen, without pausing when you first touch (so you don't drag an item instead). For example, you slide the screen up or down to scroll a list, and in some Calendar views you swipe quickly across the screen to change the range of time visible.
- Pinch: In some applications (Such as Maps, Browser, and Gallery) you can zoom in and out by placing two fingers on the screen at once and pinching them together (to zoom out) or spreading them apart (to zoom in).
- Rotate the screen: On most screens, the orientation of the screen rotates with the phone as you turn it from upright to its side and back again. You can turn this feature on and off.

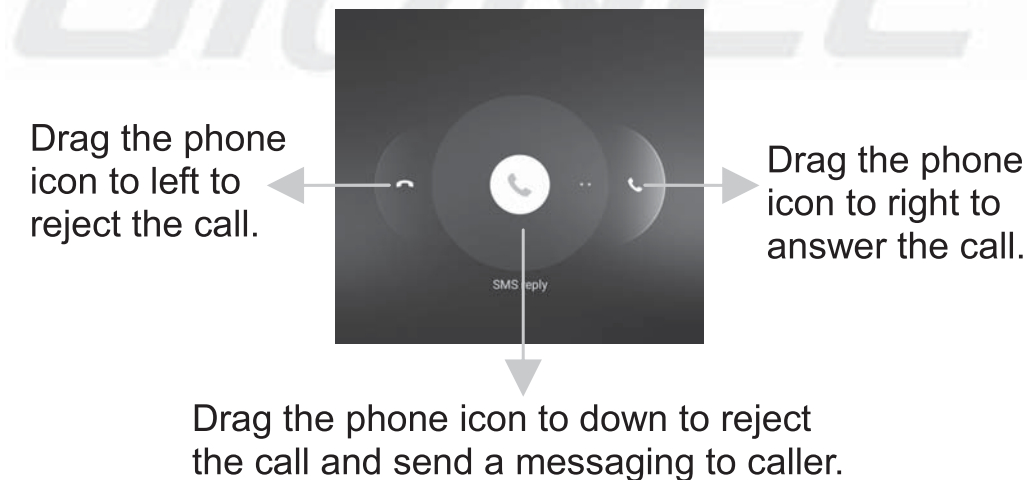
5. Communication

✚ Make a call

Touch the phone icon on the Home screen. Enter the phone number you want to dial. And then, touch the phone icon for calling.

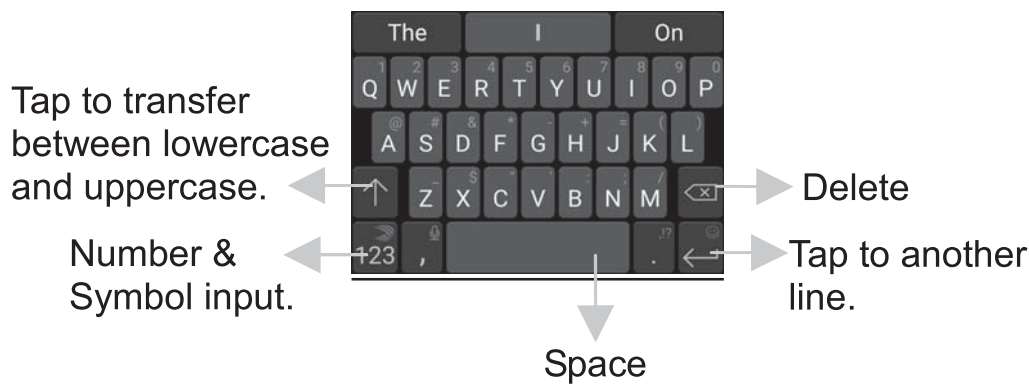


✚ Incoming call



✚ Send a Message

You can use this phone to exchange text messages and multimedia messages with others. The messages from the same contact will be grouped into one conversation list. So you can see your entire message history with a person conveniently.



6. Multimedia

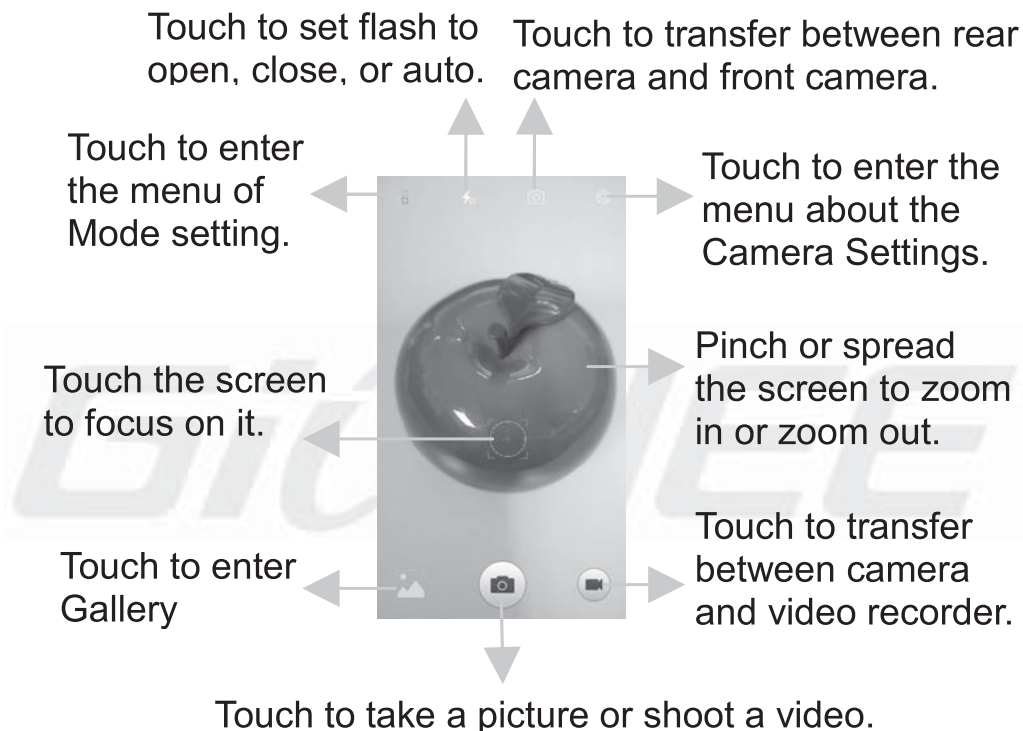
📷 Camera

Camera is a combination of camera and camcorder that you use to shoot and share pictures and videos.

Take a photo

- **Normal** Take a photo as usually.
- **Professional** Change the clarity and focus mode. For Rear camera only.
- **Face Beauty** DIY your face with Smoother, Whitening, Slimming, Enlarger. Drag the slider to adjust it.
- **Take anytime**
 - The perfect shoot mode, recommend the best photo.
 - The track shooting mode, record the object movement trail and then merge into a picture.
 - The preferred to shoot mode will focus on the best facial expressions while taking a group photo.
 - The motion blur mode, make the moving object clear as the background is fuzzy.
 - The pedestrians remove mode, remove the moving objects from the photos.
- **Magic Focus** The effect will be better if closed-range and long-range object included.
- **Filter** Multiple filters can choose. Normal, LOMO, Hazy, Bokeh, Time, Cate, Beauty, Sweet, Vintage, B&W.
- **HDR** High-Dynamic Range mode will improve the light and the shadow effect at the same time. For Rear camera only.

- **Panorama** Press camera button and move the phone on one direction slowly. For Rear camera only.
- **Night** Through nightscape noise reduction, we see the thing in the photo as it actually is. For Rear camera only.
- **Pic Note** Intelligent crop and optimize the text photo once shooting. For Rear camera only.
- **Ultra pixel** Take the HD photos in a size of 5 times as larger as the maximum pixel.
- **Smart scene** Change camera mode of night, HDR, fog/flare, auto base on the view.



Shoot a Video

Tap video icon to transfer from camera mode to video mode. Adjust the quality and other settings if you wish. Touch video icon for shooting and pausing.

📁 Gallery

Touch the Gallery icon in the Launcher to view albums of your pictures and videos which you've taken with camera. You may share the pictures and videos with your friends by Messaging, Email, Bluetooth and so on.

For the private photo, you can encrypt it. And save it on:
**File Explorer-->File-->Phone storage-->Pictures
-->More--> Show hidden files-->Gallery Safe**

Music

You use Music player to organize and listen to music and other audio files that you transfer to your phone from your computer.

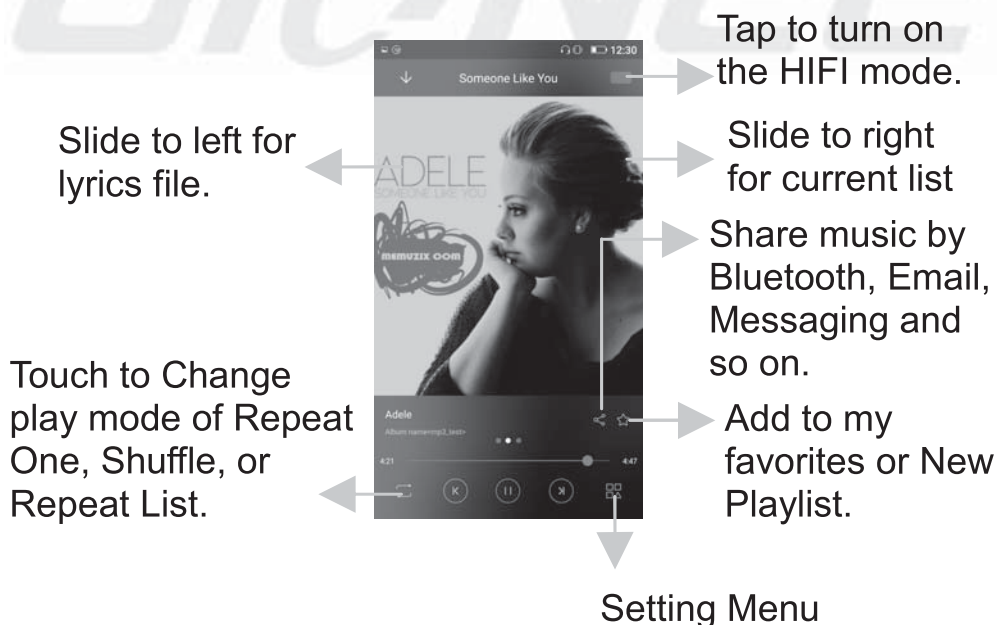
- Hi-Fi Switch

Hi-Fi audio only effects in Headset mode. The quality of sound can be improved when you play songs in Hi-Fi mode.

- 1) **Settings-->Sound and vibration-->HIFI MUSIC** to turn it on.
- 2) Tap to “Music” icon on the home screen, and then tap “HIFI” as appointed as below to turn it on.

✓ Notices:

DTS function will be auto closed once you turn on the Hi-Fi function to achieve the best effect.



7. Connection

Your phone can connect to a variety of networks and devices, including mobile networks for voice and data transmission, WLAN data networks, and Bluetooth devices, such as headsets. You can also connect your phone to a computer, to transfer files from your phone storage, and share your phone's mobile data connection via USB or as a portable WLAN hotspot.

✚ Airplane mode

Settings-->Airplane mode to turn it on

Some locations may require you to turn off your phone's Cellular network, WLAN, and Bluetooth wireless connections. You can turn off all these wireless connections at once by placing your phone in Airplane mode.

✚ Mobile Network

When you assemble your phone with a SIM card from your wireless service provider, your phone is configured to use your provider's mobile networks for voice calls and for transmitting data. Transfer data over your mobile network may result in extra fees. For more information, please contact your mobile network operator.

Settings-->Mobile Networks-->Network operators

The name of the wireless service provider you're currently registered with is selected in the list.

✚ WLAN

WLAN is a wireless networking technology that can provide internet access at distance of up to 100 meters, depending on the WLAN router and your surroundings. You can configure the WLAN as follow:

- **Settings-->WLAN** to turn it on.

The device scans for available WLAN networks and displays the names of those it finds.

Tap one of the listed networks and enter the password, if asked to join in.

Bluetooth

Bluetooth is a short-range wireless communications technology that devices can use to exchange information over a distance of about 10 meters. The most common Bluetooth devices are headphones for making calls or listening to music, hands-free kits for cars, and other portable device, including laptops and cell phones.

To send a file

Settings-->Bluetooth to turn it on.

Enter **File Explorer** to select a file, Select

Share-->Bluetooth.

Touch **Scan for devices**, the phone will scan for and display the names of all available Bluetooth devices in range.

Touch the names of the other device in the list to pair them.

After paired, the file will be sent.

To receive a file

Settings-->Bluetooth turn it on. Ensure your Bluetooth has been connected within visibility time.

You can receive files from the devices which are paired with yours. The file you received will be saved to the “Bluetooth” folder in the File Explorer.

To connect to a Handsfree device

- **Settings-->Bluetooth**, Select “**Search for devices**”;
- Turn on the Handsfree device, Select the Handsfree device in the list to pair.
- After paired, you can use the Handsfree device to listen to music and receive call.

USB

You can connect the phone to your computer with a USB cable to transfer music, pictures, and other files.

Turn on USB connection

1. Connect the phone to your computer with a USB cable.
2. Open the notification center and tap **Connected as a media device** to access files on this device.
3. Other USB options can be chosen.

Charge Phone, connected as a USB for charging.

View photos, connected as a camera to browse photos on PC only.

✓ **Notice:**

Do not disconnect the USB cable from the phone when you are transferring files. Doing so may cause data loss or phone damage.

± **NFC**

Near field communication (NFC) is a technology of smartphones and other devices to establish radio communication with each other by touching the devices together or bringing them into proximity to a short distance.

Settings-->More-->NFC to turn it on.

- NFC Exchange
In touch with other equipment can exchange contact, picture, music, video, webpage, file and so on.
- NFC Mark
Put the NFC tag near the phone as shown. The quick settings of tag will be appeared.



8. Advanced Functions

✚ Fingerprint Security

You can use the fingerprint Security in the rear cover to read your fingerprint instead of enter password to unlocking in the lock screen or view the encrypted file.

- Add a fingerprint

Settings-->Security-->Fingerprint-->Put your finger on the fingerprint Security and follow the instruction to repeat steps. At most 5 fingerprints data can be registered on the device.

- Rename a fingerprint

Settings-->Security-->Fingerprint-->Choose the fingerprint you want to rename and then tap it. You can name it left thumb or right forefinger for distinction.

- Delete a fingerprint

Settings-->Security-->Fingerprint-->Choose the fingerprint you want to delete and then tap it. Touch “Delete fingerprints” to delete it.

✚ Extreme mode

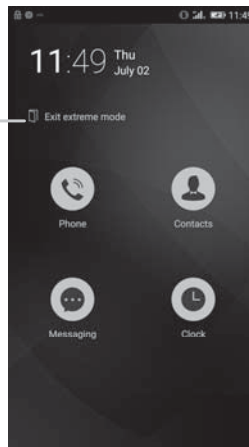
Extreme mode let mobile phone enter the minimalist desktop to extend standby time. But it only available for phone, contacts, messaging and clock can be used during this time.

Access to extreme mode

1) **Settings-->Power Management-->Power Manger-->Select Extreme mode**

2) **Home screen-->Control center-->Tap Extreme mode**

Tap to exit the extreme mode



✚ Chameleon

Color your phone. Take any scene, move the circles. Get any color randomly. The chosen colors will come to your phone table.



✚ Smart Gestures

Settings-->Advanced Settings-->Smart Gestures to turn it on.

The smart gestures system supports a variety of experience and control, through gesture can be more convenient operation. Some of the smart gesture functions will not work while flip cover is closed.

- Smart dial

Settings-->Advanced Settings-->Smart Gestures-->Select Smart dial

In message content page, contacts detail page or call history

details page, dial the number automatically after pick up the phone to your ear.

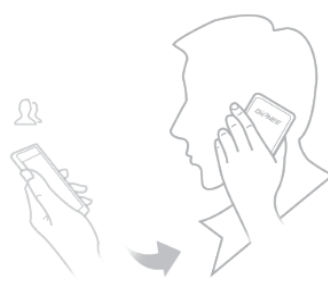
In contact detail page, directly dial the first number if you have many numbers.

Dual card mobile phone, please set default dial card from Settings→Dual card settings→Calls at first.

①



②

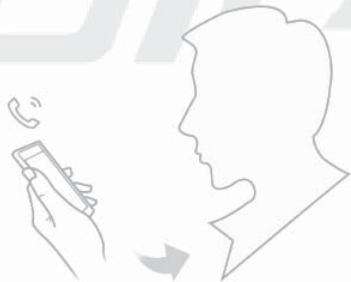


- Smart answer

Settings-->Advanced Settings-->Smart Gestures-->Select Smart answer

Pick up the phone to your ear so it will answer the incoming call automatically.

①



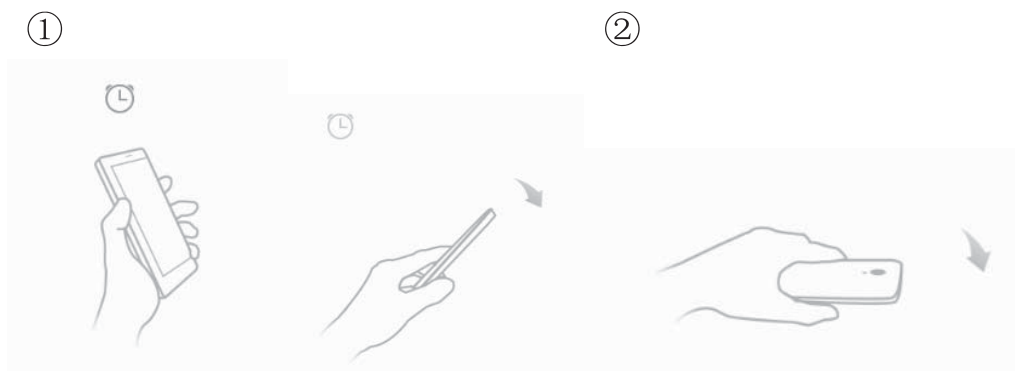
②



- Pause alarm

Settings-->Advanced Settings-->Smart Gestures-->Select Pause alarm

Flip back the phone to pause the on-going alarm.



- Black screen gestures

Settings-->Advanced Settings-->Smart Gestures-->Select Black screen gestures

Draw pattern to access men quickly while phone is in sleep mode.



- Smart vibration remind

Settings-->Advanced Settings-->Smart Gestures-->Select Smart vibration remind

Phone vibrate to remind the unread message or missed call notification in sleep mode.



- Smart bright screen

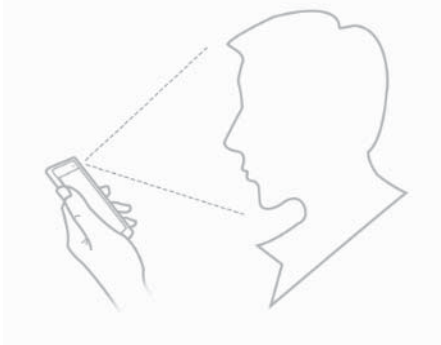
Settings-->Advanced Settings-->Smart Gestures-->Select Smart bright screen

When front camera detects you are viewing screen, the screen can be maintained normally. Enable this function, the

status bar will display this icon .

The following scenario, the function maybe failure:

- User doesn't face on the screen
- The light is too strong or too dark
- Front camera in use by other applications



- Double click wake

Settings-->Advanced Settings-->Smart Gestures-->Select Double click wake

In sleep screen, quick double tapping can wake up the mobile phone.



✚ Touchless wake-up

Settings-->Advanced Settings-->Smart Gestures-->Touchless wake-up to turn it on.

You can slide to unlock, view image, control volume without touch screen.

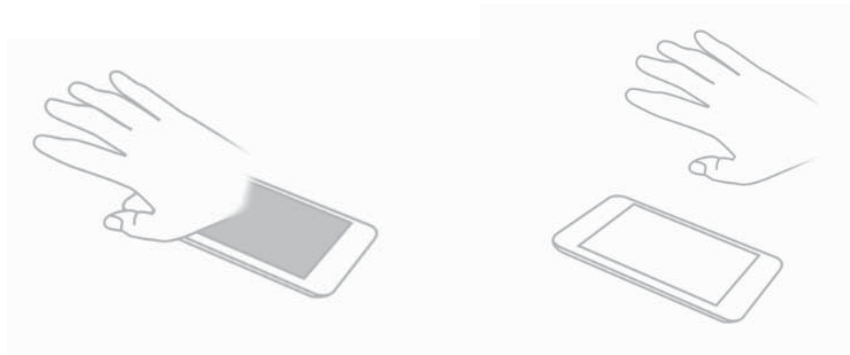
- Air light screen

Settings-->Advanced Settings-->Smart Gestures-->Touchless wake-up-->Select Air light screen

In sleep screen, palm wave slowly over the phone can wake up the screen.

①

②



- Touchless unlock

Settings-->Advanced Settings-->Smart Gestures-->Touchless wake-up-->Select Touchless unlock

In wake-up screen, palm wave slowly over the phone can unlock the screen.

①

②



- Touchless desktop control

Settings-->Advanced Settings-->Smart Gestures-->Touchless wake-up-->Select Touchless desktop control

While mobile phone is in system desktop, palm slowly wave left/right over the phone can slid desktop to according direction.

①



②



Mobile phone in the system desktop, mobile phone top downwards from the front palm slowly brushed lock screen.

①



②



Mobile phone in the desktop, the palm of the hand from the top to the slow mobile phone front breeze can enter the local wallpaper view interface.

①



②



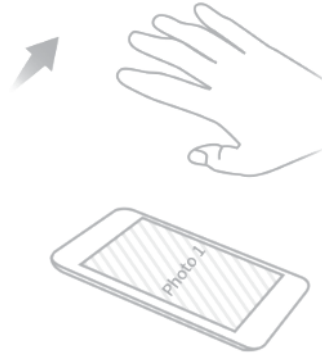
• Touchless image browsing
Settings-->Advanced Settings-->Smart Gestures-->Touchless wake-up-->Select Touchless image browsing

Wave your palm left/right slowly over the top of the phone to view the previous/next image.

①



②



- Touchless video control

Settings-->Advanced Settings-->Smart

Gestures-->Touchless wake-up-->Select Touchless video control

Wave your palm left/right slowly over the top of the phone to play/pause playing. Wave up/down to control volume up/down.

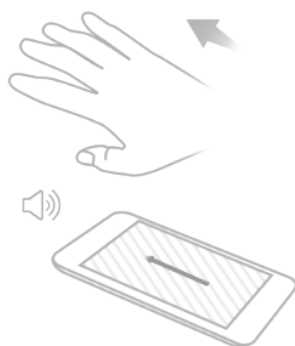
①



②



①



②



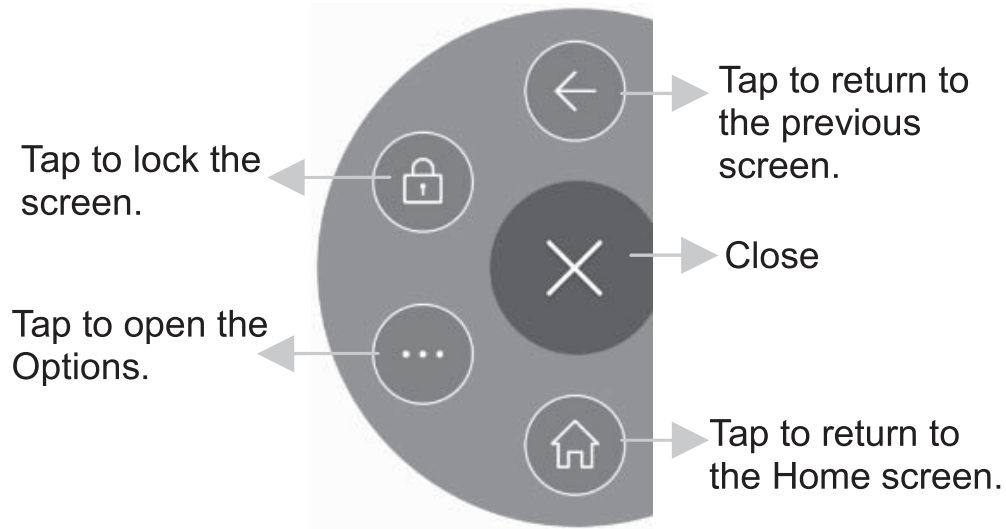
⚡ Suspend option

Suspend option helps you to use the mobile phone without

press the key. You can do the action just by tapping the screen.

Settings-->Advanced Settings-->Suspend option to turn it on.

Long press can be hidden in the notification bar.



9. Health and safety

Please read these simple guidelines. Not following them may be dangerous or illegal.

± SAR Compliance

Your phone is designed not to exceed the limits of emission of radio waves recommended by international guidelines.

SAR (specific absorption rate) is the measurement of body-absorbed RF quantity when the phone is in use. SAR value is ascertained according to the highest RF level generated during laboratory tests.

The SAR value of the phone may depend on factors such as proximity to the network tower, use of accessories and other enhancements.

The true SAR level during normal phone usage will be much lower than this level.

The highest SAR value of this device at the head and body are

0.26W/Kg and 0.909 W/Kg; Respectively averaged over 1.5cm gap of human tissue.

SAR Recommendations

Use a wireless hands-free system (headphone, headset) with a low power Bluetooth emitter.

Please keep your calls short and use SMS whenever more convenient. This advice applies especially to children, adolescents and pregnant women

Make sure the cell phone has a low SAR.

Prefer to use your cell phone when the signal quality is good.

People having active medical implants should preferably keep the cell phone at least 15 cm away from the implant.

Maintain a preferable distance of 15 mm from the device. Safe Driving

Do not use the phone while driving. When you have to use the phone, please use the personal hands-free kit.

Please do not put the phone onto any passenger seat or any place from which it may fall down in case of vehicular collision or emergency braking.

During Flight

Flight is influenced by interference caused by the phone. It is illegal to use a phone on the airplane. Please turn off your phone during a flight.

In Hospitals

Your Phone's radio waves may interfere with the functioning of inadequately shielded medical devices. Consult a physician or the manufacturer of the medical device to determine whether they are adequately shielded from external Radio Frequency. Switch off your device when regulations posted instruct you to do so.

To avoid potential interference with implanted medical devices such as a pacemaker or cardioverter defibrillator:

Always keep your phone at least 15.3 centimeters (6 inches) from the medical device.

Do not carry the wireless device in a breast pocket.

Turn off the phone if there is any reason to suspect that interference is taking place.

Follow the manufacturer directions for the implanted medical

device.

If you have any questions about using your wireless device with an implanted medical device, consult your health care provider.

Unsafe Areas

Please turn off your phone when you are close to a gas station or in the vicinity of any place where fuel and chemical preparations, or any other dangerous goods are stored.

E-Waste

INFORMATION UNDER E-WASTE (MANAGEMENT AND HANDLING) RULES, 2011

For disposal of e-waste, please call our helpline no: 1800 208 1166

or visit our website: <http://gionee.co.in/social/>

1. Do's for disposal of product

- a) Always drop your used electronic products, batteries, and packaging materials after the end of their life in nearest collection point or collection center
- b) Separate the packaging material according to responsible waste disposal options and sorting for recycling.
- c) The battery can easily be removed from the product for recycling.

2. Don'ts for disposal of equipment

- a) Never dump E-waste in garbage bins or municipal solid waste stream.
- b) Do not dispose of your product as unsorted municipal waste.
- c) Do not throw used batteries into household waste.
- d) Do not dispose damaged or leaking Lithium Ion (Li-Ion) battery with normal household waste.



3. Information on the consequences of improper handling,

accidental breakage damage and improper recycling of the end of life product.

- a) If batteries are not properly disposed of, it can cause harm to human health or the environment.
- b) Placing of batteries or devices on or in heating devices, such as microwave ovens, stoves, or radiators and improper disposal of batteries may lead to explosion.
If the battery terminals are in contact with metal objects, it may cause a fire.

⚡ Operating Temperature

The cell phone operating temperature is between 0° and 35° C (32° to 95° F). Low- or high-temperature conditions might cause the cell phone to change its performance.

When using the cell phone, it is normal for it to get warm. The exterior of the cell phone functions as a cooling surface that transfers heat from its inside to the cooler air outside.

10. FAQ

S.No.	FAQ	Answers
1	How to Add or Remove account in Android?	Settings->Advanced Settings->Add Accounts a) To add an Account: Add Credential to add account b) To remove an Account: Select account that you need to remove->Option->Remove account
2	How to Factory Reset Android phone?	Settings->Advanced Settings->Backup & reset->Factory data reset->Confirm restore From there, Select Format Phone storage for best result. Note: Reset Factory default will remove all user data; do take a backup of your data in PC or on Gmail™.

3	In what scenario does the user have to factory reset Android phone?	<p>In the following scenarios user needs to reset his phone.</p> <ul style="list-style-type: none"> a) Phone not responding b) Phone automatically Restarting c) Erratic behavior of phone d) Bad Battery backup or charging issues e) Apps not working f) Deleted any pre-installed apps by mistake g) Erased customer data & settings h) To remove an account. <p>Note: If the problem persists, please visit your nearest Service Center.</p>
4	How to connect device via portable hotspot?	<p>Please follow the listed steps.</p> <ul style="list-style-type: none"> a) Plug in your USB cable and connect it to PC. b) Settings->More->Tethering & Portable hotspot->Select USB tethering. <p>Let it install all the drivers first and after that you will be connected to Internet automatically. Drivers can be downloaded from our Website: http://gionee.co.in</p>
5	How to connect your device as USB mass storage?	<p>Please follow the listed steps.</p> <ul style="list-style-type: none"> a) Plug in USB cable and connect it to PC. b) Select File copy. <p>Let all the drivers install first and then your Device will be connected as a USB Mass Storage. Drivers can be downloaded from our website http://gionee.co.in.</p>
6	How to add Data Account or APN settings?	<p>All GiONEE Smart phones come with Pre-loaded Internet Settings. User needs to insert SIM and turn the Data Connectivity On. The phone will automatically detect settings.</p>

7	How to do Data account or APN setting if user has edited or erased pre-installed data settings?	There are two ways to resolve it. a) Do Reset Factory Default Setting. b) Settings->Mobile Networks->Access Point Names->Add new APN / Reset to default.
8	How to select Data mode (Auto or GSM or WCDMA)?	Settings->Mobile Networks->Preferred Networks Type->Select Mode as per your need from 4G/3G/2G (Auto), 3G/2G, 3Gonly or 2G only.
9	How to reboot or reset to factory settings?	Power off the phone->Press and Hold Volume up and Power key->Select the option based on your requirement.
10	How to install applications that are not downloaded on Google Play™ Store?	To install applications directly, do following. Settings->Security->DEVICE ADMINISTRATION->Select unknown sources.

11	How to backup contacts and SMS?	<p>(a) For Contact Backup</p> <p>(i) User can take backup on Gmail</p> <p>(ii) Contact->More->Import/Export->Select Source & Destination point to take back-up.</p> <p>(b) For SMS Backup</p> <p>(i) User can take backup on Gmail</p> <p>(ii) Messaging->More->Import/Export SMS->Import SMS Backup from storage or Export SMS to storage.</p> <p>On a device running Android User can take backup of Contacts, SMS, Call log, Calendar with following steps.</p> <p>Settings->Advanced settings->Backup & reset->System Backup and restore->Backup to phone storage</p>
12	Why the actual capacity may differ from the one mentioned on product label?	<p>A certain portion of capacity of ROM may be used for system files and maintenance, thus actual capacity may differ from that indicated on the product label.</p>

COPYRIGHT

All rights reserved. Reproduction, transfer, distribution or storage of part or all of the contents in this document in any form without the prior written permission of GiONEE is strictly prohibited.

Android, Google, Google Play, and other marks are trademarks of Google Inc.