

# User Manual

----verykool SL6010



# Contents

1. APPEARANCE AND KEYPAD OPERATIONS.....	3
2. USING MEMORY CARD AS U DISK.....	4/5
3. WIFI .....	6/7
4. BLUETOOTH .....	8
5. MAIL .....	9
■ 5.1 GMAIL .....	9
■ 5.2 EMAIL .....	10
6. DIALLING.....	11/12/13
7. MESSAGING .....	14/15/16
8. CONTACTS .....	17/19/21
9. INTENET EXPLOR .....	22/23
10. RECORDER .....	24
11. CLOCK .....	24
12. CACULATOR .....	25
13. CAMERA .....	26/27/28
■ 13.1 IMAGE MODE.....	26
■ 13.2 VIDEO MODE.....	27
14. IMAGES .....	29/30
15. MUSIC .....	31/32
16. CALENDER .....	33
17. FM RADIO .....	34
18. SETTINGS .....	35/42
19. NOTICES FOR THE USE OF PHONE.....	42
20. FCC CAUTION .....	43
21. SPECIFIC ABSORPTION RATE (SAR) INFORMATION.....	43
22. BODY-WORN OPERATION .....	43

## 1 . Appearance and Keypad Operations



Functions Description	
1. Menu Key	8. Power Key
2. Home Key	9. Volume Key
3. Back Key	10. Back Camera
4. Front Camera	11. Flashlight
5. Receiver	12. Mic
6. 3.5mm Headset Jack	13. Speaker
7. Micro USB Jack	14. SIM Slot

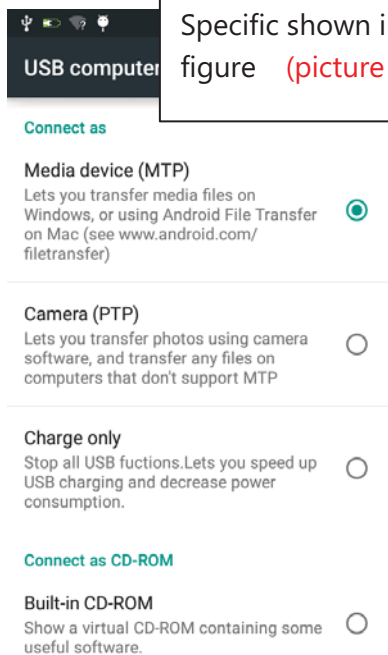
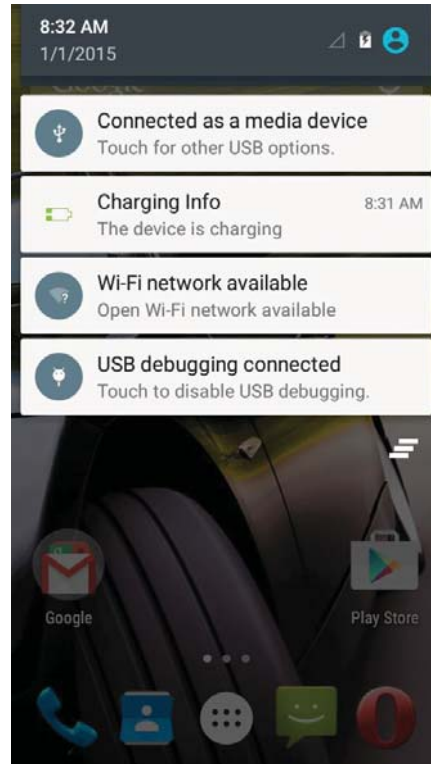
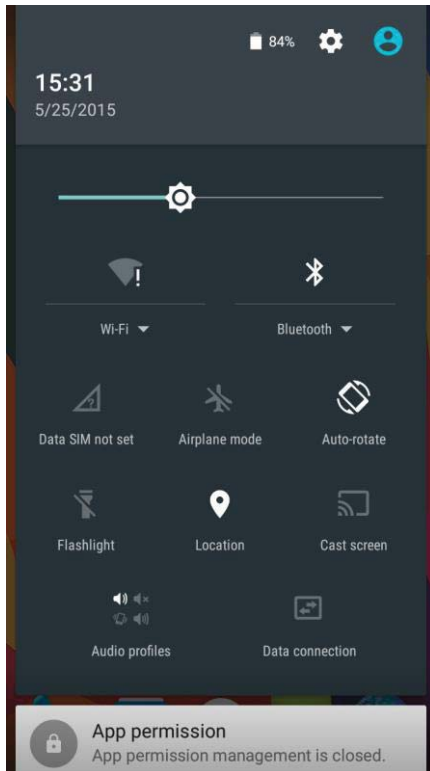
Keys	Functions
home	<ul style="list-style-type: none"> <li>● Press this button to return home from any application or interface.</li> <li>● Press it to open recently opened application window.</li> </ul>
menu	<ul style="list-style-type: none"> <li>● Press it to start the menu, which allows you to perform actions in the current interface or options' menu.</li> </ul>
back	<ul style="list-style-type: none"> <li>● Press it to return to the previous interface, or to close dialog box 、 options' menu、 notification panel or the keypad.</li> </ul>
power	<ul style="list-style-type: none"> <li>● Press it to open the phone' s menu, then you could choose to lock the screen、 turn off the phone, or set it to the silent mode.</li> </ul>
up	<ul style="list-style-type: none"> <li>● Press it to increase the volume</li> <li>● Press it to turn the phone to vibration mode from the silent mode.</li> </ul>
down	<ul style="list-style-type: none"> <li>● Press it to decrease the volume.</li> </ul>
P-Sensor	<ul style="list-style-type: none"> <li>● Cover it, and then the phone' s backlight will turn off</li> </ul>
front camera	<ul style="list-style-type: none"> <li>● Entering the camera interface, switched to the front camera can photo yourself.</li> </ul>

## 2. Using Memory Card as U Disk

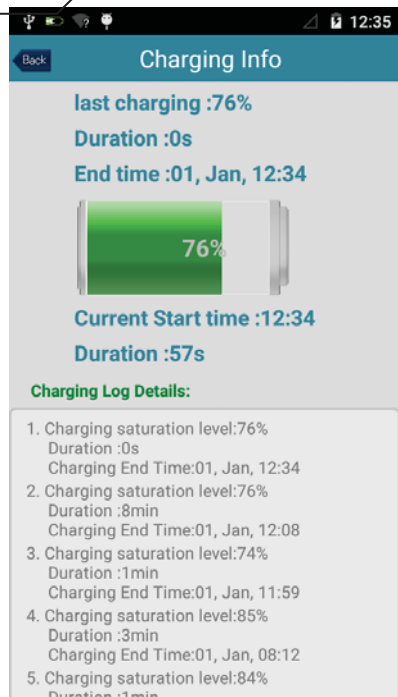
If you want to send music, pictures or other files to the phone's memory card from the computer, you should set memory card as u disk first.

Set memory card as u disk

- 1) Connect the phone to the computer with USB cable. The notification icon will appear in the status box.
- 2) Use USB mobile transmission line will connected to the computer
- 3) In the notification panel, touch USB is connected , then touch the USB connected as a media device



Specific shown in the following figure (picture 1.2.3.4)

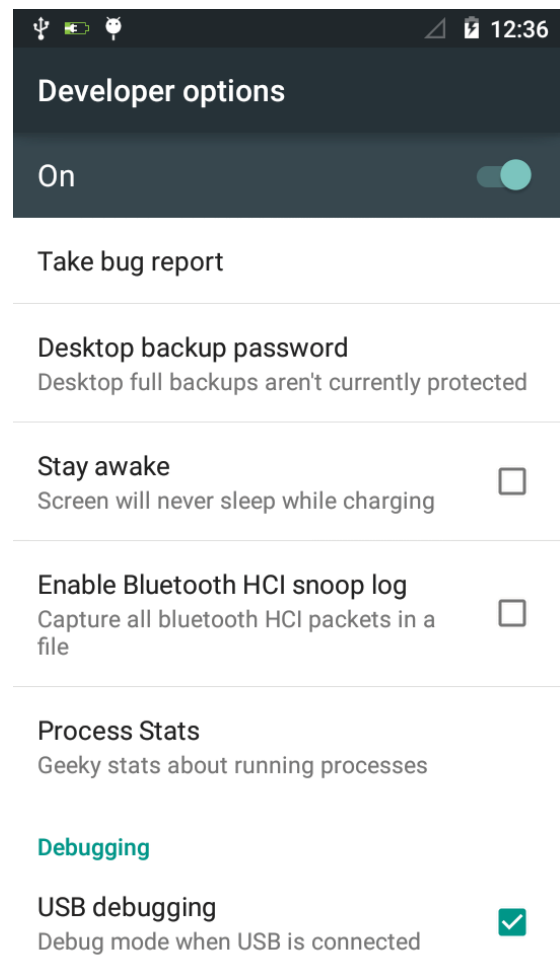
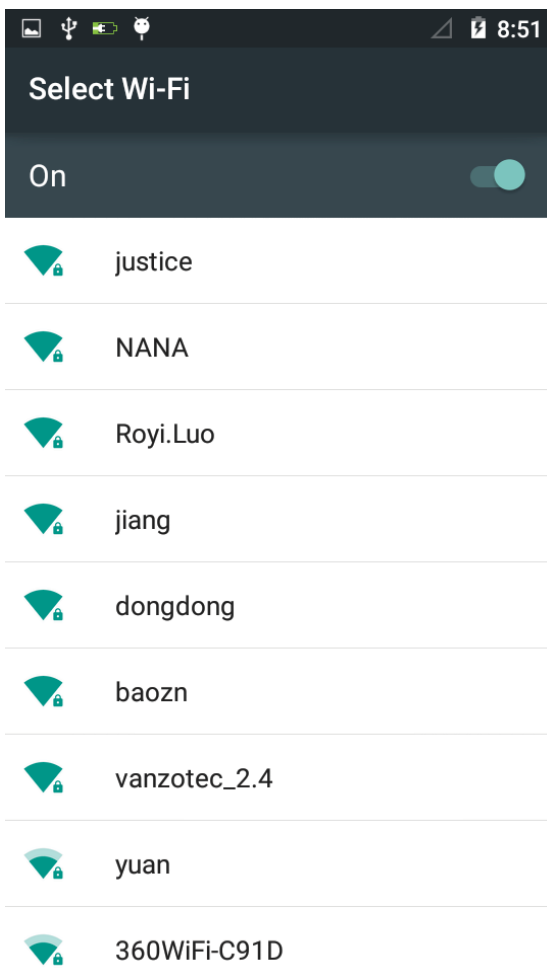


1: connected as a media device

2: Charging info

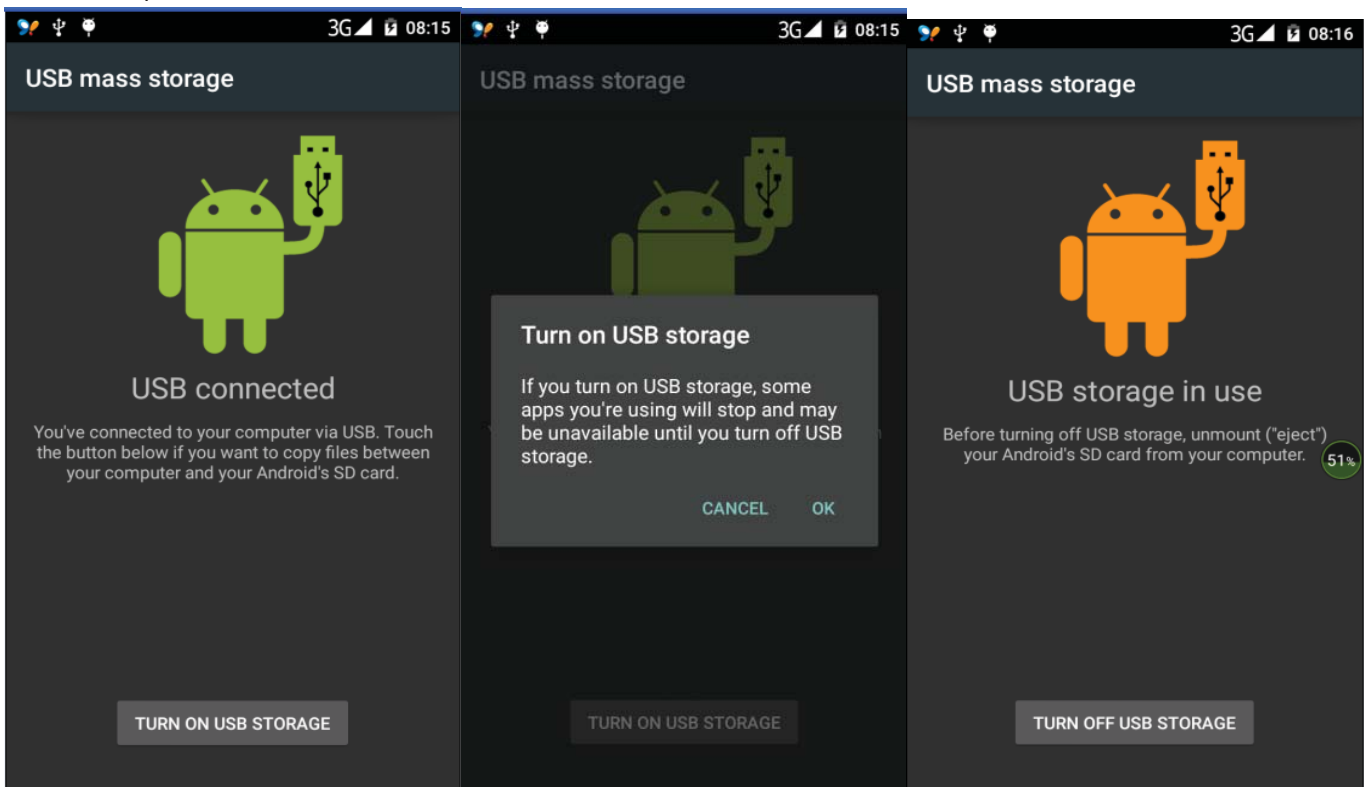
3: Wi-Fi network available

4: USB debugging connected

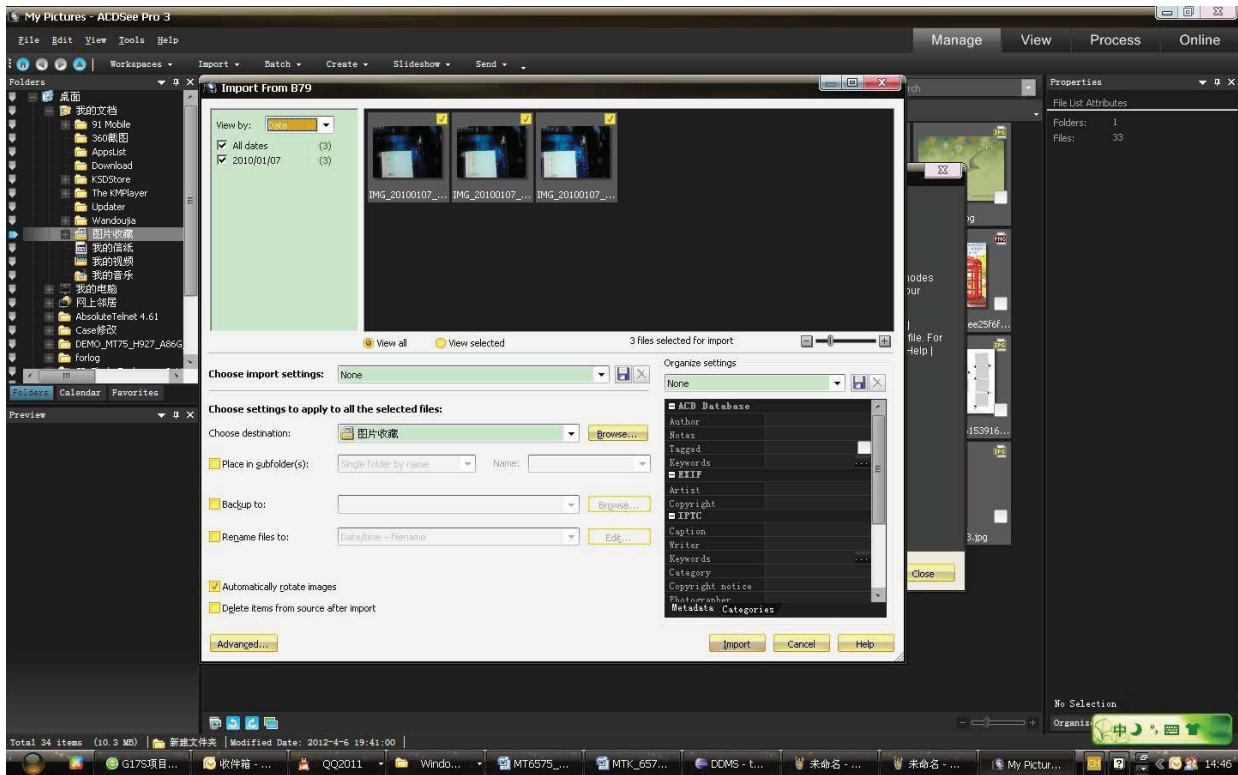


3:

- 4) Insert the SD Card.  
Open USB connected.



2) After the connection, images captured on camera can be directly viewed on the PC.



- Notice: To operate U disk normally, each PC operating system has different requirements.
  - 1) WIN7 Can directly use
  - 2) XP update windows media player to 11
  - 3) Install wpdmtp.inf driver
  - 4) Vista Unconfirmed
- Notice: On the PC operation assistant tool, such as mobile phone, the USB debugging must be open.

### 3. WiFi

Wi-Fi provides as far as 300feet (100M) range of wireless network access. If you use cell phone to connect Wi-Fi, you should connect to the wireless access point or 「hot spots」.

- Notices: The availability and coverage of Wi-Fi signal depend on the number, infrastructure and other objects penetrated by the signal.


Open Wi-Fi and to connect to the wireless network

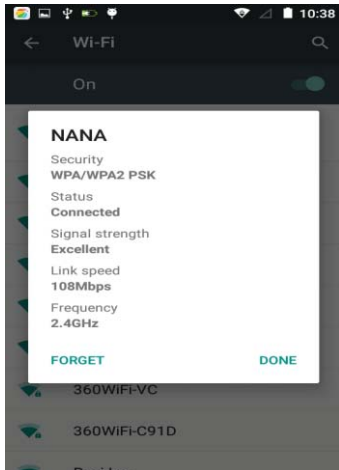
- 1) Press home>menu, then touch settings>Wi-Fi and internet
- 2) Select the Wi-Fi box, to open Wi-Fi. Phone will automatically scan for available wireless networks.
- 3) Touch Wi-Fi settings. Then a list of Wi-Fi network will show the founded network name and security settings. (Open network or WEP、WPA/WPA2 with password).If you enable the notification in Wi-Fi settings, the status box will show this

icon (  ) when open available wireless network are found.

- 4) Touch one of the Wi-Fi choices to connect the network. When you choose open network, phone will connect to it automatically. If you choose WEP、WPA/WPA2 with password, you should type the password first, then touch to connect it.

- Notices: when the phone is connected to the wireless network,

The status bar will show this Wi-Fi icon (  ), and the approximate signal strength (the number of lit bars). If you touch the connected network, it will display the name of Wi-Fi network, status, speed, signal, strength, security, information and IP address.



If you want to delete the wireless settings, please touch "not reserve" as in the picture. If you want to connect to this network, you should re-enter these settings.

- Notices:

Unless you choose not to reserve the network, there is no need to re-enter the corresponding password when next time connecting to the previously encrypted wireless network. Wi-Fi will search automatically, that is, phone won't need to perform additional steps to connect to the Wi-Fi networks.

- Connect to other Wi-Fi networks
  - 1) In the interface of wireless and network, touch Wi-Fi settings. The Wi-Fi networks found will show on the Wi-Fi network list.
  - 2) Touch other Wi-Fi networks, and then you can connect to this network.
- **Notices:** in addition, mobile phone can also surf the Internet by GPRS. Our current SIM card GPRS will open after the default boot. Users can manually choose to open data connection. When using a single card, use drop down menu on the status bar, touch "data connection". When using two cards, go to "Settings > SIM card > cellular data > select SIM1 or SIM2", on the drop down menu on the status bar touch "data connection", open the current selected SIM card data connection, and then touch "data connection". Close this SIM card data connection.



## 4. Bluetooth

Turn on Bluetooth so the phone can be detected

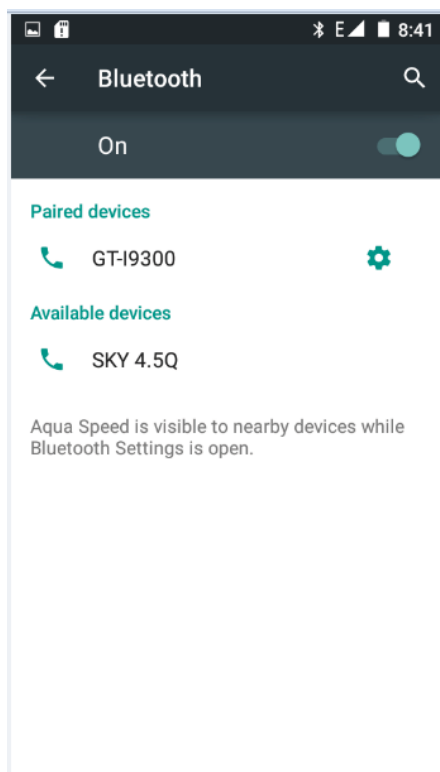
- 1) Press home>menu, then touch settings.
- 2) Touch wireless and internet, then choose Bluetooth box to open the Bluetooth function. After Bluetooth is turned on, the

status box will show this icon (  ). Touch “scan for devices” to start scanning for all devices within range.

- 3) Touch Bluetooth settings, all the devices found will display in a list under the icon.


(When Bluetooth device is open and visible to nearby equipment, other equipment can search and find your device as long as their Bluetooth is turned on. Other devices can be detected at the same time, you can search for other equipment and connect.)

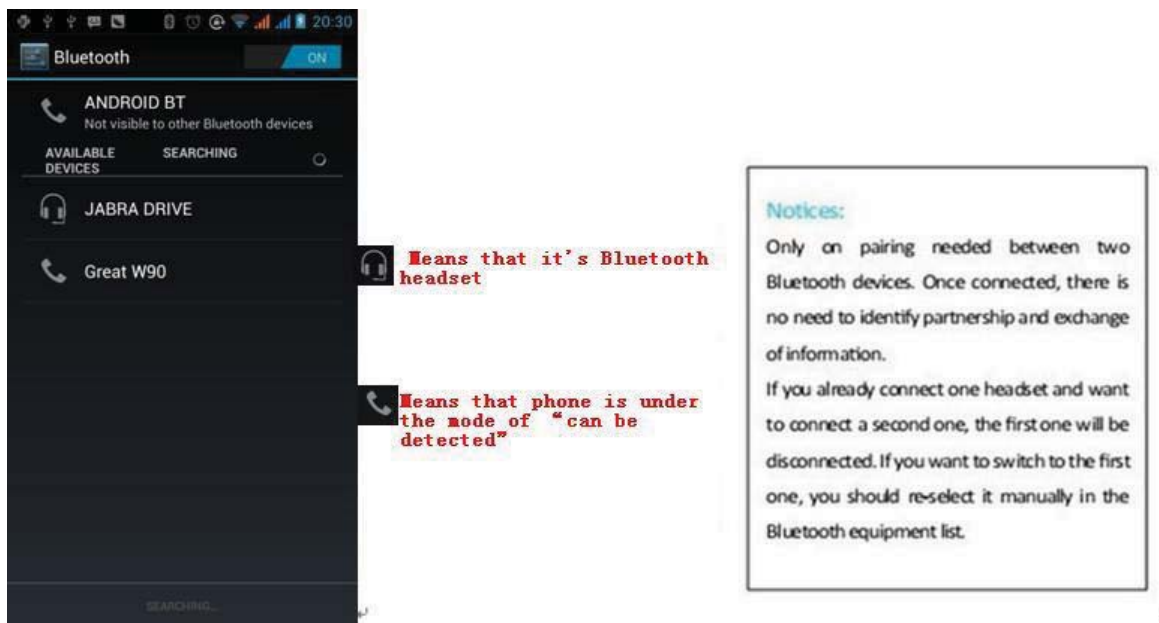
**After a device is paired, the system will show the paired device and other equipment available**



- Pairing and connection of Bluetooth headset
  - 1) Press home>menu, then touch settings.
  - 2) Touch wireless and internet>Bluetooth settings, then select Bluetooth box. Your phone will scan for the Bluetooth devices within range and show the found devices in a list under the icon.
- Tips:
  - a. If the list can't find your equipment, touch scanning equipment to re-scan it.
  - b. Make sure that the devices wanted are under the detected mode.
- 3) Touch headset in the equipment list to finish the connection.

- Notices: generally Bluetooth devices need password to be paired, 「0000」 is often used as the default password.

4) The pairing and connecting status will show under the headset in the Bluetooth devices list. When the headset is connected to your phone, the status box will show this icon (  ) which means it is connected. Then you can use the headset to make or receive calls.



- Cut the connection to the Bluetooth
  - 1) Press home>menu>settings>wireless and internet>Bluetooth settings.
  - 2) In the list of Bluetooth equipment, touch and hold the connected hand-free headset.
  - 3) Select “cancel the pairing”.
- Bluetooth proximity sensor

After pairing the two devices, you can test out if the signal is strong or weak by the Bluetooth proximity sensor device

## 5. Mail

### 5.1 Gmail

- Create an electronic mail account

Select mail> settings. You can activate or edit existing e-mail accounts as well as create a new e-mail account.

- a. Select mail, Google account setting interface appears. Then touch ‘next step’ > create account>enter name, last name and e-mail account.
- b. Google servers determine whether the name can be used, if so, new interface appears prompting you to enter password, then judge the password’ security, users who doesn’t meet the requirements need to re-enter the password.
- c. After successfully registering a new Gmail account, a message will be created automatically for testing.

- Loading mail account

a. Open Gmail skip introduction screen>loading interface appears >select load

b. Enter name, password then load


E-mail account initialization, prompting "login successful" All Google accounts will be synchronized.

- Creating and sending ,mails

When creating mails, select mail > creating mails. Enter the address (recipient), theme and contents. Press MENU to 'append'、'Add Cc/Bcc' , select send or discarded.

- Receive mails



When you receive new mails, you will hear a tone and the status box will show this button . Press Menu > 'refresh' to refresh and update the number of the unread mails in a proper way.

- Delete mails

When loading a mail account, if you want to delete it, you need to restore factory settings. When loading a second one, you could press the menu button to delete it.

Notices: many functions depend on Gmail Account, for example: Electronic Market、Google Talk、Sync Contact and Calendar.

## 5.2 Email

- **Load Email.**

c. Open network connection,

d. In setting the account interface, input the correct email address and password and click next. Mobile phone will automatically complete the sending and receiving server Settings, Pop-up mail, find frequency, and user Settings interface. Complete Settings, click next.

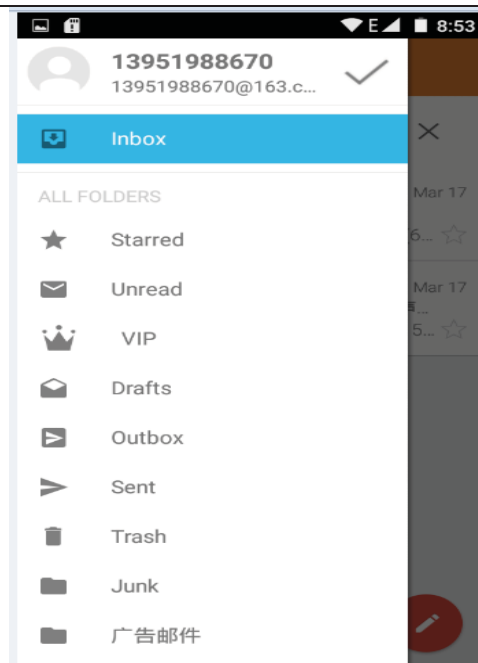
e. For account creation name, the editor of the law that email user name, and click next. Complete set, synchronous mailbox.

- Create and send Email

When creating mails, select mails > create mails. Enter the address (recipient), theme and contents.

Press MENU you could 'append'、'Add Cc/Bcc', select send or discarded or save as draft.

- Check the Email files
- **Click the inbox to the left of the small buttons, list all the folder options**

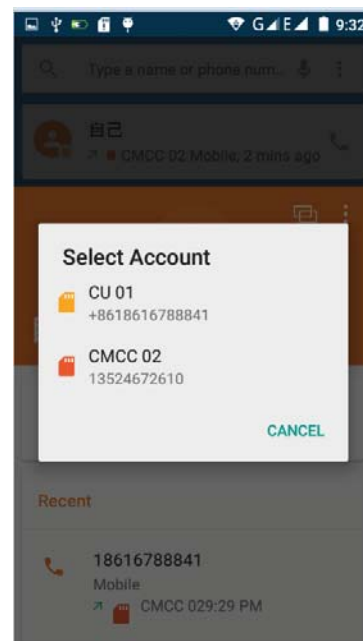
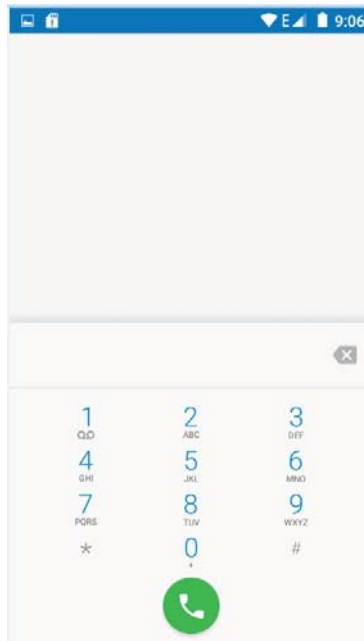
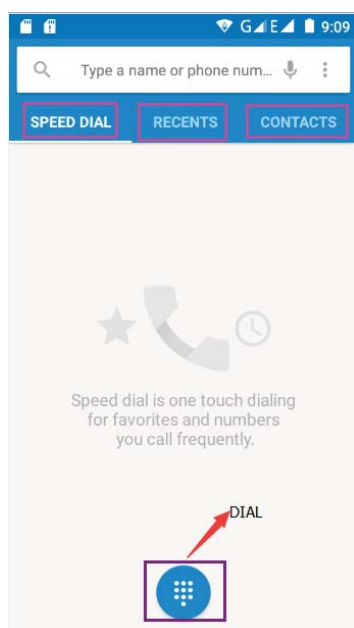


## 6. Dialing

When the internet server icon appears on the screen, you could dial or receive call. The signal bar on the top right corner shows the strength of network signal (The signal with the strongest signal).

- Start dialing

Open application's main menu>dial >Dial the keyboard. You could choose SIM1 or SIM2 to do the dialing.



- Dialing

On the dialing Keyboard , enter the phone number , and then click the dial key. After that, choose one SIM card or

internet call. If you need to call an extension, you could click the “dial pad” in the bottom of the screen to open the interface or press menu key to select “delay 2 seconds”, and then enter the number of the extension.

On the dialup keyboard input number, click Menu to IP dial-up or speed dial

- Video call: video call usually refers to the Internet and mobile Internet (based on 3 G Internet) call through the phone between the speech of the real-time transmission and image (photographs, items, etc.) as a way to communicate. Only 3 G to support this function. Input a number, click video dial-up, after each other answers the phone, you can start the video call.
- Telephone calls in the call log

Every telephone number called and received in “SIM1、SIM2” will be reserved in the phone’s call log menu. Each call recently recorded will show “SIM1 or SIM2”

All numbers in the call log can be dialed by clicking the button “dial” on the right side of the screen.

When number list appears, click it to show details; long press to dial via “SIM1 or SIM 2.” You can also edit, delete, save the number or do other operations.

- Receive callings

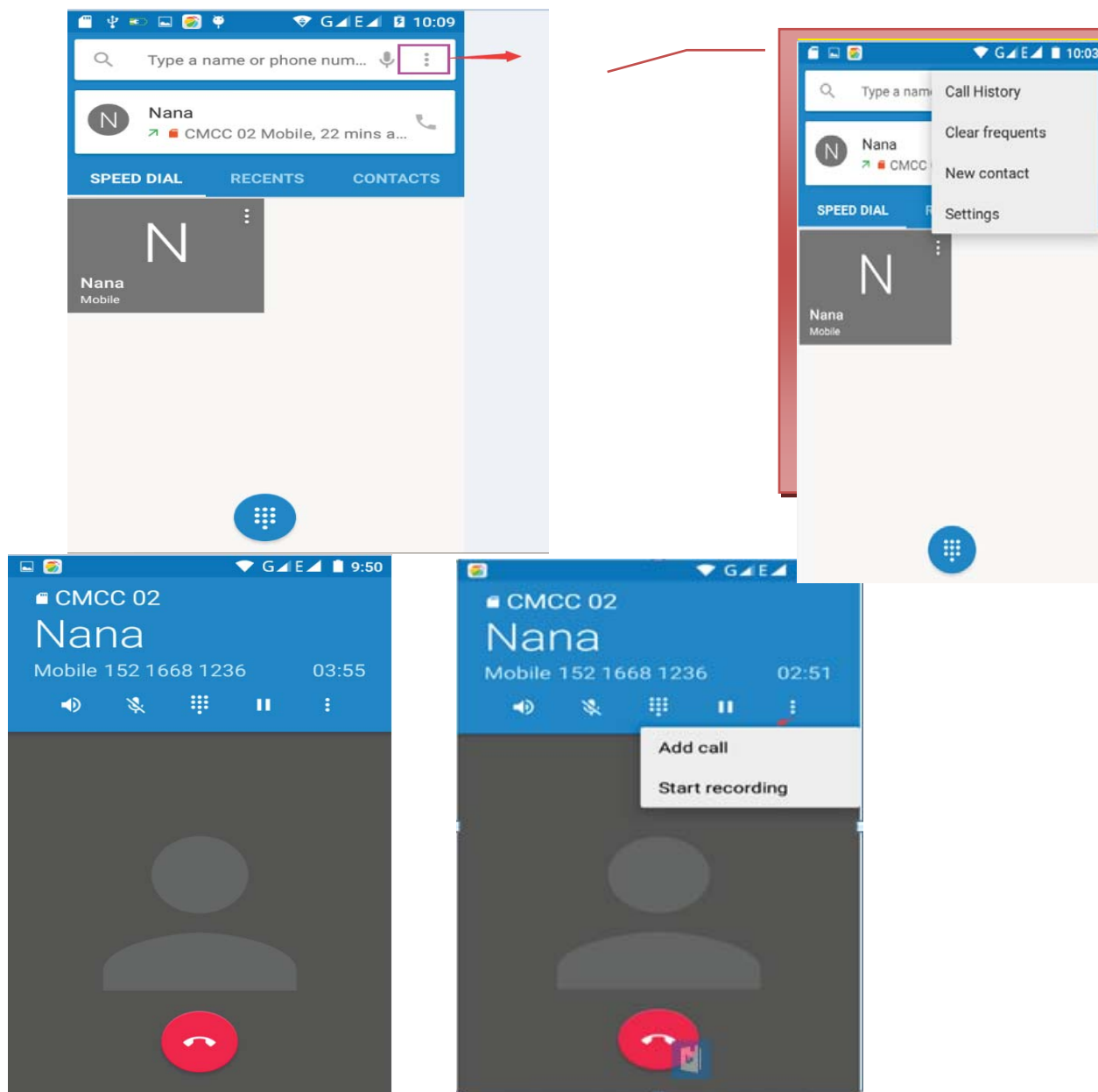
When a call comes in (top left will show from which SIM card) press “Answer” and slide towards the right to receive the call.

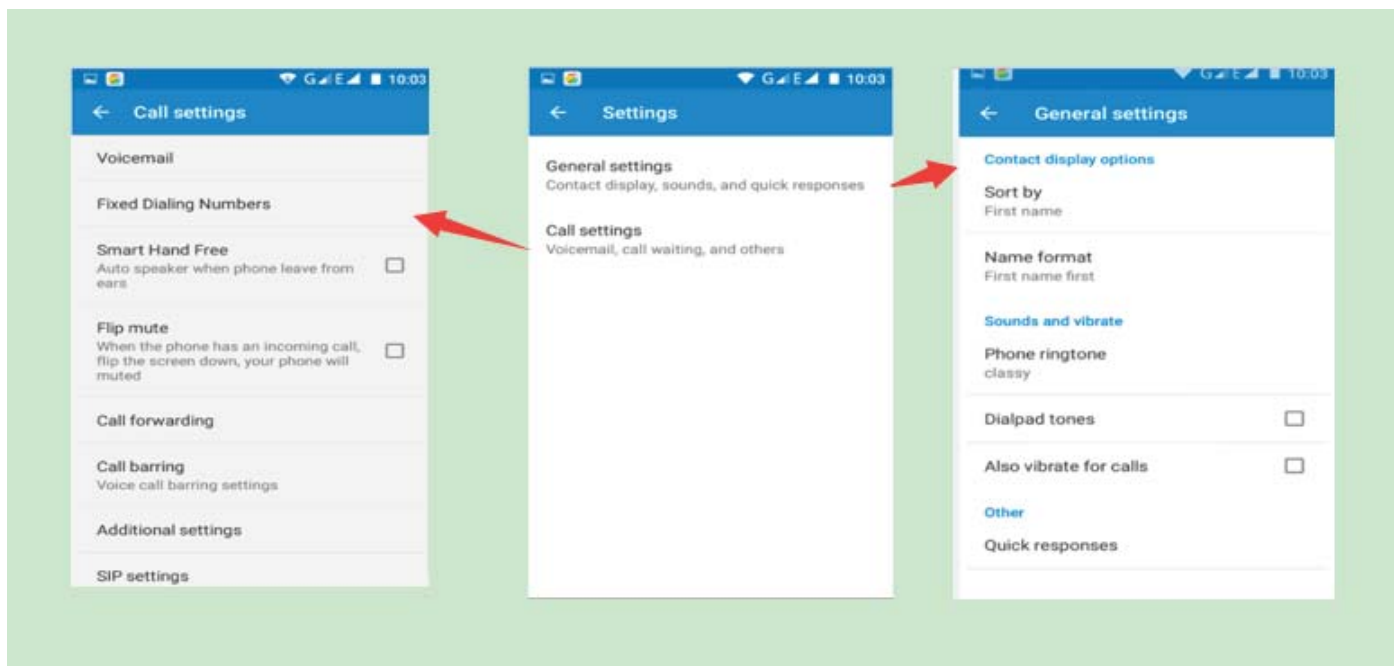
- Refuse to answer the phone,

When a call comes in, hold down the "call" button sliding it to the left to decline a call.

When a call comes in, hold down the "call" button sliding it upwards to reject the call and select a message. Choose message content, to send the caller the corresponding text messages.

- Proximity sensor
- The backlight will adjust automatically, according to the distance between phone and human body.
- During the call if the phone is close to the ear, the backlight will turn off automatically, which could save battery life and prevent inadvertently touching.
- Two-way call/multiparty call(conference call)
- Notices: this function requires that multiparty call feature be activated on the SIM card.
  - 1) While on a call
  - 2) Click “Add calls”, dial another call or receive another call. Phone should default to open "call waiting" (settings–dialing settings–other dialing settings. After both are connected, you could view the status of the call.





- Telephone recording

During the call, more>start record, to record the dialog of the call.

- 1) settings>set other functions of the call in the dialing settings, for example: Call Transfer– after all the settings finished and turned on, you could transfer the call to a certain number.
- 2) In settings>dialing settings >other dialing settings, open “call waiting”. After turned on, you can receive another call while you are on an existing call. The answering and rejecting functions are just like the ordinary phone.

## Call settings

### Voice Call

- 1) Voice Mail: The voice mailbox settings of the input voicemail number.
- 2) IP prefix number: Setting the different IP prefix numbers for each SIM card.
- 3) Call forwarding: Can set respectively to a SIM card when the line is busy and no one has to receive.
- 3) Call barring: Can set call restriction to each SIM card respectively.
- 4) Additional Settings: a.My phone number b.Call waiting.

### Internet call

- 1) Account
- 2) Use Internet calling

### Other Settings

- 1) Fixed Dialing Numbers
- 2) Minute Reminder: Turn on minute reminder at 50s of every minute.
- 3) Quick Response: Can edit the content of the text messages sent when a call is rejected.

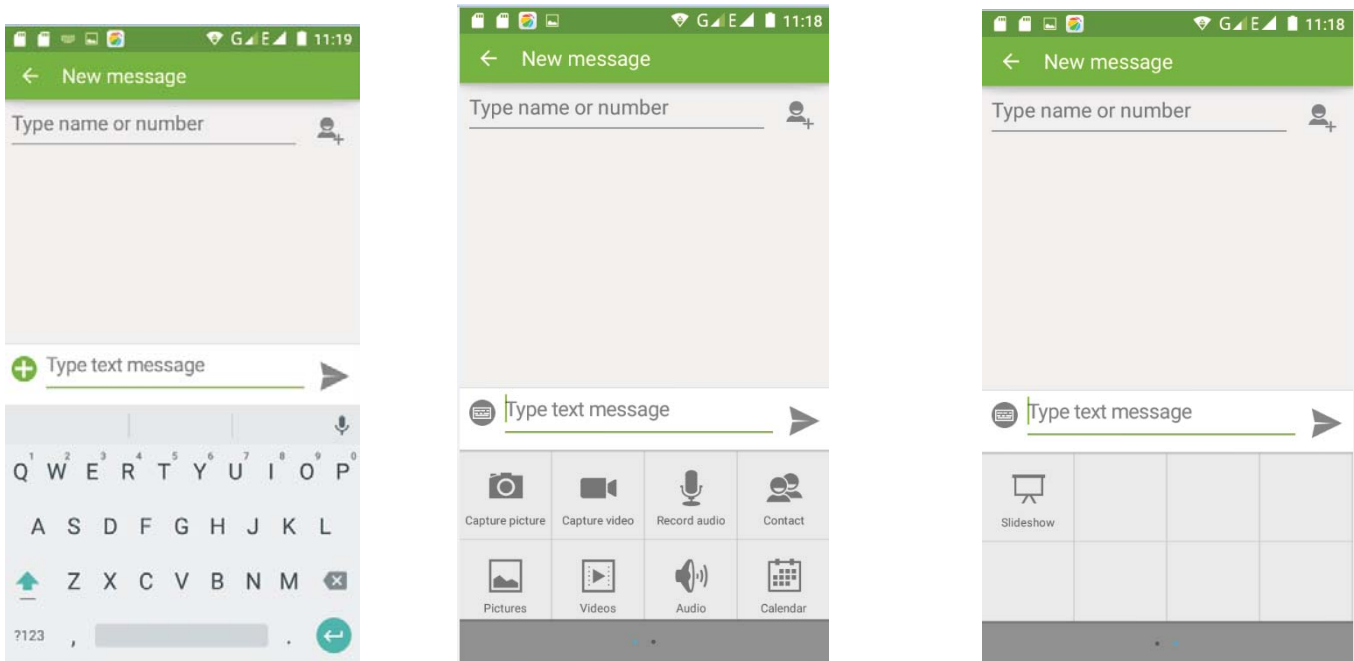
## 7. Messaging

- **Important:** the message title of this phone is the phone number, will be reserved in a similar way for of dialog, instead of the usual folder structure. Messages with blue background are those received, and messages with white background are those sent.
- **Send SMS to certain phone number**
  - 1) Press home>messaging, touch “new messages” .
  - 2) In the interface of “edit”:
    - a. Click “recipient” box to start input method, you can also click “enter” box to start input method, and enter characters.
    - b. Click the button of “send from SiM1 or SIM2” to start sending.
    - c. When the receiver and the input are not empty, click the send button to send the message.

- **Send MMS to certain phone number**

When creating message, if it is defaulted to SMS, it will be turned to MMS when following operations are done. You can send MMS via clicking “send” after editing.

- 1) In the "writing" screen, press the Menu button, click "add theme". It will automatically turn into MMS message.
- 2) Click on "write" interface then "plus" icon on the left to add an attachment. After adding the attachment the message will be automatically converted into MMS.



- **Send messages to multiple numbers**

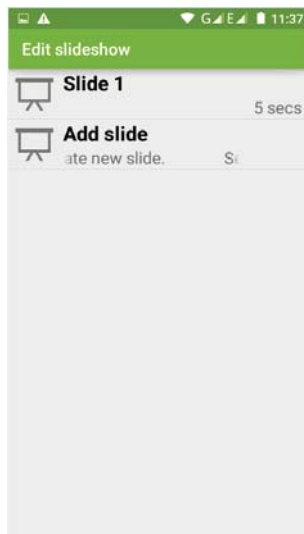
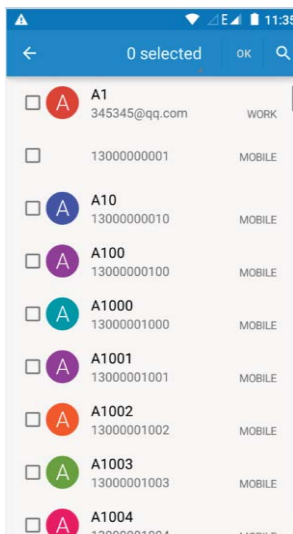
Enter multiple numbers in the “receiver” box dividing each number by a comma.

Click on the plus icon on the right side to choose a contact group in the address book.

Notices: At present the phone can only support up to 100 recipients.

When the number of contacts added is more than 100, there will be a prompt telling you the "recipient" quantity is too much, and the contacts will be added unsuccessfully. You must manually add again.

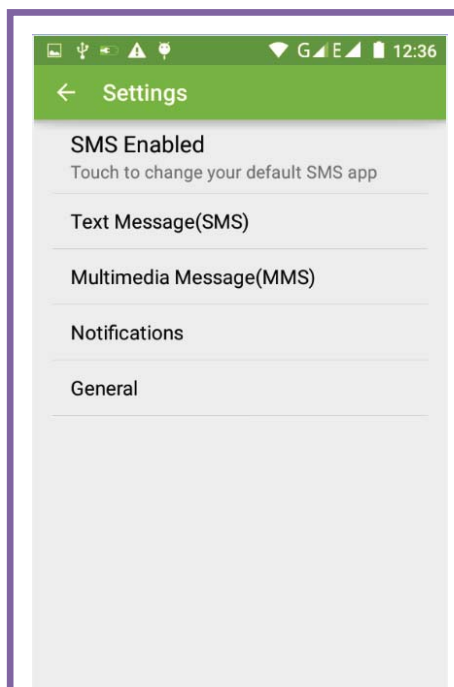
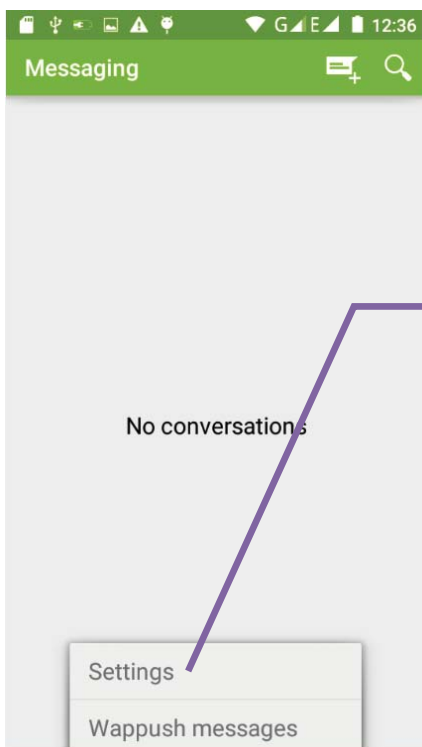




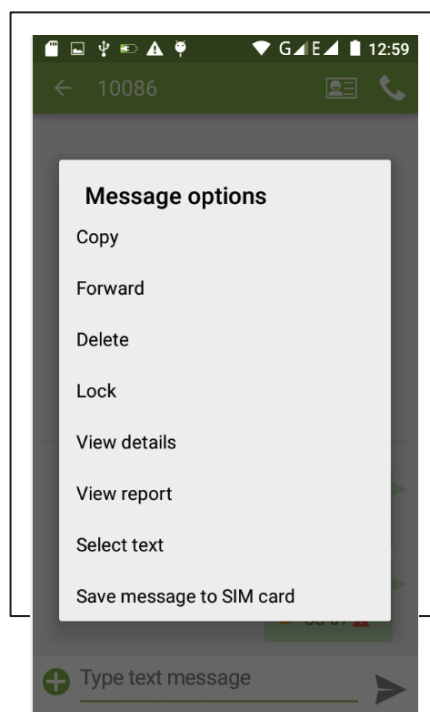
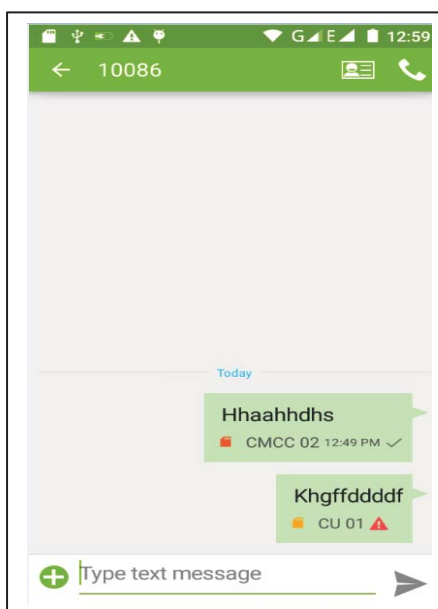
#### Notices:

- If you want send MMS with many pages, you should select "append PPT" in the "append" interface.
- You can append 10 pictures, with the form of GIF, JPEG.
- Click "adding themes", **the box of "theme" will appear under the box of "recipient" and turn the message to MMS automatically.**

- Information edit Menu with Menu functions

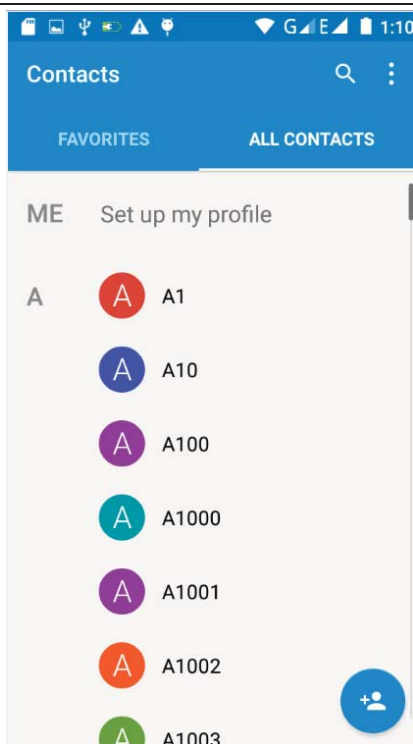


- 1) When the message is sent successfully, SIM1 or SIM2 sends a message of the time it was sent and checkmark will show next to it.
- 2) When message sending failed, a red triangle with exclamation will appear. When editing information, access other functions from the Menu button.
- 3) Click on an option to can carry out selective operation



## 8. Contacts

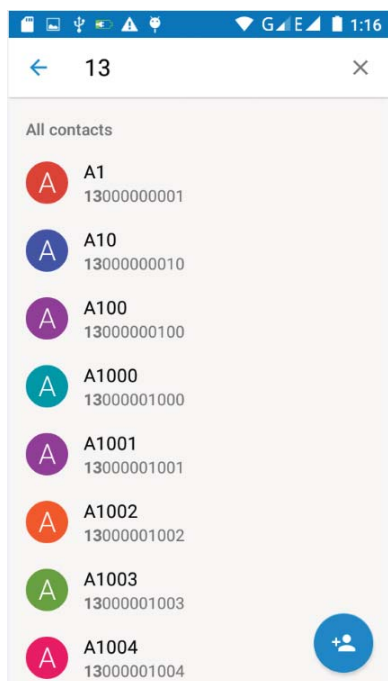
- Open the menu of applications>contacts  
The mobile phone contacts and SIM card contacts by default will display in alphabetical order according to the contact's initials.



- 3) Click Search Icons, to enter the contact search interface.

Enter the list of Numbers or letters or part of the name that will be shown in search results.

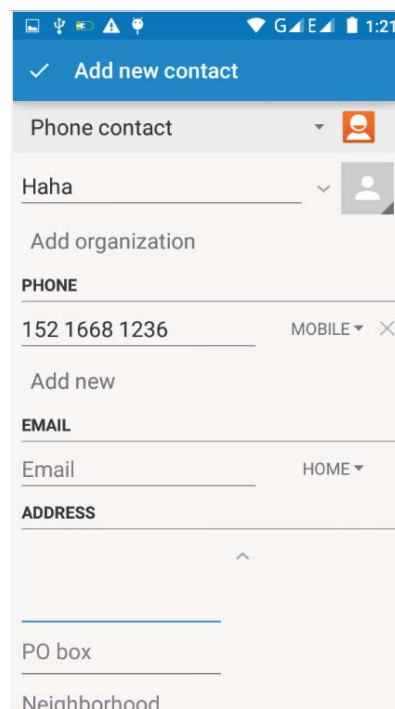
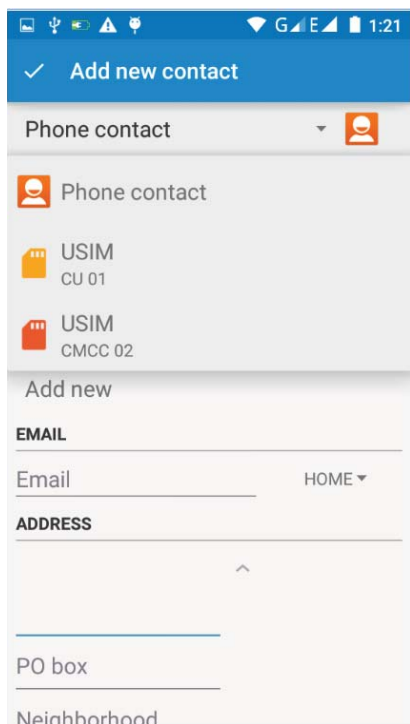
If the search finds no matches, the contact interface will show that no contacts were found.



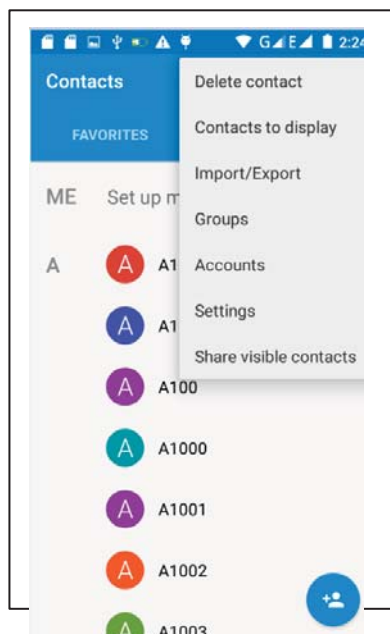
- 3) Click “Add Contact” Icons to create New Contacts

Select save contacts to phone or a SIM card in the contact editing interface.

You can edit contact head, name, telephone number, group, save to and more. Then click "finish".



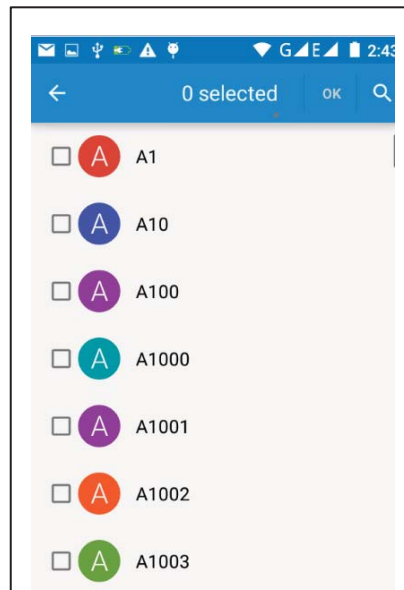
4) In contact interface, click on the Menu button



a. Menu >Delete contacts

When "All" Icons are checked, click the delete button to delete all the contacts, including cell phone and SIM card contacts.

You can check one or more contacts and click the delete to delete the selected contacts.

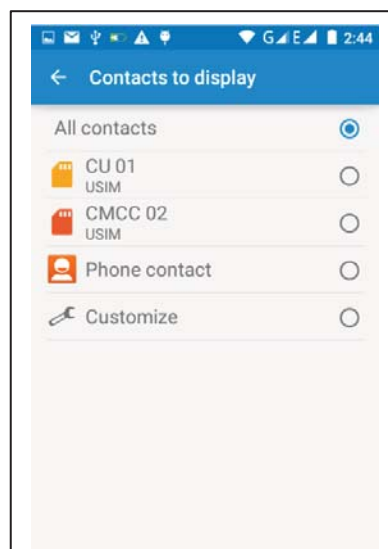


b. Menu > Contacts to display

You can choose all contacts, one SIM card contacts

contacts

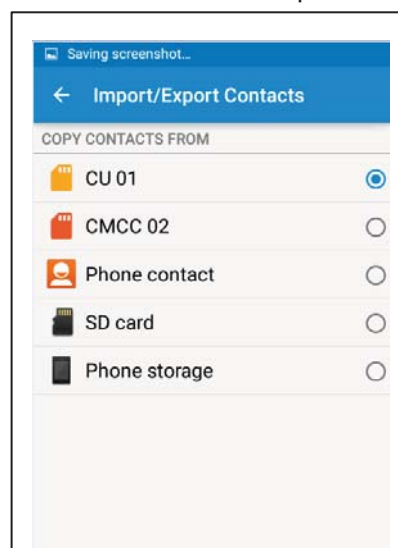
Choose whether or not to display all contacts or each individual contact.



c. Menu > Import/export

In the mobile phone, local contacts, SIM card contacts, and SD card contacts can be copied from one location to another location.

First choose the "copy source" and then select the next step. Select copy contact to, to complete the contact's copy.



## d. Menu &gt; Groups

Click on the "group" icon to add a new group.

In "the group name" column input group name. In "type in the contact's name" column input contact key word to search all contacts and add to the group. Click "finish".

1) In a group, click on the Menu button, Menu functions

2) Menu>Update

You can modify the group name, delete or add group contacts

3). Menu >Delete

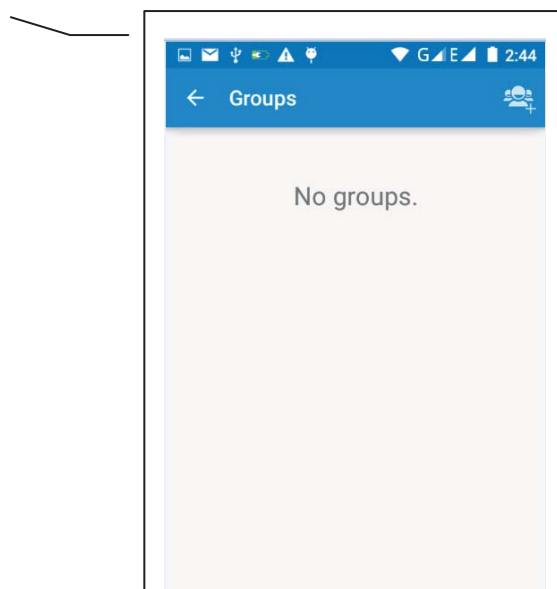
You can delete the group. You will not delete the contact itself.

4). Menu >Send messaging by group.

Automatically adds the group contacts to the address bar recipients

5). Menu >Send Email by group

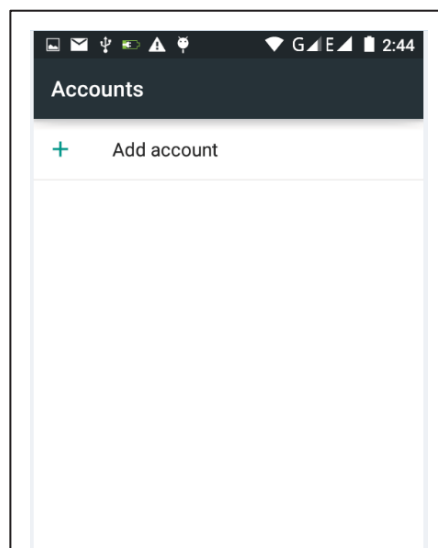
If contact group have the same email address, the new mail will automatically add the E-mail address in the receiver address bar



## e. Menu &gt;Accounts

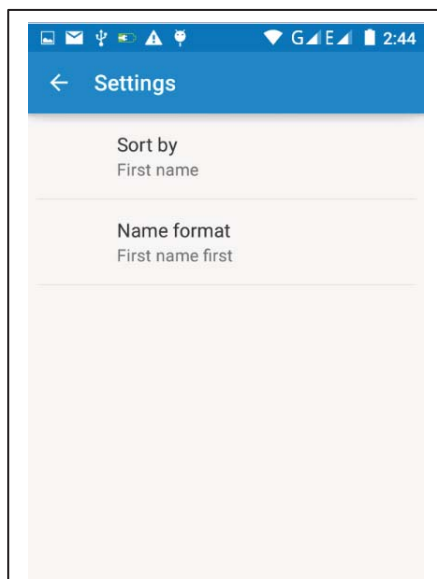
Account and synchronization. Set rout automatic synchronization.

can choose background data and



## f. Menu &gt;Settings

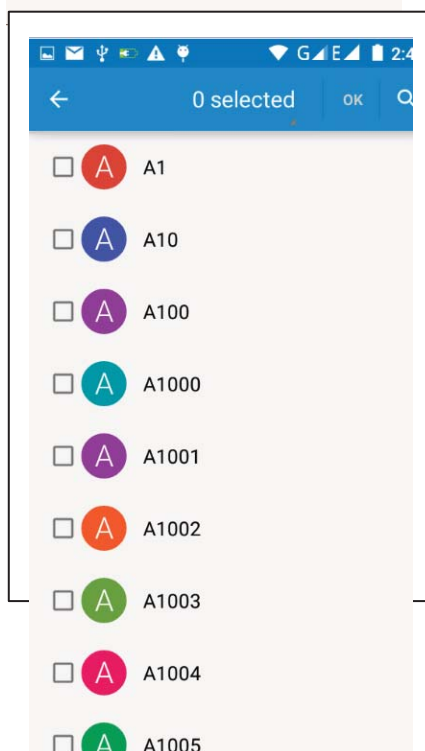
Set up sorting and the format of the name



## g. Menu &gt;Share visible contacts

All contacts can be imported in

both, email, text message or MMS share



## 9. Internet Explorer

Internet explorer

- 1) In the browser screen touch input URL address bar.
- 2) Using the keyboard input web address. As you are entering the address, if the address you entered is in line with a web address, the web address will appear on the screen. You can touch the URL to go directly to the page or continue to enter URL.
- 3) When browsing the page, access the menu functions from the Menu button
  - a. Menu >Refresh  
Refresh the current browsing web pages
  - b. Menu > Stop  
Stop the current loading state of a web page

**c. Menu >Home**

If you don't have it set, it will use a preset site. The default home page is the page navigation

**d. Menu >Save to bookmarks**

Will save the address of the current window as a bookmark. Click the bookmark list of bookmarks, open the bookmark URL.

**e. Menu >Close**

Exit the browser or minimize the browser.

**f. Menu >Save for offline reading**

Automatically save the current page and content, in order to browse next time.

**g. Menu >Share page**

Select Bluetooth, email, SMS or other ways to share the current web page

**h. Menu >Find on page**

Search the current web pages

**i. Menu >Request desktop site**

Browse the pages in the form of PC

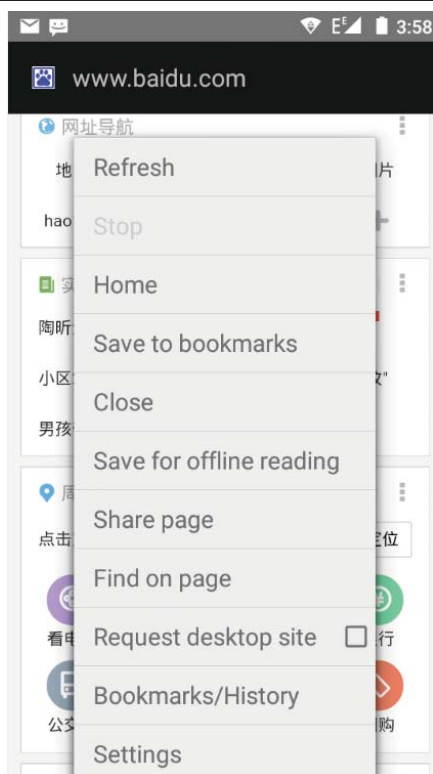
**j. Menu >Bookmarks/History**

Switch to the bookmarks/history/save the web interface

**k. Menu >Settings**

Browser contains a variety of Settings





### Browser Settings

- 1) general Settings, including home page set functions such as below.
- 2) privacy and security, including clear historical record, clear the cache, and other functions
- 3) auxiliary functions, including size, click operation scale, and other functions.
- 4) advanced, including web browsing, page adjustment, plug-in enabled, and other functions.
- 5) bandwidth management, switch whether to load the picture when loading the page.
- 6) lab, including open fast control and full screen display function.

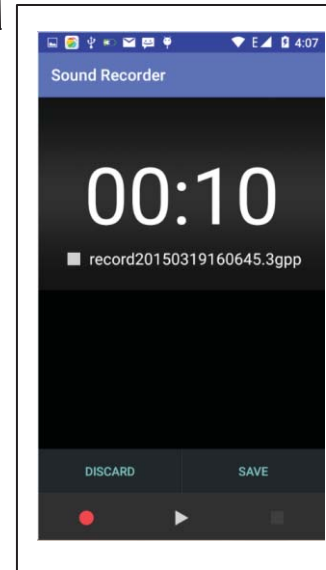
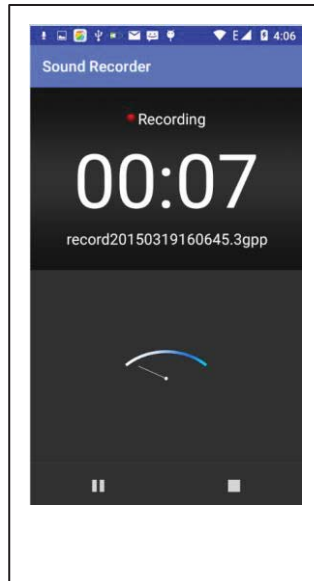
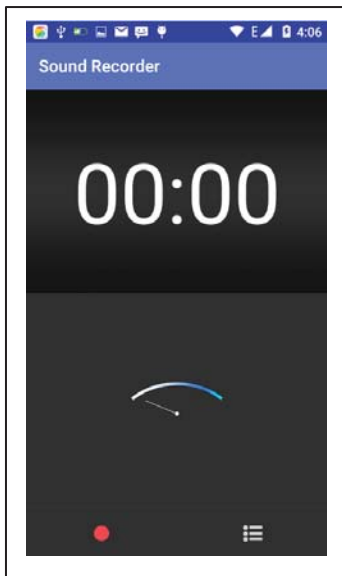
## 10. Recorder

Recorder can record voice, and send it quickly via Bluetooth or MMS as well as set it as a ring tone.

- Notices: recorder can only save the audio files as AMR format.


- 1) Click the recorder application.
- 2) Keep the phone's microphone near the voice source.
- 3) Click record to record voices, to stop or to access Recordinglist.

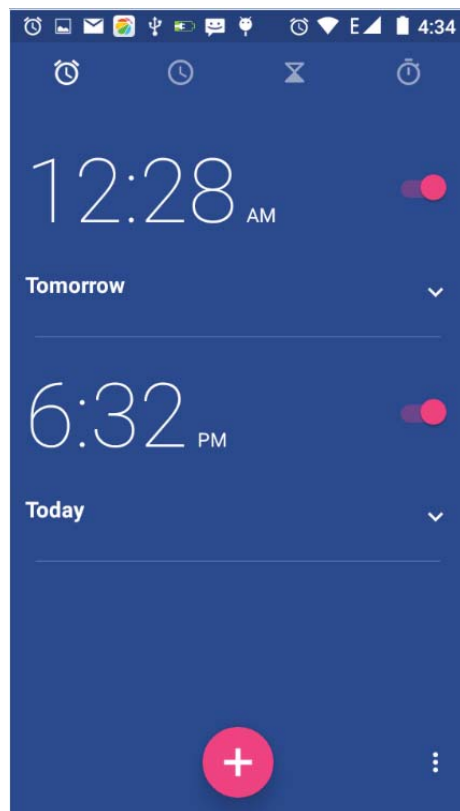
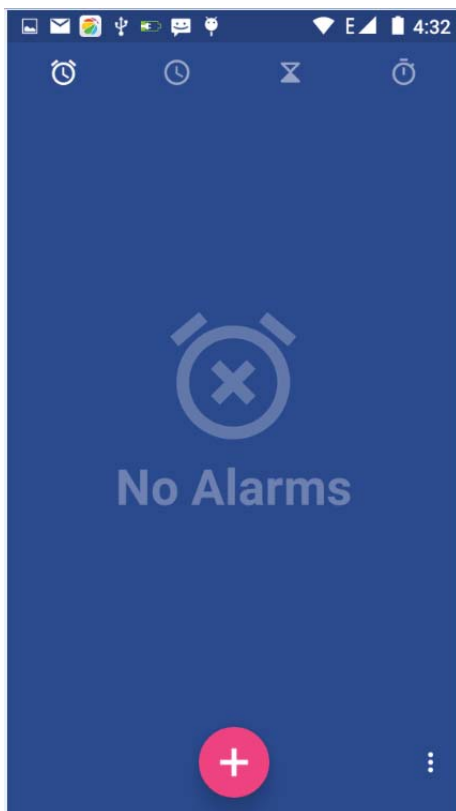
All recordings save in my recording folder in the default music program.



## 11. Clock



1) Open the menu of application, click , to access the alarm clock Settings interface



- Alarm

After functions set, when the phone reaches the set time it will alert you by ringing or vibrating to achieve its function.

Press Menu to add alarm, you can also add it from the adding interface. You could set the alarm according to your needs.

In the interface of alarm will show three closed alarms (two alarm clocks are Monday to Friday 8:30,9:00) .

Edit

You can edit the current alarm, you could edit time、ringing tones、vibration、repeat form and tabs.

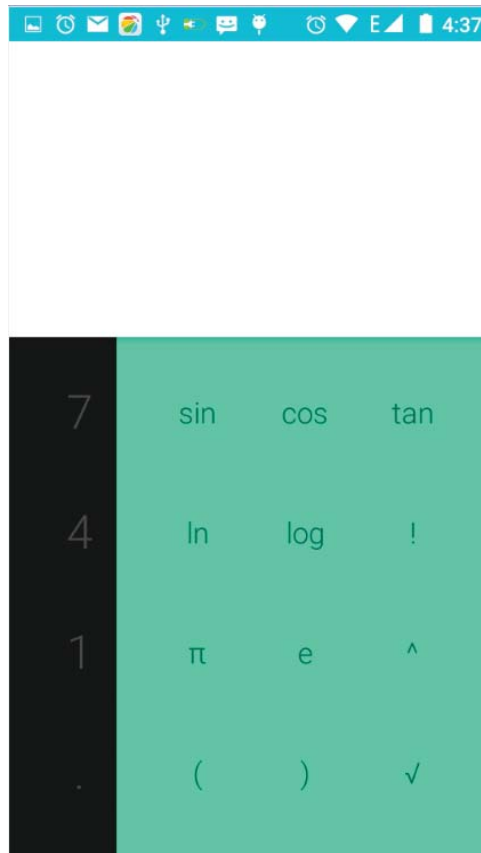
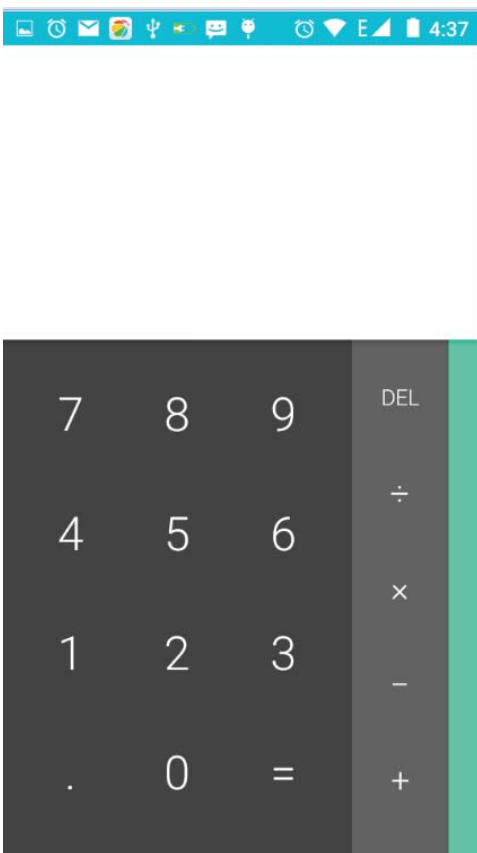
## 12. Caculator

### Calculator

This function can turn your phone into calculator, it can do simple calculations.

- Touch the number keys to make it appear in the blank box.

In the interface of calculator, press MENU button or hold down the screen to the left to access the advanced panel.



## 13. Camera

### 13.1 Camera

- Prior preparation

Install memory card before using the camera or video camera. All your photos or videos taken by the phone are stored in memory card.

- Open camera

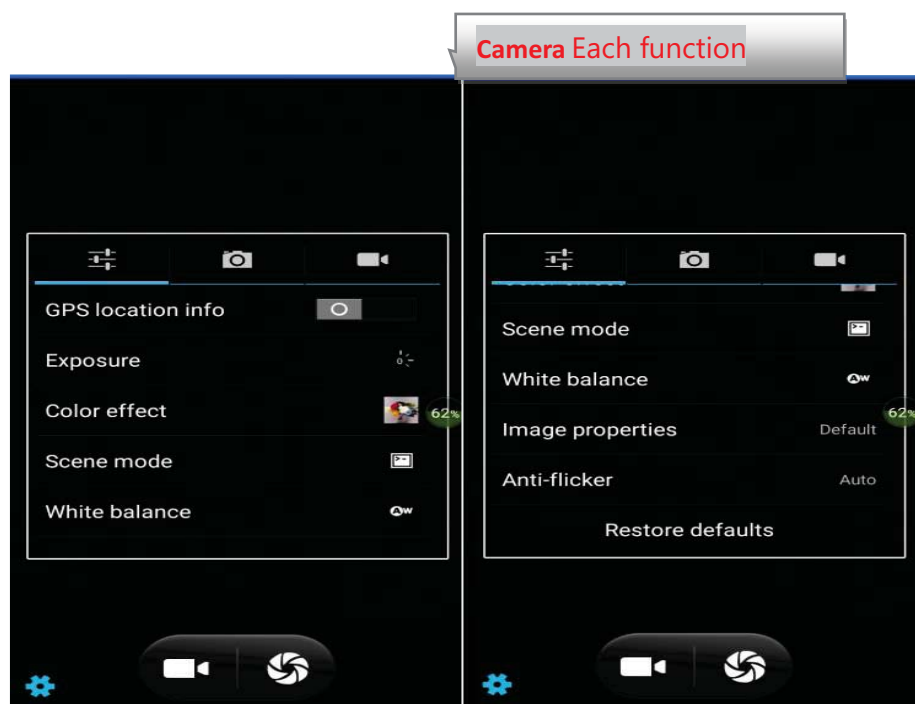
Press home, touch menu, select camera. Take pictures

- 1) Aim at your object with the screen.
- 2) Touch the “shutter” button on the screen.
- 3) After taking, photos will be saved to the camera’s gallery folder. The name will be the time the photo was taken.
- 4) You can view the photos by touching the preview box button.
- 5) Camera settings

You can touch the “setting Menu” button in the camera interface to access the settings

Under camera viewfinder mode, press Menu, you can switch to video or photo gallery.

In viewfinder mode, the top right corner will display the preview of the previous picture. Touch preview box to display the on full screen and enlarge it to view details.





- Shared Settings of Camera and **Video camera**

- 1) Flash mode: Auto, On, Off.
- 2) GPS location info: on off
- 3) exposure:-3 -2 -1 0 +1 +2 +3
- 4) Color effect: None、 Mono、 Sepia、 Negative、 Aqua、 Blackboard、 Whiteboard.
- 5) Scene mode, Auto, Night, Sunset, Party, Portrait, Landscape, Night portrait, Theatre, Beach, Snow, Steady Photo, Fireworks, Sport, Candle light.
- 6) White balance: Auto、 Incandescent、 Daylight、 Fluorescent、 Cloudy、 Twilight、 Shade、 Warm fluorescent.
- 7) Image properties: Low Medium High
- 7) Anti-flicker: Auto Off 50HZ 60HZ

- **Camera Settings**

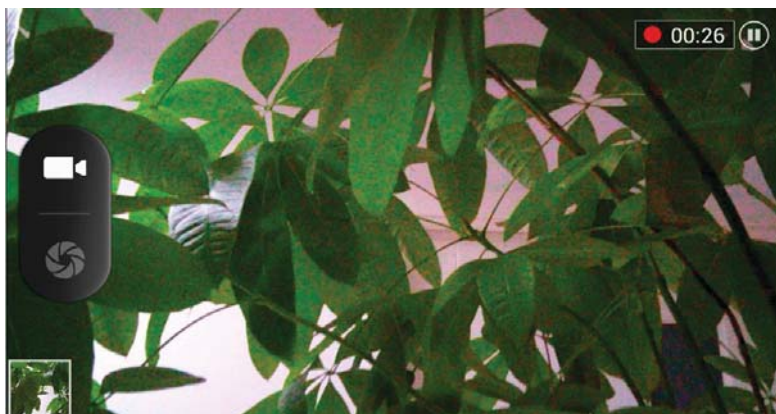
- 1) Capture mode: normal、Live Photo、Motion Track、 Face beauty、 Panorama 、HDR、 Multi angle view
- 2) Zero shutter delay: on off
- 3) Voice capture: ON---Capture and Cheese、 off
- 4) Face Detection: ON、 Off
- 5) self timer: off , 2seconds , 10seconds
- 6) Auto scene detection: ON、 Off
- 7) continuous shot: 40 shots , 90 shots
- 8) picture size: QVGA, VGA, 1M pixels, 1.3M pixels, 2M pixels, 3M pixels, 5M pixels, 8M pixels
- 9) Preview size: Full screen, Standard(4:3)
- 10) ISO:ON、 100、 200、 400、 800、 1600

## 13.2 Video camera

- **Prior preparation**

Install memory card before using the camera or video camera. All your photos or videos taken by the phone are stored in memory card.

- **Take video**



Press the home page, touch the menu, select the camera. Switch to video mode.

1) Aim at your subject with the screen.

2) On the screen touch the shutter button.

3) After shooting, the video will automatically be taken as file name, and by default save to the gallery to the camera photo folder.

4) The top right-hand corner will display a video preview. Touch the preview box to see the video in full screen.

Touch the play button to broadcast the video.

You can touch the “set” button in the interface of camera to access the settings

Under camera viewfinder mode, press Menu to switch to video or photo gallery.

- **Videos settings**

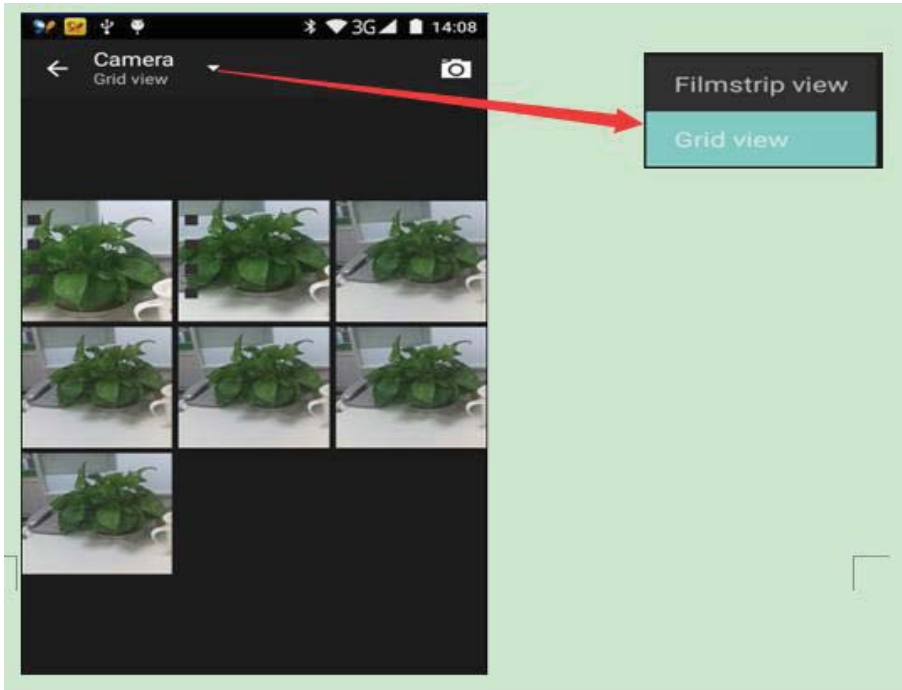
- 1) Noise reduction: ON OFF
- 2) EIS: ON OFF
- 3) Microphone: off, on
- 4) audio mode: meeting, normal
- 5) time lapse interval: off, 1s, 1.5s, 2s, 2.5s, 3s, 5s, 10s
- 6) video quality: low, medium, high, fine

## 14. Images

- Open images

Press home, touch label of applications, then touch photo gallery.

In the interface of camera, press menu to open it, then touch to operate.



### Gallery interface

A. in the gallery main interface, using the camera button on the upper right corner you can quickly switch to the camera application

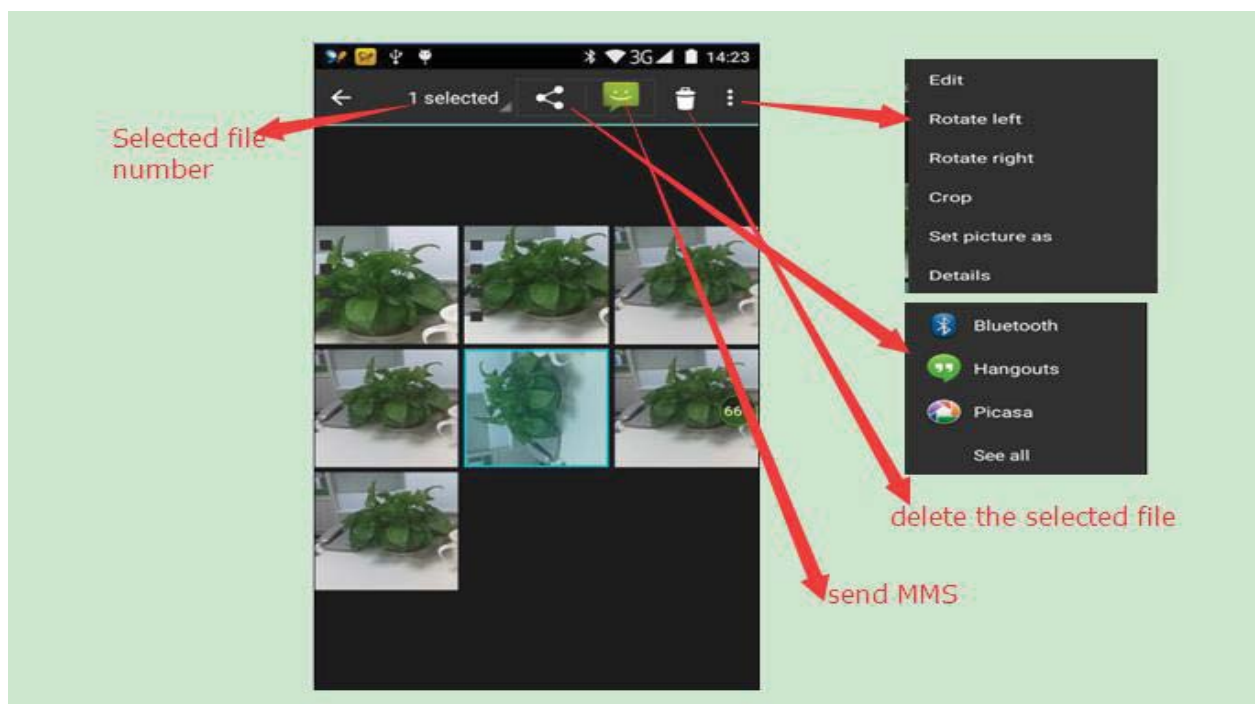
B. In the gallery main interface, the folder thumbnails will be displayed along with the folder name and the number of embedded files.

### Files Interface

a. In the library interface, the upper right corner will show the slide show play button. Click on the button to play all image files in a slide show.

b. Click on the images to see the image in full screen.

c. Long press the image file to access the pop-up menu with corresponding operations.



### Share photos

- In the picture viewer interface, select photos or folders you choose to share. Methods include Bluetooth, mail, and information sharing.
- A. use email to send pictures: choose Gmail or E-mail, pictures will be automatically attached to the email. Write your content and click send.
- B. using information sending pictures: select information, images will be automatically attached to the MMS. Write your content and click send.
- C. use the Bluetooth to send images: under the list of Bluetooth, choose paired Bluetooth device. Pictures will be transmitted via Bluetooth.

### See photo

- In photos viewer interface, sliding the screen forward or backward view the photos

### Edit pictures

- A. color effects: none, stamping, restore ancient ways, white and black, drift in addition to silver shadows, instantaneous, latte, blue, edition print, negative impact
- B. clip: straight, pruning, rotate, mirror
- C. editor brightness: automatically adjust color, exposure, halation, contrast, shadow, nature saturation, sharpness, curves, hue, saturation, black and white filter
- **check pictures**
- In photos viewer interface, sliding the screen forward or backward view the photos and edit the picture.
  - a. Edit light: Fill Light Highlights Shadows Auto-Fix.
  - b. Edit image effects : Cross-process Posterize Lomo Documentary and so on.



c. Color Effects: Warmth Saturation B&W Sepia Negative Tint Duo-tone Doodle.

d. Crop: Crop Red Eye Straighten Rotate Flip Sharpen.



### ● Clip pictures

- If you want to adjust the size of the clip, please hold the edge of the cutting tools. The arrow appears as a clip, move your fingers towards the inside or outside of the center to drag and adjust its size.
- If you want to adjust and keep the proportion, please hold down any of the four corners of one.

### ● shooting video

- In a picture of a photo gallery, touch video album, and then choose the video you want to watch and start playing video.
- The touch screen will display playback controls.
  - schedule control: You can drag the control bar and move to any play point.
  - screen zoom button: press ratio play, full-screen playback, and maximum play.
  - suspended or continue to play: When the video is playing, click pause to pause the video. When the video is on pause click play to continue to play the video.

### ● View images

- In the picture interface, touch photo album to view images.
  - Touch the thumbnail to view pictures in full screen.
- You can choose to display small or large thumbnails. Slide the screen towards the left side to view the next photo or towards right to view the previous one.

## 15. Music

The phone can play digital audio files stored in memory card. The following formats are available: AMR、M4A、MIDI、MP3、WAV、OGG.

- Open Music

Press home, touch the label of applications, touch music. The interface of Music Media will appear.

- Music Media

Your music files are classified according to the following four categories: Artists, albums, songs and play lists. Touch one of these categories to view the list inside.

The right side displays the current playback mode, looping, random play or lined up to play, etc.

The progress bar at the bottom can control the broadcast schedule and can be shown in the queue to realize fast forward fast rewind, and so on.

Continue the operations, until your wanted music appears. Such as, if you choose Artists a list of artists sorted in alphabetical order will appear. Choose one to open the list, then all the albums and songs will appear. Select one album to play all the songs in it.



- Tips: You can play all of the songs in random sequence. In the music media interface, press Menu, then touch Party Shuffle. The first randomly selected song will start to play. To close Party Shuffle, press Menu, then touch to turn off Party Shuffle.

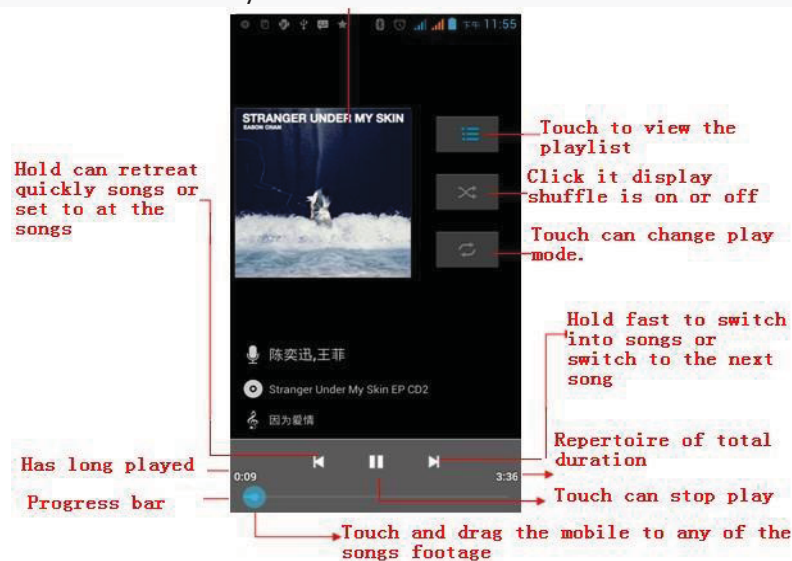
### a. Menu button > party shuffle

You can play all of the songs in random sequence. In the music media interface, press Menu, then touch Party Shuffle. The first randomly selected song will start to play. To close Party Shuffle, press Menu, then touch to turn off Party Shuffle.

### b. Menu button > add to the playlist

Add the song currently playing to the users playlist.

- c. Menu button > as a bell Set the current song to a cell phone ringtone
- d. Menu button > delete to delete the current playback songs and permanently remove from memory.
- e. the Menu button > sound Can open the equalizer, the user can adjust the music effects.
- f. the Menu button > music library Back to music main screen



### • build playlists

- 1) touch music library on any of the categories.
- 2) in the list, slide the screen up and browse the lists of the artist, album or song.
- 3) hold the artist, album or song, and touch the options menu to add to the playlist.
- 4) On the playlist window, touch the new playlist.
- 5) enter the name of the new playlist, and then touch save.

### •manage playlists

Enter the music library, then touch the playlist.

- 1) if you want to play songs in the playlist, please touch the name of the playlist.
- 2) if you want to delete the playlist, please hold the playlist, then touch delete.
- 3) if you want to rearrange the songs in the list of songs or remove, please hold the playlist, then touch the options menu editor.
- 4) to delete a playlist of songs, please hold down the songs, and then touch removed from the playlist.
- 5) if you want to rename playlists, please hold the playlist, then touch the options menu to rename. Enter the new playlist name, and then touch save.
- 6) if you want to set songs to a cell phone ringtone, touch menu cell phone ringtones. The song will be set to the default ringtone.

## 16. Calendar

### Calendar program, main interface

Enter the calendar program. White color is used on the surface of the month, the perimeter of the current day will be highlighted and will default to display the current week.

In the calendar interface, click the small arrow on the lower right hand corner under the year to display four kinds of display modes:

- 1) Day, shows the schedule for the day. Slide back and forth to turn to other days.
- 2) Week, shows the schedule for this week. Slide back and forth to turn pages and turn to other weeks.
- 3) Month, show the schedule for the month. Slide up and down to flip to other dates by month.
- 4) Agenda, shows schedule for a certain time range (slide up or down to view schedule at different points in time).

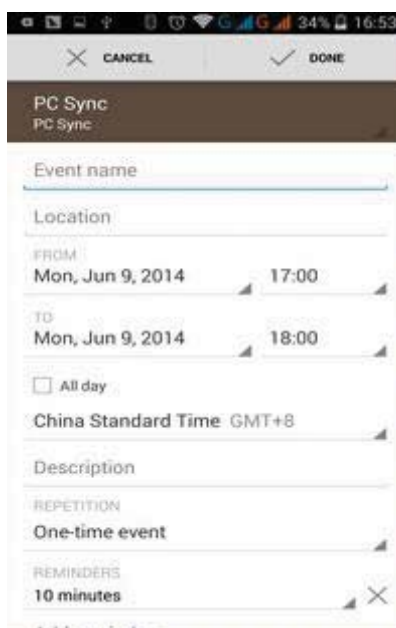
#### • new activities

- 1) click the MENU button > new activities.
- 2) in the event details box Enter the name.

Note: if special occasions, such as birthday or a whole day's activity, set the options as throughout the day. If the activity is in a certain period of time, select the start time and end time.

- 3) enter the activity location, illustration, invited object, repeat, reminder of time.
- 4) click complete to return to the calendar.

**Note:** all the titles of the events are displayed in the calendar. The calendar will not show the time period of the event.



## 17. FM Radio

### FM Radio

Through this program, you may listen to FM radio on the device. FM radio uses the wired headset as an antenna to receive signals. Before opening this program you can install the original equipment-headphones. When listening, you can switch it manually to speakers or to wired headphones mode.

- Open FM radio



Touch this label **FM Radio** to open the application of FM radio.

- 1) Click on "search" to automatically start scanning and searching for FM channels. The channel list interface will list all channels.
- 2) Click "FM recording", while listening to the radio you can record what is currently playing. The file name of the tape recording will default to an arbitrary input filename. The file will save to an FM recording default file.
- 3) Click "exit" to close FM radio. You will not be able to listen to in the background.
- 4) You must insert cable headphones as antenna, but you can click on the speaker button to play FM radio on speaker.
- 5) Click on the star icon to add the channel to the collection channel list.

- Listen to FM radio background

Click the return key, the radio program will move to the background and you can still continue to listen to the radio and carry out any other program.

## 18. Settings

Your service provider may default some device settings, so you may not be able to change these settings.

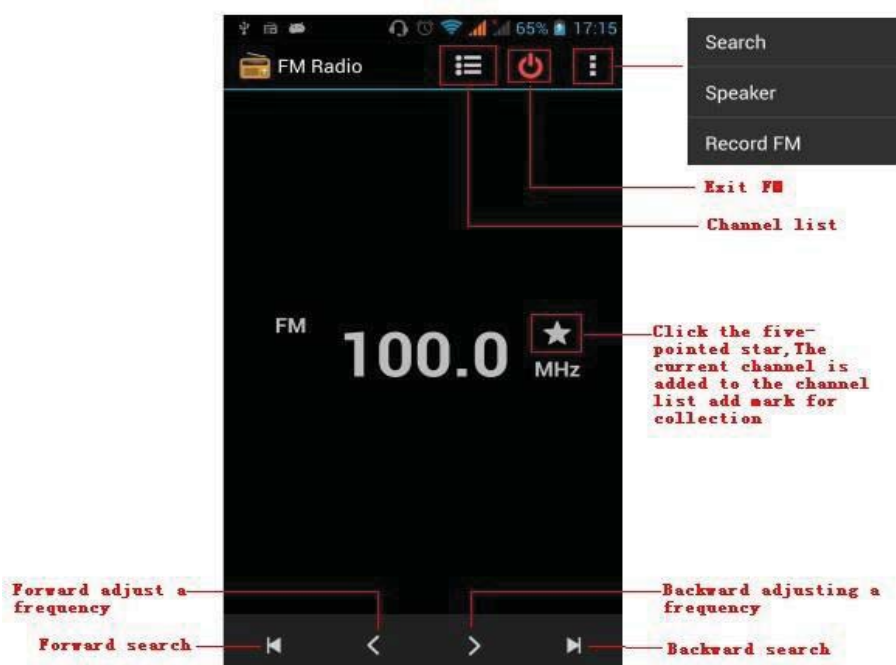
### Wireless & internet

#### •Wi-Fi



- 1) Flight mode Touch to open or close.

- 2) Wi-Fi and Wi-Fi settings Touch Wi-Fi **Off** to open **On**. Open Wi-Fi to search for available networks automatically, networks without password can be used directly, others



need to enter the password first.

Notice: If you open Wi-Fi then turn on flight mode, Wi-Fi will close automatically. If you open flight mode then connect to Wi-Fi, it can be used normally.

#### •Bluetooth



In settings switch the Bluetooth on to automatically search nearby Bluetooth open equipment.

#### •SIM cards



- Touch to select a SIM card or stop using a SIM card
- You can choose the default SIM card, you can choose a voice call, information, and choose which SIM CARDS to use data connection.

#### Data usage



1. On data usage you can set up mobile data traffic limit. If the usage is more than limit, mobile data will close to other services.

#### •More

Wireless & networks

- a. Airplane mode
- b. Default SMS app
- c. VPN
- d. Tethering&portable hotspot
- e. Cellular networks

#### Device

#### •Display



- |                           |  |
|---------------------------|--|
| a. Brightness level       | Adjust the screen brightness   |
| b. Adjust brightness      | Brightness will adjust according to the light source   |
| c. Wallpaper              | You can set the mobile phone wallpaper from the wallpaper gallery, gallery program or dynamic library. |
| d. Sleep                  | Adjust the delay before the screen automatically locks.  |
| e. Font size              | Set the font size of the system  |
| f. When device is rotated | Rotate the content inside  |

#### • Sound & Notification



This option sets the phone tones when receiving calls or notifications. Including: Vibration, volume, ring tones, ring tones notification and feedback (Button operation tone, select Sound, screen lock tone, touch) to adapt every environment.

- 1) Select “Standard / Mute / Conference / Outdoor, Touch the spot on the right, when turns green, it opens.
- 2) Volume: You can manually slide to select, including the ring volume and alarm clock settings.
- 3) call: voice call ringtone, video call ring
- 4) notice: default notification sound
- 5) sound improvement: in view of the headphones sound, trumpet volume booster
- 6) Notification and interference

#### •Storage



- a. Can view the SD card and cell phone memory usage.
- b. Can Unmount SD card or Erase SD card.
- c. Can choose the default memory.

## • Battery



View the current battery level and see the power used by each application.

## • Apps



- a. Manage applications and delete installed applications.
- b. In the running services, click on the 'stop' running services to remove a service from the list.

## Personal

### • Location



- 1) Use wireless to find locations in the application Google map.  
Touch it to open or close
- 2) When using the GPS satellite positioning, set accuracy to street level (cancel it to save battery).  
Touch it to open or close
- 3) GPS EPO assistance. Use GPS assistance data (EPO) to speed GPS positioning
- 4) A-GPS. Use auxiliary data to accelerate the process of GPS positioning.  
When you open it, it will remind you “it produces GPRS flows when using A—GPS” .

## • Security



- 1) Set up screen locks by using images、PIN or password to lock the screen.
  - a. Touch “images.” The first time you do this there will be a simple unlock instructions: Click “next step” to continue the step then “make the unlocking image” .
  - b. Touch PIN. Enter PIN numbers to unlock the screen.
  - c. Touch password. Set password to unlock the screen.
  - d. Touch “no”. Stop this application.

- 2) Set up SIM card lock. Enter 4-8 PIN numbers to set the SIM lock.

SIM card PIN (Personal Identification Number) is used to prevent unauthorized use of SIM cards. PIN code is provided with SIM. The service provider will provide the initial value.

To change a blocked PIN code, you need to open the "SIM Lock ", then go to Change Password screen. The phone will automatically prompt you to enter the old PIN code and ask to enter a new PIN code twice. Then the phone will let you know that the code was changed successfully. If you enter the PIN incorrectly three times, SIM card PIN codes will be automatically locked. PUK codes are usually supplied with SIM card. If not, you should go to the service provider for the codes.

If you enter PUK code wring 10 times, the SIM card will be permanently locked.

- |                                 |  |
|---------------------------------|--|
| 3) Password visible             | Password visible when entering it  |
| 4) Select device administration | Add or delete device manager.  |
| 5) Use security credentials     | Allow application to access security credentials or other credentials.     |
| 6) Install from SD card         | Install the encrypted certificate from SD card.                            |
| 7) Set password                 | Set or change Certificate store password                                   |
| 8) Clear storage                | Clear all the contents of the certificate store and reset their passwords. |

- a. Unknown sources Allow to install non-electronic market applications

- b. Manage applications      Manage and delete the installed applications.
- c. Running services      Touch any of the services listed, a message will pop up asking if you want 'to stop the service?' Touch the 'Stop' button. The service is stopped and will disappear from the "running services" list.
- d. Storage use      You can view the all programs downloaded, or on the SD card, or running and see how much memory space they occupy
- e. Battery use      You can see the power used when the phone is in Standby, Phone idle, Display and Browser.
- f. development      a. USB debug: USB debug only applies in the develop process. This function allows you to copy data to computer and mobile devices.

## • Accounts



Add account

- a. Corporate
- b. IMAP
- c. Google
- d. Personal(IMAP)
- e. Personal(PoP3)
- f. POP3

## • Languages & Input



- 1) Selecting Language District      Includes all the languages available on the phone. You can add a total of 12.
- 2) Custom Dictionary      Add words to custom dictionary or delete.
- 3) Keyboard Settings      Vibrates when buttons are pressed, plays sound when buttons are pressed, Capitalizes automatically, Speech Input (by microphone on the keyboard), Input words (speech can be altered by sliding finger on space key), Displaying tips (activate predictive function when you input words); Auto-Text (Automatically input certain words when press space key or specified keys)
- 4) Input method      You can select Android keyboard or Google input method.

## • Backup & reset



- 1) Backup data, application data, WLAN password and other Settings backup to Google's servers
- 2) Reset to Factory Settings, Clear all data stored on the phone.

## System

### • Date and Time



- 1) Automation      Use date and time provided by Network.
- 2) Setting Date      Touch "+" and "-" to set date.
- 3) Selecting Time Zone      Select Time Zone according to where you are. For China please select "GMT+08:00, China Standard Time".
- 4) Setting Time      Touch "+" and "-" to set time.
- 5) Use 24 Hour Time Format      ON/OFF
- 6) Select Date Format      There are 3 kinds of formats you can choose from: Month-Day-Year, Day-Month-Year and Year-Month-Day, among which Year-Month-Day is the default setting.



- **Schedule power on/off**



You can set time of boot or shutdown by touching it. You may also select to repeat it on a certain day during a week.

- **Accessibility**



- 1) Large text
- 2) Power button ends call: During a phone call, pressing the "power" will end the call and not shut down the screen
- 3) Auto-rotate screen
- 4) Speak passwords
- 5) Touch & hold delay
- 6) Install web scripts
- 7) Quick boot

- **Printing**



- a. Can search a printer for printing

- **Developer options**



- b. USB Debugging: USB debugging only for development and USB disk.
- c. Stay awake: Screen will never sleep while charging.
- d. Allow mock locations
- e. Desktop backup password
- f. Strict mode enabled
- g. Pointer location
- h. Show touches
- i. Show screen updates
- j. Show CPU usage
- k. Force GPU rendering
- l. Window animation scale:
- m. Transition animation scale
- n. Don't keep activities
- o. Background process limit
- p. Show all APRs

- **About phone**



You can check the information on status bar and remaining power.

## 19. Notices for the use of phone

Your phone is a product of superior design and craftsmanship and should be treated with care. The following suggestions can help you comply with the terms of repair kits, to extend the life of mobile phone.

- 1) Place the mobile phone and their parts and components out of reach of small children.
- 1) Keep the phone dry, rain, humidity and all types of liquids which contain minerals will corrode electronic circuits.
- 2) Don't touch the phone with wet hands when charging, it will cause electric shock or damage the phone.
- 3) Avoid place the device in high temperature environment. Temperatures will shorten the life of electronic devices, damage batteries, and warp or melt certain plastics.
- 4) Avoid place the device in too low temperature environment. When the temperature rises, the phone will produce water vapor that

may damage electronic circuit.

- 5) Avoid place the phone in dusty, dirty places, otherwise parts may be damaged.
- 6) To avoid the phone in a lit cigarette, near open flame or any heat source.
- 7) Do not open the device, non-professional approach will do damage to the phone.
- 8) Do not throw it from height, knock or shake the phone, rough handling can damage internal circuit boards.
- 9) Do not paint the phone, because the paint will block headphones, microphones or other removable parts, and lead it not work.
- 10) Use clean, soft, dry cloth to clean the camera, light sensor lenses. Prohibit the use of harmful chemicals and cleaning agents, cleaning fluids to clean the phone
- 11) If mobile phone, battery, charger, or mobile phone accessories are defective, send to the nearest qualified service center for inspection.
- 12) If necessary, Service Centre staff will assist you and will arrange for phone repairs.

## 20. FCC Caution

- Labelling requirements.

This device complies with part 15 of the FCC Rules. Operation is subject to the following two conditions: (1) This device may not cause harmful interference, and (2) this device must accept any interference received, including interference that may cause undesired operation.

- Information to user.

Any Changes or modifications not expressly approved by the party responsible for compliance could void the user's authority to operate the equipment.

- Information to the user.

Note: This equipment has been tested and found to comply with the limits for a Class B digital device, pursuant to part 15 of the FCC Rules. These limits are designed to provide reasonable protection against harmful interference in a residential installation. This equipment generates uses and can radiate radio frequency energy and, if not installed and used in accordance with the instructions, may cause harmful interference to radio communications. However, there is no guarantee that interference will not occur in a particular installation. If this equipment does cause harmful interference to radio or television reception, which can be determined by turning the equipment off and on, the user is encouraged to try to correct the interference by one or more of the following measures:

- Reorient or relocate the receiving antenna.
- Increase the separation between the equipment and receiver.
- Connect the equipment into an outlet on a circuit different from that to which the receiver is connected.
- Consult the dealer or an experienced radio/TV technician for help.

## **21 Specific Absorption Rate (SAR) information:**

This Automotive Diagnosis Computer meets the government's requirements for exposure to radio waves. The guidelines are based on standards that were developed by independent scientific organizations through periodic and thorough evaluation of scientific studies. The standards include a substantial safety margin designed to assure the safety of all persons regardless of age or health.

FCC RF Exposure Information and Statement the SAR limit of USA (FCC) is 1.6 W/kg averaged over one gram of tissue. Device types: SL6010 (FCC ID: WA6SL6010) has also been tested against this SAR limit. The highest SAR value reported under this standard during product certification for use at the ear is 0.14W/kg and when properly worn on the body is 0.85kg. This device was tested for typical body-worn operations with the back of the handset kept 1cm from the body. To maintain compliance with FCC RF exposure requirements, use accessories that maintain a 1.0cm separation distance between the user's body and the back of the handset. The use of belt clips, holsters and similar accessories should not contain metallic components in its assembly. The use of accessories that do not satisfy these requirements may not comply with FCC RF exposure requirements, and should be avoided.

## **22 Body-worn Operation**

This device was tested for typical body-worn operations. To comply with RF exposure requirements, a minimum separation distance of 1.0 cm must be maintained between the user's body and the handset, including the antenna. Third-party belt-clips, holsters, and similar accessories used by this device should not contain any metallic components. Body-worn accessories that do not meet these requirements may not comply with RF exposure requirements and should be avoided. Use only the supplied or an approved antenna.