



# LIFE 8 XL

## USER MANUAL

Table of Contents

[Safety Information](#)

[Call Functions](#)

[Notifications Bar](#)

[Contacts](#)

[Messaging](#)

[Bluetooth & Wi-Fi](#)

[Opera Browser](#)

[Gmail](#)

[Play Store](#)

[Camera](#)

[Gallery](#)

[Music](#)

[FM Radio](#)

[Sound Recorder](#)

[File Manager](#)

[Calendar](#)

[Alarm Clock](#)

[Settings](#)

[Storage](#)

[Troubleshooting](#)

## Safety Information

Please carefully read the terms below:

### **Use Safely**

Do not use the phone in situations where it might cause danger.

### **Transportation Safety**

Please observe all transportation laws and regulations.

Please drive with both hands on the wheel.

**PLEASE DRIVE RESPONSIBLY - DO NOT TEXT AND DRIVE**

### **Hospital Safety**

Please follow hospital rules and limitations.

Please turn off your mobile phone when near medical instruments.

### **Airport Safety**

Remember to follow all airport and flight safety regulations.

Please do not use your phone during flight.

## **Chemical Warning**

Do not use your mobile phone around fuels or chemicals.

## **Temperature Warning**

Do not subject your phone to extreme temperature conditions.

## **Water Hazard**

Your phone is not waterproof. Keep your phone away from water or liquid to avoid damage.

## **Emergency Calls**

Make sure your mobile phone is switched on and in a service area. In home screen, tap the phone key and dial the emergency number.

## **Accessories and Batteries**

Use only Blu authorized batteries and accessories.

## **Information Backup**

Remember to keep a written record of all important information.

## **Battery Safety and Precautions**

- For better performance and longer battery life, it is recommended that you charge the battery fully before using the mobile phone for the first time.
- The optimum performance of a new battery is typically achieved after two or three complete charge cycles. **Note:** Keep in mind that continuous overcharging will affect long term battery life.
- While charging, keep the mobile phone out the reach of children.
- Store the battery in a cool and dry place away from direct sunlight and water.

- Do not expose batteries to extreme temperatures.
- Immediately stop using the battery if it produces an odor, cracks and leaks, overheats, distorts or has any other type of physical damage.
- Avoid using the charger near or around liquids. If the charger comes in contact with water or any liquids, immediately unplug it from the outlet to reduce the risk of overheating, charger malfunction, electric shock or fire.

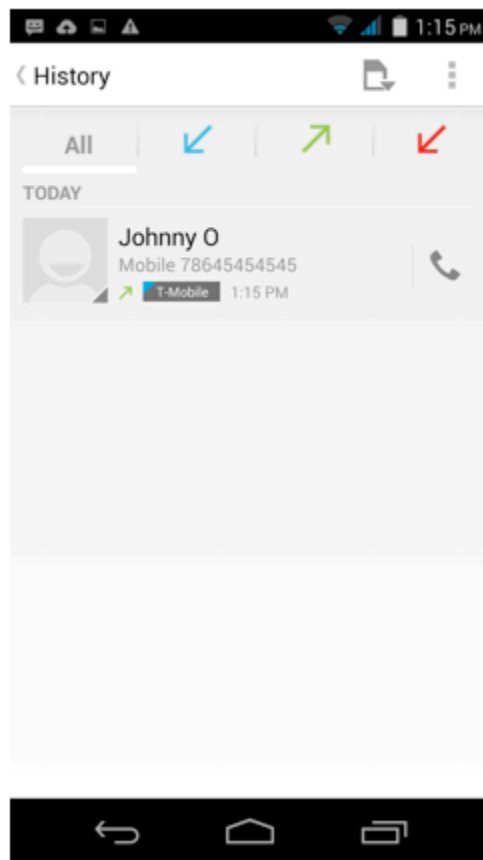
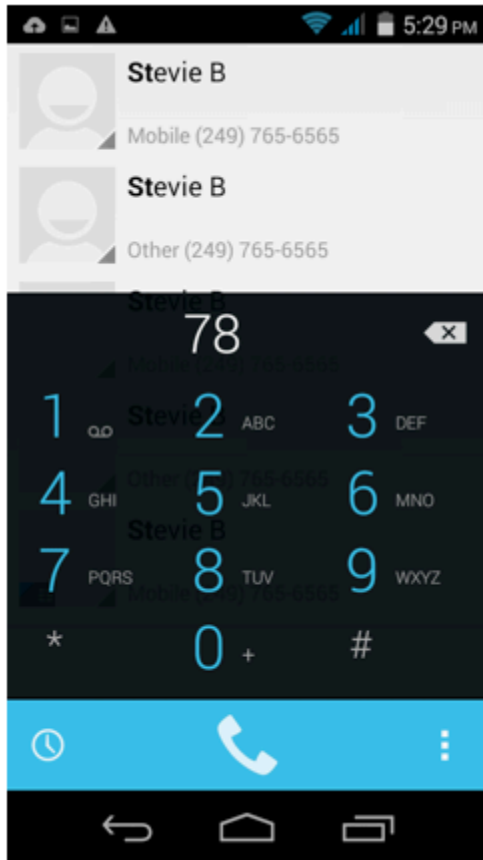
**Warning:** Please be careful with the disposal of used batteries. Do not throw away batteries with daily waste. Please follow local environmental laws and guidelines for proper waste disposal.

### **Cleaning and Maintenance**

- Avoid using the handset and accessories in excessively moist areas to avoid malfunction.
- Use a soft, dry cloth to clean the handset, battery and charger.
- Do not use alcohol, thinner, benzene or any other solvent to clean the handset.

## **Call Functions**

At the dial keyboard, enter the phone number and then click the dial key. If dialing an extension, you may click the dial pad icon in the bottom of the screen to open the interface and enter the number of the extension. You may also press and hold the 0 key to add a (+) sign when adding an international dialing prefix.



## Call Logs

Every telephone number called and received will be saved in the phones call log. All numbers in the call log can be dialed directly by clicking the dial icon on the screen. When the number appears on the list, click it to view details. To clear the call logs, press the menu key and select delete.

## Call Options

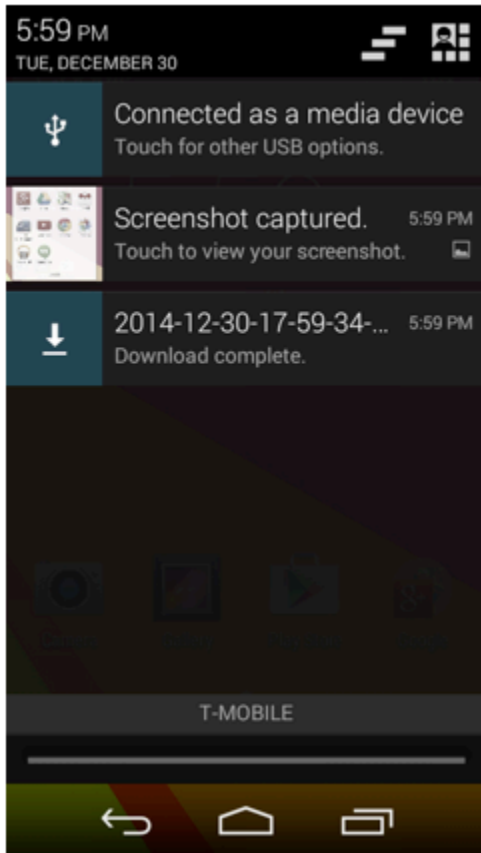
There are different options that can be used in the call log and dialing interface. You may press the menu key while in the dial interface and adjust call settings. In the call logs, you may press browse through contacts list or set default contact resources.

## Notifications Bar

The notification bar is located on the top of the screen which contains useful and important information regarding your phone and the applications that are installed.



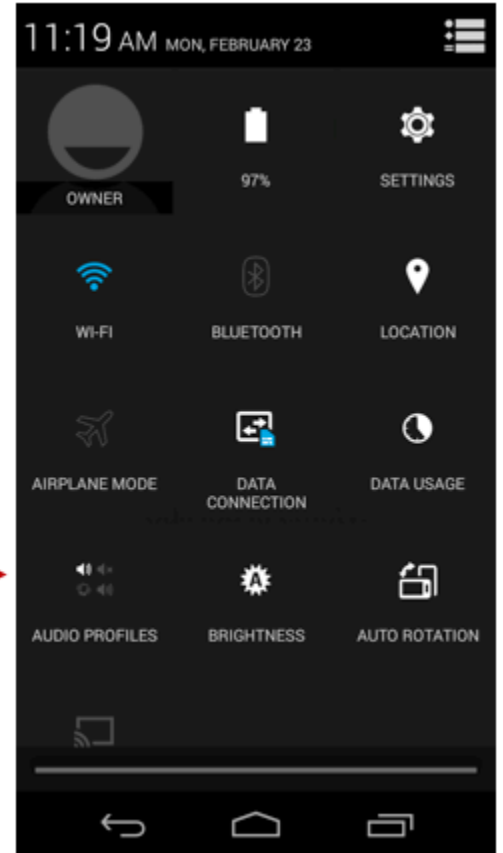
On the notification bar, several icons will appear such as signal bar, battery indicator, data indicator, Bluetooth and Wi-Fi. You may slide the notification bar down with your finger to display any pending notifications or actions.



**Clear  
Notification and  
Quick Settings  
menu buttons**

**Pending  
Notifications and  
Applications**

**Quick  
Notification  
Settings**



## Notification Settings

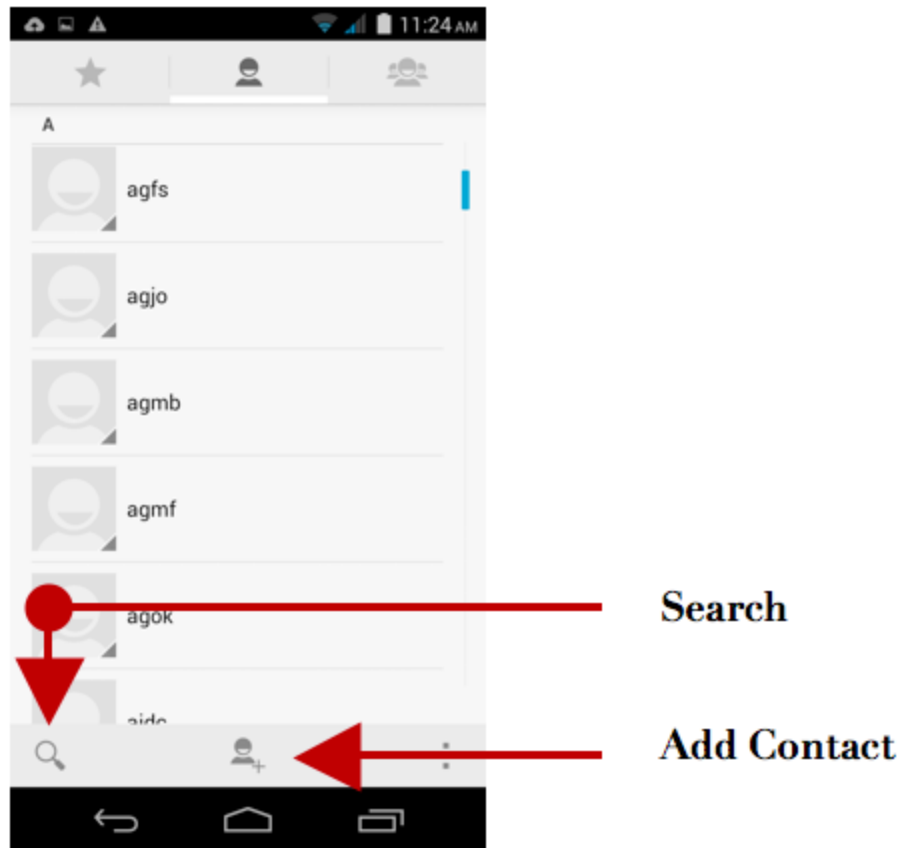
The notification settings window provides shortcuts to different phone settings for quick access. Click on any of the shortcut notification icons to power on or off.

**Note:** To clear notifications, drag down the notification bar and click the clear notification icon on the upper right hand part of the screen (3 horizontal lines). The notification settings menu is located by dragging down the notification bar and is located on the upper right hand part of the screen next to the clear notification icon.

## Contacts

**Enter:** Click on the applications menu and select contacts.

- The default display is the phone contacts and SIM card contacts.
- The contacts are organized alphabetically by default.

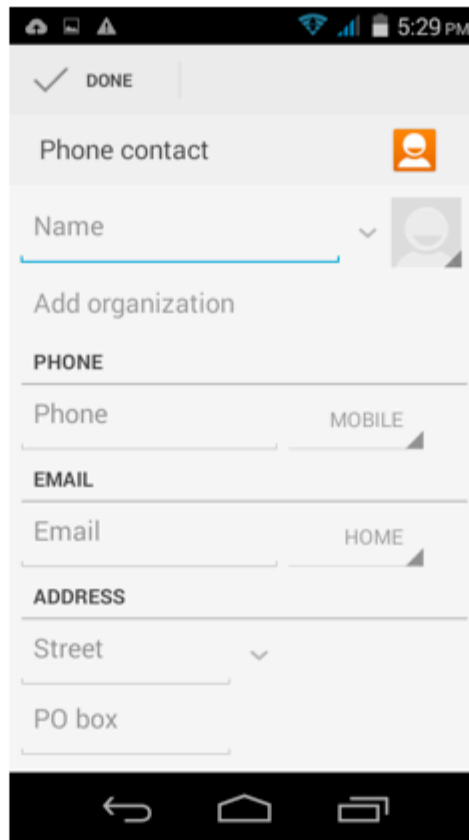
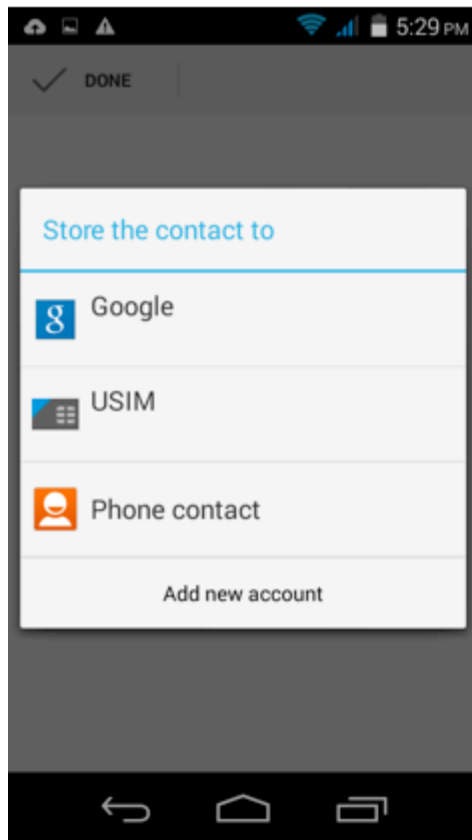


Click the Search icon to enter the contact search interface. Any numbers or letters associated with any of the contacts saved in the list will be shown in the search results.

### **Add New Contact**

- Click the add contact icon (+) to add contact.
- Select to save your contacts to your Google account, the phone or the SIM card.
- You may enter different contact details which include adding a picture, name, telephone number, group, address, and email among other options.
- Click to save contact.



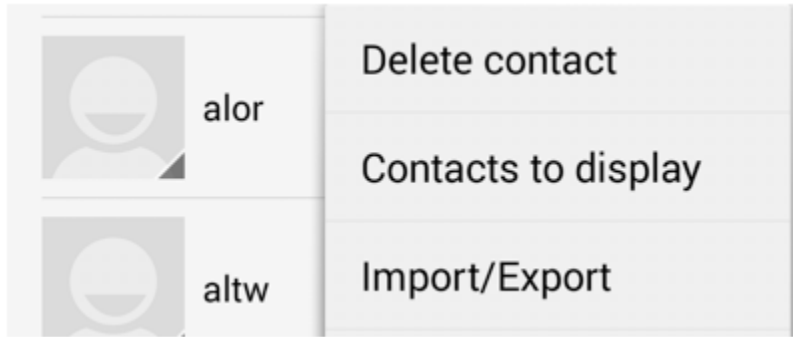


**Contact  
information  
entry field**

## Delete Contact

- Click on the Contacts icon to enter the phonebook.
- Click the menu key to access the Contacts menu.
- Click on Delete Contact and scroll to select which contact(s) you wish to delete.

**Note:** You may also search for an individual contact in the phonebook. Once the contact is found click the contact name to enter the contact profile, press the menu key to bring up the contact menu and select delete to eliminate from the phonebook.



## **Import / Export Contacts**

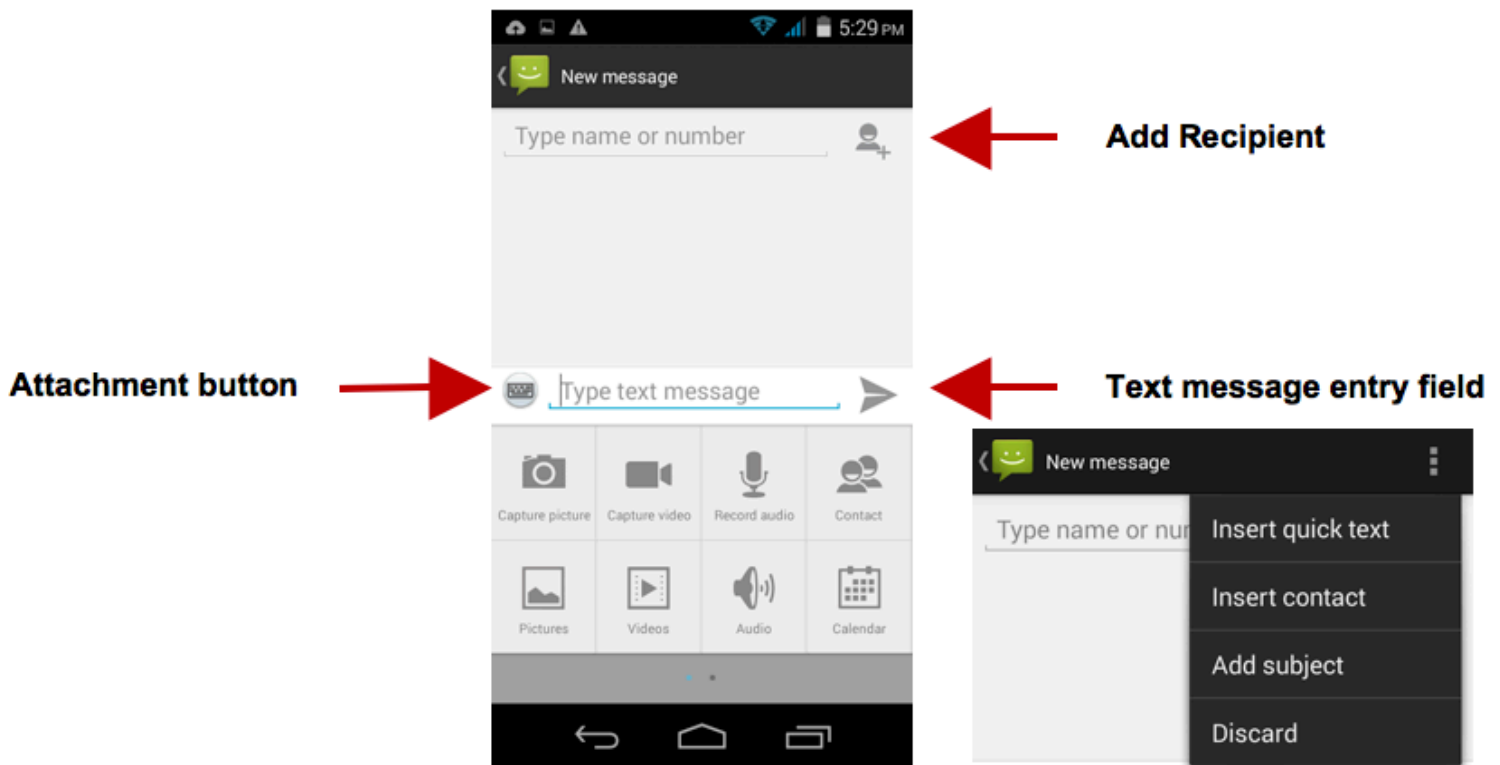
The phone allows you to import and export contacts to synchronize information between different storage types that include the SIM card, Gmail account and your phone.

### **To import or export contacts:**

1. Press the Contacts icon to enter the phonebook.
2. Press the menu key and select Import / Export
3. Select the source you want to copy the contacts from. Once selected click next and select the destination where you want the contact to be copied to then select the desired contacts to be copied.

## **Messaging**

You may use this function to exchange text messages and multimedia messages with your family and friends. The messages to and from the same contact or phone number will be saved into a single conversation so you may see the entire message history conveniently.



## Send an SMS

Application Menu » Messaging » New message (or shortcut icon)

- Click the contact icon to enter text message recipient
- Compose Text Message and click Send

## Send an MMS

When creating message, the default message style is SMS. The message will automatically convert to MMS when adding an attachment or when surpassing 10 pages of SMS messages.

- Click the attachment icon in the messaging interface.
- Click to add attachments and create an MMS message.

# Bluetooth & Wi-Fi

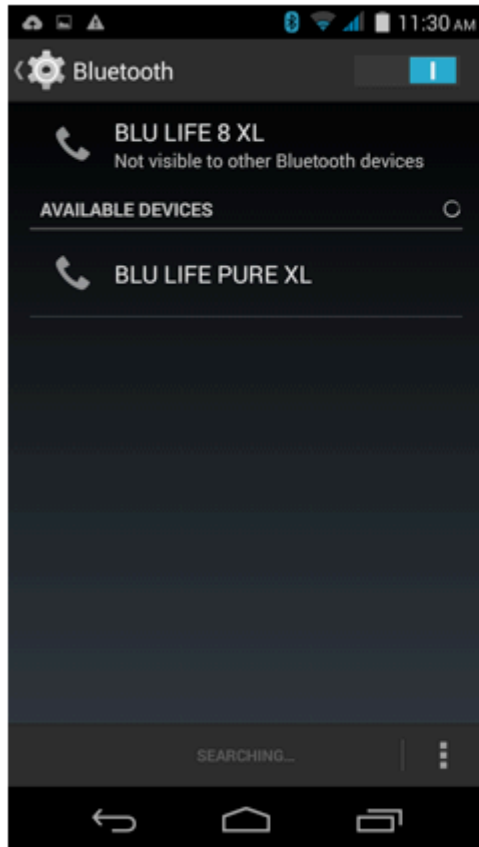
Bluetooth is a short-range wireless communications technology that devices can use to exchange information and connect to different types of devices which include headsets and other devices.



## Power on Bluetooth

Settings » Bluetooth and select to power on Bluetooth.

- The Bluetooth icon will appear in the notification bar. The Bluetooth will then start to scan for all devices within its range and will display all available devices in a list.
- In Bluetooth settings, all the devices found will displayed in a list. Once the device has been identified, click on it to connect.



**List of available  
Bluetooth devices**

**Note: The maximum  
detecting time of the phone  
is 2 minutes.**

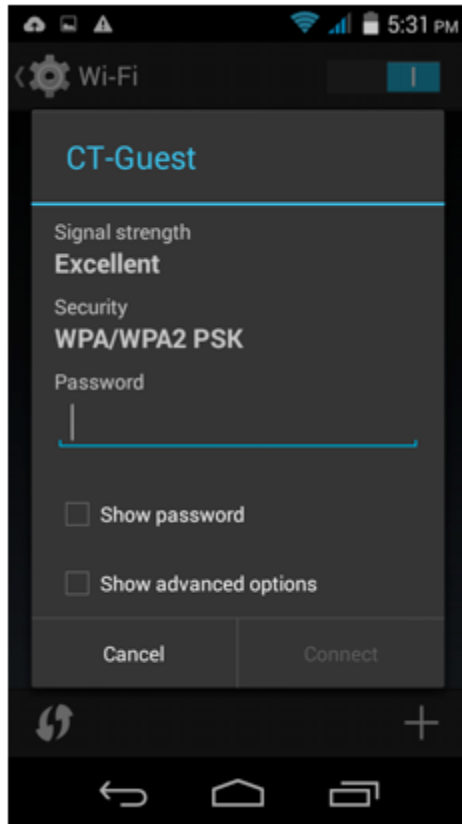
## **Power on Wi-Fi**

Settings » Wi-Fi and select ON to power on Wi-Fi

- Click on the desired Wi-Fi network to be connected.

**Note:** Unsecured networks can be connected to directly - secured networks require a password or credentials prior to connection.

To display advanced options, click on the available option tab.



**List of available  
networks and  
the network  
connection**

# Opera Browser

## Menu Functions Settings

### App Layout

- This option changes the layout of the browser

### New Tabs

- This option adds additional tabs

### Clear Browsing Data

- This option clears any data stored

## Off Road Images

- Check to select between different image qualities

## Browser Options

## History

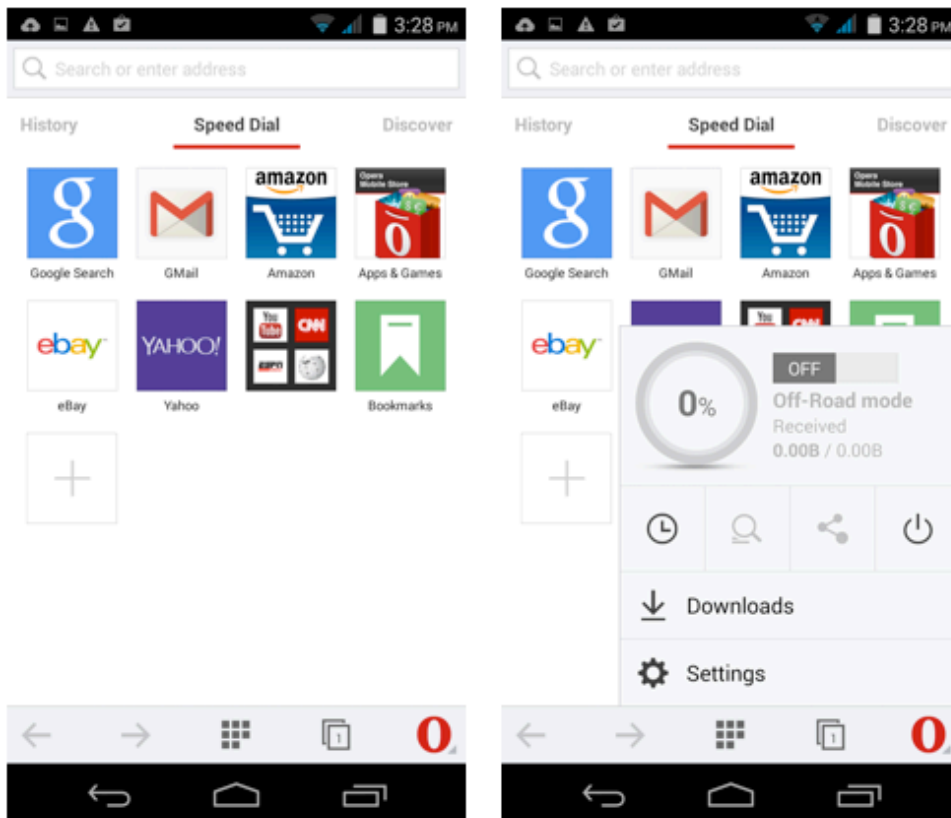
Displays recent web pages

## Speed Dial

Displays bookmarks and frequently accessed pages

## Discover

Displays top stories and recent news.

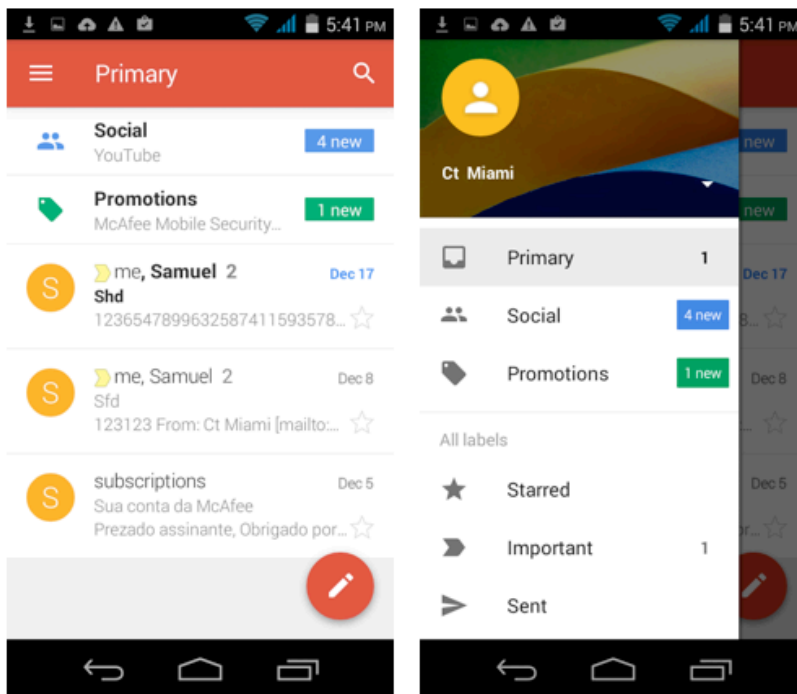


**Click menu to  
access the internet  
browser options**

# Gmail

Gmail is Google's free email service. To access the Gmail program, click the applications menu and click on the Gmail icon and either sign in with your existing account or follow the instructions to create a new account.

**Note:** In order to keep accounts streamlined with Google services, your Gmail account user name and password will be used for some Google programs which include: Google Play Store, Google Drive, Google Photos, Google +, and Google Wallet.



**The Gmail inbox is separated by default in three different categories.**

**These categories include primary inbox, social inbox where all your Facebook, Twitter, and social media emails are separated to and your Promotions inbox where all your commercial emails are separated.**

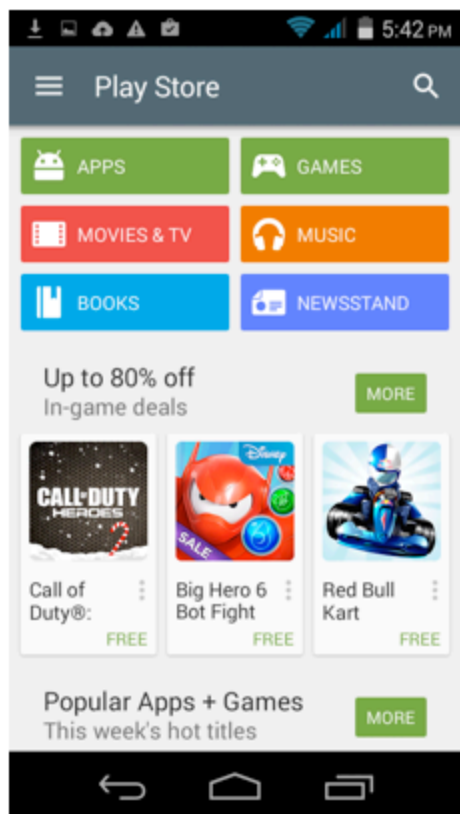
**You may add or delete other categories in Gmail settings**



# Play Store

Google Play allows you to download music, movies, and games directly to your device. To access the Google Play Store, click on the applications menu and then the Play Store icon.

**Note:** You need to log in to your Google account when configuring the phone for the first time.



**Search and select  
between different Play  
Store categories**

# Camera

**Prior to use:** Insert SD card before using the camera or video camera. All photos or videos taken by the phone are typically stored in the memory card for large storage capacity of images and videos.

## **Open Camera**

Click the Applications Menu » Camera

→ Switch to video mode if you want to record videos.

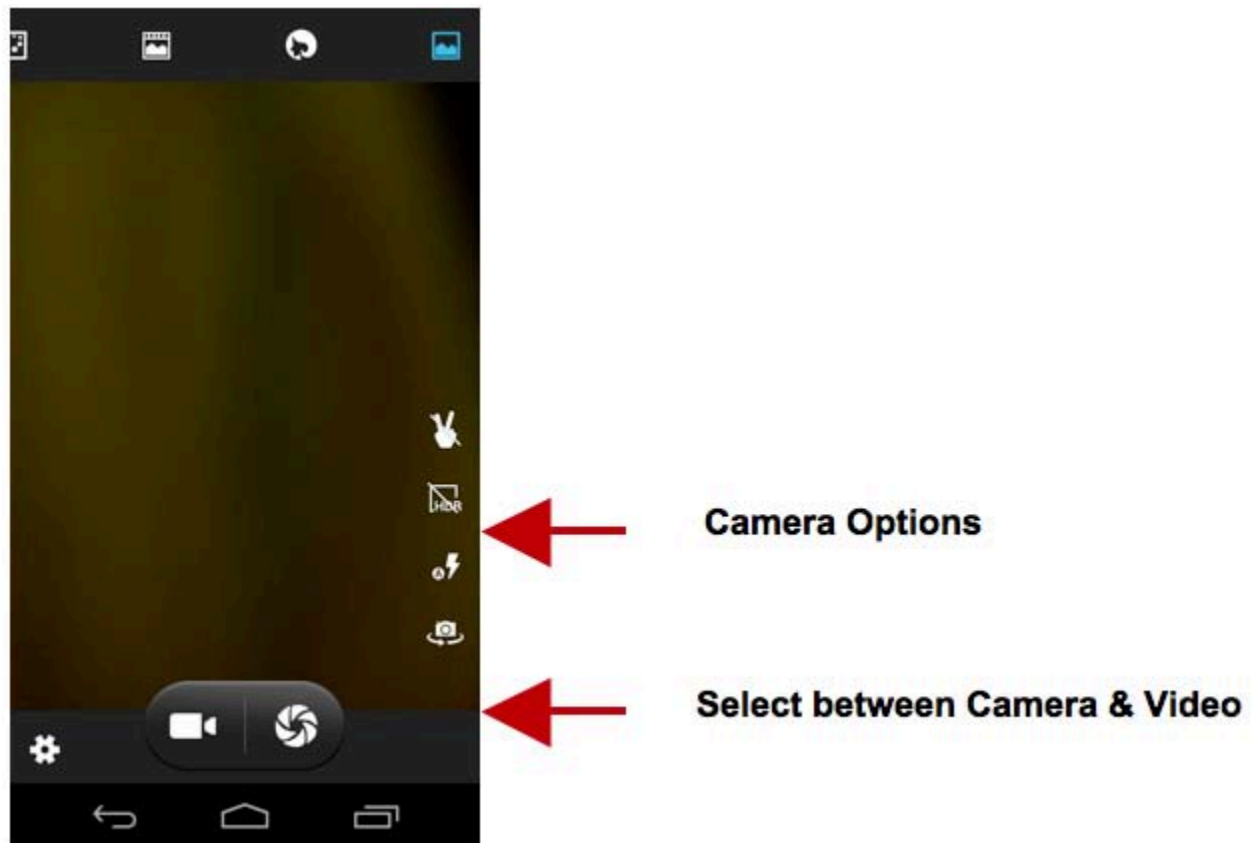
***Note:** You may place a camera shortcut icon on any of the screens*

## **Take Pictures**

Aim the object that the picture will be taken.

- Press the Shutter button on the screen to capture image.
- After taking the picture, the file will be saved in the cameras gallery folder.
- You can view the photos by clicking the preview box button.

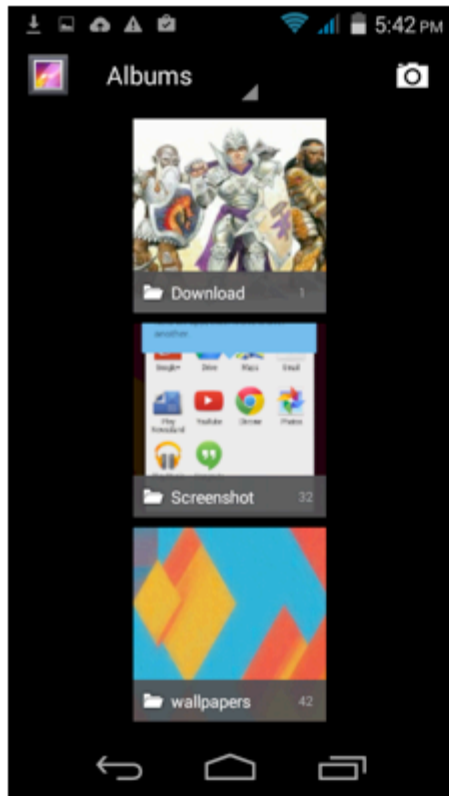
You may adjust various settings for the camera by pressing Menu while in the camera interface. When in the standard camera mode, you can switch to video to record or click the gallery preview box.



# Gallery

## Open Images

Click on the Applications Menu then click on the Gallery icon



**Pictures and videos  
are stored in  
separate albums**

## **Share Pictures**

You may share pictures by sending them through different types of installed applications. You may also send pictures through the MMS message function by attaching a picture and also via Bluetooth.

## **Adjust Image**

Press Menu and select edit to adjust images. You may select from different effects that may include: Vintage, Black and White, Instant, Latte, Litho, X-Process, Crop, Rotate, Mirror, Straighten, Vignette, Contrast, Exposure, Auto color, Shadows, and Vibrancy.

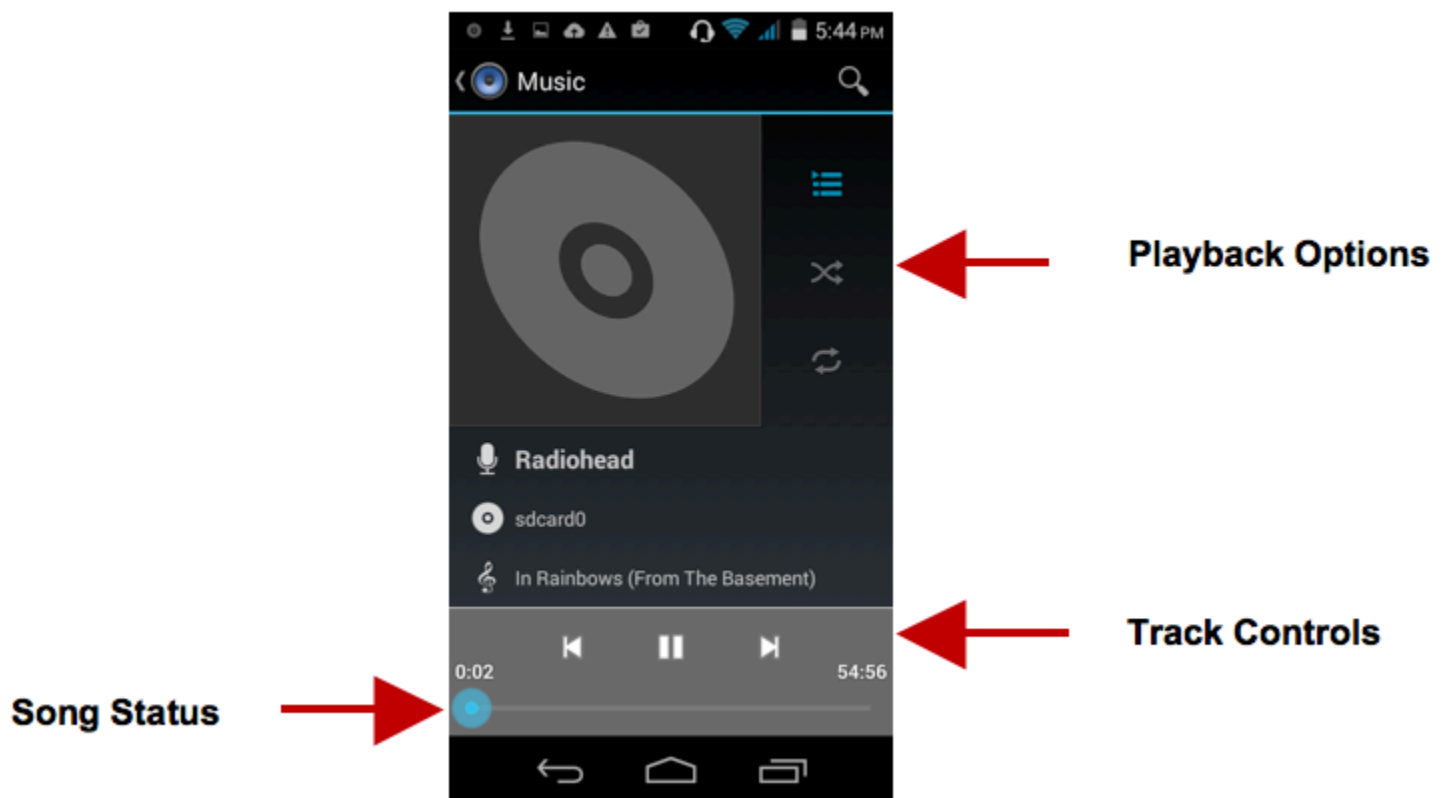
## **Crop Pictures**

Click menu and crop to adjust the size of the picture. Once the picture appears, pinch your fingers in or out to adjust the size. To keep proportion, hold down any of the four corners of the image and adjust.

# Music

## Open Music

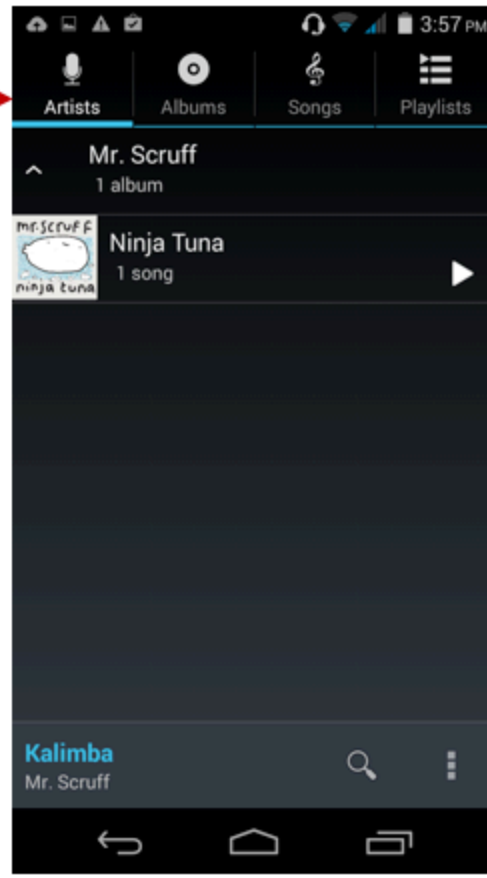
Click on the Music icon to open the Music Player



## Search Music

You may choose to search for music from media folder through artist name, song name, album name. The following formats are available: AMR, MIDI, MP3, WAV, and OGG.

**You may search music from the following options: Artist, Album, or Song**



**You may also save, play, and organize music through playlists**

## **Set Music Player in the Background**

Click on the Home key to move the Music Player to the background. You will see an icon on the status bar indicating that the music player is active.

**Music player icon**



## **FM Radio**

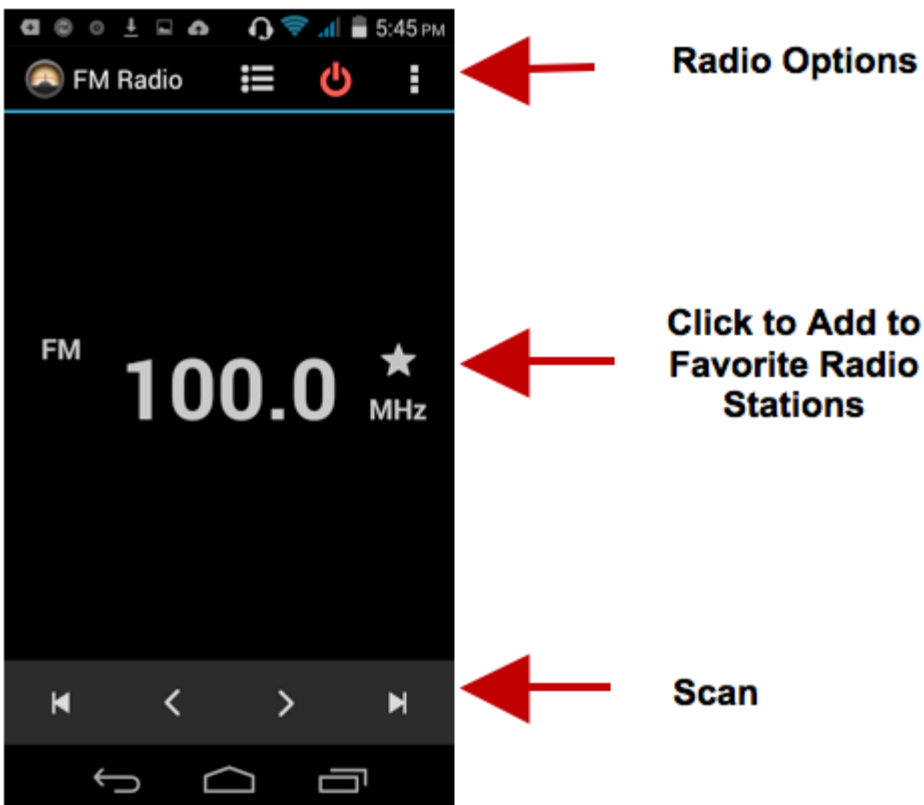
## FM Radio

Through this function, you may listen to FM radio on the device. The FM radio uses the wired headphones as an antenna in order to receive signal. Before using this function, connect the original equipment headphones that came with the phone.

### Open FM radio

Press the FM Radio icon to open the application.

Click to scan FM channels automatically then click to add any of your favorite radio stations.



### FM Radio as Background

Click on the Home key to move the FM Radio to the background.

### **Favorite Channels**

Click on the Star to add to Favorite Channels. You may also click on the Channel List to browse through added stations.

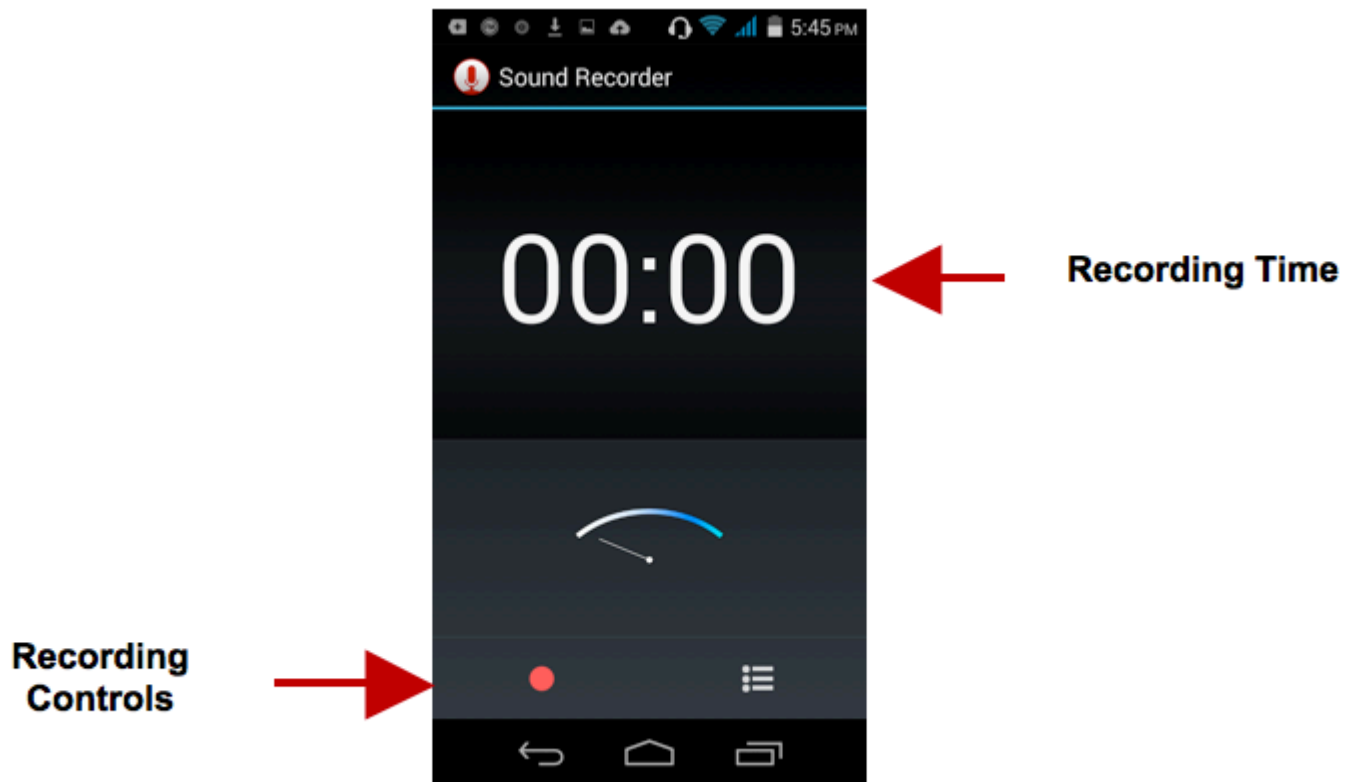
## **Sound Recorder**

You may send any recorded audio via Bluetooth or MMS and also have the option to make any recorded audio the phones default ring tone.

### **Record**

- Keep the phone's microphone near the sound source.
- Click the record button to record the audio.
- Click the stop button to stop recording the audio.



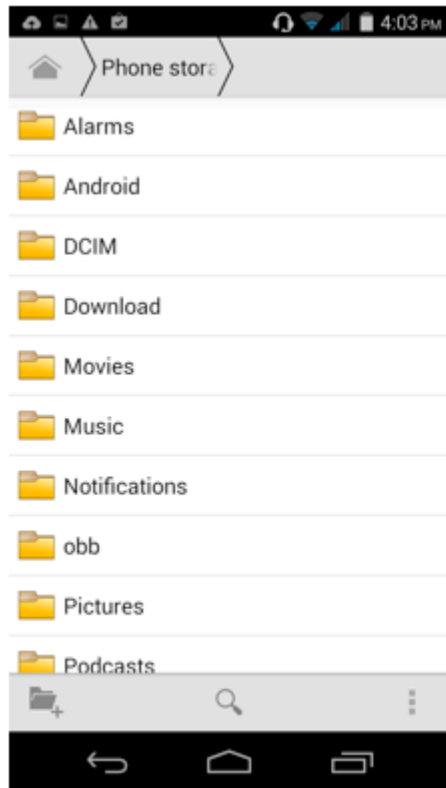


**Note:** All recordings are typically saved in the SD card folder.

Please ensure the SD card is installed prior to recording.

## File Manager

The file manager allows you to search and organize your stored phone files conveniently and efficiently through one program.

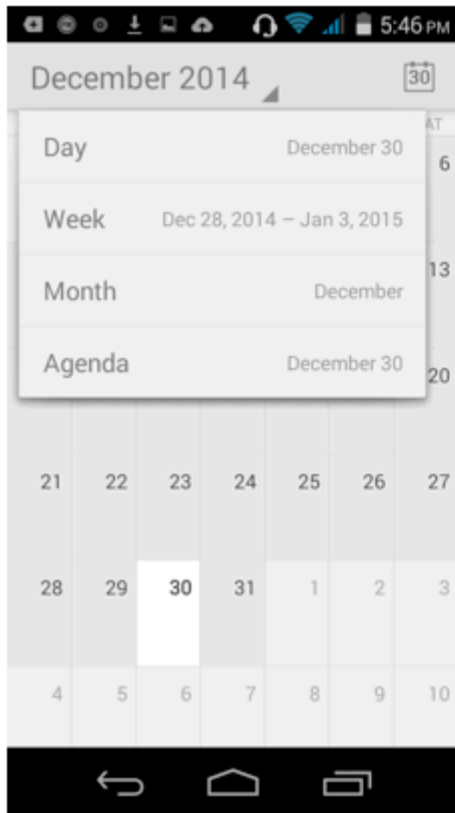


**Scroll and search through  
the File Manager for  
stored phone files.**

**You may also search or  
add new folders from the  
File Manager interface**

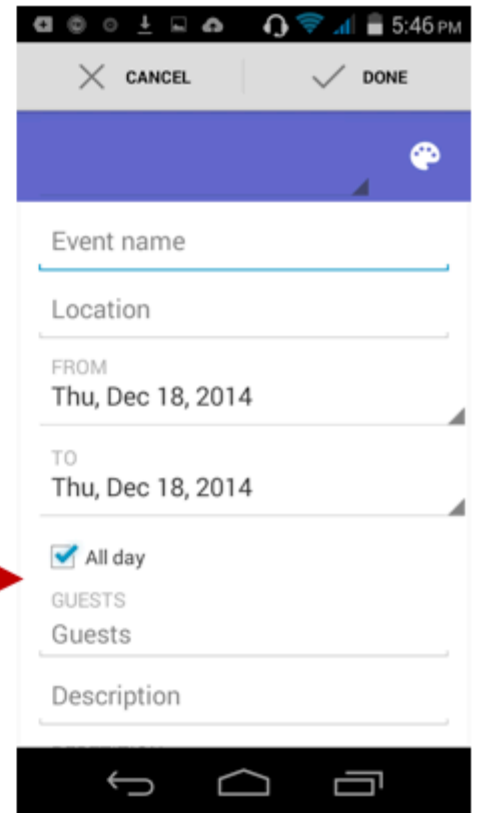
## Calendar

The calendar helps keep track of your life's most important moments in one application.



**Long press the  
specific day or hour  
you wish to enter a  
new event to**

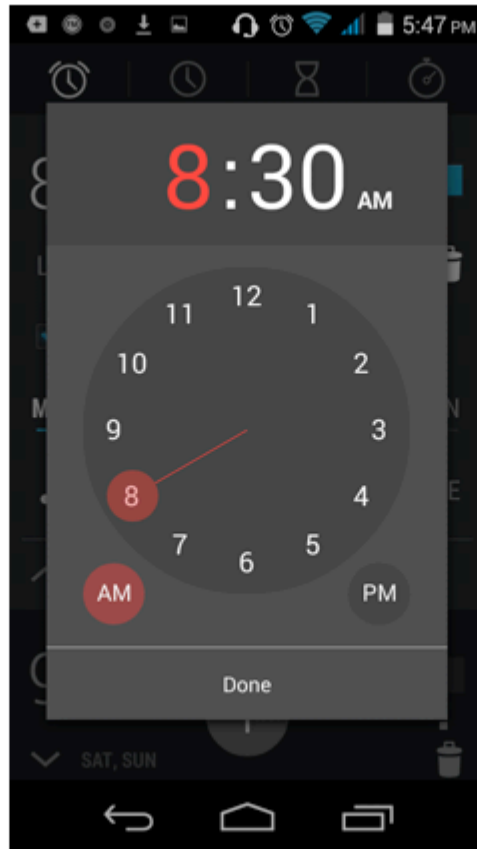
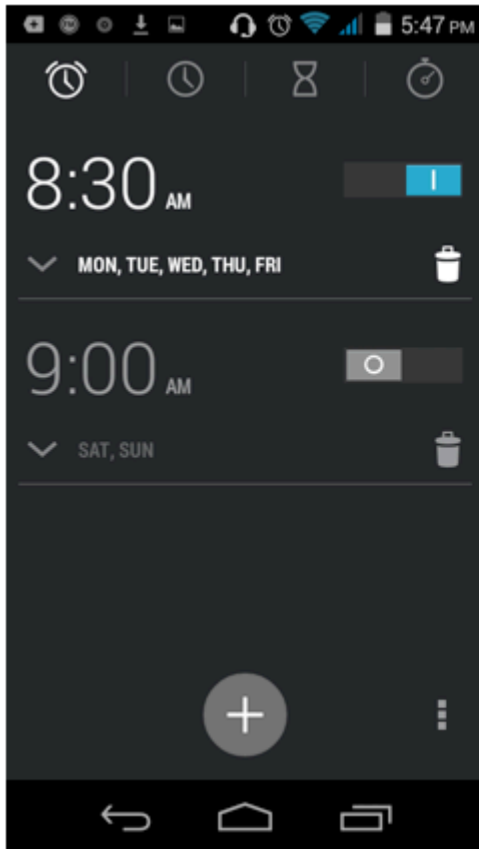
**Add Calendar details  
which include name,  
location, date, and  
other options**



## Alarm Clock

Click on the Clock icon then click the alarm tab to enter the alarm clock interface.

This option allows you to add and edit alarms.



**Click to add, edit or delete alarms**

**Then click on the specific hour and minute to set the alarm.**

## Settings

### Wireless & Networks

---



## Wi-Fi

- **Settings » Wi-Fi** to power on. When on, the Wi-Fi will automatically search for available networks. Any unsecured network can be used directly and any secured network requires a password or credentials prior to connection



## Bluetooth

- Power on Bluetooth. Once on, Bluetooth will automatically scan for any nearby open devices
- Click to connect device



## Data Usage

- Mobile and Wi-Fi Data Usage



## More Wireless & Networks

- Tethering, Portable Hotspot, VPN, Mobile Networks (APN settings)
- Airplane Mode

***Note:** When in flight mode, all network connections will turn off automatically*

## Device

---



## Audio Profiles

This option sets the phone ring tone settings for receiving calls and notifications. Some of the settings include:

- Vibrate, volume, ring tones, ring tones notification, dial touchpad, and haptic feedback and tones



## Display

- Brightness, Auto rotating screen, Wallpaper, Screen Timeout



## **Storage**

- View the phone memory usage



## **Battery**

- General power usage



## **Apps**

- Manage applications - Manage and delete installed applications
- Running Applications- Press the Stop button to stop any running applications and removes the application from the running apps list.

## **Personal**



## **Location**

- High Accuracy – Use GPS, Wi-Fi and Mobile Networks
- Battery Saving – Use Wi-Fi and Mobile Networks
- Device Only – Use GPS only to determine location



## **Security**

Set up basic screen locks: Use slide, pattern, PIN or password to lock the screen.

- Pattern: The first time there will be simple unlock instructions and examples.  
Click to continue the security pattern step
- PIN: Enter PIN number to unlock the screen
- Password: Use password to unlock the screen

*You may stop the security feature at any time.*

### **Set up SIM card PIN lock**

- SIM card PIN (Personal Identification Number) is used to prevent unauthorized use of SIM card.



To change a blocked PIN code, you will need to unlock the SIM lock then go to the Change Password screen. The phone will automatically prompt you enter the old PIN code and ask to enter a new PIN code twice. The phone will then prompt you that the change was successful. If you enter the PIN incorrectly three times, the SIM and PIN codes will be automatically locked. You will need the PUK code to unlock the phone which is available through your service provider. If you enter the PUK code incorrectly 10 times, the SIM card will be permanently locked. Please see your service provider for a new SIM card

- Password visible – Make the password visible when it's typed



## **Language and Input**

- Language – Change the language of the phone
- Keyboard Settings – Haptic vibration, Haptic tones, Capitalizing, Speech Input, Inputting words, Predictive text function, Auto-Text, Input keyboard method



## **Backup & Reset**

- Backup Data – Will back up all application data, WLAN passwords, and other settings to Google's servers
- Restore to Factory Settings - Clear all data stored

## System

---



### Date & Time

- Date and Time adjustment.
- Select Date Format - There are 3 kinds of formats you can choose from: Month-Day-Year, Day-Month-Year and Year-Month-Day, and Year-Month-Day which is the default setting



### Schedule Power On & Off

- Schedule power on and off



## Accessibility

- Power button ends call and auto rotate screen
- Speak Passwords and large text



## Printing

- You may print files via Cloud Ready printers.

(Please check Google Cloud Print website for printer compatibility information)



## Developer Options

If the phone does not display Developer options press “build number” seven (7) times in the about phone tab in settings.

- The developer option gives access to USB Debugging and other developer options



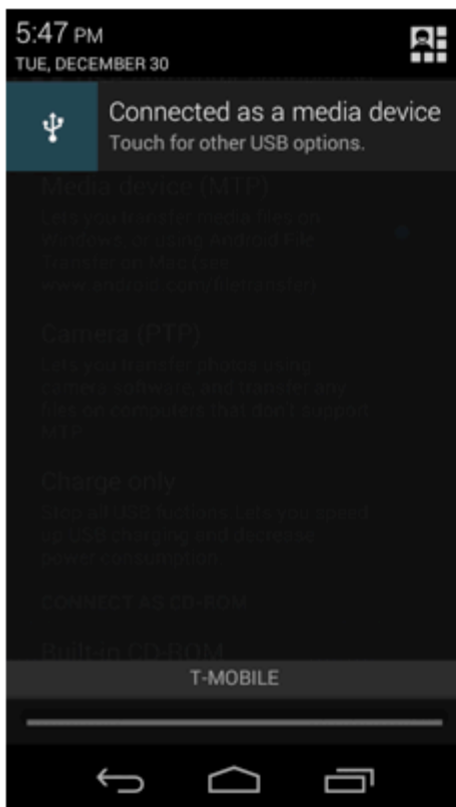
## About Device

- Phone information status and firmware updates

## Storage

Connect the phone with the USB cable provided. Once connected, a connection interface will appear.

In the connection mode interface, select one of the available options to transfer files to your computer.



**You may select to transfer files through MTP. For pictures or images, select PTP**

# Troubleshooting

Below is a list of common problems that may occur when using your mobile phone. Try these easy troubleshooting steps to resolve any type of issues you may encounter.

## **The phone does not power on**

- Press and hold the power key until the startup sequence appears on the display.
- Check the battery level and ensure there is sufficient charge.

## **The phone does not respond after several minutes**

- Remove and insert the battery – If the phone has an internal battery, please press and hold the power button.

## **The phone powers off by itself**

- Check if the screen lock of the phone is enabled.
- Check if the phone needs to be charged.

## **The battery won't charge**

- Check if the battery is already fully charged.
- Make sure that the battery is inserted correctly.
- Ensure that the battery being used is a BLU approved battery.
- Double check if the charger connector is properly connected to the phone.

**Note:** Connect charger only after the battery has been inserted.

## **The standby time is too short**

- Please keep in mind that standby time relates directly to phone usage (Internet, Text, Voice Calls, Maps, etc.).
- Batteries typically have to be replaced after a year of use.

## **The phone cannot connect to the network (Voice or Data)**

- Verify if you have active service with your service provider.
- Contact your local network service provider and verify if you are within its network coverage area.

### **The phone displays a SIM Error**

- Make sure the SIM is properly inserted and in its intended slot.
- Make sure that the SIM card is not damaged or scratched.

### **The PIN code was entered incorrectly three times**

- The SIM card will lock and you will need to enter the PUK code (PIN Unlock Code). Please contact your local service provider to obtain the PUK.

### **I cannot make calls**

- Make sure that the number you dialed is correct and the dial key has been pressed.
- Use the full national area code when dialing out of your area or when abroad, use country-specific international access codes.

### **I cannot receive calls**

- Make sure that your phone is connected to a network.

### **The caller ID does not display on incoming calls**

- Contact your local network service provider and verify you have the caller ID feature enabled on your account or verify if the caller may have blocked his number from appearing.

### **The caller cannot leave a voicemail message**

- Contact your local network service provider and verify if the voicemail service is active on your account or check if the network is busy.

### **The phone does not connect to the internet**

- Ensure with your service provider that your account has the appropriate internet/data plan enabled.
- Ensure internet APN settings are configured (Carrier dependent).

## **Text Messages cannot be Sent / Received**

- Ensure text messaging is enabled with your service provider.
- Ensure APN settings are configured (Carrier dependent).

The information provided in this user manual is subject to change without notice and BLU Products reserves the right to modify the manual at any given time. BLU Products has made every effort to ensure that this user manual is accurate and disclaims responsibility and liability for any inaccuracies or omissions. Some software, user interface, and elements may vary depending on final version.

## **Regulatory Information**

### **FCC Rules Compliance**

#### **(United States Federal Communications Commission)**

This mobile phone complies with part 15 of the FCC Rules. Operation is subject to the following two conditions: (1) This device may not cause harmful interference, and (2) this device must accept any interference received, including interference that may cause undesired operation.

This mobile phone has been tested and found to comply with the limits for a Class B digital device, pursuant to Part 15 of the FCC Rules. These limits are designed to provide reasonable protection against harmful interference in a residential installation. This equipment generates uses and can radiate radio frequency energy and, if not installed and used in accordance with the instructions, may cause harmful interference to radio communications. However, there is no guarantee that interference will not occur in a particular installation if this equipment does cause harmful interference to radio or television reception, which can be determined by turning the equipment off and on, the user, is encouraged to try to correct the interference by one or more of the following measures:

- Reorient or relocate the receiving antenna.
- Increase the separation between the equipment and receiver.
- Connect the equipment into an outlet on a circuit different from that to which the receiver is connected.
- Consult the dealer or an experienced radio/TV technician for help.

Changes or modifications not expressly approved by the party responsible for compliance could void the user's authority to operate the equipment. The antenna(s) used for this transmitter must not be co-located or operating in conjunction with any other antenna or transmitter.

## **RF Exposure Information (SAR)**

This mobile phone meets the government's requirements for exposure to radio waves.

This phone is designed and manufactured not to exceed the emission limits for exposure to radio frequency (RF) energy set by the Federal Communications Commission of the U.S. Government.

The exposure standard for wireless mobile phones employs a unit of measurement known as the Specific Absorption Rate, or SAR. The SAR limit set by the FCC is 1.6W/kg - Tests for SAR are conducted using standard operating positions accepted by the FCC with the phone transmitting at its highest certified power level in all tested frequency bands. Although the SAR is determined at the highest certified power level, the actual SAR level of the phone while operating can be well below the maximum value. This is because the phone is designed to operate at multiple power levels so as to use only the power required to reach the network. In general, the closer you are to a wireless base station antenna, the lower the power output.

The highest SAR value for the model phone as reported to the FCC when tested for use at the ear is **0.78**W/kg and when worn on the body, as described in this user guide, is **1.45** W/kg (*Body-worn measurements differ among phone models, depending upon available accessories and FCC requirements.*) While there may be differences between the SAR levels of various phones and at various positions, they all meet the government requirement.

The FCC has granted an Equipment Authorization for this model phone with all reported SAR levels evaluated as in compliance with the FCC RF exposure guidelines.

SAR information on this model phone is on file with the FCC and can be found under the Display Grant section [www.fcc.gov/oet/ea/fccid](http://www.fcc.gov/oet/ea/fccid) after searching - **FCC ID: YHLBLULIFE8XL**

For body worn operation, this phone has been tested and meets the FCC RF exposure guidelines for use with an accessory that contains no metal and the positions the handset a minimum of 1.5cm from the body. Use of other accessories may not ensure compliance with FCC RF exposure guidelines. If you do not use a body-worn accessory and are not holding the phone at the ear, position the handset a minimum of **1.5** cm from your body when the phone is switched on.

## **IC Notice**

This device complies with Industry Canada license-exempt RSS standard(s).

Operation is subject to the following two conditions:

(1) this device may not cause interference, and



(2) this device must accept any interference, including interference that may cause undesired operation of the device.

**IC: 11492A-LIFE8XL**

### **IC Radiation Exposure Statement**

This EUT is compliance with SAR for general population/uncontrolled exposure limits in IC RSS-102 and had been tested in accordance with the measurement methods and procedures specified in IEEE 1528 and IEC 62209. This equipment should be installed and operated with minimum distance **1.0** cm between the radiator and your body. This device and its antenna(s) must not be co-located or operating in conjunction with any other antenna or transmitter.

### **Additional Information**

The information provided in this user manual is subject to change without notice and BLU Products reserves the right to modify the manual at any given time. BLU Products has made every effort to ensure that this user manual is accurate and disclaims responsibility and liability for any inaccuracies or omissions. BLU Products makes no commitment to keep current the user manuals, however, does reserve the right to make improvements to the user manual at any given time without notice.