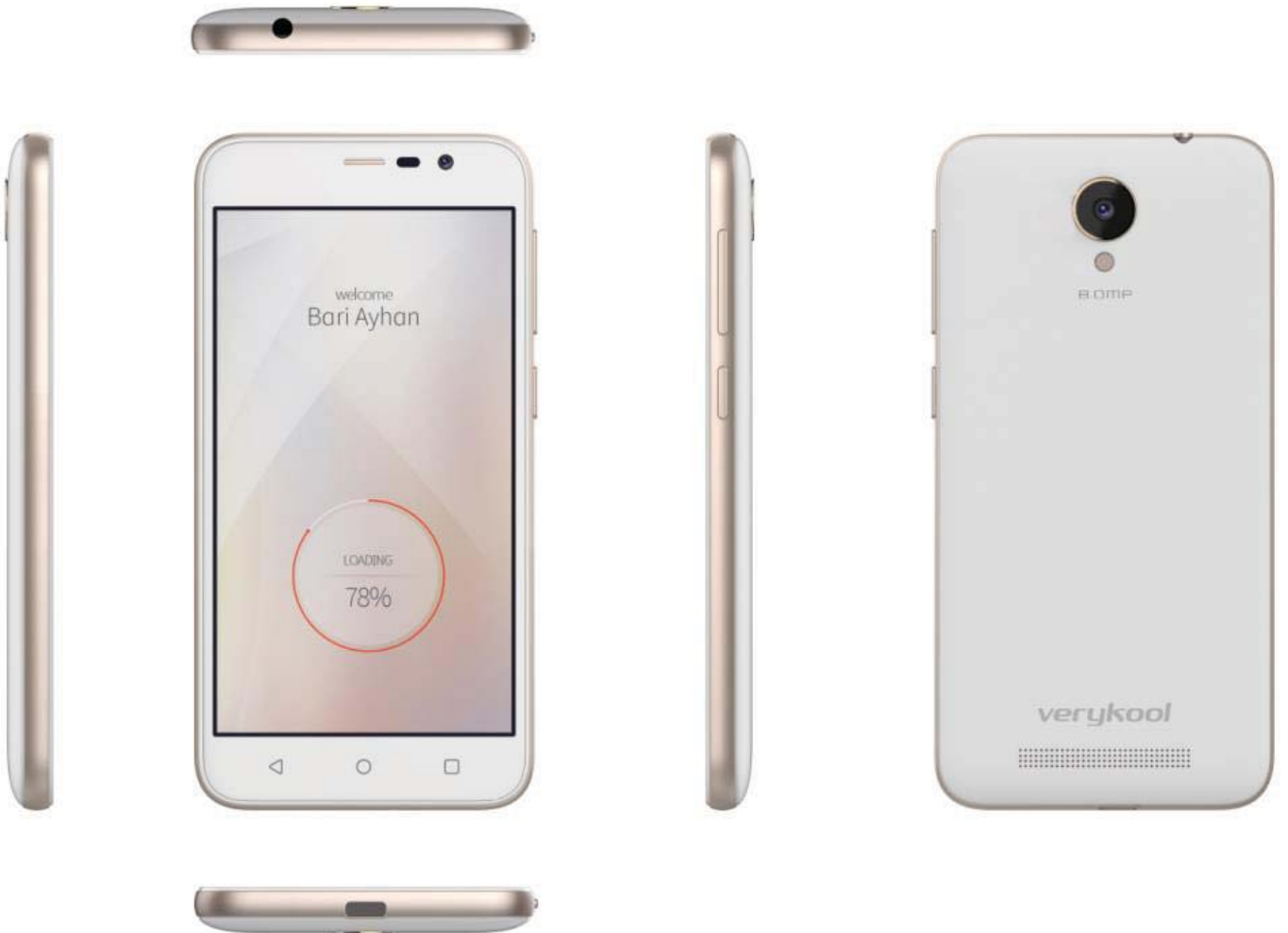


User Manual

----Verykool SL4502



Contents

1. APPEARANCE AND KEYPAD OPERATIONS.....	3
2. USING MEMORY CARD AS U DISK.....	4/5
3. WIFI	6/7
4. BLUETOOTH	8
5. MAIL	9
■ 5.1 GMAIL	9
■ 5.2 EMAIL	10
6. DIALLING.....	11/12/13
7. MESSAGING	14/15/16
8. CONTACTS	17/19/21
9. INTENET EXPLOR	22/23
10. RECORDER	24
11. CLOCK	24
12. CACULATOR	25
13. CAMERA	26/27/28
■ 13.1 IMAGE MODE.....	26
■ 13.2 VIDEO MODE.....	27
14. IMAGES	29/30
15. MUSIC	31/32
16. CALENDER	33
17. FM RADIO	34
18. SETTINGS	35/36/37/38

19. NOTICES FOR THE USE OF PHONE..... 39/40

1 . Appearance and Keypad Operations



Functions Description	
1. Back key	7. USB jack
2. Home key	8. Power key
3. Menu key	9. Volume key
4. Front camera	10. Back Camera
5. Receiver	11. Flashlight
6. Headset jack	12. Speaker
13. Mic	

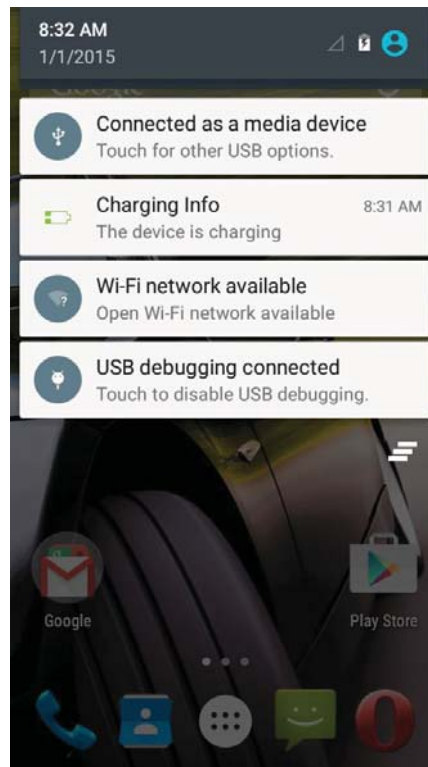
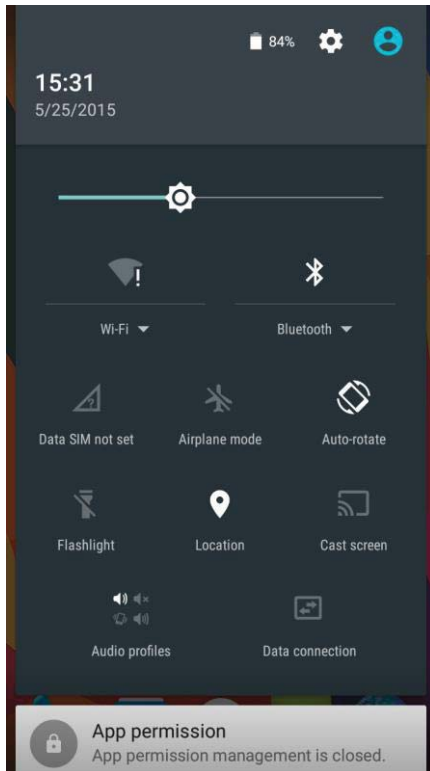
Keys	Functions
Home	<ul style="list-style-type: none"> ● Press to return home from any application or interface. ● Press to open recently opened application window.
Menu	<ul style="list-style-type: none"> ● Press to start the menu, which allows you to perform actions in the current interface or options menu.
Back	<ul style="list-style-type: none"> ● Press to return to the previous interface, or to close dialog box, options' menu, notification panel or keypad.
Power	<ul style="list-style-type: none"> ● Press to open the phone menu, then choose to lock the screen, turn off the phone, or set it to silent mode .
Up	<ul style="list-style-type: none"> ● Press it to increase the volume. ● Press it to turn the phone to vibration mode from silent mode.
Down	<ul style="list-style-type: none"> ● Press it to decrease the volume.
Sensor	<ul style="list-style-type: none"> ● Cover it to turn of the phone' s backlight.
Front camera	<ul style="list-style-type: none"> ● Enter the camera interface, can switch from back camera to front camera

2. Using Memory Card as U Disk

If you want to send music, pictures or other files to the phone's memory card from the computer, you should set memory card as u disk first.

Set memory card as u disk

- 1) Connect the phone to the computer with USB cable. The notification icon will appear in the status box.
- 2) Use USB mobile transmission line will connect to the computer
- 3) In the notification panel, touch USB to connect and then touch Connected as a media device

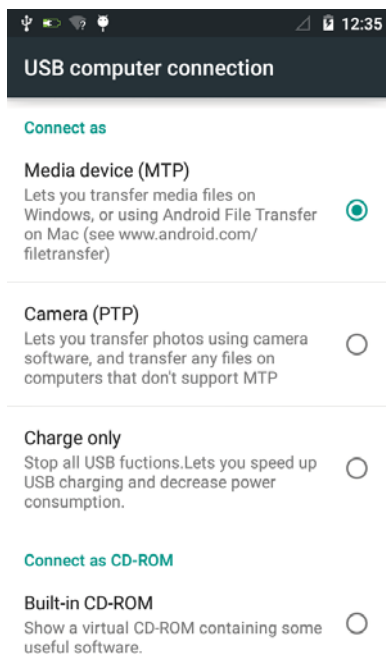


1

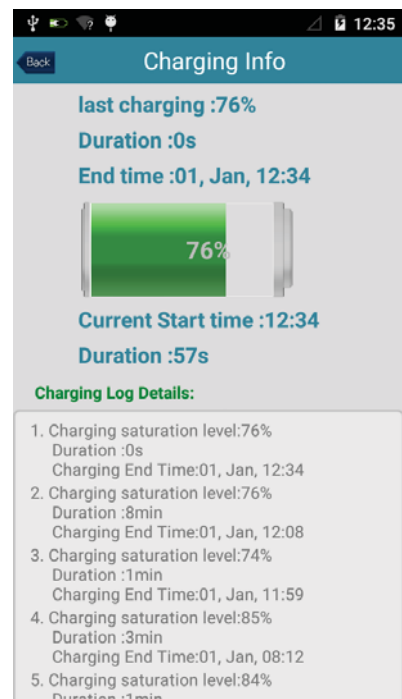
2

3

4



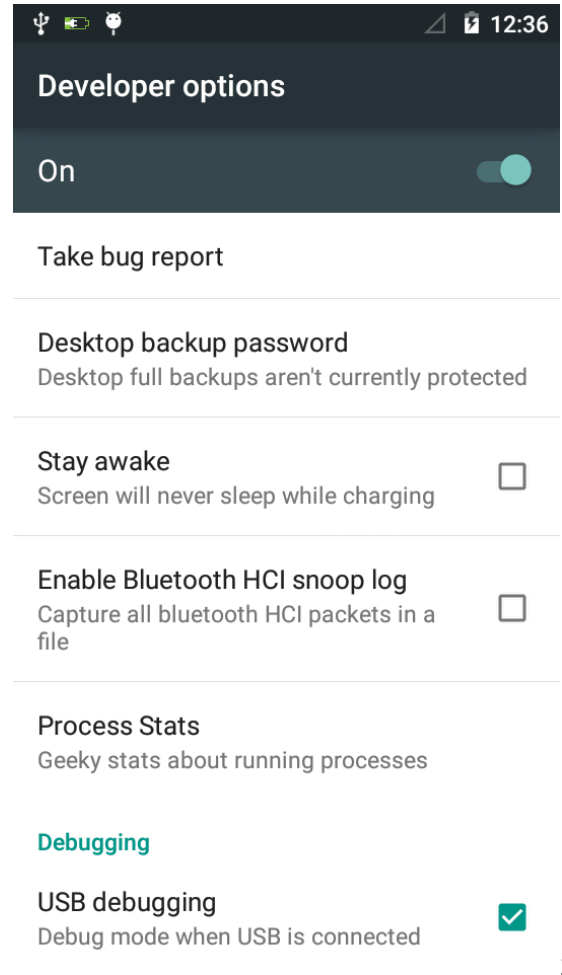
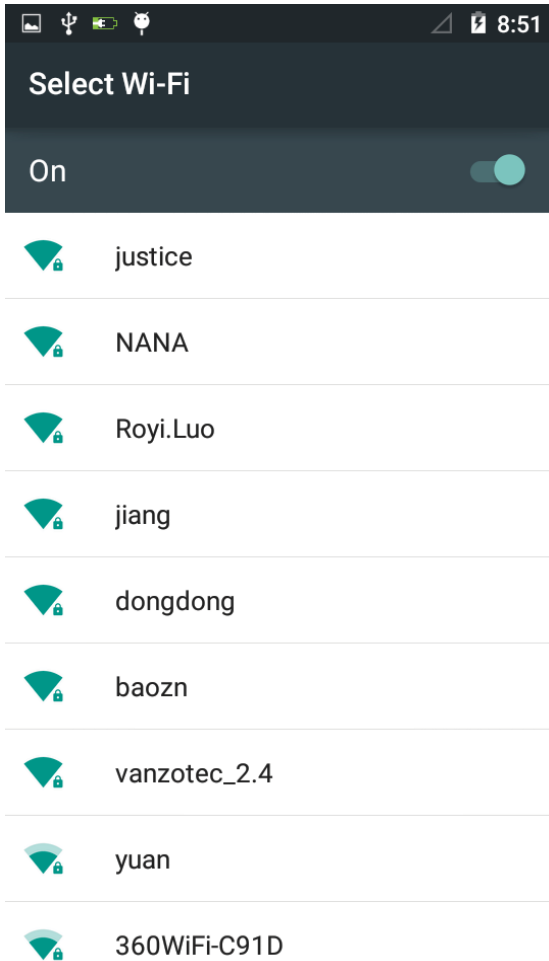
1: Media device connection



2:Charging info

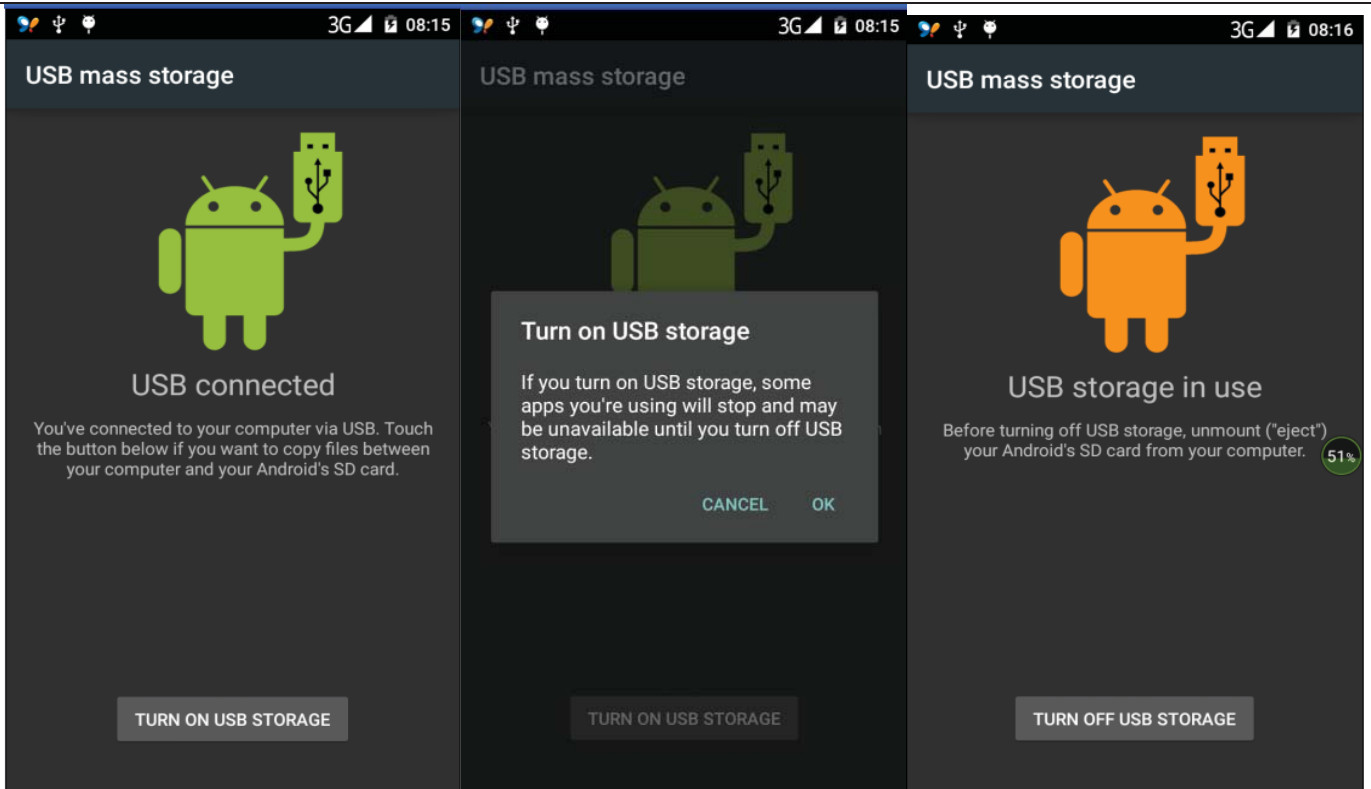
3:Wi-Fi
network
available

4:USB debugging
connected

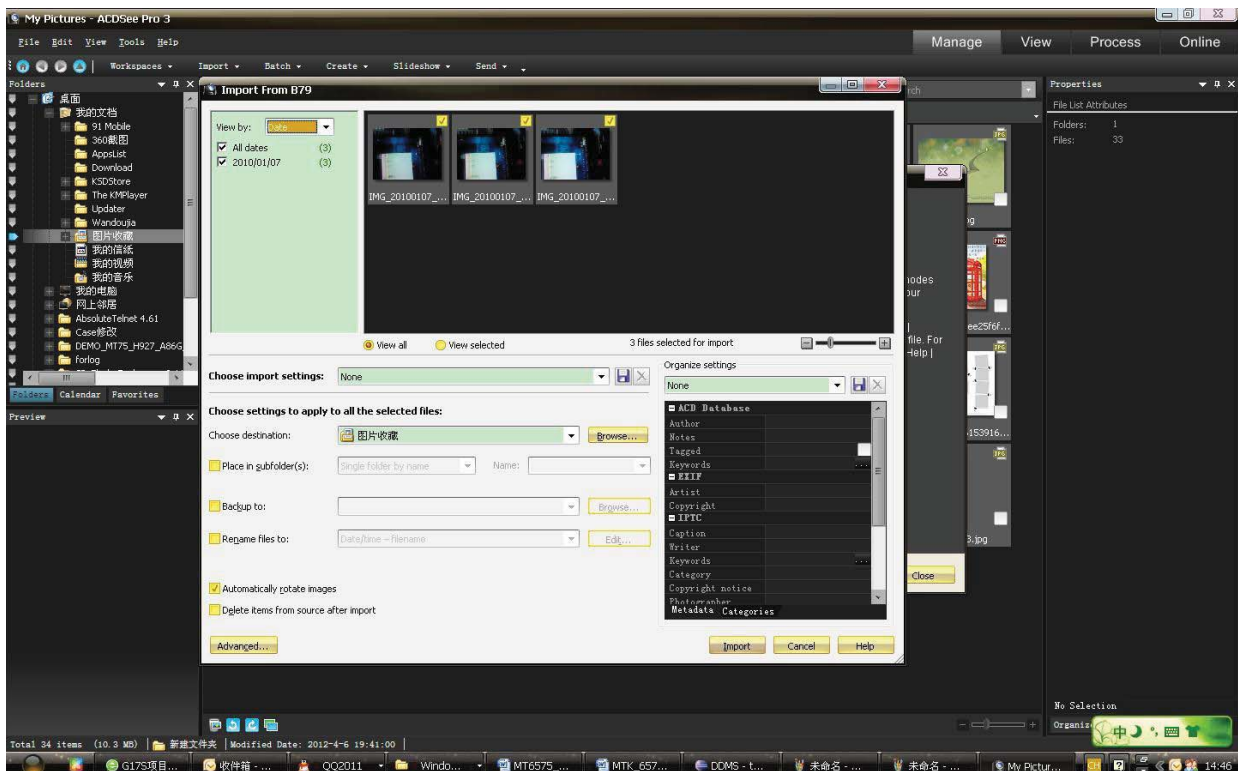


3:

- 4) Insert the SD Card.
Open USB connected.



2) After the connection can be directly in the PC check images captured on camera.




- Notice: Different PC operating systems will have different instructions on how to operate the U disk.
 - 1) WIN7 Can use directly
 - 2) XP will update windows media player to 11
 - 3) Install wpdmtp.inf driver
 - 4) Vista Unconfirmed
- Notice : When on the PC operation assistant tool, the USB debugging function must be open on your phone.

3. Wi-Fi

Wifi provides as far as 300feet (100M) range of wireless network access. If you use a cell phone to connect to wifi, you should connect to the wireless access point or hot spots.

- Notice: The availability and coverage of Wi-Fi signal depends on the number, infrastructure and other objects penetrated by the signal.

Open Wi-fi and to connect to the wireless network

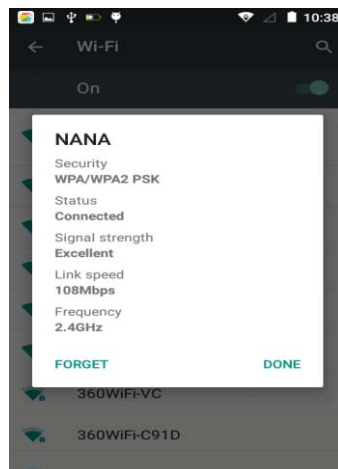
- 1) Press home>menu, then touch settings>wifi and internet
- 2) Select the wi-fi box, to open Wi-Fi. Phone will automatically scan for available wireless networks.
- 3) Touch Wi-Fi settings. Then a list of Wi-Fi network will show the network names found and security settings. (Open network or WEP、 WPA/WPA2 with password).If you enable the notification in Wi-Fi settings, the status box will show this icon  when open available wireless networks are found.

- 4) Touch one of the Wi-Fi choices to connect the network. When you choose open network, phone will connect to it automatically. If you choose WEP, WPA/WPA2 with password, you should type the password first, then touch to connect it.

- Notice: When the phone is connected to the wireless network,

The status box will show this Wi-Fi icon , and the approximate

signal strength(the number of lit bars). Touch the connected network to display the name of Wi-Fi, network, status, speed, signal,



strength, security, information and IP address.

If you want to delete the wireless settings, please touch “not reserve”. If you want to connect to this network, re-enter these settings.

- Notice:

Unless you choose not to reserve the network, there is no need to re-enter the corresponding password the next time you connect to the previously encrypted wireless network. Wi-Fi will search automatically. Any additional steps to connect Wi-Fi networks are not necessary.

- Connect to other Wi-Fi networks
 - 1) In the interface of wireless and network, touch Wi-Fi settings. The Wi-Fi networks available will show on the Wi-Fi network list.
 - 2) Touch another Wi-Fi networks to connect to another network.
- **Notice:** Mobile phone can also surf the Internet by GPRS. Our current SIM card GPRS open after the default boot. Users can

manually choose to open data connection. When using a single card, use the drop down menu to see the status bar, touch "Data connection" to open. When using two cards, go to "Settings > SIM card > cellular data > select SIM1 or SIM2". On the drop-down menu touch "data connection". The status bar is open to the current selected SIM card data connection, touch "data connection" close this SIM card data connection.

4. Bluetooth

Turn on Bluetooth so the phone can be detected

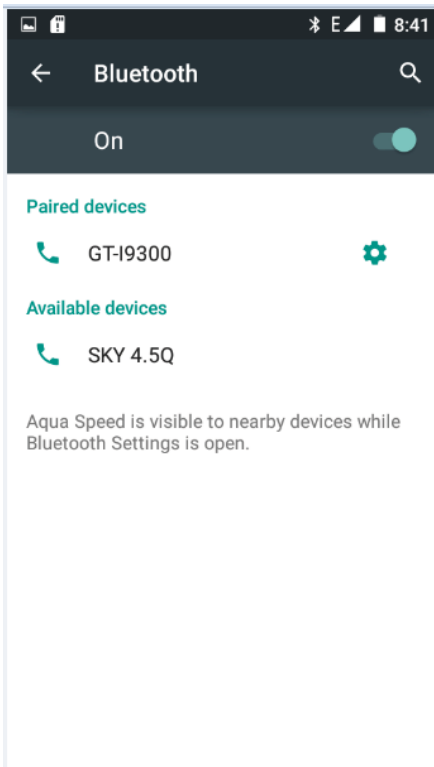
- 1) Press home>menu, then touch settings.
- 2) Touch wireless and internet and choose Bluetooth box to open the Bluetooth function. When it is on, the status box will

show this icon . Touch “scan for devices” to start scanning for all devices within range.


- 3) Touch Bluetooth settings, all the devices found will display in the list under the icon.

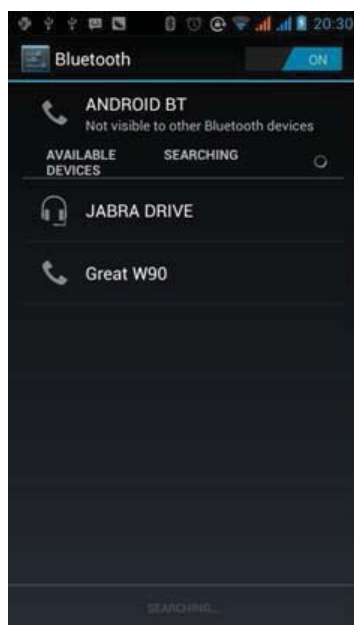
(Bluetooth device is open and visible to nearby equipment work. Other equipment, as long as their bluetooth is on, can be found and paired. As long as other devices can be detected at the same time, you can search for other equipment and pair as well.)

After a device is paired, the system will show the paired device and other equipment available.



- Pairing and connection of Bluetooth headset
 - 1) Press home>menu, then touch settings.
 - 2) Touch wireless and internet>Bluetooth settings, then select Bluetooth box. Your phone will scan for the Bluetooth devices within range ,and show the found devices in the list under the icon.
- Tips:
 - a. If the list can't find your equipment, touch scanning equipment to re-scan.
 - b. Make sure that the devices wanted are under the detection mode.
- 3) Touch headset in the equipment list to finish the connection.

- Notice: Generally Bluetooth devices need password to be paired, 0000 is often used as the default password.
- 4) The pairing and connection status will show under the headset in the Bluetooth devices list. When the headset is connected to your phone, the status box will show this icon () which means connected. You can then use the headset to make or receive calls.



Means that it's Bluetooth headset

Means that phone is under the mode of "can be detected"

Notices:

Only on pairing needed between two Bluetooth devices. Once connected, there is no need to identify partnership and exchange of information.

If you already connect one headset and want to connect a second one, the first one will be disconnected. If you want to switch to the first one, you should re-select it manually in the Bluetooth equipment list.

- Disconnect from the Bluetooth
 - 1) Press home>menu>settings>wireless and internet>Bluetooth settings.
 - 2) In the list of Bluetooth equipment, touch or tap and hold the connected hand-free headset.
 - 3) Press and select "cancel the pairing".
- Bluetooth proximity sensor

After pairing the two devices, you can test out if the signal is strong or weak by the Bluetooth proximity sensor device.

5. Mail

5.1 Gmail

- Create an electronic mail account

Select mail> settings. You can activate or edit existing e-mail accounts as well as create a new e-mail account.

- a. Select mail. A Google account setting interface will appear. Touch 'next step' > create account>enter name, last name and e-mail account.
- b. Google servers determine whether the name can be used, if so, new interface appears prompting enter password. It then determines the password security, users who doesn't meet the requirements need to re-enter the password.
- c. After successfully registering a new Gmail account, an email will be sent automatically for testing.

- Loading mail account

a. Open Gmail skip introduction screen>loading interface appears >select load


b. Enter name, password then load

E-mail account will initialize. A prompt saying "login successful" will appear and all Google accounts will be synchronized.

- Creating and sending emails

When creating mails, select mail > creating mails. Enter the address(recipient), subject and contents. Press MENU to 'attach', 'Add Cc/Bcc', select send or discard.

- Receive emails

You'll hear a tone when new mails are received and the status box will show this icon . Press Menu > 'refresh' to refresh and update the number of the unread mails properly.

- Delete emails

When loading one email account, to delete it you need to restore factory settings. When loading a second one, press the menu button to delete it.

Notice: Many functions depend on Gmail Account, for example: Electronic Market, Google Talk, Sync Contact and Calendar.

5.2 Email

- **Load Email.**

c. Open network connection,

d. In setting the account interface, input the correct email address and password and click next. The mobile phone automatically completes the sending and receiving server Settings. Select desired frequency and user Settings interface. Complete Settings and click next.

e. To create account name, enter the user name and click next. Complete configuration to synchronize mailbox.

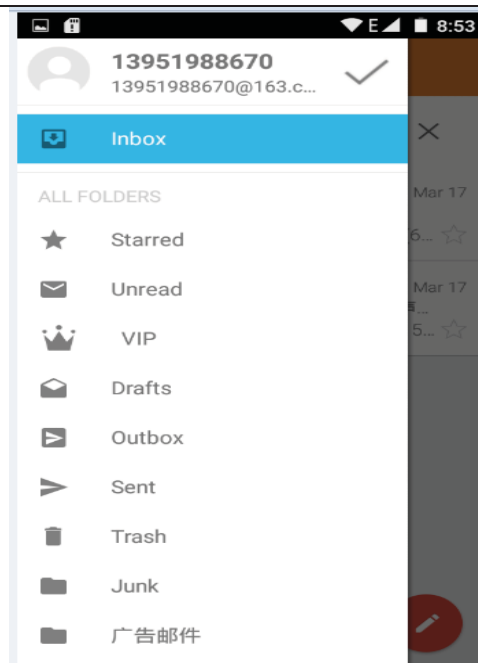
- Create and send Email

When creating mails, select mail > create mails. Enter the address(recipient), subject and contents.

Press MENU to 'attach', 'Add Cc/Bcc', send, and discarded or save as draft.

- Check the Email files

- **Click the inbox on the left to list all the folder options**

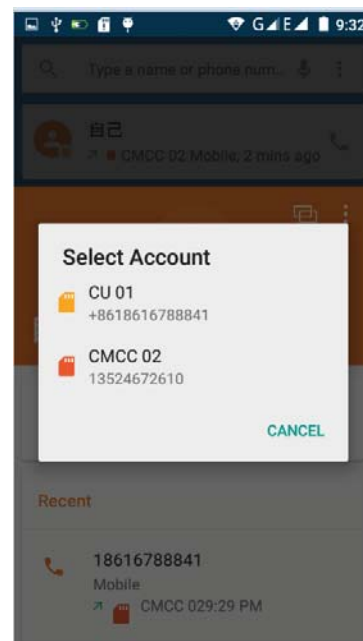
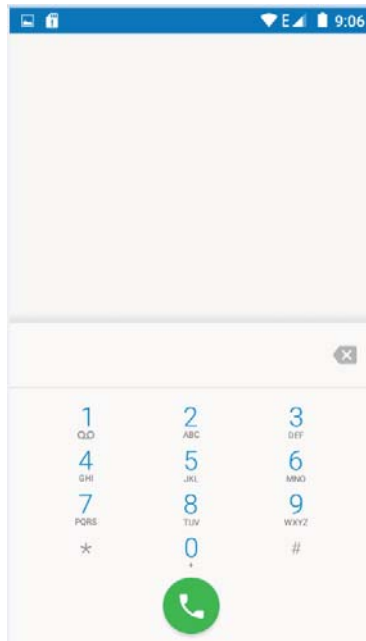
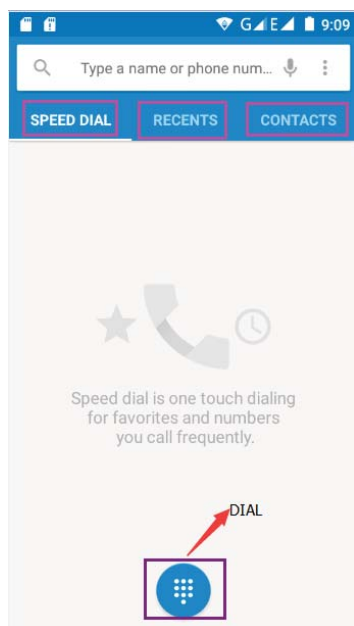


6. Dialing

When the icon of internet server appears on the screen, you could dial or receive calls. The signal bar on the top right corner shows the strength of network signal (The network with the strongest signal) .

- Start dialing

Open main menu>dial >Dial the number on the keypad. You can choose SIM1 or SIM2 to do the dialing.



- Dialing

On the keypad, enter the phone number and click the send key. Then choose one SIM card or internet call. If you

need to call an extension, click the “dial pad” in the bottom of the screen to open the interface or press menu key to select “delay 2 seconds”, and then enter the number of the extension.

On the dialup keypad, input number and click Menu to IP dial-up or speed dial

- Video call: video call refers to a call through the Internet and mobile Internet based on 3G Internet. The call is through the phone between the speech of the real-time transmission and image (uses photographs, items, etc.) as a way to communicate. Only 3G can support this function. Input a number and click video dial-up, when the phone is answered you can start the video call.
- Telephone calls in the call log

Every telephone number called and received in “SIM1、SIM2” will be saved in the phone’s call log. Each call recorded recently will show “SIM1” or “SIM2”

All numbers in the call log can be dialed by clicking the button “dial” on the right side of the screen.

When number list appears, click to show details; long press it to dial via “SIM1 or SIM 2”, edit, delete, save the number or do other operations.

- Receive calls

When a call comes in (top left will show from which SIM card) press “Answer” and slide towards right to the middle button to receive calls.

- To decline a call

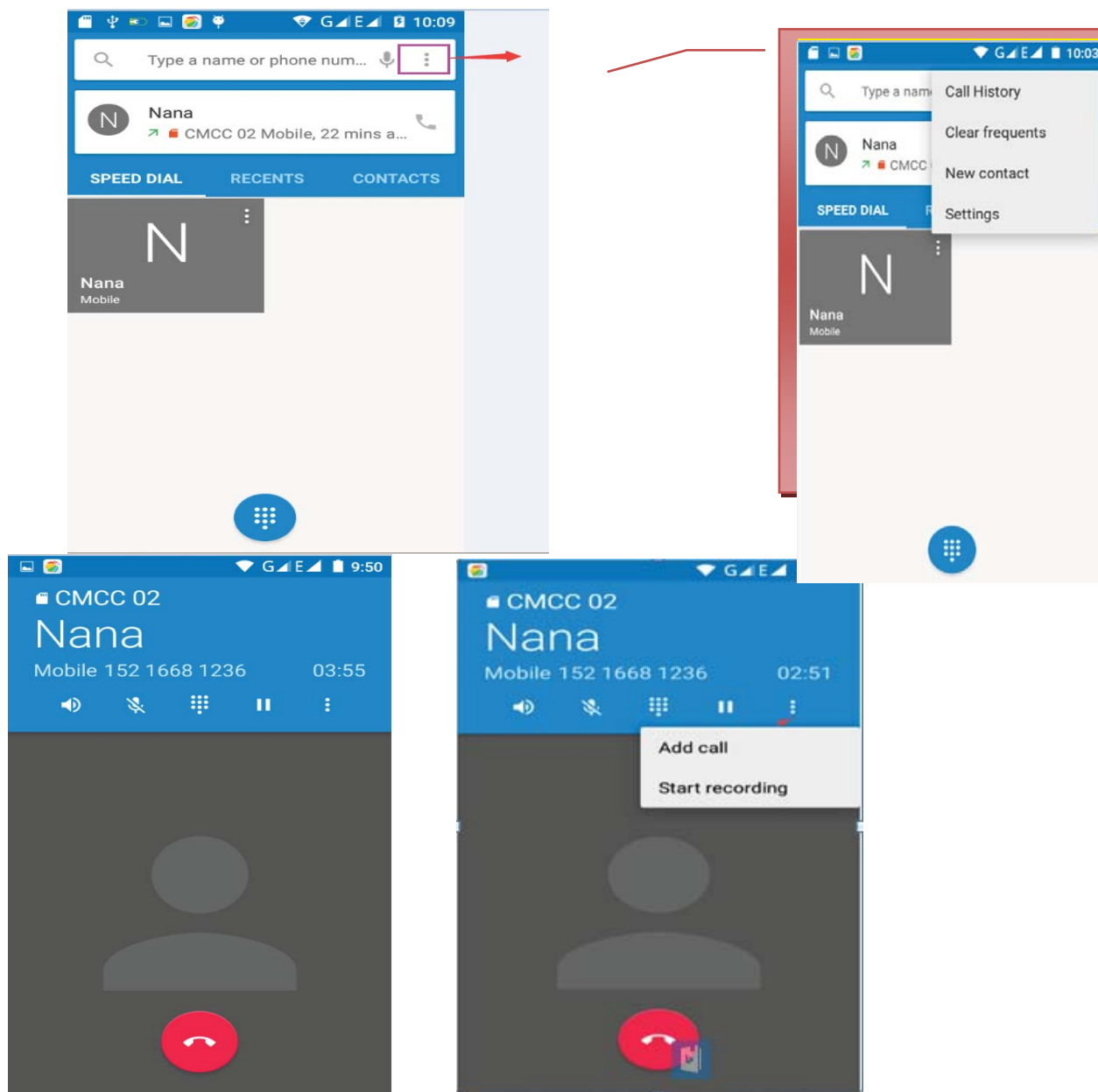
When you receive a call, hold down the "call" button and slide to the left to decline a call.

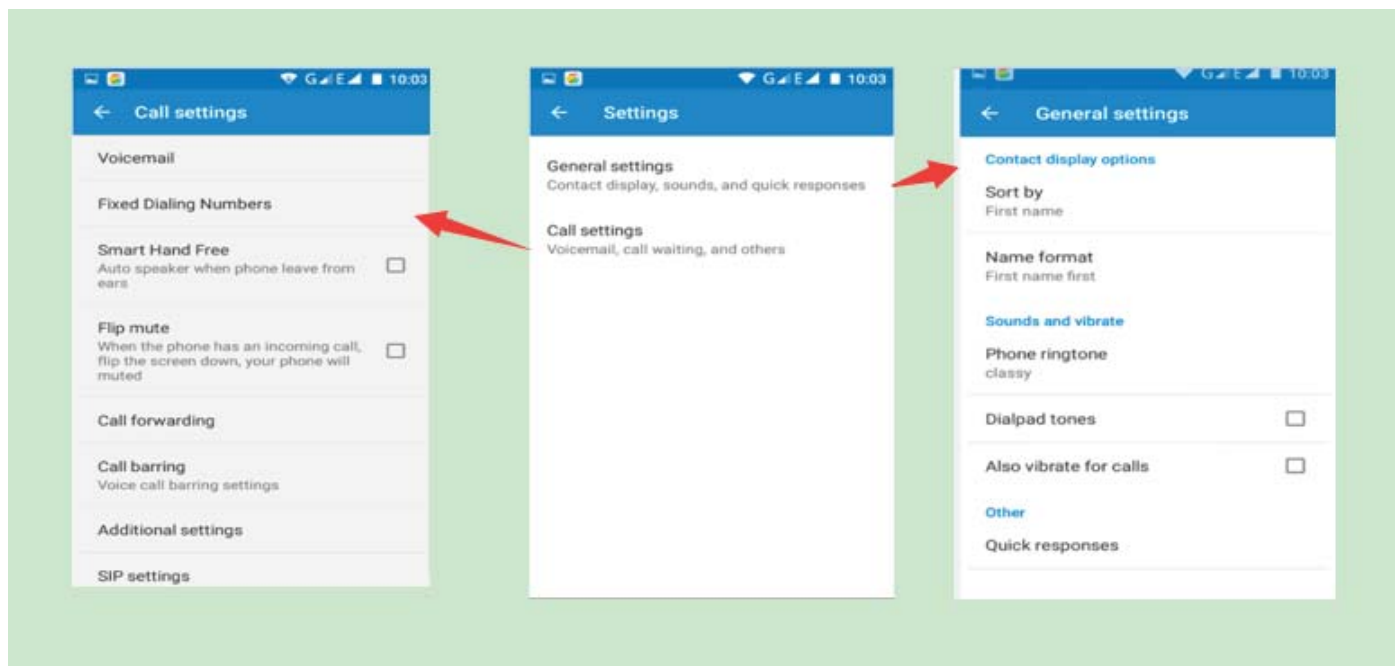
When you receive a call, hold down the "call" button and slide upwards to reply with a text message.

Then reject the call, the caller will receive the corresponding text message.

When the phone is in use and you receive a call, press the “reject” button to decline the call.

- Proximity sensor
- Depending on the distance between the phone and the body, the backlight of the phone will be automatically adjusted.
- During a call when the phone is close to the ear, the backlight will turn off automatically, which could save the battery life and prevent inadvertent touching.
- Two-way call/multiparty call(conference call)
- Notice: This function requires a SIM card with multiparty call features.
 - 1) While on a call
 - 2) Click “Add calls”, dial another call (or receive another call). The phone will default to “call waiting” (settings—dialing settings—other dialing settings). After the call is connected, you can view the status of the call.





- Telephone recording

During the call, click more>start record to record the dialog of the call.

1) Settings>To set other functions of the call in the dialing settings. For example: Call Transfer– After the function is turned on in the settings, you can transfer the call to a certain number.

2) In settings>dialing settings >other dialing settings, open “call waiting”. After it is turned on, you can receive another call when you are already on a call. The answer and reject functions are the same as any regular phone.

Call settings

Voice Call

- 1) **Voice Mail:** In the voice mailbox settings, input voicemail number.
- 2) **IP prefix number:** Set the different IP prefix numbers of each SIM card
- 3) **Call forwarding:** Can forward a call to another SIM card when the line is busy, or you don't want to receive the call or connect to a conference call.
- 3) **Call barring:** Can set restrictions to each SIM card.
- 4) **Additional Settings:** a. My phone number b. Call waiting.

Internet call

- 1) Account
- 2) Use Internet calling

Other Settings

- 1) **Fixed Dialing Numbers**
- 2) **Minute Reminder:** Turn on minute reminder at 50s of every minute.
- 3) **Quick Response:** Can edit the content of the text messages sent when a call is rejected.

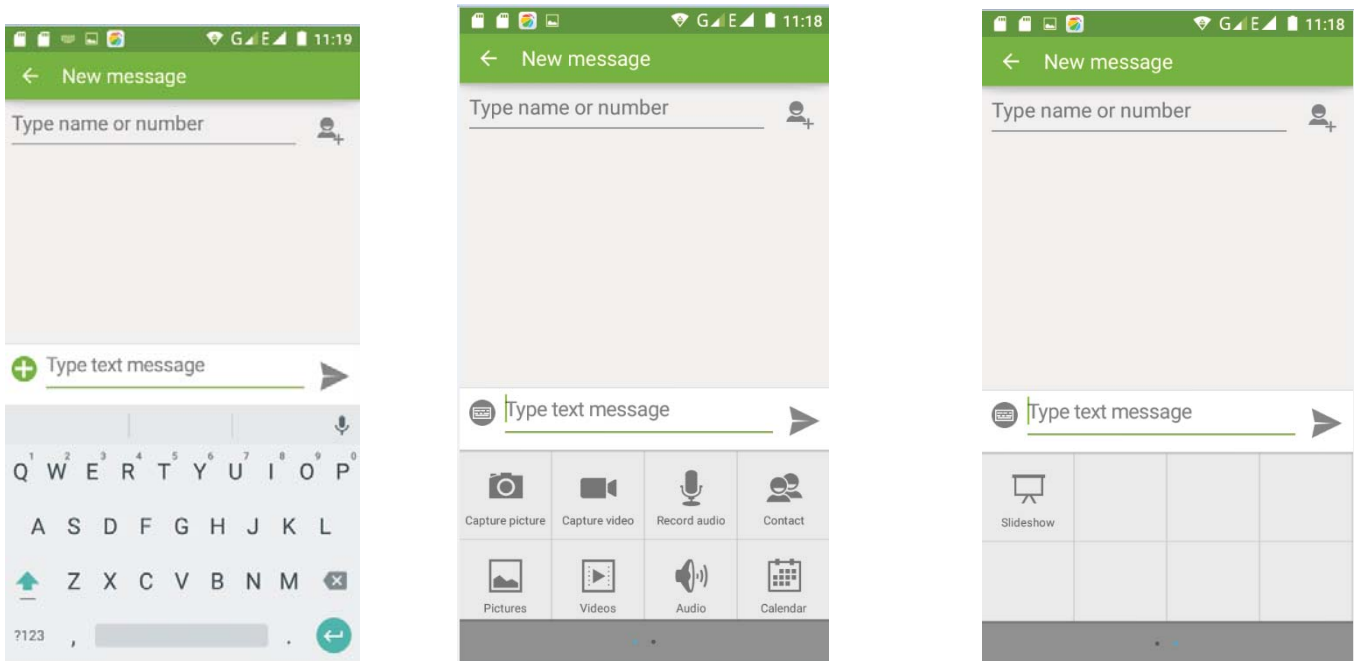
7. Messaging

- **Important:** The title of the message of the phone is the phone number. The dialog will be saved under the phone number, instead of the usual folder structure. Messages with blue background are those received, and messages with white background are those sent.
- **Send SMS to certain phone number**
 - 1) Press home>messaging, touch “new messages” .
 - 2) On the “edit” screen:
 - a. Click “recipient” box to start typing, you can also click “enter” box to start typing.
 - b. Click the button of “send from SiM1 or SIM2” to send.
 - c. When the recipient and the content are not empty, click the send button to send the message.

- **Send MMS to certain phone number**

When creating message that is defaulted as SMS, it will be turned to MMS when the following operations are done. You can send MMS by clicking “send” after editing.

- 1) On the "writing" screen, press the Menu button, click "add theme", it will automatically turn the message into an MMS message:
- 2) On the "writing" screen click on the "plus" icon on the left to add an attachment. After the attachment has been added to the message, the message will be automatically convert to MMS.



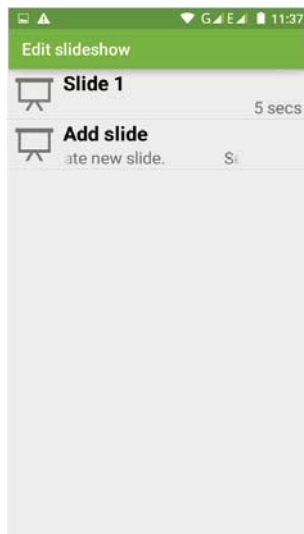
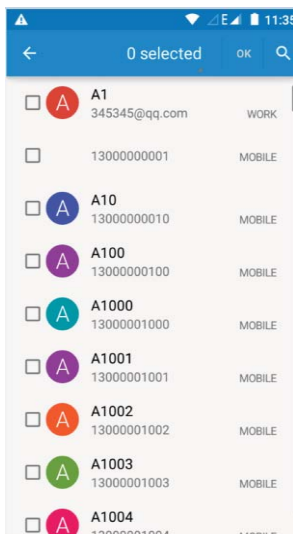
- **Send messages to multiple numbers**

Enter multiple numbers in the recipient box dividing each number by a comma.

Click on the button on the right side of the recipient box with a plus icon to choose a contact group in the address book.

Notice: Currently, the phone can only support up to 100 recipients.

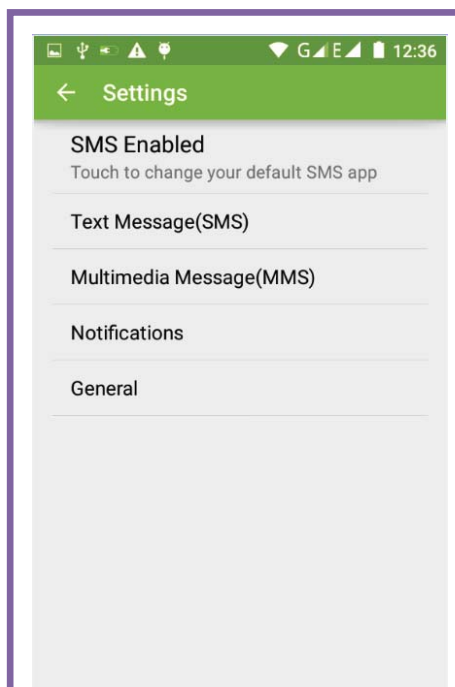
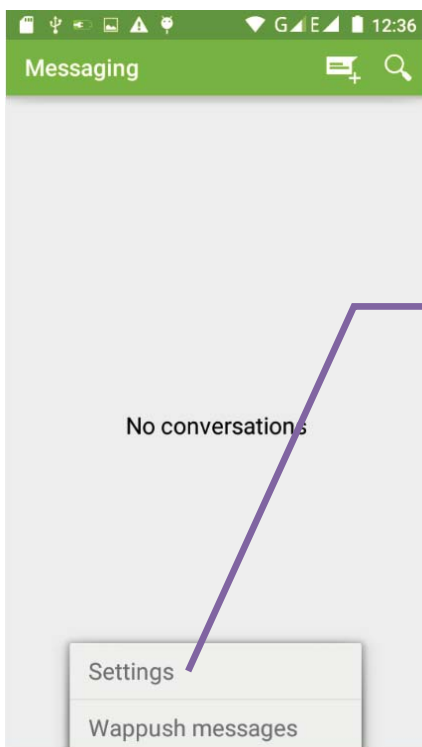
If the number of contacts added is more than 100, you will get a warning message telling you that you were unsuccessful in adding a new contact. You must manually add the recipient again.



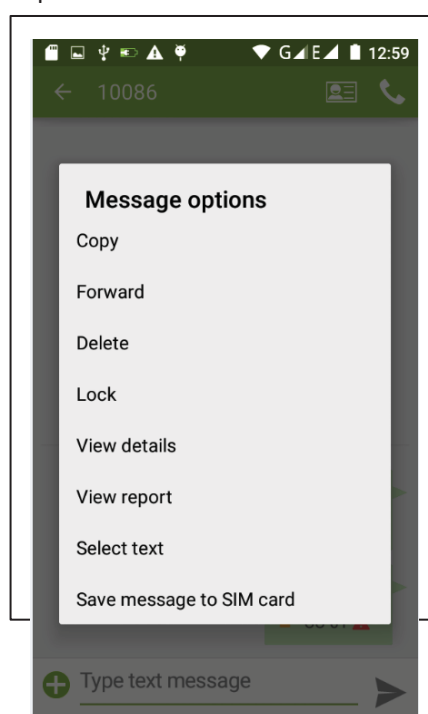
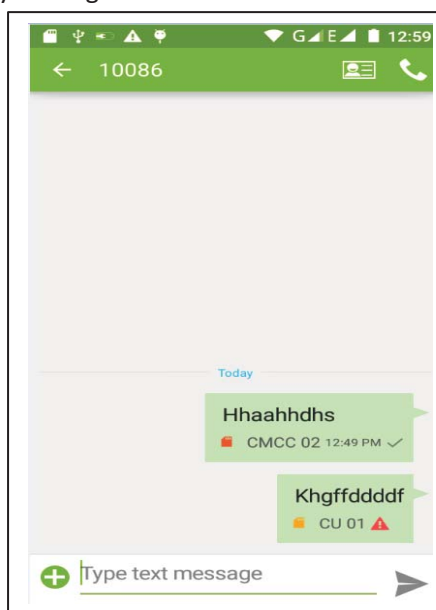
Notices:

- a, If you want send MMS with many pages, you should select "append PPT" in the "append" screen.
- b, You can append 10 pictures in GIF or JPEG format.
- c, Click "add themes". **Under the recipient box a "theme" box will appear and the message will automatically turn into MMS.**

- Information on the edit Menu with Menu functions

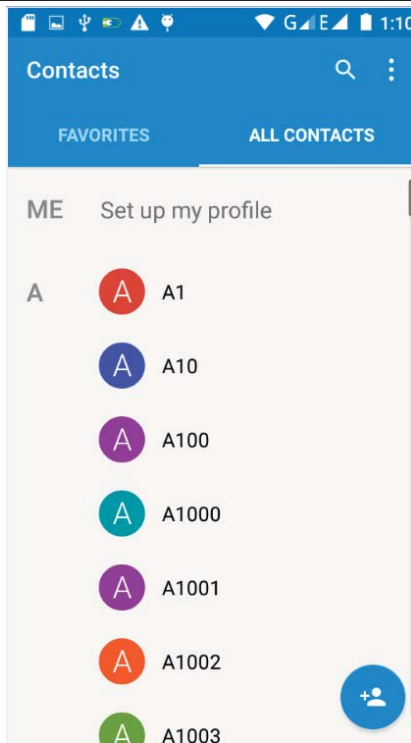


- 1) When the message is sent successfully, the mobile SIM1 or SIM2 sends a message of time it was sent and next to the message a checkmark will appear.
- 2) When the message fails to send, a red triangle with exclamation mark will appear. Use the menu button to edit the message or perform another function.
- 3) Hold your finger on the information desired to can carry out the selective operation.



8. Contacts

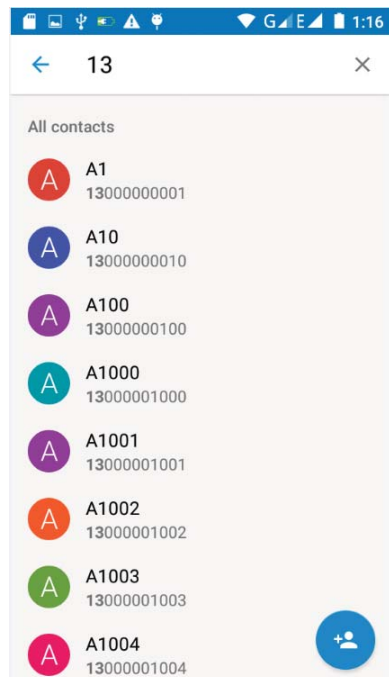
- Open the menu applications>contacts
By default the mobile phone contacts and SIM card contacts will be displayed and sorted by the contacts initials.



1) Click Search Icons to enter the contact search interface.

Enter a series of numbers, letters, or part of a name. Contacts with the information entered will show in the search results.

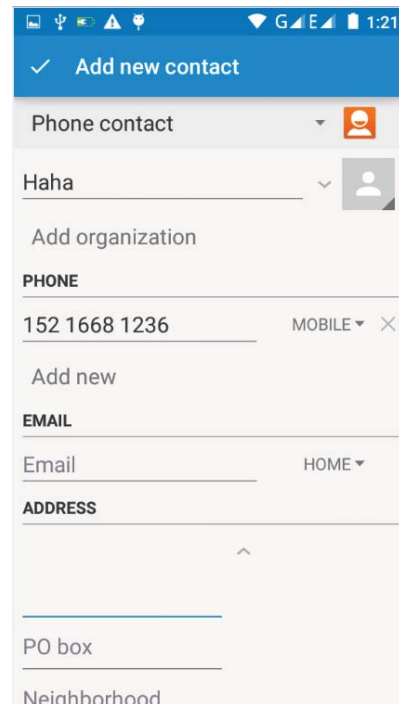
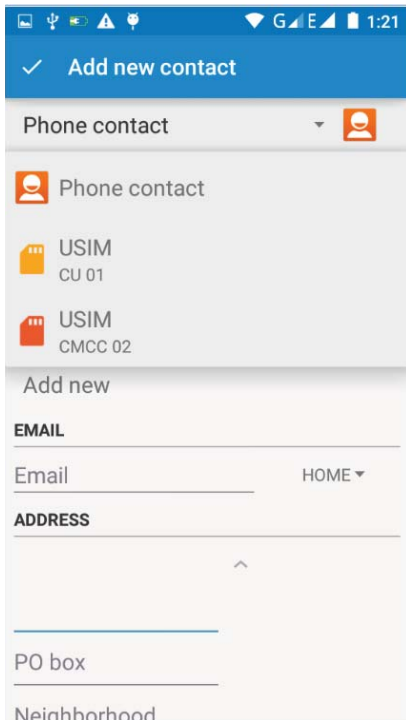
If the search finds no matching contacts, a message saying 'no contacts found' will appear on the screen.



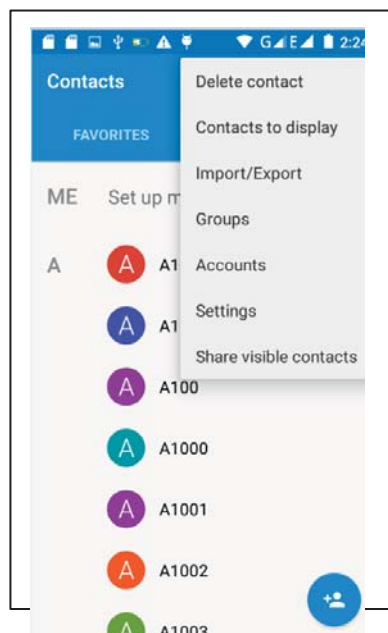
2) Click the “Add Contact” icons to create a new contacts

On the contact editing screen, you can choose to save contacts to phone or SIM card.

You can edit contact picture, name, telephone number, group, save to, and more. Then click "finish".



4) In contact interface, click on the Menu button

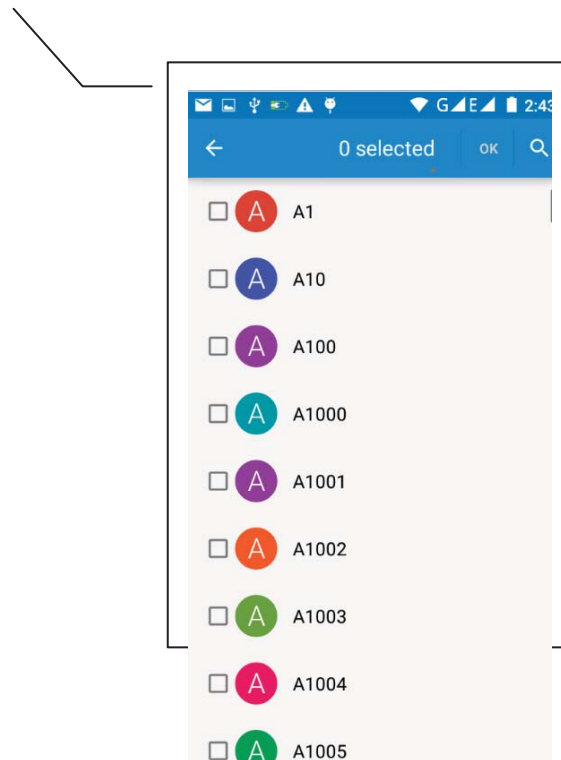


a. Menu >Delete contacts

Click on “All” to check all the contacts. Then click the delete button to delete all the contacts including cell

phone and SIM card contacts.

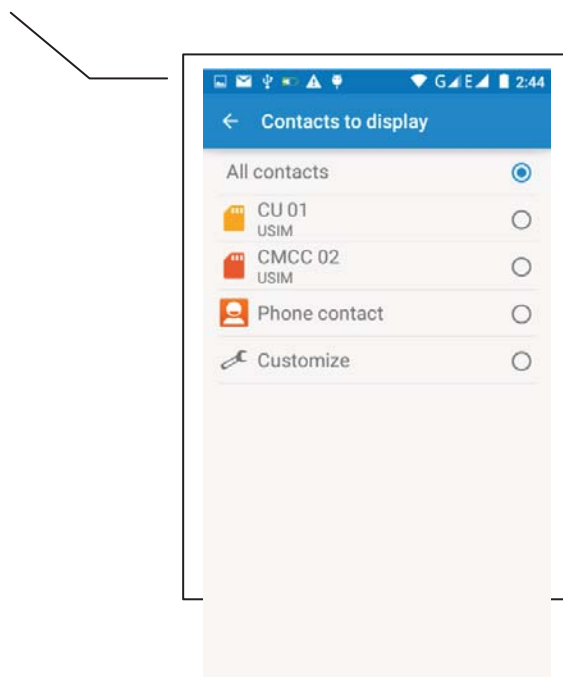
To delete only a selected few, you can check one or more contacts, click delete, and only the selected contacts will be deleted.



b. Menu> To display the contact

You can choose one or all contacts, contacts from one SIM card, or the mobile phone contacts.

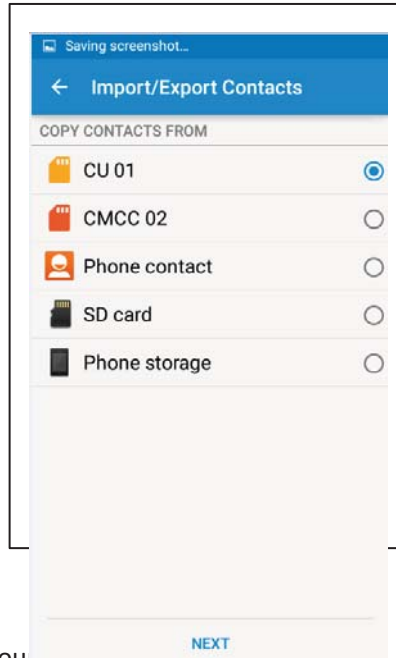
You can choose by name, by SIM card, or by cell phone, and you can decide whether or not to show all the contacts or just a single contact.



c. Menu > Import/export

You can access the contact information of the contacts on the phone, SIM card, or SD card, and copy from one location to another.

First select the copy source and then select next step. Select "copy contact to" to copy the contact.



d. Menu > Groups

Click on the "group" icon add a new group.

In "the group name" column input group name, in "type in the contact's name" column you can input part of a contact's name to search through all the contacts, and then add to the group. Click "finish".

1) In a group, click on the Menu button to access Menu functions

2) Menu > Update

You can modify the group name, delete or add a group of contacts

3). Menu > Delete

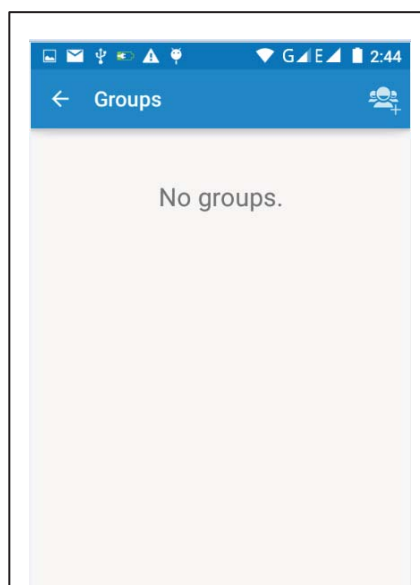
You can delete the group, this will not delete the contact itself.

4). Menu > Send messaging by group.

A new message will automatically open, adding all the contacts in the group on the address bar as recipients.

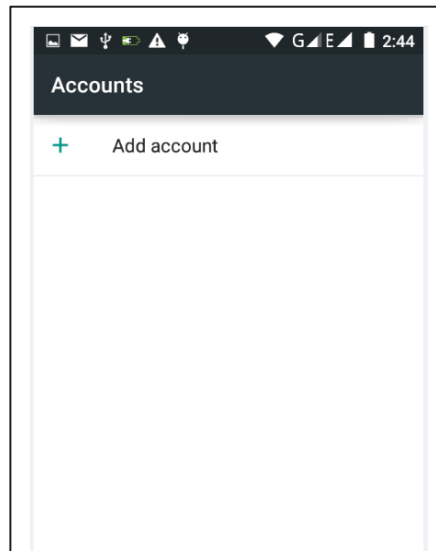
5). Menu > Send Email by group

If the contact in the contact group have an email address, this function will automatically open a new mail and add the E-mail address of each contact in the address bar as the recipients.



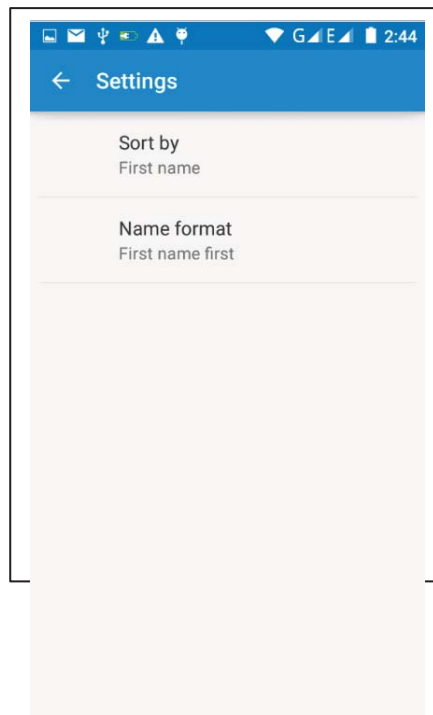
e. Menu >Accounts

Under Account and Synchronization you can set the synchronization frequency and synchronization settings, such as automatic synchronization.



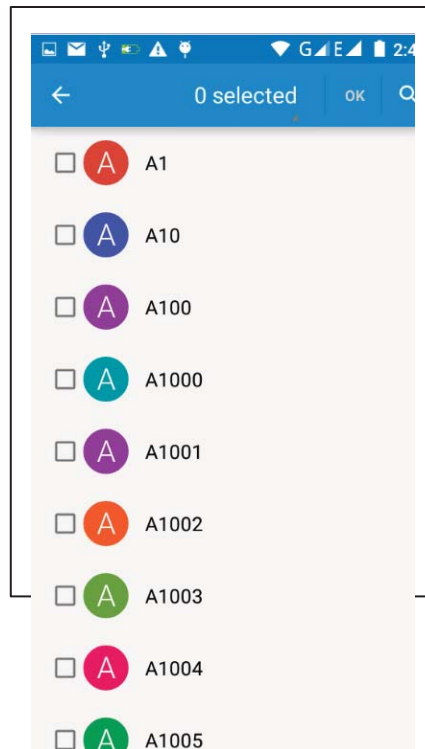
f. Menu >Sttings

Can be set up sorting and the form



g.Menu >Share visible contacts

All contacts can be imported into the SD card, or through bluetooth, email, text message or MMS share



9. Internet Explorer

Internet explorer

- 1) Open the browser screen and touch the url address bar.
- 2) Using the keyboard input web address. If the address you entered is in line with an existing web address, the address will appear on the screen. You can touch the url to go directly to the page or continue to enter url.
- 3) When browsing, touch the menu button to access all the menu functions.

a.Menu >Refresh

Refresh the current browsing web page

b.Menu > Stop

Stop loading the current web page

c.Menu >Home

If you don't have a set homepage, the Home button will take you to a preset site. The default home page is the page that first opens when you begin browsing.

d.Menu >Save to bookmarks

Will set the address of the current window as a bookmark. Click on a bookmark on the list of bookmarks to open the bookmark url.

e.Menu >Close

Exit the browser or minimize the browser.

f.Menu >Save for offline reading

Automatically save the current page and content, in order to browse next time.

g.Menu >Share page

Select the bluetooth, email, SMS or other ways to share the current web page

h.Menu >Find on page

Find information on the page you are currently browsing

i.Menu >Request desktop site

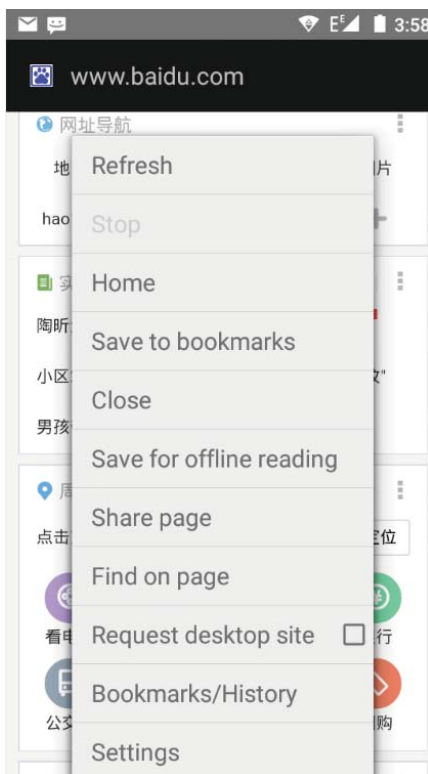
Browse the pages in the PC format

j.Menu >Bookmarks/History

Switch to bookmarks/history/save the web page

k.Menu >Settings

Browser contains a variety of Settings



Browser Settings

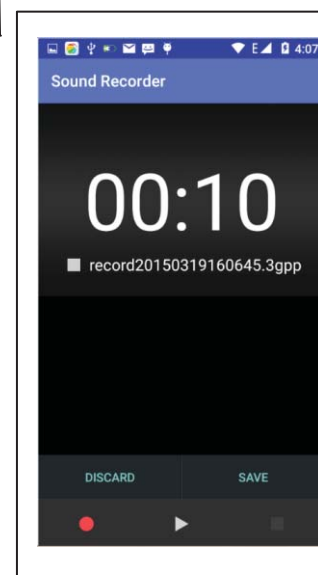
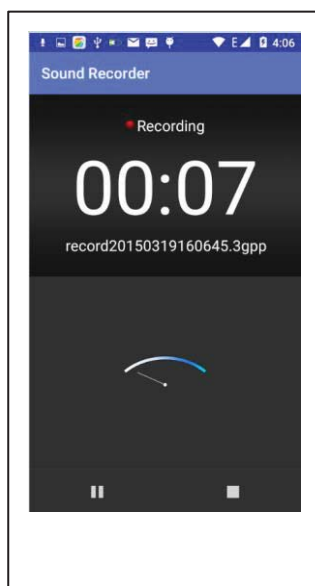
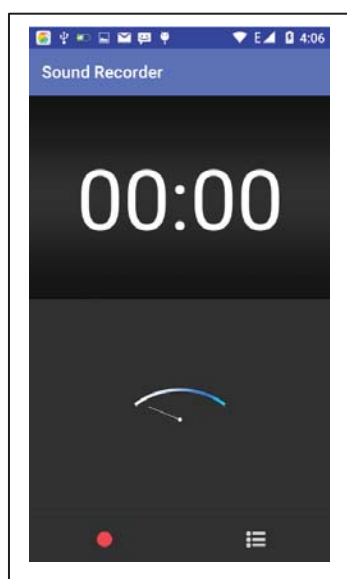
- 1) general Settings, including home page set functions such as below.
- 2) privacy and security, including clear web page history, clear the cache, and other functions
- 3) auxiliary functions, including size, click operations, and other functions.
- 4) advanced, including web browsing, page adjustment, plug-in enabled, and other functions.
- 5) bandwidth management, decide whether to load pictures when loading the page.
- 6) lab, including open fast control and full screen display function.

10. Recorder

Recorder can record voice, and send it quickly via Bluetooth or MMS as well as set it as ring tone.

- Notices: recorder can only save the audio files as AMR format.
- 1) Click the recorder application.
 - 2) Keep the phone's microphone near the voice source.
 - 3) Click recorder to record voices ,and click to stop or Recordinglist.

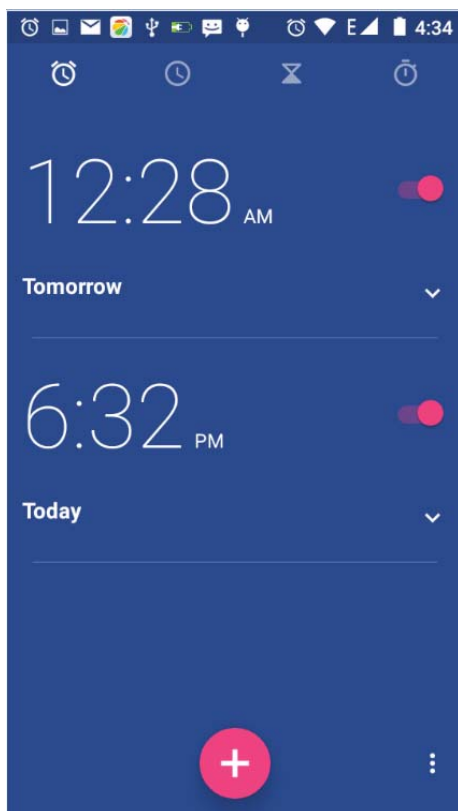
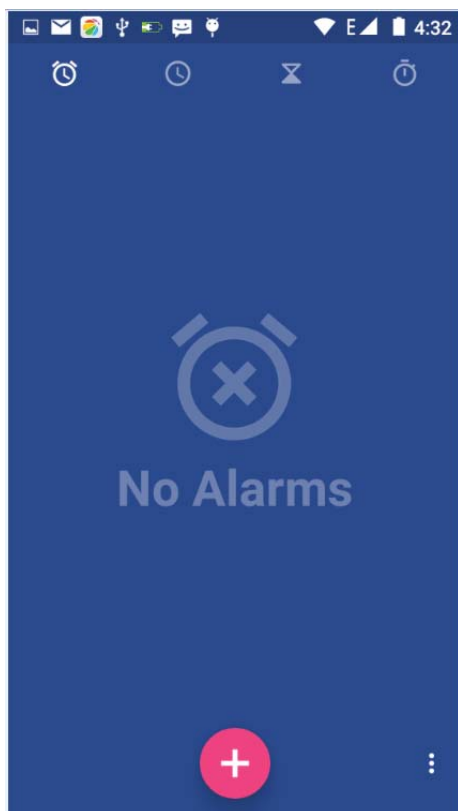
All recordings save in my recording folder in the default music program.



11. Clock



- 1) Open the menu of application, click , to open the alarm clock Settings screen



- Alarm

After the alarm time is set, once your phone reaches the set time it will alert you by ringing or vibrating to achieve its function. Press Menu to add alarm, you can also add it from the adding screen. You could set the alarm according to your needs. On the alarm screen, it will show three closed alarms (two alarm clocks are Monday to Friday 8:30,9:00) .

Edit

You can edit the current alarm, you could edit time、ringing tones、vibration、repeat form and tabs.

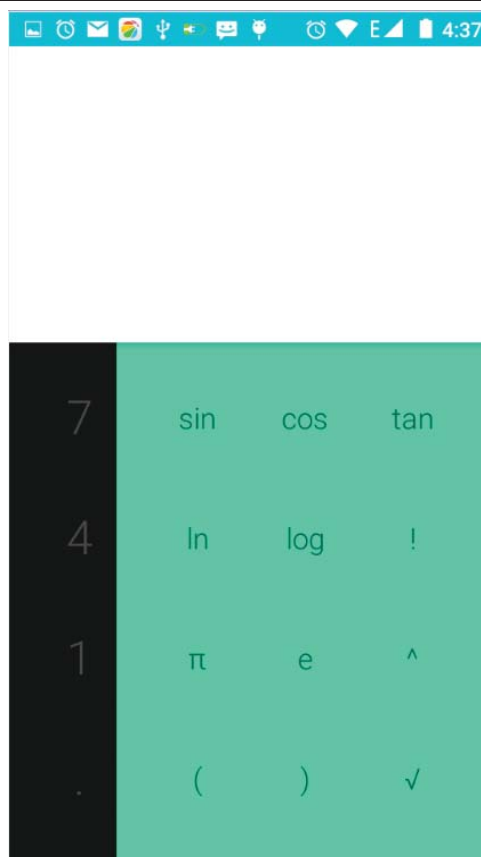
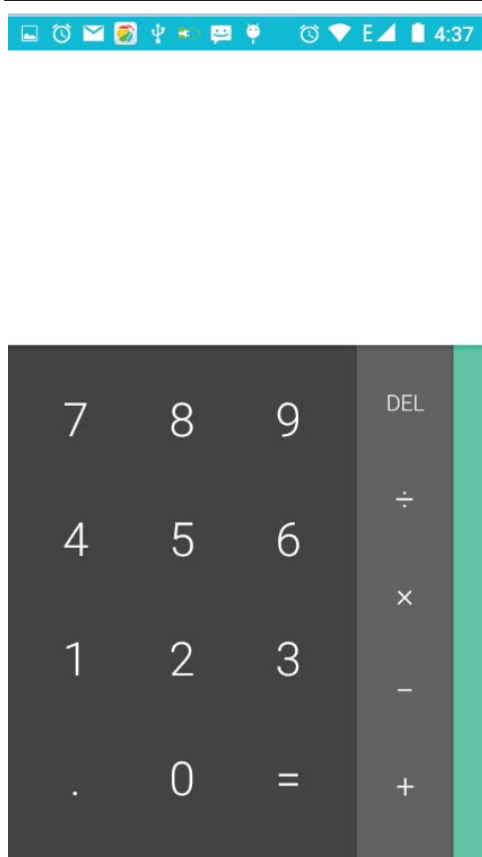
12. Caculator

Calculator

With this function you can use your phone as a calculator. It can do some simple calculations.

- Touch the number keys to make it appear in the blank box.

On the calculator screen, press MENU button or hold down the screen to the left to show the advanced panel.



13. Camera

13.1 Camera

- Prior preparation

Install memory card before using the camera or video camera. All your photos or videos taken by the phone are stored in the memory card.

- Open camera

Press home, touch menu, select camera. Take pictures

- 1) Aim at your object with the screen.
- 2) Touch the “shutter” button on the screen.
- 3) After taking the photo, photos will be saved to the camera’s gallery folder with the title of time the picture was taken.
- 4) You can view the photos by touching the preview box button.
- 5) Camera settings

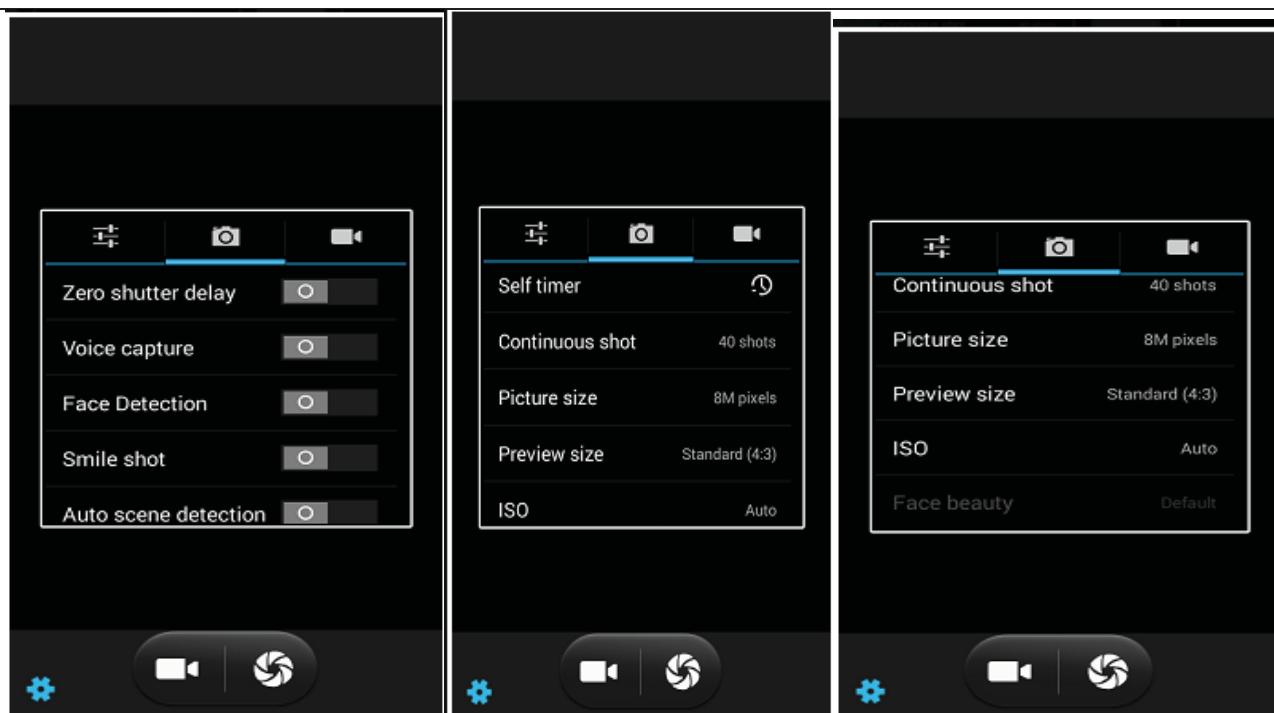
You can touch the button of “setting Menu” in the camera screen to access the settings

Under camera viewfinder mode, press Menu, you can switch to video or photo gallery.

The top right of camera viewfinder mode will display the preview of the last picture taken. Touch preview box to display the photo on full screen. You can enlarge it to view details.

Each Camera Function





- Shared Settings of Camera and **Video camera**

- 1) Flash mode: Auto, On, Off.
- 2) GPS location info: On, Off
- 3) Exposure: -3 -2 -1 0 +1 +2 +3
- 4) Color effect: None, Mono, Sepia, Negative, Aqua, Blackboard, Whiteboard.
- 5) Scene mode: Auto, Night, Sunset, Party, Portrait, Landscape, Night portrait, Theatre, Beach, Snow, Steady Photo, Fireworks, Sport, Candle light.
- 6) White balance: Auto, Incandescent, Daylight, Fluorescent, Cloudy, Twilight, Shade, Warm fluorescent.
- 7) Image properties: Low Medium High
- 8) Anti-flicker: Auto Off 50HZ 60HZ

- **Camera Settings**

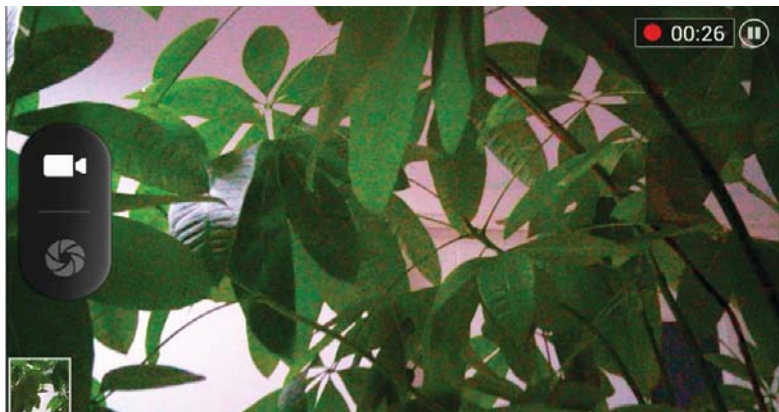
- 1) Capture mode: normal, Live Photo, Motion Track, Face beauty, Panorama, HDR, Multi angle view
- 2) Zero shutter delay: on off
- 3) Voice capture: ON—Capture and Cheese, off
- 4) Face Detection: ON, Off
- 5) self timer: off, 2seconds, 10seconds
- 6) Auto scene detection: ON, Off
- 7) continuous shot: 40 shots, 90 shots
- 8) picture size: QVGA, VGA, 1M pixels, 1.3M pixels, 2M pixels, 3M pixels, 5M pixels, 8M pixels
- 9) Preview size: Full screen, Standard(4:3)
- 10) ISO: ON, 100, 200, 400, 800, 1600

13.2 Video camera

- Prior preparation

Install memory card before using the camera or video camera. All your photos or videos taken by the phone are stored in memory card.

- Take video



Press the home page, touch the menu, select the camera. Switch to video mode.

- 1) Aim at your subject with the screen.
- 2) Touch the shutter button on the screen.
- 3) After shooting, video file name will be automatically selected and saved to the gallery in the camera photo folder.
- 4) On the top right-hand corner you can view images and the video preview. Touch the preview box to display the video on full screen video. Touch the play button to broadcast the video.

You can touch the “set” button on the camera screen to access the settings

Under camera viewfinder mode, press Menu, You can switch to video or to photos gallery.

- Videos settings

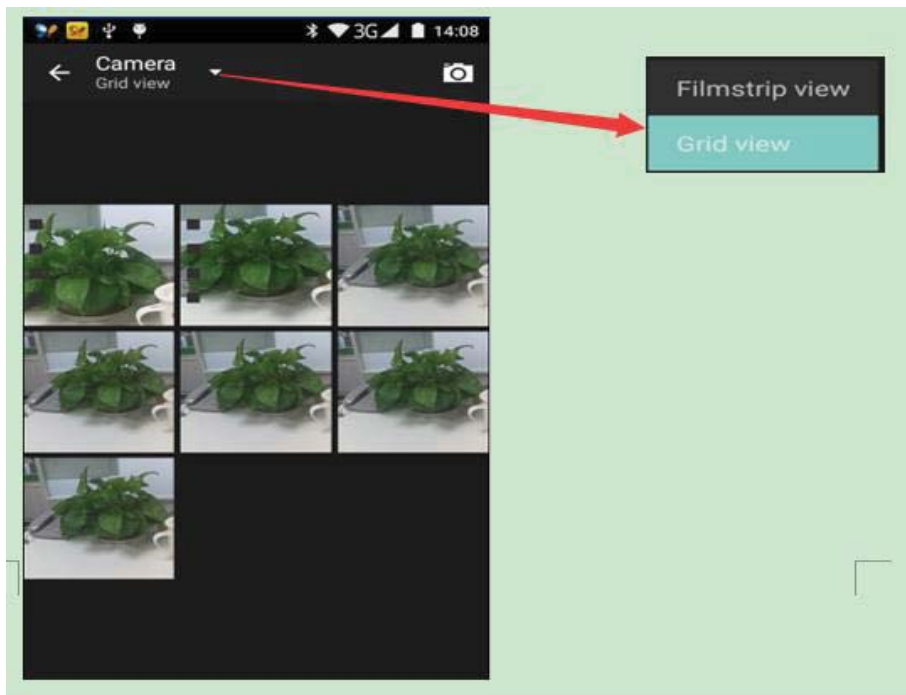
- 1) Noise reduction: ON OFF
- 2) EIS: ON OFF
- 3) Microphone: off, on
- 4) audio mode: meeting, normal
- 5) time lapse interval: off, 1s, 1.5s, 2s, 2.5s, 3s, 5s, 10s
- 6) video quality: low, medium, high, fine

14. Images

- Open images

Press home, touch the applications tab, then touch the photo gallery.

In the camera screen, press menu to open it, then touch to operate.

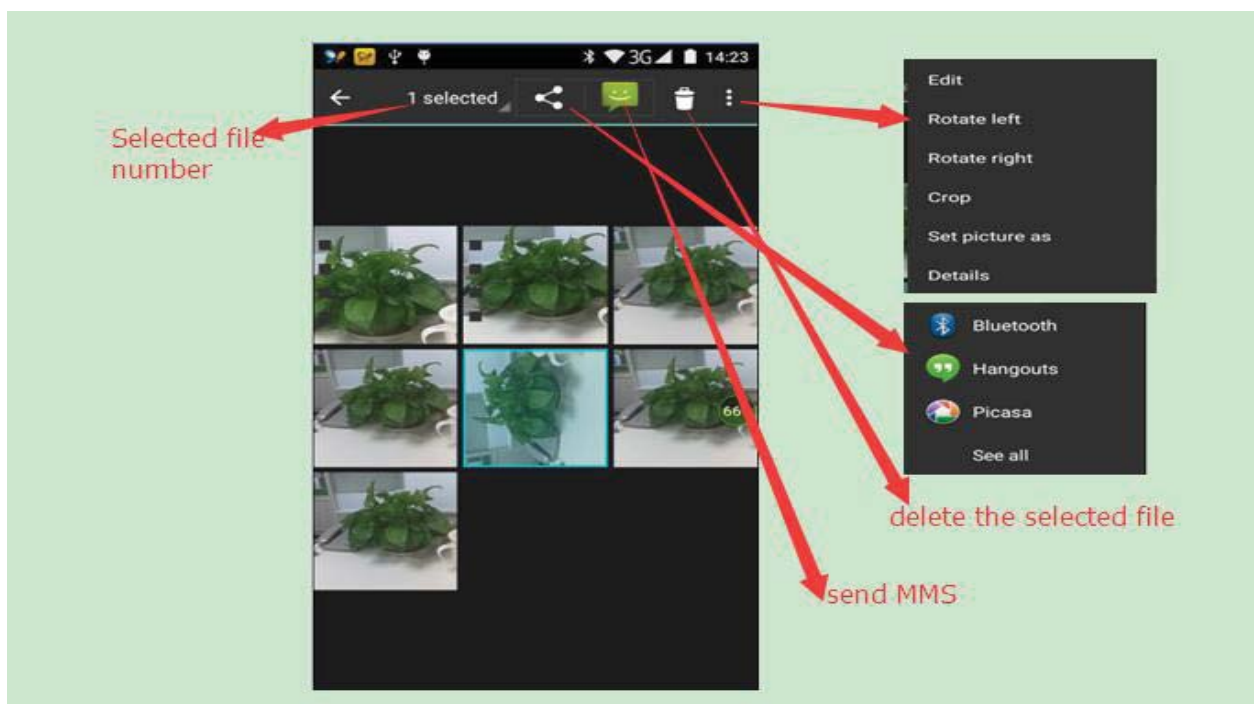


Gallery interface

- A. In the main gallery screen, by tapping the upper right corner of the camera button you can quickly switch to the camera application
- B. In the main gallery screen, folder thumbnails will be displayed with the folder name and the number of embedded files.

Files Interface

- a. In the library interface there is a play button located in the upper right, click on the button to play all the image files in a slideshow.
- b. Click on the images to view the image.
- c. Long press an image file to access a popup menu of available functions.



Share Photos

- Long press the selected folder or photos in picture viewer interface to share. Methods include bluetooth, mail, and information sharing.
- A. Use email to send pictures: choose Gmail or E-mail, pictures will be automatically attached to the email. Write your information, and click send.
- B. Using information to send pictures: select information, images will be automatically attached to the MMS. Write your information, and click send.
- C. Use bluetooth to send images: under the list of Bluetooth devices, choose paired bluetooth devices, pictures will be transmitted via bluetooth.

See photo

- In the photo viewing interface, you can slide the pictures on the screen forward or backward view the next or previous photos.

Edit pictures

- A. color effects: none, stamping, restore ancient ways, white and black, drift in addition to silver shadows, instantaneous, latte, blue, edition print, negative impact
- B. clip: straight, pruning, rotate, mirror
- C. editor brightness: automatically adjust color, exposure, halation, contrast, shadow, nature saturation, sharpness, curves, hue, saturation, black and white filter

• Check pictures

In the photo viewing interface, on the screen slide forward or backward to view and edit photos.

- Edit light: Fill Light Highlights Shadows Auto-Fix.

- b. Edit image effects : Cross-process Posterize Lomo Documentary and so on.
- c. Color Effects: Warmth Saturation B &W Sepia Negative Tint Duo-tone Doodle.
- d. Crop: Crop Red Eye Straighten Rotate Flip Sharpen.



● Clip pictures

- a. If you want to adjust the size of the clip, please hold the edge of the cutting tools. The arrow for clipping appears. Move your fingers outwards or to the center to drag and adjust its size.
- b. If you want to adjust the picture and keep the proportion, please hold down any of the four corners.
 - a. If you move your fingers outside the picture area, please move your fingers back to picture area and follow the directions mentioned above.

● Shooting video

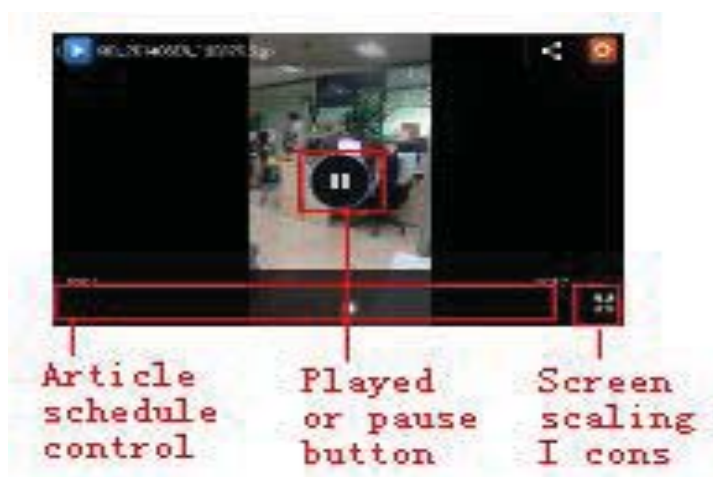
- 1) In the photo gallery, touch the video album and then choose the video you want to watch. You can start playing video.
- 2.) Touch the screen to display playback controls.
 - A. Schedule control: drag the control bar to play the video at any point.
 - B. Screen zoom button: press ratio play, full-screen playback, maximum play.
 - C. Suspend or continue to play: when the video is playing, click pause to pause the video. When the video is paused, click play to continue to play the video.

● View images

- 1) In the picture interface, touch photo album to view images.
- 2) Touch the thumbnail to view pictures on full screen.

You can choose to display small or large thumbnails. Hold down the screen towards the left side to view the next photo or towards right to view the previous one.

In the photo album or list, press and hold down the picture towards left to view the next picture, or towards right to view the previous one.



15. Music

The phone can play digital audio files saved in the memory card. The following formats are available :AMR、 M4A、 MIDI、 MP3、 WAV、 OGG.

- Open Music

Press home, touch the applications tab, touch music. The Music Media screen will appear.

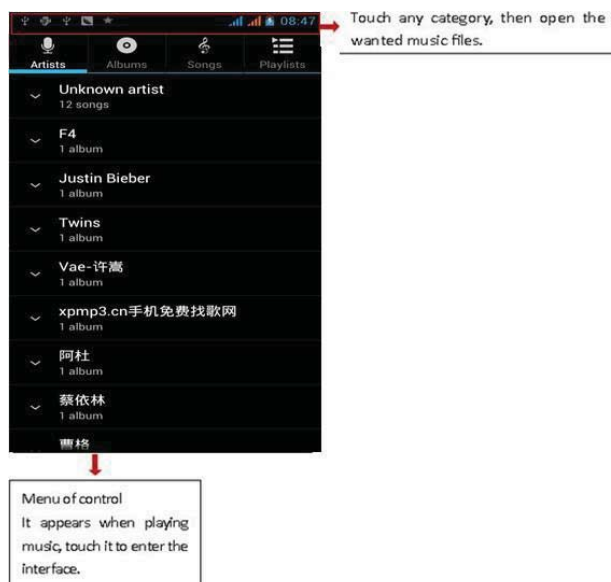
- Music Media

Your music files are classified according to the following four categories: Artists, albums, songs and play lists. Touch one of these categories to you can view the list.

The right side of the screen will display the current playback mode, looping, random play or lined up to play, etc.

The progress bar at the bottom can control the broadcast schedule, fast forward, fast rewind, and so on.

Continue the operations, until your wanted music appears. For example, if you choose Artists a list of artists will sorted in alphabetical order. Choose any on to open the list, all the albums and songs will appear. Select one album to play the songs in the album.



- Tips: You can play all of the songs in the music media screen in random sequence. Press Menu, then touch the Party Shuffle. The first randomly selected song will begin playing. To close the Party Shuffle, press Menu, then touch to turn off the Party Shuffle.

a. Menu button > party shuffle

Tip: In the music library or play screen, you can play all songs in the broadcast media library in a random order. Press the Menu button then touch party shuffle to start playing the first randomly selected song. If you want to stop playing the party shuffle, please press the Menu button, then touch close party shuffle.

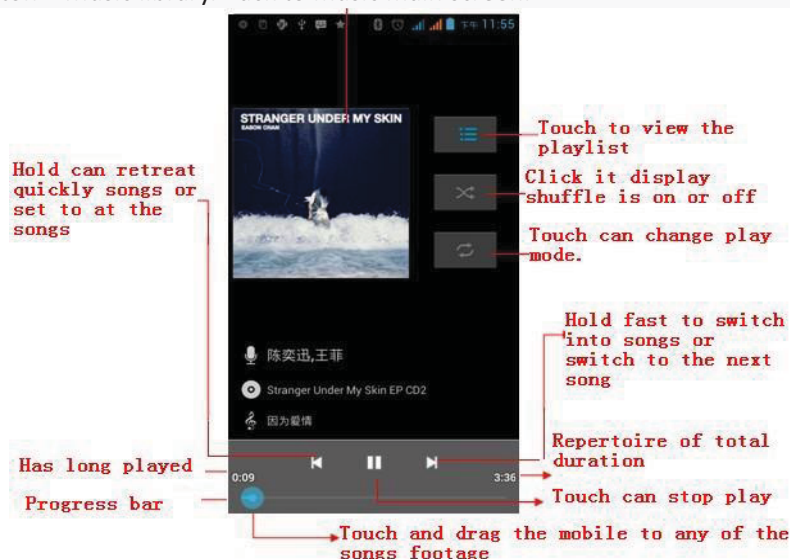
b. Menu button > Add to the playlist. Add the current playing song to the users playlists.

c. Menu button > Set the current song to the cell phone ringtone

d. Menu button > Delete. Delete the current playback songs and permanently remove from memory.

e. Menu button > Sound. Open the equalizer, the user can adjust the effect of music.

f. Menu button > Music library. Back to music main screen.



• Build playlists

- 1) touch music library on any of the categories.
- 2) in the list, slide the screen upwards to browse to the play lists of the artist, album or song.
- 3) Long press on the artist, album or song, and then touch the options menu to add to the playlist.
- 4) The song is added to the playlist window, touch the new playlist.
- 5) enter the name of the new playlist, and then touch save.

•Manage playlists

Enter the music library, then touch the playlist.

- 1) if you want to play songs in the playlist, touch the name of the playlist.
- 2) if you want to delete the playlist, long press the playlist, then touch delete.

- 3) if you want to rearrange the song in the list of songs or remove a song, please long press the playlist, then touch the options menu editor.
- 4) to delete a playlist of songs, please long press the songs, and then touch to removed from the playlist.
- 5) if you want to rename playlists, please hold the playlist, then touch the options menu to rename. Enter the new playlist name, and then touch save.
- 6) if you want to set songs into a cell phone ringtone, touch menu and set as a cell phone ringtone. The song will be set to the default ringtone.

16. Calendar

Calendar program, main screen

When you enter the calendar program, a white color will display on the surface of the month. The current day will be highlighted and it will default to display the current week.

In the calendar interface, click the small arrow next to the year in the bottom right corner to display options.

There are four kinds of display mode:

- 1) On the calendar screen, the background on the month will be white, highlight to select a certain day.
- 2) The week screen shows the schedule for the week, slide the screen to turn the page to the next week.
- 3) On the screen displaying the month schedule, slide up and down to flip to another month.
- 4) The schedule screen shows the schedule for a certain time space (click on the schedule to see the starting time ending time).

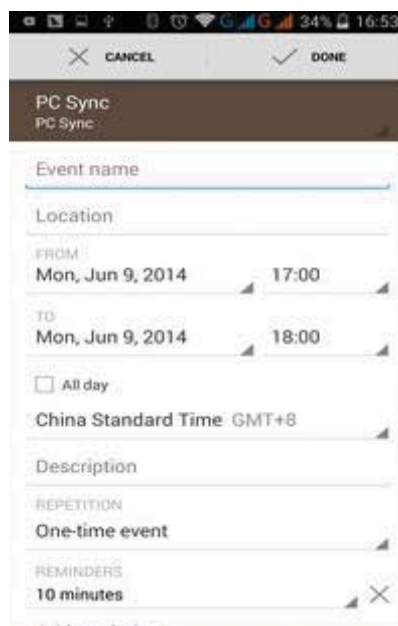
• New activities

- 1) click the MENU button > new activities.
- 2) in the event details box Enter the name.

Note: If there is a special occasion, such as a birthday or a whole day's activity, set the event as an all day activity. For an event that is in a certain period of time, select the start time and end time.

- 3) enter the activity location, illustration, invited object, repeat, reminder of time.
- 4) click on to complete then return to the calendar.

Note: all the titles of the events are displayed in the calendar. The calendar will not show the event time.



17. FM Radio

FM Radio

Through this program, you may listen to FM radio on the device. FM radio uses the wired headset as an antenna to receive signals. Before opening this program, connect the original equipment-headphones. When listening, you can switch manually to speaker mode or back to the headphones.

- Open FM radio



Touch this label **FM Radio** to open the application of FM radio.

- 1) Click on "search" to automatically scan the FM channel. The channel list interface will list all channels
- 2) Click "FM recording", the radio station that you are currently listening to can be recorded. The tape recording will be saved to an FM recording default file. The file name will be set to a default file name, but can be changed later.
- 3) Click "exit" to close FM radio. You cannot listen to in the background.
- 4) You must insert the cable headphones as antenna, but you can click on the speaker button to put the FM radio on speaker.
- 5) Click on star icon to add the channel to the channel list.

- Listen to FM radio background

Click the return key to move the radio program to the background. You can still continue to listen to the radio and also carry out any other program.



18. Settings

Your service provider may default some device settings, so you may not be able to change these settings.

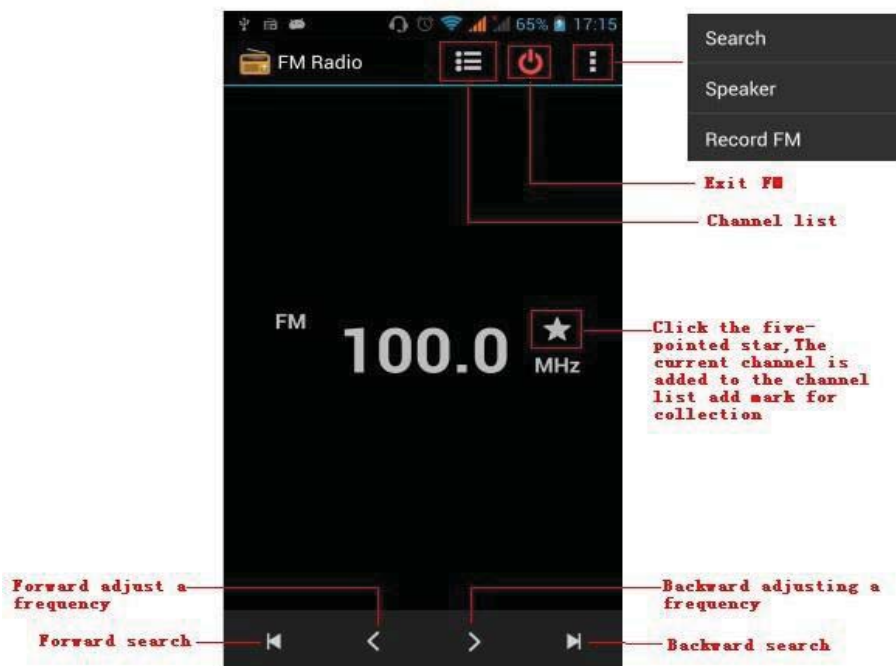
Wireless & internet

•Wi-Fi

1) Flight mode Touch to open or close.

2) Wi-Fi and Wi-Fi settings Touch Wi-Fi  to open . Turn on Wi-Fi to search for available networks automatically. Networks without password can be used directly, others need to enter the password first.

Notice: If you turn on Wi-Fi then the flight mode, Wi-Fi will close automatically. If you turn on flight mode first, then connect Wi-Fi, it can be used normally.



•Bluetooth

Switch on the Bluetooth switch to turn on bluetooth and automatically search nearby equipment with that have bluetooth turned on.

•SIM cards

- Touch to choose the SIM card or stop using a SIM card
- With the default SIM card you can choose voice call, information, and choose which SIM CARD to use data connection.

Data usage

1. On Data usage you can set up mobile data traffic limit. If you exceed your limit, your data services will stop.

•More

Wireless & networks

- Airplane mode
- Default SMS app
- VPN
- Tethering&portable hotspot

e. Cellular networks

Device

• Display



- | | |
|--------------------------|---|
| a. Brightness level | Adjust the screen brightness |
| b. Adjustive brightness | Brightness will adjust according to the light source |
| c. wallpaper | In the wallpaper gallery you can set the mobile phone wallpaper |
| d.Sleep | Adjust the delay before the screen automatically locks. |
| e.Font size | Set the font size of the system |
| f.When device is rotated | Rotate the content inside |

• Sound & notification



This option lets you set the phone's tone when receiving calls or notification. Including: Vibration, volume, ring tones, ring tones notification and feedback (Button operation tone, select Sound, screen lock tone, touch) to adapt every environment.

- 1) Select "Standard / Mute / Conference / Outdoor", Touch the spot on the right. When is turns green, the mode will be selected.
- 2) Volume: Manually slide the volume for the ringtone and alarm clock settings.
- 3) call: voice phone ring, video phone ring
- 4) notice: default notification sound
- 5) sound improvement: View the headphones sound or boost the speaker volume
- 6) Notification and interference

• Storage



- a. Can view the SD card and cell phone memory usage.
- b. Can Unmount SD card or Erase SD card.
- c. Can choose the default memory.

• Battery



View the current battery level and see the power used by each application.

• Apps



- a. Manage applications and delete installed applications.
- b. In the running services, click on the 'stop' running services to remove a service from the list.

Personal

• Location



- 1) Use wireless to find locations in the application Google Maps.
Touch it to open or close
- 2) When using the GPS satellite positioning, set accuracy to street level(cancel it to save battery).
Touch it to open or close
- 3) GPS EPO assistance. Use GPS assistance data(EPO)to speed up GPS positioning
- 4) A-GPS. Use auxiliary data to accelerate the process of GPS positioning.

When you open it, it will remind you “it produce GPRS flows when using A—GPS” .



• Security

- 1) Set up screen locks by using images, PIN, or password to lock the screen.
 - a. Touch “images.” The first time you do this there will be a simple unlock instructions: Click “next step” to continue the step then “make the unlocking image” .
 - b. Touch PIN. Enter PIN numbers to unlock the screen.
 - c. Touch password. Set password to unlock the screen.
 - d. Touch “no”. Stop this application.

- 2) Set up SIM card lock. Enter 4-8 PIN numbers to set the lock of SIM.

SIM card PIN (Personal Identification Number) is to prevent unauthorized use of SIM cards. The PIN code is provided with SIM. The service provider gives the initial value.

To change a blocked PIN code, you need to open the "SIM Lock ", then go to Change Password screen. The phone will automatically prompt you to enter the old PIN code and ask to enter a new PIN code twice. Lastly the phone will prompt that code was changed successfully. If you enter the wrong PIN three times, the SIM card PIN codes will be automatically locked. PUK codes are usually supplied with SIM card. If not, you should go to the service provider for the codes.

If you enter the PUK code 10 incorrectly, the SIM card will be permanently locked.

- 3) Password visible Password visible when enter it
 - 4) Select device administration Add or delete device manager.
 - 5) Use security credentials Allow application to access security credentials or other credentials.
 - 6) Install from SD card Install the encrypted certificate from SD card.
 - 7) Set password Set or change Certificate store password
 - 8) Clear storage Clear all the contents of the certificate store and reset their passwords.
-
- a.Unknown sources Allow to install non-electronic market applications
 - b. Manage applications Manage and delete the installed applications.
 - c.Running services Touch any of the services listed, a message will pop up asking if you want 'to stop the service?' Touch the 'Stop' button. The service is stopped and will disappear from the "running services" list.
 - d.Storage use You can view the programs downloaded, all, on sd card, or running and how much memory space they occupy.
 - e.Battery use You can see the power used when the phone is in Stand by, Phone idle, Display and Browser.
 - f.Development a. USB debug: USB debug only applies in the develop process. This function allows you to copy data in computer and mobile devices.



• Accounts

Add account

- a. Corporate
- b. IMAP
- c. Google
- d. Personal(IMAP)
- e. Personal(PoP3)
- f. POP3



• Languages and input

- 1) Selecting Language District Includes all the languages available on the phone. You can add a total of 12

kinds.

- 2) Custom Dictionary Add words to custom dictionary or delete.
- 3) Keyboard Settings Vibrates when buttons are pressed, Plays sounds when buttons are pressed, Capitalizes automatically, Speech Input(by microphone on the keyboard), Inputting words(speech can be altered by sliding finger on space key), Displaying tips(activate predictive function when you input words); Auto-Text(Automatically input certain words when press space key or specified keys)
- 4) Input method you can select Android keyboard or google input method.

• Backup & reset



- 1) Backup data, application data, WLAN password and other Settings backup to Google's servers
- 2) Resetting to Factory Settings will clear all data stored on the phone.

System

• Date and Time



- 1) Automation Use date and time provided by Network.
- 2) Setting Date Touch "+" and "-" to set date.
- 3) Selecting Time Zone Select Time Zone according to where you are. For China please select "GMT+08:00, China Standard Time".
- 4) Setting Time Touch "+" and "-" to set time.
- 5) Use 24 Hour Time Format ON/OFF
- 6) Select Date Format There are 3 kinds of formats you can choose from: Month-Day-Year, Day-Month-Year and Year-Month-Day. Year-Month-Day is the default setting.

• Schedule power on/off



You can set time of boot or shutdown by touching it. You may also select to repeat it or a certain day during a week.

• Accessibility



- 1) Large text
- 2) Power button ends call: During a phone call, pressing the "power" will end the call and not shut down the screen
- 3) Auto-rotate screen
- 4) Speak passwords
- 5) Touch & hold delay
- 6) Install web scripts
- 7) Quick boot

• Printing




- a. Can search a printer for printing

• Developer options



- b. USB Debugging: USB debugging only for development and USB disk.
- c. Stay awake: Screen will never sleep while charging.
- d. Allow mock locations
- e. Desktop backup password
- f. Strict mode enabled
- g. Pointer location
- h. Show touches
- i. Show screen updates

- j. Show CPU usage
- k. Force GPU rendering
- l. Window animation scale:
- m. Transition animation scale
- n. Don't keep activities
- o. Background process limit
- p. Show all APRs
- About phone 

You can check the information on status bar and remaining power.

19. Notices for the use of phone

Your phone is a product of superior design and craftsmanship and should be treated with care. The following suggestions can help you comply with the terms of repair kits, to extend the life of mobile phone.

- 1) Place the mobile phone and their parts and components out of reach of small children.
- 1) Keep the phone dry, rain, humidity and all types of liquids which contain minerals will corrode electronic circuits.
- 2) Don't touch the phone with wet hands when charging, it will cause electric shock or damage the phone.
- 3) Avoid place the device in high temperature environment. Temperatures will shorten the life of electronic devices, damage batteries, and warp or melt certain plastics.
- 4) Avoid place the device in too low temperature environment. When the temperature rises, the phone will produce water vapor that may damage electronic circuit.
- 5) Avoid place the phone in dusty, dirty places, otherwise parts may be damaged.
- 6) To avoid the phone in a lit cigarette, near open flame or any heat source.
- 7) Do not open the device, non-professional approach will do damage to the phone.
- 8) Do not throw it from height, knock or shake the phone, rough handling can damage internal circuit boards.
- 9) Do not paint the phone, because the paint will block headphones, microphones or other removable parts, and lead it not work.
- 10) Use clean, soft, dry cloth to clean the camera, light sensor lenses. Prohibit the use of harmful chemicals and cleaning agents, cleaning fluids to clean the phone
- 11) If mobile phone, battery, charger, or mobile phone accessories are defective, send to the nearest qualified service center for inspection.
- 12) If necessary, Service Centre staff will assist you and will arrange for phone repairs.

20. FCC Caution

- Labelling requirements.

This device complies with part 15 of the FCC Rules. Operation is subject to the following two conditions: (1) This device may not cause harmful interference, and (2) this device must accept any interference received, including interference that may cause undesired operation.

- Information to user.

Any Changes or modifications not expressly approved by the party responsible for compliance could void the user's authority to operate the equipment.

- Information to the user.

Note: This equipment has been tested and found to comply with the limits for a Class B digital device, pursuant to part 15 of the FCC Rules. These limits are designed to provide reasonable protection against harmful interference in a residential installation. This equipment generates uses and can radiate radio frequency energy and, if not installed and used in accordance with the instructions, may cause harmful interference to radio communications. However, there is no guarantee that interference will not occur in a particular installation. If this equipment does cause harmful interference to radio or television reception, which can be determined by turning the equipment off and on, the user is encouraged to try to correct the interference by one or more of the following measures:

- Reorient or relocate the receiving antenna.
- Increase the separation between the equipment and receiver.
- Connect the equipment into an outlet on a circuit different from that to which the receiver is connected.
- Consult the dealer or an experienced radio/TV technician for help.

21 Specific Absorption Rate (SAR) information:

This Automotive Diagnosis Computer meets the government's requirements for exposure to radio waves. The guidelines are based on standards that were developed by independent scientific organizations through periodic and thorough evaluation of scientific studies. The standards include a substantial safety margin designed to assure the safety of all persons regardless of age or health.

FCC RF Exposure Information and Statement The SAR limit of USA (FCC) is 1.6 W/kg averaged over one gram of tissue. Device types: SL4502 (FCC ID: WA6SL4502) has also been tested against this SAR limit. The highest SAR value reported under this standard during product certification for use at the ear is 0.67W/kg and when properly worn on the body is 0.89W/kg. This device was tested for typical body-worn operations with the back of the handset kept 1cm from the body. To maintain compliance with FCC RF exposure requirements, use accessories that maintain a 1.0cm separation distance between the user's body and the back of the handset. The use of belt clips, holsters and similar accessories should not contain metallic components in its assembly. The use of accessories that do not satisfy these requirements may not comply with FCC RF exposure requirements, and should be avoided.

22 Body-worn Operation

This device was tested for typical body-worn operations. To comply with RF exposure requirements, a minimum

separation distance of 1.0 cm must be maintained between the user's body and the handset, including the antenna. Third-party belt-clips, holsters, and similar accessories used by this device should not contain any metallic components. Body-worn accessories that do not meet these requirements may not comply with RF exposure requirements and should be avoided. Use only the supplied or an approved antenna.