

Contents

CONTENTS.....	1
THE ANDROID ADVANTAGE.....	3
READ ME FIRST	3
DISCLAIMER.....	3
OVERVIEW.....	5
INSERT SIM CARD AND MEMORY CARD.....	5
RESET YOUR PHONE VIA POWER KEY.....	8
HANDSET KEYS.....	9
CHARGING THE BATTERY	10
SUPER POWER MODE.....	11
BATTERY SAVER MODE.....	12
BASIC PHONE FEATURES.....	13
SIGNING IN WITH YOUR GOOGLE ACCOUNT	13
HOME SCREEN	14
APP LAUNCHER.....	15
NOTIFICATIONS.....	16
RECENT APPS.....	20
AUTO-ROTATION	20
PHONE LOCKING AND UNLOCKING TECHNIQUES.....	21
USE GOOGLE SEARCH	24
USING THE TOUCH SCREEN.....	25
TAP AND HOLD.....	25
DRAG AN ITEM.....	25
SCROLL.....	25
SWIPE.....	26
USING THE PINCH ZOOM.....	26

DOUBLE-TAP	26
USING THE ONSCREEN KEYBOARD.....	27
CALLING AND MESSAGING.....	28
MAKE A CALL	28
CONTACTS.....	29
AIRPLANE MODE	30
SEND MESSAGE.....	30
MULTIMEDIA	31
CAMERA.....	31
GALLERY.....	31
MUSIC PLAYER.....	32
FM RADIO.....	33
VIDEO PLAYER.....	34
.....	34
SETTINGS, NETWORKS, AND APPS.....	34
CONNECT TO THE INTERNET.....	34
TETHERING & PORTABILITY	35
PAIR WITH BLUETOOTH DEVICES	36
CONFIGURING E-MAIL	37
GOOGLE MAPS.....	37
DRIVE.....	38
MANAGE APPS.....	38
SAFETY PRECAUTIONS.....	39
TAKING CARE OF YOUR DEVICE.....	40
RECYCLE YOUR PHONE.....	41
COPYRIGHT	41

The Android Advantage

Micromax E471 comes with Android Lollipop 5.0 that introduces a new design in terms of interface, apps, notifications, and optimization. Lollipop 5.0 offers enhanced battery life, and better security features to make your mobile experience pleasant and secure.

Read Me First

- Please read all safety precautions and this manual carefully before using your device to ensure safe and proper use.
- The descriptions in this manual are based on the default settings of your device.
- Available features and additional services may vary by device, software, or service provider.
- Apps and their functions may vary based on the country, region, software or hardware specifications. Micromax is not liable for performance issues caused by third-party apps.

Disclaimer

- The colors, specifications, functions and graphics shown/mentioned in the user manual may differ from the actual product. In such a case, the latter shall govern. Images shown are for representation purpose only. Specifications are subject to change without prior notice. Micromax keeps the right to modify the content in this user guide without prior notice.
- Upon first use of your device, your device will send information related to your mobile, IMEI numbers, location

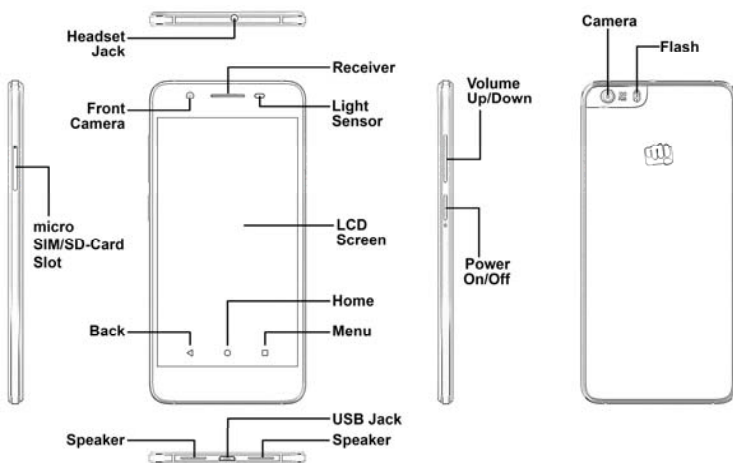
details and other software details through SMS* automatically. This information may be used as further specified in Micromax privacy policy**.

- Talk and standby times are affected by network preferences, type of SIM cards, connected accessories and individual usage patterns. Services and some features may be dependent on the network, service/content providers, SIM cards, compatibility of the devices used and the content formats supported.
- Other product logos and company names mentioned herein may be trademarks or trade names of their respective owners.

*Operator tariff shall be applicable for SMS.

**Micromax privacy policy is available at www.micromaxinfo.com.


Overview



Insert SIM Card and Memory Card

Your device is a dual-SIM phone that supports a Micro SIM, a Nano SIM and one Memory card. Switch off your phone before SIM insertion/removal and insert the SIM card in the SIM slots correctly.

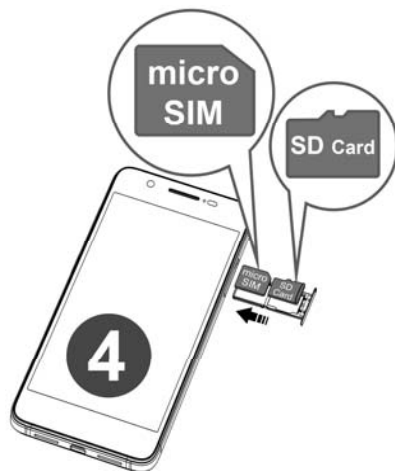
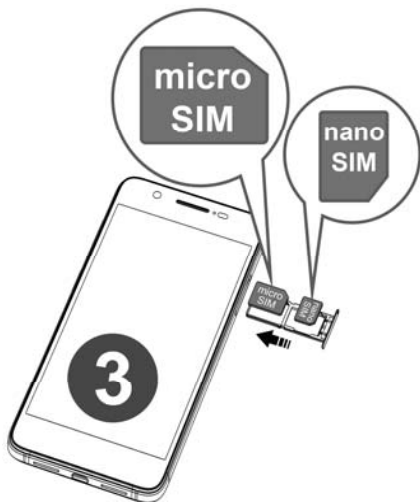
To insert the SIM card:

1. Switch off your phone and press the pointed tip of the metallic gear  (included in the packaging) into the SIM tray hole to eject the SIM tray as shown in the following images:



2. Place the SIM card(s) and SD card correctly in the SIM tray, as

shown in the following images:



3. Press the SIM tray back into the slot.



You can insert both the Nano SIM and the SD card via the same tray. The slots for both are same within the same tray (refer figure above).



The handset supports one Micro SIM card and a Nano SIM card. Using incorrect sized SIM cards may damage your handset.



Please keep the SIM card out of the reach of children.



The SIM card is vulnerable to damage due to scratching or bending. Therefore, be careful when using, inserting or removing the cards.



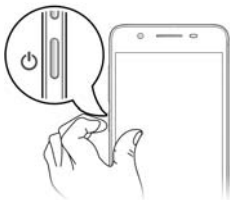
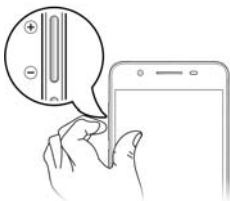



Use only compatible memory cards with this device. Incompatible memory cards may damage the device and corrupt the data stored in the card.

Reset your phone via Power Key

You can reboot the device if it hangs due to some reason. To do this, press the Power button for at least 10 seconds and your phone will reboot.

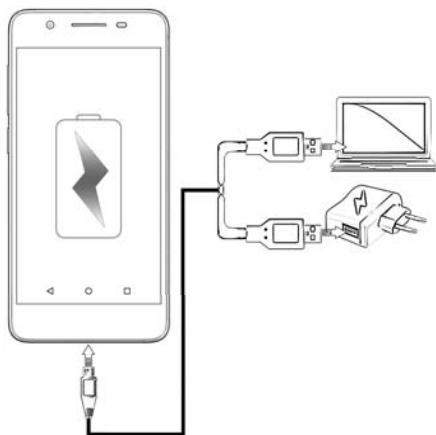
This is different from the Reset option in Settings wherein your phone is restored to the original settings when you purchased the phone.

Handset Keys

Keys	Functions
	<ul style="list-style-type: none">• Long press to switch on or switch off the phone.• Press once to turn off the screen or to wake up the screen.• Press for 2 seconds to view quick options to turn off the phone, reboot the device, or switch to airplane mode.
	<ul style="list-style-type: none">• Adjust the sound profiles and phone volume from the volume keys available on the left side of the device.
	<ul style="list-style-type: none">• Opens the list of most recently used apps.
	<ul style="list-style-type: none">• Opens the Home screen.• Swipe up to open Google Now.
	<ul style="list-style-type: none">• Opens the previous screen you were working on.• If the onscreen keyboard is open, closes the keyboard.

Charging the Battery

Before using the device for the first time, you must charge the battery. You can charge the device with a travel adapter or connecting the device to a PC with a USB cable.



Use only Micromax chargers and cables. Other chargers or cables can cause the battery to explode or damage your device. This may invalidate your phone warranty.



You can also use a compatible USB charger to charge your battery.




We suggest you charge the battery for 4 hours continuously for the first time.


Super Power Mode

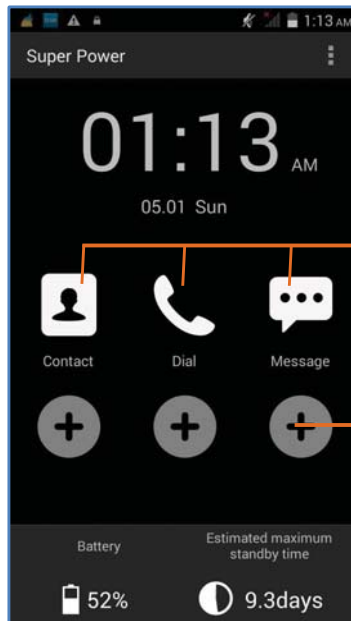
Your AQ5000 comes with a Super Power Mode that lets you save the battery power when your device reaches a certain battery level threshold.

- Super Power Mode helps you save power significantly by changing the screen to black-and-white, and running only the essential apps while turning off all the non-essential apps, background data and reducing the screen's brightness.
- Super Power Mode restricts the phone's functions to a handful of apps on a special screen (including calls, messages and contacts).
- You can add more apps to the Super Power screen that would be active and available for use when your device is in the Super Power mode.

You can enable/disable the Super Power mode by dragging down the Quick Settings panel and tapping  icon.

Or,

Go to  → Super Power to enable the Super Power mode.



Active apps in the Super Power Mode

Tap to add apps to the Super Power screen

Battery Saver Mode


Lollipop 5.0 provides you with a Battery Saver Mode that lets you save battery power when your device battery is running low and you cannot charge your phone.

- Battery Saver Mode helps you save power significantly by changing the status bar and navigation bar at the top of the screen to orange, and running only the essential apps while turning off the background data.
- Battery Saver Mode restricts the background app refreshing, for example, periodic updates for apps like Gmail, Twitter, Facebook, etc. and limits the phone's performance to extend

the battery life.

- Battery Saver Mode automatically switches off when the phone is connected to a charger.

You can enable/disable the Battery Saver mode by performing the following steps:

- Go to Settings and navigate to the Battery section under the heading Device.
- You can also get here by tapping the battery percentage reading at the top of the Quick Settings notification bar.
- Tap  and then select Battery saver.

You can also set the battery saver to turn on automatically at 5% or 15% battery.

Basic Phone Features



Signing in with your Google Account

Your Google Account lets you take full advantage of apps and services offered by Google Android market. Configure your Google account on this handset to get access to your Gmail, Google Play Store, Google Maps, and much more.

The phone will prompt you to sign in to your Google Account when you turn on your handset for the first time.



Network connection is required for the Google account setup step to appear.

To sign in to your Google Account at a later time, go to  →  → Accounts → Add account → Google. Follow the registration steps to successfully configure your mail account on the device.



If you do not have a Google Account, you can easily create one.



You may also add other accounts associated with individual apps.

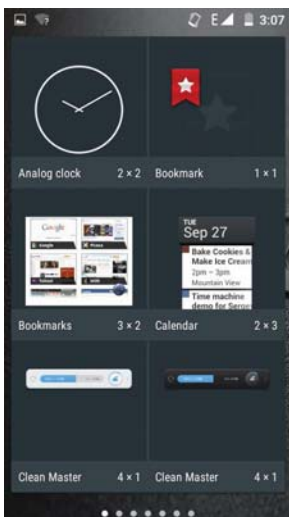
Home Screen

The home screen provides you with access to all the functions and apps in your phone.

You can personalize your home screen with shortcuts, widgets, wallpapers and other items. To view quick options to change wallpaper, or add widgets, long tap on the home screen. You can add extensions to the home screen by placing widgets or app shortcuts on the extended home screen. Your E471 will show only those extended home screens which have some shortcut/widget placed on them. Swipe left or right on the home screen to view the next extended home screen.

In the bottom pane, there will be five launcher icons for you to open different sections in the phone. Except the app launcher in the middle of the pane, you can rearrange and manage the other four icons. Tap and hold to select a launcher icon and then you can rearrange, change, or remove them with ease.

Widgets



Widgets is an application which gives fast access to a set of apps in your phone.


Widgets allow you to place app shortcuts on your home screen and access them directly. Many of these apps provide live content such as news and clock.

Long tap on the home screen to view all available widgets by tapping WIDGETS.

App Launcher

App launcher or App menu is available right in the middle of the home screen bottom pane.



Tap  to view all inbuilt and installed apps. In the app menu, tap and hold any app to take it to the home screen; release the hold to place at any desired location on the home screen.

Notifications

Notification icons inform you of new messages and events as and when they appear in the device.

When you receive a notification, its icon appears in the status bar, along with a brief summary. You may clear each notification separately by swiping it towards left or right.

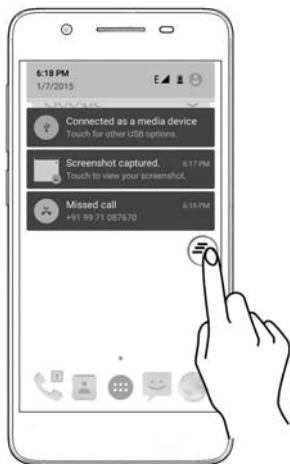
Open Notification panel



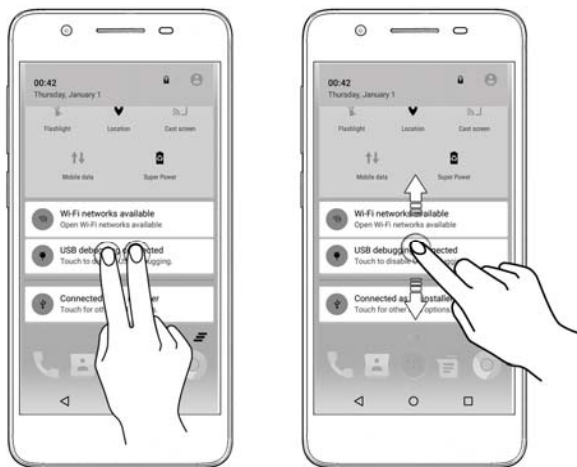
Close Notification panel

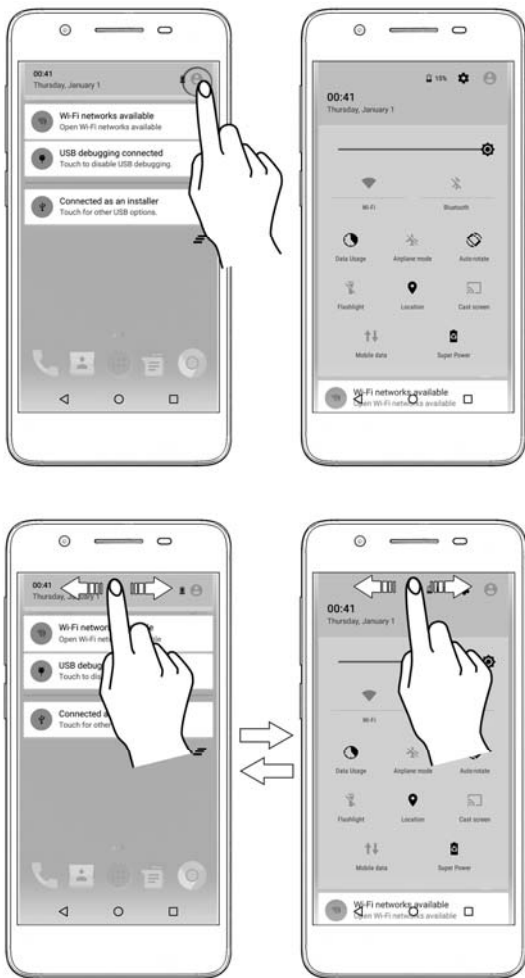


Clear all Notifications



Open Quick Settings






Quick Settings allow access to basic phone features such as Airplane mode, Wi-Fi, Brightness, and many more.

Android Lollipop has enhanced the way you interact with notifications entirely.

Now, when you receive a call or a message, you are no longer interrupted by a new screen suddenly popping up in place of the screen you were working on; now it appears as a heads-up notification (a banner) at the top of the screen with the option to answer/ignore a call or read an unread message.



Recent Apps

Tap the  key on the home screen to view the list of recent apps. You can easily remove items from the list to free some memory and make your phone work faster.

There are two ways to remove items from the list.



Drag an item towards left or right.



Tap the close button to remove an app.

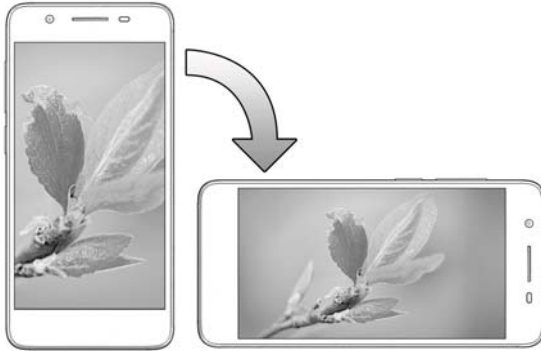
Auto-Rotation

Your phone has gravity sensor to detect its orientation and adjust the display (auto-rotate) based on the motion. To enable/disable the auto-rotate feature:

- Open Quick Settings and select Auto-rotate.

- You can also enable/disable the auto-rotate feature from

→  → Display → When device is rotated

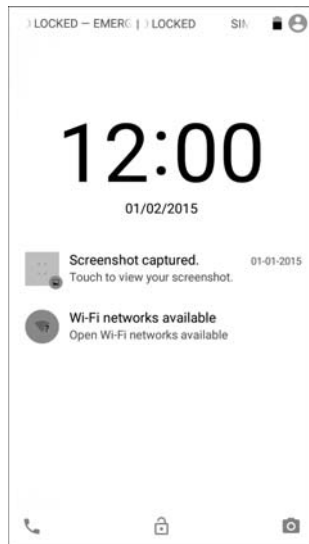


Phone Locking and Unlocking Techniques

You can unlock your phone using a variety of methods like Pattern Unlock, PIN Unlock or Password Unlock.



Slide unlock will be the default unlocking method in the phone. To unlock the screen:

1. Press the power key to wake up the phone.
2. Hold and drag the unlock icon upwards.



Android Lollipop 5.0 has made the lock screen more interactive and updated with features that range from personal unlocking (which allows trusted devices like a smartwatch to pair with your phone so you can bypass any lock screen security that is set up if you're wearing a trusted device) to notifications accessible from the lock screen.

In addition to the unlock icon and the camera icon, Lollipop also adds the dialer icon to the lock screen.

To set other unlocking techniques, go to  →  → Security → Screen lock

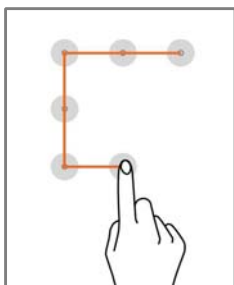
PIN



You may enter a PIN and set it as your screen unlocking password.

Enter your PIN to unlock your phone!

Pattern



You can set your own pattern by connecting the dots to prevent your phone from unauthorized access.

Set and draw your desired pattern!

Password



You may enter any desired password and set it as your screen unlocking password.

Enter your password to unlock!



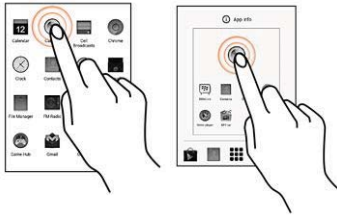
It is important to remember your screen lock password/pattern/PIN.

Use Google Search

Search for anything on your phone or on the Internet using the Google search bar at the top of your home screen. Type your search words into the box or press the microphone icon and use your voice to speak your search query. From the search box, you can also use voice commands to perform various actions on your phone. In addition to the search box on your home screen, Google Search is available in the apps menu, too.

Using the Touch Screen

Tap and Hold



Tap and hold an item to view the list of actions based on the selected item and condition. Also, you can move an item from the Apps screen to the home screen using this method.

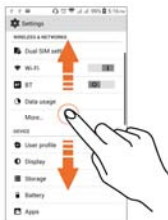
Drag an Item

Tap and hold an item and move your finger on the screen until you reach the target position. The item follows your finger.

You can generally drag items from one location to another on the home screen. Also, you can delete items from the home screen by holding the item and dragging it to the Remove label that becomes available only when you hold the item on the Home screen.



Scroll

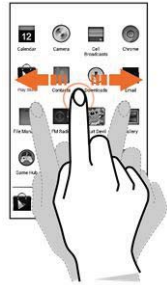


To scroll a list, slide your finger across the surface of the screen upwards or downwards (without dragging an item).

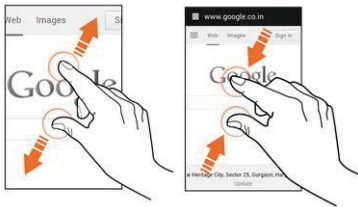
Swipe

Place a finger on the screen and steadily slide your finger in the desired direction.

For example, when you are viewing a picture, to view the next picture, swipe left.



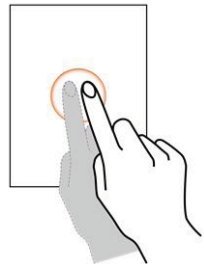
Using the Pinch Zoom



You can open any image or web page and then use your thumb and index finger to zoom the display through the pinch gesture.

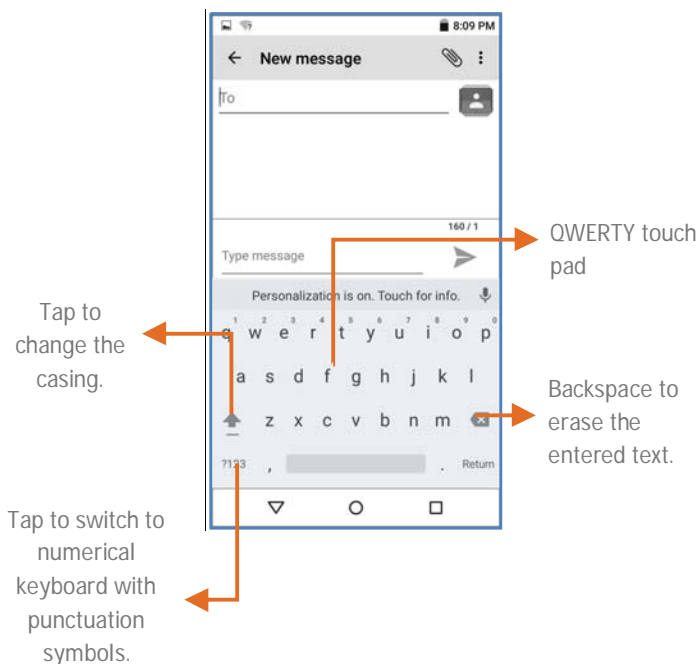
Double-tap

Tap quickly twice on a webpage, map, or other screen to zoom. For example, double-tap a section of a webpage in the browser to zoom that section.



Using the Onscreen Keyboard

Some apps display the keyboard by default. In others, you will be required to tap a text field, where you want to enter text, to open the keyboard.



After typing, tap ▾ key to close the keyboard.




Tap and hold the text field to open a menu and to cut/copy/paste text.


Calling and Messaging

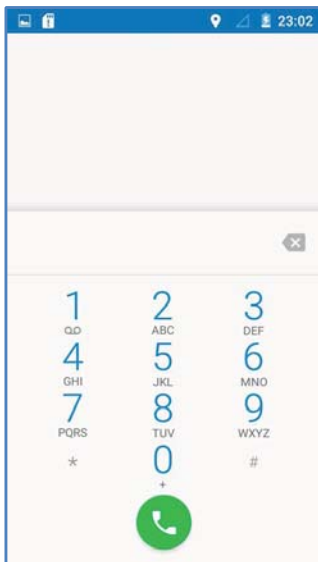
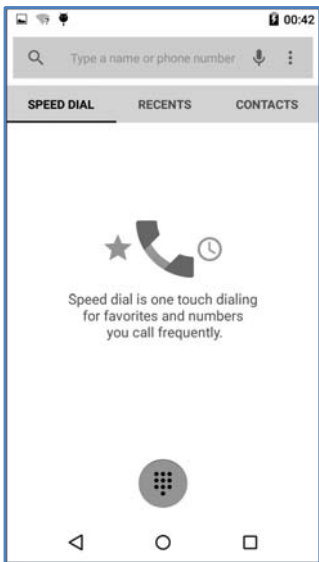
Make a Call

To make a call:

Tap  on the menu screen or the home screen to open the dial pad for making calls.

By default, the dialer will display a list of contacts on which calls have been made very often and the contacts which have been marked as favorites.

You can show/hide the dialer by tapping  or view the call history by selecting RECENTS.





Contacts

Go to  → 



Store, use, and synchronize contact details in your contact list. You can now create contact groups or mark contacts as favorites.

Use tabs or swipe through to view the list of contacts, and to add favorite contacts.

Tap  icon to search for your desired contacts, and to add new contacts, tap .

You can synchronize your contacts list with the accounts configured on this device.

To synchronize your contacts list:

- Tap the  key from the contacts screen and then tap Accounts.
- Select the account(s) with which contacts list is to be synchronized. To auto-sync contacts, tap  in the Accounts section and select Auto-sync data.

Your contacts synchronization will be complete in a few seconds.



To synchronize contacts, you need to have Internet connectivity. If your Sync does not proceed as expected, check whether data option is set to ON.

Airplane Mode

Some locations may require you to disable all the wireless features of your mobile. The Airplane Mode enables you to disable all incoming and outgoing calls, Wi-Fi, and Bluetooth connections.

To activate the airplane mode:






- Press and hold the Power button and then select Airplane mode.

Or

- Open Quick Settings and select Airplane mode.

Send Message

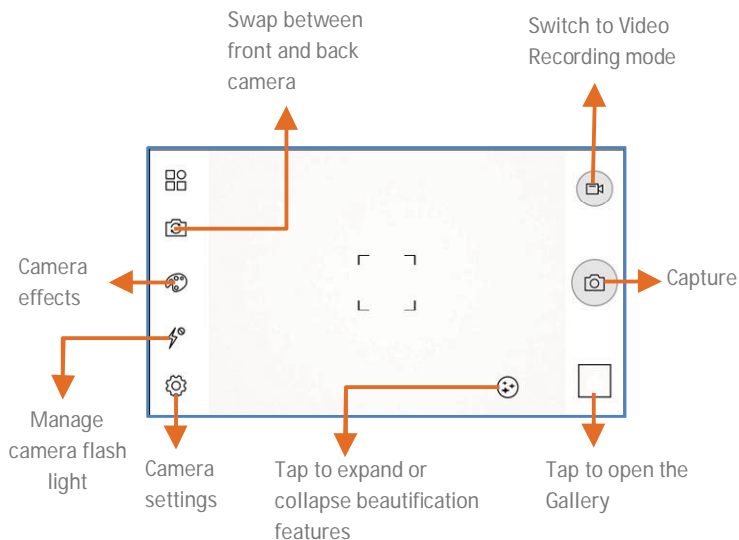
To send a message:

- Tap  on the menu screen or the home screen to go to the messaging section and then tap  to compose a message.
- Tap the  icon to view the types of files that can be attached and select the desired type of multimedia file.
- Tap to select the composition text box and enter your message body in it.
- Enter the contact name (if it exists) or enter the phone number. You can also tap the  icon to view and select contact(s) from the contact list.
- Tap  to send the multimedia message.

Multimedia

Camera

Go to  → 



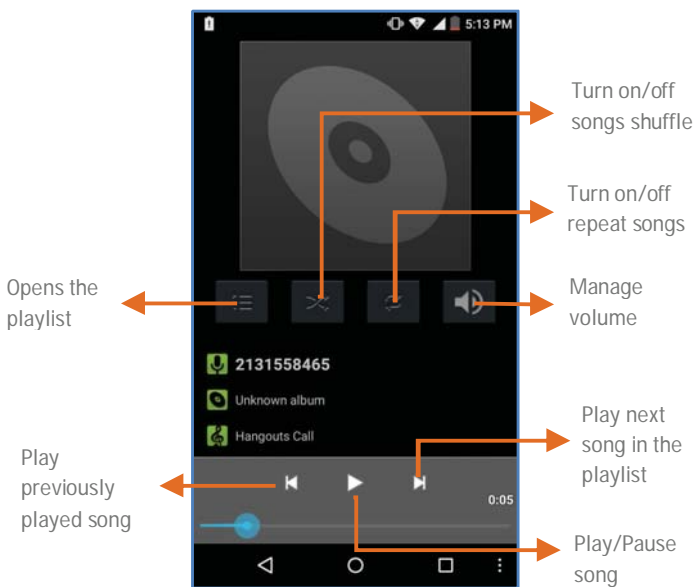
Gallery

Go to  → 

You can use the Gallery to view pictures, play videos and share files.
Tap an album to open and view its contents.

Music Player

Go to  → 



Press the up/down keys on the left side of the mobile phone to adjust the volume.



You can use an SD card to enhance the storage capacity for your multimedia files such as music, photos, emails,

and so on.

FM Radio

Go to  → 

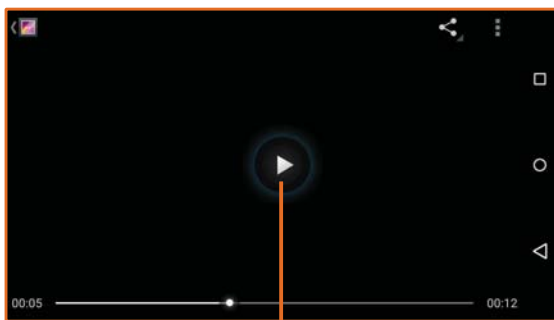
You can listen to your favorite FM channels using the inbuilt FM receiver of your phone. Before starting the FM, plug-in the headset as it works as antenna for the FM radio. Use the intuitive buttons and icons in the radio interface to enjoy the features of your inbuilt FM radio.



Press the up/down keys on the left side of the mobile phone to adjust the volume.

Video Player

Go to 





Play/Pause
video



Settings, Networks, and Apps

Your phone can connect to various networks and devices, including Internet, Wi-Fi, GPRS, Bluetooth, devices, such as headsets. You can also transfer files to/from your PC through the data cable.

Connect to the Internet

Go to  →  → SIM cards and select the SIM on which data connection is to be enabled.

You may also need to configure the access point name for the data connection to work.

Go to  →  → More → Mobile networks → Access Point Names and select the access point name from the list.



By default, the access point name gets configured once you insert the SIM, or your network provider sends the access point name settings via SMS. You may need to install these settings. If the access point names are not listed by default, please contact your network provider for the same.

Tethering & Portability

You can use your E471 as a modem and connect your PC or laptop to the Internet, when required. Start using your SIM data pack on your PC or Laptop now!

Go to  →  → More → Tethering & portable hotspot.

USB Tethering

- Connect your phone with your PC/Laptop via USB cable.
- Select the USB tethering option.
- Select your phone network as the network connection in your PC/laptop and get access to the Internet.

Bluetooth Tethering

- Pair your phone with the Bluetooth enabled PC/laptop via Bluetooth pairing option.
- Select the Bluetooth tethering option in your phone.
- On the paired PC/laptop, select the Bluetooth device (your phone) and choose to connect to the Internet.

Wi-Fi hotspot

- Turn on the Portable Wi-Fi hotspot option in your phone.
- On the other Wi-Fi enabled PC/laptop/handset, choose your phone as a Wi-Fi network to connect with it.
- View and configure Wi-Fi hotspot settings by tapping Set up Wi-Fi hotspot option.




Your mobile operator will charge you based on your GPRS data usage.

Pair With Bluetooth Devices

Go to  →  → Bluetooth



1. If Bluetooth is off, turn it on. Your phone scans and displays the Bluetooth devices in range.
2. Tap the ID of the other device in the list to pair with it.
3. You will be prompted to confirm passkey on both devices.
4. Tap Pair to confirm the passkey and pair the devices. On successful pairing, your phone connects to the device.



If the device you want to pair with is not in the list, make sure the Bluetooth on that device is turned on, then tap  and select Refresh to search again.

Configuring E-mail

You can check and reply to your emails from your E471 anywhere and anytime. Apart from the Gmail account, you can also configure other accounts on this device.

To set up an email account, go to  →  → Accounts → Add account, select the type of account you want to create and enter the required details to successfully configure your account on the device.

The server will check for online settings automatically and your account will be set up. If not, please check your Internet settings before proceeding.

Google Maps

Google Maps is an app from Google that gives you access to various map-related services. You can view your location on a map, search for different landmarks, find directions to locations, and even view Street View photos from around the world. The built-in navigation works with your GPS to give step-by-step route guidance while driving or walking. And you can even download maps to use offline when you don't have an Internet connection. For the best experience with Google Maps, configure the following settings:

- Enable location access from  →  → Location.

Go to  →  to start using Google Maps.



Internet connection is required for using Google Maps.
When you use the map, you use your Internet connection to transfer data to and from your phone.



The Google Maps app may not be available in every street, country or region.



Micromax does not guarantee the accuracy of any directional services.



Drive



Back up all your files like videos, images, PDFs, etc. using Google Drive™ so that you do not lose them. You can view your documents from any smartphone or computer and share them with others.

Tap on  to start using Drive.

Manage Apps

Your phone comes with a host of apps to make your life easier and more convenient. The Android phones offer users access to unlimited entertainment sources. You can download apps, games, movies, and books from the ever increasing Android market. New items get added almost daily to the market to give users a never ending fun experience.

To view and manage the list of all inbuilt, downloaded, and running apps, go to  →  → Apps.

To download apps, games, movies, and books from the Google Play Store, go to  →  to access the Google Play Store. View the details and download items, as desired.



Not all items are free of cost in the Google Play Store.



You need to have an Internet connection and be signed in to your Google Account to use the Google Play Store.

Safety Precautions



Switch off your device in any area with potential explosive atmosphere. Sparks arising out of radio frequency may cause fire or explosion. Therefore switch off your device at refueling stations, fuel depots, chemical plants or places where blasting operation is in progress. Remember to comply with legal requirements and local restrictions when using the phone.



Your Phone's radio waves may interfere with inadequately shielded medical devices. Consult a physician or manufacturer of the medical device to know whether they are adequately shielded from external Radio Frequency. Switch off your device when regulations require you to do so.



Always keep the phone and accessories out of reach of small children. Small parts such as the SIM card or micro SD card can be dismantled and swallowed by small children.



Do not place the phone near electromagnetic data carriers such as credit/Debit cards. Information stored on them could be lost.



Permanent damage to hearing may occur if you use earphones at high volume for prolonged periods. Set your volume to a safe level. If you experience discomfort in your ears, reduce the volume or discontinue the use of your earphones.



Manufacturers of medical devices recommend a minimum distance of 15.3 cm (6 inches) between a wireless device and an implanted medical device such as pacemaker or cardioverter defibrillator to avoid issues arising out of radio frequency interference.



The mains voltage (V) specified on the power supply unit must not be exceeded to prevent damage to the charging device. The power supply must be plugged into an easily accessible AC power socket when charging the battery.



The phone may cause interference in the vicinity of TV sets, radios and PCs.



Do not use the phone while driving. When you have to use the phone, please use the earpiece.

Please put the phone safely in the phone stand. Do not put it onto any passenger seat or any place from which it may fall down during collision or emergency braking.



Flight is influenced by interference caused by the phone. It is illegal to use a phone on the airplane. Please turn off your phone during a flight.



The phone must be repaired by Micromax authorized personnel only. Repairing this phone by yourself other than our authorized service agents/centers goes against the warranty rules.

Taking Care of your device

Your device is a product of superior design and craftsmanship and should be handled with care. The following suggestions will help you protect your phone.

- Keep the device dry. Precipitation, humidity, and all types of liquids or moisture can rust the electronic circuits. If your device gets wet, remove the battery, wipe it with a dry cloth and take it to an authorized service center.
- Do not store the device in high or cold temperature. Extreme temperatures can shorten the life of electronic devices and damage batteries.
- Do not use or store the device in dusty, dirty areas. Its moving parts and electronic components can get damaged.

- Do not attempt to open the device other than as instructed in this guide.
- Do not drop, knock, or shake the device. Rough handling can break internal circuit boards and fine mechanics.
- Do not use harsh chemicals, cleaning solvents, or strong detergents to clean the device. Only use a soft, clean, dry cloth to clean the surface of the device.
- Do not store your device near magnetic fields or allow your device to come in contact with magnetic fields for extended period of time.

Recycle your Phone



The WEEE logo (shown at the left) appears on the product (battery, handset, and charger) to indicate that this product must not be disposed off or dumped with your other household wastes. You are liable to dispose of all your electronic or electrical waste equipment by relocating over to the specified collection point for recycling of such hazardous waste.

Collection and proper recovery of your electronic waste equipments at the time of disposal will allow us to help preserve the environment. Recycling of the electronic waste equipment will ensure safety of human health and environment. For more information on best practices for disposal of electronic and electrical waste, please visit to our web site: www.micromaxinfo.com/weee.php.

Note: Micromax will not bear any responsibility for any noncompliance with the above mentioned guidelines or improper usage of the mobile phone.

Copyright

All rights reserved. Reproduction, transfer, distribution or storage of part or all of the contents in this document in any form without the prior written permission of Micromax is strictly prohibited.