

CONTENTS

THE ANDROID ADVANTAGE	3
READ ME FIRST	3
UNDERSTAND YOUR PHONE	4
INSERT SIM AND MEMORY CARD.....	5
TURNING YOUR PHONE ON/OFF.....	6
HANDSET KEYS	7
CHARGING THE BATTERY	8
GOOGLE ACCOUNT.....	8
HOME SCREEN	9
APPLICATION LAUNCHER.....	10
NOTIFICATIONS.....	10
AUTO-ROTATION	13
PHONE UNLOCKING TECHNIQUES	14
SMART LOCK.....	16
USE GOOGLE SEARCH	17
USING THE TOUCH SCREEN.....	17
TAP AND HOLD.....	17
DRAG AN ITEM	18
SCROLL.....	18
SWIPE.....	19
USING PINCH TO ZOOM.....	19
DOUBLE-TAP.....	20
USING THE ON-SCREEN KEYBOARD	20
RECENT APPLICATIONS	21
CALLING AND MESSAGING.....	22
MAKE A CALL	22
CONTACTS.....	22

AIRPLANE MODE	23
SEND MESSAGE.....	23
MULTIMEDIA	24
CAMERA.....	24
GALLERY.....	25
MUSIC PLAYER.....	25
FM RADIO.....	26
VIDEO PLAYER.....	27
.....	27
SETTINGS, NETWORKS, AND APPLICATIONS.....	27
CONNECT TO THE INTERNET.....	27
TETHERING & PORTABILITY.....	28
PAIR WITH BLUETOOTH DEVICES	29
CONFIGURING E-MAIL.....	30
GOOGLE MAPS.....	30
PLAY STORE.....	31
SAFETY PRECAUTIONS	32
TAKING CARE OF YOUR DEVICE.....	34
BATTERY RECOMMENDATIONS.....	34
RECYCLE YOUR PHONE	35
DISCLAIMER.....	35
COPYRIGHT	36

The Android Advantage

Micromax Q380 comes with Android 5.0 Lollipop, Google's latest Android offering which features the new material design, enhanced notifications, improved battery life, multiple user accounts, and many other new features.

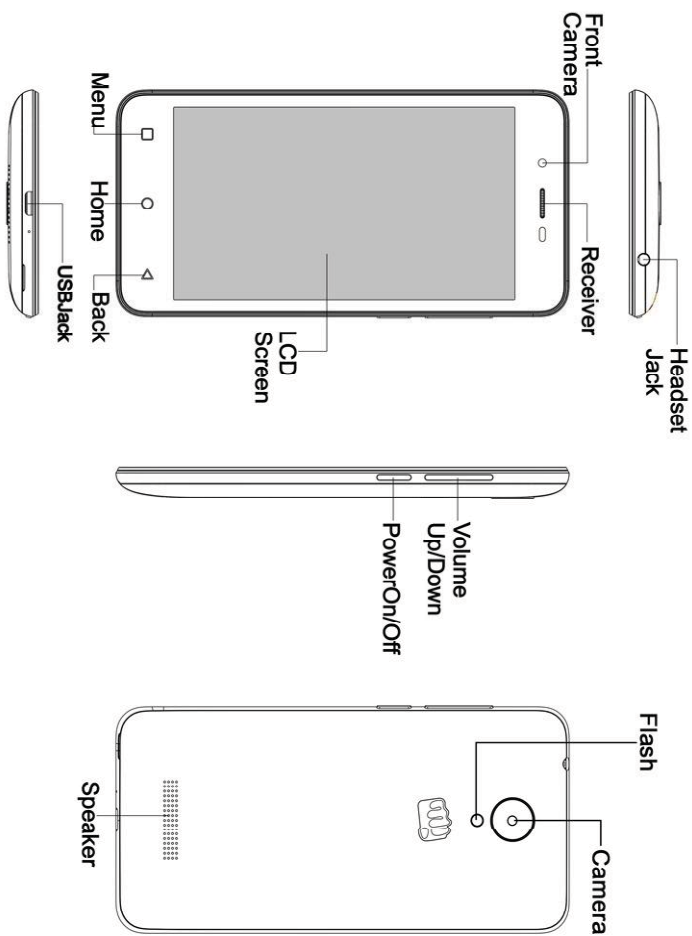
With its redesigned UI and optimized performance, Android 5.0 offers a faster, smoother and intuitive Android experience.

While you have some of the best Google apps like Maps, Chrome, Gmail, Drive, etc. built in your phone, you can also download millions of apps, games, movies, and books from the Play store.

Read Me First

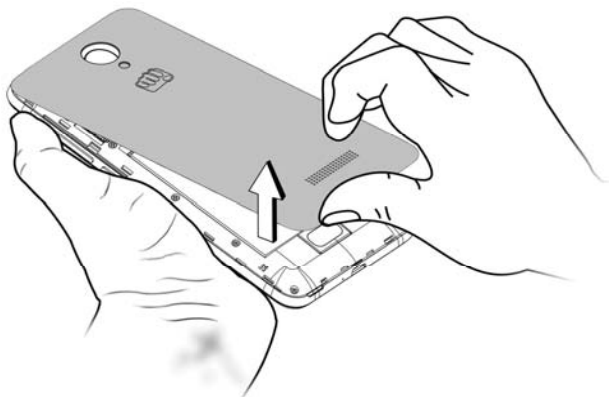
- Please read all safety precautions and this manual carefully before using your device to ensure safe and proper use.
- The descriptions in this manual are based on the default settings of your device.
- Available features and additional services may vary by device, software, or service provider.
- Applications and their functions may vary based on the country, region, software or hardware specifications. Micromax is not liable for performance issues caused by third-party applications.

Understand Your Phone

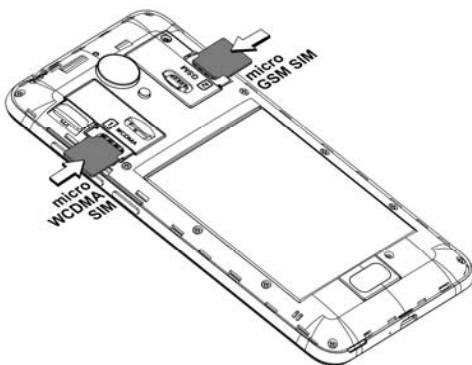


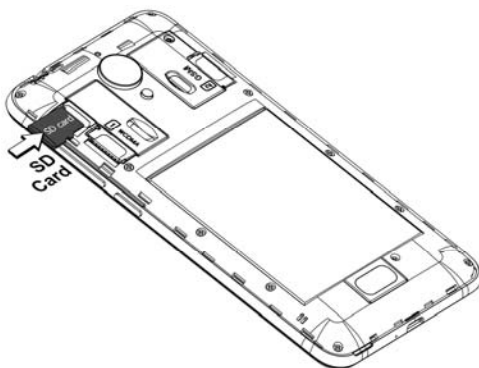
Insert SIM and Memory Card

1. Switch off your phone and remove the rear cover as shown:



2. Insert SIM and Memory card correctly in the card slot(s), as shown:





3. Place back the rear cover.



Please keep the SIM Card out of the reach of children.



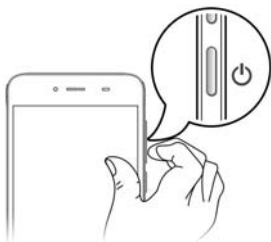
Be careful when inserting or removing the SIM card, as it is vulnerable to damage due to scratching or bending.



Use only compatible memory cards. Incompatible memory cards may damage the device and corrupt the data stored in the card.

Turning Your Phone On/Off

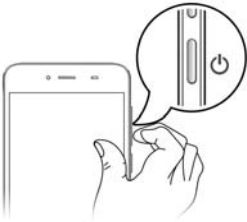
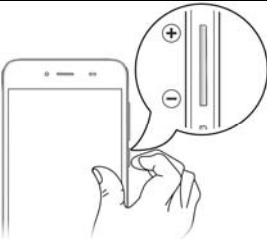
Press and hold the Power key for a few seconds and select Power off to switch on/off the phone.






To restart your phone, long press the Power key and select Reboot.

Handset Keys

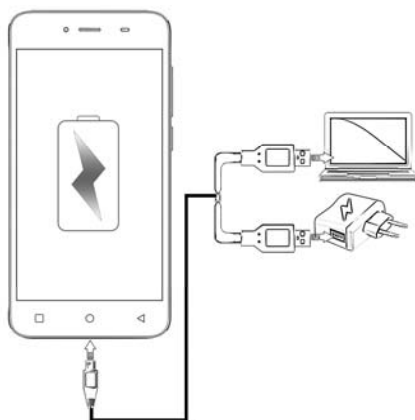
Keys	Functions
	<ul style="list-style-type: none">• Long press to switch on or switch off the phone.• Press once to turn off the screen or to wake up the screen.• Press for 2 seconds to view quick options to turn off or reboot the phone.
	<ul style="list-style-type: none">• Adjust the volume using the volume keys.

Keys	Functions
	<ul style="list-style-type: none">• Opens a menu with items that affect the current screen or application.• If tapped when on the home screen, opens options to personalize the home screen.• On long tap, opens the most recently used applications.

○	<ul style="list-style-type: none"> • Opens the Home screen. • On long tap, opens Google Now.
◀	<ul style="list-style-type: none"> • Opens the previous screen you were working on. • If the onscreen keyboard is open, closes the keyboard.

Charging the Battery

Before using the device for the first time, we recommend you to charge the battery for a minimum of 4 hours.



You can charge the device with a travel adapter or connecting the device to a PC via a USB cable.



Google Account

Your Google Account lets you take full advantage of applications and services offered by Google Play Store. Configure your Google account on this handset to get access to your Gmail, Google Play Store, Google Maps, and much more.

Google account setup will be prompted when you turn on your handset for the first time.



Network connection will be required for the Google account setup step to appear.

However, you may configure your Google account at any later stage from  →  → Accounts → Add account → Google. Follow the registration steps to successfully configure your mail account on the device.




If you do not have an existing Google account, you may create one from the account configuring step.



You may add various other accounts, depending on your applications.


Home Screen

You can personalize your home screen with shortcuts, widgets, wallpapers and other items.

- Tap the  key to view quick options, to change wallpaper, add widgets, or open settings section.
- Add extensions to the home screen by placing widgets or application shortcuts on the extended home screen. Swipe left or right on the home screen to view the next extended home screen.
- There are five launcher icons that allow for you to open different applications. Except the launcher in the middle, you can re-arrange or replace the other four icons.

Know More About Widgets...


Widgets allow placing application shortcuts on your home screen. You can place analog clock, your recent call logs, and other such sections

of your phone on the home page and access them directly! View all available widgets by tapping the  key and then tapping Widgets.

Application Launcher



Application launcher or Application menu is available in the middle of the bottom pane on the home screen.

Tap  to view all installed applications. In the application menu, tap and hold any application to take it to the home screen; release the hold to place at any desired location on the home screen.

Notifications

Notifications inform you of new messages and events as and when they appears on the device.

Open Notification panel



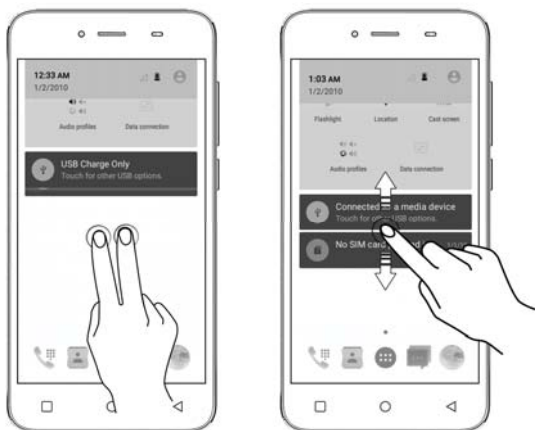
Close Notification panel



Clear all Notifications



Open Quick Settings



Quick Settings allow access to basic phone features such as Airplane Mode, Wi-Fi, Display Brightness, and many more.



Android Lollipop has enhanced the way you interact with notifications entirely.

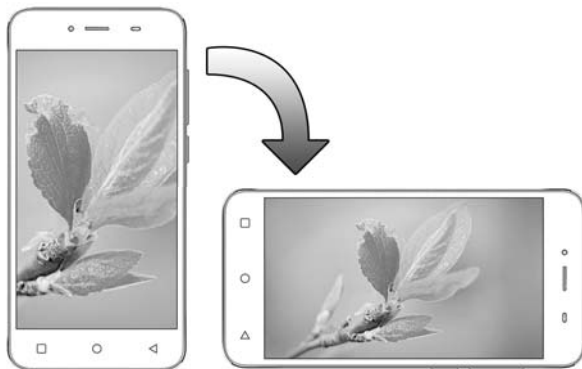


Now, when you receive a call or a message, you are no longer interrupted by a new screen suddenly popping up in place of the screen you were working on; now it appears as a heads-up notification (a banner) at the top of the screen with the option to answer/ignore a call or read an unread message.

Auto-Rotation

Your phone has gravity sensor to detect its orientation and adjust the display (auto-rotate) based on the motion. To enable/disable the auto-rotate feature:

- Open Quick Settings and select Auto-rotate / Portrait.
- You can also enable/disable the auto-rotate feature from 
→  → Display → When device is rotated





Phone Unlocking Techniques



You can unlock your phone using a variety of methods like Voice Unlock, Pattern Unlock, PIN Unlock or Password Unlock.

Swipe is the default unlocking method in the phone. To unlock the screen, just swipe up from the lock screen.

To set other unlocking techniques, go to  →  → Security → Screen Lock

PIN



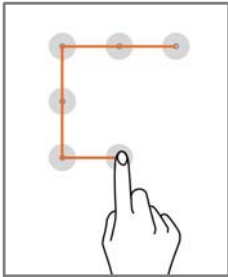
Enter your PIN to unlock your phone! You may set a PIN as your screen unlocking password.

Voice



Allows you to provide your voice as the screen unlocking password! You need to speak something for the phone to recognize your voice and unlock the screen.

Pattern



Draw your pattern to unlock! You can set your own pattern by connecting the dots to prevent your phone from unauthorized access.



Password



Enter your password to unlock! You may set your desired password as your screen unlocking password.

Smart Lock

Smart Lock allows you to bypass PIN or Password, and unlock your device if it is at a trusted place, connected to a trusted device, or when your face is set as the screen unlocking password.

To enable Smart Lock, go to  →  → Security → Smart Lock Trusted Device

You can pair a Bluetooth enabled accessory, like a smartwatch, headset, etc. to your phone, and whenever the accessory and phone are connected, you won't need to enter the PIN / Password to unlock your phone.

Trusted Place

You can set certain locations, wherein you won't need to enter your PIN / Password as long as the device is within that range.

Trusted Face

Trusted face allows you to set your face as the screen unlocking password. When you turn on the screen, camera scans your face, and once it gets a match, you can unlock your device. If somehow the camera fails to get a match, you can still unlock your device by entering your PIN / Password.



You need to set up a screen lock to use Smart Lock.



Turn on the GPS to unlock using Trusted Place.

Use Google Search

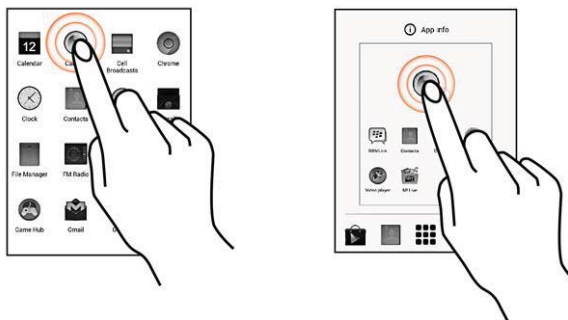
Search for anything in your phone or on the Internet using Google Search by simply typing the search keywords. Google Search also supports voice recognition, allowing you to speak to search, and use voice commands to access various sections in your handset.

Google Search is available on the home screen and also in the application menu.

Using the Touch Screen

Tap and Hold

Tap and hold an item to view the list of actions based on the selected item and condition. You can also move an item from the Apps screen to the home screen using this method.



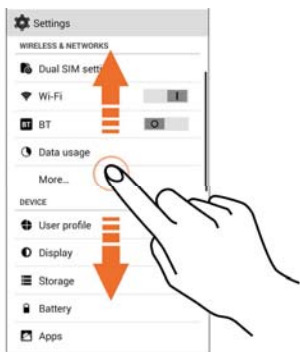
Drag an Item

Tap and hold an item and move your finger on the screen until you reach the target position. The item follows your finger.

You can delete items from the home screen by holding the item and dragging it to the Remove icon (appears when you tap and hold an item in the Home screen).



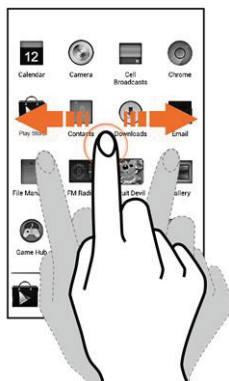
Scroll



Slide your finger on the screen upward or downward (without dragging an item) to scroll.

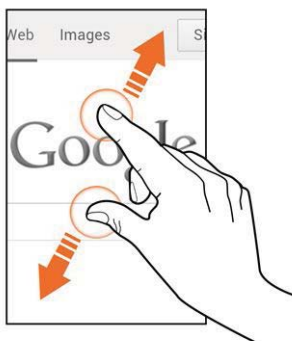
Swipe

Slide your finger in the desired direction. For example, swipe your finger left or right to view your next home screen.



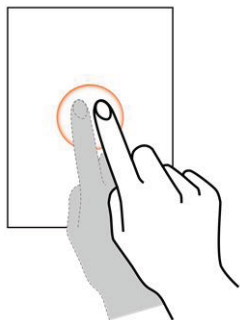
Using Pinch to Zoom

You can open any image or web page and then use your fingers to zoom-in or zoom-out using the pinch gesture.



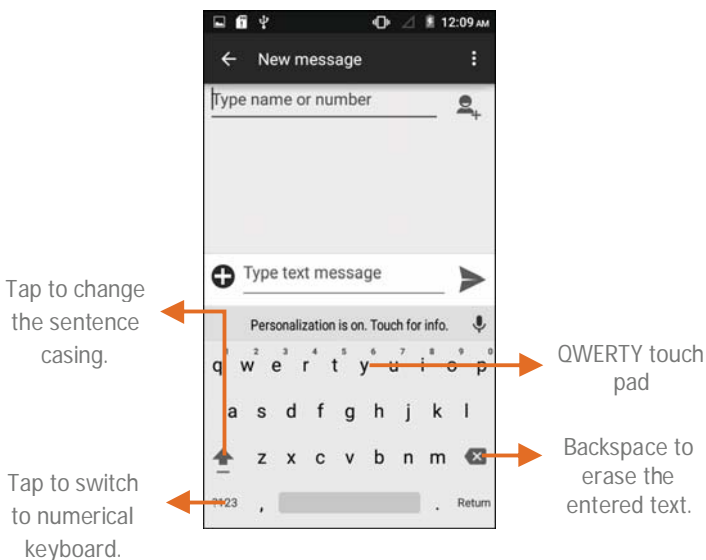
Double-tap

Quickly tap twice on an image, webpage, map, etc. to zoom. For example, double-tap a section of a webpage in the browser to zoom in on that section.



Using the On-screen Keyboard

Some applications display the keyboard by default. In others, tap a text field where you want to enter text to open the keyboard.






After typing, tap  key to close the keyboard.



Tap and hold the text field to open a menu and to cut/copy/paste text.

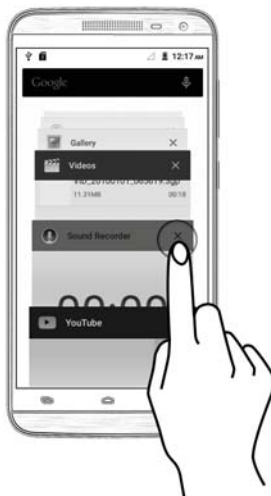
Recent Applications

Tap and hold  key on the home screen to view the list of recent applications. You can easily remove items from the list to free some memory and make your phone work faster.

To remove items from the list:




Drag an item towards left or right.





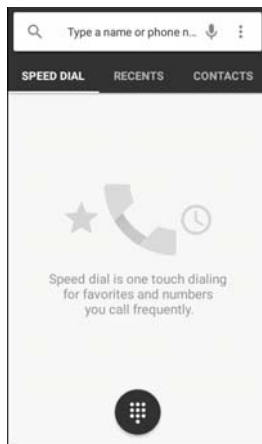
Tap the close button to remove an application.

Calling and Messaging

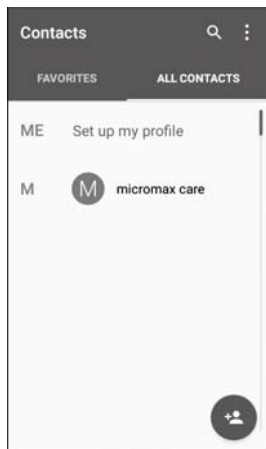
Make a Call

Tap  on the menu screen or the home screen. By default, dialer displays the list of contacts to which calls have been made frequently and contacts which have been marked as favorites.

Tap  to view the dialer, or tap  to view the call history and other settings.




Contacts



Go to  → 



Store, use, and synchronize contact details in your contact list. You can create contact groups or mark contacts as favorites.

Use tabs or swipe through to view the list of contacts and favorite contacts.

Tap  icon to search for your desired contacts, and to add new contacts, tap



You can synchronize your contact list with the accounts configured on this device.

1. Tap the  button from the contacts screen and then tap Accounts.
2. Select the account(s) with which contacts list is to be synchronized. To auto-sync contacts, tap  in Accounts screen and select Auto-sync data.

Your contacts synchronization will be complete in a few seconds.






To synchronize contacts, you need to have Internet connectivity. If the Sync does not proceed as expected, check whether data option is set to ON.

Airplane Mode


Airplane Mode allows you to disable all Mobile networks, Wi-Fi, and Bluetooth connections.

To activate the airplane mode, open Quick settings and select Airplane mode.

Send Message

1. Tap  on the menu screen or home screen and then tap  to compose a message.
2. Tap  icon to view the types of files that can be attached and select the desired type of multimedia file.
3. Tap to select the composition text box and enter your message body in it.

4. Enter the contact name (if it exists) or enter the phone number.

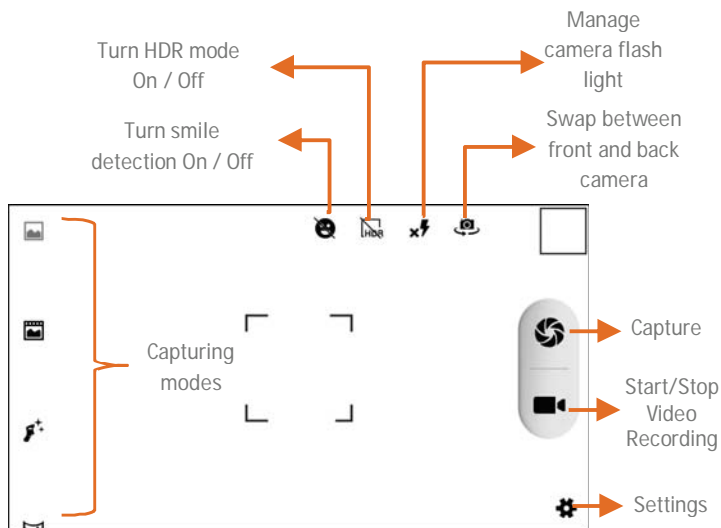
You can also tap the + icon to view and select contact(s) from the contact list.

5. Tap  to send the message.

Multimedia

Camera

Go to  → 



Gallery

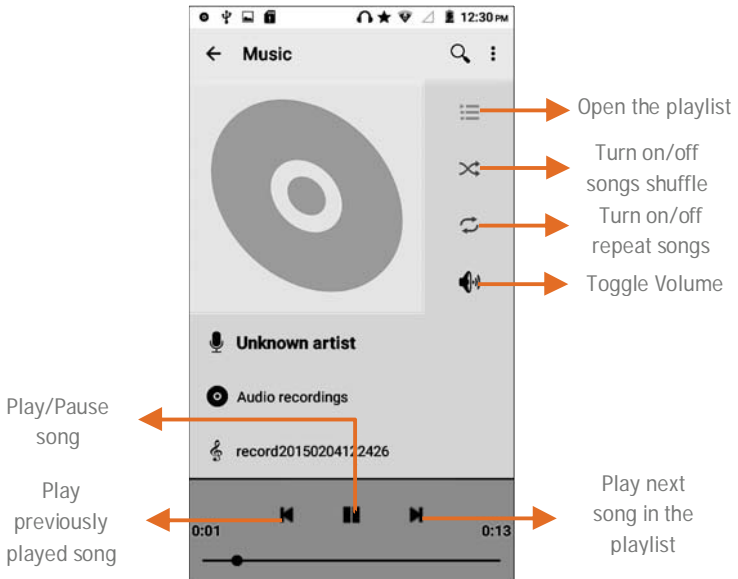


You can view pictures, play videos and share files from the Gallery.
Tap an album to open and view its contents.



You can share/copy/move/delete images and videos from the gallery.

Music Player





Press the phone's volume up/down key to adjust the volume.



You can use a SD card to enhance the storage capacity for your multimedia files such as music, photos, emails, and so on.

FM Radio

Go to  → 

You can listen to your favorite FM channels using the inbuilt FM receiver of your phone. Before starting the FM, plug-in the headset as it works as antenna for the FM radio. Use the intuitive buttons and icons on the phone in the radio interface to enjoy the features of your inbuilt FM radio.



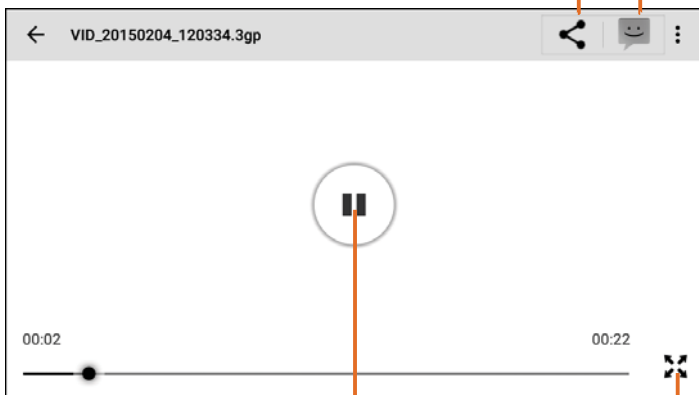
Press the phone's volume up/down key on the right side of the mobile phone to adjust the volume.

Video Player

Go to  → 

Share via
MMS

Share Video





Play/Pause video

Change the video
screen size

Settings, Networks, and Applications



Your phone can connect to various networks and devices, including Internet, Wi-Fi, GPRS, Bluetooth, devices, such as headsets. You can also transfer files to/from your PC through the data cable.

Connect to the Internet

Go to  →  → SIM cards → Cellular data and select the SIM on which data connection is to be enabled.

You may also need to configure the access point name for the data connection to work.

To configure the access point name:

Go to  →  → More → Cellular networks → Access Point Names and select the SIM for which access point name is to be configured. Select the access point name from the list.



By default, the access point name gets configured once you insert the SIM, Or, your network provider sends the access point name settings via SMS. You may need to install these settings. If the access point names are not listed by default, please contact your network provider for the same.

Tethering & Portability

You can use your Q380 as a modem and connect your PC or laptop to the Internet, when required. Start using your SIM data pack on your PC or Laptop now!

Go to  →  → More → Tethering & portable hotspot

USB Tethering

1. Connect your phone with your PC/Laptop via USB cable.
2. Select the USB tethering option.
3. Select your phone network as the network connection in your PC/laptop and get access to the Internet.

BT Tethering

1. Pair your phone with a Bluetooth enabled PC/laptop via

Bluetooth pairing option.

2. Select the BT tethering option in your phone.
3. On the paired PC/laptop, select the Bluetooth device (your phone) and choose to connect to the internet.

Wi-Fi Hotspot

1. Turn on the Wi-Fi hotspot option in your phone.
2. On the other Wi-Fi enabled PC/laptop/handset, choose your phone as a Wi-Fi network to connect with it.
3. View and configure Wi-Fi hotspot settings by tapping Set up Wi-Fi hotspot option.




Your mobile operator will charge you based on your GPRS data usage.

Pair With Bluetooth Devices

Go to  →  → BT



1. If Bluetooth is off, turn it on. Your phone scans and displays the Bluetooth devices in range.
2. Tap the ID of the other device in the list to pair with it.
3. You will be prompted to confirm passkey on both devices.
4. Tap Pair to confirm the passkey and pair the devices. On successful pairing, your phone connects to the device.



If the device you want to pair with is not in the list, make sure the Bluetooth on that device is turned on, then tap  and select Refresh to search again.

Configuring E-Mail

You can check and reply to your e-mails from your Q380 from anywhere and anytime. Apart from the Gmail account, you can configure other accounts too on this device.

To set up an email account, go to  →  → **Accounts** → Add account, select the type of account you want to create and enter the required details to successfully configure your account on the device.

The server will check for online settings automatically and your account will be set up. If not, please check your Internet settings before proceeding.

Google Maps

Google Maps is a web-based service offered by Google Inc. which offers you access to various map-based services. You can view various streets, landmarks and can even plan your routes with the help of Google Maps. It comes with a navigation system (GPS required) which gives step-by-step route guidance while driving or walking. You can even download maps for offline usage. This serves as a useful application for your day-to-day usage.

Settings required for Google Maps access include:

Enable location access from  →  → Location.

Go to  →  to start using Google Maps.



Internet connection is required for using Google Maps. When you use the map, you use your Internet connection to transfer data to and from your phone.





Google Maps application may not be available in every street, country or region.





Micromax does not guarantee the accuracy of any directional services.

Play Store

Your Android phone lets you access unlimited entertainment sources. You can download applications, games, movies, and books from the ever increasing Play Store.

To view and manage the list of all inbuilt, downloaded, and running applications, go to  →  → Apps.

To download applications, games, movies, and books from the Play Store, go to  →  to access the Google Play Store. View the details and download items, as desired.



Not all items are free of cost in the Play Store.



You need to enable internet connection and configure Google account on your device to get access to the Play Store.

Safety Precautions



Switch off your device in any area with potential explosive atmosphere. Sparks arising out of radio frequency may cause fire or explosion. Therefore switch off your device at refueling stations, fuel depots, chemical plants or places where blasting operation is in progress. Remember to comply with legal requirements and local restrictions when using the phone.



Your Phone's radio waves may interfere with inadequately shielded medical devices. Consult a physician or manufacturer of the medical device to know whether they are adequately shielded from external Radio Frequency.

Switch off your device when regulations require you to do so.



Always keep the phone and accessories out of reach of small children. Small parts such as the SIM card or micro SD card can be dismantled and swallowed by small children.



Do not place the phone near electromagnetic data carriers such as credit/Debit cards. Information stored on them could be lost.



Permanent damage to hearing may occur if you use earphones at high volume for prolonged periods. Set your volume to a safe level. If you experience discomfort in your ears, reduce the volume or discontinue the use of your earphones.



Manufacturers of medical devices recommend a minimum distance of 15.3 cm (6 inches) between a wireless device and an implanted medical device such as pacemaker or cardioverter defibrillator to avoid issues arising out of radio frequency interference.



The mains voltage (V) specified on the power supply unit must not be exceeded to prevent damage to the charging device. The power supply must be plugged into an easily accessible AC power socket when charging the battery.



You may only open the phone to replace the battery (if not inbuilt), SIM card and micro SD card. You must not disassemble the battery under any circumstances. All other changes to this device are strictly prohibited and will invalidate the warranty.



The phone may cause interference in the vicinity of TV sets, radios and PCs.



The battery may cause damage, injury or burns if a conductive material closes the circuit of the terminals. Exercise care in handling any charged battery, particularly when placing it inside your pocket, purse or other container with metal objects. Do not dispose of batteries in fire as they may explode.



Do not use the phone while driving. When you have to use the phone, please use the earpiece. Please put the phone safely in the phone stand. Do not put it onto any passenger seat or any place from which it may fall down during collision or emergency braking.



Flight is influenced by interference caused by the phone. It is not advised to switch on a phone during flight.



Please repair the device at Micromax authorized service center only. Repairing the device by yourself invalidates the warranty rules.

Taking Care of your device

Your device is a product of superior design and craftsmanship and should be handled with care. The following suggestions will help you protect your phone.

- Keep the device dry. Precipitation, humidity, and all types of liquids or moisture can rust the electronic circuits. If your device gets wet, remove the battery, wipe it with a dry cloth and take it to an authorized service center.
- Do not store the device in high or cold temperature. Extreme temperatures can shorten the life of electronic devices and damage batteries.
- Do not use or store the device in dusty, dirty areas. Its moving parts and electronic components can get damaged.
- Do not attempt to open the device other than as instructed in this guide.
- Do not drop, knock, or shake the device. Rough handling can break internal circuit boards and fine mechanics.
- Do not use harsh chemicals, cleaning solvents, or strong detergents to clean the device. Only use a soft, clean, dry cloth to clean the surface of the device.
- Do not store your device near magnetic fields or allow your device to come in contact with magnetic fields for extended period of time.

Battery Recommendations

- Please put the battery in a cool and well-ventilated place out of direct sunlight. We recommend you to charge the battery at room temperature range.
- Batteries have life cycles. After a full charge, if the power reserve of the battery tend to deplete inordinately faster than usual, the battery life is at an end. Replace the battery with a new battery of the same make and specification.
- Do not discard the battery with household trash. Please dispose of used battery according to your local environmental laws and guidelines.

Recycle your Phone



The WEEE logo (shown at the left) appears on the product (battery, handset, and charger) to indicate that this product must not be disposed off or dumped with your other household wastes. You are liable to dispose of all your electronic or electrical waste equipment by relocating over to the specified collection point for recycling of such hazardous waste.

Collection and proper recovery of your electronic waste equipment at the time of disposal will allow us to help preserve the environment. Recycling of the electronic waste equipment will ensure safety of human health and environment. For more information on best practices for disposal of electronic and electrical waste, please visit to our web site:

www.micromaxinfo.com/weee.php.

Note: Micromax will not bear any responsibility for any incompliance with the above mentioned guidelines or improper usage of the mobile phone.

Disclaimer

- The colors, specifications, functions and graphics shown/mentioned in the user manual may differ from the actual product. In such a case, the latter shall govern. Images shown are for representation purpose only. Specifications are subject to change without prior notice. Micromax keeps the right to modify the content in this user guide without prior notice.
- Upon first use of your device, your device will send information related to your mobile, IMEI numbers, location details and other software details through SMS* automatically. This information may be used as further specified in Micromax privacy policy**.
- Talk and standby times are affected by network preferences, type of SIM cards, connected accessories and individual usage patterns. Services and some features may be dependent on the network, service/content providers, SIM cards, compatibility of the devices used and the content formats supported.
- Other product logos and company names mentioned herein may be trademarks or trade names of their respective owners.

*Operator tariff shall be applicable for SMS.

**Micromax privacy policy is available at www.micromaxinfo.com.

Copyright

All rights reserved. Reproduction, transfer, distribution or storage of part or all of the contents in this document in any form without the prior written permission of Micromax is strictly prohibited.