



MOTOROLA
RAZR™ HD

LIFE.  POWERED.

CONGRATULATIONS

MOTOROLA RAZR HD

Combining a huge HD display, blistering fast processor, and long-life battery in an impossibly thin design, MOTOROLA RAZR™ HD has tons of advanced features for everything you want to do—remote media access, intuitive smart apps, multitasking, and more.

- Your phone's large **4.7" Super AMOLED 720p HD display** makes video playback crisper and more vivid than ever before.
- The powerful **long-life battery** gives you all day and all night performance.
- The **SMARTACTIONS™** app lets you create rules to customize your phone and optimize power usage.
- The Google™ Android **Ice Cream Sandwich** operating system gives you direct access to the latest apps, widgets, and power management features.

Note: Certain apps and features may not be available in all countries.



Caution: Before assembling, charging, or using your phone for the first time, please read the important safety, regulatory and legal information provided with your product.

SAR


This product meets the applicable limit for exposure to radio waves (known as SAR) of 2.0 W/kg (ICNIRP). The limits and guidelines include a substantial safety margin designed to assure the safety of all persons, regardless of age and health. The highest SAR values measured for this device are listed in the regulatory information packaged with your product.

Note: When using the product while worn on your body, either use an approved accessory such as a holster or maintain a distance of 2.5 cm (1 inch) from the body to ensure compliance with SAR requirements. Note that the product may be transmitting even if you are not making a phone call.

MORE

- **Answers:** Touch Apps  >  **Help Center.**
- **Support:** Go to www.motorola.com/support.
- **Updates:** Phone updates, PC software, user's guides, online help, and more at www.motorola.com/myrazrhd.
- **Accessories:** Find more for your phone at www.motorola.com/products.

- **Social:** The latest news, tips & tricks, videos, and so much more—join us on:

 **YouTube™** www.youtube.com/motorola

 **Facebook™** www.facebook.com/motorola

 **Twitter** www.twitter.com/motomobile

For Australia and New Zealand users:

- **Support:** Go to www.motorola.com/support or call 1300 138 823 (Australia), or 0508 6686 7652 (New Zealand).
- **Social:** The latest news, tips & tricks, videos, and so much more—join us on:

 **YouTube™** www.youtube.com/motorola

 **Facebook** www.facebook.com/motorolaus

Notes:

- All screens in this guide are simulated. Actual displays may vary.
- Instructions to perform tasks in this guide may change depending on the software version on your phone.
- Unless specified, instructions to perform tasks in this guide assume that you are starting from the home screen.

YOUR PHONE

the important keys & connectors



Note: Your phone might look a little different.

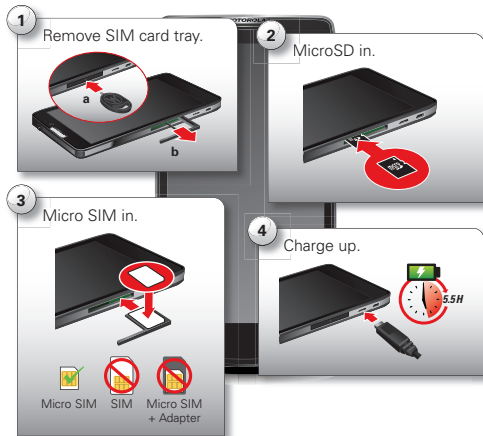
CONTENTS

LET'S GO	3
CONTROL	6
HOME SCREEN	11
APPS & UPDATES	14
CALLS	17
CONTACTS	20
MESSAGES	23
TEXT ENTRY	25
SOCIAL NETWORKING	28
TIPS & TRICKS	28
DIGITAL LIVING	30
PHOTOS & VIDEOS	30
MUSIC	34
WEB	36
PERSONALIZE	37
LOCATION	39
WIRELESS	41
TOOLS	45
MANAGEMENT	48
SECURITY	52
TROUBLESHOOTING	55
PRODUCT SAFETY & LEGAL	56

LET'S GO

let's get you up and running

ASSEMBLE & CHARGE



- 1 Insert the SIM tray removal tool into the hole to unlock the SIM card tray, then slide the SIM card tray out of the phone.



Note: Take care with the SIM card tray.

- 2 Insert the microSD memory card into the left card slot.

Tip: Use the SIM tray removal tool to push the microSD card all the way into the slot, and to eject the microSD card when you need to remove it.

- 3 Insert the micro SIM card into the SIM card tray, with the gold contacts facing down, then push the SIM card tray into the right card slot.

- 4 Plug your phone charger into a power outlet, and insert the charger's micro USB connector into your phone to charge it.

Note: This product uses a non-removable battery. The battery should only be replaced by a Motorola-approved service facility. Any attempt to remove or replace your battery may damage the product and void your warranty.

Tip: In the unlikely event that your device becomes unresponsive, try a forced reboot—press and hold both the Power key and the down volume key for up to 10 seconds.

Tip: To save battery life, see “**BATTERY LIFE**” on page 29.

SET UP & GO



Note: This phone supports apps and services that use a lot of data, so make sure your data plan meets your needs. Contact your service provider for details.

INITIAL SETUP



Create or log in to your Google™ account to get access to all of your Google services, like Gmail™, Google+, Google Play™, and more. Registration is secure and only takes a few minutes. Your Gmail contacts are synced to your phone when you log in to your Google account.

To set up additional personal email accounts or a corporate email account, follow the on-screen instructions.


For more information about setting up accounts on your phone, see “**MANAGE ACCOUNTS**” on page 49.

WI-FI CONNECT

To use a Wi-Fi network for Internet access, touch the status bar at the top of the home screen and drag it down. Touch the **Wi-Fi networks available** notification to select a preferred network.

You can also touch Apps (⋮) >  **Settings** > **Wi-Fi**, then touch the **Wi-Fi** power switch to turn it  **ON**, to scan and connect to wireless networks. There's more in “**WI-FI NETWORKS**” on page 41.

COOL CONTENT & MORE

Browse hundreds of thousands of the coolest apps on the planet, and download the newest music, movies, books, magazine, and games, all from Google Play™. Touch Apps (⋮) >  **Play Store**.

Download new apps with “**BROWSE & INSTALL APPS**” on page 14. You can install a microSD memory card in your phone, and load it up with photos, videos, and music from your computer (see “**MEMORY CARD & FILE MANAGEMENT**” on page 48).

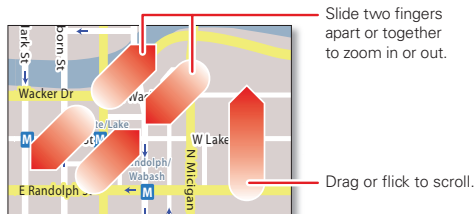
CONTROL

a few essentials

TOUCH

GESTURES

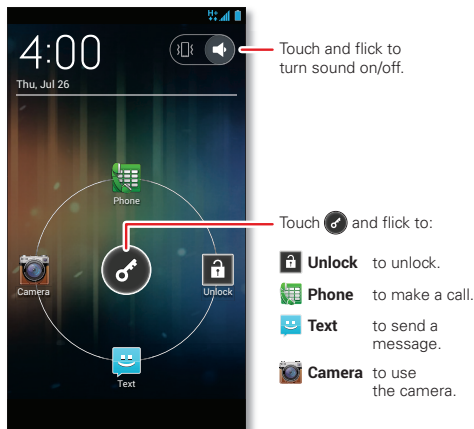
- **Touch:** Choose an icon or option.
- **Touch & Hold:** Select an item and open an action bar.
- **Drag:** Move items in the home screen, or scroll slowly through lists.
- **Flick:** Scroll quickly between views or through lists.
- **Pinch or double-touch:** Zoom in and out on websites, photos, and maps.




UNLOCK & LOCK TOUCHSCREEN


To unlock the screen, press the Power key, then touch and flick to **Unlock**.


To lock the screen, press the Power key, or let the screen time out (don't press anything).





HOME, BACK, RECENT APPS, AND MENU

Touch Home  to close a menu or app and return to the home screen.

Touch Back  to go back one screen.


Touch Recent apps  to see the most recent apps you've used, then touch an app to re-open it.

Tip: To remove an item from the recent apps list, flick it left or right.

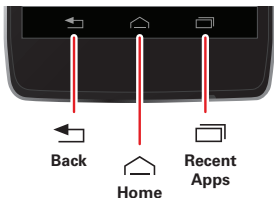
In some apps, you can touch Menu  to open menu options, and touch  to start a search.

TOUCHSCREEN ON/OFF

To save your battery, prevent accidental touches, or when you want to wipe smudges off your touchscreen, put the touchscreen to sleep by pressing the Power key. To wake up the touchscreen, just press the Power key again.

To change how long your phone waits before the screen goes to sleep automatically, touch Apps 
> **Settings** > **Display** > **Sleep**.

Tip: To make the screen lock when it goes to sleep, see "**SCREEN LOCK**" on page 52.




Note: Your touchscreen might stay dark if the sensor just above it is covered. Don't use covers or screen protectors (even clear ones) that cover this sensor.



ROTATE THE SCREEN

When you turn your phone, the touchscreen can rotate to stay right-side up:

Find it: Apps  >  **Settings** > **Display** > **Auto-rotate screen**

PRESS

POWER KEY MENU

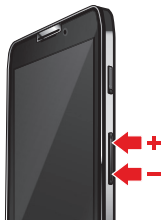
Press and hold the Power key to turn off your phone (**Power off**), turn off all wireless connections and put the phone into low-power **Sleep** mode, turn **Airplane mode** on and off, or change the sound setting.

VOLUME KEYS

Press the volume keys to change ring volume (in the home screen) or earpiece volume (during a call).

When playing music or videos, press the volume keys to adjust media volume.


Tip: When your phone rings, press a volume key to quickly silence your ringtone.



SPEAK

VOICE ACTIONS

You can do a lot of things just by talking to your phone—call or text your friends, get directions, set an alarm, and more.

- 1 Touch  in the Google™ Search widget in the home screen.
- 2 Say what you want to do.

If voice actions doesn't understand what you said, it shows a list of search terms and actions you can touch to choose.

Some actions, like "send email" and "note to self," prompt you to complete the action by saying or typing more information.

Voice Action Commands


Say	Followed by
<i>words you want to search for</i>	Example: "Motorola accessories."
<i>contact name</i>	Example: "Mike LeBeau" (opens Mike's contact card).
"Call"	Contact name & optionally, "home," "mobile," or "work." Example: "Call Mike LeBeau at home."
"Call"	Digits of a phone number. Example: "Call 650 555 1234."
"Call"	Business name. Example: "Call Ruth's Floral Shop."
"Map of"	Address, name, business name, type of business, or other location. Example: "Map of Golden Gate Park, San Francisco."

Say	Followed by
“Directions to” or “Navigate to”	Address, name, business name, type of business, or other destination. Example: “Directions to 1299 Colusa Avenue, Berkeley, California,” or “Navigate to Union Square, San Francisco.”
“Go to”	Search string or URL. Example: “Go to Google.com.”
“Send text” or “Send SMS”	“To” & contact names, “Message” & message text (speak punctuation). Example: “Send text to Hugh Briss, subject, new shoes, message, I can’t wait to show you my new shoes, period.”
“Send email”	One or more of: “To” & contact names, “Cc” & contact names, “Bcc” & contact names, “Subject” & subject text, “Message” & message text (speak punctuation). Example: “Send email to Hugh Briss, subject, new shoes, message, I can’t wait to show you my new shoes, period.”

Say	Followed by
“Note to self”	Message text. Example: “Note to self: remember the milk.”
“Set alarm”	“Time” or “for” & time (such as “10:45 a.m.” or “20 minutes from now”), “Label” & name of alarm. Example: “Set alarm for 7:45 p.m., label, switch the laundry.”
“Listen to”	Words to search for on your music app or YouTube™ (such as the name of a song, artist, or album). Example: “Listen to: Black Hole Sun.”

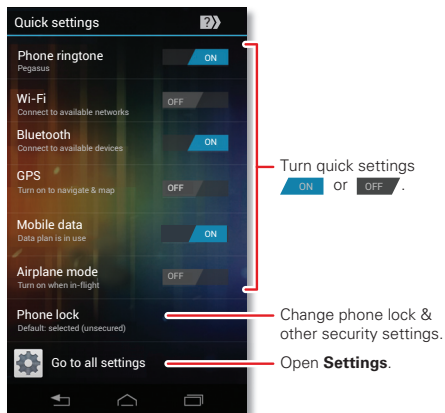
For more information, touch Apps  >  Search > 
> **Help > Help Center > Tutorial.**

VOICE TEXT ENTRY

Touch a text entry field to open the touchscreen keypad. Touch , then say what you want to type. You can speak for as long as you like, pause whenever you want, and dictate punctuation to create correct sentences.

QUICK SETTINGS

To quickly change **Phone ringtone**, **Wi-Fi**, **Bluetooth**, **GPS**, **Mobile data**, **Airplane mode**, and **Phone lock** settings from the home screen, flick right to go to the quick settings page.

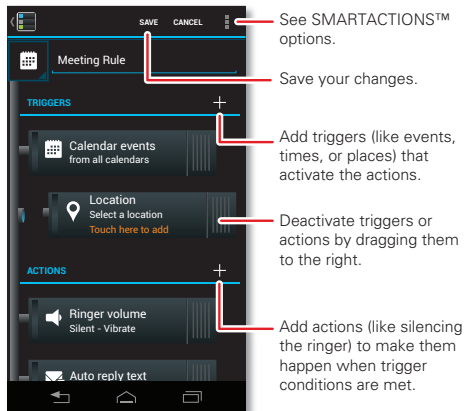





SMARTACTIONS™

Tired of doing the same tasks over and over again? Let the SMARTACTIONS™ app do them for you. You can create rules to do things, like automatically dim the touch screen when the battery is low, set your ringer to vibrate at work, or send auto-reply messages when you're busy.

Find it: Apps > **Smart Actions**



Touch **+** to create a SMARTACTIONS rule.



For more information, touch Apps  >  **Smart Actions**
> Menu  > **Help**.

QUICK TIPS


If you're not sure what to do next, try one of these:

To...	
Open a text message, see contact details, or open items in a list.	Touch the message, contact, or item.
See options for the current screen (if available).	Touch Menu  .
Select an item and open an action bar (if available).	Touch & hold the item.
Go back to the home screen.	Touch Home  .
Wake up your phone.	Press the Power key.
Reboot an unresponsive phone.	Press and hold both the Power key and the down volume key for up to 10 seconds.

HOME SCREEN

quick access to the things you need most

QUICK START: HOME SCREEN

The *home screen* gives you all your latest information in one place. It's what you see when you turn on your phone or touch Home .






Note: Your home screen might look a little different.


USE & CHANGE YOUR HOME SCREEN

Shortcuts on the home screen are icons that open your favorite apps. *Widgets* are apps or tools that provide additional phone functionality and live content.



To see other pages of shortcuts and widgets, flick the home screen left or right.

- **Add, reorder, or delete pages:** From your home screen touch Home . Touch  to add a page. Touch and hold an existing page, then drag it left or right to reorder. Drag a page up to **Remove**.
- **Add shortcuts & widgets:** Touch Apps , touch and hold an app or widget, then drag it to a spot on a home screen page.
- **Create shortcut folders:** To create a folder of shortcuts on your home screen, touch and hold a shortcut, then drag it on top of another shortcut. To add more shortcuts, drag them onto the folder. To name the folder, touch it and enter a name at the bottom.
- **Resize widgets:** You can resize some widgets—touch and hold a widget until you feel a vibration, then release. Drag the blue diamonds at the edges to resize.

- **Move or delete shortcuts & widgets:** Touch and hold a shortcut or widget until you feel a vibration, then drag it to another spot, another page, or **Remove** at the top of the screen.
- **Change wallpaper:** Touch and hold an empty spot on the home screen.

Shortcuts in the *favorites tray* at the bottom of the home screen appear in all home screen pages. You can drag shortcuts or folders in or out of the favorites tray (except Apps ) for instant access from any home page.


SEARCH

Touch the Google™ Search widget in the home screen (or touch Apps  >  **Search**), then start typing your search text.





As you type, suggestions appear below the search field:

- To search for a suggestion, touch it.
- To add a suggestion to the search field, touch the arrow beside it.

- To search for the text in the search field, touch  on the touchscreen keypad.


The browser shows a list of search results.

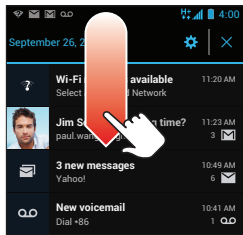
To set where Google™ Search looks on your phone, touch Menu  > **Settings** > **Searchable items**. To adjust Google Search privacy settings, touch Menu  > **Settings** > **Google Search**.

PHONE STATUS & NOTIFICATIONS

































Icons at the top right of the home screen show status information, like signal strength, battery level, and time.

Icons at the top left show messages and app notifications. To see your notifications, touch the status bar and drag it down. Touch a notification to select it.

Tip: To remove a notification from the list, flick it left or right. To clear all notifications, touch .



STATUS & NOTIFICATION ICONS

	network (full signal)		H+ connection
	network roaming		3G connection
	network roaming		4G connection
	Wi-Fi in range		Bluetooth™ on
	Wi-Fi connected		Bluetooth connected
	active call		missed call
	new text message		new voicemail
	new email		new Gmail™
	calendar event reminder		background data sync
	GPS active		music player active
	USB connected		microSD card
	downloading		alarm set
	vibrate		speakerphone on
	sound off		call muted
	battery (charging)		airplane mode
	battery (full charge)		warning

Tip: Network and Wi-Fi connection icons turn blue when your phone exchanges data with your Google™ account.

Note: Apps you download from Google Play™ may show other icons in the status bar to alert you to specific events.



APPS & UPDATES

get the app you want

QUICK START: APPS & UPDATES

Touch Apps (⋮) in any home screen page, then flick left or right to see all your apps.



To close the apps screen, touch Home  or Back .


BROWSE & INSTALL APPS

One of the great things about a smartphone is the apps. Whatever you're into, whatever you want to do, there's probably an app that can help you. So, go to the place that has it all, Google Play™ Store, where you can choose from hundreds of thousands of apps.

Find it: Apps (⋮) >  **Play Store**

Scroll to and touch the app you want to install. Then, touch **Install** (if app is free) or **Buy**.

New apps that you install are added to the apps screen.

Tip: Choose your apps and updates carefully, from trusted sites, like  **Play Store**, as some may impact your phone's performance—see “**CHOOSE CAREFULLY**” on page 15.


Note: When installing an app, make sure you read the alerts that tell you what information the app will access. If you don't want the app to have access to this information, cancel the installation.

CREATE SHORTCUT FOLDERS

You can use home screen folders to logically group and store your app shortcuts in a single location.

To create a shortcut folder in the home screen, drag one shortcut onto another to put them both in a folder. To add other shortcuts, drag them onto the folder icon. To name the folder, touch it and enter a name at the bottom.

RECENT APPS




Touch Recent apps  to see the most recent apps you've used, then touch an app to re-open it.

Tip: To remove an item from the recent apps list, flick it left or right.

MANAGE & RESTORE APPS



Touch Apps  >  **Settings** > **Apps**.

Touch an app to see its file size, access permissions, and other details, then touch **Disable**, **Force stop**, **Uninstall** (for apps you downloaded), **Clear cache**, or other options.

To reinstall apps from Google Play, touch Apps  >  **Play Store**, then touch Menu  > **My Apps** > **ALL**. Apps that you have previously purchased from Google Play are listed and available for download.

CHOOSE CAREFULLY

Apps are great. There's something for everyone. Play, communicate, work, or have fun. But remember, choose your apps carefully. Here are a few tips:

- To help prevent spyware, phishing, or viruses from affecting your phone or privacy, use apps from trusted sites, like  **Play Store**.
- In  **Play Store**, check an app's ratings and comments before installing.
- If you doubt the safety of an app, don't install it.
- Like all apps, downloaded apps will use up memory, data, battery, and processing power—some more than others. For example, a simple battery level widget will use less than a streaming music player app. After installing an app, if you're not happy with how much memory, data, battery or processing

power it's using, uninstall it. You can always install it again later.


- Just like web browsing, you may want to monitor children's access to apps to help prevent exposure to inappropriate content.
- Certain apps may not provide completely accurate information. Take care, especially when it comes to personal health.

UPDATE MY PHONE

You can check, download, and install phone software updates using your phone, or using your computer:

- Using your phone:

You may get an automatic notification of an available update on your phone. Simply follow the instructions to download and install.

To manually check for updates, touch Apps (⋮)
>  **Settings** > **About phone** > **System updates**.

Your phone downloads any updates over your mobile network. Remember, these updates can be quite large (25MB or more) and may not be available in all countries. If you don't have an unlimited data plan, or mobile network updates are not available in your country, you can update using a computer.

- Using your computer:



On your computer, go to www.motorola.com/myrazrhd and check the "Software" links. If an update is available, follow the installation instructions.

CALLS

it's good to talk

QUICK START: CALLS

In the home screen, touch  **Phone**.

Tip: When the phone is locked, touch  and flick to  **Phone**.

DIALER



See phone options.

Click the screen left or right to see dialer, recent calls, or phonebook.

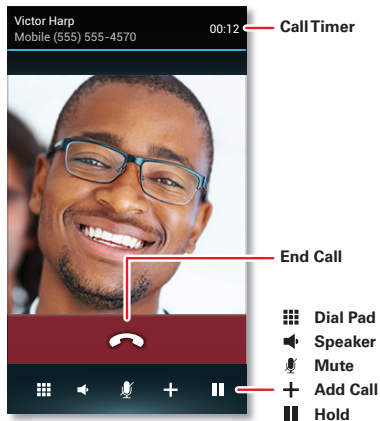
Add Number to Contacts

Call
Enter a phone number
& touch here to call it.





Voice Dial

Tip: Search for contacts right from the dialpad! For example, to find **Jeff** in your contacts list, touch **5-3-3-3**. Matching contacts appear above the number field.

DURING A CALL





To use a Bluetooth™ device, touch **Bluetooth**. (The device must be turned on and previously paired—see “**CONNECT NEW BLUETOOTH DEVICES**” on page 43.)

Tip: You can touch Home  or Back  to leave the active call display. To reopen it, touch Home  >  **Phone**.

Note: Using a mobile device or accessory while driving may cause distraction and may be illegal. Always obey the laws and drive safely.



MAKE & ANSWER CALLS



To **make** a call, touch  **Phone**, enter a number, then touch .

Tip: When the phone is locked, touch  and flick to  **Phone** to make a call.

Tip: When you hold your phone to your ear, the display goes dark to prevent accidental touches. When you move the phone away from your ear, the display lights up again.

To **answer** a call, touch  and flick to .

To send an incoming call to your **voicemail**, touch  and flick to .

To send a pre-set **text message** to the caller, touch  and flick to . Select a message to immediately send it.

Tip: To silence an incoming call alert, press the Power key or the volume keys.

Can't talk now. What's up?

I'll call you right back.




I'll call you later.

Can't talk now. Call me later?

Custom message...


RECENT CALLS

Find it:  **Phone** > **Recent**

- To call a number, touch  next to the entry.
- To see call details, touch the entry.
- To send a text message, create a contact, view a contact, or other options, touch and hold the entry.
- To search the recent calls list, touch .
- To clear the list, touch Menu  > **Clear list**.

FAVORITES

Find it: Apps  >  **People** > **FAVORITES**

- To call, text, email, or view contact information, touch the contact.
- To edit, share, delete, or set a ringtone for a contact, touch the contact, then touch Menu .

CONFERENCE CALLS



To start a conference call, call the first number. After the call connects, touch **Add call**. Dial the next number, or select it from contacts or favorites. When the next number answers, touch **Merge**.

YOUR PHONE NUMBER

Find it: Apps  >  **Settings** > **About phone** > **Status**
> **My Phone number**

EMERGENCY CALLS

Note: Your service provider programs one or more emergency phone numbers that you can call under any circumstances, even when your phone is locked. Emergency numbers vary by country. Your pre-programmed emergency number(s) may not work in all locations, and sometimes an emergency call cannot be placed due to network, environmental, or interference issues.




- 1 Touch  **Phone** (if your phone is locked, touch **Emergency Call**).
- 2 Enter the emergency number.
- 3 Touch  to call the emergency number.

Note: Your phone can use location based services (GPS and AGPS) to help emergency services find you. See “**LOCATION SERVICES**” on page 59.

COOL DOWN

In very limited circumstances, such as where your phone has been exposed to extreme heat, you may see “Cool Down” messages. To avoid possible damage to your battery and phone, you should follow these instructions until the phone is within its recommended temperature range. When your phone is in “Cool Down” mode, only emergency calls can be made.

MORE CALLING FEATURES

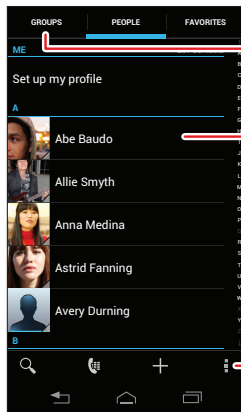
Feature	
speed dial	<p>Your phone can store nine phone numbers that you can call with a single keypress. To store a speed dial number, touch  Phone > Menu  > Speed dial setup, and insert a number in an empty speed dial slot.</p> <p>To call a speed dial number, touch and hold the single-digit speed dial number in the dialer.</p>
voice dial	<p>Touch  in the Google™ Search widget, then say the contact name, business name, or phone number you want to call.</p>
international calls	<p>If your phone service includes international dialing, press and hold 0 to insert your local international access code (indicated by +). Then enter the country code and phone number.</p>
voicemail	<p>To listen to your voicemail messages, touch & hold 1 in the dialer.</p>

CONTACTS

be a people person

QUICK START: CONTACTS

Find it: Apps  >  **People**



Create & view groups of contacts.

Touch to view contact information, call, send a text message, & more.

Touch a letter to jump to contact names that start with that letter.

 Search Your **People**.

 Switch to dialer.

 Add a contact.

 See more options.

TRANSFER CONTACTS

Get all your contacts, all in one place. Here are a few helpful hints:

- Use Gmail™

When you first set up your phone and sign in to your Google™ account, all your Gmail contacts are synced automatically with your People app. After that, your contacts stay in sync whether you make changes on your phone, from another device, or from a web browser. Most contact applications for mobile phones and email accounts allow you to export your contacts as a “.csv” file. You can then use Gmail to import the file. For more details, go to

www.motorola.com/transfercontacts or log in to your Gmail account on your computer and select “Help”.



- More

There are other methods and tools to help you at www.motorola.com/transfercontacts.

LINK CONTACTS


You might have two or more contacts for the same person, maybe a Gmail contact who is also stored on your phone, or one friend with two email addresses. To combine these contacts:

Find it: Apps  >  **People**

Touch a contact to open it, touch Menu  > **Edit**
> Menu  > **Join**, then touch the second contact.





CALL OR EMAIL CONTACTS

Find it: Apps  >  **People**

- To call a contact, touch the contact's name, then touch the number you want to call. To send a text message, touch  next to the number.
- To email a contact, touch the contact's name, then touch the contact's email address.

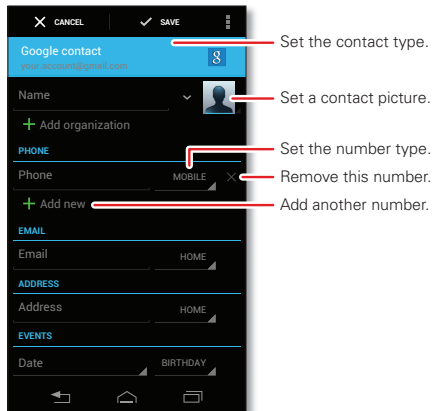
VIEW & USE CONTACTS

Find it: Apps  >  **People**

- To find a contact, touch  and type the contact name.
Touch a contact to open its details. You can start a call or message by touching the phone number, messaging  button, or email address.
- To change which group of contacts is shown (like **All contacts** or contacts from your Gmail account) touch Menu  > **Contacts to display**.
- To change how you view the list of contacts, touch Menu  > **Settings** > **Display options**.


CREATE CONTACTS

Find it: Apps  >  People > +



are backed up, and are accessible from every device you use to access your Google account.


FAVORITES

To add a contact to your favorites list, touch the contact to open it, then touch .


To see your favorites list:

Find it: Apps  >  People > FAVORITES

EDIT OR DELETE CONTACTS

Find it: Apps  >  People > *contact* > Menu  > Edit or Delete

SYNCHRONIZE CONTACTS

When you change one of your contacts, your phone automatically updates your other accounts. When you change a contact in one of your other accounts, your phone updates the contact information in your  People app.

Touch any entry area to open the touchscreen keypad.

When you're finished, touch **Done**.

Where are contacts saved? Your phone saves new contacts in its memory, and syncs them remotely with your Google™ account. Contacts on the Google Server

PERSONALIZE CONTACTS

Find it: Apps  >  **People**




Add a photo: Touch *contact* > Menu  > **Edit** > .

Set a ringtone: Touch *contact* > Menu  > **Set ringtone**.

GROUPS

Find it: Apps  >  **People** > **GROUPS** > *group name*

You can put your contacts into groups (like “Friends” or “Family”) to make it easier to find them.



To create a new group, touch Apps  >  **People**
> **GROUPS** > .





MESSAGES

sometimes it's best to text, or IM, or email . . .

READ & REPLY TO MESSAGES


Find it: Apps  >  **Text Messaging**

Tip: When the phone is locked, touch  and flick to  **Text**.

- To **open** a text message and all of its replies, touch it.
- To **respond** to a text message, open it and enter your response in the text box at the bottom.
- To **delete** a message, touch and hold to select it, then drag it to  at the upper right.
- To **adjust** messaging options, touch Apps 
>  **Text Messaging** > Menu  > **Messaging settings**.


CREATE MESSAGES

Find it: Apps  >  **Text Messaging** > 

Enter the recipient and message. Touch Menu  to **Insert smiley**, **Set priority**, or **Add subject**.

To add an attachment, touch  in the upper right corner.

SEND & RECEIVE MESSAGE ATTACHMENTS

To send a file in a message, open a new message and touch  in the upper right corner.



When you receive a message with an attachment, open the message and touch the file name to download it. Touch the name again to open it. Some file types can be converted to HTML for faster viewing, and your phone will show **Get HTML version**.



While viewing the attachment, touch it to save it, share it, and more.




Tip: To send and receive large attachments faster, use a Wi-Fi connection (see “**WI-FI NETWORKS**” on page 41).

EMAIL

The first time you turned on your phone, you probably set up or logged in to your Google™ Gmail™ account.



If not, you can set up a Gmail account by touching Apps  >  **Settings** > **Accounts & sync** > **ADD ACCOUNT** > **Google**.

To read and reply to messages on your Gmail account, touch Apps  >  **Gmail**.

Tip: For more information, touch Apps  >  **Gmail** > Menu  > **Help**.

EMAIL



You can set up multiple email accounts on your phone.

Touch Apps  >  **Settings** > **Accounts & sync** > **ADD ACCOUNT**, then:

- Select **Corporate** for Microsoft™ Exchange server work email accounts. Enter details from your IT administrator.




Tip: You might need to enter your domain name and user name (like *domain/username*).


- Select **Email** for your personal email accounts. For account details, contact the account provider.

To read and reply to messages on your email accounts, touch Apps  >  **Email**.

QUICK RESPONSES

You can create and save frequently-used text phrases and email replies, and quickly insert them in email messages you write.



To **create** a quick response, touch Apps  >  **Email** >  > *email account name* > **Quick responses** > **Create new**. Enter your quick response text, and touch **Save** to save it.

To **insert** a quick response in an email message you're composing, touch Menu  > **Insert quick response** > *quick response text*.

Note: You can insert only the quick responses you create for a specific email account. If you have multiple email accounts, you'll need to create quick responses for each account.


INSTANT MESSAGES

To send and receive instant messages, you can use Google Talk™.

Find it: Apps  >  **Talk**

Tip: You can also download an instant messaging app from Google Play™.

VOICEMAIL

When you have a new voicemail,  appears in the status bar. Drag down the status bar and touch the **New voicemail** notification to listen to your voicemail message.

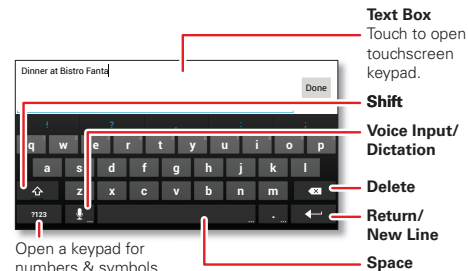
If you need to change your voicemail number, in the home screen touch  **Phone** > Menu  > **Settings** > **Voicemail settings**.


TEXT ENTRY


keys when you need them

TOUCHSCREEN KEYPAD



You can open a keypad on your screen by touching a text box.



Tip: To close the keypad without saving any text (for example, to select a different text box), touch Back .

Tip: To enter text by voice, touch  and say what you want to type.

INPUT METHODS

To select a text input method, touch Apps 
>  **Settings** > **Language & input** > **Default** > **Motorola Input** or **Swype**.

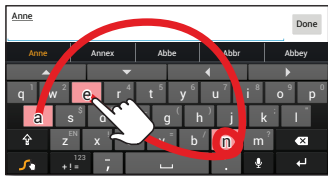
MOTOROLA INPUT

Enter text a letter at a time. As you type, your phone suggests words from your dictionary and chosen language. The phone also automatically enters apostrophes in some words, like “don’t.”

To add a word to your dictionary, touch the word, then select **+ add to dictionary**.

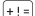
SWYPE™

Enter words with one continuous motion. Just drag your finger over the letters in the word.






To enter a word, just trace a path through the letters. To capitalize, go above the keypad. For double letters, circle the letter.

Tips:

- To enter apostrophes in common words (like “I’ll”), drag through the **n** as though it was an apostrophe.
- To enter other punctuation, numbers, or symbols, touch Symbols .
- To correct a word, *double-touch* it (tap twice, quickly). Swype shows a small menu of other word options. Swype might also show a menu if it can’t guess your word.
- If Swype doesn’t know a word, you can still touch the letter keys to enter it. Swype remembers, so next time you can just drag over the letters.


TYPING TIPS

To...	
Enter one capital letter	Touch Shift  .
Enter only capital letters	Touch and hold Shift  . Touch again to revert to lowercase.
Move the text entry cursor	Touch the text where you want the cursor to go.

To...	
Select text	Touch and hold or double-touch text to select it. Tabs mark the boundaries of the selected text. Drag the tabs to select the text you want.
Cut or Copy selected text	Touch icons at the top of the screen to Cut or Copy selected text. In a landscape display, touch Edit > Cut or Copy .
Paste cut or copied text at cursor location	Touch the Paste icon at the top of the screen. In a landscape display, touch Edit > Paste .
Delete character to left of cursor	Touch Delete  (hold to delete more).

TEXT INPUT SETTINGS


Find it: Apps  >  **Settings** > **Language & input**

- To change the language for your phone and touchscreen keypad, touch **Locale**.
- To change the default text input method, touch **Default**.
- To change text input settings, touch  next to **Motorola Input** or **Swype**.



SOCIAL NETWORKING

my life, your life



BROWSER ACCESS TO SOCIAL SITES

You can use the  **Browser** to track your social networking accounts on sites like Google+, Facebook®, Twitter, and LinkedIn. If you don't have accounts on these sites, visit their websites to set them up.

SOCIAL NETWORKING APPS

Many social networks offer dedicated apps that you can install on your phone. You can also download social networking apps from the Google Play™ Store by touching Apps  >  **Play Store**.









SYNC ACCOUNTS WITH YOUR PHONE

When you log in to a social networking account on your phone, you may be prompted to sync account contacts, pictures, and status with your  **People** app. You can accept or decline to sync. You can change your sync settings at any time by touching Menu  > **Settings** in the social networking app.

TIPS & TRICKS



a few handy hints

GENERAL TIPS











- Screen brightness changes as your phone senses the current lighting conditions.
- To see recently dialed numbers, touch  **Phone** > **Recent**.
- To sleep/wake your phone, press the Power key.
- To set screen timeout, touch Apps  >  **Settings** > **Display** > **Sleep**.
- To search, touch Search . To voice search, touch and hold Search .
- To automate everyday tasks, touch Apps  >  **Smart Actions**.
- To see the most recent apps you've used, touch Recent apps .
- To change a shortcut in the favorites tray at the bottom of the home screen, touch and hold a shortcut, then drag it in or out of the favorites tray.
- To turn sound on/off, press and hold the Power key, then touch a sound setting.
- To turn airplane mode on/off, press and hold the Power key, then touch **Airplane mode**.





BATTERY LIFE

Your phone is like a small computer, giving you a lot of information and apps, at blazing fast speeds, with a touch display! Depending on what you use, that can take a lot of power.

To start getting the most out of your battery, touch Apps  >  **Settings** > **Battery**. This shows you what's using the most battery power.

To save even more battery life between charges, try these:

- To help minimize battery use, touch Apps  >  **Smart Actions**. Check out the sample rules that enable battery savings: **Nighttime Battery Saver**, and **Battery Extender**.
- Turn off background data transfers: Touch Apps  >  **Settings** > **Data usage** > Menu  > **Restrict background data**.
- Turn off Wi-Fi and Bluetooth™ power when not in use: Touch Apps  >  **Settings**, then touch the switch next to **Wi-Fi** or **Bluetooth** to turn them .
- Reduce recording or watching videos, listening to music, or taking pictures.
- Remove widgets that stream information to your home screen, like news or weather.
- Reduce GPS use: Touch Apps  >  **Settings** > **Location services**, and uncheck **GPS satellites**.

- Reduce display brightness: Touch Apps  >  **Settings** > **Display** > **Brightness** > *(dimmer setting)*.
- Reduce display timeout delay: Touch Apps  >  **Settings** > **Display** > **Sleep** > *(shorter setting)*.
- Remove unused online accounts that you registered ("**MANAGE ACCOUNTS**" on page 49).

DIGITAL LIVING

connect and enjoy

HD VIEWING

You can create your own HD videos (see “**HD VIDEOS**” on page 32) to view on your HDTV or monitor.



- 1 Connect a micro HDMI™ cable (sold separately) from the HDMI port on your phone (see “**YOUR PHONE**” on page 2) to an HDMI port on the HDTV or monitor.
- 2 Adjust the viewable area on the HDTV screen by touching Apps (⋮) > ⚙️ **Settings** > **Display** > **Overscan**.

MIRROR MODE

Connect your phone to your HDTV, monitor, or projector so you can view and interact with your phone on the big screen. Show off your photos, videos, and downloaded movies. Enjoy the big screen for gaming, movies, the web, and more. Just connect your phone to an HDTV or monitor using a micro HDMI™ cable (sold separately). Everything you see on your display will appear on the big screen, as well.



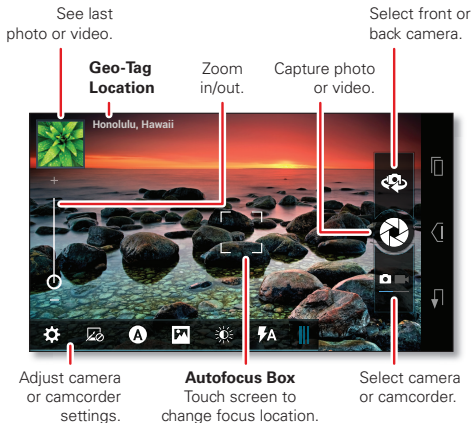
PHOTOS & VIDEOS

see it, capture it, share it!






QUICK START: CAMERA

Find it: Apps (⋮) > 📷 **Camera**

Tip: When the phone is locked, touch 🔒 and flick to 📷 **Camera**.




TIPS & TRICKS


- **Zoom:** Press the volume keys to zoom in and out on the viewfinder image.
- **Focus and flash:** To choose an off-center focus point, touch a spot in the viewfinder before you take the picture. A green square marks the focus point, and you can then touch  to take the picture.
- **MicroSD memory card:** Photos and videos are stored in your phone memory unless you open the viewfinder and touch  > **Storage Location** > **SD card**.
- **Text a video:** To send a video in a text message, first set the video quality: Touch  to switch to the camcorder, then, touch  > **Video Resolution** > **QVGA**. After you record the video, touch its thumbnail, then touch  > **Text Messaging**.




TAKE PHOTOS

Find it: Apps  >  **Camera**

Touch  to **take** a photo.




Your phone stores the photo in the  **Gallery**, and shows a thumbnail image in the upper left corner. To **see** the photo, touch the thumbnail. Then:




- To **show** the photo on a DLNA media device (like a DLNA-certified HDTV, computer, or monitor), touch .

- To **share** the photo in a message or post it online, touch .
- To **delete** the photo, touch .
- To **set** the photo as a contact photo or wallpaper, **print, edit**, or do more with it, touch Menu .




CAMERA SETTINGS

Tip: If the camera toolbar is closed, drag the tab in the lower-left corner of the viewfinder to see it.


Options	
 Settings	<ul style="list-style-type: none">• Widescreen (6MP or 8MP photo resolution)• Volume Key Function (use volume keys to zoom)• Geo-tag (auto location information)• Storage Location (phone or microSD memory card)• Shutter Tone
 Effects	Set a photo effect: Normal, Black & White, Negative , and more.
 Scenes	Set the type of photo you want to take: Auto, Portrait, Landscape , and more.


Options	
 Modes	Set to Single shot , Panorama , Multi-shot , or Timer .
 Exposure	Select an exposure setting.
 Flash	Set Flash On , Flash Off , or Auto Flash .

RECORD VIDEOS





Find it: Apps  >  **Camera**, then touch  to switch to camcorder

Touch  to **start** and **stop** video recording.

Your phone stores the video in the  **Gallery**, and shows a thumbnail image in the upper left corner. To **see** the video, touch the thumbnail. Then:

- To **play** the video, touch .



Tip: To see the controls when a video is playing, touch the screen.

- To **play** the video on a DLNA media device (like a DLNA-certified HDTV, computer, or monitor), touch .
- To **share** the video in a message or post it online, touch .
- To **delete** the video, touch .
- To see other video options, touch Menu .

HD VIDEOS



You can capture HD-quality videos to watch on an HDTV or monitor.





To record an HD-quality video, be sure to select the correct video resolution. Drag the settings tab in the lower left, then touch **Settings** > **Video Resolution** > **HD+ (1080p)** or **High Definition (720p)**.

To enhance the video quality, touch  **Effects** or  **Audio Scenes**.

CAMCORDER SETTINGS




Tip: If the camera toolbar is closed, drag the tab in the lower-left corner of the viewfinder to see it.

Options	
 Settings	<ul style="list-style-type: none"> Video Resolution (1080p, 720p, DVD, VGA, or QVGA) Volume Key Function (use volume keys to zoom) Geo-tag (auto location information) Storage Location (phone or microSD memory card) Shutter Tone
 Effects	Set a video effect: Normal , Black & White , Negative , and more.

Options	
 Audio Scenes	Set sound recording options: Stereo, Wind Reduction, Concert, Balanced, or Front Facing.
 Modes	Set to Normal Video, Video Message, or Time Lapse.
 Exposure	Select an exposure setting.
 Light	Set Light On or Light Off.

EDIT, SHARE, OR DELETE PHOTOS & VIDEOS





Find it: Apps  >  **Gallery**


- **View, share, or delete:** Touch a thumbnail to open it, then touch  to share or  to delete. Touch Menu  to edit or see other options.

Tip: To select multiple files, open a folder, touch and hold a photo, then touch others.

- **Zoom:** Open a photo, then drag two fingers apart or together on the touchscreen.

Tip: Turn your phone sideways for a widescreen view.

- **Wallpaper or contact photo:** Open a picture, then touch Menu  > **Set picture as.**
- **Edit:** Open a picture, then touch Menu  > **Edit.**
- **Slideshow:** Open a folder, then touch  at the top. To stop the slideshow, touch the display or Back .



Tip: To show the slideshow on a television or other device, touch .

To copy photos to/from a computer, go to “**MEMORY CARD & FILE MANAGEMENT**” on page 48.

SCREEN CAPTURE

Sometimes a picture speaks louder than words. Share a screen capture of your favorite playlist, or your new high score. Forward a screen capture of a friend's contact information. If you can see it on your phone, you can share it with your friends.

To capture your phone's screen image, press and hold both the Power key and down volume key for three seconds, or until you hear the camera shutter click.

To see the screen image, touch Apps  >  **Gallery** > **Screenshots.**

MOVIES

You can find and rent movies to watch on your tablet or computer:

Find it: Apps  >  **Play Movies**



To shop, rent, or watch on a computer, go to www.google.com/play and choose “Movies.”

To pay for rentals, set up your Google™ Wallet at www.google.com/wallet.

YOUTUBE™

Watch videos from YouTube users everywhere—or log into your account to share your own.

Find it: Apps (⋮) >  **YouTube**

- **Watch:** Touch **BROWSE** or  to find a video, then touch the image to play it.
- **Upload:** Touch **ACCOUNT**, choose your Google™ account, then touch .

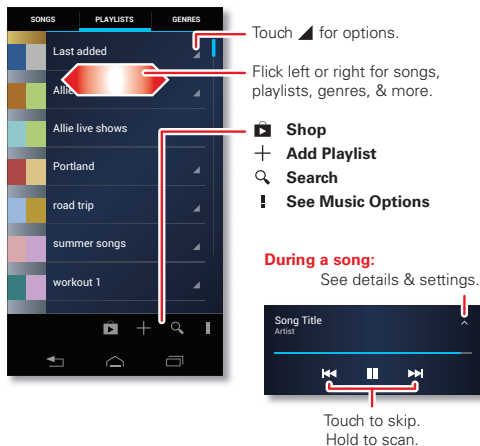
Tip: A YouTube account lets you subscribe to YouTube's premium content channels, and have your favorite channels synced to your phone for HD playback anytime. For optimal content sync, your phone should be plugged into a charger and have a Wi-Fi connection.






MUSIC

when music is what you need...


QUICK START: MUSIC

Find it: Apps (⋮) >  **Play Music**






- **Go back:** When you open a song or artist list, touch  in the top left to go back.
- **Set shuffle or repeat:** During a song, touch  to show shuffle  and repeat  at the bottom. Touch  once to repeat the current song list, or twice to repeat only the current song.
- **Adjust volume:** Press the volume keys.
- **During a flight:** Press and hold the Power key, then touch **Airplane mode** to turn off all your network and wireless connections and listen to music during a flight.
- **Music file types:** Your phone can play MP3, M4A, AAC, AAC+, MIDI, and WAV file types.

TIPS & TRICKS

- **Hide the music player:** To use another app while your music plays, touch Home . To return to the music player, flick down the status bar and touch the song title.

Tip: Control music playback from the home screen by adding the **Google Play Music** widget.

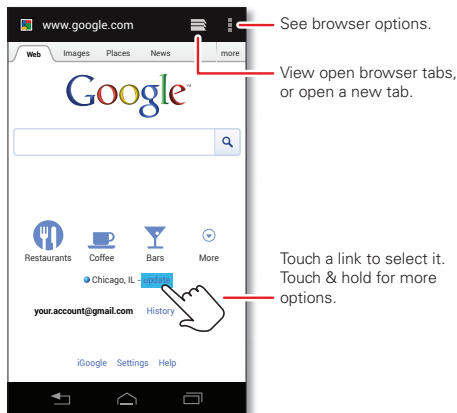
- **Playlists:** Touch and hold a song in your library to add it to a playlist or show other options. To edit, delete and rename a playlist, touch and hold its name in the music library.
- **Help:** For more information, touch Apps  >  **Play Music** > Menu  > **Help**.
- **Computer:** To access your Google Play™ music from a computer, visit www.google.com/music.

WEB

surf the web with your phone

QUICK START: BROWSER

Find it:  **Browser**



Tip: To zoom in, drag two fingers apart on the touchscreen.

CONNECT

Your phone uses the mobile phone network (over the air) or a Wi-Fi connection to automatically access the web.


Note: Your service provider may charge to surf the web or download data.

If you want to use a Wi-Fi network for Internet access, see "**WI-FI NETWORKS**" on page 41.

Note: If you can't connect, contact your service provider.


DOWNLOADS

To download files in your browser, touch a file link or touch and hold a picture to choose **Save image**.

To see the files you downloaded, touch Apps (⋮) >  **Downloads**. Touch and hold an item to open it, see details, or remove it from the list.

You can download "**APPS & UPDATES**" on page 14.

BROWSER OPTIONS

Touch Menu  to see browser options:

Options	
Refresh	Reload the web page.
Forward	Go forward through viewed web pages.
Homepage	Go to the browser homepage.
Bookmarks	See your bookmarks.
Save to bookmarks	Bookmark the web page.
Share page	Share the web page in a message or post it online.
Find on page	Search for text on the web page.
Request desktop site	Open the standard desktop website instead of the mobile device version.
Save for offline reading	Save the web page to read later.
Settings	Adjust browser settings.
Print	Print the web page.
Exit	Close the browser app.


PERSONALIZE

add your personal touch


WIDGETS

ADD WIDGETS


Fill your home screen with widgets—make it yours.

Touch Apps  > **Widgets**, touch and hold a widget, then drag it to a spot on a home screen page.

SET UP WIDGETS

You can customize some widgets. Touch a widget to open it, then touch Menu .

Your home screen may already have these widgets:

- **Favorite People:** Quickly call, text, or email your favorite contacts. To add people to your Favorites list, see “**FAVORITES**” on page 22.
- **Calendar:** Sync your calendars and review upcoming events at a glance with the scrollable calendar widget. To add calendar events, see “**CALENDAR**” on page 45.
- **My music:** Set this widget to an artist, album, song, playlist, genre, or just touch Menu  > **Shuffle all**. There’s more about “**MUSIC**” on page 34.
- **Weather:** See weather reports for your current location, and for any other locations you specify.

SHORTCUTS

To add app shortcuts to the home screen, touch Apps (⋮), touch and hold an app, then drag it to a spot on a home screen page.

Tip: To change a shortcut in the favorites tray at the bottom of the home screen, touch and hold a shortcut, then drag it in or out of the favorites tray.

To create a folder of shortcuts on your home screen, touch and hold a shortcut, then drag it on top of another shortcut. To add more shortcuts, drag them onto the folder. To name the folder, touch it and enter a name at the bottom.

RINGTONES

- To personalize your ringtones, touch Apps (⋮) > ⚙ **Settings** > **Sound** > **Phone ringtone** or **Default notification**.
- To make your phone ring and vibrate, touch Apps (⋮) > ⚙ **Settings** > **Sound** > **Vibrate and ring**.
- To silence your phone and make it vibrate for incoming calls, touch the down volume key one or more times until the phone vibrates and you see }|{ in the status bar.
- To set a personal ringtone for a contact, touch Apps (⋮) > 👤 **People** > *contact* > Menu ⋮ > **Set ringtone**.

WALLPAPER

To apply a new wallpaper, touch and hold an empty spot on your home screen, then choose a wallpaper image from **Gallery**, **Live wallpapers**, or **Wallpapers**.

Tip: To improve battery life, use standard wallpapers with darker colors. Live wallpapers and wallpapers with bright colors use more battery power.

SOUNDS

- To set volume for media, ringtones, notifications, and alarms, touch Apps (⋮) > ⚙ **Settings** > **Sound** > **Volumes**.
- To play dial pad tones, touch Apps (⋮) > ⚙ **Settings** > **Sound** > **Dial pad touch tones**.
- To play sounds for screen selections, touch Apps (⋮) > ⚙ **Settings** > **Sound** > **Touch sounds**.
- To customize the sound settings for media and videos, touch Apps (⋮) > ⚙ **Settings** > **Sound** > **Speaker** (internal) or **Wired stereo devices** (connected external speakers).

DISPLAY SETTINGS

- To set display brightness, touch Apps (⋮) > ⚙ **Settings** > **Display** > **Brightness**.
- To set orientation, touch Apps (⋮) > ⚙ **Settings** > **Display** > **Auto-rotate screen**.

- To set the font size for menus and settings, touch Apps (⋮) > ⚙️ **Settings** > **Display** > **Font size**.

Tip: To improve battery life, reduce your display brightness. A brighter screen uses more battery power.

DATE & TIME

Set date, time, time zone, and formats:

Find it: Apps (⋮) > ⚙️ **Settings** > **Date & time**

LANGUAGE & REGION

Set your menu language and region:

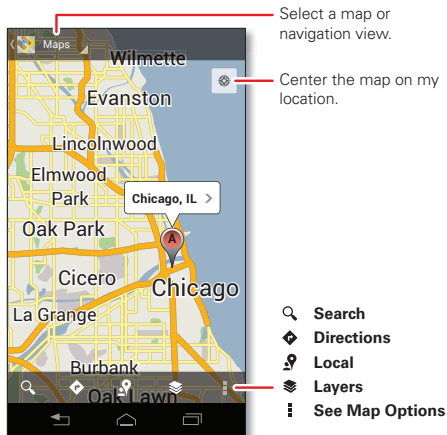
Find it: Apps (⋮) > ⚙️ **Settings** > **Language & input** > **Locale**

LOCATION

where you are, where you're going


GOOGLE MAPS™



Find it: Apps (⋮) > 🗺️ **Maps**



Note: The map image you see may be a little different.

Google Maps offers powerful, user-friendly mapping technology and local business information—including business locations, contact information, and driving directions.

For help, touch Menu  > **Help**.

Tip: Want to know what's in your immediate area? Try Google Local™. Touch Apps  >  **Maps**, touch the **Maps** view control in the upper-left, then touch **Local** to see listings for restaurants, cafes, bars, and more based on your current location.

GOOGLE MAPS NAVIGATION BETA™

Google Maps Navigation Beta is a complete GPS navigation system with voice guidance that shows you the way.

Find it: Apps  >  **Maps** > **Maps** > **Navigation**

Follow the prompts to speak or type your destination.

For more information, go to www.google.com/mobile/navigation.




GOOGLE LATITUDE™

See where your friends and family are on Google Maps. Plan to meet up, check that your parents got home safely, or just stay in touch.

Don't worry, your location is not shared unless you agree to it. You need to join Google Latitude, and then invite

your friends to view your location or accept their invitations.

To get started, touch Apps  >  **Maps** > **Maps** > **Join Latitude**. Then:

- To **start** Google Latitude, touch Apps  >  **Maps** > **Maps** > **Latitude**.
- To **add** friends, touch **FRIENDS LIST** > .
- To **remove** friends, touch **FRIENDS LIST**, touch a friend in your list, then touch **Remove this friend**.
- To **turn off** Google Latitude, touch your Latitude name tag in map view, then touch **Edit privacy settings** > **Sign out of Latitude**.

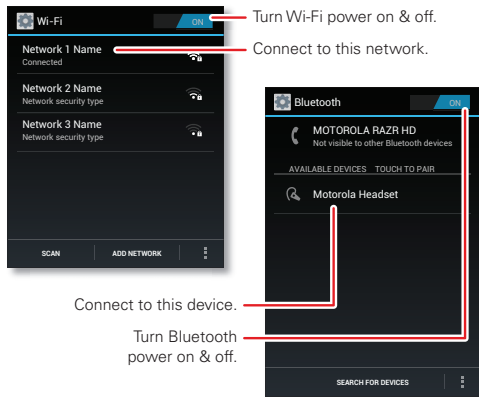
WIRELESS

lose the wires

QUICK START: WIRELESS

Connect your phone to fast Wi-Fi networks or Bluetooth™ devices.

To connect, touch Apps (⋮) > ⚙️ **Settings** > **Wi-Fi** or **Bluetooth**.




WI-FI NETWORKS

TURN WI-FI POWER ON OR OFF

Touch Apps (⋮) > ⚙️ **Settings**, then touch the **Wi-Fi** power switch to turn it **ON** or **OFF**.

Note: To extend battery life, turn off Wi-Fi power when not in use.

WI-FI SEARCH & CONNECT

When Wi-Fi is **on**, the Wi-Fi in range indicator  appears in the status bar when a network is available. Drag down the status bar and touch the **Wi-Fi networks available** notification to select and connect to a network.

To search for a network when Wi-Fi is **off**:

- 1 Touch Apps (⋮) > ⚙️ **Settings** > **Wi-Fi**.
- 2 Touch the **Wi-Fi** power switch to turn it **ON** and scan. Your phone lists the networks it finds within range.

Tip: To see your phone's MAC address or other Wi-Fi details, touch Menu (⋮) > **Advanced**.

- 3 Touch a network to connect. If necessary, enter **Network SSID**, **Security**, and **Password**, and touch **Connect**.

When your phone is connected to the network, the Wi-Fi connected indicator  appears in the status bar.

Tip: When you are in range and Wi-Fi power is on, you will automatically reconnect to available networks you've connected to before.



WI-FI HOTSPOT

You can make your phone a Wi-Fi hotspot to provide portable, convenient Internet access to other Wi-Fi enabled devices.

Caution: This application significantly impacts battery life. You may want to run this application with the charger connected.

Note: You need to subscribe to Wi-Fi hotspot service to use this feature. Contact your service provider.

To set up your phone as a Wi-Fi hotspot:

- 1 Touch Apps  >  **Settings** > **Tethering & Mobile Hotspot** > **Mobile Hotspot** to turn on the hotspot.
- 2 Touch **Mobile Hotspot settings** > **Configure Mobile Hotspot** to change hotspot security and configuration settings:
 - **Network SSID:** Enter a unique name for your hotspot and touch **Next**.
 - **Security:** Select the type of security you want: **WEP**, **WPA**, or **WPA2**. Enter a unique password. Other users can access your Wi-Fi hotspot only if they enter the correct password.

Note: Keep it secure. To protect your phone and hotspot from unauthorized access, it is strongly recommended that you set up hotspot **Security (WPA2)** is the most secure), including password.

- **Broadcast Channel:** Select a channel that minimizes potential interference. You may need to try different channels after your hotspot is active for a time.

- 3 Touch **Save** when the settings are complete.

When your Wi-Fi hotspot is active, other Wi-Fi enabled devices can connect by entering your hotspot's **SSID**, selecting a **Security** type, and entering the correct **Password**.

WI-FI MODES

For those who like to get a bit more technical, your phone supports the following Wi-Fi modes: 802.11 b, g, n.

BLUETOOTH™ HANDSFREE DEVICES

TURN BLUETOOTH POWER ON OR OFF

Touch Apps  >  **Settings**, then touch the **Bluetooth** power switch to turn it  or .

Note: To extend battery life, turn off Bluetooth power when not in use.




CONNECT NEW BLUETOOTH DEVICES

Note: This feature requires an optional accessory.

To connect with a new Bluetooth headset or other device, you need to pair with it. You only need to do this once for each device—to connect again, just turn on the device.

- 1 Make sure the Bluetooth device you are pairing with is in discoverable mode.

Note: Refer to the guide that came with the Bluetooth device for details.

- 2 Touch Apps  >  **Settings** > **Bluetooth**.
- 3 Touch the **Bluetooth** power switch to turn it  and scan. If Bluetooth power is already on, touch **SEARCH FOR DEVICES**.
- 4 Touch a device to connect.
- 5 If necessary, touch **OK**, or enter the device passkey (like **0000**) to connect to the device. When the device is connected, the Bluetooth connected indicator  appears in the status bar.

Note: Using a mobile device or accessory while driving may cause distraction and may be illegal. Always obey the laws and drive safely.

RECONNECT DEVICES

To automatically reconnect your phone with a paired device, simply turn on the device.

To manually reconnect your phone with a paired device, touch the device name in the **AVAILABLE DEVICES** list.

DISCONNECT DEVICES

To automatically disconnect your phone from a paired device, simply turn off the device.

To manually disconnect your phone from a paired device, touch the device name in the devices list, then touch **OK**.



CHANGE DEVICE NAME




Touch Apps  >  **Settings** > **Bluetooth**, turn Bluetooth power on, then touch Menu  > **Rename phone**. Enter a name and touch **OK**.

NFC

Near Field Communication technology lets you instantly share content (like web links, contacts, and photos), information, and more, by touching the back of your phone to another NFC-enabled device.

ACTIVATE NFC & ANDROID BEAM

To activate NFC on your phone, touch Apps  >  **Settings** > **More** > **NFC**. Make sure the checkbox is checked.

To activate Android Beam, touch Apps  >  **Settings** > **More** > **Android Beam**, then touch the power switch to turn it .

SHARE WITH ANDROID BEAM

Use Android Beam to share content on your phone with another NFC-enabled phone or tablet.

Note: The other device must support NFC too.

- 1 Open the screen that contains what you want to share—map page, browser page, photo, whatever.
- 2 Touch the back of your phone to the back of the other device.
When the devices connect, you'll see **Touch to Beam** on your phone.

- 3 Touch your screen to share your content.

RECEIVE WITH NFC

Receive web links, e-coupons, brochures, maps and more from an NFC tag. Look for the NFC logo on posters, signs, store displays and other areas. Just touch the back of your phone to the logo to receive its tag information.

BLUETOOTH & WI-FI ONE-TOUCH SETUP

Just touch your phone to an NFC-enabled Bluetooth device or Wi-Fi access point to automatically pair or connect with the device.

MOBILE PAYMENT

You can use Google™ Wallet or another secure payment app to pay for your purchase (where available).

Look for the NFC logo to confirm that you can make a mobile payment. Touch the back your phone to the payment device to pay for your purchase.

SECURITY

Mobile payments, wireless connections, and content sharing all demand security:

- **Range:** NFC only works over a short range (about 4 cm/1.5 inches), so it's unlikely you'll connect by mistake—if you did, you would still have to accept the connection to send or receive information.
- **Encryption:** Your phone uses the latest security, encryption, and authentication features to protect your personal information for mobile payments and content sharing.

TOOLS


stay on top of things

CALENDAR


Managing your schedule has never been easier. The calendar automatically shows calendar events from your web-based Google™ account, and syncs events that you enter from your phone or web browser.

Find it: Apps  >  **Calendar**

You can view your calendar in different ways: Touch the date, then touch **Day**, **Week**, **Month**, or **Agenda**. When you highlight an event, more details appear.

Tip: To add a calendar widget to your home screen, touch Apps  > **Widgets**, touch and hold **Calendar**, then drag it to a spot on the home screen.

ADD CALENDAR EVENTS

From any view, touch Menu  > **New event**. Enter the event start time and other details. You can even set a reminder so you don't forget about the event. (When you set the reminder time to **0 minutes**, it plays at the event start time.)


Tip: Reminders will play only if you've selected a notification ringtone (see "**RINGTONES**" on page 38).

When you finish entering event details, touch **Save**.

MANAGE CALENDAR EVENTS



To edit an event, touch and hold it, then touch **Edit event**. When you're done, touch **Save**.

To delete an event, touch and hold it, then touch **Delete event**.



To go to today, touch .

CALCULATOR

Find it: Apps  >  **Calculator**

To switch between basic and advanced functions, touch Menu  > **Advanced panel** or **Basic panel**. To clear history, touch Menu  > **Clear history**.

ALARM CLOCK

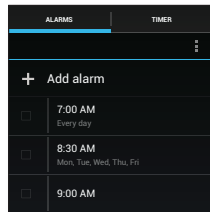
Find it: Apps  >  **Alarm & Timer**

To turn on an alarm, touch the check box.

When an alarm sounds, select **Dismiss** to turn it off or touch the screen to snooze for five minutes.

To add an alarm, touch **+**, then enter alarm details.

To enable or disable an alarm, touch the check box.







ACCESSIBILITY

See, hear, speak, feel, and use. Accessibility features are there for everyone, helping to make things easier.

Note: For general information, accessories, and more, visit www.motorola.com/accessibility

VOICE RECOGNITION

Use your voice—just touch and speak.




- **Dialing and commands:** Touch Apps  >  **Voice Commands**. To dial, say “**Call**” and then a contact name or phone number. Or, say a command from the list shown, like “**Send Message**” or “**Go To**”.
- **Search:** Touch and hold Search , then say what you want to search for, like “Motorola accessories”.
- **Text entry:** Touch a text entry field to open the touchscreen keypad. Touch , then say what you want to type.

Tip: Speak naturally, but clearly. Use the microphone in a similar way to a speakerphone, so no need to shout or hold the phone close to your mouth.

To change your voice settings, see “**VOICE SETTINGS**” on page 47.

TALKBACK (VOICE READOUTS)



Your navigation and selections, read out loud.

To turn on TalkBack voice readouts, touch Apps  >  **Settings** > **Accessibility** > **TalkBack**, then touch the power switch to turn it .

To use TalkBack voice readouts:





- **Menus and screens:** In menus and screens, touch an item to select or open it. The item is read out loud, or your action is described.
- **Dialer & text entry:** As you type, each number or letter is read out loud.

Tip: Navigate through your apps and menus to hear how TalkBack voice readouts work on your phone.

To change TalkBack settings, touch Apps  >  **Settings** > **Accessibility** > **TalkBack** > **SETTINGS**.






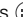

CALLER ID

When you want to **hear** who's calling:

- **Read out loud:** Have your caller announced—touch  **Phone** > Menu  > **Settings** > **Caller ID Readout**.
- **Ringtones:** Assign a unique ringtone to a contact—touch  **People**, touch a contact, then touch Menu  > **Set ringtone**.

VOICE SETTINGS

Personalize your voice settings:

- **Voice search:** Touch Apps  >  **Settings** > **Language & input** > **Voice Search**. From here, you can set options like language, personalized voice recognition, and censorship.
- **Voice typing:** Touch Apps  >  **Settings** > **Language & input** > **Language & input**, then touch  next to **Google voice typing**. From here, you can select input language and block offensive words.
- **Text-to-speech:** Touch Apps  >  **Settings** > **Language & input** > **Text-to-speech output**. From here, you can set speed options and listen to a spoken text example.

VOLUME & VIBRATE

Choose volume and vibrate settings that work for you.



Touch Apps  >  **Settings** > **Sound**:

- **Volume:** Touch **Volumes** and use the sliders.
- **Vibrate:** Touch **Vibrate and ring** to feel your phone ring.



ZOOM

Get a closer look. To zoom in, touch the screen with two fingers and then slide them apart. To zoom out, slide your fingers together.

DISPLAY BRIGHTNESS

Set a brightness level that works for you. Touch Apps  >  **Settings** > **Display** > **Adjust brightness level**. Make sure that **Automatic brightness** is unchecked so you can set your own level.





TOUCHSCREEN & KEYS

All these touch features are great, and sometimes it's nice to hear or feel your touches too. Touch Apps  >  **Settings** > **Sound**:

- **Touchscreen:** To hear screen touches (click), select **Touch sounds**.
- **Keys:** To feel key touches (vibrate), select **Vibrate on touch**.
- **Screen lock:** To hear when you lock/unlock the screen (click), select **Screen lock sound**.

MESSAGES


From a simple text message to IM, email, and more. Create, send, and receive them all on your phone.


And to make text entry even easier, you can use features like auto-correct, auto-punctuate, and auto-capitalization—touch Apps  >  **Settings** > **Language & input**, then touch  next to **Motorola input**. Of course if you don't want to type at all, then use your voice—touch  on the touchscreen keypad.

APPS

Want more? No problem. Google Play™ Store provides access to hundreds of thousands of apps, and many provide useful accessibility features.

Find it: Apps  >  **Play Store**

Select a category or touch Search  to find the app you want.


Tip: Choose your apps carefully, from trusted sites, like  **Play Store**, as some may impact your phone's performance.

MANAGEMENT

stay in control

MEMORY CARD & FILE MANAGEMENT

Your photos, videos, and other files are automatically stored in your phone's internal memory. You can set individual applications (camera, camcorder, etc.) to store files on a microSD memory card. To install a microSD card, go to “**ASSEMBLE & CHARGE**” on page 3.

Tip: To move media from internal memory to a microSD card, touch Apps  >  **Settings** > **Storage** > **Manage internal storage**.

DELETE OR SHARE FILES ON YOUR PHONE



Find it: Apps  >  **Files** > **Device storage** or **SD card**

Touch a file or folder to open, then touch and hold a file to **Delete** or **Share**.

REMOVE OR ERASE A MICROSD CARD

Note: Do not remove a microSD card while your phone is using it or writing files on it.

Before you remove or erase a microSD card you need to unmount it. Touch Apps  >  **Settings** > **Storage** > **Unmount SD card**.


To erase a microSD card, touch Apps  >  **Settings** > **Storage** > **Erase SD card**.

Warning: All data on the microSD card will be deleted.

USB CONNECTION

You can connect your phone to a computer with a USB cable.

Note: The first time you use a USB connection, your computer may indicate that drivers are being installed. Follow any prompts you see to complete the installation. This may take a few minutes.

- 1 With the home screen showing, connect a Motorola micro USB data cable from your phone's micro USB port to a USB port on your computer. Your phone should show  in the status bar.



Note: Make sure to connect the phone to a high power USB port. Typically, these are located directly on your computer.

- 2 Your phone and microSD memory card appear as two separate removable disks on your computer.

Drag and drop files between your computer and the phone or microSD card folders. When you're done, use "Safely Remove Hardware" before disconnecting the USB cable.


Note: You can't use files on the microSD card while your phone is connected to the computer.

MANAGE ACCOUNTS

To **add** email or other accounts on your phone, touch Apps  >  **Settings** > **Accounts & sync** > **ADD ACCOUNT**.

Add an account by touching it. Enter your user name and password, then follow the prompts to set up the account.

To **edit** an account, touch *account name* > **Account settings**.

To **delete** an account, touch *account name* > Menu  > **Remove account**.

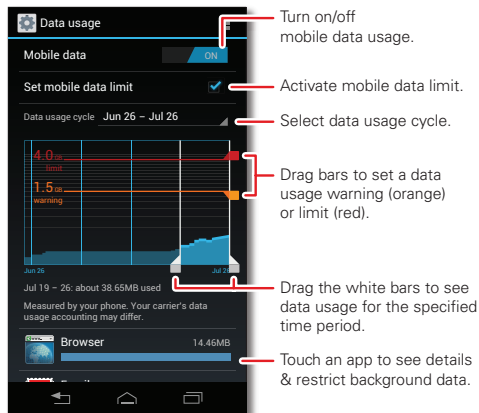
Note: You can't delete the Google™ account you used or created when you set up your phone.

DATA USAGE




You can track the amount of data uploaded and downloaded by your phone, and set a limit on your monthly data usage to avoid overage charges from your service provider.

Note: Usage information is provided to help you manage your phone. This may not match the amounts charged by your service provider, as they're not measured in the same way.



Find it: Apps  >  **Settings** > **Data usage**





The data usage app shows information and settings for data transferred over your service provider's mobile network.

Tip: You can also track Wi-Fi and ethernet data usage in separate tabs, by touching Apps  >  **Settings** > **Data usage** > Menu  > **Show Wi-Fi usage** or **Show Ethernet usage**.

SET A DATA USAGE WARNING

Touch Apps  >  **Settings** > **Data usage**, then drag the right side of the orange bar up/down to set the data warning level. You'll receive a notification when your data usage reaches the specified level.



SET A DATA USAGE LIMIT

Touch Apps  >  **Settings** > **Data usage** > **Set mobile data limit**, then drag the right side of the red bar up/down to set the data usage limit.

When you reach your data usage limit, mobile data is turned off automatically and many of your phone's features won't work correctly. You'll receive a notification when mobile data is turned off.




RESTRICT BACKGROUND DATA USAGE BY APP

Some apps transfer data in the background, when you're not using them. You can restrict background data usage for individual apps to help reduce your overall data usage.

Touch Apps  >  **Settings** > **Data usage**, and scroll down to see which apps are transferring data over the mobile network. Touch an app, then touch **Restrict background data**.


RESTRICT ALL BACKGROUND DATA

You can restrict background data for all apps across all available networks (mobile, Wi-Fi, and Ethernet).

Find it: Apps  >  **Settings** > **Data usage** > Menu  > **Restrict background data**.

Caution: Restricting all background data can cause some features to stop working altogether.

WIRELESS MANAGER

Find it: Apps  >  **Settings**, then go to the **WIRELESS & NETWORKS** section

Manage all your wireless connections: Wi-Fi, Bluetooth™, mobile data, airplane mode, and mobile hotspot.



AIRPLANE MODE

Use airplane mode to turn all your wireless connections off—useful when flying. Press and hold the Power key, then touch **Airplane mode**.

Note: When you select airplane mode, all wireless services are disabled. You can then turn Wi-Fi and/or Bluetooth back on, if permitted by your airline. Other wireless voice and data services (such as calls and text messages) remain off in airplane mode. Emergency calls to your region's emergency number can still be made.

NETWORK

You should not need to change any network settings. Contact your service provider for help.

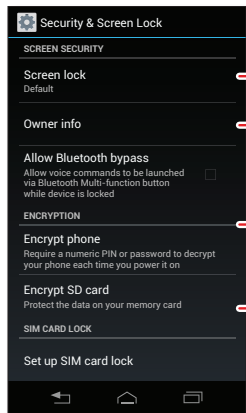
Touch Apps  >  **Settings** > **More...** > **Mobile networks** to see network settings options.

SECURITY

help keep your phone safe

QUICK START: SECURITY

Find it: Apps  >  **Settings** > **Security & Screen Lock**






Select & set up a screen lock method.

Enter text to appear on the lock screen.

Encrypt the data stored on your phone or microSD memory card.

SCREEN LOCK

You can make the touchscreen lock when it goes to sleep. Touch Apps  >  **Settings** > **Security & Screen Lock** > **Screen lock**, then select the lock type:

- **None:** Turn off the screen lock.
- **Default:** Flick  to the right to unlock.
- **Face Unlock:** Look at your phone to unlock it.
- **Pattern:** Draw a pattern to unlock.
- **PIN:** Enter digits to unlock.
- **Password:** Enter letters, digits, or symbols to unlock.

Note: You can make emergency calls on a locked phone (see “**EMERGENCY CALLS**” on page 19). A locked phone still rings, **but you need to unlock it to answer.**

FACE UNLOCK

Use face recognition to unlock your phone.



Note: This feature is less secure than a pattern, PIN, or password.

To get started, touch Apps  >  **Settings** > **Security & Screen Lock** > **Screen lock** > **Face Unlock** > **Set it up**.

Follow the prompts and look at the front camera lens. When face capture is complete, choose a pattern or PIN (for backup and to change the lock setting).

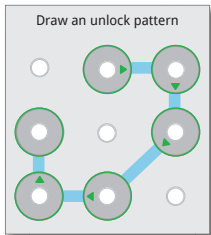
To unlock the phone, flick  to the right and look at the front camera lens.

PATTERN

To set the lock pattern, touch Apps  >  **Settings**
> **Security & Screen Lock**
> **Screen lock** > **Pattern**.

Follow the instructions to draw your lock pattern.

When prompted, draw the pattern to unlock the phone.



PIN

To set a PIN, touch Apps  >  **Settings**
> **Security & Screen Lock** > **Screen lock**
> **PIN**.

Enter a numeric PIN, then confirm it.

When prompted, enter the PIN to unlock the phone.



PASSWORD

To set the password, touch Apps  >  **Settings**
> **Security & Screen Lock** > **Screen lock** > **Password**.

Enter a password (up to eight characters), then confirm it.

When prompted, enter the password to unlock the phone.

PERSONALIZE YOUR LOCK SCREEN

To change your timeout, touch Apps  >  **Settings**
> **Display** > **Sleep**. If you don't touch the screen or press any keys for the amount of time you select, the screen locks automatically.

LOCK & UNLOCK

To lock your phone screen, do any one of these:

- Press the Power key.
- Let the screen time out (don't press anything).
- Switch off the power.

To unlock your phone screen, press the Power key to wake the touchscreen display, then perform the unlock procedure required by the lock screen (slide, face unlock, pattern, PIN, or password).

CAN'T UNLOCK YOUR PHONE?

Face unlock: If your phone doesn't recognize your face, you'll be prompted to enter your backup pattern or PIN code to unlock it.

Pattern: If you make five unsuccessful attempts to enter your lock pattern, you can touch **Forgot pattern** and enter the Gmail™ user name and password you set up as your main Google™ account when you registered your device. You will then be able to create a new pattern and unlock your device.

PIN or password: If you forget your PIN or password, you can enter the Google™ Gmail™ user name and password you set up when you registered your device. You will then be able to create a new PIN or password and unlock your device.

If you don't have a Google™ account on your smartphone, contact your service provider to have your device factory reset.


Warning: A factory reset will delete all data on your phone.

ENCRYPT YOUR PHONE

Caution: If you forget your encryption code, you cannot recover the data stored on your phone or microSD memory card. Encrypting your files can take an hour or more. Leave your phone plugged in, and be careful not to interrupt the process.

Encryption protects the accounts, settings, apps, and files on your phone, so that people cannot access them if your phone is stolen.



To encrypt your phone and require a PIN or password whenever you turn on your phone:

Find it: Apps  >  **Settings > Security & Screen Lock > Encrypt phone**

SIM LOCK



Caution: If you enter an incorrect PIN code three times, your phone locks your SIM card and asks for your PIN unlock code. Contact your service provider for your PIN unlock code.

To set a SIM card PIN that you must enter when you turn on your phone:


Find it: Apps  >  **Settings > Security & Screen Lock > Set up SIM card lock > Lock SIM card**

To set your SIM PIN, enter a 4-digit code. To change your code, choose **Change SIM PIN**.

RESTORE YOUR PHONE

If you reset or replace your phone, just log into your Google™ account to restore the contacts, events, and other details you synced with the account. To choose what syncs with the account, touch Apps  >  **Settings > Accounts & sync**, touch your Google account, and check things to sync. Please note that text messages, call logs, and items stored on your phone will not be restored. To restore your Google Play™ Store apps, see “**MANAGE & RESTORE APPS**” on page 15.

RESET

To reset your phone to factory settings and erase all the data on your phone, touch Apps (⋮) >  **Settings** > **Privacy** > **Factory data reset** > **Reset phone**.

Warning: All data on your phone will be deleted. (Nothing on the microSD memory card is deleted.)

TROUBLESHOOTING

we're here to help

CRASH RECOVERY

In the unlikely event that your phone stops responding to touches and key presses, try a forced reboot—press and hold both the Power key and the down volume key for up to 10 seconds.

SERVICE & REPAIRS

If you have questions or need assistance, we're here to help.

Go to www.motorola.com/support, where you can select from a number of customer care options. For Australia and New Zealand users, you can also contact the Motorola Customer Support Center at 1300 138 823 (Australia) or 0508 6686 7652 (New Zealand).

Battery Use & Safety

The following battery use and safety information applies to all Motorola mobile devices. If your mobile device uses a non-removable main battery (as stated in your product information), details related to handling and replacing your battery should be disregarded—the battery should only be replaced by a Motorola-approved service facility, and any attempt to remove or replace your battery may damage the product.

Important: Handle and store batteries properly to avoid injury or damage. Most battery safety issues arise from improper handling of batteries, and particularly from the continued use of damaged batteries.

DON'Ts

- **Don't disassemble, crush, puncture, shred, or otherwise attempt to change the form of your battery.**
- **Don't use tools, sharp objects, or excessive force to insert or remove the battery as this can damage the battery.**
- **Don't let the mobile device or battery come in contact with liquids.*** Liquids can get into the mobile device's circuits, leading to corrosion.
- **Don't allow the battery to touch metal objects.** If metal objects, such as jewelry, stay in prolonged contact with the battery contact points, the battery could become very hot.
- **Don't place your mobile device or battery near a heat source.*** High temperatures can cause the battery to swell, leak, or malfunction.
- **Don't dry a wet or damp battery with an appliance or heat source,** such as a hair dryer or microwave oven.

DOs

- **Do avoid leaving your mobile device in your car in high temperatures.***
- **Do avoid dropping the mobile device or battery.*** Dropping these items, especially on a hard surface, can potentially cause damage.*
- **Do contact your service provider or Motorola if your mobile device or battery has been damaged in any of the ways listed here.**

* **Note:** Always make sure that any battery, connector and compartment covers are closed and secure to avoid direct exposure of the battery to any of these conditions, even if your product information states that your **mobile device** can resist damage from these conditions.

Important: Motorola recommends you always use Motorola-branded batteries and chargers for quality assurance and safeguards. Motorola's warranty does not cover damage to the mobile device caused by non-Motorola batteries and/or chargers. To help you identify authentic Motorola batteries from non-original or counterfeit batteries (that may not have adequate safety protection), Motorola provides holograms on its batteries. You should confirm that any battery you purchase has a "Motorola Original" hologram.

If you see a message on your display such as **Invalid Battery** or

Unable to Charge, take the following steps:

- Remove the battery and inspect it to confirm that it has a "Motorola Original" hologram;
- If there is no hologram, the battery is not a Motorola battery;
- If there is a hologram, replace the battery and try charging it again;
- If the message remains, contact a Motorola authorized service center.

Warning: Use of a non-Motorola battery or charger may present a risk of fire, explosion, leakage, or other hazard.

Proper and safe battery disposal and recycling: Proper battery disposal is not only important for safety, it benefits the environment. You can recycle your used batteries in many retail or service provider locations. Additional information on proper disposal and recycling can be found at www.motorola.com/recycling

Disposal: Promptly dispose of used batteries in accordance with local regulations. Contact your local recycling center or national recycling organizations for more information on how to dispose of batteries.



Warning: Never dispose of batteries in a fire because they may explode.

Battery Charging

Notes for charging your product's battery:

- During charging, keep your battery and charger near room temperature for efficient battery charging.
- New batteries are not fully charged.
- New batteries or batteries stored for a long time may take more time to charge.
- Motorola batteries and charging systems have circuitry that protects the battery from damage from overcharging.

Third Party Accessories

Use of third party accessories, including but not limited to batteries, chargers, headsets, covers, cases, screen protectors and memory cards, may impact your mobile device's performance. In some circumstances, third party accessories can be dangerous and may void your mobile device's warranty. For a list of Motorola accessories, visit www.motorola.com/products

Driving Precautions

Responsible and safe driving is your primary responsibility when behind the wheel of a vehicle. Using a mobile device or accessory for a call or other application while driving may cause distraction, and may be prohibited or restricted in certain areas—always obey the laws and regulations on the use of these products.

While driving, NEVER:

- Type, read, enter or review texts, emails, or any other written data.
- Surf the web.
- Input navigation information.
- Perform any other functions that divert your attention from driving.

While driving, ALWAYS:

- Keep your eyes on the road.
- Use a handsfree device if available or required by law in your area.
- Enter destination information into a navigation device **before** driving.
- Use voice activated features (such as voice dial) and speaking features (such as audible directions), if available.
- Obey all local laws and regulations for the use of mobile devices and accessories in the vehicle.
- End your call or other task if you cannot concentrate on driving.

Remember to follow the “Smart Practices While Driving” at www.motorola.com/callsmart (in English only).

Seizures, Blackouts & Eyestrain

To reduce eyestrain and avoid headaches, it is always a good idea to hold the screen a comfortable distance from your eyes, use in a well-lit area, and take frequent breaks. Some people may be susceptible to seizures or blackouts (even if they have never had one before) when exposed to flashing lights or light patterns, such as when playing video games, or watching videos with flashing-light effects.

Discontinue use and consult a physician if any of the following symptoms occur: seizures, blackout, convulsion, eye or muscle twitching, loss of awareness, or disorientation. If you or someone in your family has experienced seizures or blackouts, please consult with your physician before using an application that produces flashing-light effects on your mobile device.

Caution About High Volume Usage

Warning: Exposure to loud noise from any source for extended periods of time may affect your hearing. The louder the volume sound level, the less time is required before your hearing could be affected. To protect your hearing:

- Limit the amount of time you use headsets or headphones at high volume.
- Avoid turning up the volume to block out noisy surroundings.
- Turn the volume down if you can't hear people speaking near you.

If you experience hearing discomfort, including the sensation of pressure or fullness in your ears, ringing in your ears, or muffled speech, you should stop listening to the device through your headset or headphones and have your hearing checked.

For more information about hearing, see our website at direct.motorola.com/hellomoto/nss/AcousticSafety.asp (in English only).



Repetitive Motion

When you repetitively perform actions such as pressing keys or entering finger-written characters, you may experience occasional discomfort in your hands, arms, shoulders, neck, or other parts of your body. If you continue to have discomfort during or after such use, stop use and see a physician.

Children

Keep your mobile device and its accessories away from small children. These products are not toys and may be hazardous to small children. For example:

- A choking hazard may exist for small, detachable parts.
- Improper use could result in loud sounds, possibly causing hearing injury.
- Improperly handled batteries could overheat and cause a burn.

Supervise access for older children. Similar to a computer, if an older child does use your mobile device, you may want to monitor their access to help prevent:

- Exposure to inappropriate apps or content.
- Improper use of apps or content.
- Loss of data.

Glass Parts

Some parts of your mobile device may be made of glass. This glass could break if the product receives a substantial impact. If glass breaks, do not touch or attempt to remove. Stop using your mobile device until the glass is replaced by a qualified service center.

Operational Warnings

Obey all posted signs when using mobile devices in public areas.





Potentially Explosive Areas





Potentially explosive areas are often, but not always, posted and can include blasting areas, fueling stations, fueling areas (such as below decks on boats), fuel or chemical transfer or storage facilities, or areas where the air contains chemicals or particles, such as grain dust, or metal powders.

When you are in such an area, turn off your mobile device, and do not remove, install, or charge batteries, unless it is a radio product type especially qualified for use in such areas and certified as "Intrinsically Safe" (for example, Factory Mutual, CSA, or UL approved). In such areas, sparks can occur and cause an explosion or fire.

Symbol Key

Your battery, charger, or mobile device may contain symbols, defined as follows:

Symbol	Definition
	Important safety information follows.
	Do not dispose of your battery or mobile device in a fire.
 	Your battery or mobile device may require recycling in accordance with local laws. Contact your local regulatory authorities for more information.

Symbol	Definition
	Do not dispose of your battery or mobile device with your household waste. See "Recycling" for more information.
	Do not use tools.
	For indoor use only.
	Listening at full volume to music or voice through a headset may damage your hearing.

Radio Frequency (RF) Energy

Exposure to RF Energy

Your mobile device contains a transmitter and receiver. When it is ON, it receives and transmits RF energy. When you communicate with your mobile device, the system handling your call controls the power level at which your mobile device transmits.

Your mobile device is designed to comply with local regulatory requirements in your country concerning exposure of human beings to RF energy.

RF Energy Operational Precautions

For optimal mobile device performance, and to be sure that human exposure to RF energy does not exceed the guidelines set forth in the relevant standards, always follow these instructions and precautions:

- When placing or receiving a phone call, hold your mobile device just like you would a landline phone.
- If you wear the mobile device on your body, always place the mobile device in a Motorola-supplied or approved accessory (e.g. clip, holder, holster, case or arm band). If you do not use a body-worn accessory supplied or approved by Motorola, ensure that

whatever product is used is free of any metal and that it positions the mobile device at least 2.5 cm (1 inch) away from the body.

- Using accessories not supplied or approved by Motorola may cause your mobile device to exceed RF energy exposure guidelines. For a list of Motorola-supplied or approved accessories, visit our website at: www.motorola.com.

RF Energy Interference/Compatibility

Nearly every electronic device is subject to RF energy interference from external sources if inadequately shielded, designed, or otherwise configured for RF energy compatibility. In some circumstances, your mobile device may cause interference with other devices.

Follow Instructions to Avoid Interference Problems

Turn off your mobile device in any location where posted notices instruct you to do so, such as hospitals or health care facilities.

In an aircraft, turn off your mobile device whenever instructed to do so by airline staff. If your mobile device offers an airplane mode or similar feature, consult airline staff about using it in flight.

Medical Devices

If you have a medical device, including an implantable medical device such as a pacemaker or defibrillator, consult your healthcare provider and the device manufacturer's directions before using this mobile device.

Persons with implantable medical devices should observe the following precautions:

- ALWAYS keep the mobile device more than 20 centimeters (8 inches) from the implantable medical device when the mobile device is turned ON.
- DO NOT carry the mobile device in the breast pocket.
- Use the ear opposite the implantable medical device to minimize the potential for interference.
- Turn OFF the mobile device immediately if you have any reason to suspect that interference is taking place.

Regulatory Information

Your Motorola mobile device is designed to comply with national and international regulatory requirements. For full compliance statements and details, please refer to the regulatory information in your printed product guide.

Location Services

The following information is applicable to Motorola mobile devices that provide location based functionality. Location sources can include GPS, AGPS and Wi-Fi.

Your mobile device can use *Global Positioning System* (GPS) signals for location-based applications. GPS uses satellites controlled by the U.S. government that are subject to changes implemented in accordance with the Department of Defense policy and the Federal Radio Navigation Plan. These changes may affect the performance of location technology on your mobile device.

Your mobile device can also use *Assisted Global Positioning System* (AGPS), which obtains information from the cellular network to improve GPS performance. AGPS uses your wireless service provider's network and therefore airtime, data charges, and/or additional charges may apply in accordance with your service plan. Contact your wireless service provider for details.

Your mobile device can also use *Wi-Fi* signals to determine your approximate location, using information from known and available Wi-Fi networks.

Your Location

Location-based information includes information that can be used to determine the approximate location of a mobile device. Mobile devices which are connected to a wireless network transmit location-based information. Devices enabled with location technology also transmit location-based information. Additionally, if you use applications that require location-based information (e.g. driving directions), such applications transmit location-based information. This location-based information may be shared with third parties, including your wireless service provider, applications providers, Motorola, and other third parties providing services.

Emergency Calls

When you make an emergency call, the cellular network may activate the AGPS technology in your mobile device to tell the emergency responders your approximate location.

AGPS has limitations and **might not work in your area**. Therefore:

- Always tell the emergency responder your location to the best of your ability; and
- Remain on the phone for as long as the emergency responder instructs you.

Navigation

The following information is applicable to Motorola mobile devices that provide navigation features.

When using navigation features, note that mapping information, directions and other navigational data may contain inaccurate or incomplete data. In some countries, complete information may not be available. Therefore, you should visually confirm that the navigational instructions are consistent with what you see. All drivers should pay attention to road conditions, closures, traffic, and all other factors that may impact driving. Always obey posted road signs.

Privacy & Data Security

Motorola understands that privacy and data security are important to everyone. Because some features of your mobile device may affect your privacy or data security, please follow these recommendations to enhance protection of your information:

- **Monitor access**—Keep your mobile device with you and do not leave it where others may have unmonitored access. Use your device's security and lock features, where available.
- **Keep software up to date**—If Motorola or a software/application vendor releases a patch or software fix for your mobile device that updates the device's security, install it as soon as possible.
- **Secure Personal Information**—Your mobile device can store personal information in various locations including your SIM card, memory card, and phone memory. Be sure to remove or clear all personal information before you recycle, return, or give away your device. You can also backup your personal data to transfer to a new device.
Note: For information on how to backup or wipe data from your mobile device, go to www.motorola.com/support
- **Online accounts**—Some mobile devices provide a Motorola online account (such as MOTOBLUR). Go to your account for information on how to manage the account, and how to use security features such as remote wipe and device location (where available).
- **Applications and updates**—Choose your apps and updates carefully, and install from trusted sources only. Some apps can impact your phone's performance and/or have access to private information including account details, call data, location details and network resources.
- **Wireless**—For mobile devices with Wi-Fi features, only connect to trusted Wi-Fi networks. Also, when using your device as a hotspot (where available) use network security. These precautions will help prevent unauthorized access to your device.

- **Location-based information**—Mobile devices enabled with location based technologies such as GPS, AGPS or Wi-Fi, can transmit location-based information. See "Location Services" for more details.
- **Other information your device may transmit**—Your device may also transmit testing and other diagnostic (including location-based) information, and other non-personal information to Motorola or other third-party servers. This information is used to help improve products and services offered by Motorola.

If you have further questions regarding how the use of your mobile device may impact your privacy or data security, please contact Motorola at privacy@motorola.com, or contact your service provider.

Use & Care

To care for your Motorola mobile device, please observe the following:



liquids

Don't expose your mobile device to water, rain, extreme humidity, sweat, or other liquids.



drying

Don't try to dry your mobile device using a microwave oven, conventional oven, or dryer, as this may damage the mobile device.



extreme heat or cold

Don't store or use your mobile device in temperatures below -10°C (14°F) or above 60°C (140°F). Don't recharge your mobile device in temperatures below 0°C (32°F) or above 45°C (113°F).



dust and dirt

Don't expose your mobile device to dust, dirt, sand, food, or other inappropriate materials.



cleaning

To clean your mobile device, use only a dry soft cloth. Don't use alcohol or other cleaning solutions.

**shock and vibration**

Don't drop your mobile device.

**protection**

To help protect your mobile device, always make sure that any battery, connector and compartment covers are closed and secure.

Recycling

Mobile Devices & Accessories

Please do not dispose of mobile devices or electrical accessories (such as chargers, headsets, or batteries) with your household waste, or in a fire. These items should be disposed of in accordance with the national collection and recycling schemes operated by your local or regional authority. Alternatively, you may return unwanted mobile devices and electrical accessories to any Motorola Approved Service Center in your region. Details of Motorola approved national recycling schemes, and further information on Motorola recycling activities can be found at: www.motorola.com/recycling



Packaging & Product Guides

Product packaging and product guides should only be disposed of in accordance with national collection and recycling requirements. Please contact your regional authorities for more details.

Software Copyright

Motorola products may include copyrighted Motorola and third-party software stored in semiconductor memories or other media. Laws in the United States and other countries preserve for Motorola and third-party software providers certain exclusive rights for copyrighted software, such as the exclusive rights to distribute or reproduce the copyrighted software. Accordingly, any copyrighted software contained in Motorola products may not be modified, reverse-engineered, distributed, or reproduced in any manner to the extent allowed by law. Furthermore, the purchase of Motorola products shall not be deemed to grant either directly or by implication, estoppel, or otherwise, any license under the copyrights, patents, or patent applications of Motorola or any third-party software provider, except for the normal,

non-exclusive, royalty-free license to use that arises by operation of law in the sale of a product.

Content Copyright

The unauthorized copying of copyrighted materials is contrary to the provisions of the Copyright Laws of the United States and other countries. This device is intended solely for copying non-copyrighted materials, materials in which you own the copyright, or materials which you are authorized or legally permitted to copy. If you are uncertain about your right to copy any material, please contact your legal advisor.

Open Source Software Information

For instructions on how to obtain a copy of any source code being made publicly available by Motorola related to software used in this Motorola mobile device, you may send your request in writing to the address below. Please make sure that the request includes the model number and the software version number.

MOTOROLA MOBILITY, INC.

OSS Management

600 North US Hwy 45

Libertyville, IL 60048

USA

The Motorola website opensource.motorola.com (in English only) also contains information regarding Motorola's use of open source.

Motorola has created the opensource.motorola.com website to serve as a portal for interaction with the software community-at-large.

To view additional information regarding licenses, acknowledgments and required copyright notices for open source packages used in this Motorola mobile device, please press Apps

> **Settings** > **About phone** > **Legal information**

> **Open source licenses**. In addition, this Motorola device may include self-contained applications that present supplemental notices for open source packages used in those applications.

Service & Repairs

If you have questions or need assistance, we're here to help.

Go to www.motorola.com/support, where you can select from a number of customer care options. For Australia and New Zealand users, you can also contact the Motorola Customer Support Center at 1300 138 823 (Australia) or 0508 6686 7652 (New Zealand).

How to Obtain Service or Other Information

1. Please access and review the online Customer Support section of Motorola's consumer website prior to requesting warranty service.
2. If the Product is still not functioning properly after making use of this resource, please contact the Warrantor listed at the Motorola website or the contact information for the corresponding location.
3. A representative of Motorola, or of a Motorola Authorized Repair Center, will help determine whether your Product requires service. You may be required to download, or otherwise obtain and accept software updates from Motorola or a Motorola Authorized Repair Center. You are responsible for any applicable carrier service fees incurred while obtaining the required downloads. Complying with the warranty process, repair instructions and accepting such software updates is required in order to receive additional warranty support.
4. If the software update does not fix the problem, you will receive instructions on how to ship the Product to a Motorola Authorized Repair Center or other entity.
5. To obtain warranty service, as permitted by applicable law, you are required to include: (a) a copy of your receipt, bill of sale or other comparable proof of purchase; (b) a written description of the problem; (c) the name of your service provider, if applicable; (d) your address and telephone number. In the event the Product is not covered by the Motorola Limited Warranty, Motorola will inform the consumer of the availability, price and other conditions applicable to the repair of the Product.

To obtain service or other information, please access and review the online Customer Support section of Motorola's consumer website at www.motorola.com.

Copyright & Trademarks

Motorola Mobility, Inc.
Consumer Advocacy Office
600 N US Hwy 45
Libertyville, IL 60048
www.motorola.com

1-800-734-5870 (United States)

Certain features, services and applications are network dependent and may not be available in all areas; additional terms, conditions and/or charges may apply. Contact your service provider for details.

All features, functionality, and other product specifications, as well as the information contained in this guide, are based upon the latest available information and believed to be accurate at the time of printing. Motorola reserves the right to change or modify any information or specifications without notice or obligation.

Note: The images in this guide are examples only.

MOTOROLA and the Stylized M Logo are trademarks or registered trademarks of Motorola Trademark Holdings, LLC. Google, the Google logo, Google+, Google Maps, Google Talk, Google Latitude, Gmail, YouTube, Google Play, Google Drive, Google Local, Google Maps Navigation Beta, Google Calendar, Android, and other marks are trademarks of Google, Inc. All other product or service names are the property of their respective owners.

© 2012 Motorola Mobility, Inc. All rights reserved.

Caution: Motorola does not take responsibility for changes/modification to the transceiver.

Product ID: MOTOROLA RAZR HD (Model XT925)

Manual Number: 68017216001



BUSINESS
READY



68017216001