



Lenovo A680

Quick Start Guide v1.0



For Android 4.2 Software.

Read this guide carefully before using your phone.

Technical specifications



Model and system

Model: Lenovo A680

System: Android 4.2



① Size and weight

Height: 145 mm Width: 73.5 mm Depth: 10.8 mm
Weight: 165 g



CPU and capacity

CPU: MT6582M Quad-core 1.3 GHz
Capacity: 4 GB



Camera

Type: CMOS
Pixels: 5.0 MP (back) + 0.3 MP (front)



Power and battery

Battery: 2000 mAh



Display

Size: 5.0 FWVGA Screen: 1 point display
Resolution: 854 × 480 LCD type: TN



Wireless communication

② Bluetooth 3.0 WLAN WCDMA, GSM, EDGE



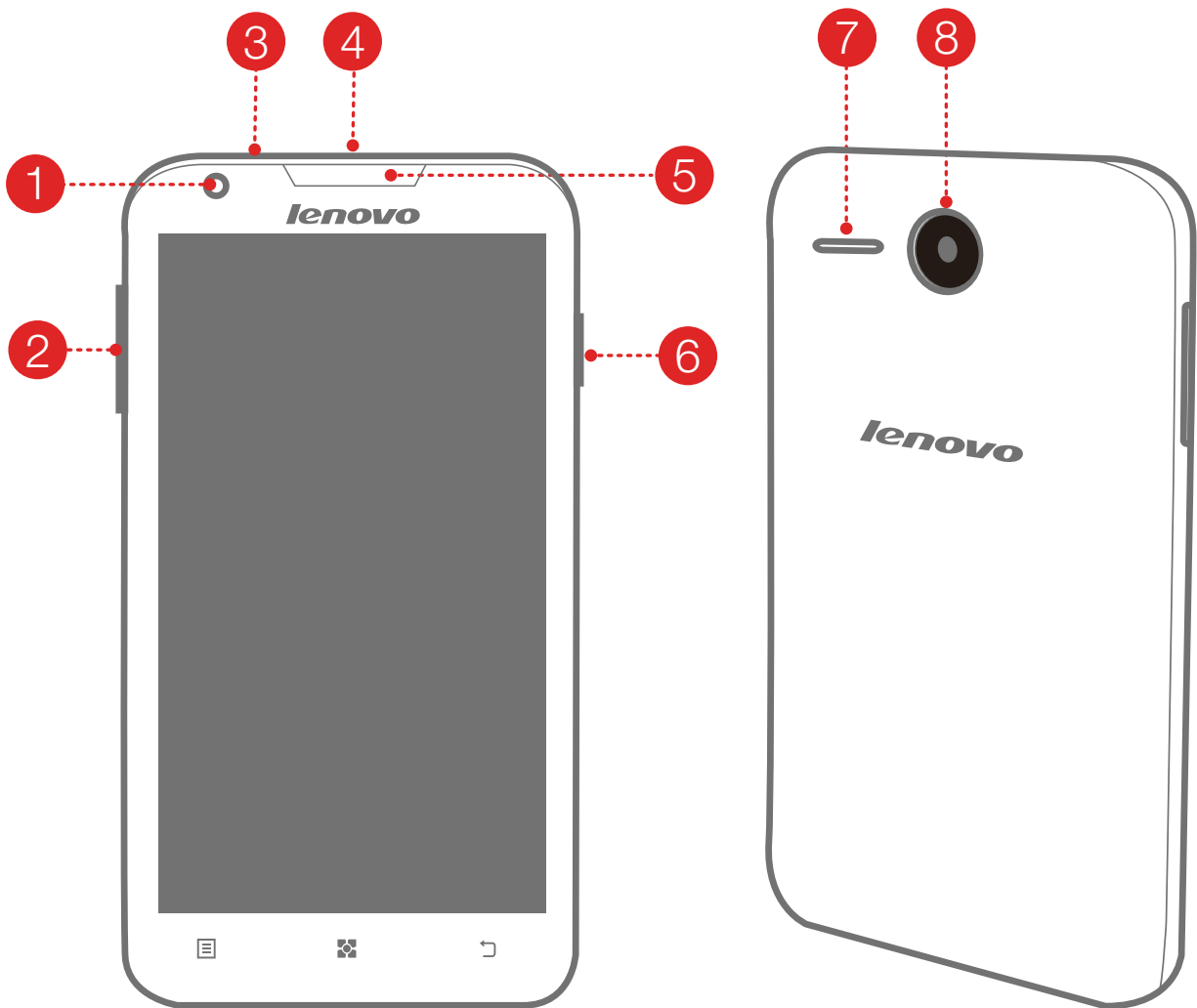
GPS



① Based on actual measurements.

② You must be within about 10 m (30 ft) of a Bluetooth device for it to be connected to your phone.

First glance



1 Front camera

4 Micro USB

7 Speaker

2 Volume key

5 Receiver

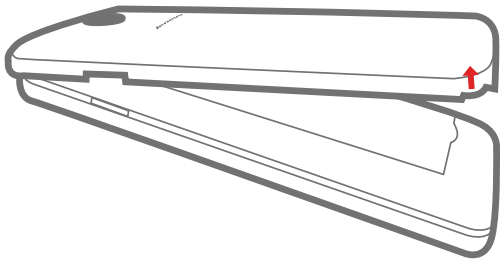
8 Back camera

3 Earphone jack

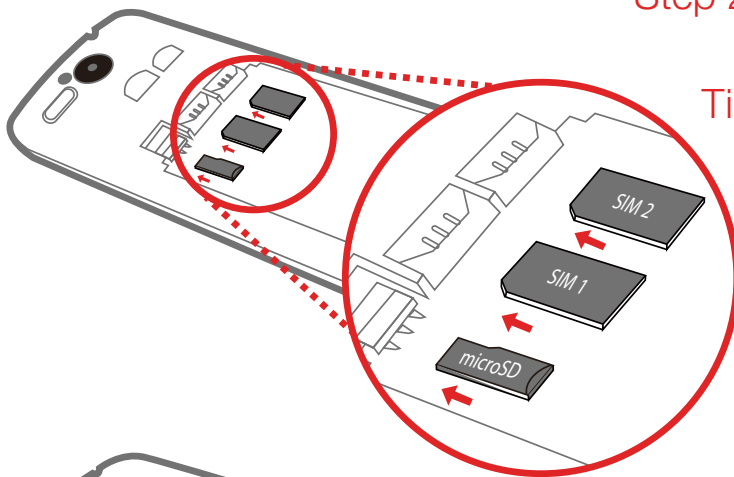
6 On/Off button

Preparing your phone

You need to insert the SIM card provided by your carrier to use cellular services. Install your phone as shown.

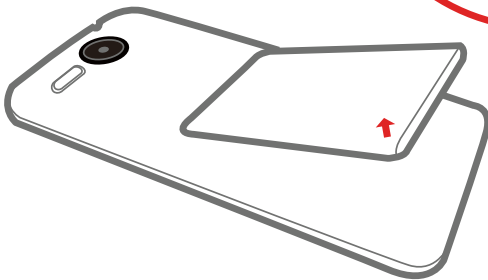


Step 1. Open the back cover.

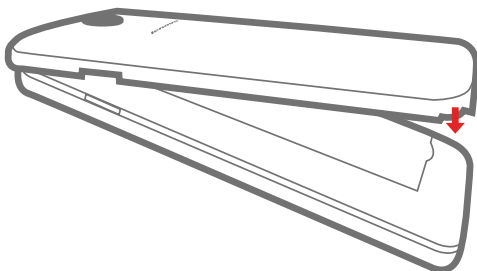


Step 2. Insert the SIM cards and the memory card.

Tip: Insert (U)SIM card into SIM 1 slot and SIM card into SIM 2 slot.



Step 3. Install the battery.



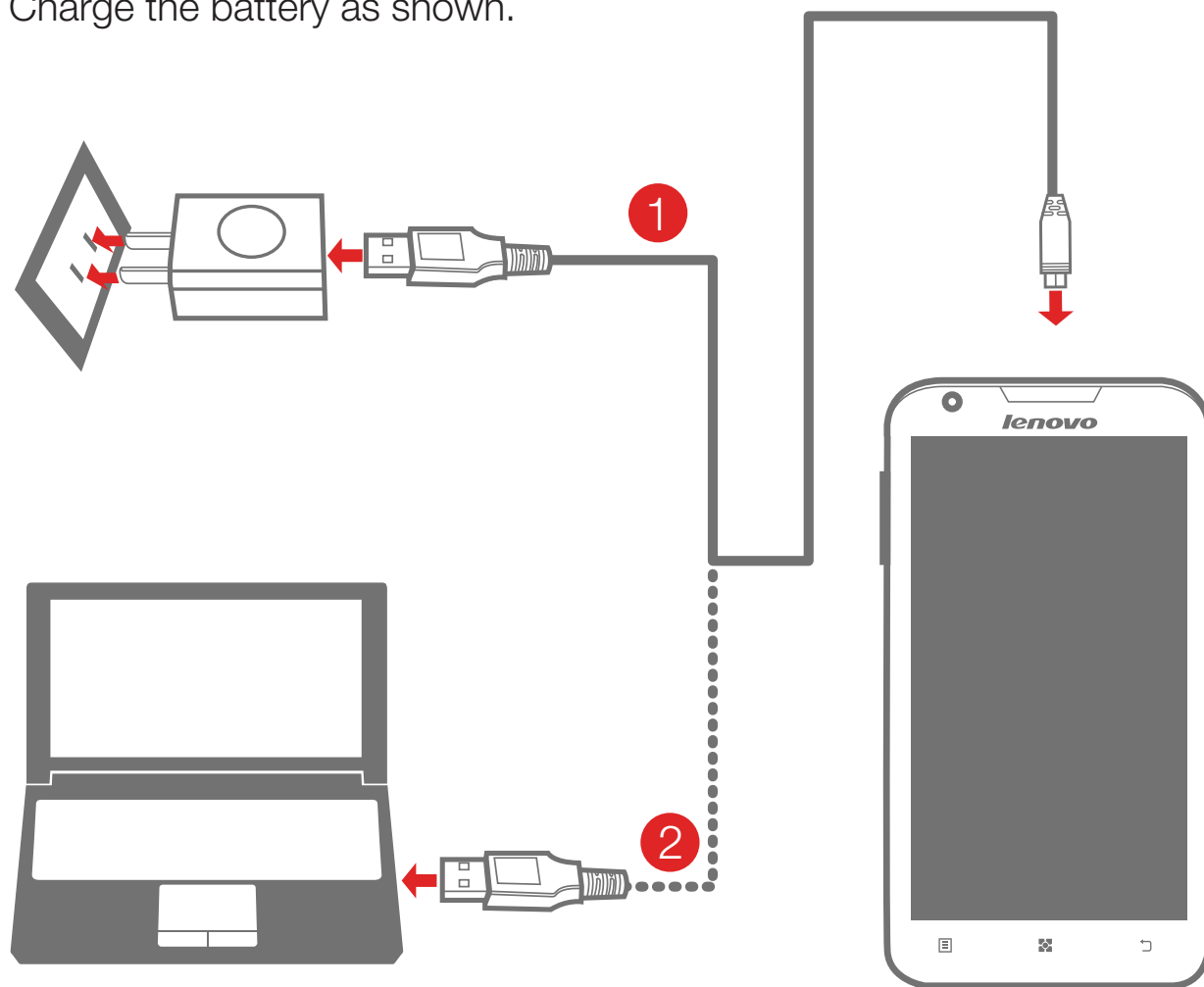
Step 4. Install the back cover.



DO NOT insert or remove the SIM cards while your phone is turned on. Doing so can permanently damage your SIM card or your phone.

Charging the battery

Charge the battery as shown.



Method 1. Connect your phone to a power outlet using the included cable and USB power adapter.

Method 2. Charge the battery using a computer.



Low battery



Fully charged



Charging



For more information about battery safety, see the **Important Product Information Guide**.

Learn more

For more information about Lenovo Mobile Phone functions, Regulatory Notices and other useful manuals, go to <http://support.lenovo.com/>.

Legal notices

Lenovo and the Lenovo logo are trademarks of Lenovo in the United States, other countries, or both.
Other company, product, or service names may be trademarks or service marks of others.

First Edition (December 2013)
© Copyright Lenovo 2013.

Reduce | Reuse | Recycle



HQ60110917000

Printed in China