



Lenovo A316i

Quick Start Guide v1.0



Read this guide carefully before using your phone.

Technical specifications



Model and system

Model: Lenovo A316i

System: Android 4.2



① Size and weight

Height: 117 mm

Width: 63.5 mm

Depth: 12.2 mm

Weight: 130.2g



CPU and capacity

CPU: MTK 6572 Dual Core 1.3GHz

Capacity: 4 GB



Camera

Type: CMOS

Pixels: 2.0 MP



Power and battery

Battery: 1300 mAh (Built-in rechargeable lithium-ion battery)



Display

Size: 4.0 inches (diagonal)

Resolution: WVGA

LCD type: Capacitive Touchscreen



Wireless communication

②Bluetooth 3.0

WLAN

WCDMA, GSM/EDGE/GPRS



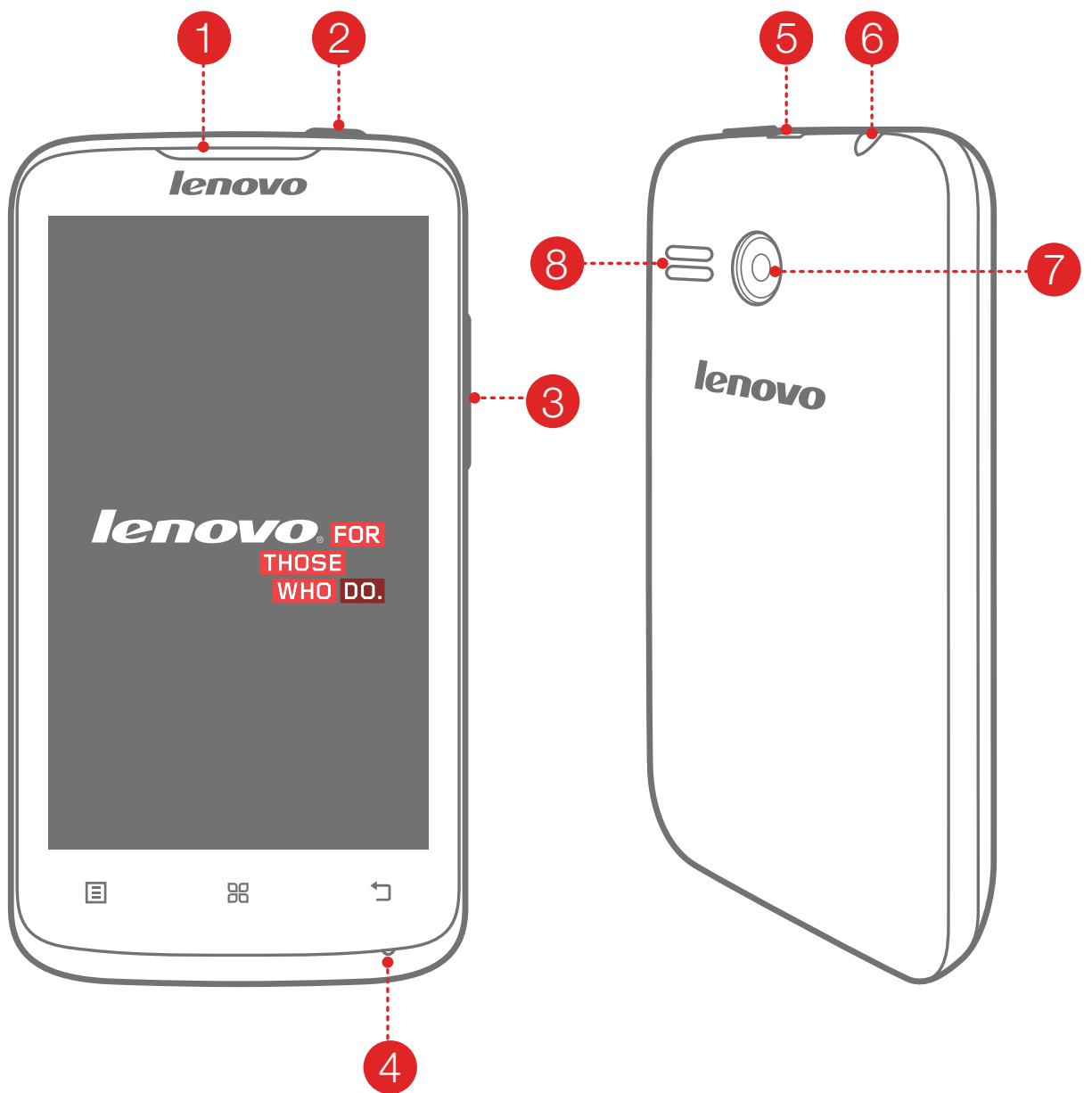
GPS



① Based on actual measurements.

② You must be within about 10 m (30ft) of a Bluetooth device for it to be connected to your phone.

First Glance



1 Receiver

2 On/Off button

3 Volume key

4 Microphone

5 Micro USB

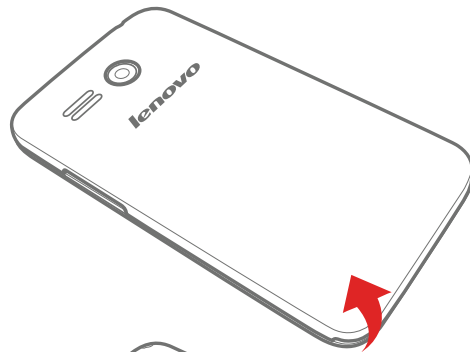
6 Earphone jack

7 Rear camera

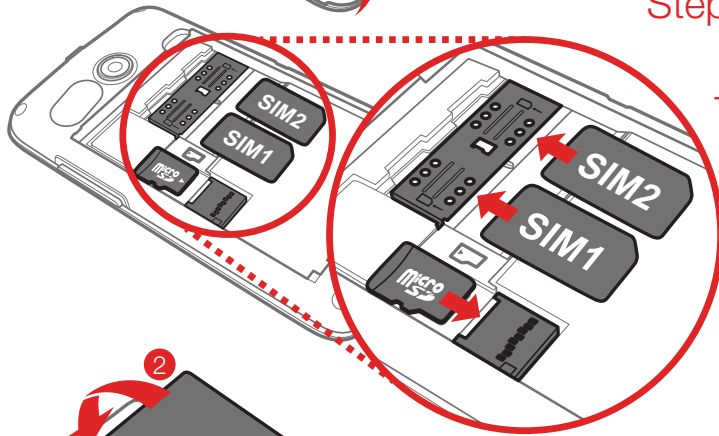
8 Speaker

Preparing your phone

You need to insert the SIM card provided by your carrier to use cellular services. Install your phone as shown.

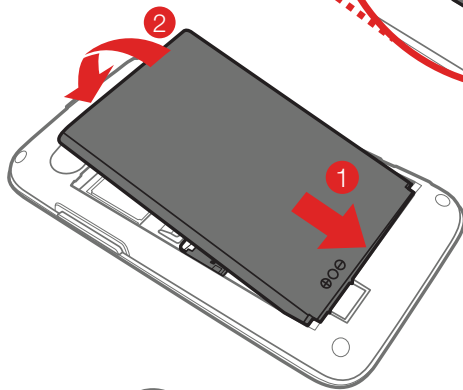


Step 1. Open the back cover.



Step 2. Insert the SIM cards and the memory card.

Tip: Insert (U)SIM card into SIM 1 slot and SIM card into SIM 2 slot.



Step 3. Install the battery.



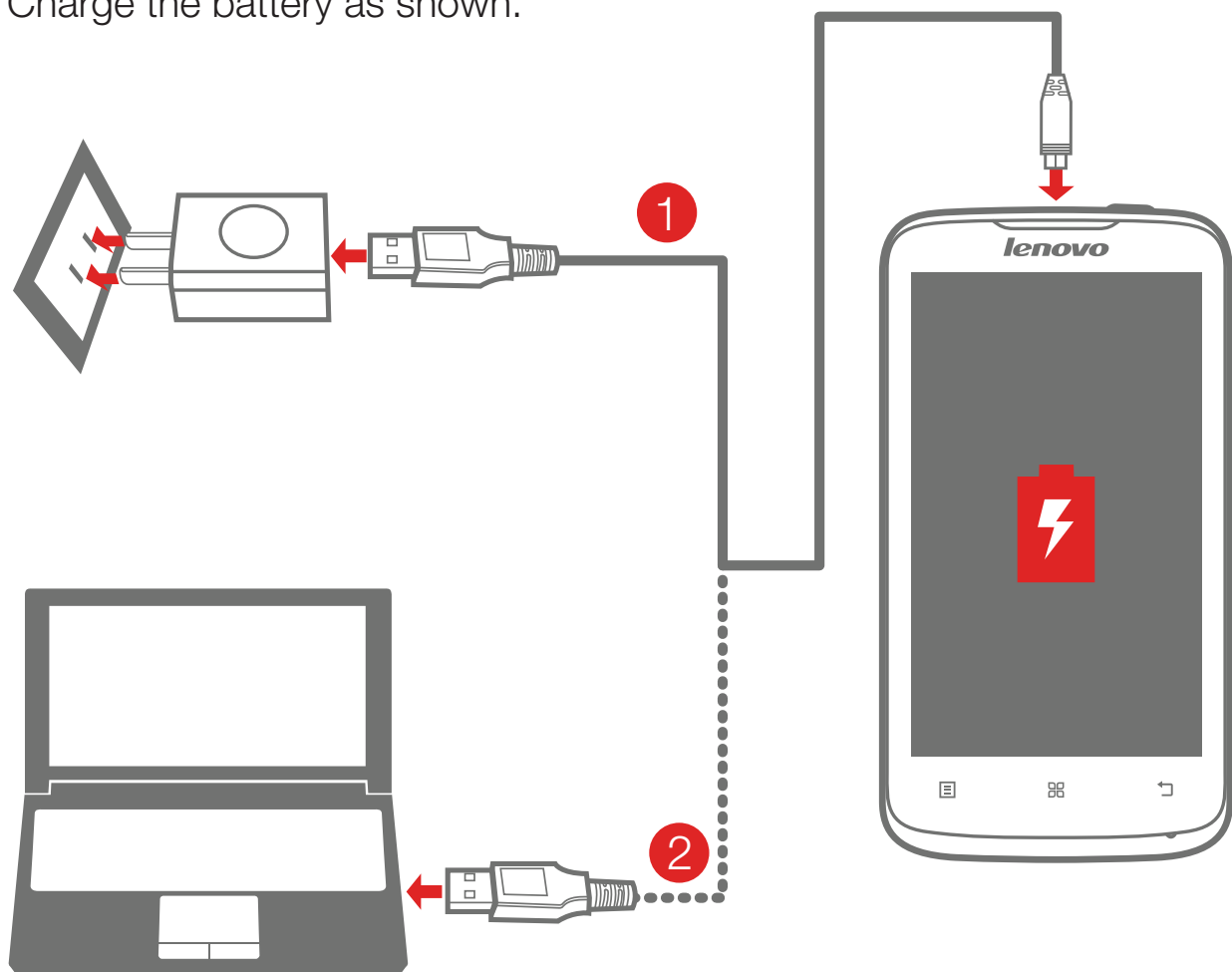
Step 4. Install the back cover.



DO NOT insert or remove the SIM cards while your phone is turned on. Doing so can permanently damage your SIM card or your phone.

Charging the battery

Charge the battery as shown.



Method 1. Connect your phone to a power outlet using the included cable and USB power adapter.

Method 2. Charge the battery using a computer.

 Low battery

 Fully charged

 Charging

 For more information about battery safety, see the **Important Product Information Guide**.

Learn more

For more information about Lenovo Mobile Phone functions, Regulatory Notices and other useful manuals, go to <http://support.lenovo.com/>.

Getting support

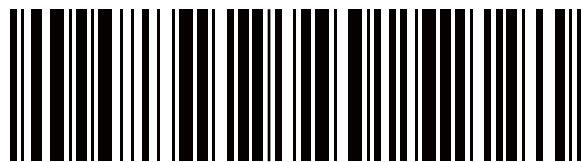
For support on network service and billing, please contact your wireless network operator. For instructions on how to use your device, go to <http://support.lenovo.com/>.

Legal notices

Lenovo, the Lenovo logo are trademarks of Lenovo in the United States, other countries, or both.
Other company, product, or service names may be trademarks or service marks of others.

First Edition (January 2014) © Copyright Lenovo 2014.

Reduce | Reuse | Recycle



8306LV7901W

Printed in China