

Padfone X mini<sup>TM</sup>

# e-MANUAL

**ASUS**

**Copyright © 2014 ASUSTeK COMPUTER INC. All Rights Reserved.**

No part of this manual, including the products and software described in it, may be reproduced, transmitted, transcribed, stored in a retrieval system, or translated into any language in any form or by any means, except documentation kept by the purchaser for backup purposes, without the express written permission of ASUSTeK COMPUTER INC ("ASUS").

Product warranty or service will not be extended if: (1) the product is repaired, modified or altered, unless such repair, modification of alteration is authorized in writing by ASUS; or (2) the serial number of the product is defaced or missing.

ASUS PROVIDES THIS MANUAL "AS IS" WITHOUT WARRANTY OF ANY KIND, EITHER EXPRESS OR IMPLIED, INCLUDING BUT NOT LIMITED TO THE IMPLIED WARRANTIES OR CONDITIONS OF MERCHANTABILITY OR FITNESS FOR A PARTICULAR PURPOSE. IN NO EVENT SHALL ASUS, ITS DIRECTORS, OFFICERS, EMPLOYEES OR AGENTS BE LIABLE FOR ANY INDIRECT, SPECIAL, INCIDENTAL, OR CONSEQUENTIAL DAMAGES (INCLUDING DAMAGES FOR LOSS OF PROFITS, LOSS OF BUSINESS, LOSS OF USE OR DATA, INTERRUPTION OF BUSINESS AND THE LIKE), EVEN IF ASUS HAS BEEN ADVISED OF THE POSSIBILITY OF SUCH DAMAGES ARISING FROM ANY DEFECT OR ERROR IN THIS MANUAL OR PRODUCT.

SPECIFICATIONS AND INFORMATION CONTAINED IN THIS MANUAL ARE FURNISHED FOR INFORMATIONAL USE ONLY, AND ARE SUBJECT TO CHANGE AT ANY TIME WITHOUT NOTICE, AND SHOULD NOT BE CONSTRUED AS A COMMITMENT BY ASUS. ASUS ASSUMES NO RESPONSIBILITY OR LIABILITY FOR ANY ERRORS OR INACCURACIES THAT MAY APPEAR IN THIS MANUAL, INCLUDING THE PRODUCTS AND SOFTWARE DESCRIBED IN IT.

Products and corporate names appearing in this manual may or may not be registered trademarks or copyrights of their respective companies, and are used only for identification or explanation and to the owners' benefit, without intent to infringe.

# Contents

Conventions used .....	9
Care and safety.....	10
Guidelines .....	10
Proper disposal.....	11
<b>1.           <i>Get your device ready!</i></b>	
Parts and features .....	14
Your phone .....	14
Your tablet.....	15
Installing a micro-SIM card .....	16
Installing a memory card.....	21
Charging your device.....	26
PadFone Charging Policy.....	26
Inserting/removing your phone into/from your tablet .....	29
Turning your device on or off .....	30
Using your device.....	33
Phone mode.....	33
DynamicDisplay mode .....	33
<b>2.           <i>There's no place like Home</i></b>	
Home features .....	36
Phone mode.....	36
Tablet mode.....	37
Using gestures.....	38
Managing your home .....	39
Managing notifications .....	43
Quick Settings .....	43
Setting up the date and time .....	45
Setting up your ringtone and alert sounds.....	45
ASUS keyboard settings.....	46
Voice Search .....	47

Lock Screen .....	50
DynamicDisplay .....	51
Power Management .....	51

### **3.           *Call in style***

Managing contacts .....	54
Adding contacts .....	54
Importing / exporting contacts .....	54
AT&T service contacts .....	54
Making and receiving calls .....	55
Making a call .....	55
Receiving a call .....	56
Backup/restore call logs .....	57
Creating a call log backup .....	57
Restoring call log backups .....	57
Voicemail .....	58

### **4.           *Send messages and more***

Messaging .....	60
Sending or replying to messages .....	60
Setting up your messaging options .....	61

### **5.           *Access your emails***

Email .....	64
Setting up an email account .....	64
Adding email accounts .....	65
Gmail .....	66
Setting up a Gmail account .....	66

### **6.           *Capture moments***

Launching the PixelMaster Camera app .....	68
From the lock screen .....	68
From the home screen .....	68
Using the volume key .....	68

Using PixelMaster Camera for the first time .....	68
Tutorial.....	68
Image Locations.....	69
PixelMaster Camera home screen .....	69
Image settings .....	70
Video settings .....	72
Advanced camera features .....	73
Time rewind.....	73
HDR.....	74
Panorama .....	74
Night .....	75
Selfie.....	76
Beautification .....	77
Miniature .....	77
Depth of field .....	78
Smart remove .....	78
All smiles.....	79
GIF animation.....	79

## **7.               Gallery**

Using the Gallery .....	82
Main screen.....	82
Viewing files from other source locations .....	83
Sharing files from the gallery .....	84
Deleting files from the gallery .....	84
Editing an image.....	85
Zooming in/out the thumbnails or an image .....	85

## **8.               Work hard, play harder**

SuperNote.....	88
Creating a notebook.....	90
Sharing a notebook on the Cloud .....	90
Sharing a note to the Cloud.....	90

Calendar .....	91
Creating an event from your PadFone .....	91
Adding an account to Calendar .....	92
Creating an event from your account .....	92
What's Next.....	93
Do It Later .....	94
Accessing or creating to-do tasks.....	94
Weather .....	95
Weather home screen.....	96
Clock .....	97
Launching Clock .....	97
World Clock.....	98
Alarm clock .....	99
Stopwatch .....	100
Timer .....	101
File Manager.....	103
Accessing the internal storage .....	103
Accessing the external storage device .....	104
Accessing the network storage .....	105
<b>9.               The Internet</b>	
Browser .....	108
<b>10.             Fun and entertainment</b>	
Using headset.....	110
Connecting audio jack.....	110
Audio Wizard.....	111
Using Audio Wizard.....	111
Play Games .....	112
Using Play Games .....	112
Music .....	113
Launching Music.....	113

Playing songs .....	113
Playing songs from your microSD card .....	113
Sound recorder .....	114
Launching Sound Recorder .....	114
Sound Recorder home screen.....	114
<b>11.           Maintain your PadFone</b>	
Storage.....	116
Backup and reset.....	116
Memory .....	117
Securing your PadFone .....	119
Unlocking your screen.....	119
Setting your PadFone identity.....	127
<b>12.           Connect your PadFone</b>	
Wi-Fi .....	130
Enabling Wi-Fi.....	130
Connecting to a Wi-Fi network.....	130
Disabling Wi-Fi.....	131
Bluetooth® .....	131
Enabling Bluetooth® .....	131
Pairing your PadFone to a Bluetooth® device .....	132
Unpairing your PadFone from the Bluetooth® device .....	132
<b>13.           App essentials</b>	
Managing apps.....	134
Adding app shortcuts to home .....	134
Removing app shortcuts from home .....	134
Organizing your apps.....	135
Viewing recent apps.....	136
Launching apps .....	136
Switching apps.....	137
Locking apps.....	137

Downloading apps ..... 138

**14.           *There's more to your PadFone***

Power saver ..... 140

    Setting up Power Saver ..... 140

    Customizing Power Saver..... 141

Splendid ..... 142

TalkBack..... 143

AT&T DriveMode® ..... 144

AT&T Services..... 145



## Conventions used

To highlight key information in this manual, some text are presented as follows:

---

**IMPORTANT!** This message contains vital information that must be followed to complete a task.

---

---

**NOTE:** This message contains additional information and tips that can help complete tasks.

---

---

**CAUTION!** This message contains important information that must be followed to keep you safe while performing tasks and prevent damage to your device data and components.

---

## Care and safety

### Guidelines



Road safety comes first. We strongly recommend not to use your device when driving or operating any type of vehicle.



This device should only be used in environments with ambient temperatures between 5°C (41°F) and 35°C (95°F).



Turn off your device in restricted areas where the use of mobile devices is prohibited. Always obey rules and regulations when in restricted areas, such as, in aircraft, movie theater, in hospitals or near medical equipment, near gas or fuel, construction sites, blasting sites and other areas.



Use only AC adapters and cables approved by ASUS for use with this device. Refer to the rating label on the bottom of your device and ensure that your power adapter complies with this rating.



Do not use damaged power cables, accessories, and other peripherals with your device.



Keep your device dry. Do not use or expose your device near liquids, rain, or moisture.



You can put your device through x-ray machines (such as those used in conveyor belts for airport security), but do not expose the device to magnetic detectors and wands.



The device screen is made of glass. If the glass gets broken, stop using the device and do not touch the broken glass parts. Immediately send device for repair to ASUS-qualified service personnel.



Do not listen at high volume levels for long periods to prevent possible hearing damage.



Disconnect the AC power before cleaning your device. Use only a clean cellulose sponge or chamois cloth when cleaning your device screen.



Send device for repair to ASUS-qualified service personnel only.

## Proper disposal



Do not throw your device in municipal waste. This product has been designed to enable proper reuse of parts and recycling. The symbol of the crossed out wheeled bin indicates that the product (electrical, electronic equipment and mercury-containing button cell battery) should not be placed in municipal waste. Check local regulations for disposal of electronic products.



Do not throw the battery in municipal waste. The symbol of the crossed out wheeled bin indicates that the battery should not be placed in municipal waste.



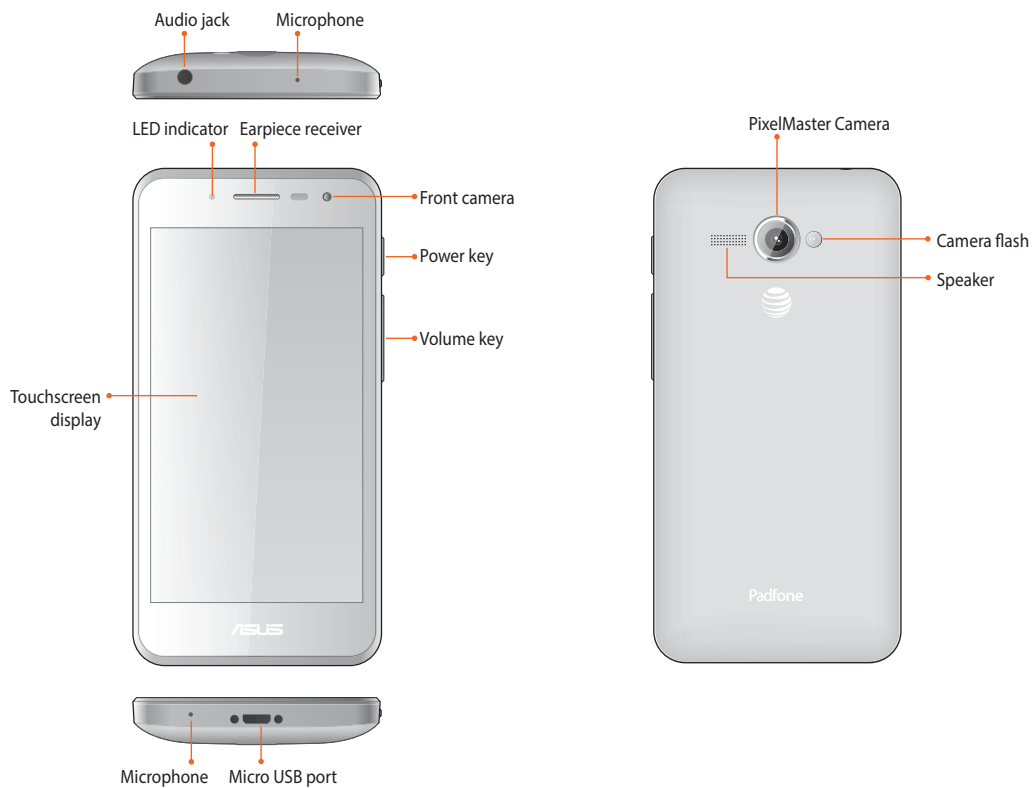
1

*Get your device ready!*

## Parts and features

Take a hold of your device and have it up and running in a jiffy.

### Your phone

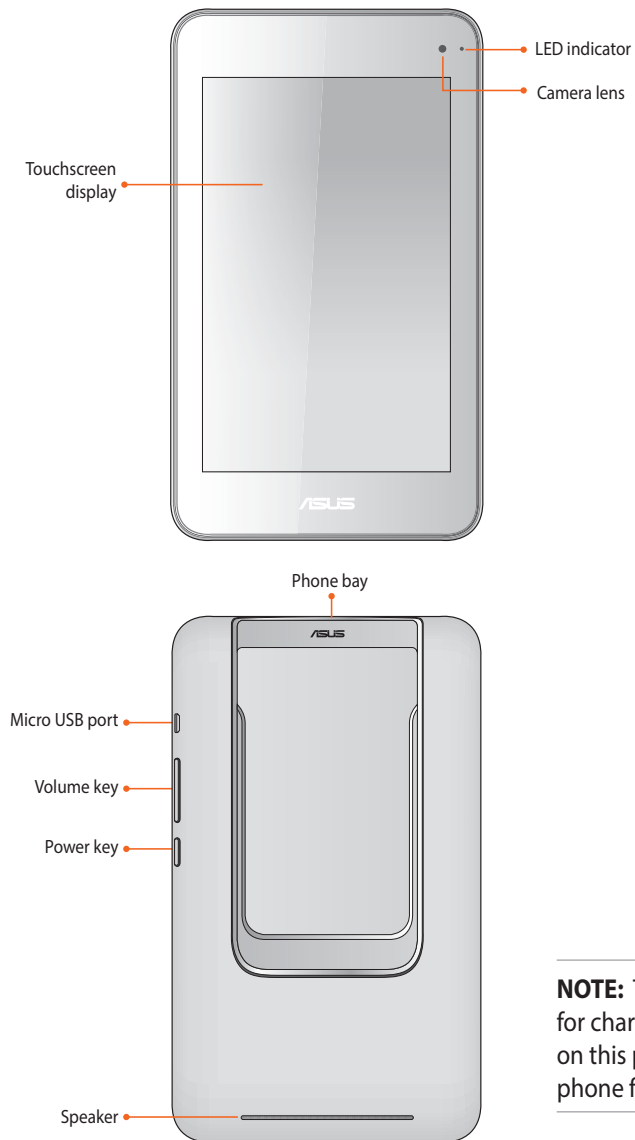


---

#### NOTES:

- Remove the rear cover to display the micro SIM and microSD card slots.
  - The micro SIM card slot supports WCDMA, DC-HSPA, and GSM/EDGE network bands.
  - The microSD card slot supports microSD and microSDHC card formats.
-

## Your tablet



**NOTE:** The micro USB port on the tablet is for charging only. There is no USB functions on this port. Use the micro USB port on the phone for USB functions.

## Installing a micro-SIM card

A micro-subscriber identity module (micro-SIM) card stores information, such as your mobile phone number, contacts, messages, and other data that gives you access to a mobile network.

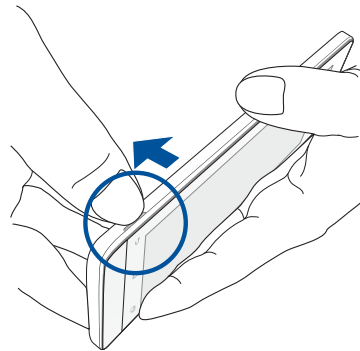
---

### CAUTION!

- This device is designed for use with a mobile carrier-approved micro-SIM card only.
  - We do not recommend the use of a trimmed SIM card in the micro-SIM card slot.
  - Turn off your device before inserting a micro-SIM card.
  - Be extra careful when handling a micro-SIM card. ASUS is not responsible for any loss or damage incurred to your micro-SIM card.
  - **DO NOT** insert a memory card into the micro-SIM card slot! If a memory card happens to be inserted into the micro-SIM slot, send your device to an ASUS-qualified service personnel.
- 

### To install a micro-SIM card:

1. Turn off your phone.
2. Locate the groove on the bottom-left corner of your phone.





3. Pry the cover loose and pull the rear cover off.

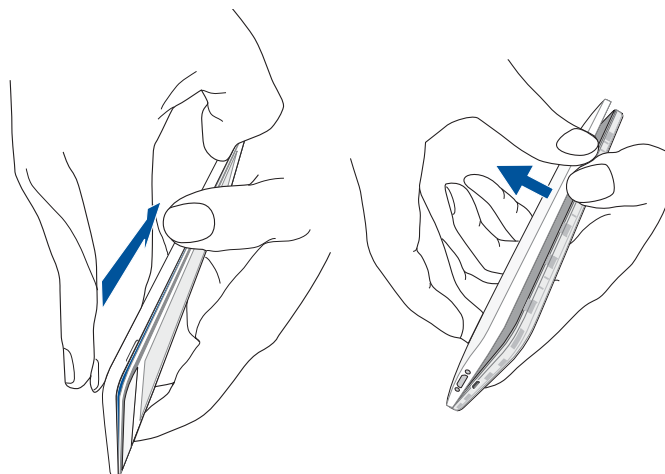
---

**CAUTION!** Be careful not to injure your fingernails when you remove the rear cover.

---

**WARNING!**

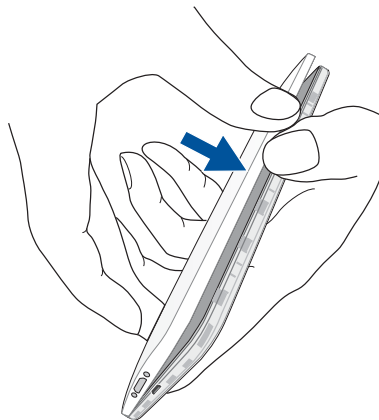
- **DO NOT** use tools like screwdrivers to remove the rear cover.
  - **DO NOT** pry the USB port.
- 



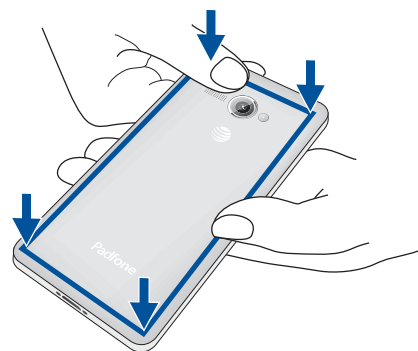
4. Align and insert the micro-SIM card into the micro-SIM card slot with the gold-plated contacts facing upward.
5. Push the micro-SIM card all the way into the slot until it is seated firmly in place.



6. Replace the rear cover.



7. Press down the rear cover on all sides to secure it in place.



## Removing a micro-SIM card

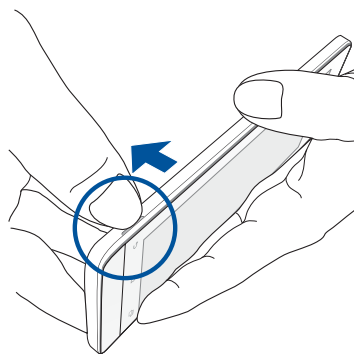
---

**CAUTION!** Be extra careful when handling a micro-SIM card. ASUS is not responsible for any loss or damage incurred to your micro-SIM card.

---

### To remove a micro-SIM card:

1. Turn off your phone.
2. Locate the groove on the bottom-left corner of your phone.



3. Pry the cover loose and pull the rear cover off.

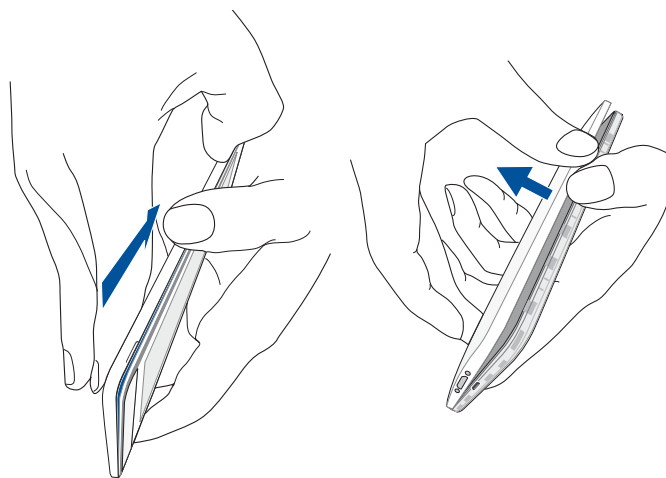
---

**CAUTION!** Be careful not to injure your fingernails when you remove the rear cover.

---

#### **WARNING!**

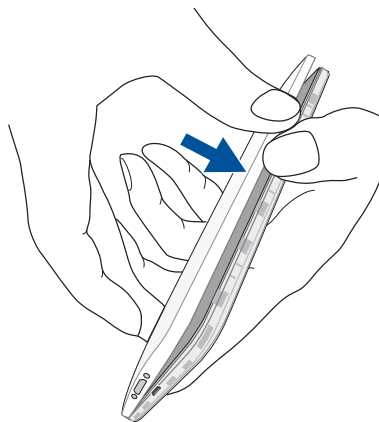
- **DO NOT** use tools like screwdrivers to remove the rear cover.
  - **DO NOT** pry the USB port.
- 



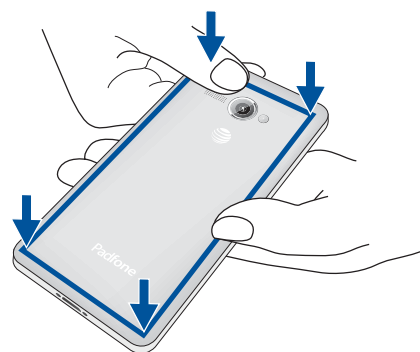
4. Press the micro-SIM card to eject, then pull it out.



5. Replace the rear cover.



6. Press down the rear cover on all sides to secure it in place.



## Installing a memory card

Your device supports a microSD™ and microSDHC™ memory card with up to 64GB of capacity.

---

**NOTE:** Some memory cards may not be compatible with your device. Ensure that you use only 100%- compatible memory cards to prevent loss of data, damage to your device, memory card, or both.

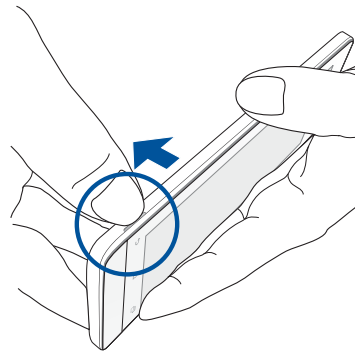
---

### CAUTION!

- Be extra careful when handling a memory card. ASUS is not responsible for any data loss or damage incurred to your memory card.
  - **DO NOT** insert a micro-SIM card into the memory card slot! If a micro-SIM card happens to be inserted into the memory card slot, bring your device to an ASUS-qualified service personnel.
- 

### To install a memory card:

1. Turn off your phone.
2. Locate the groove on the bottom-left corner of your phone.

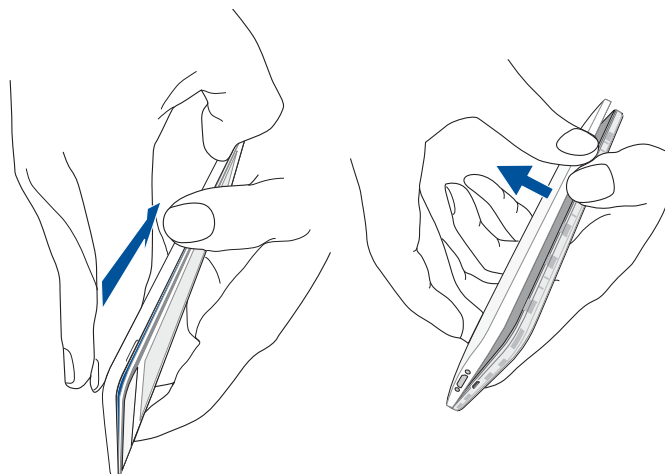


3. Pry the cover loose and pull the rear cover off.

**CAUTION!** Be careful not to injure your fingernails when you remove the rear cover.

**WARNING!**

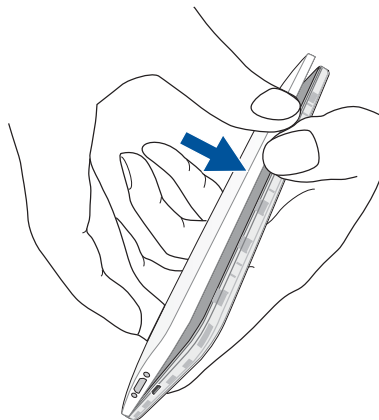
- **DO NOT** use tools like screwdrivers to remove the rear cover.
- **DO NOT** pry the USB port.



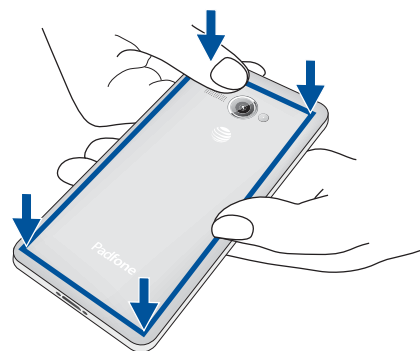
4. Align and insert the memory card into the memory card slot.
5. Push the memory card all the way into the slot until it is seated firmly in place.



6. Replace the rear cover.



7. Press down the rear cover on all sides to secure it in place.



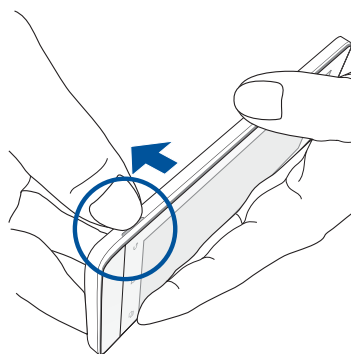
## Removing the memory card

### CAUTION!

- Be extra careful when handling a memory card. ASUS is not responsible for any data loss or damage incurred to your memory card.
- Before removing a memory card, ensure that you safely unmount it from your phone. To do this, go to **Settings > Storage > Unmount external storage**.

### To remove the memory card:

1. Turn off your phone.
2. Locate the groove on the bottom-left corner of your phone.

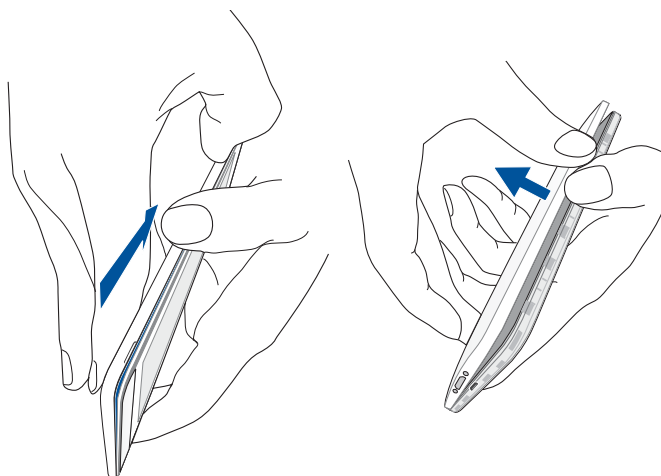


3. Pry the cover loose and pull the rear cover off.

**CAUTION!** Be careful not to injure your fingernails when you remove the rear cover.

### WARNING!

- **DO NOT** use tools like screwdrivers to remove the rear cover.
- **DO NOT** pry the USB port.

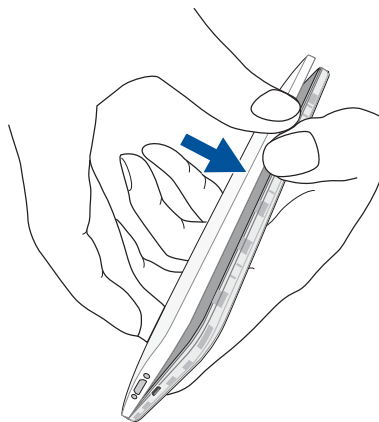




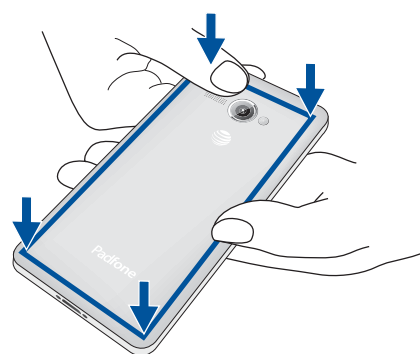
4. Press the memory card to eject, then pull it out.



5. Replace the rear cover.



6. Press down the rear cover on all sides to secure it in place.



## Charging your device

Your device comes partially charged but you must charge it fully before using it for the first time. Read the following important notices and cautions before charging your device.

---

### IMPORTANT!

- Use only the bundled AC power adapter and micro-USB cable to charge your device. Using a different AC power adapter and cable may damage your device.
  - Peel off the protective film on the AC power adapter and micro-USB cable before using it with your device.
  - Ensure to plug the AC power adapter to a compatible power outlet. You can plug the AC power adapter to any compatible 100~240 V outlet.
  - The output voltage of the AC power adapter for this device is DC 5V, 2A, 10W.
  - When using your device while plugged-in to a power outlet, the power outlet must be near your device and easily accessible.
  - To conserve electricity, unplug the AC power adapter from power outlet when not in use.
  - Do not place heavy objects on top of your device.
- 


### CAUTION!

- While charging, your device can become warm. This is normal, however, if your device becomes unusually hot, disconnect the micro-USB cable from your device and send the device, including the AC power adapter and cable to an ASUS-qualified service personnel.
  - To prevent any damage to your device, AC adapter, or micro-USB cable, ensure that all of these are connected properly before charging.
- 

## PadFone Charging Policy

You can change how the PadFone Station charges the battery of the phone by selecting a charging mode.

To change the PadFone Charging Policy:

1. Tap  to go to the All apps screen then tap **Settings**.
2. Tap **ASUS customized settings > PadFone Settings > PadFone Charging Policy**

3. Tap a preferred mode for charging.

## PadFone Charging Modes

### Intelligent Mode (Default/Recommended)

- When the phone's battery is greater than 90%, the PadFone Station will not charge the phone.
- In suspend mode, the PadFone Station will charge the phone when the following conditions are met:
  1. If the phone's battery is less than 70%.
  2. If the phone's battery is less than 90% of the PadFone Station's current charge.
- When the phone is inserted into the PadFone Station and reaches a charge lower than 15%, the PadFone Station will charge the phone until the battery is at 20%.

---

**IMPORTANT:** The PadFone Station will stop charging the phone's battery when it reaches 90% or the charge is higher than the PadFone Station's current charge.

---

### Phone Preferred Mode

- When the phone is inserted into the PadFone Station, the phone will use the PadFone Station's battery power.
- When the phone's battery is lower than 70%, the PadFone Station will charge the phone's battery until it reaches 90%.

### Power Pack Mode

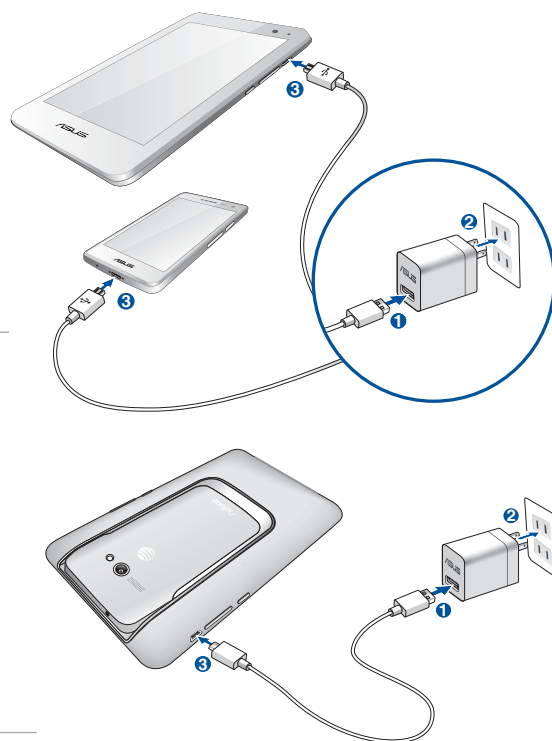
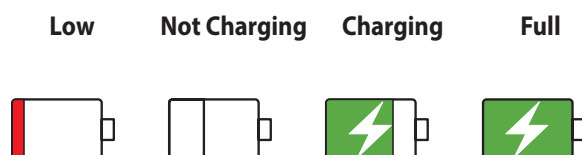
- The PadFone Station's screen will switch off as it charges the battery of the phone. Press and hold the power button of the PadFone Station for 2 seconds to resume tablet use.
- When the phone's battery is lower than 70%, the PadFone Station will charge the phone's battery until it reaches 90%.
- When the phone is off, the PadFone Station will not charge the phone's battery.

### To charge your device:

1. Connect the micro USB cable to the AC power adapter.
2. Plug the AC power adapter to a grounded power outlet.
3. Connect the micro USB cable to your phone or your PadFone Station separately, or to the PadFone Station with the phone inserted.

#### IMPORTANT!

- Charge your device for eight (8) hours before using it in battery mode for the first time.
- The status of battery charge is indicated by the following icons:



4. When fully-charged, disconnect the USB cable from your device first before unplugging the AC power adapter from the power outlet.

#### NOTES:

- You can use your device while charging but it may take longer to fully charge the device.
- Charging your device via USB port of a computer may take longer to fully charge the device.
- If your computer does not provide enough power for charging via USB port, charge your device using the AC power adapter plugged to a power outlet instead.

## Inserting/removing your phone into/from your tablet

---

**CAUTION!** Do not add a protective film or cover to your phone as it may be difficult to insert/remove the phone to/from the tablet.

---

---

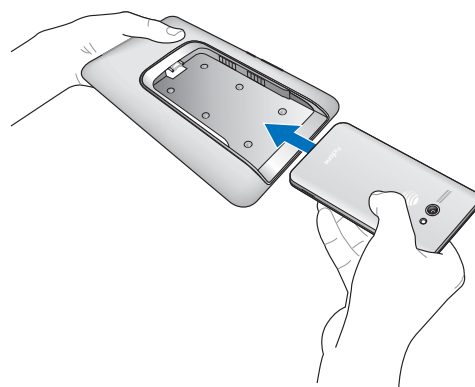
**NOTE:** Always keep the tablet's phone bay clean to prevent dust or dirt from scratching or damaging your phone.

---

### To insert your phone into your tablet:

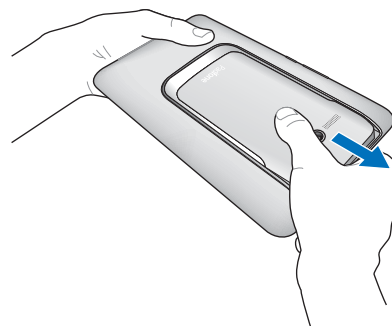
1. Align your phone into the phone bay sliding track with its microUSB port facing toward the phone bay.
2. Insert your phone all the way into the bay until it is securely connected to the tablet. Your phone briefly vibrates when the connection is secured.

Once securely connected, apps' screens automatically adjust to work in a tablet environment.



### To remove your phone from your tablet:

Remove your phone out from your tablet.



## Turning your device on or off

### Turning your device on

To turn your device on, press and hold the power button until your device vibrates and starts up.

---

**NOTE:** Your tablet automatically turns on once you insert your phone that is already active.

---

---

**WARNING!** If you forgot your personal screen unlock pattern or no data connection is available, you will have to reset your device. Resetting your device will result in data loss.

---

### Turning your device off

To turn your device off:

1. If your screen is turned off, press the power button to turn it on. If your screen is locked, unlock the device screen.
2. Press and hold the power button, then when prompted, tap **Power off** then tap **OK**.

### Sleep mode

To put your device in sleep mode, press the power button once until the screen turns off.

## First time use

When you turn your device on for the first time, Setup Wizard will guide you through the setup process. Follow the on-screen instructions to select your language, select input methods, setup your mobile network and Wi-Fi, sync accounts, and configure your location services.

Use your Google or ASUS account to setup your device, if you do not have a Google or ASUS account yet, go ahead and create one.

### Google Account

Using a Google Account allows you to fully utilize these Android OS features:

- Organize and see all your information from anywhere.
- Automatically backup all your data.
- Leverage Google services conveniently from anywhere.

### ASUS Account

Having an ASUS Account gets you to enjoy the following perks:

- Personalized ASUS support service and warranty extension for registered products.
- Free 5 GB of Cloud storage space.
- Receive the latest device and firmware updates.

---

**NOTE:** You can also use the Setup Wizard to reconfigure your device, any time at your convenience. From the Home Screen go to **All Apps > Setup Wizard**.

---

### **Battery power conservation tips**

The battery charge is the lifeline of your device. Here are some battery power conservation tips that helps preserve the power of your device battery.

- When not in use, press the power button to put the device in sleep mode.
- Activate Smart saving in Power Saver app.
- Set audio to Power saving mode.
- Decrease brightness of display.
- Keep the speaker volume to a low level.
- Disable Wi-Fi feature.
- Disable Bluetooth feature.
- Disable GPS.
- Disable the screen auto-rotate feature.
- Disable all auto-sync features in your device.



## Using your device

### Phone mode

Use your phone to enjoy the latest features and technologies of Android 4.4.2 operating system. Do work and play on your phone to fully appreciate the tons of interactive applications and features, and the seamless connectivity solutions in data sharing and communication that Android 4.4.2 has to offer.

---

**IMPORTANT!** Before you start, ensure that you have read all the care and safety instructions to prevent injury or damage to your device.

---

### Unlocking your phone

Swipe the screen to unlock.

### DynamicDisplay mode

Install your phone into your tablet to extend its battery life and work on a tablet environment. Your device provides you with the DynamicDisplay function that optimizes an app's display for it to fit in tablet mode.

---

**NOTES:**

- Some app screens, such as **Browser**, **Calendar**, **PixelMaster Camera**, or **Calculator** optimizes to fit in tablet mode. Other app screens, such as **Play Store**, **Maps**, or **Youtube** do not optimize in tablet mode.
  - For details on configuring the DynamicDisplay settings, refer to the section **DynamicDisplay**.
- 

---

**IMPORTANT!** Your phone must be inserted into the tablet for the tablet to work.

---

### Unlocking your tablet

Swipe the screen to unlock.

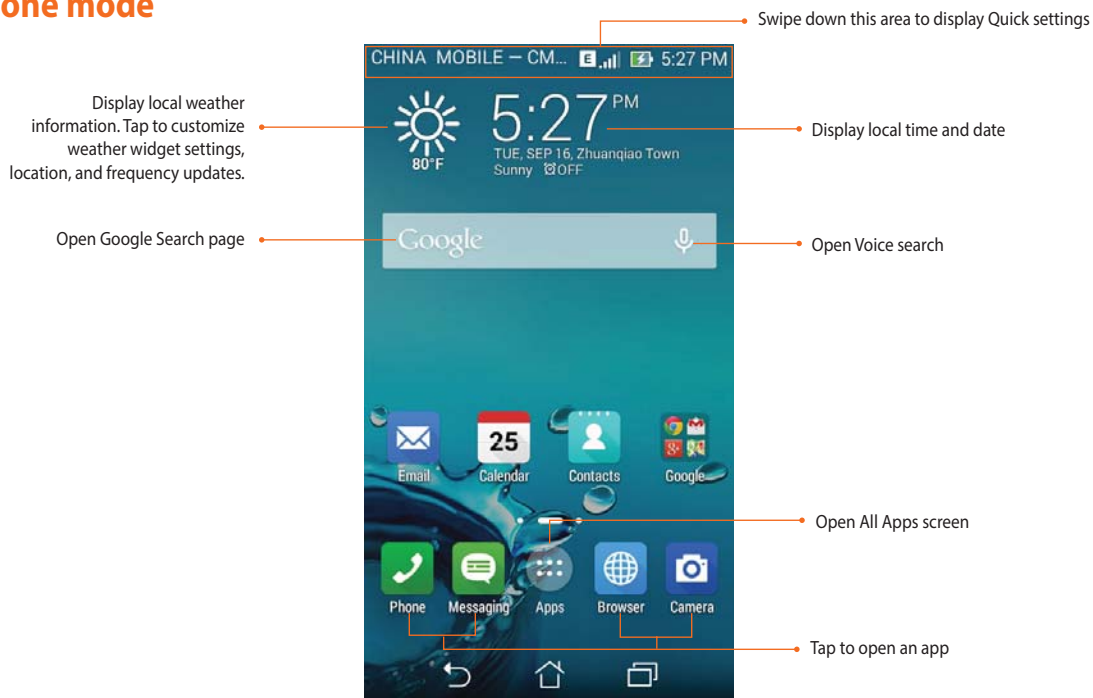










*There's no place like Home*

## Home features

### Phone mode



At the bottom of the home screen, you'll find three navigation icons , , . These icons, which are always available on the system bar, allow you to instantly return to a previous page, jump back to the home screen, or launch a recent app.

Icon	Description
	Allows you to go back to the previous screen, until you are in the home screen.
	Opens your home screen.
	Opens a thumbnail list of your most recent apps. To launch an app, tap the thumbnail image. If you wish to remove a thumbnail app, swipe it to the left or right.

## Tablet mode



## Using gestures

Use your fingers to launch apps, move icons, select menu items, press buttons, type on the onscreen keyboard, and perform other useful gestures on your device's touchscreen.

To key in or type something, tap the part where you need to type and the onscreen keyboard will pop up.

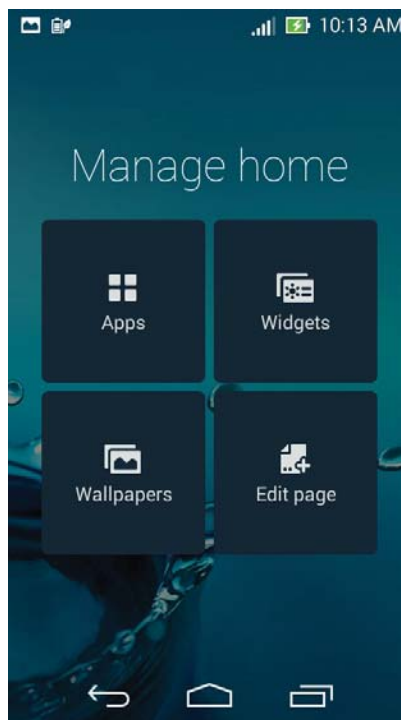
The following table describes more useful gestures.

Gesture	Description
Pinch	Place two fingers on the screen and spread them apart to zoom in and bring them together to zoom out. This gesture can be used in selected apps, including Maps, Gallery, and Browser.
Drag	Tap and hold an icon or item then, without lifting your finger, move your finger on the screen to move the icon or item.
Tap and hold	Tap and hold an item until an action occurs.
Swipe or slide	Quickly move your finger across the screen in one sweeping motion.

## Managing your home

Stamp your own personality to your Home screen. Select an attractive design as your wallpaper, add shortcuts for quick access to your fave apps, and add widgets for a quick review of important info. You can also add more pages so you can add and quickly access or review more apps or widgets on your Home screen.

- To add items to home, tap and hold an empty area on your Home screen and select any of these categories: **Apps**, **Widgets**, **Wallpapers**, and **Edit page**.
- To go through the pages of your Home screen, swipe left or right.



## App shortcuts

Add shortcuts to quickly access your often-used apps right from your Home screen.

To add an app shortcut:

1. Tap and hold an empty area on your Home screen and select **Apps**.
2. From **All Apps**, tap and hold an app, then drag it to an empty area on your **Home screen**.

To remove an app shortcut:

From your **Home screen**, tap and hold an app, then drag it to **X Remove** on the top of your screen.

## Widgets

Add widgets for a quick review of your calendar, maps, battery status, and more.


To add a widget:

1. Tap and hold an empty area on your Home screen and select **Widgets**.
2. From **Widgets**, tap and hold a widget, then drag it to an empty area on your Home screen.

To remove an app shortcut:

From your **Home screen**, tap and hold a widget, then drag it to **X Remove** on the top of your screen.

---

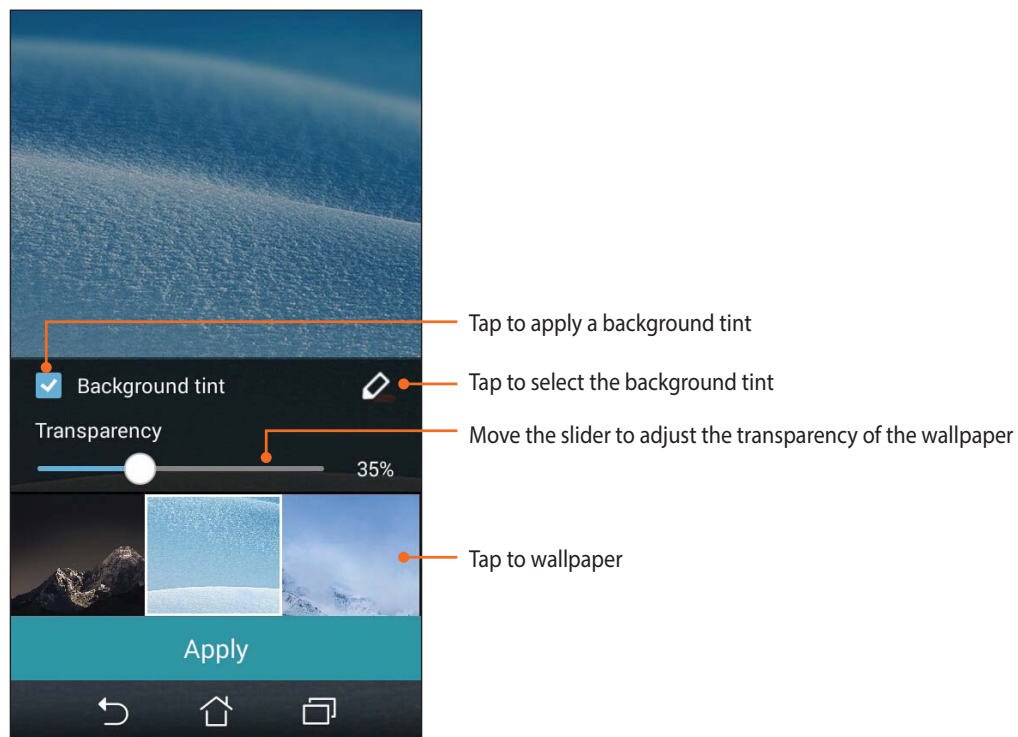
**NOTE:** You can also tap  on your Home screen to view **All Apps** and **Widgets**.

---



## Wallpapers


Let your apps, icons, and other elements sit on an attractively designed wallpaper. You may add a translucent background tint to your wallpaper for readability and clarity. You can also select an animated wallpaper to make your screen come alive.



### Applying wallpaper and background tint


To apply wallpaper and background tint:

1. Tap and hold an empty area on your Home screen and select **Wallpapers**.
2. Select where you want your wallpaper: on your **Home screen**, **Lock screen**, or **Home and lock screen**. If you do not want to add a background tint to your wallpaper, skip to step 5.

3. Tick **Background tint**, then adjust the transparency level.
4. Tap  then select a color.
5. Select a wallpaper, then tap **Apply**.

---

**NOTES:**

- A background tint can be applied to your **Home screen**, or **Home and lock screen**.
  - You can also set up your wallpaper settings from  > **Settings** > **Display** > **Wallpaper**.
- 

### Applying an animated wallpaper

To apply an animated wallpaper:

1. Tap and hold an empty area on your Home screen and select **Wallpapers**.
2. Select where you want your wallpaper: on your **Home screen**, or **Home and lock screen**.
3. Select an animated wallpaper, then tap **Apply**.

---



**NOTE:** You can also set up your wallpaper settings from  > **Settings** > **Display** > **Wallpaper**.

---

## Extended Home screen

### Extending your Home screen

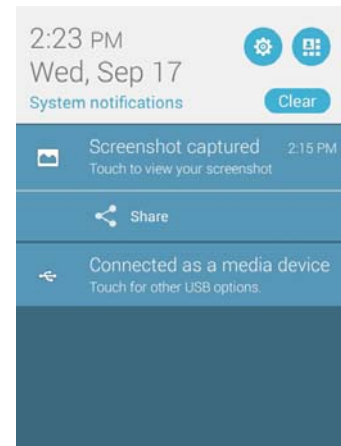
You can add more pages to extend your Home screen and put more app shortcuts and widgets on it.

1. Tap and hold an empty area on your Home screen and select **Edit page**.
2. Tap  to add a new page. If you wish to delete an extended Home screen, select then drag and drop it into .


## Managing notifications

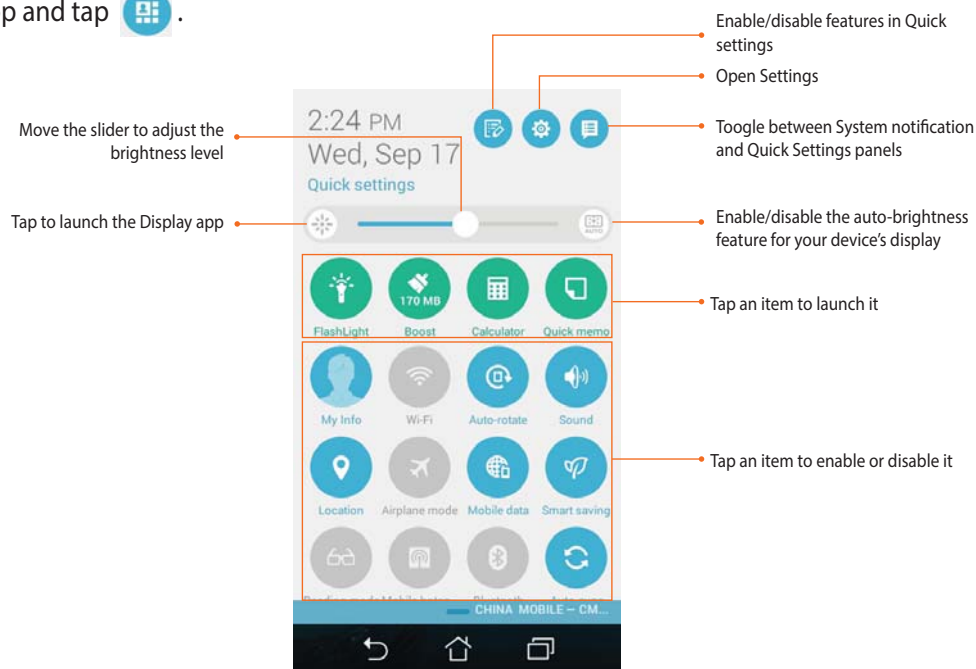
Notifications alerts you about new messages, calendar events, media service connections, PC sync information, alarms, and more.

- To see your notifications, swipe your finger down from the top of the screen.
- Swipe a notification to the right or to the left to remove the item from the list.



## Quick Settings

Quickly enable or disable functions or apps from ASUS Quick Settings. To launch ASUS Quick Settings, swipe from the top and tap .



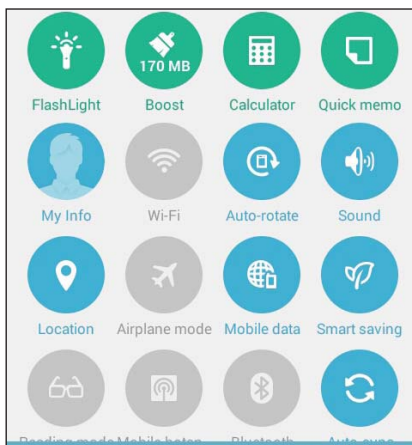
## Using the Quick settings Notification Panel

The Quick settings Notification Panel provides a one-tap access to some of the apps, wireless features and settings of your PadFone. Each of these features are represented by a button.

---


NOTE: A blue button indicates that the feature is currently enabled while a gray button indicates a disabled feature. Tap the green button to launch the app.

---



## Adding or removing buttons

To add or remove existing buttons from the ASUS Quick Settings notification panel:

1. Launch Quick settings then tap .
2. Tap the box beside the feature to add or remove it from the ASUS Quick Setting Notification Panel.

---

NOTE: A checked box indicates that the feature's button is accessible via the ASUS Quick Settings Notification Panel while an unchecked box means the opposite.



---

3. Tap  to go back and view the current ASUS Quick Settings Notification Panel.

## Setting up the date and time

By default, the date and time displayed on your Home screen automatically syncs with your mobile provider's settings.



To change the date and time settings:

1. Launch the Settings screen by doing any of the following:
  - Launch Quick settings then tap .
  - Tap  > Settings.
2. Scroll down the Settings screen and select **Date & time**.
3. Deselect **Automatic date & time** and **Automatic time zone**.
4. Select the time zone and manually set the date and time.
5. You can opt to use the 24-hour format, if you prefer.
6. Select the date format that you want to display.

## Setting up your ringtone and alert sounds

Set up the sound for your phone ringtone, notifications such as text messages, emails, and event alerts. You can also choose to enable or disable the dial pad touch tones, touch sounds, screen lock sound, or you can choose to have your Zen device vibrate when you tap on it.


To set up the sound settings:

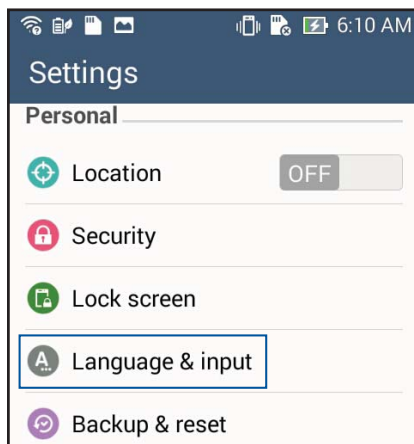
1. Launch the Settings screen by doing any of the following:
  - Launch Quick settings then tap .
  - Tap  > Settings.
2. Scroll down the Settings screen and select **Sound**.
3. Set up your preferred sound settings.


## ASUS keyboard settings

Create SMS messages, emails, and log-in passwords using the touch keyboard.

To access the ASUS keyboard settings:

1. Launch Quick settings then tap .
2. Scroll down the Settings screen and select **Language & input**.



3. Tap  beside ASUS Keyboard.
4. Configure the settings according to your personal preferences.

## Voice Search

Make voice commands to your PadFone then watch it listen and take action using the Voice Search app. Using Voice Search, you can make voice commands to accomplish the following:

- Search for data and information online or on your PadFone
- Launch apps inside your PadFone
- Get directions going to a location

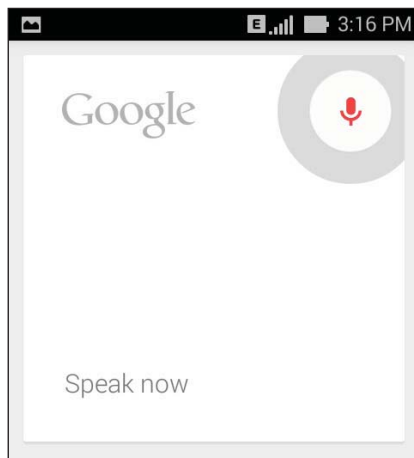
---

**IMPORTANT!** Your PadFone must be connected to the Internet to be able to use this feature.

---

## Launching Voice Search

1. Tap **⋮** > **Voice Search**.
2. Once the mic icon turns red, start saying your voice command.





---

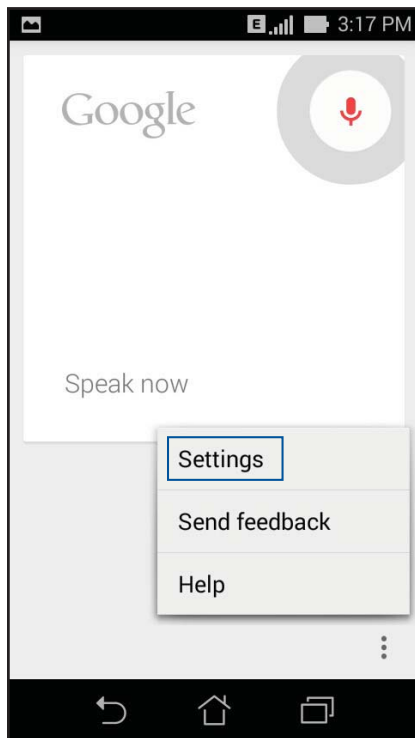
**NOTE:** Speak clearly and use concise phrases when talking to your PadFone. It also helps to start your commands with a verb related to the PadFone feature you want to use.

---

## Customizing voice search results from the Phone search group

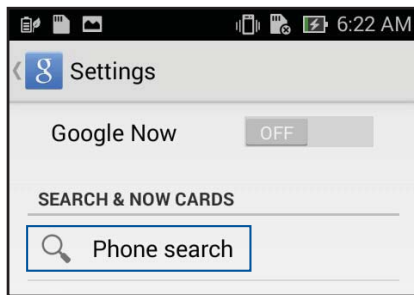
If you want to set parameters for the voice search results gathered from your Google account and your PadFone's data, you may do so using the following steps:

1. On your PadFone's home screen, tap  > **Voice Search**.
2. Tap  > **Settings**.

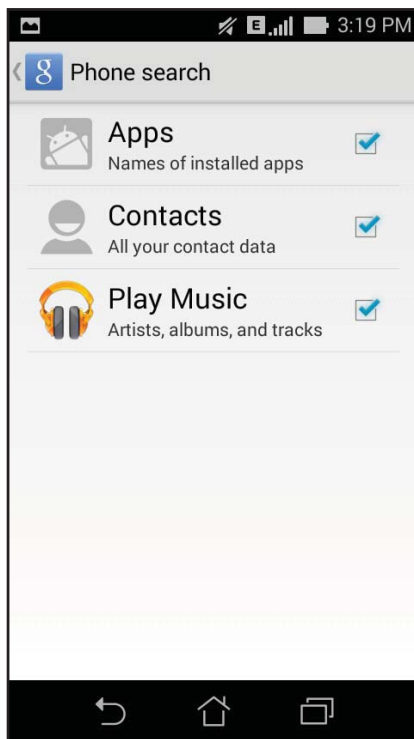




3. Tap **Phone search**.



4. Tick the box of the search groups you would like to include as source when using Voice Search.




## Lock Screen

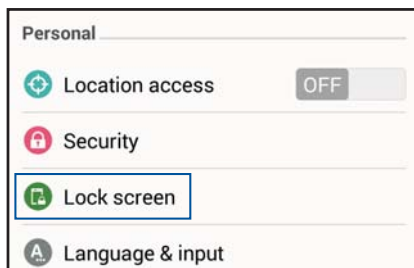
By default, the lock screen appears after turning on your device and while waking it up from sleep mode. From the lock screen, you can proceed to your device's Android® system by swiping on your touch screen panel.

Your device's lock screen can also be customized to regulate access to your mobile data and apps.

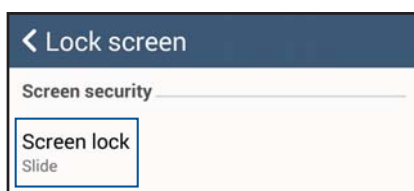
### Customizing your lock screen

If you want to change your lock screen settings from the default Swipe option, refer to the following steps:

1. Launch Quick settings then tap .
2. Scroll down the Settings screen and select **Lock screen**.



3. In the next screen, tap **Screen lock**.




4. Tap the screen lock option you would like to use.

## DynamicDisplay


Manage how apps react when you insert or remove your phone from your tablet.

**To configure the DynamicDisplay settings:**

1. Swipe your finger down from the top of the screen and tap .
2. Tap **ASUS customized settings > PadFone Settings > DynamicDisplay list**.
3. Select an app from the list to keep it running when you insert your phone to your tablet.

## Power Management

See how much power running apps are consuming and manage your power settings.

1. Swipe your finger down from the top of the screen and tap .
2. Tap **Power management**.



3


*Call in style*

## Managing contacts

Add, import, or export your contacts from your SIM or email accounts to your PadFone and vice-versa.


### Adding contacts

#### To add contacts:



1. Tap **Contacts** app from the Home screen then tap .
2. On the **Add contact** screen, key in the details of the new contact, then tap **Done** to save your contact to AT&T Address Book.

### Importing / exporting contacts

#### To import / export contacts:

1. Tap **Contacts** app from the Home screen then tap  > **Manage contacts**.
2. Tap **Import/export** then select from the following importing options:
  - a. Import from SIM card
  - b. Export to SIM card
  - c. Import from storage
  - d. Export to storage
3. Tick to select the contacts that you wish to import / export and when done, tap **Import** / **Export**.

### AT&T service contacts

1. Tap **Contacts** app from the Home screen then tap **AT&T Service Contacts**.
2. Tap  to call or  to send a text message to the AT&T service.

## Making and receiving calls

### Making a call

Your phone and tablet offers you many ways to make a call. Call your friends from saved contacts list, dial a phone number directly, or even dial a number without keying in a passcode on the lock screen.

---

**NOTES:**

- Use a Bluetooth headset when making or receiving calls on your tablet.
  - When using a Bluetooth headset with your tablet, ensure that your tablet and Bluetooth headset have been paired. For details, refer to the section **Using Bluetooth**.
- 

### Calling from Contacts app

Use the Contacts app to make a call from your contacts list.

To call via the Contacts app:

1. Tap **Contacts** app then look for the contact name that you wish to call.

---

**NOTE:** To view all contacts from all contact accounts, tap **Contacts to display** dropdown list then tick all accounts.


---

2. Tap the contact name then tap the number.

### Dialing a phone number

Use the Phone app to directly dial a phone number.

To call via the Phone app:




1. There are two ways to launch **Phone** app depending on the status of your device:
  - If your device is active, tap **Phone** app from your Home screen then tap the number keys.
  - If your device is locked, drag  to any direction to launch **Phone** app then tap the number keys.
2. Tap **Call** to dial the number.

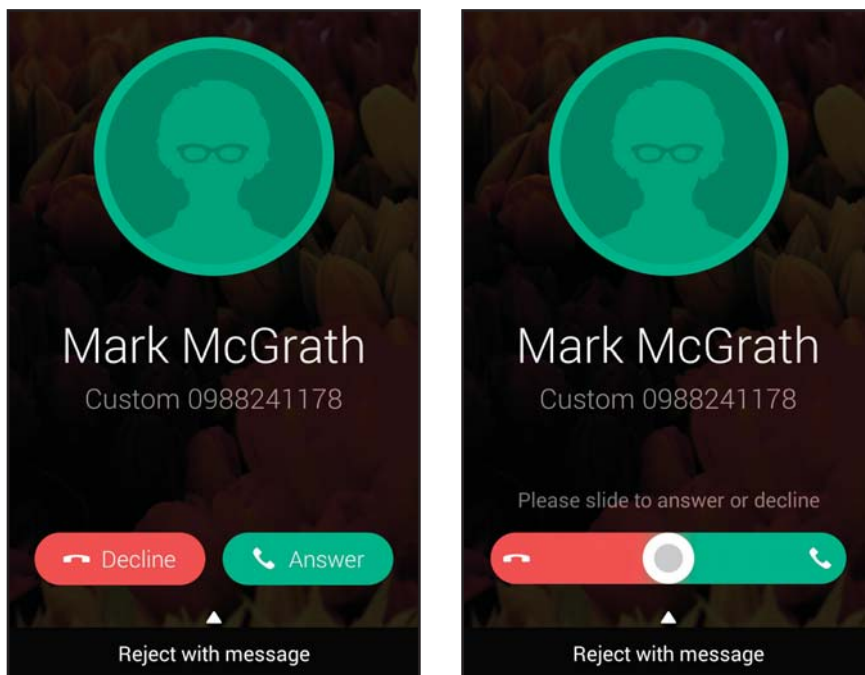
## Receiving a call

The touch screen of your phone or tablet lights up when there is an incoming call. The display of the incoming call also varies, depending on the status of your device.

## Answering a call

There are two ways to answer a call depending on the status of your device:

- If your device is active, tap **Answer**. To reject a call, tap **Decline**.
- If your device is locked, drag  to  to answer or to  to reject the call.



---

**NOTE:** You can also send a message to reject the call. Swipe up **Reject with message** then select from the displayed options to send the message.

---





## Backup/restore call logs

Have your call logs stored in your PadFone to track the calls that you've received, made, or missed. You can also send the saved call logs to your online storage account or e-mail it via the installed e-mail apps in your PadFone.




### Creating a call log backup

To back up call logs:

1. From the Home screen, tap **Phone** then tap  to hide the keypad.
2. Tap  then tap **Backup call log**.
3. Tap **Backup call log to device** to save the call log backup in your PadFone. To email the call log backup, tap **Backup call log to device and send out**.
4. Key in a backup file name then tap **OK**. After the backup is successful, tap **OK**.

### Restoring call log backups

To restore call log backups:

1. From the Home screen, tap **Phone** then tap  to hide the keypad.
2. Tap  then tap **Restore call log**.
3. Select a call log backup that you want to restore, then tap **OK**.
4. After restoring call log is successful, tap **OK**.
5. Tap  to view the restored call logs.

## Voicemail

Get voicemail messages on your phone or on your tablet.

### To get your voicemail messages:

Tap **Settings** > **Call Settings** > **Voicemail**. Press and hold 1 on the keypad to access your voicemail.


**4**  
*Send messages and more*

## Messaging

Messaging lets you send, promptly reply, or reply at a later time to important messages from your contacts in the SIM card installed on your device. You can also email your message threads or conversations to others to keep them in the loop.

### Sending or replying to messages

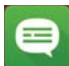


**To start a message thread:**

1. From the Home screen, tap , then tap **+**.
2. In the **To** field, enter the number or tap **+** to select a contact from your list.
3. Start composing your message in the **Type message** field.
4. When done, tap the arrow to send your message.

## Setting up your messaging options


You can forward a message thread or conversation to others, and set an alert so you can reply to an important message at a convenient time.

To forward an SMS conversation:

1. From the Home screen, tap .
2. Tap to select a sender image, then tap  > **Forward SMS conversation**.
3. Tap **Select All** or any of the messages from the thread, then tap **Forward**.
4. In the **To** field, tap  to select a contact's email address or mobile number.
5. When done, tap the arrow to send your message. The conversation will be forwarded as an MMS (Multimedia Messaging Service) message.


---

### NOTES:

- Ensure that you have MMS subscription with your mobile service provider.
  - Ensure that data access is enabled on your device. From your Home screen, tap  > **Settings** > **More...** > **Mobile networks**, then tick **Data enabled**.
  - Mobile data and messaging rates apply when forwarding conversations to others.
- 

To set a message as a reply-later task:

When you receive an important message at an untimely time, you can add it to your to-do list so you can reply to it at a later time.

1. In the message screen, tap .
2. Tap **Reply later**. The message is added to your **Do It Later** tasks.
3. When you're ready to reply to the message, go to the **Do It Later** app from **All Apps**.



5

*Access your emails*

## Email

Add Exchange, Gmail, Yahoo! Mail, Outlook.com, Microsoft Hotmail, or other POP3/IMAP accounts so you can receive, create, and browse emails right from your device. You can also sync your email contacts from these accounts to your PadFone.

---

**IMPORTANT!** You must be connected to the Internet so you can add an email account or send and receive emails from added accounts.

---

### Setting up an email account

To set up an email account:

1. From the Home screen, tap **Email** to launch the Email app.
2. Tap the mail provider you want to setup.
3. Key in your email address and password and tap **Next**.

---

**NOTE:** Wait while your device automatically checks your incoming and outgoing mail server settings.



---

4. Configure the Account settings such as inbox checking frequency, sync days, or notification for incoming emails. When done, tap **Next**.
5. Key in an account name that you want to be displayed in the outgoing messages, then tap **Next** to log into your inbox.



## Adding email accounts

To add other email accounts:

1. From the Home screen, tap **Email** to launch the Email app.
2. Tap  > **Settings**, then tap  to add an email account.
3. Tap the mail provider you want to setup.
4. Follow the succeeding instructions to complete setting up your new email account.

---

**NOTE:** You may also refer to steps 3 to 5 in the **Setting up an email account** section of this manual to complete this setup process.

---

## Gmail

Using the Gmail app, you can create a new Gmail account or synchronize your existing Gmail account so you can send, receive, and browse emails right from your device.

### Setting up a Gmail account

1. Tap **Google** from the Home screen then tap **Gmail**.
2. Tap **Existing** and key in your existing Gmail account and password, then tap ►.

---

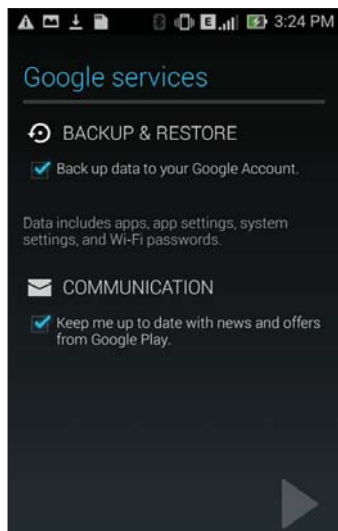
#### NOTES:

- Tap **New** if you do not own a Google account.
  - When signing in, you have to wait while your device communicates with Google servers to setup your account.
- 
3. Use your Google account to backup and restore your settings and data. Tap ► to sign in to your Gmail account.

---

**IMPORTANT!** If you have several email accounts aside from Gmail, use Email app to set up and access all your email accounts.

---



6

*Capture moments*

## Launching the PixelMaster Camera app

Capture images and record videos using your PadFone's PixelMaster Camera app. Refer to any of the steps below to open the PixelMaster Camera app.

### From the lock screen

Drag down  until the PixelMaster Camera app is launched.

### From the home screen

Tap **PixelMaster Camera**.

### Using the volume key

While your PadFone is on sleep mode, double-click the volume key to wake it up and immediately launch the PixelMaster Camera app.

---

**NOTE:** Before using the volume key to launch the PixelMaster Camera app, enable this function from **Settings > Lock screen**, then slide **Instant Camera** to **ON**.

---

## Using PixelMaster Camera for the first time

After launching the PixelMaster Camera for the first time, two consecutive features appear to help you get started: Tutorial and Image locations.


### Tutorial

If it is your first time to use your PadFone's camera, you will encounter the following tutorial screen after launching the PixelMaster Camera app. Refer to the following steps to proceed from this screen.

1. On the Tutorial screen, tap **Skip** if you want to skip viewing or **Start** to view the basic tutorial about using PixelMaster Camera.
2. After tapping either of these options, you will then proceed to the Image Locations screen.

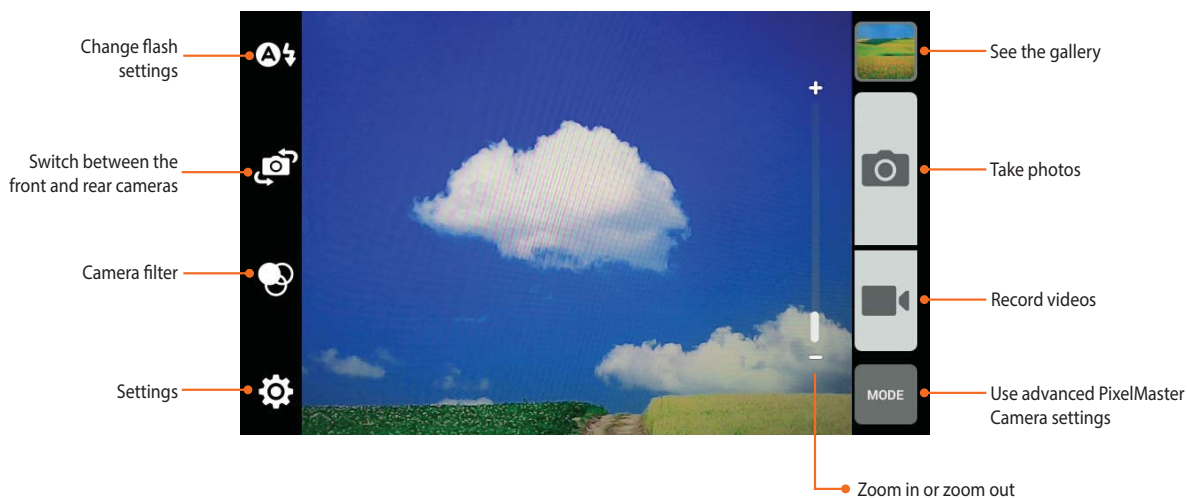
## Image Locations

After going through the Tutorial screen, the Image Locations screen appears to help you create automatic location tags for your images and videos. Refer to the following steps to proceed from this screen:

1. On the Image Locations screen, tap **No thanks** to proceed to the camera screen or **Yes** to set up location tagging for your captured images and videos.
2. Slide **Location** to **ON** to enable the location tagging feature.
3. Tap **Agree** on the next screen to fully enable the feature.
4. Tap  to go to the PixelMaster Camera screen.

## PixelMaster Camera home screen

Tap the icons to start using your camera and explore the image and video features of your PadFone.





## Image settings

Adjust the appearance of your captured images by configuring your camera's settings using the steps below.

---

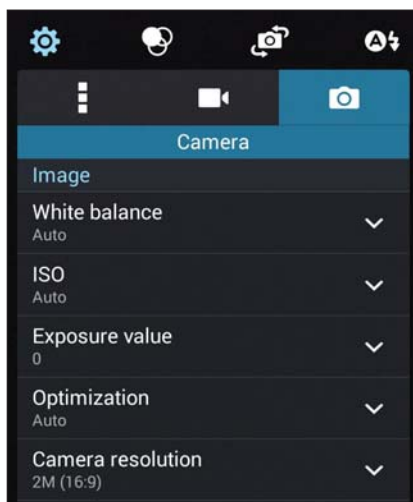
**IMPORTANT!** Apply the settings first before taking images.

---

1. On the camera's home screen, tap  > .
2. Scroll down and configure the available options.

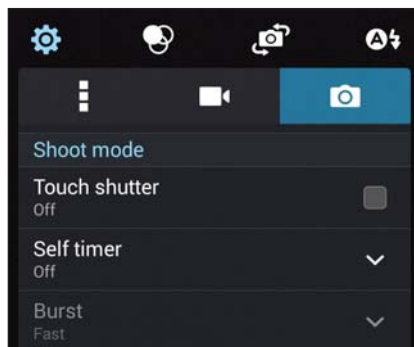
### Image

Configure the image quality using these options.



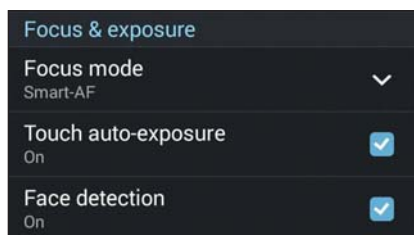
## Shoot mode

Set your shutter speed to Timer mode or change the Burst speed under this option.



## Focus & exposure

Enable Touch auto-exposure or Face detection under this option.





## Video settings

Adjust the appearance of your recorded videos by configuring your camera's settings using the steps below.

---

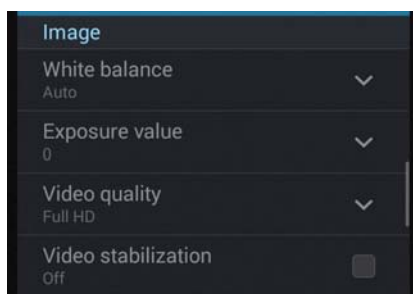
**IMPORTANT!** Apply the settings first before taking images.

---

1. On the camera's home screen, tap  > .
2. Scroll down and configure the available options.

## Image

Configure the video quality using these options.



## Focus & exposure

Enable Touch auto-exposure under this option.





## Advanced camera features

Explore new ways of capturing images or videos and make captured extra special moments using the advanced camera features of your PadFone.

---

**IMPORTANT!** Apply the settings first before taking images.

---

### Time rewind




After selecting Time rewind, your shutter starts taking burst shots two seconds before you actually press the shutter button. As a result, you get a timeline of images where you can choose the best image to save on your Gallery.

---

**NOTE:** The Time rewind feature can only be used on the rear camera.

---

### Capturing Time rewind photos

1. From the PixelMaster Camera app's home screen, tap .
2. Tap  > **Time rewind**.
3. Tap  or the volume key to start capturing photos.

### Using the Time rewind viewer

1. After pressing the shutter, the Time rewind viewer appears on the bottom of a captured photo. Rotate the button on the viewer to browse through the photos you just took.

---

**NOTE:** Tap Best to view the best photo suggestion from the timeline.

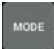


---

2. Select a photo then tap Done to save it to Gallery.

## HDR

The High-dynamic-range (HDR) feature allows you to take more detailed images for low-light and highly contrasting scenes. HDR is recommended for use when taking images on brightly lit locations, helping balance out the colors produced on your image.

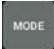


### Capturing HDR photos

1. From the PixelMaster Camera app's home screen, tap .
2. Tap  > **HDR**.
3. Tap  or the volume key to start capturing HDR photos.

## Panorama

Capture images from various angles using Panorama. Images captured from a wide angle perspective are automatically stitched together using this feature.

### Capturing panoramic photos

1. From the PixelMaster Camera app's home screen, tap .
2. Tap  > **Panorama**.
3. Tap  or the volume key then pan your phone or tablet to the left or right to capture the scenery.

---

**NOTE:** While panning your PadFone, a timeline of thumbnails appears on the lower part of your screen as it captures the scenery.

---

4. Tap  when finished.

## Night




Take well-lit photos even on night time or on low-light situations using the Night feature of your PadFone.

---

**NOTE:** Keep your hands steady while before and while the PadFone is capturing the image to prevent blurry results.

---




### Capturing Night photos

1. From the PixelMaster Camera app's home screen, tap .
2. Tap  > **Night**.
3. Tap  or the volume key to start capturing Night photos.

## Selfie

Take advantage of your rear camera's high megapixel specs without worrying about pressing the shutter button. Using face-detection, you can set your phone or tablet to detect up to four faces using the rear camera then automatically capture your selfie or group selfie.

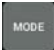


### Capturing Selfie photos

1. From the PixelMaster Camera app's home screen, tap .
2. Tap  > **Selfie**.
3. Tap  to choose how many people should be included in the photo.
4. Use the rear camera to detect faces and wait for your phone or tablet to start beeping, counting down until it captures the photo.
5. The Time rewind viewer appears onscreen on bottom of a captured photo. Rotate the button on the viewer to browse through the photos you just took.
6. Select a photo then tap **Done** to save it to Gallery.

## Beautification

Have fun during and after taking photos of your family and friends using the Beautification feature of your phone or tablet. When enabled, this feature allows you to make live beauty enhancements on your subject's face before you press the shutter button.

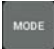






### Capturing Beautification photos

1. From the PixelMaster Camera app's home screen, tap .
2. Tap  > **Beautification**.
3. Tap  to start capturing photos that can be edited using Beautification features.

## Miniature

Simulate the tilt-shift effect of DSLR lenses via the Miniature feature. Using this feature allows you to focus on specific areas of your subject, adding a bokeh effect that can be used on both photos and video using your phone or tablet.

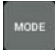


### Capturing Miniature photos

1. From the PixelMaster Camera app's home screen, tap .
2. Tap  > **Miniature**.
3. Tap  or  to select your focus area.
4. Tap  or  to increase or decrease the background blur.
5. Tap  to capture Miniature photos.

## Depth of field

Take macro shots with a soft background using the Depth of field. This feature suits close up photos of subjects for a more defined and dramatic result.






### Capturing photos with depth of fields

1. From the PixelMaster Camera app's home screen, tap .
2. Tap  > **Depth of field**.
3. Tap  or the volume key to start capturing macro photos.

## Smart remove

Eliminate unwanted details immediately after capturing the image using the Smart remove feature.




### Capturing Smart remove photos

1. From the PixelMaster Camera app's home screen, tap .
2. Tap  > **Smart remove**.
3. Tap  or the volume key to start capturing photos that can be edited using Smart remove.
4. The following screen shows the photo you captured and any removable objectes which you may want to delete from it.
5. Tap  to remove the detected objects or  to delete the photo and go back to the PixelMaster Camera app.

## All smiles

Capture the perfect smile or the wackiest facial expression from a range of photos using the All Smiles feature. This feature lets you take five consecutive photos after pressing the shutter button, automatically detecting faces on the image for comparison.




### Capturing All smiles photos

1. From the PixelMaster Camera app's home screen, tap .
2. Tap  > **All smiles**.
3. Tap  or the volume key to start capturing photos that can be edited using All smiles.
4. Follow the onscreen instructions to select your best photos.

## GIF animation

Create GIF (Graphics Interchange Format) images straight from your phone or tablet's camera using the GIF animation feature.

### Capturing Beautification photos

1. From the PixelMaster Camera app's home screen, tap .
2. Tap  > **GIF animation**.
3. Tap  to start capturing photos that can be transformed into GIF animation.

This image shows a single sheet of white paper with horizontal blue or grey ruling lines. The lines are evenly spaced and run across the width of the page. There is no handwriting or other markings on the paper.



7

*Gallery*

## Using the Gallery

View images and play videos on your PadFone using the Gallery app.

This app also allows you to edit, share, or delete image and video files stored in your PadFone. From Gallery, you can display images in a slideshow or tap to view the selected image or video file.

To launch Gallery, tap **Gallery** from the Home screen.


### Main screen

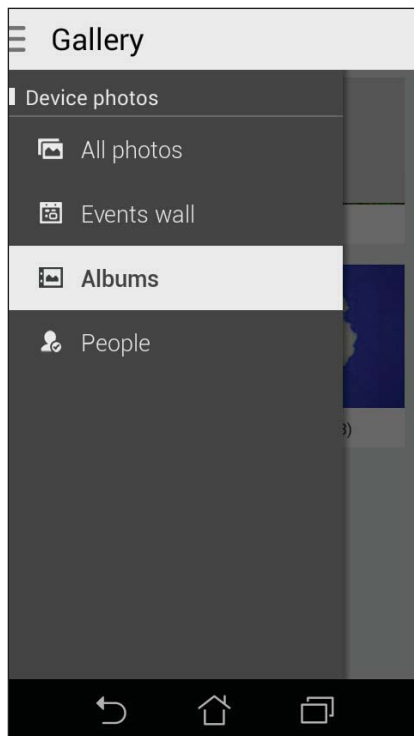


## Viewing files from other source locations

By default, your Gallery displays all the files on your PadFone according to their album folders.



To view files from other locations accessible via your PadFone:

1. From the main screen, tap .
2. Tap any of the following source locations to view their respective files.





## Sharing files from the gallery

To share files from the gallery:

1. From the Gallery screen, tap the folder where the files you want to share are located.
2. After opening the folder, tap  to activate file selection.
3. Tap the files you want to share. A check mark appears in the center of the image you select.
4. Tap  then select from the list where you want to share the images.

## Deleting files from the gallery


To delete files from the gallery:

1. From the Gallery screen, tap the folder where the files you want to delete are located.
2. After opening the folder, tap  to activate file selection.
3. Tap the files you want to delete. A check mark appears in the center of the image you select.
4. Tap  > **Delete**.

## Editing an image

The Gallery also features its own image editing tools that you can use to enhance images saved on your PadFone.

To edit an image:

1. From the Gallery screen, tap the folder where the files are located.
2. After opening the folder, tap the image you want to edit.
3. Once the image is opened, tap it again to show its functions.
4. Tap  to open the image editing toolbar.
5. Tap any of the icons on the editing toolbar to apply changes to the image.

## Zooming in/out the thumbnails or an image

From the Gallery screen or your selected image, spread apart your fingers on the touchscreen panel to zoom out. To zoom in, bring your fingers together on the touchscreen panel.

[illegible]

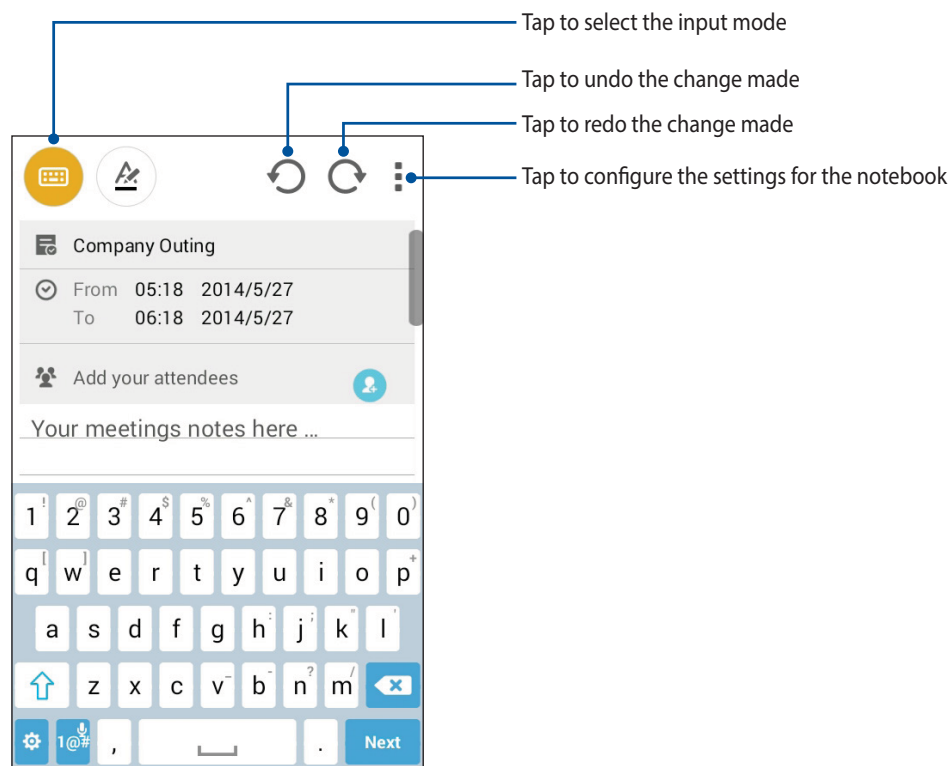


*Work hard, play harder*

## SuperNote

Turn note-taking into a fun and creative activity that syncs with your mobile data using SuperNote.

This intuitive app allows you to create notes organized per notebook by directly writing or drawing on the touchscreen. While creating notes, you can also add multimedia files from other apps and share them via social networks or your Cloud storage account.





## Understanding icons

Depending on your selected input mode, these icons appear as you take down your notes on SuperNote.



Select this type mode when you want to use the onscreen keyboard to enter your notes.



Select this write mode when you want to scribble or write your notes.



Select this draw mode when you want to create drawings or doodles.



When in draw mode, tap this icon to select the drawing tool to use, and the stroke color or size.



When in draw mode, tap this icon to erase some contents in your notes.




Tap this icon to take a photo or video, record audio, add timestamp and more to your notes.



Tap this icon to add a new page to your notebook.

## Creating a notebook

To create new files using SuperNote, refer to the following steps:

1. Tap  > **SuperNote**.
2. Tap **Add a new notebook**.
3. Name the file and select Pad or Phone as the page size.
4. Select a template and start writing your notes.

## Sharing a notebook on the Cloud

You may share your notebook on the Cloud using the following steps:

1. On the SuperNote home screen, tap-and-hold the notebook you would like to share.
2. In the pop-up screen, tap **Enable cloud sync**.
3. Input your ASUS WebStorage account's User name and Password details to proceed with syncing your notebook to the Cloud.
4. Once the notebook has been successfully synced to the Cloud, the Cloud icon appears on top of the shared notebook.

## Sharing a note to the Cloud

Aside from your notebook, you may also share individual notes from your SuperNote to your Cloud storage account. To do this:



1. Launch the notebook that contains the note you want to share.
2. Tap-and-hold the note you want to share.

3. In the pop-up screen, tap **Share** then select the type of file format you want to share it as.
4. In the next screen, select the Cloud storage account where you would like to share your note.
5. Follow the succeeding instructions to complete sharing your selected note.

## Calendar


The Calendar app enables you to keep track of important events using your PadFone. Along with creating events you may also add notes, set reminders, or create a countdown notice to ensure you don't forget these important occasions.

### Creating an event from your PadFone

1. Tap  > **Calendar**.
2. Tap **New event** to start creating a new event.
3. In the New event screen, input all the necessary details of your event.
4. Once finished, tap  to save and exit.

## Adding an account to Calendar

Aside from creating an event logged on your PadFone, you can also use Calendar to create events that get automatically synced with your online accounts. But first, these accounts must be added to Calendar using the following steps:

1. Launch **Calendar**.
2. Tap  > **Accounts**.
3. Tap the account you want to add.
4. Follow the succeeding onscreen instructions to complete adding the new account to Calendar.


## Creating an event from your account

After adding online accounts that you would like to sync with Calendar, you may now use your PadFone to create notifications for those online accounts by following these steps:

---

**NOTE:** Your online account must already be added to Calendar before you can proceed with the following steps. You may refer to the ***Adding an account to Calendar*** section in this e-manual for more details.

---

1. Tap  > **Calendar**.
2. Tap **New event** to start creating a new event.
3. In the New event screen, tap **My Calendar** to view all the accounts currently synced with the Calendar.
4. Tap the account where you would like to create a new event.
5. In the New event screen, input all the necessary details of your event.

## What's Next

Do not miss out on important events, having fun out in the sun, or getting messages/emails/calls from your favorite people. Set up your calendar of events, Favorites and VIP groups, or weather update settings to get alerts and reminders of what's next. View your What's Next alerts from the Lock screen, Systems Notification panel, and What's Next widget or app.

If you're using **What's Next** for the first time, you would have to set up your calendar account or use the Calendar app in your PadFone.

---

### NOTES:

- Set up your favorite contacts and VIP groups to receive alerts for missed calls and unread messages or emails from people who matter to you.
  - Get details on creating your calendar of events from the **Calendar** section.
  - Learn how to get weather updates from the **Weather** section.
-

## Do It Later

Get hold of even the most trivial things in your busy life. Even when you're too busy, reply to your emails, SMS messages, calls, or read news online at your convenience.

Mark your unread messages or emails, interesting web pages, and missed calls as **Reply Later**, **Read Later**, or **Call Later** items. These marked items will be added to your Do It Later tasks, and you can act on these tasks at a convenient time.

---


**NOTE:**

- Popular third-party apps that support **Do It Later** include Google Maps, Google Chrome, Google Play, YouTube, and IMDb.
  - Not all apps can share and add tasks to **Do It Later**.
- 


## Accessing or creating to-do tasks

When you've previously set a message or email as **Reply Later**, or a call as **Call Later**, or a web page as **Read Later**, you can go back to these important message/email/call/web page on the **Do It Later** app.

To access your to-do tasks:

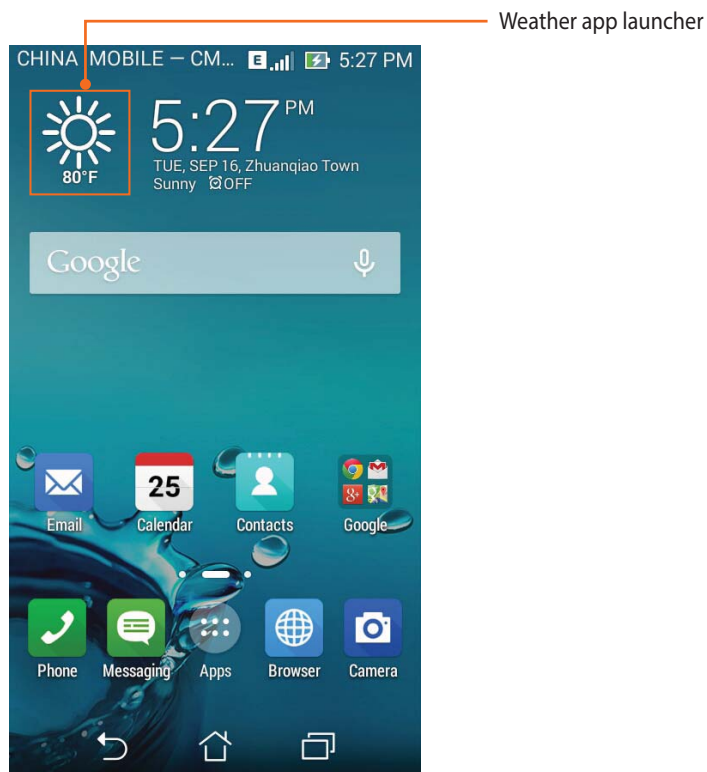
1. From the home screen, tap , then tap **Do It Later** from All Apps.
2. Select the task that you want to act on.

To create a new to-task:

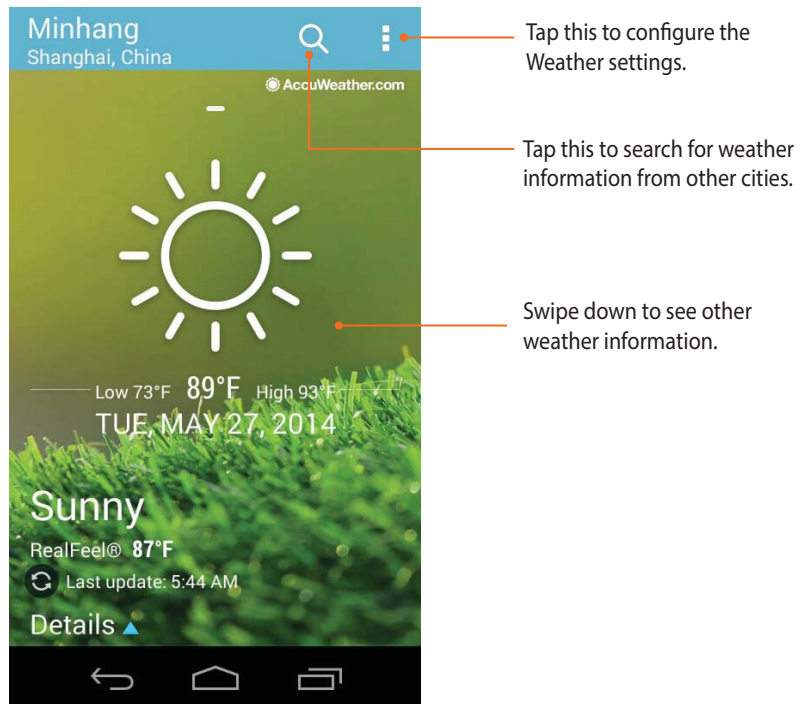
From the Do It Later screen, tap , then proceed to create your to-do task.

## Weather

Get real-time weather updates straight from your PadFone using the weather app. Using Weather, you can also check other weather details from around the world.



## Weather home screen





## Clock

Customize the time zone settings of your PadFone, set alarms, and use your PadFone as a stop watch using the Clock app.

### Launching Clock


Launch the Clock app using either of the following options:

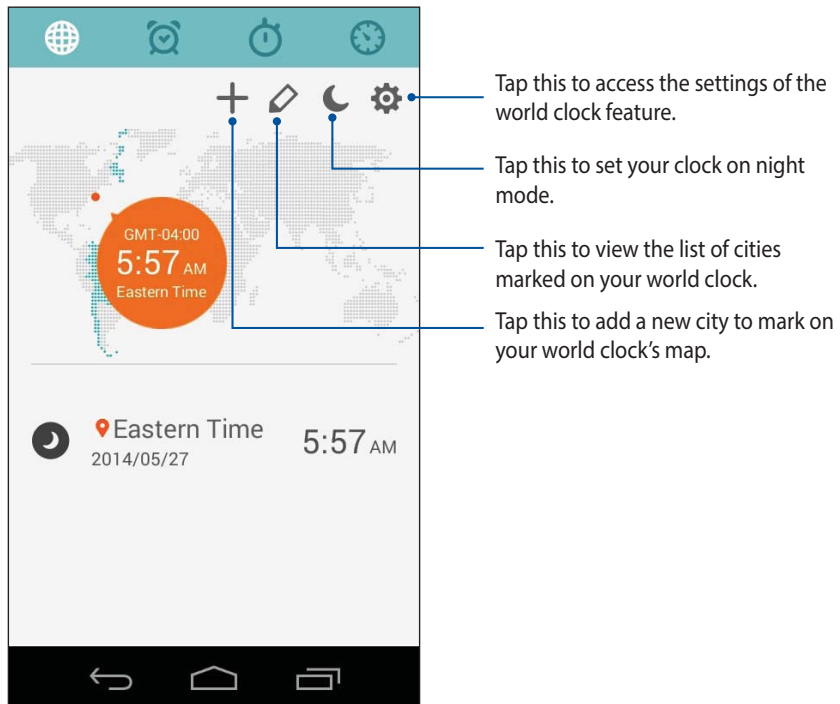
- From your PadFone's home screen, tap the digital clock display.




- Tap  > **Clock**.

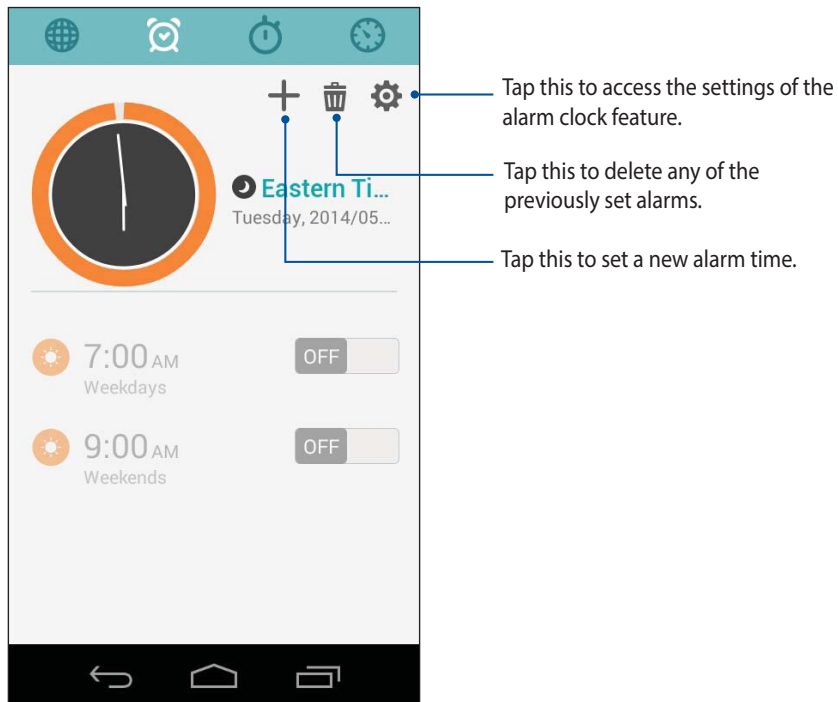
## World Clock

Tap  to access the world clock settings of your PadFone.



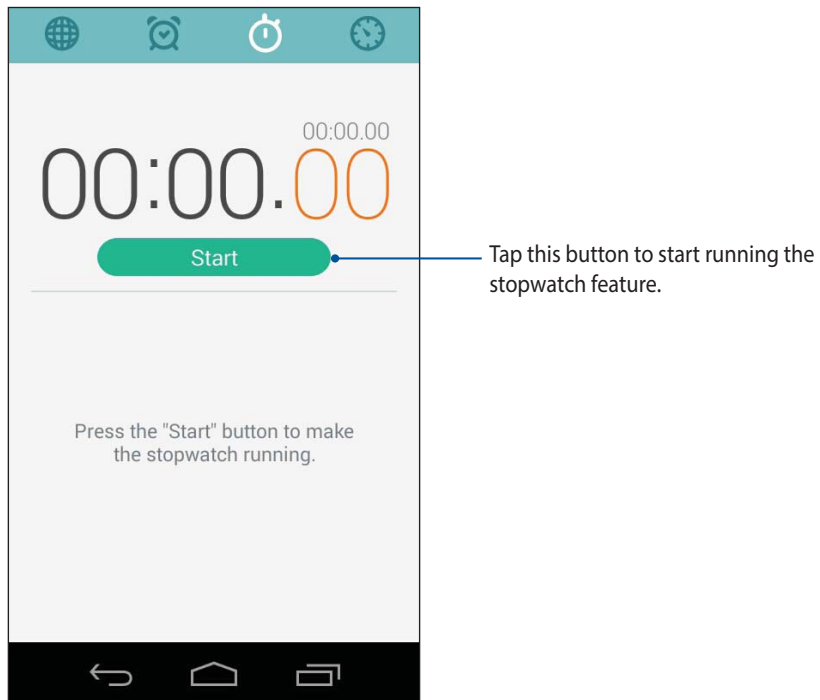
## Alarm clock

Tap  to access the world clock settings of your PadFone.



## Stopwatch


Tap  to use your PadFone as a stopwatch.

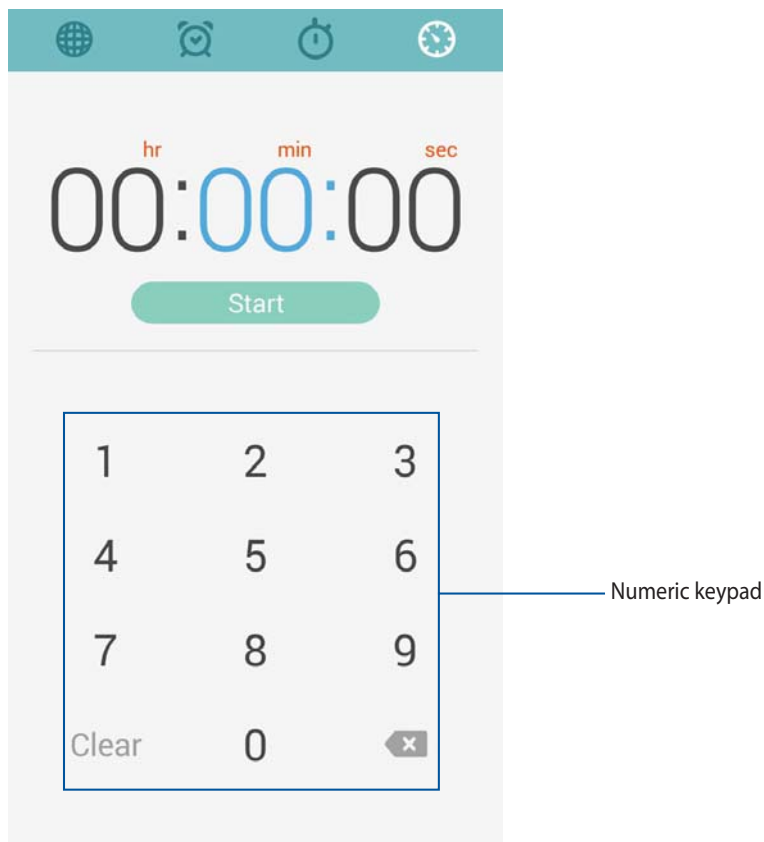


## Timer

You may set multiple timer options for your PadFone. To do this, follow the steps below:

### Setting the timer


1. Tap  to access the timer feature of your PadFone.

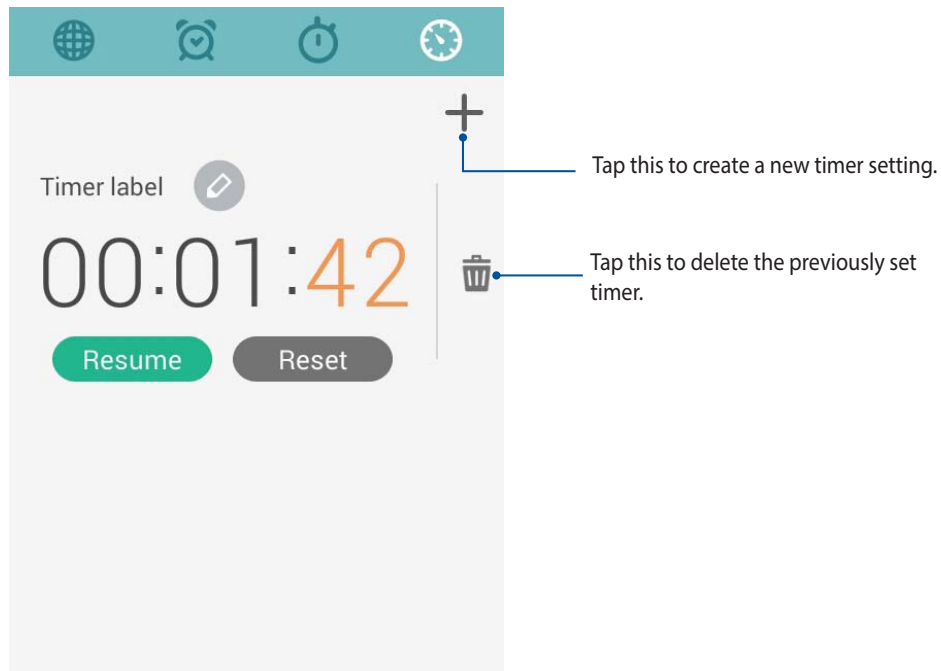


2. Use the numeric keypad to input your target time then tap **Start** to start the timer.

## Adding or deleting timer settings

You may also add new timer settings or delete existing ones that you no longer need. To do any of these options, refer to the following steps:

1. Tap  to access the timer feature of your PadFone.
2. If you previously created a timer setting, these would appear on your Timer home screen. You may delete or add new timer settings using the icons on your Timer home screen.





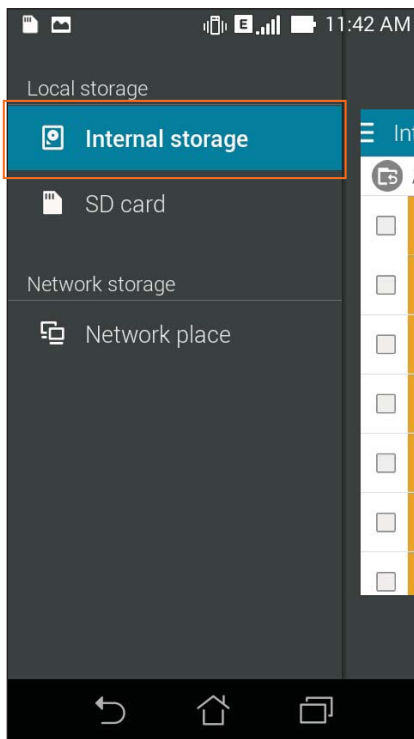
## File Manager

Using File Manager allows you to easily locate and manage your data on the internal storage of your PadFone and its connected external storage devices.

### Accessing the internal storage

To access the internal storage:

1. Tap  > **File Manager**.
2. Tap  > **Internal storage** to view the contents of your PadFone then tap an item to select.



## Accessing the external storage device



To access the external storage device:

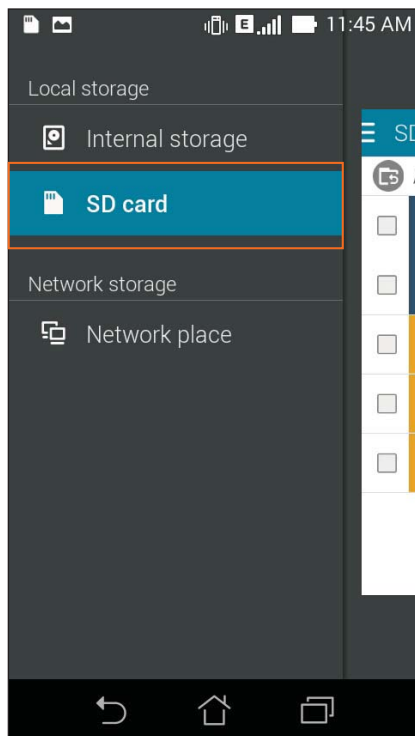
1. Insert the microSD card into your PadFone.

---

**NOTE:** For more details, refer to the *Installing a memory card* section in this user guide.

---

2. Tap  > **File Manager**.
3. Tap  > **SD card** to view the contents of your microSD card.







## Accessing the network storage

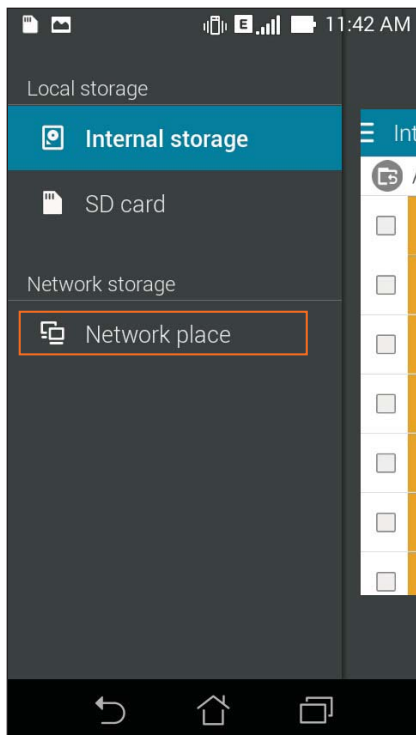
---

**IMPORTANT!** Enable Wi-Fi on your PadFone to view files from the network storage.

---

To access files saved on your network storage:

1. Tap  > **File Manager**.
2. Tap  > **Network place** to view the contents saved on your network storage.




This image shows a single sheet of white paper with horizontal blue or grey ruling lines. The lines are evenly spaced and run across the width of the page. There are approximately 20 lines visible. The paper has a slight shadow on the right side, suggesting it's resting on a surface.

# 9

## ***The Internet***

## Browser

Your browser's clean and intuitive interface makes it easier to surf web contents at a fast page loading speed via its Chrome-based browser engine. It also lets you share or email web contents, as well as send it as a read later task.

Go to page that you want to share, then tap .

- Tap share a page, tap **Share page**, then select the account or app where you want to share the page to.
- To send a page for later reading, tap **Read later**. The page is added a to-do task in your Do It Later app.

---

### NOTES:

- Ensure that your PadFone is connected to a Wi-Fi or mobile network.
  - If you connect to a mobile network, charges may apply based on your network plan.
  - Refer to section **Connecting to a Wi-Fi network** for details.
  - Access your to-do tasks from the **Do It Later** app on **All Apps**.
-

10

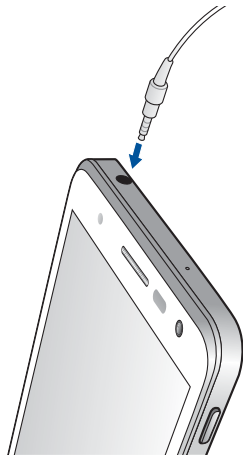
*Fun and entertainment*

## Using headset

Have the freedom to do other things while you're in a call or enjoy listening to your favorite music, using a headset.

### Connecting audio jack

Insert the 2.5mm headset jack into the audio port of your device.



---

#### **WARNING!**

- Do not insert other objects into the audio jack port.
- Do not insert a cable with electric power output into the audio jack port.
- Listening at a high volume for long periods can damage your hearing.

---

#### **NOTES:**

- We highly recommend to use only compatible headsets or the bundled headset with this device.
  - Unplugging the audio jack while listening to music, automatically pauses the music played.
  - Unplugging the audio jack while watching a video, automatically pauses the video playback.
-

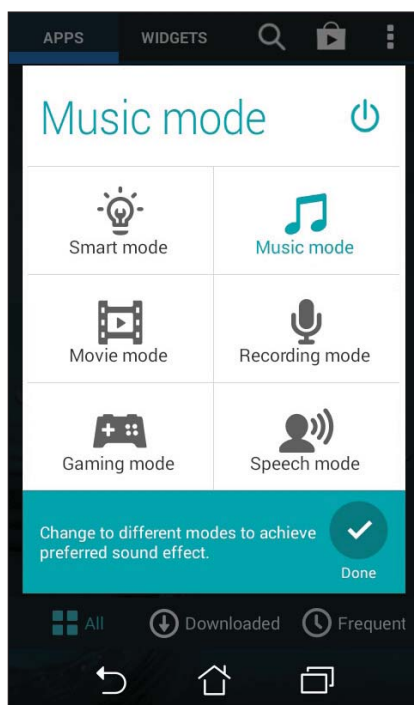
## Audio Wizard

AudioWizard allows you to customize the sound modes of your PadFone for a clearer audio output that fits actual usage scenarios.

### Using Audio Wizard

To use AudioWizard:

1. Tap **AudioWizard** from the All apps screen.
2. In the AudioWizard window, tap the sound mode you want to activate then tap **Done** to save and exit.



## Play Games

Get the latest games online and share them in your social media accounts using the Play Games app. You can also join multiplayer games and check out leaderboards for some competitive gaming fun.

---

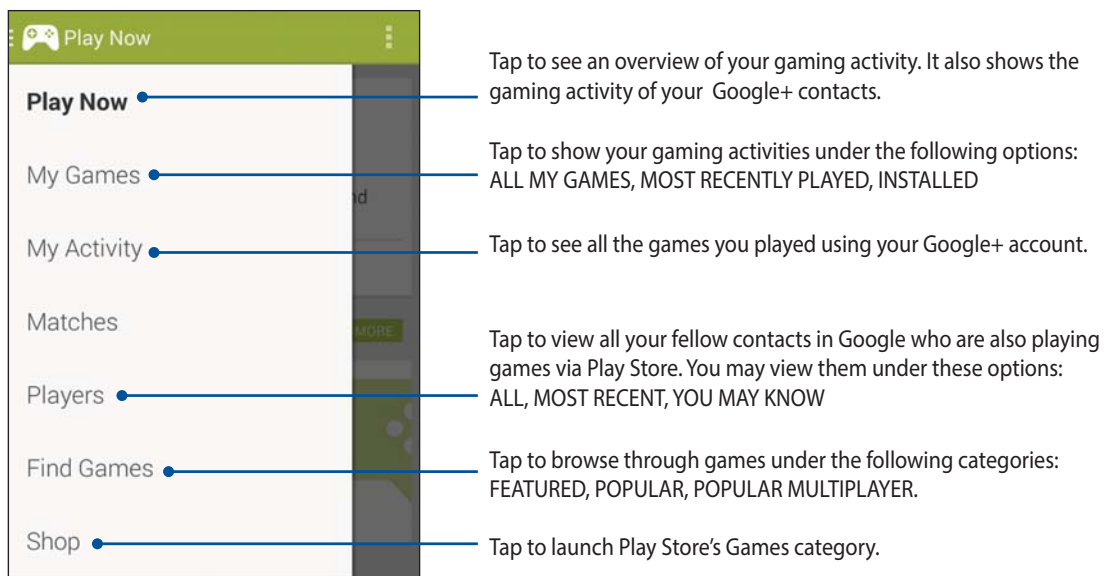
**IMPORTANT!** Log in to your Google account to maximize the features of Play Games.

---

## Using Play Games

To use Play Games:

1. From the Home screen, tap **Google > Play Games**.
2. Tap the option you would like to use.






## Music

Access your music collection right on your PadFone using the Music app. Music allows you to play music files stored internally or from an external storage device.

### Launching Music

To launch Music, tap  > **Music**.

### Playing songs

By default, Music plays all the songs saved in your PadFone's internal storage system. Start playing songs by tapping on them.

### Playing songs from your microSD card


To play songs saved from your microSD card:

1. Ensure that your microSD card is already inserted in your PadFone.

---

**NOTE:** For details on how to install the microSD card, refer to the *Installing a memory card* section in this e-Manual.

---

2. From the Music home screen, tap .
3. Under **My Device**, tap **Music** to browse through the music files saved in your microSD card.

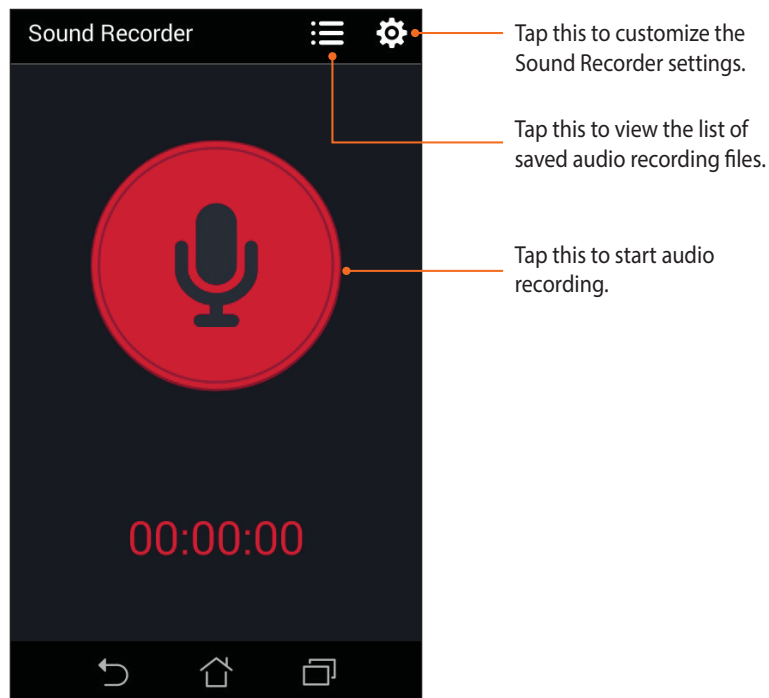
## Sound recorder

Record audio files using your PadFone by enabling the Sound Recorder app.

### Launching Sound Recorder

To launch Sound Recorder, tap  > **Sound Recorder**.

### Sound Recorder home screen




**11**  
*Maintain your PadFone*

## Storage

You can store data, apps, or files on your PadFone (internal storage), on an external storage, or on an online storage. You need an internet connection to transfer or download your files on an online storage. Use the bundled USB cable to copy files to or from the computer to your PadFone.

## Backup and reset


Back up data, Wi-Fi passwords, and other settings to Google servers using your PadFone. To do this:

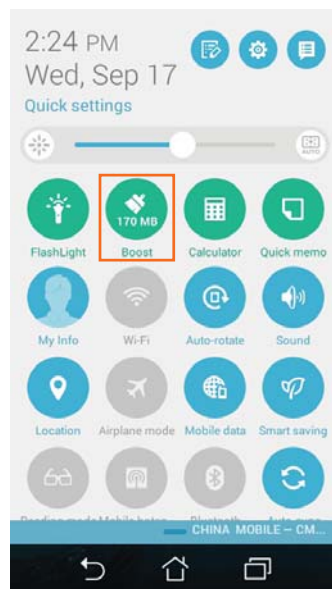
1. Tap  then tap **Settings > Backup & reset**.
2. From the Backup & reset window, you can:
  - **Backup my data:** This feature backs up your data, Wif-Fi passwords, and other settings to Google servers when enabled.
  - **Backup account:** Allows you to specify the account you to be associated when you save your backup.
  - **Automatic restore:** This features facilitates restoration of backed up settings and data when you renintall an app.
  - **Factory data reset:** Erases all data on phone.
  - **Factory reset password:** Sets the password for factory reset.

## Memory

Boost function is to optimize device performance after a device is being used for a period of time. This function will close unused processes that are running in the background in order to retrieve more system memory.

To use Boost:

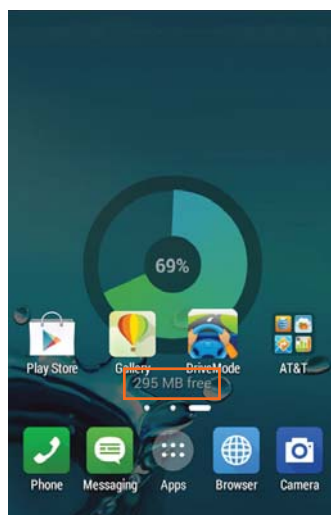
1. Swipe from the top of your screen and tap .
2. Tap **Boost**.



3. Wait a while for **Boost** to close unused background apps and release system memory.



4. When complete, the system memory size released will show on your screen.




## Securing your PadFone

Use the security features of your PadFone to prevent unauthorized calls or access of information.

### Unlocking your screen

When the screen is locked, you can open it with the security unlocking options that the PadFone offers you.

To select the screen unlock of your PadFone:

1. Tap  then tap **Settings** > **Lock screen**.
2. Tap **Screen lock** then select an option to unlock your PadFone.

---

#### NOTES:

- Refer to section **Unlock screen options** for more information.
  - To deactivate the unlock screen option that you set, tap **None** on **Choose screen lock** screen.
-

## Unlock screen options

Choose from these options to lock your PadFone.

- **Slide:** Slide your finger to any direction to unlock your PadFone.





- **Face Unlock:** Show your face on the black window of the lock screen to unlock your PadFone.
- 

**IMPORTANT!**

- Face Unlock is less secure than a pattern, PIN, or password.
  - Someone who looks similar to you could unlock your PadFone.
  - The data used to identify your face is kept in your PadFone.
- 

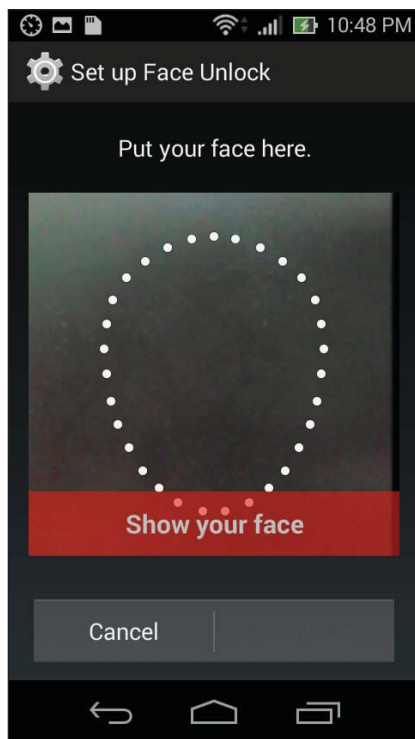
To set up Face Unlock:

1. From the Choose screen lock screen, tap **Face Unlock**.
2. Read the terms in using Face Unlock feature on your screen, then tap **Set it up**.
3. Read the instructions in setting up Face Unlock on your screen, then tap **Continue**.
4. Hold your PadFone at eye level and align your face on the outline of your screen to capture it.

---

**NOTE:** The green-dotted outline indicates that the PadFone has detected your face and in the process of capturing the image.

---



5. After your face has been captured, tap **Continue**.
6. If Face Unlock cannot recognize your face, you will be prompted to select a secondary option to unlock your PadFone. Select Pattern if you want to unlock your PadFone by a pattern, or PIN to unlock it by keying in your PIN then follow the succeeding onscreen instructions.

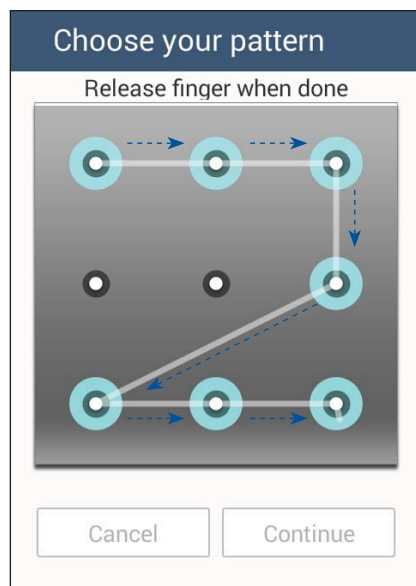
---

**IMPORTANT!** Ensure to remember the PIN or pattern that you created to unlock your device.

---

7. After you finished Face Unlock setup, tap **OK**.

- **Pattern:** Slide your finger on the dots and create a pattern.

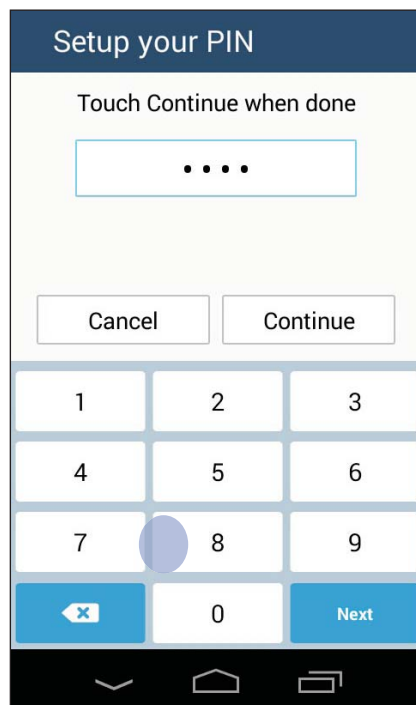


---

**IMPORTANT!** You can create a pattern with a minimum of four dots. Ensure to remember the pattern that you created to unlock your device.

---

- **PIN:** Key in at least four numbers to set a PIN.

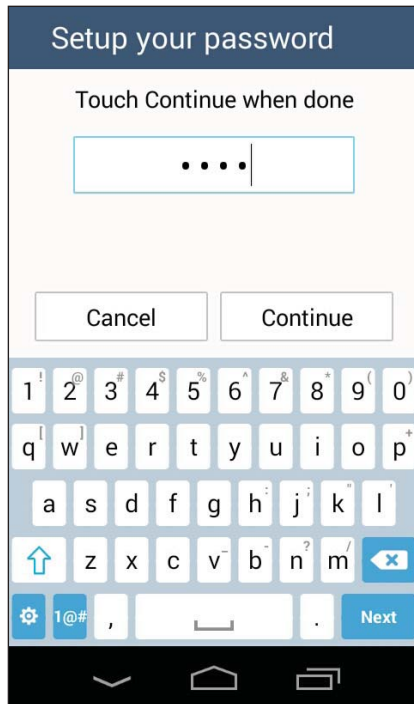


---

**IMPORTANT!** Ensure to remember the PIN that you created to unlock your device.

---

- **Password:** Key in at least four characters to create a password.



---

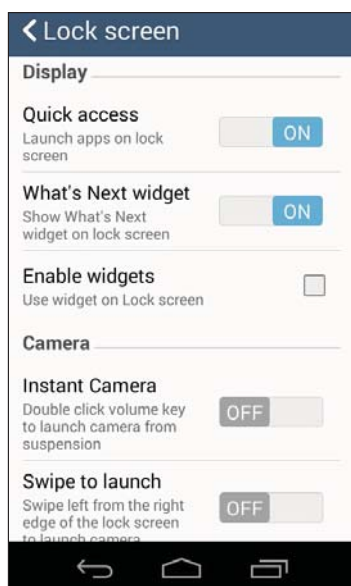
**IMPORTANT!** Ensure to remember the password that you created to unlock your device.

---

## Configuring the other screen security features

Aside from the mode of screen lock, you can also do the following on the Screen security window:

- **Quick Access:** Slide the Quick Access switch to ON to launch apps on the lock screen.
- **What's Next widget:** Slide the What's Next Widget switch to ON to show the said widget on the lock screen.
- **Enable widgets:** Check the box beside Enable widgets to use widgets on the lock screen.
- **Instant camera:** Slide the Instant camera switch to ON to launch the PixelMaster Camera app even if your PadFone is in idle mode by pressing the volume button twice.
- **Swipe to launch:** Slide the Swipe to launch switch to ON to launch the PixelMaster Camera app by swiping left from the right edge of the lock screen.
- **Owner info:** Tap this to edit and key in the information that you want to appear even when your screen is locked.




## Setting your PadFone identity

Know your PadFone's identity such as serial number, IMEI (International Mobile Equipment Identity) number, or model number.

This is important, as when you may lose your PadFone, you can contact your mobile carrier and provide the information to blacklist the unauthorized use of your PadFone.

To display your PadFone's identity:

1. Tap  then tap **Settings**.
2. On the Settings screen, slide down to display other items then tap **About**. The About screen displays the status, legal information, model number, operating system version, hardware, and software information of your PadFone.
3. To see the serial number, SIM contact number, and IMEI of your PadFone, tap **Status**.

[illegible]



# 12


*Connect your PadFone*

## Wi-Fi

The Wi-Fi technology of your PadFone gets you connected to the wireless world. Update your social media accounts, browse the Internet, or exchange data and messages wirelessly with your PadFone.

### Enabling Wi-Fi

To enable Wi-Fi:

1. Tap  on the Home screen then tap **Settings** app.
2. Slide the Wi-Fi switch to the right to turn on the Wi-Fi.

---

**NOTE:** You can also enable the Wi-Fi from Quick Settings screen. Refer to section **Quick Settings** on how to launch Quick Settings screen.

---

### Connecting to a Wi-Fi network

To connect to a Wi-Fi network:

1. On the Settings screen, tap **Wi-Fi** to display all detected Wi-Fi networks.
2. Tap a network name to connect to it. For a secured network, you may be prompted to key in a password or other security credentials.


---

**NOTES:**

- Your PadFone automatically reconnects to the network that you connected with previously.
  - Turn off Wi-Fi feature to help save battery power.
-

## Disabling Wi-Fi

To disable Wi-Fi:

1. Tap  on the Home screen then tap **Settings** app.
2. Slide the Wi-Fi switch to the left to turn off the Wi-Fi.

---

**NOTE:** You can also disable the Wi-Fi from Quick Settings screen. Refer to section **Quick Settings** on how to launch Quick Settings screen.


---

## Bluetooth®

Use the Bluetooth feature of your PadFone to send or receive files and stream multimedia files with other smart devices over short distances. With Bluetooth, you can share your media files with your friends' smart devices, send data for print with a Bluetooth printer, or play music files with a Bluetooth speaker.

## Enabling Bluetooth®

To enable Bluetooth:

1. Tap  on the Home screen then tap **Settings** app.
2. Slide the Bluetooth switch to the right to turn on the Bluetooth.

---

**NOTE:** You can also enable the Bluetooth from Quick Settings screen. Refer to section **Quick Settings** on how to launch Quick Settings screen.

---

## Pairing your PadFone to a Bluetooth® device

Before using the Bluetooth feature of your PadFone in full scale, you have to pair it first with the Bluetooth device. The PadFone automatically stores the pairing connection of the Bluetooth device.

To pair your PadFone to a Bluetooth device:

1. On the Settings screen, tap **Bluetooth** to display all available devices.

---

### IMPORTANT!

- If the device that you want to pair is not in the list, ensure to enable its Bluetooth feature and is discoverable.
  - See the user guide that came with your device to learn how to enable its Bluetooth and set it to discoverable.
- 

2. Tap **Search for devices** to scan for more Bluetooth devices.
3. In the list of available devices, tap the Bluetooth device that you want to pair with. Follow the succeeding instructions to complete the pairing.


---

**NOTE:** Turn off Bluetooth feature to help save battery power.

---

## Unpairing your PadFone from the Bluetooth® device

To unpair your PadFone to a Bluetooth device:

1. On the Settings screen, tap **Bluetooth** to display all available and paired devices.
2. In the list of paired devices, tap  of Bluetooth device that you want to unpair, then tap **Unpair**.


13

*App essentials*

## Managing apps

### Adding app shortcuts to home

You can create shortcuts for your favorite apps on the home screen.

1. Tap  to go to the All apps screen.
2. Tap and hold the icon of the app you wish to move then drag and place the app on the home screen.

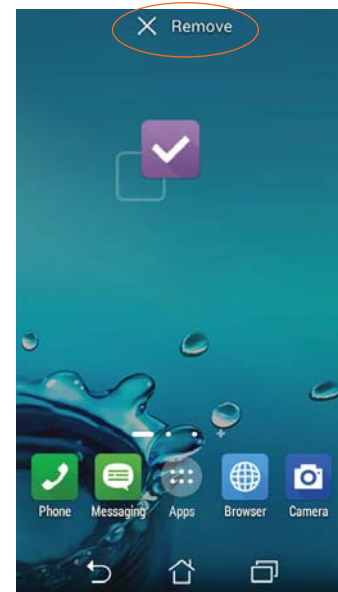
### App info

You can view the detailed app information while you are creating a shortcut for the app. While holding an app from the All apps screen to the home screen, the **App info** will appear on the top of the home screen page. Drag the app to **App info** to display its detailed information.

### Removing app shortcuts from home

You can remove app shortcuts from the home screen. The original app will remain in your **All apps** screen. To remove an app in your Home Screen:

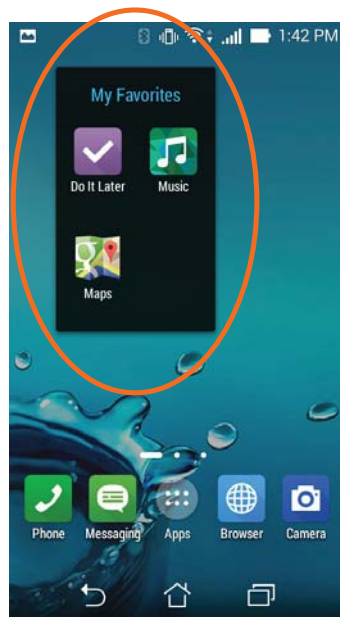
1. Tap and hold an app on the home screen until **X Remove** appears.
2. Drag the app to **X Remove** to remove it from the Home Screen.



## Organizing your apps

Create folders to organize your applications and shortcuts on the home screen.

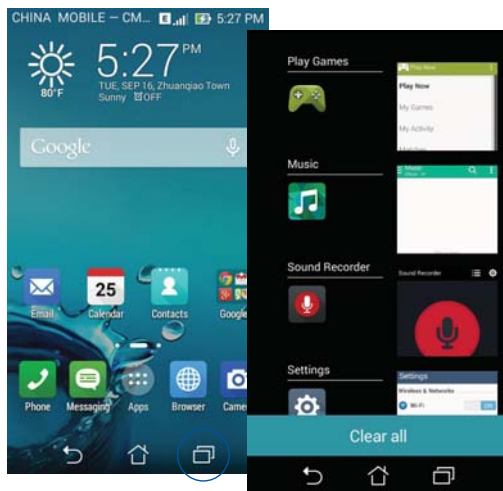
1. On the home screen, tap and drag an app or shortcut onto another app and a folder will appear.
2. Tap the new folder and tap **Unnamed Folder** to rename the folder.



## Viewing recent apps

Recent apps are displayed on the left panel of the home screen. You can find detailed information and manage your apps from the Recent Apps list.

1. Tap the **Recent Apps** icon at the bottom of the home screen.



2. Swipe up or down to view **Recent Apps**. Swipe a recent app to the left or right to remove from the list.
3. Tap and hold a recent app to display the menu. Select to remove app from list or display app information.
4. Tap **Clear all** to remove all apps.

## Launching apps


Tap **App Drawer** to display all your apps. The main apps screen is where you can see all your apps. From the main apps screen you can:

- Tap an icon to launch an app.
- Drag an app icon into the Home Screen.
- Get more apps from Play Store.
- Swipe the screen to display more apps.
- Explore widgets.



## Switching apps

When you've launched several apps on your PadFone, you can easily switch between your recently-launched apps.


Tap  to view your recently-launched apps.

- Tap an app to view it.
- To remove an app, simply swipe it to the left or right.
- To remove all apps, tap **Clear all**.


## Locking apps

Secure your apps from unauthorized use with a 4-12 digit password.

To lock your apps:

1. From **All Apps**, tap  > **Lock apps**.
2. Enter a password containing 4-12 digits.
3. Select the apps you want to lock then tap **OK**.

To change the password of your locked apps:

1. From **All Apps**, tap  > **Lock apps settings**. Enter your password when prompted.
2. Tap **Change password**, and enter your old and new password.

## Downloading apps

Download tons of apps and games from Play Store directly to your PadFone. Some of the apps and games are free, others you may need to purchase using a credit card or other payment form.

To download apps:

1. Tap **Play Store** from your Home screen.
2. Follow the onscreen instructions to sign in to your existing Gmail account. If you don't have a Gmail account, please create one.
3. After successfully signing in, you can start downloading an app from Play Store.

14

*There's more to your PadFone*

## Power saver

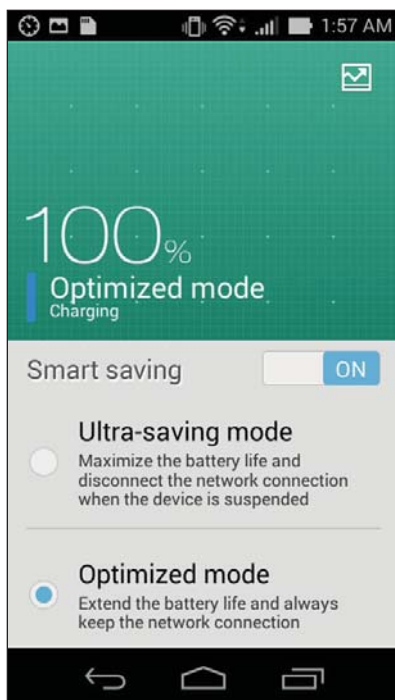
Fully maximize or extend the power of your PadFone even when it is idle or while it stays connected to your network. Smartly customize the power settings for your frequent activities such as reading emails or watching videos.

### Setting up Power Saver

Maximize, optimize, or customize the power of your PadFone with some smart power saving options.

To set up Power Saver:

1. From **All Apps**, tap **Power Saver**.
2. Slide Smart saving to **ON**.




3. Select any of these modes:

- **Ultra-saving mode:** Disconnects the network connection when your PadFone is idle to fully maximize its battery life.
- **Optimized mode:** Extends the battery life while your PadFone stays connected to your network.
- **Customized mode:** Allows you to set up the power settings for your frequent activities, and

## Customizing Power Saver

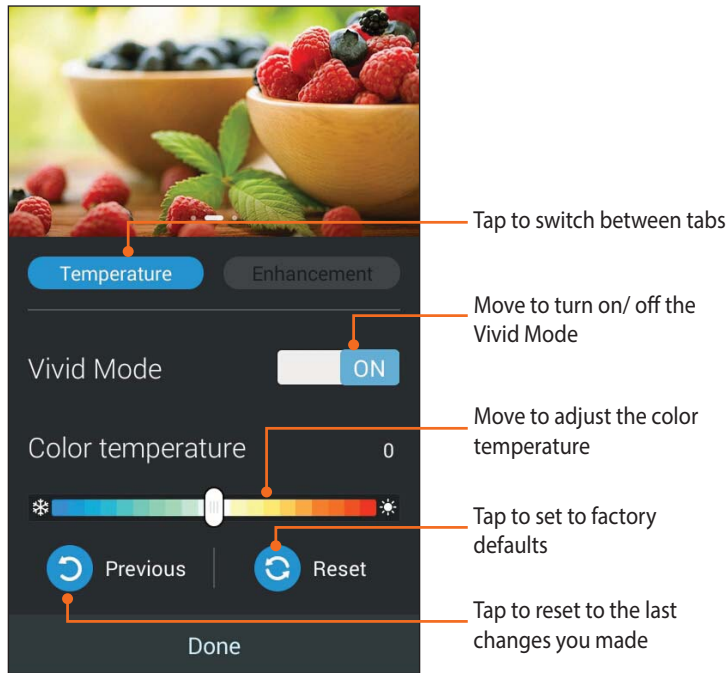
Set the brightness level for your frequent activities such as reading emails or books, watching videos, browsing websites, and listening to music. You can also enable the power saving function for some apps or enable the auto-disconnection of your network when your PadFone is asleep.

To customize Power Saver:

1. From **Power Saver**, tick **Customized mode**, then tap .
2. Tick an activity, then set the brightness level in percentage.
3. If you want to enable the auto-disconnection of your network, tick **IM and other apps using push notification**. Your PadFone will automatically disconnect from your network when it is idle, and will resume the network connection when you wake up your PadFone.

## Splendid

Splendid allows you to easily adjust the display settings.



To use Splendid:

1. Tap **⋮** > **Splendid**.
2. Adjust the screen color temperature and contrast through the **Temperature** and **Enhancement** tabs.
3. Tap **Done** to apply the changes.

## TalkBack

TalkBack provides spoken feedback to help you navigate your device, describing what you touch and activate.

### To turn TalkBack off or on:



1. Go to **Settings > Accessibility > TalkBack**.
2. Slide the TalkBack switch to **ON** or **OFF**.
3. Tap **OK** to turn on TalkBack.
4. When asked if you want to enable **Explore by Touch**, touch **OK** only if you want to change the way your device describe each item that your item finger moves over on the screen.

When you turn on TalkBack, spoken feedback starts immediately. As you navigate your device, TalkBack describes your actions and alerts you of notifications and other occurrences.

If you also enable Explore by Touch, accessibility gestures are turned on, and moving your finger around the screen triggers a description of each item it touches. Double-tap to activate the last spoken item, and swipe with two fingers to perform swiping actions that normally require just one finger.

## AT&T DriveMode®

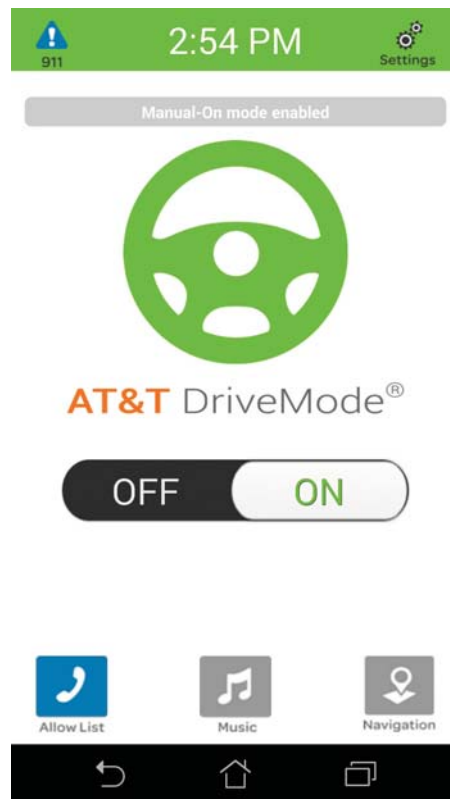
When your vehicle is in motion, automatically respond to incoming texts and emails. Texting while driving...it can wait.

Tap  in the Apps tray to open the app. You can change AT&T DriveMode settings by tapping .

---

**NOTE:** AT&T DriveMode is free to AT&T customers. Standard data and messaging rates apply to auto-reply messages.

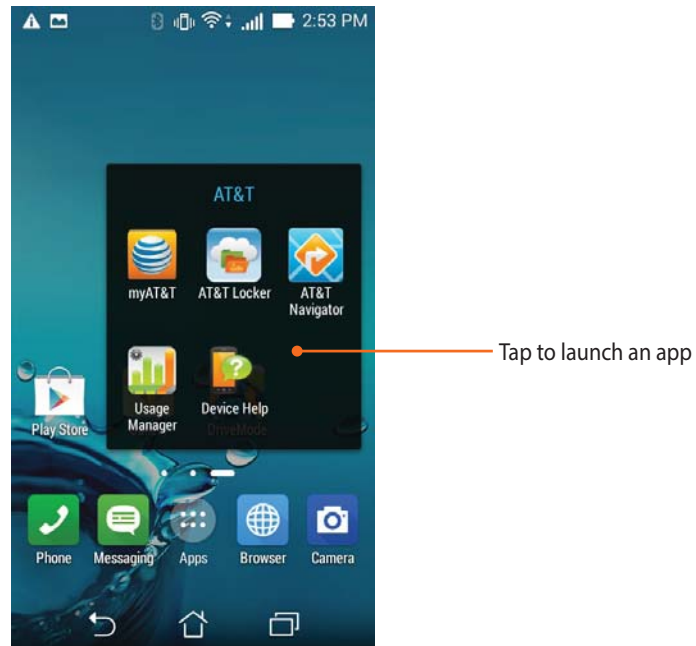
---





## AT&T Services

AT&T offers multitude of apps designed to make your everyday life easier.



**myAT&T:** Access billing, usage, and feature information and manage your account from the palm of your hand.



**AT&T Locker™:** Store, sync, and share your photos, videos, and documents in one safe, convenient place.



**AT&T Navigator:** Get traffic updates, GPS navigation, and turn by turn voice directions.



**Usage Manager:** Monitor your phone data usage and quickly change your phone settings to make the most of your phone data plan.



**Device Help:** View the online help on how to use your device from AT&T.

