

Canvas selfie

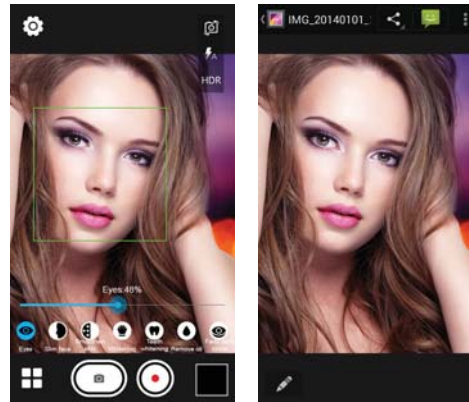
## Introduction

Time to get into your quintessential mode with the selfie in hand. The selfie's repertoire of beautification modes is surely set to redefine the way you capture your snapshots.

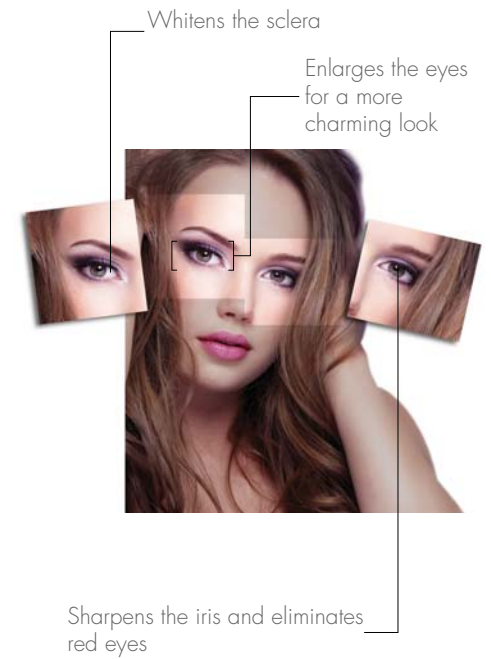


## Eye Enlargement

Make your eyes more captivating and appealing by tapping the eye enhancement mode anytime.

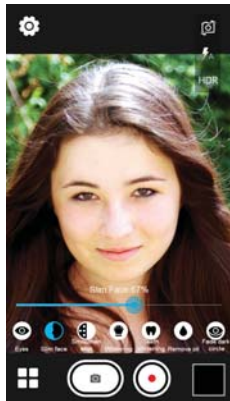


## Eye Enlargement



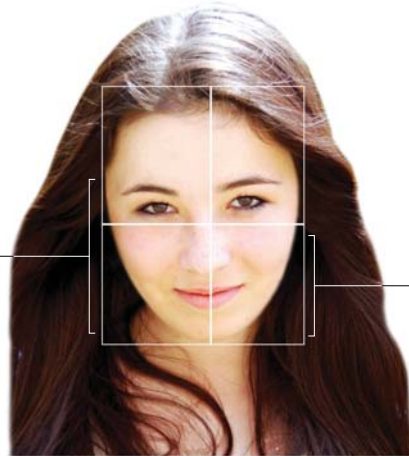
## Face Slimming

Redraw the shape of your face and make your younger aspect come alive.



## Face Slimming

Maintains the natural shape



Slims your face for a more youthful appearance

## Skin Smoothing

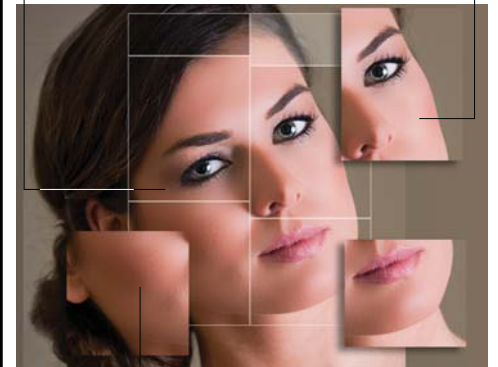
Time to present your skin at its smoothest avatar with just a few taps of the Selfie's versatile camera.



## Skin Smoothing

Hides wrinkles, blemishes and skin imperfections

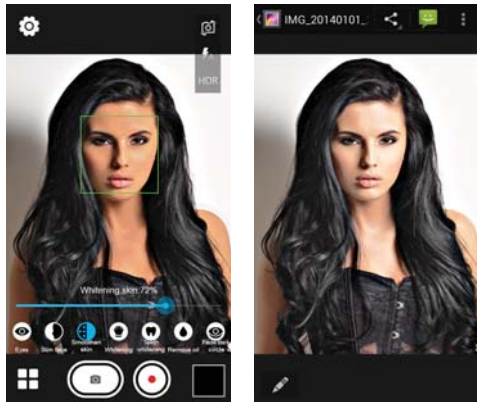
Retains the natural skin tone



Smoothens out the skin for that impeccable tone

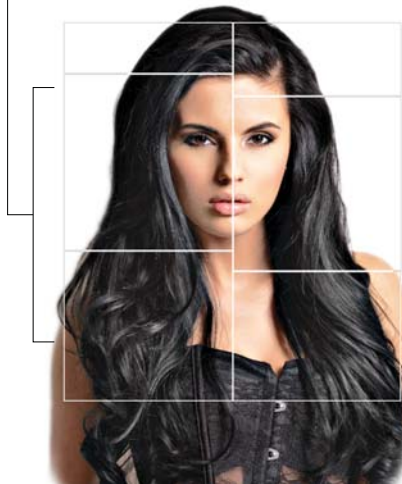
## Skin Whitening

You can now defy your genes and the sunburns. Take amazingly fair snapshots of yourself in a jiffy.



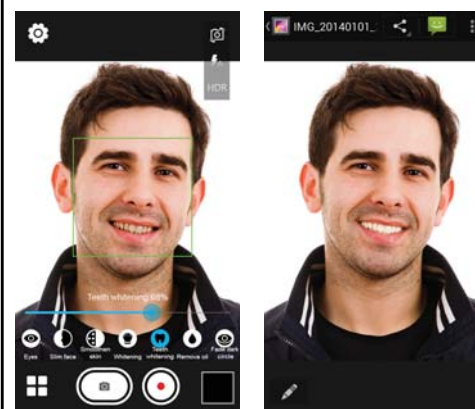
## Skin Whitening

Whitens the skin to your desired degree



## Teeth Whitening

Get ready for the perfect smile. Get flawlessly white teeth with just a few touches.



## Teeth Whitening

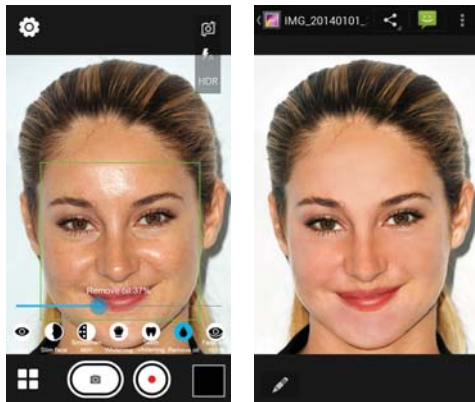
Isolates the teeth and applies advanced algorithm for that perfect outcome.



Retains the natural glow of the teeth.

## Remove Reflections

Do away with flash reflections in your snapshots. Infuse natural light and improve the ambience of your shots.



## Remove Reflections

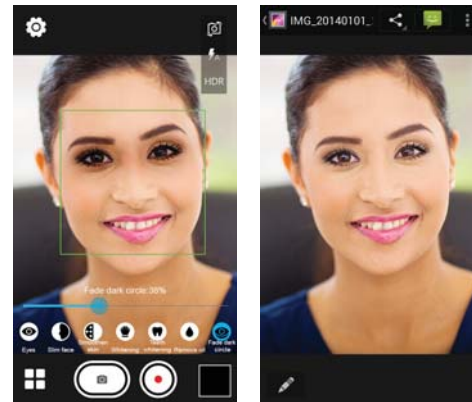
Applied in combination with red eye reduction and face toning.



Makes the surrounding light look natural

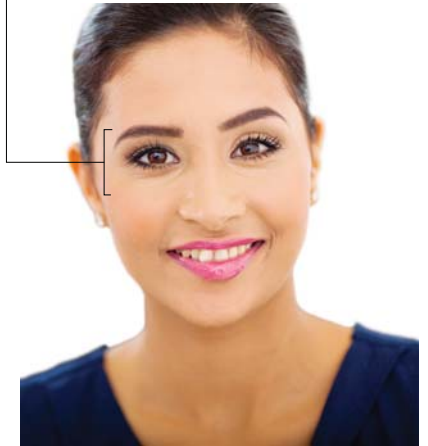
## Fade Dark Circles

Dark circles make you look older than you really are. Let us make those circles fade away instantly.



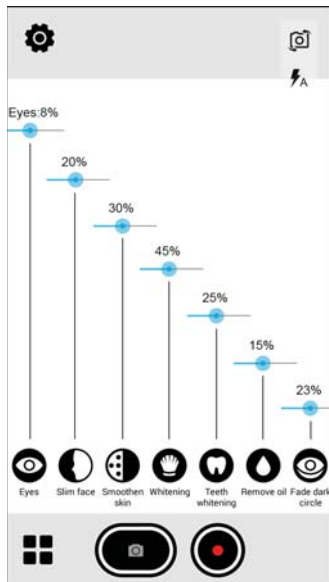
## Fade Dark Circles

Makes you look healthier and much younger



## Auto Merge

No need to manually merge your touch up modes into one. The Selfie does just that in real time.



## Auto Merge

Just choose your desired enhancement values across the modes and just point and shoot.



You will get a merged photo no matter whichever mode you are currently in.



## Auto Merge

The Selfie retains your camera settings across your photo sessions. You can make minor adjustments in your next session if required.

