

# VIVO 4.8 HD

User Manual

# Table of Contents

|                                  |    |
|----------------------------------|----|
| Safety Information .....         | 3  |
| Appearance and Key Function..... | 4  |
| Introduction .....               | 5  |
| Call Functions .....             | 6  |
| Contacts .....                   | 7  |
| Messaging.....                   | 8  |
| Internet Browser.....            | 9  |
| Bluetooth & Wi-Fi .....          | 10 |
| Camera .....                     | 12 |
| Gallery.....                     | 13 |
| Music.....                       | 14 |
| Sound Recorder .....             | 15 |
| Alarm Clock.....                 | 16 |
| FM Radio.....                    | 16 |
| Google Play.....                 | 17 |
| Settings .....                   | 18 |
| Storage.....                     | 21 |

# Safety Information

Please carefully read the terms below:

## **Use Safely**

Do not use your mobile phone where it might cause danger.

## **Transportation Safety**

Please observe all transportation laws and regulations.

Please drive with both hands on the wheel.

**DO NOT TEXT AND DRIVE**

## **Hospitals**

Please follow hospital rules and limitations.

Please keep your mobile phone away from medical instruments.

## **Airports**

Please follow all flight safety regulations and do not use your phone during flight.

## **Toxic Chemicals**

Do not use your mobile phone around fuels or chemicals.

## **Explosion Hazard**

Please observe related limitations and do not use your mobile phone around an area where explosions may occur.

## **Accessories and Batteries**

Please use only Blu authorized accessories and batteries.

## **Backup**

Please remember to keep a written record of all important information.

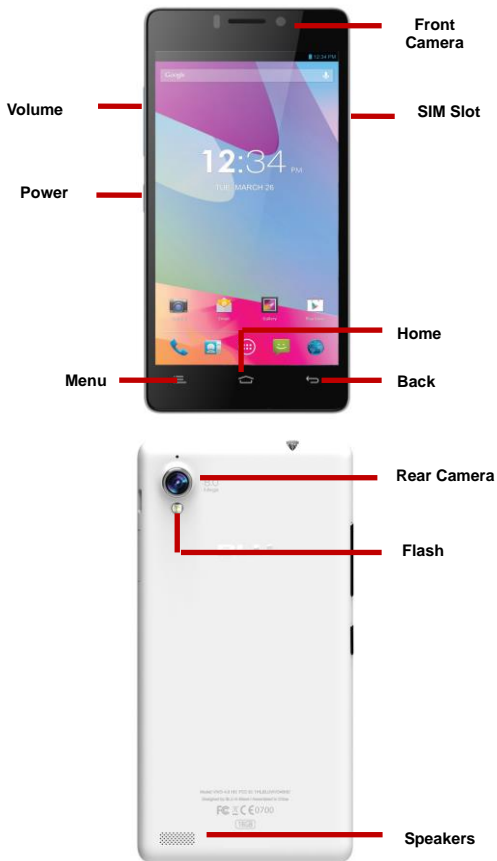
## **Water Damage**

Your phone is not waterproof. Keep it away from water and liquids.

## **SOS Emergency Calls**

Make sure your mobile phone is switched on and in a service area. In home screen, tap the phone key and dial 911 and send.

# Appearance and Key Function



# Introduction

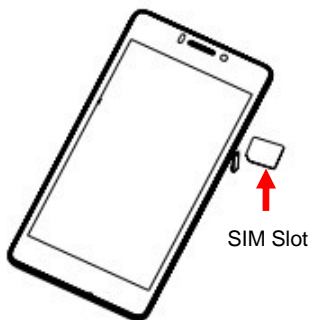
## Installation of the SIM Card

Please install the SIM card before using your phone.

**Note:** Keep the SIM card out of the reach of children. The SIM card and its contact are easily damaged due to scratching or bending. Please be cautious when carrying, installing or taking out the SIM card. **SIM Card:** *The phone uses a Micro SIM card. Please make sure to obtain one from your mobile phone service provider.*

### **To insert SIM card:**

1. Switch off the mobile phone.
2. Insert SIM card in slot and power on.



## Power On and Off

**On** - Please ensure the SIM card has been properly inserted into the phone. Long press the Power key to switch the phone on.

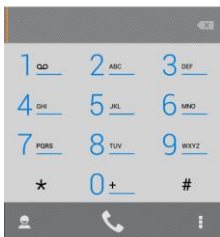
**Off** - In standby mode, long press on Power key until an options menu appears. Select POWER OFF in the menu and confirm in the pop-up prompt to switch off the phone.

## Password Lock

You may set a screen unlock as a security measure. For further information regarding password locks, password revision and other functions please enter the security settings of the phone.

# Call Functions

At the dial keyboard, enter the phone number and then click the dial key. If dialing an extension, you may click the dial pad icon in the bottom of the screen to open the interface and enter the number of the extension. You may also call contacts through speed dial.



## Call Logs

---

Every telephone number called and received will be saved in the phones call log. All numbers in the call log can be dialed directly by clicking the dial icon on the right side of the screen. When the number appears on the list, click it to view details.

## Proximity Sensor

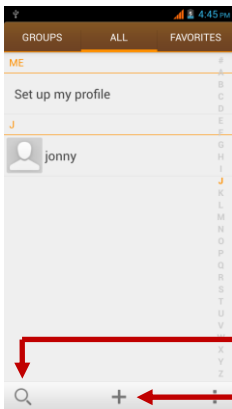
---

The proximity sensor determines how far away an object is from the device. During the call or when you place the phone close to the ear, the backlight will turn off automatically which conserves battery and prevents inadvertently touching.

# Contacts

**Enter:** Click on the applications menu and select contacts

- The default display is the phone contacts and SIM card contacts
- The contacts are organized alphabetically by default.



Search

Add Contact

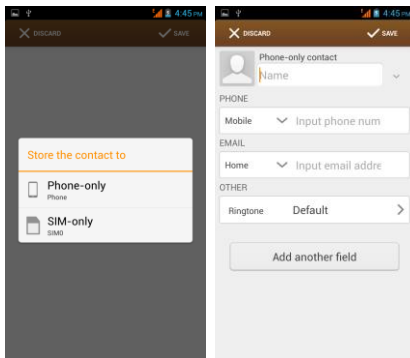
Click the Search icon to enter the contact search interface.

- Any numbers or letters associated with any of the contacts saved in the list will be shown in the search results.
- If there were no matches for the inputted contact, the interface will display no contacts found.

## Add New Contact

---

1. Click on the Contacts icon
2. Click (+) to save contacts to phone or SIM card
3. You may edit contact picture, name, telephone number, group, address, and email among other options
4. Click to finish and save contact.



# Messaging

You may use this function to exchange text messages and multimedia messages with your family and friends. The messages to and from the same contact or phone number will be saved into a single conversation so you may see the entire message history conveniently.

## **Send an SMS**

---

Click on the Messaging icon » New message

1. Click to enter recipient (You may enter contacts from contact book or enter a new number)
2. Compose Message
3. Send

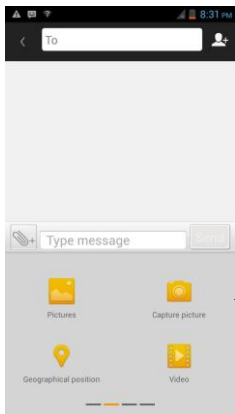
## **Send an MMS**

---

When creating message, the default message style is SMS. The message will automatically convert to MMS when adding an attachment.

1. Click the Paperclip icon in the messaging interface.
2. Click “Attach” to add the following attachments.





Select  
Attachment  
Type for MMS  
Message

# Internet Browser

## Menu Functions

---

### Backward

- After browsing through multiple pages, this option will return the user to the previous page.

### Forward

- After browsing through multiple pages, this option will move to a web page after the current page.

### Windows

- You may view all windows open by clicking the windows icon in the upper right part of the browser.

### Bookmarks

- Click the save to Bookmarks option to make the current URL as a saved Bookmark.

### More

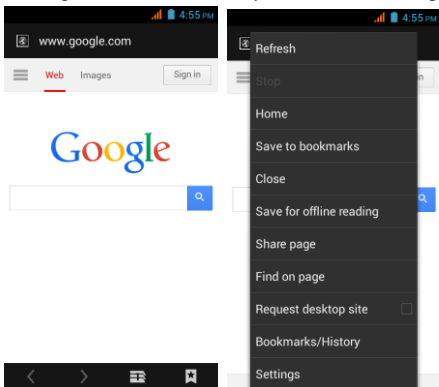
Find on page: Search current page.

Share page: Select to share the current page.

Save for offline reading: Saves page for offline reading.

Bookmarks/History: Show your browsing history and view the most visited pages.

Settings: Contains a variety of browser settings.



## Bluetooth & Wi-Fi

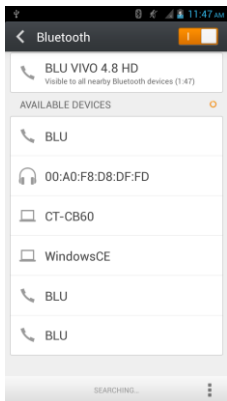
Bluetooth is a short-range wireless communications technology that devices can use to exchange information and connect to different types of devices which include headsets, car kits, and other devices.

### **Power on Bluetooth**

---

- 1) Settings » Bluetooth and select to power on Bluetooth.
- 2) The Bluetooth icon will appear in the notification bar. Click “scan for devices” and the phone will start to scan for all devices within range.
- 3) In Bluetooth settings all the devices found will displayed in the list under the icon.

**Note:** The maximum detecting time of the phone is 2 minutes.

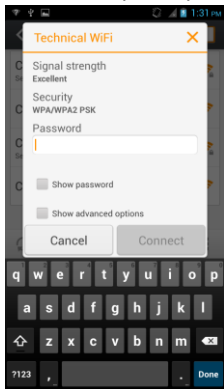


← List of available devices

## Power on Wi-Fi

- 1) Settings » Wi-Fi and select ON to power on Wi-Fi
- 2) Click on the desired Wi-Fi network to be connected.

**Note:** Unsecured networks can be connected to directly - secured networks require a password or credentials prior to connection



← List of available networks and the network connection screen

# Camera

## Open Camera

---

1. Click on the Camera icon
2. Switch to video mode if you want to record videos.

**Note:** You may also place a camera shortcut on any of the screens

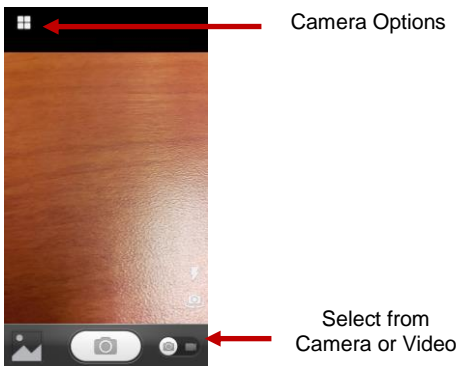
## Take Pictures

---

1. Aim the object that the picture will be taken.
2. Press the “Shutter” button on the screen.
3. After taking the picture, the file will be saved in the camera's gallery folder.
4. You can view the photos by clicking the preview box button.

You may adjust various settings for the camera by pressing Menu while in the camera interface.

When in the camera viewfinder mode, you can switch to video or photos' gallery. On the camera viewfinder mode, you will find the display the preview of the previous picture taken. Click the “preview box” and the photo will display in full screen.

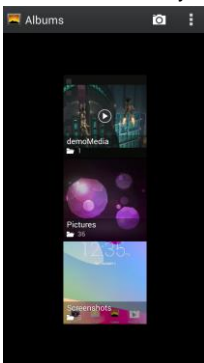


# Gallery

## **Open Images**

---

Click on the Gallery Icon



Pictures and videos are stored in separate albums

## **Share Pictures**

---

You may share pictures by sending them through Gmail or the E-mail application. You may also send pictures through the MMS message function by composing a message and attaching the picture. Any image can also be sent via the Bluetooth function by selecting Bluetooth equipment that has been paired.

## **Adjust Image**

---

Press Menu and Edit to adjust images. The settings include, but are not limited to:

Edit light: Fill Light, Highlights, Shadows, Auto-Fix.

Edit image effects: Cross-process, Posturize, Logo, Documentary, and Fish Eye.

Color Effects: Warmth, Saturation, B&W, Sepia, Negative, Tint, Duo-tone, Doodle.

Crop: Crop, Red Eye, Straighten, Rotate, Flip, Sharpen.

## View Images

---

In the picture interface, click on an album to view images

You can choose to display small or large thumbnails. In the photo album, scroll the picture towards left to view the next picture or towards right to view the previous one.

## Crop Pictures

---

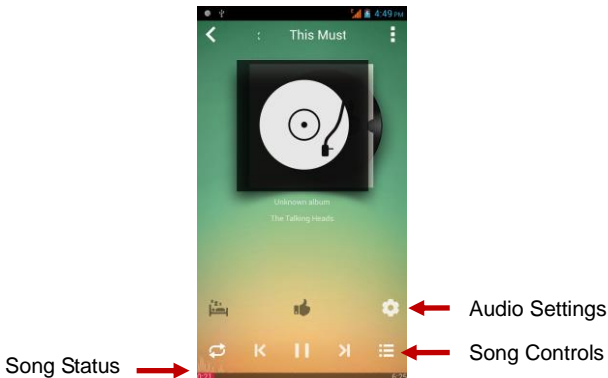
If you want to adjust the size of the picture, use the crop tools. Once the arrow appears, pinch your fingers in or out to adjust the size. If you want to adjust the image and keep its proportion, please hold down any of the four corners of the image and adjust.

# Music

## Open Music

---

Click on the Music icon



## Search Music

---

You may choose to search for music from media folder through artist name, song, and album. **The following formats are available:** AMR, MIDI, MP3, WAV, and OGG.

# Sound Recorder

The Sound Recorder can record voice or any audio.

You may send any recorded audio via Bluetooth or MMS and also have the option to make any recorded audio the phones default ring tone.

**Notice:** The recorder only uses AMR, 3GPP, and OGG format.

## Record

---

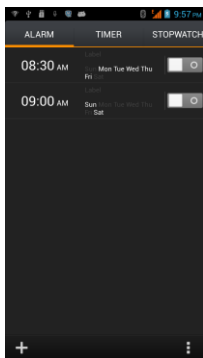
- Keep the phone's microphone near the voice source.
- Click the record button to record the audio.
- Click the stop button to stop recording the audio.

All recordings will be saved in my recording folder in the default music program.



# Alarm Clock

1. Click on the Clock icon in the application menu
2. Click set alarm button and enter the alarm clock set interface where you may add and edit alarms



Click to add, edit  
or delete alarms

# FM Radio

## FM Radio

---

Through this function, you may listen to FM radio on the device. The FM radio uses the wired headphones as an antenna in order to receive signal. Before using this function, connect the original equipment headphones that came with the phone.

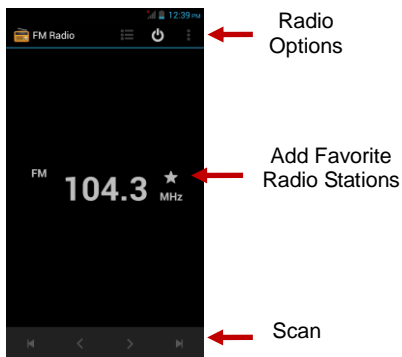
## Open FM Radio

---

Press the FM Radio icon to open the application.

1. Click "Search" automatic scans of FM channels.
2. Click to add favorite radio stations.



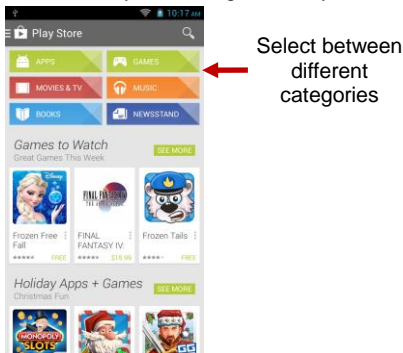


## **FM Radio as Background**

Click on the Home key to move the Radio to the background.

# Google Play

Google Play allows you to download music, movies, and even games. Click the Play icon to sign in with your Google account.



# Settings

## Airplane Mode

- Turn on Airplane Mode.

**Note:** When in flight mode, all network connections will turn off automatically.

## Mobile Networks

- Select Mobile Data Connection and APN settings.

## Wi-Fi / WLAN

- **Settings » Wi-Fi » Click Wi-Fi** to power on. When on, the Wi-Fi will automatically search for available networks. Any unsecured network can be used directly and any secured network requires a password or credentials prior to connection.

## Bluetooth

- Press the switch to power on Bluetooth. Once on, the Bluetooth will automatically scan for any nearby open equipment.

## More Wireless

- Data Usage
- Tethering, Portable hotspot, and VPN

## Sound and Vibrate

This option sets the phone tone settings for receiving calls or notifications. Some of the settings include

- Vibrate, volume, ring tones, ring tones notification and haptic feedback tones

## Display

Brightness, Auto rotating screen, Wallpaper, Screen Timeout

## Security

Set up screen locks: Use a pattern, PIN, Face, Voice, or Slide to lock

the screen.

- Pattern: The first time there will be simple unlock instructions and examples.
- PIN: Enter PIN number to unlock the screen.

*You may stop the security feature at any time.*

### **Set up SIM card PIN lock**

- SIM card PIN (Personal Identification Number) is used to prevent unauthorized use of SIM card.

To change a blocked PIN code, you will need to unlock the SIM lock then go to the Change Password screen. The phone will automatically prompt you enter the old PIN code and ask to enter a new PIN code twice. The phone will then prompt you that the change was successful. If you enter the PIN incorrectly three times, the SIM and PIN codes will be automatically locked. You will need the PUK code to unlock the phone which is available through your service provider. If you enter the PUK code incorrectly 10 times, the SIM card will be permanently locked. Please see your service provider for a new SIM card.

- Password visible – Make the password visible when it's typed.
- Use security credentials - Allow applications to visit security credentials or other credentials.



### **Location Access**

- Access to my location – App permission to location
- When using the GPS satellite positioning, set accuracy to street level (Cancel it to save battery).



### **Power Saving**

- Power Saving Settings



### **Battery**

- General power usage



### **Storage**

- View the phone memory usage.



## **Apps**

- Manage applications - Manage and delete installed applications.
- Running services - Press the 'Stop' button to stop any of the services listed and removes from the "running services" list.



## **Date & Time**

- Date and Time adjustment.
- Time Zone - Select Time Zone according to where your location.
- Select Date Format - There are 3 kinds of formats you can choose from: Month-Day-Year, Day-Month-Year and Year-Month-Day, and Year-Month-Day which is the default setting



## **Schedule Power On & Off**

- Schedule power on and off



## **Schedule airplane On/off**

- Schedule airplane mode on and off



## **Language and Input**

- Language – Change the language of the phone.
- Custom Dictionary - Add or delete words to the custom dictionary.
- Keyboard Settings – Haptic vibration, Haptic tones, Capitalizing, Speech Input, Inputting words, Predictive text function, Auto-Text, Input keyboard method



## **Reset to Factory Setting**

- Backup Data – Will back up all application data, WLAN passwords, and other settings to Google's servers
- Restore to Factory Settings - Clear all data stored on the phone.



## Accessibility

- Power button ends call
- Speak Passwords
- Web accessibility



## Developer Options

If the phone does not display Developer options press “Build number” seven (7) times in the about phone tab in settings.

- The developer options gives access to USB Debugging and other developer options

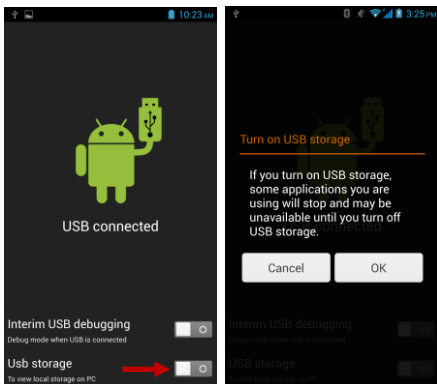


## About Phone

- You can check the information on status and updates

# Storage

Connect the phone with the USB cable provided. Once connected, a connection interface will appear. Once in the connection mode interface, select USB mass storage and turn on from the connection screen to be able to transfer files.



Some settings and user interface options may vary depending on SW version.