



A113

User Guide

WELCOME

Welcome to the Micromax family. Congratulations on becoming a proud owner of the Micromax A113 Android phone. Your A113 device offers you the following exciting features and much more:

- **Android Jelly Bean 4.1.2 Platform:** Your A113 comes packaged with Android 4.1.2 OS meaning that your mobile phone is based on a versatile operating system.
- **8 Megapixel Camera (with Auto-focus):** The 8 Megapixel camera allows you to take crisp and sharp high quality pictures and videos any time.
- **1.2 GHz, Quad core Processor:** To give you speed in handling your applications.
- **11.93 CM capacitive Touch screen:** Gives you an intuitive and friendly Interface allowing you to operate your phone with finesse.
- **Pinch Zoom Feature:** You can use the pinch zoom feature to magnify images and web pages displayed on your interface.
- **Intelligent User Interface:** The Intelligent and highly intuitive User interface makes your access to the features a smooth ride.
- **Dual SIM:** You can enjoy the features of two SIM on your handset.
- **Wi-Fi:** The Wi-Fi features lets you connect wirelessly and seamlessly with your Wi-Fi network for Internet connectivity.
- **Bluetooth 3.0:** Lets you exchange files and information with Bluetooth enabled devices.
- **Memory Card Support:** Expandable up to 32GB it helps you store your

multimedia files.

THE ANDROID ADVANTAGE

An Android™ phone can perform many of the same functions as a computer and you can customize according to your own needs. For example, you can add and remove applications or upgrade existing applications to improve the functions. At Android market, you can download a range of applications and games from an ever growing collection. You can also integrate applications on your android phone with other applications and with online services that you use.

READ ME FIRST

- Please read all safety precautions and this manual carefully before using your device to ensure safe and proper use.
- The descriptions in this manual are based on the default settings of your device.
- Available features and additional services may vary by device, software, or service provider.
- Applications and their functions may vary by country, region, software or hardware specifications. Micromax is not liable for performance issues caused by third-party applications.

DISCLAIMERS:

- Talk and Standby time are affected by Network preferences, type of SIM card, and individual usage patterns.
- Specifications are subject to change without prior notice. Services

and some features may be dependent on the network, or service content provider.

- Images shown in this User Guide are for representation only. Other product logos and company names mentioned/used herein may be trademarks or trade names of their respective owners.
- The functions explained or listed in this manual may differ from the actual functions appearing in the device. In such a case, the latter shall govern.
- Micromax reserves the right to make modifications to the content in this user guide without any prior notice.

INSTRUCTIONAL ICONS

Before you start, please familiarize yourself with the icons you will see in this manual:



Information: Provides useful information



Warning: Situations that could cause injury to yourself or others



Caution: Situations that could cause damage to your device or other equipment



Tips to help you with the features.

CONTENTS

WELCOME	2
THE ANDROID ADVANTAGE	3
READ ME FIRST	3
DISCLAIMERS:	3
INSTRUCTIONAL ICONS	4
CONTENTS	5
PHONE LAYOUT	8
INSERT SIM CARD	9
INSERT MEMORY CARD	9
TURN THE PHONE ON AND OFF	10
CHARGE THE BATTERY	11
UNLOCK THE PHONE	12
USING THE TOUCH SCREEN	13
TOUCH AND HOLD	13
DRAG AN ITEM	14
SCROLL	14
SWIPE	15
USING THE PINCH ZOOM	15
DOUBLE-TAP	16
CHANGE THE ORIENTATION	17
PLACING AND RECEIVING CALLS	18

MAKE A CALL	18
CONFERENCE CALL	18
MAKE AN INTERNATIONAL CALL	19
END A CALL	20
DISABLE PHONE CALLS	20
USING THE HANDSET'S KEYS	20
THE HOME SCREEN	21
SWITCH BETWEEN HOME SCREENS	21
CUSTOMIZE HOME SCREEN	21
MENU ICONS	23
WORKING WITH MENUS	23
CONTEXT MENU	23
OPTIONS MENUS	24
MANAGING NOTIFICATIONS	25
OPEN THE NOTIFICATIONS PANEL	25
MESSAGING	27
CREATE AND SEND MULTIMEDIA MESSAGE	28
FORWARD A MESSAGE	29
LOCK A MESSAGE	30
USING THE ONSCREEN KEYBOARD	30
USE VOICE COMMAND	31
MULTIMEDIA	32
CAMERA	32
GALLERY	33
MUSIC	33
COPY SONGS FROM YOUR PC	34
FM RADIO	34

RECORD SOUND	35
CONNECT TO NETWORKS AND DEVICES	35
CONNECT TO THE INTERNET	35
USING A113 AS A MODEM FOR INTERNET CONNECTIVITY	36
PAIR WITH BLUETOOTH DEVICES	37
MANAGE ACCOUNTS	38
GOOGLE ACCOUNT	38
START GMAIL	38
SYNCHRONIZE CONTACT LIST	39
APPLICATIONS	39
MAPS	40
GPS (GLOBAL POSITIONING SYSTEM).....	40
SAFETY PRECAUTIONS	41
TAKING CARE OF YOUR DEVICE	43
COPYRIGHT	46

PHONE LAYOUT

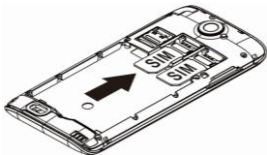


INSERT SIM CARD

When you subscribe to a cellular service, you will receive a Subscriber Identity Module (SIM) card.

To insert SIM card(s):

1. Switch off the mobile phone and remove the rear cover and battery.
2. Insert the SIM card correctly in the card slot(s) (See figure below).



3. Finally insert the battery and place back the rear cover of the mobile phone.



Please keep the SIM Card out of the reach of small children.

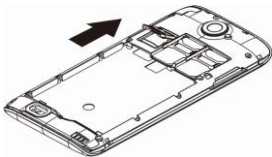


The card and the contacts are vulnerable to damage due to scratching or bending. Therefore, be careful when using, inserting or removing the cards

INSERT MEMORY CARD

To store additional multimedia files, you must insert a memory card.

1. Power off the mobile phone, and then remove the rear cover and battery.
2. Open the memory card slot and insert the memory card into the slot.



3. Finally insert the battery and the rear cover of the mobile phone.

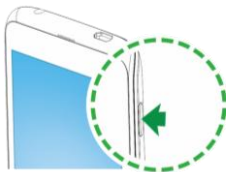


Use only compatible memory cards approved by Micromax with this device. Incompatible memory cards may damage the card or the device and corrupt the data stored in the card.

TURN THE PHONE ON AND OFF

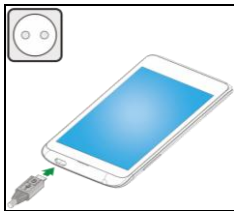
Switch On: Press and hold the Power key for a few seconds.

Switch Off: Press and hold the power key and select switch off.



CHARGE THE BATTERY

Before using the device for the first time, you must charge the battery. You can charge the device with a travel adapter or connecting the device to a PC with a USB cable.



1. Connect the charger to a wall outlet
2. Connect the charger to the device.



Tip: You can charge your handset using the USB port and USB cable.



Use only Micromax approved chargers and cables. Unapproved chargers or cables can cause batteries to explode or damage your device.



We suggest you charge the battery for 4 hours continuously for the first time.

UNLOCK THE PHONE

You may need to provide PIN, Password, or draw a pattern to unlock your phone (depending on the lock settings). To unlock the screen:

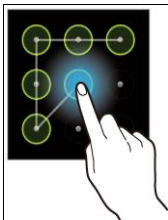
1. Press the power key to wake up the phone.
2. Hold and drag the unlock icon to unlock.

You may be required to unlock your phone based on the unlock method in settings.

To set the unlock method:

1. On the main menu, touch **Settings > Security > Screen lock**.
2. Choose the type of locking as desired. You can set your screen lock on the basis of pattern, PIN, Password or none.

To use pattern Lock, in step 2 above, choose Pattern lock. You can draw your desired pattern by connecting the dots as shown with an example below.



USING THE TOUCH SCREEN

You can use the touch screen in the following ways:

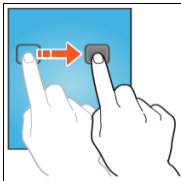
TOUCH AND HOLD

Touch and hold an item. An action occurs depending on the situation.



DRAG AN ITEM

Touch and hold an item and move your finger on the screen until you reach the target position.

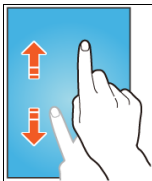


Tap and hold the item, and slide your finger across the screen. The item follows your finger.

You can generally drag items on the home screen.

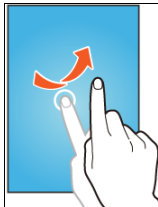
SCROLL

Quickly slide your finger across the surface of the screen, (without dragging an item). For example, slide the screen up or down to scroll a list.



SWIPE

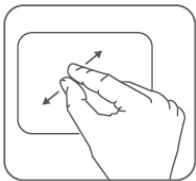
Place a finger on the screen, and steadily slide your finger in the desired direction.



For example, when you are viewing a picture, to view the next picture, swipe left.

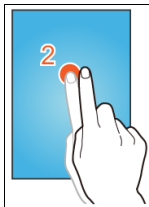
USING THE PINCH ZOOM

You can open any image or web page and then use your thumb and index finger to zoom the display through the pinch gesture as illustrated below.



DOUBLE-TAP

Tap quickly twice on a webpage, map, or other screen to zoom. For example, double-tap a section of a webpage in Browser to zoom that section to fit it to screen size. You can also double-tap to control the Camera zoom, in Maps, and in other applications.



CHANGE THE ORIENTATION

On most screens, the orientation of the screen changes as you rotate it. You can turn this feature on and off.




You can change the screen orientation by rotating the handset.







PLACING AND RECEIVING CALLS

You can dial a phone number or touch a number in your contacts.
You can also place a call from the Call log or messages.

MAKE A CALL

1. Tap the  icon on main menu or the home screen to dial the desired number.
2. Tap on any of the Phone, Call Log or Contacts tab to make a call.
3. Tap on the contact to dial the number.
4. Press the Volume Up/ down keys on the left side to adjust the call volume.

In Call Options



- Touch  to add another call.
- Touch the  icon to mute your voice so that the phone's MIC will not transmit voice to the other end. You can resume transmitting your voice by pressing the  icon again.
- Touch  to put the call on hold.
- Touch the  icon to listen via the speaker.
- End the call by pressing the  icon.

CONFERENCE CALL

Your device supports conference calls (dependent on network service) between select number of participants, including yourself.





If you dial or accept a new call when you are already on a call, you can merge the calls into a conference call.

1. Place a call to the first participant.
2. When you are connected, touch the  icon and dial a number, the first participant is put on hold.
3. When you are connected with the second participant, touch the  icon. A conference call will become active.

MAKE AN INTERNATIONAL CALL

To dial an international number, touch and hold the 'o' key from the dial pad to enter the Plus (+) symbol, and then enter the international country prefix, followed by the phone number.

1. Touch the /  icon to dial the number.
2. Press the **Volume Up/ down** keys on the left side to adjust the call volume.

END A CALL




While during a call, touch the  icon to end the call.

DISABLE PHONE CALLS

- Some locations may require you to turn off your mobile, Wi-Fi, and Bluetooth wireless connections.
- Press and hold the **Power** button and then choose **Airplane Mode**.

USING THE HANDSET'S KEYS


The phone's buttons offer a lot of functions and shortcuts.

Button	Press	Press and hold
	Back: Opens the previous screen you were working on. If the onscreen keyboard is open, closes the keyboard	
	Menu: Opens a menu with items that affect the current screen or Application.	
	Home: Open the Home screen, If you are viewing the left or right Extended Home screen, opens the central Home	Opens the most recently used

THE HOME SCREEN

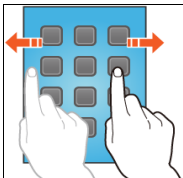
When you start up and unlock the phone, the home screen opens.

The main screen is your starting point to access all the features on your phone.

Touch the launcher icon  at the bottom of the screen to view all installed applications. You can add an application icon to the Home screen by pressing and holding it until it vibrates and enters Home screen and then release your finger.

SWITCH BETWEEN HOME SCREENS

You can shift between the home screens. Swipe left or right on the home screen to display the next home screen.



CUSTOMIZE HOME SCREEN

When the device is in idle mode, you will see the idle screen. From the idle screen, you can view indicator icons, widgets, shortcuts to applications, and other items.

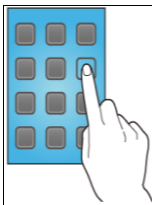
The idle screen has multiple panels. Scroll left or right to the panels on the idle screen.

Add Widgets and icons to home screen

You can customize the idle screen by adding shortcuts to applications or items in applications, widgets, or folders. To add items to the idle screen. Enter Launcher and long press and hold an application till the screen vibrates, and then release your finger hold.

Rearrange or Remove Widgets and Icons on your Home Screen

Long press and hold the widget or icon you want to move. Once the device vibrates, don't release your hold on the icon. Drag the widget or icon to a new location on the screen.



MENU ICONS

You have the following menu icons to easily let you access its important features:



Opens the dialer



Opens messaging



Opens the main menu




Opens the contacts list

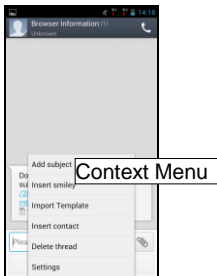
WORKING WITH MENUS

The phone provides you with **Context** menus and **Options** menus for accessing the features in an intuitive way.

CONTEXT MENU

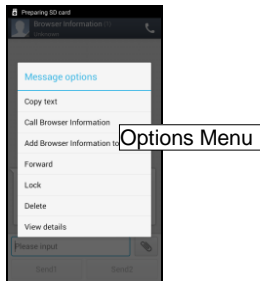
You can open context menu by touching  on any screen.

Not all screens have context menus. If you touch  on a screen that has no context menu, nothing happens.



OPTIONS MENUS

Options menus contain tools that apply to specific items on the screen. You can open an option by touching and holding an item on the screen. Not all items have options menus.



When you touch and hold some items on a screen, an Options menu opens.

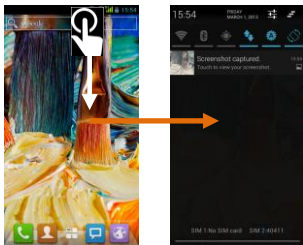
MANAGING NOTIFICATIONS

Notification icons inform you of new messages and events.

When you receive a notification, its icon appears in the status bar, along with a summary that appears only briefly.

OPEN THE NOTIFICATIONS PANEL

Drag the status bar down from the top of the screen as shown below.



The Notifications panel displays your network provider's name and a list of your current notifications.

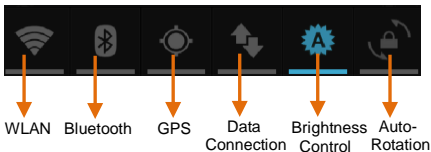
Respond to Notifications

1. Open the notification panel and touch a notification to respond to it.
2. What happens next depends on the notification.

From the notifications panel, you can use the following options:

- **Wi-Fi:** Activate or deactivate the WLAN connection feature.
- **Bluetooth:** Activate or deactivate the Bluetooth wireless connection feature.
- **GPS:** Activate or deactivate the GPS feature.
- **Data Connection:** Choose data connection or disable data connection.
- **Brightness Control :** Adjust brightness according to your requirement.

- Auto rotation: Activate or deactivate the auto rotation feature.

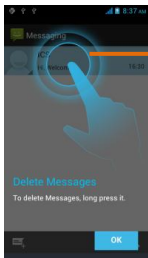


Close Notifications Panel


Drag the tab at the bottom of the Notifications panel to the top of the screen. Or just press the back button. The panel also closes when you touch a notification to respond to it.

MESSAGING

- You can use Messaging to exchange text messages and multimedia messages.







Touch to open
a message

- A Message becomes an MMS if you send it to an email address, or add multimedia media file(s).
- You can use Messaging to exchange text messages and multimedia messages with your friends.
- You can also press the  key and open the context menu to work on messages and their settings.
- A Message becomes an MMS if you send it to an email address, or add multimedia media file(s).

CREATE AND SEND MULTIMEDIA MESSAGE

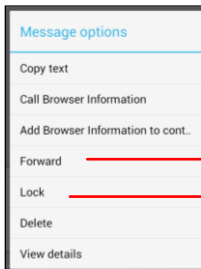
1. Touch  icon.
2. Enter or select a mobile phone number. You can also touch .

icon to add a contact from the contact list.

3. Touch the composition text box and enter your message body.
4. Touch  button and then  to attach various types of attachments.
5. Touch   to send the multimedia message.

FORWARD A MESSAGE

1. Open a message and then touch that message in a message conversation window.



Touch to forward the message.

Tap to lock the message.

2. Touch **Forward** in the menu that opens.
3. Add a contact.

4. Touch   to send the message.

You can also Copy message text, View message details and delete message.

LOCK A MESSAGE

You can lock a message so it won't be deleted if you reach your storage limits.

1. Touch and hold message in a message window.
2. Touch **Lock** in the menu that opens. Unlock a message by touching and holding it and then touch **Unlock**.

USING THE ONSCREEN KEYBOARD



Some applications display the keyboard by default. In others, you touch a text field where you want to enter text, to open the keyboard.



Tap this icon to select desired contact from phonebook

Touch once to capitalize the next letter you type. Touch and hold for caps.

Press space or a punctuation mark to enter the highlighted suggestion.

- Use the  icon to erase characters.
- After typing, press  icon to close the keyboard.
- Press the symbols key to switch to the numbers and symbols keyboard.
- Touch and hold the text field to open a menu and to copy/cut texts.

USE VOICE COMMAND

Menu > Voice Search

Use voice commands to access various useful features on your handset.

1. Tap on  icon.

2. Issue your desired voice command to the phone.


MULTIMEDIA

CAMERA

Your camera's pictures and videos are stored in the SD card, so you must insert one to use the Camera. You can copy pictures and videos from the SD card to a PC and vice versa.



Take a Picture or video

- Touch the Camera icon in the main menu.
- Adjust the exposure and other settings if you wish.
- Touch the  icon to click pictures.

Shoot Videos

- Select the video mode.
- Adjust the quality, effect, and other settings, if you wish.

- Tap the start video icon to start or stop recording.


GALLERY

You can use the Gallery to view pictures and play videos and share files.


1. Touch the Gallery icon in the main menu or in camera mode.
2. Touch an album to open and view its contents.
3. Touch a picture or a video in an album to view it and even share with your friends.

Share an Album



Open the main Gallery window.

1. Long press an album or image to select the object.
2. You can select multiple albums/pictures/videos that you want to share.
3. Tap the  key to share the selected items.
4. You can share via e-mail, Bluetooth, Email, messaging and so on.

MUSIC

- You can easily transfer your favorite music from your PC to the SD card and experience a whole world of interesting and melodious music.
- Touch the  key or the intuitive buttons and icons in the music interface to enjoy the features of your music player.
- Press the phone's volume up/down keys on the left side of the

mobile phone to adjust the volume.

	<i>You can use an SD card to enhance the storage capacity for your various multimedia files such as music, photos emails and so on.</i>
	<i>Notes, tips, or additional information</i>


COPY SONGS FROM YOUR PC

Just connect the Handset to your PC using the USB cable and transfer your favorite songs.



FM RADIO

You can listen to your favorite FM channels using the inbuilt FM receiver of your phone.

1. Touch the  key or the intuitive buttons and icons on the phone in Radio interface to enjoy the features of your inbuilt FM radio.

2. Press the phone's volume up/down keys on the left side of the mobile phone to adjust the volume.



RECORD SOUND

Menu > Sound recorder

Tap the  icon to start recording. Tap the  icon to stop the recording.

CONNECT TO NETWORKS AND DEVICES

Your phone can connect to a variety of networks and devices, including Internet, Wi-Fi, GPRS, Bluetooth, devices, such as headsets. You can also transfer files to/from your PC through the data cable.

CONNECT TO THE INTERNET

To configure your Internet:

1. Go to **Settings>Wireless & Networks>More>Mobile Networks>Access**

point names.

2. Select the access point name or change the access point name for your Internet connectivity as provided by the service provider of your SIM card.

By default, your network provider sends the access point name settings via SMS, or it comes with your SIM card. You may need to install these settings. After this, you can choose from the listed access point names. If the access point names are not listed by default, please contact your network provider for the same.

USING A113 AS A MODEM FOR INTERNET CONNECTIVITY

You can use your device as a modem and connect your PC or laptop to the Internet when required. This means that you can browse the Internet on your PC using your mobile phone. To do this:

1. Connect your mobile phone to your PC via the USB cable.
2. Go to **Settings> Wireless & Networks> Tethering & portable hotspot** and then touch **USB Tethering**.

A prompt driver for installation will appear on your PC. Proceed as suggested.

- In case of Linux, Windows 7 and Vista OS, the drivers get automatically installed.
- However, in case of Windows XP, you need to manually install the drivers. If you do not have the driver, you can download it from www.micromaxinfo.com.

Note: Your mobile operator will charge you based on your GPRS data usage.

Connectivity via Wi-Fi Hotspot

You need to insert a Data Service enabled SIM card on your phone to use your A113 as a router.

1. Go to **Settings> Wireless & networks>More>Tethering & Portable hotspot.**
2. Configure your Wi-Fi hotspot as suggested.
3. Make sure your computer has Wi-Fi. After connecting to the Wireless network, you can use the GPRS service from your A113.

Note: Your mobile operator may charge you based on your GPRS data usage.

Bluetooth Tethering

You can share your phone's internet connection via Bluetooth.

1. Go to **Settings>Wireless & networks>More>Tethering & Portable hotspot> Bluetooth tethering.**
2. Select the **Bluetooth Tethering** option to share your phone's internet connection.

PAIR WITH BLUETOOTH DEVICES

1. Go to **Settings > Wireless & networks** and tap **Bluetooth** and turn it on.
2. Your phone scans and displays the Bluetooth devices in range.
3. If the device you want to pair with is not in the list, make it discoverable.
4. If your phone stops scanning before you make the other device discoverable, touch **Scan for devices.**
5. Touch the ID of the other device in the list in Settings to pair them. If you are prompted to for a passkey, enter the passkey on one device and enter

the same passkey you entered in the other device to be paired. If the pairing is successful, your phone connects to the device.

MANAGE ACCOUNTS

You can set up a corporate, Google account etc on your device. You can do this by tapping **Settings> Accounts> Add Account**:

You may also be able to add other kinds of accounts, depending on your application.

GOOGLE ACCOUNT

Your Google Account lets you take full advantage of Google applications and services that you may want to use, such as Gmail, Maps, Navigation, and various other applications.

START GMAIL

You can use Gmail to read and write email from any mobile device or browser. All your email is always up to date and available no matter where you check it from.

But Gmail is not just about email. Your Gmail name and password signs you into to all Google apps and services, including Calendar; People, for keeping track of your contacts; for storing and organizing your pictures; Google Reader, for keeping up with your online reading; Google Documents, for working with documents, spreadsheets, or drawings; and many more.

SYNCHRONIZE CONTACT LIST

Settings> Accounts>Add Account

To synchronize an account you will need to first have a Gmail account . You can either add a new account or can use existing account.

1. Enter your **Email ID** and **Password** and tap **Next**.
2. Choose the account options that display and tap **Next**.

Follow the suggested steps.

Your contacts synchronization will be complete in a few seconds.

To Auto-Sync an Existing Account:

You can sync your Gmail contacts to your phone and vice versa.

It is recommended to save your contacts to your Gmail account. Because you may lose your contacts stored in your phone after a factory reset.

1. Tap on an existing account.
2. Tap **Sync Contacts**. (All phone contacts will be copied to that email account with details).

For this feature to work, you need to have Internet connectivity via your SIM or Wi-Fi. If your Sync does not proceed as expected, check whether data option is set to ON.

APPLICATIONS

Your phone comes with a host of applications to make your life easier and more convenient. Explore the various applications and the features that come with your device and enjoy the advantage.

MAPS

Google Maps is a web based service offered by Google Inc. which offers you access to various map based services. You can view various streets, landmarks and can even plan your routes with the help of Google Maps. It also comes with a navigation system (GPS required) which gives turn by turn route guidance while driving or walking. You can even download maps for offline usage. This serves as a useful application for your day to day usage.

Note:

- Internet connection is required for using Google Maps. For information on activating internet connection refer to the section 'Connect to the Internet'.
- The Google Maps application may not be available in every market, country or region.
- Micromax does not warrant the accuracy of any directional services.
- When you use the map, you use your internet connection to transfer data to and from your phone. To avoid data transfer costs, you can download and save the map to your phone.

To select the required settings;

1. Go to **Settings> Personal> Location Access**.
2. Enable **Access my Location** option and **GPS satellites**.
3. Tap the **Maps** icon in the applications menu to start using Google Maps.

GPS (GLOBAL POSITIONING SYSTEM)

Global Positioning System is a satellite based system that provides location information to the users. Your device has an in-built receiver that receives signals from the satellites.

You can drop down the notification panel and tap on the GPS icon to turn on/off the GPS.

Alternatively, you can;

1. Go to **Settings> Personal> Location Access**.
2. Enable **Access my Location** option and **GPS satellites**.

You can use these settings for using applications such as Google Maps.

Note:

- GPS services are dependent on the services provided by your mobile operator. If you do not have appropriate service on your mobile then you may not be able to use the GPS service.
- As GPS consumes battery life, it is advised that you switch on GPS only when it is needed.

SAFETY PRECAUTIONS



Remember to comply with legal requirements and local restrictions when using the phone, for example, in airplanes, petrol stations, hospitals.



Your Phone's radio waves may interfere with the functioning of inadequately shielded medical devices. Consult a physician or the manufacturer of the medical device to determine whether they are adequately shielded from external Radio Frequency.

Switch off your device when regulations posted instruct you to do so.



Always keep the phone and accessories out of reach of small children. Small parts such as the SIM card, dust cap, lens ring and lens cap as well as the micro SD card can be dismantled and swallowed by small children.



Do not place the phone near to electromagnetic data carriers such as credit cards and floppy disks. Information stored on them could be lost.



Permanent hearing loss may occur if you use earphones or headphones at high volume. You can adapt over time to a higher volume, which may sound normal but can be damaging to your hearing. Set your volume to a safe level. If you experience discomfort or buzzing in your ears, reduce the volume or discontinue use of your earphones or headphones.



Ring tones, info tones and hands-free talking are reproduced through the loudspeaker. Do not hold the phone to the ear when it rings or when you have switched on the hands-free function.



The mains voltage (V) specified on the power supply unit must not be exceeded. Otherwise the charging device may be damaged. The power supply must be plugged into an easily accessible AC mains power socket when charging the battery. The only way to turn off the charging device after charging the battery is to unplug it.



You may only open the phone to replace the battery, SIM and microSD card. You must not open the battery under any circumstances. All other changes to this device are strictly prohibited and will invalidate the warranty.



The phone may cause interference in the vicinity of TV sets, radios and PCs.



Use only Micromax specified batteries and charging devices.

All batteries can cause property damage, injury or burns if a conductive material such as jewelry, keys or beaded chains touch exposed terminals. Exercise care in handling any charged battery, particularly when placing it inside your pocket, purse or other container with metal objects. Do not dispose of batteries in fire as they may explode.



1. Do not use the phone while driving. When you have to use the phone, please use the personal hands-free kit.
2. Please put the phone safely in the phone stand. Do not put it onto any passenger seat or any place from which it may fall down in case of vehicular collision or emergency braking.



Flight is influenced by interference caused by the phone. It is illegal to use a phone on the airplane. Please turn off your phone during a flight.



Professional service: The phone must be installed or repaired by no personnel other than professionals. You are likely to suffer a huge risk when you install or repair this phone by yourself, which also goes against the warranty rules.

TAKING CARE OF YOUR DEVICE

Your device is a product of superior design and craftsmanship and should be handled with care: The following suggestions will help you protect your phone:

- Keep the device dry. Precipitation, humidity, and all types of

liquids or moisture can contain minerals that will rust electronic circuits. If your device does get wet, remove the battery without turning on the device, wipe it with a dry cloth and take it to the service center.

- Do not store the device in high or cold temperature. High temperatures can shorten the life of electronic devices and damage batteries.
- Do not use or store the device in dusty, dirty areas. Its moving parts and electronic components can be damaged.
- Do not attempt to open the device other than as instructed in this guide. Repairing this phone by yourself other than our authorized service agents/centers goes against the warranty rules.
- Do not drop, knock, or shake the device. Rough handling can break internal circuit boards and fine mechanics.
- Do not use harsh chemicals, cleaning solvents, or strong detergents to clean the device. Only use a soft, clean, dry cloth to clean the surface of the device.
- Do not store your device near magnetic fields or allow your device to come in contact with magnetic fields for extended period of time.
- Location: The socket-outlet shall be installed near the equipment and shall be easily accessible.

Battery Recommendations

- Please put the battery in a cool and well-ventilated place out of direct sunlight. We recommend you to charge the battery at

room temperature range.

- Batteries have life cycles. If the time that the battery powers equipment becomes much shorter than usual, the battery life is at an end. Replace the battery with a new battery of the same make and specification.
- Use manufacturer approved batteries, chargers, accessories and supplies. Micromax will not be held responsible for user's safety when using unapproved accessories or supplies.
- Do not discard the battery with household trash. Please dispose of used battery according to your local environmental laws and guidelines.
- Warnings on Battery:
 - (a) Please use appointed battery in case of explosion risk.
 - (b) Please dispose of lifeless battery under guidance.

Recycle your Phone



The WEEE logo (shown at the left) appears on the product (battery, handset, and charger) to indicate that this product must not be disposed off or dumped with your other household wastes. You are liable to dispose of

all your electronic or electrical waste equipment by relocating over to the specified collection point for recycling of such hazardous waste.

Collection and proper recovery of your electronic waste equipments at the time of disposal will allow us to help preserve the environment. Recycling of the electronic waste equipment will ensure safety of human health and environment. For more information on best practices for disposal of electronic and electrical waste, please visit to our web site: www.micromaxinfo.com/weee.php

COPYRIGHT

All rights reserved. Reproduction, transfer, distribution or storage of part or all of the contents in this document in any form without the prior written permission of Micromax is strictly prohibited.