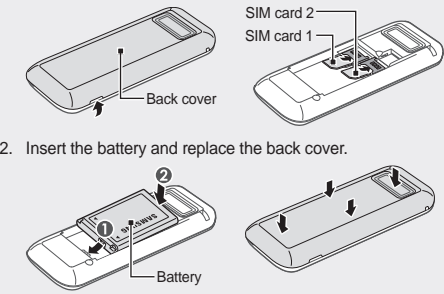


Your phone displays the following status indicators on the top of the screen:

Icon	Description
	Signal strength
	Call in progress
	Call diverting activate
	SOS message feature activated
	FM radio on
	FM radio suspended
	Alarm activated
	Roaming (outside of normal service area)
	New text message (SMS)
	New voice mail message
	Normal profile activated
	Silent profile activated
	Battery power level
	Bluetooth activated
	Memory card inserted

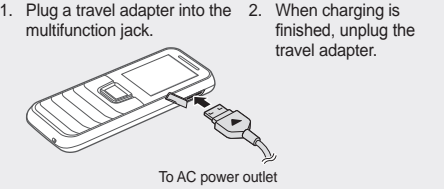
Install the SIM card and battery

- Remove the back cover and insert the SIM card.
- Insert the battery and replace the back cover.



Charge the battery

- If the battery is completely discharged, you cannot turn on the device, even with the travel adapter connected. Allow a depleted battery to charge for a few minutes before you try to turn on the device.

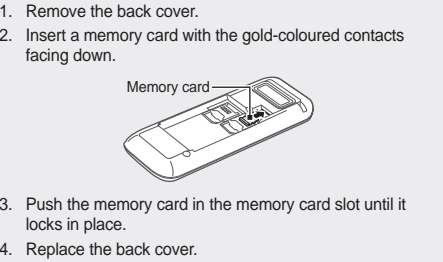


- Do not remove the battery before removing the travel adapter. Doing this may cause damage to the phone.
- To save energy, unplug the travel adapter when not in use. The travel adapter does not have a power switch, so you must unplug the travel adapter from the outlet when not in use to avoid wasting power. The travel adapter should remain close to the socket when in use.

Insert a memory card (optional)

Your phone accepts microSD™ or microSDHC™ memory cards up to 4 GB (depending on memory card manufacturer and type).

- Formatting the memory card on a PC may cause incompatibility with your phone. Format the memory card only on the phone.
- Frequent writing and erasing of data will shorten the life span of memory cards.



Push the memory card in the memory card slot until it locks in place.

Replace the back cover.

Instructional icons

	Note: notes, usage tips, or additional information
	Followed by: the order of options or menus you must select to perform a step; for example: In Menu mode, select Messages → Create message (represents Messages , followed by Create message)
	Square brackets: phone keys; for example: [] (represents the Power/End key)
	Angled brackets: softkeys that control different functions at each screen; for example: <> (represents the OK softkey)

Turn your phone on or off

- To turn your phone on,
- Press and hold [].
 - Enter your PIN and press <**Confirm**> (if necessary).
 - When the setup wizard opens, customise your phone as desired by following the screen.

- If the battery remains fully discharged or removed from the device, the time and date will be reset.

To turn your phone off, repeat step 1 above.

To activate SIM cards

- In Menu mode, select **Settings** → **SIM cards management**.
- Select **Network** and scroll left or right to a SIM card.
- Press <**Change**> to activate the card.

To switch SIM cards automatically

- In Menu mode, select **Settings** → **SIM cards management**.
- Select **SIM auto switch**.
- Press <**Change**> to activate the auto switch feature.
- Select a SIM card and set the starting and ending time to switch to the SIM card.
- Press <**Save**>.
- Repeat steps 4-5 for another SIM card.

To change the names and icons of the SIM cards

- In Menu mode, select **Settings** → **SIM cards management**.
- Select **Register card**.
- Scroll left or right to a SIM card.
- Press <**Select**> and change the name and the icon of the card.
- Press <**Back**>.
- Repeat steps 3-5 for another SIM card.

Make a call

- In Idle mode, enter an area code and a phone number.
- Press [] to dial the number.
- To end the call, press [].

Answer a call

- When a call comes in, press [].
- To end the call, press [].

Adjust the volume

To adjust the volume of the ringtone

- In Menu mode, select **Settings** → **Sound profiles**.
- Scroll to the profile you are using.
- If you are using the silent profile, you are not allowed to adjust the volume of the ringtone.
- Press <**Edit**> → **Volume**.
- Scroll to **Call alert**.
- Scroll left or right to adjust the volume level and press <**Save**>.

To adjust the volume of voice during a call

While a call is in progress, press the Navigation key up or down to adjust the volume.

- In noisy environments, you may have difficulty hearing the calls while using the speakerphone feature. For better audio performance, use the normal phone mode.

Change your ringtone

- In Menu mode, select **Settings** → **Sound profiles**.
- Scroll to the profile you are using.

- If you are using the silent profile, you are not allowed to change the ringtone.

- Press <**Edit**>.
- Scroll left or right to a SIM card (if necessary).
- Select **Voice call ringtone**.
- Select a ringtone.

To switch to another profile, select it from the list.

Call a recently dialled number

- In Idle mode, press [] to display a list of recent numbers.
- Scroll left or right to a call type.
- Scroll up or down to a number or name.
- Press the Confirm key to view details of the call or [] to dial the number.

Use the smart home screen

The smart home screen allows you to access applications, contacts, and calendar events or view the clock from Idle mode.

- When you are using the smart home screen, the Navigation key does not work as shortcuts.

To add items to the smart home screen

- In Menu mode, select **Settings** → **Display** → **Smart home**.
- Press <**Edit**>.
- Select the items to display on the smart home screen. For the shortcuts toolbar, you can add or delete the shortcuts as desired. Press <**Options**> → **Edit shortcuts**.
- Press <**Options**> → **Save**.
- Press the Confirm key.

- You can change the idle screen to another style. In Menu mode, select **Settings** → **Display** → **Smart home** and scroll left or right to a style you want.

To access the smart home items

Press the Navigation key to scroll through the items on the smart home screen and press the Confirm key to select an item.

Enter text

To change the text input mode

- Press and hold [**#**] to switch between T9 and ABC modes. Depending on your region, you may be able to access an input mode for your specific language.
- Press [**#**] to change case or switch to Number mode.
- Press [*****] to switch to Symbol mode.
- Press and hold [*****] to select an input mode or change the input language.

Access menus

To access your phone's menus,

- In Idle mode, press <**Menu**> to access Menu mode.
 - You may need to press the Confirm key to access Menu mode depending on your region or service provider. When you are using the smart home screen, you cannot use the Confirm key to access Menu mode.
- Use the Navigation key to scroll to a menu or option.
- Press <**Select**>, <**Save**>, or the Confirm key to confirm the highlighted option.
- Press <**Back**> to move up one level; Press [] to return to Idle mode.
 - When you access a menu requiring the PIN2, you must enter the PIN2 supplied by the SIM card. For details, contact your service provider.
 - Samsung is not responsible for any loss of passwords or private information or other damages caused by illegal software.

Manage your SIM cards

Your phone supports Dual SIM mode that enables you to use two SIM cards at the same time without changing them. Learn to activate SIM cards and change the card settings.

To switch networks

In Idle mode, press and hold [**#**] to switch between networks.

T9 mode

- Press the appropriate alphanumeric keys to enter an entire word.
- When the word displays correctly, press [**0**] to insert a space. If the correct word does not display, press the Navigation key up or down to select an alternate word.

ABC mode

Press an appropriate alphanumeric key until the character you want appears on the display.

Number mode

Press an appropriate alphanumeric key to enter a number.

Symbol mode

Press an appropriate alphanumeric key to enter a symbol.

To use other features for text input

- To move the cursor, press the Navigation key.
- To delete characters one by one, press <**Clear**>. To delete characters quickly, press and hold <**Clear**>.
- To insert a space between characters, press [**0**].
- To start a new line, press [**0**] three times.
- To enter punctuation marks, press [**1**].

Add a new contact

- The memory location to save new contacts may be preset depending on your service provider. To change the memory location, in Menu mode, select **Contacts** → <**Options**> → **Settings** → **Save new contacts to** → a memory location.

- In Idle mode, enter a phone number and press <**Options**>.
- Select **Add to Contacts** → a memory location (if necessary) → **Create contact**.
- Select a number type (if necessary).
- Enter contact information.
- Press the Confirm key to add the contact to memory.

Send and view messages

To send a text message

- In Menu mode, select **Messages** → **Create message**.
- Enter a recipient number and scroll down.
- Enter your message text. *See "Enter text."*
- Press the Confirm key to send the message.

To view text messages

- In Menu mode, select **Messages** → **Inbox**.
- Select a text message.

Make fake calls

You can simulate an incoming call when you want to get out of meetings or unwanted conversations.

To activate the fake call feature

In Menu mode, select **Settings** → **Call** → **Fake call** → **Fake call hot key**.

To make a fake call

- In Idle mode, press and hold the Navigation key down.
- When the keys are locked, press the Navigation key down four times.

Activate and send an SOS message

In an emergency, you can send SOS messages to your family or friends for help.

To activate the SOS message

- In Menu mode, select **Messages** → **Settings** → **SOS messages** → **Sending options**.
- Select **Sending SOS** to activate the SOS message feature.
- Select **Recipients** and press <**Search**> to open your contact list. You can also enter a phone number including a country code (with +). Skip to step 6.
- Press **Add** to select a contact.
- Select a number (if necessary).

- When you are finished setting the recipients, press the Confirm key to save the recipients.
- Select **Repeats** and set the number of times to repeat the SOS message.
- Press <**Back**> → <**Yes**>.

To send an SOS message

- With the keys locked, press [] four times to send an SOS message to preset numbers. The phone switches to SOS mode and sends the preset SOS message.
- To exit SOS mode, press [].

Listen to music

- In Menu mode, select **Muslc**.
- Select a music category → a music file.
- Control playback using the following keys:

Key	Function
Confirm	Pause or resume playback
Navigation	<ul style="list-style-type: none">Left: Restart playback; Skip backward (press within 3 seconds); Scan backward in a file (press and hold)Right: Skip forward; Scan forward in a file (press and hold)Up/Down: Adjust the volume
3	Activate or deactivate Shuffle mode
4	Change the repeat mode

Listen to the FM radio

- Plug a headset into the phone.
- In Menu mode, select **FM radio**.
- Press the Confirm key to start the FM radio.
- Press <**Yes**> to start automatic tuning. The radio scans and saves available stations automatically.

- The first time you turn on the FM radio, you will be prompted to start automatic tuning.

Control the FM radio using the following keys:	
Key	Function
Confirm	Turn the FM radio on or off
Navigation	<ul style="list-style-type: none">Left/Right: Fine-tune the frequency; Search for an available radio station (press and hold)Up/Down: Adjust the volume

Activate the torch light

The torch light on your phone helps you see in dark places. In Idle mode, press and hold the Navigation key up to turn on the torch light. You can also select **Applications** → **Torch light** → <**On**>. To turn off the torch light, press and hold the Navigation key up again.

SAMSUNG
ELECTRONICS

Declaration of Conformity (R&TTE)
We, **Samsung Electronics**
declare under our sole responsibility that the product

GSM Mobile Phone : GT-E1232B

to which this declaration relates, is in conformity with the following standards and/or other normative documents.

SAFETY	EN 60950-1 : 2006+A11:2009
SAR	EN 50360 : 2001 / AC2006 EN 62209-1 : 2006
EMC	EN 301 489-01 V1.8.1 (04-2008) EN 301 489-07 V1.3.1 (11-2005) EN 301 489-17 V2.1.1 (05-2009)
RADIO	EN 301 511 V9.0.2 (03-2003) EN 300 328 V1.7.1 (10-2006)

We hereby declare that [all essential radio test suites have been carried out and that] the above named product is in conformity to all the essential requirements of Directive 1999/5/EC.

The conformity assessment procedure referred to in Article 10 and detailed in Annex[IV] of Directive 1999/5/EC has been followed with the involvement of the following Notified Body(ies):

BABT, Forsyth House, Churchfield Road, Walton-on-Thames, Surrey, KT12 2TD, UK* Identification mark: 0168	CE 0168
The technical documentation kept at : Samsung Electronics QA Lab.	

which will be made available upon request.
(Representative in the EU)

Samsung Electronics Euro QA Lab. Blackbushe Business Park, Saxony Way, Yateley, Hampshire, GU46 6GG, UK* 2011.09.23 (place and date of issue)	Joong-Hoon Choi / Lab Manager (name and signature of authorised person)
--	--

* It is not the address of Samsung Service Centre. For the address or the phone number of Samsung Service Centre, see the warranty card or contact the retailer where you purchased your product.

Downloaded from http://www.gsmarc.com