



LG-A165 USER GUIDE

This manual may differ from the phone depending on the phone software version and service provider used.

P/N: MFL66984710 (1.0)

www.lg.com

CE 0168

Bluetooth QD ID B017062



Installing the SIM card and the handset battery

Installing the SIM card

When you subscribe to a cellular network, you are provided with a plug-in SIM card loaded with your subscription details, such as your PIN, any optional services available and many others.

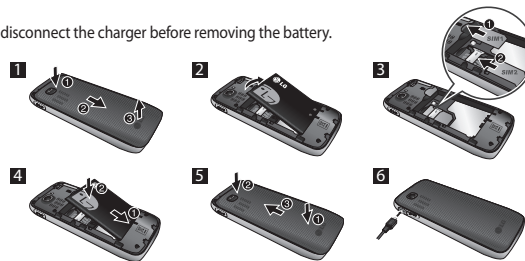
Important! The plug-in SIM card and its contacts can be easily damaged by scratches or bending, so be careful when handling, inserting or removing the card. Keep all SIM cards out of the reach of small children.

Illustrations

Always switch the device off and disconnect the charger before removing the battery.

- 1 Remove the back cover.
- 2 Lift battery away.
- 3 Insert the SIM card.
- 4 Insert the battery pack.
- 5 Attach the back cover.
- 6 Charge the battery.

Note: Fully charge the battery before using it for the first time.



Selecting functions and options

Your phone offers a set of functions that allow you to customize the phone. These functions are arranged in menus and sub-menus, accessed via the two soft keys marked **Menu** and **Names**. Each menu and sub-menu lets you view and alter the settings of a particular function.

The roles of the soft keys vary according to the current context; the label on the bottom line of the screen just above each key indicates its current role.



Press the left soft key or center soft key to access the available Menu.

Press the right soft key to access the available Names (Names).

FM Radio (This function may be different in different regions.)

Listens to FM radio station. You can enjoy listening FM without using headset as phone supports wireless FM service.

1. From main menu select Media then select FM radio.
2. Use navigation keypad to search radio station. You can also press Options to search radio frequency for available channels and automatically store to the channel list.
3. Press **Options** to edit the channel list. There are 9 stations you may pre-set. Your phone provides the following options for FM radio:
 - Record: Records your favorite radio programs.
 - Channel List: Bookmark up to 9 radio stations by entering the channel name and frequency.
 - Manual input: You can input frequency manually by using this option.
 - Minimize: This function allows you to do other work on phone by minimizing FM radio.
 - Auto Search: Auto search available channels and automatically store them to the channel list.
 - Settings: Allows you to switch the record audio quality and the record format. You can record in AMR or WAV formats.
 - Schedule FM record: You can record FM program on schedule when you set up the recording time.
 - Append: Resumes a previously recorded file.

Menu Tree

- | | | | |
|---|--|---|---|
| 1. Messaging <ul style="list-style-type: none">1.1 Create message1.2 Inbox1.3 Drafts1.4 Outbox1.5 Sent items1.6 Saved items1.7 Broadcast message1.8 Templates1.9 Message settings1.10 SOS message | 4. Settings <ul style="list-style-type: none">4.1 Dual SIM settings4.2 Profiles4.3 Display4.4 Connectivity4.5 Call4.6 Phone4.7 Network4.8 Security settings4.9 Restore factory settings | 6. Media <ul style="list-style-type: none">6.1 Camera6.2 Video recorder6.3 Image viewer6.4 Media player6.5 Slide show6.6 Photo editor6.7 FM radio6.8 Voice recorder | 7.8 World time <ul style="list-style-type: none">7.9 Go to7.10 File manager7.11 SIM1 services7.12 SIM2 services |
| 2. Contacts <ul style="list-style-type: none">2.1 Add new contact | 5. Gallery <ul style="list-style-type: none">5.1 My images5.2 My sounds5.3 My videos5.4 My game & apps5.5 Others | 7. Organisr <ul style="list-style-type: none">7.1 Alarm clock7.2 Calendar7.3 To-do list7.4 Notes7.5 Calculator7.6 Stopwatch7.7 Converter | 8. Applications <ul style="list-style-type: none">8.1 My games & apps8.2 Settings |
| 3. Log <ul style="list-style-type: none">3.1 Sim1 call log3.2 Sim2 call log | | 9. Web <ul style="list-style-type: none">9.1 Home9.2 Bookmarks9.3 Last web address9.4 Settings9.5 Go to address9.6 Saved pages9.7 Open file9.8 Recent pages | |

Phone Components



Entering Text

You can enter alphanumeric characters by using the phone's keypad.

T9 Mode

The T9 predictive text input mode lets you enter words easily with a minimum number of key presses. As you press each key, the phone begins to display the characters that it thinks you are typing based on the built-in dictionary.

123 mode

Type numbers using one keystroke per number. You can also add numbers while remaining in letter modes by pressing and holding the desired key.

Symbol Mode

The symbol mode enables you to enter various symbols or special characters. To enter a symbol, select **Options** → **Insert Symbol** or press **Key**. Use the navigation keys to select the desired symbol and press the OK key.

Installing a Memory Card

Using a memory card can expand the available storage space of your mobile phone. To insert a memory card, insert it into the card slot until it clicks into place. Ensure that the golden contact area faces downwards, as shown in the figure.

Note: A memory card is an optional accessory.



Turning Your Phone On and Off

1. Press and hold the End key until the power comes on.
2. Press and hold the End key until the power goes off.

Making a call

1. Enter a phone number including the area code.
2. Press the **[Send]** key or select options > select SIM1 or SIM2 to make voice call > press "ok".
3. To end the call, press the **[End]** key.

Making an international call

1. Press and hold the **[+]** key for the international prefix. The '+' character automatically selects the international access code.
2. Enter the country code, area code, and the phone number.
3. Press the **[Send]** key or select options > select SIM1 or SIM2 to make voice call > press "ok".

Answering a call

1. When you receive a call, the phone rings.
2. Press the **[Send]** key or select option > OK to answer a call.
3. To end the call, press the **[End]** key.

How to set the tone

You may set up the following different profiles to adapt to different environmental conditions.

1. Select Settings from the main menu, then Select Profiles.
2. Select a profile and press [Options - Customize] to set the ring tone.
3. Press the left soft key [OK] and then you can set the desired ring tone.

Your phone also provides the following options to customize tones/alert types:

- › **Tone settings:** Selects a tone type (Incoming call, Power on, Power off, Message, Keypad).
- › **Volume:** Sets desired volume (Ringtone, Key tone).
- › **Alert type:** Selects an alert type (Ring only, Vib. only, Vib. and ring, Vib. then ring) for the ringing tone.
- › **Ring type:** Selects a ring type (Single, Repeat).
- › **Extra tone:** Selects a extra tone (Warning, Error, Camp on).
- › **Answer mode:** If you select the Any key, you can receive a call by pressing any key except the **[End]** key and the right soft key.

Anti Theft Mobile Tracker (ATMT)

Anti-theft mobile tracker (ATMT) allows you to track your lost phone. When someone uses your phone without your permission, the tracking service will be activated.

You are reminded by a text message sent to the default phone number you have set, without the unauthorized user's knowledge. You can always activate the ATMT and configure your personal settings.

To activate Anti-theft mobile tracker

1. From the main menu, select **Settings** > **Security settings** > **Anti-theft mobile tracker** and press **OK**.
2. Then in the Anti-theft mobile tracker menu, edit and save the name in **Sender name** and numbers in **Sending number list**.
3. Select **Set Anti-theft** and press **OK**.
4. Switch **On** or **Off** and press **OK**.
5. Input the security code to enable or disable this function.

Note

- › The default ATMT code is "0000". You have to enter the code before configuring the ATMT settings.

Quick feature reference

This section provides brief explanations of features on your phone.

Messaging Menu 1

Create message: This menu includes functions related to SMS (Short Message Service) and MMS (Multimedia Message Service). You can send SMS to many contacts at a time.

Tip: User can send SMS to Many recipients by selecting 'Add from Contacts' from Send to option. (User can select Maximum 20 contacts from the list). User Can send SMS to groups by selecting Group icon by pressing left navigation key from "Add from Contacts" options.

Inbox: You will be alerted when you have received messages. They will be stored in Inbox.

Tip: SMS Sorting: Inbox Messages can be sorted with the given sorting options for an easy access of messages (Sender, Subject, Unread/read, Message type, Message size).

Drafts: You can save the message temporarily in Drafts.

Outbox: This is a temporary storage folder for the unsent messages or messages that you have sent but fail to deliver.

Sent items: After sending out the message, the text message or multimedia message is saved in the Sent folder.

Saved items: You can access your saved messages.

Broadcast message: Choose whether to receive, block, view or edit channels to receive information service messages (broadcast messages). Also choose the languages of information service messages.

Templates: There are pre-defined messages in the list. You can view and edit the template messages or create new messages.

Message settings: This menu allows you to set features of your network service provider.

SOS message: An emergency message can be sent to the predefined number's (3 maximum) by long press of 9 Key. On long press of 9 key, a popup comes, 'Set SOS message?'. Press 'Yes' then type the required message and input 3 numbers for which you want to send the message in emergency mode and press Save/Done.

Contacts Menu 2

You can search for contacts in phonebook.

Note: Instant searching is available by inputting the initial letter of the name you want to search.

Add new contact: You can add phonebook entries by using this menu.

Log Menu 3

Call log: You can view all lists of outgoing or incoming calls. Select sim1 call log or sim2 call log and from that select the following.

- › **missed calls:** You can view the unanswered calls.
- › **received calls:** You can view the Received calls.

Media player: The player allows you play audio and video files. You can also manage play lists.

Slide show: Slideshow mode will show all the photos in your gallery one at a time as a slideshow.

Photo editor: You can edit images. The editor can resize, clip or add different effects to the picture.

FM radio: You can use FM radio with or without your external earphone. You can listen to your favourite radio station anytime.

Note: You have to insert Ear-mic into Handsfree connector in order to listen to the Radio and keep the good radio reception.

Voice recorder: You can record voice memo.

Organiser Menu 7

Alarm clock: You can set the alarm clock to go on at a specified time.

Calendar: You can see the calendar and add the events here in selected date.

- › **dialled numbers:** You can view the outgoing call numbers.
- › **call duration:** Allows you to view the duration of your incoming and outgoing calls. You can also reset the call timers.
- › **text msg. counter:** This application will count the number of messages received and sent from the phone.
- › **packet data counter:** You can check the amount of data transferred over the network.
- › **call costs:** View the charges applied to your dialled numbers and the call duration of all your received and dialled calls. Also you can do Cost Settings.

Settings Menu 4

Dual SIM settings: Choose from the options what you want to change: Dual SIM open / Only SIM1 open / Only SIM2 open / Flight mode.

Tip: Dual SIM Single Talk : while one of Dual SIM is operating with network such like WAP/JAVA/MMS/ Call, another SIM can not use network related service.

To-do list: You can view, edit and add tasks to do.

Notes: You can add new memo, view and manage saved memos.

Calculator: The calculator provides the basic arithmetic functions: addition, subtraction, multiplication and division.

Stopwatch: This option allows you to use the function of a stopwatch.

Converter: This converts any measurement into a unit you want. There are many types that can be converted into units: Currency, Length, Weight.

World time: The World time function provides time information on major cities worldwide.

Go to: It helps you to go to the menu you search for. You can set the item as Go to.

File manager: This function allows you to view the content in your internal phone memory and the external memory card.

SIM services: Display additional functions or applications provided by your network service provider.

Profiles: You can adjust and customize the phone tones for different events, or environments.

Display: You can change settings for the phone display.

Connectivity:

- › **Bluetooth:** You can adjust setting on BT connection.
- › **Data account:** You can manage data account list that is used for profile setting on WAP or MMS.

Call: You can set the menu relevant to a call.

Tip: Enable the Black list, by selecting Mode to ON in Black list, from Advance Settings. Once you switch On the Black List Mode, Type the Required Number to be in the Black List and save it. User can not receive any calls from the numbers which are saved in Black list.

Phone:

- › **Time and date:** Set date, time, time zone, and formats.
- › **Schedule power on/off:** This menu allows you to set up time for the phone automatically power on or off. Once the time is set by you, the phone will power on automatically at the time specified. As for the powering off, the phone will ask you for the confirmation before

Applications Menu 8

My games & apps: Your LG-A165 comes with preloaded games to keep you amused when you have time to spare. If you choose to download any additional games or applications they will be saved into this folder. Press Menu and select Applications. Choose My games & apps.

Web Menu 9

Home: Connects to a homepage. The homepage will be the site which is defined in the activated profile.

Bookmarks: This menu allows you to store the URL of favorite web pages for easy access at a later time.

Last web address: You can view the latest page when you connected internet.

Settings: You can set the profile, cache and security related to internet service.

Go to address: You can connect directly to the site you want. After entering a specific URL, press OK key to make the connection done to connect to the site.

- › powering off at the time specified by you. You can specify up to 4 different times.
- › **Language/Writing language:** You can change the language for the display texts in your phone. This change will also affect the Language Input mode.
- › **Themes:** Allows you to change the whole look of your phone display.
- › **Greeting text:** This menu allows you to customize the greeting text upon the phone's power on. You can also choose whether you want the greeting text on or off upon power on.
- › **Dedicated key:** Allows you to change the preferences on the Hotkeys that are currently assigned for your navigation keys (when in standby mode).
- › **Auto update of date and time:** Allows you to set the phone to automatically update the time and date according to the current local time zone.
- › **UART settings:** User will be able to perform the operation from PC using modem for selected SIM card in UART settings (like AT command using HyperTerminal, PC dialup). User will be able to make the GPRS dialup on PC using the SIM which is selected in

Saved pages: Allows you to view your saved web pages.

Open file: You can open the following files saved in the phone. WML, XHTML, HTM, HTML.

Recent pages: This menu shows the history of recently browsed pages.

PC Sync

You can synchronise your PC with your phone to make sure all your important details and dates match. You can also backup your files (Multimedia files) to put your mind at ease.

Note: For this User have to connect Mobile with PC through USB cable and Select the option "COM port".

Note: Install PC Suite using CD provided and follow the Installation Guide. Connect Mobile with PC through USB cable and Select the option "COM port".

- › UART setting for e.g. if SIM1 is selected then user will be able to make the connection using selected SIM card.
- › **Misc. settings:** You can set the brightness and time of the display screen.
- › **Network:** You can set select network and network mode settings using this menu. Also you can add a preferable network to be connected to Preferred lists.

Security settings:

- › **sim1/sim2 security settings:** This menu allows you to set the phone's safety.
- › **Phone lock:** You can use a security code to avoid unauthorized use of the phone.
- › **Auto keypad lock:** You can make the key pad locked automatically after some time.
- › **Change password:** Changing your phone password, enter the old code followed by the new code.
- › **Anti-theft mobile tracker:** The ATMT feature of this phone provides you with the ability to have a tracking system in place for your mobile in case you lose or misplace it.

Restore factory settings: You can initialize all factory defaults. You need Security code to activate this function.

Gallery Menu 5

My images: Shows the list of image files.

My sounds: Saved audio files are displayed in the list.

My videos: Displays the list of video files.

My game & apps: You can access a great selection of games and applications on your phone.

Others: When you receive files of an undefined format via Bluetooth, the files are saved in this folder.

Media Menu 6

Camera: You can take photos with the built in camera and adjust its settings to suit your needs.

Video recorder: You can record a video clip through the built-in camera.

Image viewer: Choose to view the picture with options after taking a photo.

Guidelines for safe and efficient use

Please read these simple guidelines. Not following these guidelines may be dangerous or illegal. Further detailed information is given in this manual.

Warning

- › For your safety, use ONLY specified ORIGINAL batteries and chargers.
- › Switch off the phone in any area where required by special regulations, e.g. in a hospital where it may affect medical equipment.
- › Batteries should be disposed off in accordance with relevant legislation.

Product care and maintenance

WARNING! Only use batteries, chargers and accessories approved for use with this particular phone model. The use of any other types may invalidate any approval or warranty applying to the phone, and may be dangerous.

- › Do not disassemble this unit. Take it to a qualified service technician when repair work is required. Repairs under warranty, at LG's option, may include replacement parts or boards that are either new or reconditioned, provided that they have functionality equal to that of the parts being replaced.
- › The unit should be kept away from heat sources such as radiators or cookers.
- › Use a dry cloth to clean the exterior of the unit. (Do not use any solvents.)
- › Do not keep the phone next to credit cards or transport tickets; it can affect the information on the magnetic strips.

Guidelines for safe and efficient use (Continued)

Electronic devices

All mobile phones may get interference, which could affect performance.

- › Do not use your mobile phone near medical equipment without requesting permission. Avoid placing the phone over a pacemaker, i.e. in your breast pocket.

Road safety

Check the laws and regulations on the use of mobile phones in the areas when you drive.

- › Do not use a hand-held phone while driving.
- › Use a hands-free kit, if available.
- › Pull off the road and park before making or answering a call if driving conditions so require.

Blasting area

Do not use the phone where blasting is in progress. Observe restrictions, and follow any regulations or rules.

Potentially explosive atmospheres

Do not use the phone at a refueling point. Do not use near fuel or chemicals.

In aircraft

Wireless devices can cause interference in aircraft.

Accessories

There are various accessories for your mobile phone. You can select these options according to your personal communication requirements.

Standard Battery



Travel Adapter



Note

- › Always use genuine LG accessories. Failure to do this may invalidate your warranty.
- › Accessories may be different in different regions; please check with our regional service company or agent for further enquires.

Headset



USB cable and PC SUITE CD



Guidelines for safe and efficient use (Continued)

- › Turn off your mobile phone before boarding any aircraft.

Children

Keep the phone in a safe place out of children's reach. It includes small parts which if detached may cause a choking hazard.

Emergency calls

Emergency calls may not be available under all cellular networks. Therefore, you should never depend solely on the phone for emergency calls. Check with your local service provider.

Battery information and care

- › You do not need to completely discharge the battery before recharging. Unlike other battery systems, there is no memory effect that could compromise the battery's performance.
- › Use only LG batteries and chargers. LG chargers are designed to maximize the battery life.
- › Do not disassemble or short-circuit the battery pack.
- › Replace the battery when it no longer provides acceptable performance. The battery pack may be recharged hundreds of times before it needs to be replaced.
- › Do not expose the battery charger to direct sunlight or use it in high humidity, such as the bathroom.
- › Risk of explosion if battery is replaced by an incorrect type.

Technical Data

General

- › **Product name :** LG-A165
- › **System :** GSM 850 / E-GSM 900 / DCS 1800 / PCS 1900

Ambient Temperatures

- › **Max :** +55°C (discharging)
+45°C (charging)
- › **Min :** -10°C

Declaration of Conformity		LG Electronics
Regulation Details		
Name	LG Electronics Inc.	
Address	LG Electronics Inc. LG Twin Towers 20, Pyeongseong-dong, Yeongtong-gu-ga, Seoul, Korea 150-725	
Product Details		
Product Name	GSM 850 / E-GSM 900 / DCS 1800 / PCS 1900 Quad Band Terminal Equipment	
Model Name	LG-A165, LG-A165	
Trade Name	LG	
Applicable Standards Details		
RATTE Directive 1999/5/EC EN 301 489-01 V1.8.1, EN 301 489-07 V1.3.1, EN 301 489-17 V2.1.1 EN 301 511 V9.2.2 EN 300 320-1-2001, EN62209-1-2008 EN 60950-1-2001 EN50322 V1.3.1		
Supplementary Information		
The conformity to above standards is verified by the following Notified Body(6087) B486, Pirella Göttsche Christoffel Bloor - Notified on Thermology - 4712 072, United Kingdom Notified Body Identification Number : 0168		
Declaration		
I/We hereby declare under our sole responsibility that the product mentioned above to which this declaration relates complies with the above mentioned standards and Directives		Name Seung Myoung, J. / Director 20 July 2010
LG Electronics is a signatory and Services B.S. Annexure 15, 15.17 of Annex, The Telecommunications		Signature of representative

Product Authentication program

Dear Customers,

To protect all LG customers from counterfeit and grey market products and make sure that you receive official warranty service, LG is now running a product authentication program.

To make sure your handset is a genuine product of LG, ONLY one SMS containing the IMEI No. of your purchased handset will be automatically sent to LG on the date of purchase.

Once your phone is authenticated, you will receive the message 'Your handset is a genuine LG product.'

The customer shall bear the cost of one SMS for the product authentication program.

In return, you will receive one additional month of warranty for free. One additional month of warranty covers only mobile phone, not batteries and accessories.

The IMEI No. sent to LG guarantees your handset to be free from manufacturing defects during the warranty period from the date of purchase without proof of purchase or warranty card.