

# Nokia 200 User Guide

**Contents****Safety****4****Get started****5**

Your dual SIM phone	5
Keys and parts	5
Insert a SIM card and battery	6
Insert a second SIM card	7
Charge the battery	8
Switch the phone on or off	9
Insert a memory card	9
GSM antenna	10
Connect a headset	11
Attach the wrist strap	11

**Basic use****11**

Support	11
Access codes	12
Set which SIM card to use	12
Lock the keys	13
Indicators	13
Copy contacts or pictures from your old phone	14
Use your phone without a SIM card	14

**Calls****14**

Make a call	14
View your missed calls	15
Call the last dialled number	15
Divert calls to your voice mailbox or another phone number	15

**Contacts****16**

Save a name and phone number	16
Use speed dial	16
Send your contact information	17

**Write text****17**

Write using the keyboard	17
Predictive text input	18

**Messaging****18**

Send a message	18
Save an attachment	19
Retrieve a multimedia message	20
Listen to voice messages	20
Send an audio message	20

**Mail and chat****21**

About Mail	21
Send a mail	21
Read and reply to mail	21
About Chat	21
Chat with your friends	21

**Connectivity****22**

Bluetooth	22
USB data cable	24

**Clock****24**

Change the time and date	24
Alarm clock	24

**Pictures and videos****25**

Take a picture	25
Record a video	25
Send a picture or video	26
Organise files	26

**Music and audio****26**

Media player	26
FM radio	27

**Browse the web****29**

About the web browser	29
Browse the web	29
Add a bookmark	30
Fit a web page to your phone display	30
Save on data costs	31
Clear your browsing history	31

**About Social****31**

**Device management 32**

Update device software using your device 32

Update phone software using your PC 33

Restore original settings 34

Back up your pictures and other content to a memory card 34

**Protect the environment 34**

Save energy 34

Recycle 34

**Product and safety information 35**

## Safety

Read these simple guidelines. Not following them may be dangerous or illegal. For further information, read the complete user guide.

### SWITCH OFF IN RESTRICTED AREAS



Switch the device off when mobile phone use is not allowed or when it may cause interference or danger, for example, in aircraft, in hospitals or near medical equipment, fuel, chemicals, or blasting areas. Obey all instructions in restricted areas.

### ROAD SAFETY COMES FIRST



Obey all local laws. Always keep your hands free to operate the vehicle while driving. Your first consideration while driving should be road safety.

### INTERFERENCE



All wireless devices may be susceptible to interference, which could affect performance.

### QUALIFIED SERVICE



Only qualified personnel may install or repair this product.

### BATTERIES, CHARGERS, AND OTHER ACCESSORIES



Use only batteries, chargers, and other accessories approved by Nokia for use with this device. Do not connect incompatible products.

### KEEP YOUR DEVICE DRY



Your device is not water-resistant. Keep it dry.

### PROTECT YOUR HEARING



Listen to a headset at a moderate level, and do not hold the device near your ear when the loudspeaker is in use.

## Get started

### Your dual SIM phone

You can insert two SIM cards.

### Some benefits of a dual SIM phone

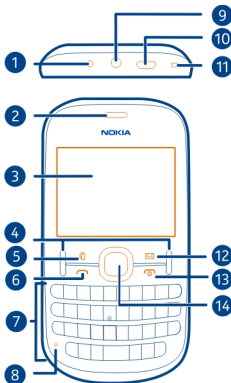
- You can make savings when you use services from different service providers.
- Use one phone number for personal calls and another for work, but carry only one phone.
- Avoid network coverage variation between service providers.

Both SIM cards are available at the same time when the device is not being used, but while one SIM card is active, for example, making a call, the other is unavailable.

If you only have one SIM card, insert the card into the SIM1 card holder. Some features and services may only be available when using the SIM card in the SIM1 card holder. If there is a SIM card only in the SIM2 card holder, you can only make emergency calls.

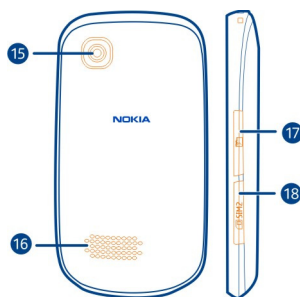
A GPRS connection cannot be open in the background. If an application is using a GPRS connection, and you return to the home screen or switch to another application, menu, or other view, the connection is automatically closed.

### Keys and parts




- 1 Charger connector
- 2 Earpiece
- 3 Screen

- 4 Selection keys
- 5 SIM manager key
- 6 Call key
- 7 Keypad
- 8 Microphone
- 9 Headset connector/Nokia AV connector (3.5 mm)
- 10 Micro-USB connector
- 11 Wrist strap hole
- 12 Messaging key
- 13 End/Power key
- 14 Navi™ key (scroll key)



- 15 Camera lens
- 16 Loudspeaker
- 17 Memory card slot
- 18 SIM card slot (SIM 2)

### Insert a SIM card and battery

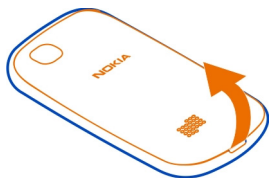
 **Important:** This device is designed to be used with a standard SIM card (see figure) only. Use of incompatible SIM cards may damage the card or the device, and may corrupt data stored on the card. Please consult your mobile operator for the use of a SIM card that has a mini-UICC cutout.



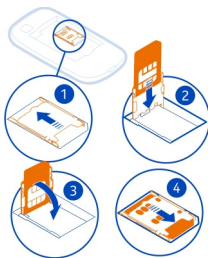
This phone is intended for use with a BL-5J battery. Always use original Nokia batteries.

If you only have one SIM card, insert the card into the internal SIM card holder.

- 1 Place your finger in the recess at the bottom of the phone, and carefully lift and remove the back cover.



- 2 If the battery is inserted, lift it out.
- 3 Slide the SIM card holder to unlock it (1), and use your fingernail to lift it. Make sure the contact area would face down when the SIM card holder is lowered (2), insert the SIM card into the holder, and lower the holder (3). Slide the card holder to lock it (4).

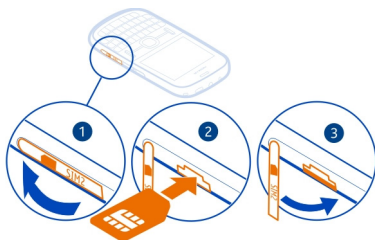


- 4 Line up the contacts of the battery and the battery compartment, and insert the battery. To replace the back cover, direct the top locking catches toward their slots, and press down until the cover locks into place.

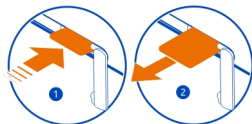
### Insert a second SIM card

Have a second SIM card, but want to keep using your main SIM card? You can insert or remove a second SIM card without switching the phone off.

- 1 Open the cover of the external SIM card slot, marked with **SIM 2**.
- 2 Make sure the contact area of the SIM card is facing up, and insert the card. Push the card in, until it locks into place.
- 3 Close the cover.

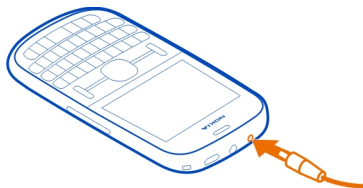


### Remove the second SIM card



### Charge the battery

Your battery has been partially charged at the factory, but you may need to recharge it before you can switch on your phone for the first time. If the phone indicates a low charge, do the following:



- 1 Connect the charger to a wall outlet.
- 2 Connect the charger to the phone.
- 3 When the phone indicates a full charge, disconnect the charger from the phone, then from the wall outlet.


You do not need to charge the battery for a specific length of time, and you can use the phone while it is charging.

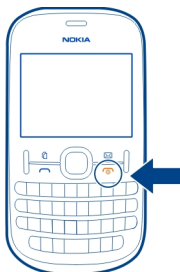


If the battery is completely discharged, it may take several minutes before the charging indicator is displayed or before any calls can be made.

If the battery has not been used for a long time, to begin charging, you may need to connect the charger, then disconnect and reconnect it.

### Switch the phone on or off

Press and hold the power key  until the phone vibrates.



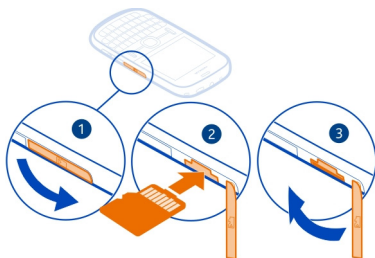
You may be prompted to get the configuration settings from your network service provider. For more information on this network service, contact your network service provider.

### Insert a memory card

Use only compatible memory cards approved by Nokia for use with this device. Incompatible cards may damage the card and the device and corrupt data stored on the card.

Your phone supports memory cards with a capacity of up to 32 GB.

- 1 Open the cover of the memory card slot.
- 2 Make sure the contact area of the memory card is facing up, and insert the card. Push the card in, until it locks into place.
- 3 Close the cover of the memory card slot.



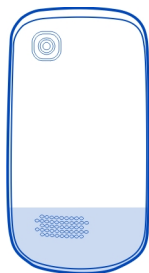
**Important:** Do not remove the memory card when an application is using it. Doing so may damage the memory card and the device and corrupt data stored on the card.

You can remove or replace the memory card without switching the phone off.

### Remove the memory card

Push the card in, until it is released, and pull the card out.

### GSM antenna



The antenna area is highlighted.

Avoid touching the antenna area while the antenna is in use. Contact with antennas affects the communication quality and may reduce battery life due to higher power level during operation.

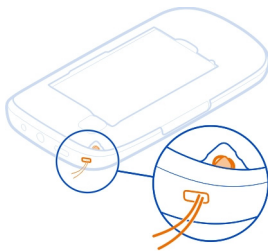
## Connect a headset



Do not connect products that create an output signal, as this may damage the device. Do not connect any voltage source to the Nokia AV connector. If you connect an external device or headset, other than those approved by Nokia for use with this device, to the Nokia AV connector, pay special attention to volume levels.

## Attach the wrist strap

Remove the back cover, thread the strap through the hole, and loop the strap around the wrist strap peg.



Wrist straps may be available separately.

## Basic use

### Support

When you want to learn more about how to use your phone, or if you're unsure how your phone should work, read the user guide thoroughly.

If you have an issue, do the following:

- Reboot your phone. Switch off the phone, and remove the battery. After about a minute, replace the battery, and switch on the phone.
- Update your phone software
- Restore the original factory settings

If your issue remains unsolved, contact Nokia for repair options. Go to [www.nokia.com/repair](http://www.nokia.com/repair). Before sending your phone for repair, always back up your data, as all personal data in your phone may be deleted.

### Access codes

The security code helps to protect your phone against unauthorised use. You can create and change the code, and set the phone to request the code. Keep the code secret and in a safe place separate from your phone. If you forget the code and your phone is locked, your phone will require service. Additional charges may apply, and all the personal data in your phone may be deleted. For more information, contact a Nokia Care point or your phone dealer.

The PIN code supplied with the SIM card protects the card against unauthorised use. The PIN2 code supplied with some SIM cards is required to access certain services. If you enter the PIN or PIN2 code incorrectly three times in succession, you are asked for the PUK or PUK2 code. If you do not have them, contact your service provider.

The module PIN is required to access the information in the security module of your SIM card. The signing PIN may be required for the digital signature. The barring password is required when using the call barring service.

To set how your phone uses the access codes and security settings, select **Menu > Settings > Security**.

### Set which SIM card to use

You can set which SIM card to use for outgoing calls or messages. If you name your SIM cards, you can see at a glance which is, for example, for work and which is for personal use.

Press the SIM manager key.

Select **SIM1** or **SIM2**.

To be prompted to select a SIM card before, for example, making a call or sending a text message, select **Ask every time**.

### Rename a SIM card

Select **Options > Rename**.

## Lock the keys

To avoid accidentally making a call when your phone is in your pocket or bag, lock the keys.

Select **Menu**, and then press **\***.

## Unlock the keys

Select **Unlock**, and press **\***.

## Set the keys to lock automatically

- 1 Select **Menu** > **Settings and Device** > **Automatic keyguard** > **On**.
- 2 Define the length of time after which the keys are locked automatically.

## Indicators



You have unread messages sent to SIM1.



You have unread messages sent to SIM2.



You have unread messages sent to SIM1 and SIM2.



You have unsent, cancelled, or failed messages in SIM1.



You have unsent, cancelled, or failed messages in SIM2.



You have unsent, cancelled, or failed messages in SIM1 and SIM2.



The keypad is locked.



The phone does not ring for incoming calls or text messages.



An alarm is set.



The phone is registered to the GPRS or EGPRS network using SIM1.



The phone is registered to the GPRS or EGPRS network using SIM2.



A GPRS or EGPRS connection from SIM1 is open.



A GPRS or EGPRS connection from SIM2 is open.



The GPRS or EGPRS connection from SIM1 is suspended (on hold).



The GPRS or EGPRS connection from SIM2 is suspended (on hold).



Bluetooth is activated.



If you have two phone lines, the second line is in use.



All incoming calls to SIM1 are diverted to another number.



All incoming calls to SIM 2 are diverted to another number.



All incoming calls to SIM1 and SIM2 are diverted to another number.



The currently active profile is timed.



A headset is connected to the phone.



The phone is connected to another device, using a USB data cable.

### Copy contacts or pictures from your old phone

Want to copy your content from your previous compatible Nokia phone and start using your new phone quickly? You can copy, for example, contacts, calendar entries, and pictures to your new phone, free of charge.



- 1 Activate Bluetooth in both phones.  
Select **Menu > Settings > Connectivity > Bluetooth** and **On**.
- 2 Select **Menu > Settings > Sync and backup**.
- 3 Select **Phone switch > Copy to this**.
- 4 Select the content to copy and **Done**.
- 5 Select your previous phone from the list.
- 6 If the other phone requires a passcode, enter the passcode. The passcode, which you can define yourself, must be entered in both phones. The passcode in some phones is fixed. For details, see the user guide of the other phone.  
The passcode is valid only for the current connection.
- 7 If prompted, allow connection and copying requests.

### Use your phone without a SIM card

Do your children want to play with your phone, but you don't want them to accidentally make a call? Some features of your phone, such as games and the calendar, may be used without inserting a SIM card. Features that are dimmed in the menus cannot be used.

## Calls

### Make a call

- 1 On the home screen, enter the phone number.  
To delete a number, select **Clear**.
- 2 To make the call, press the call key.
- 3 If prompted, select the SIM card to use.

- 4 To end the call, press the end key.

When you receive a call, the SIM card in use is indicated.

### View your missed calls

Want to see who made the call you missed?

On the home screen, select **View**. The caller's name is displayed, if stored in the contacts list.

Missed and received calls are logged only if supported by the network, and the device is switched on and within the network service area.

### Call back the contact or number

Go to the contact or number, and press the call key.

### View the missed calls later

Select **Menu > Contacts > Log and Missed calls**.

### Call the last dialled number

Trying to call someone, but they are not answering? It is easy to call them again.

- 1 On the home screen, press the call key.
- 2 Go to the number, and press the call key.  
If prompted, select the SIM card to use.

### Divert calls to your voice mailbox or another phone number

When you cannot answer, you can divert your calls to your voice mailbox or to another number (network service).

- 1 Select **Menu > Settings > Call > Call divert**.
- 2 Select the SIM card to use.
- 3 Select when to divert the incoming calls:

**All voice calls** — Divert all incoming voice calls.

**If busy** — Divert voice calls when busy.

**If not answered** — Divert voice calls only when not answered.

**If out of reach** — Divert voice calls when the device is switched off or out of network coverage for a certain period.

**If not available** — Divert voice calls when not answered, or the device is busy, or switched off, or out of network coverage.

- 4 Select **Activate > To voice mailbox** or **To other number**.

- 5 If **If not answered** or **If not available** is selected, set the length of time after which a call is forwarded.

### Contacts

#### Save a name and phone number

Select **Menu** > **Contacts**.

Select **Add new**, and enter the number and name.

If prompted, select where to save the contact.

#### Add or edit the details of a contact

- 1 Select **Names** and a contact.
- 2 Select **Options** > **Add detail**.

**Tip:** To add a ringtone or picture for a contact, select the contact and **Options** > **Add detail** > **Multimedia**.

#### Use speed dial

You can quickly call your friends and family when you assign your most-used phone numbers to the number keys of your phone.

You can only use speed dials for the contacts stored on your phone or on the SIM card in the internal SIM card holder.

Select **Menu** > **Contacts** > **More** > **Speed dials**.

#### Assign a phone number to a number key

- 1 Go to a number key, and select **Assign**. 1 is reserved for the voice mailbox.
- 2 Enter a number or search for a contact.

#### Remove or change a phone number assigned to a number key

Go to a number key, and select **Options** > **Delete** or **Change**.

#### Make a call

On the home screen, press and hold a number key.

#### Deactivate speed dialling

Select **Menu** > **Settings and Call** > **Speed dialling** > **Off**.



## Send your contact information

Want to send your phone number or mail address to a person you just met? Add your own contact information to your contacts list, and send a business card to the person.

Select **Menu > Contacts and Names**.

- 1 Select the contacts list entry that contains your information.
- 2 Select **Options > More > Business card** and the sending type.

## Save a received business card

Select **Show > Save**.

# Write text

## Write using the keyboard

Your phone has a full keyboard.

## Set the writing language

Select **Options > Writing language** and the desired language. To change the writing language, you can also press the function key, and then press the ctrl key.

## Switch between number and letter mode

Press the function key repeatedly, until the symbol for the desired input method is displayed.

## Lock number mode

Press the function key twice. To return to normal mode, press the function key.

## Switch between the character cases

Press the shift key.

## Insert a number or character printed at the top right corner of a key

Press and hold the corresponding key.

## Delete a character

Select **Clear**. You can also press the backspace key .

## Insert a special character or symbol

Press the sym key, and select the desired symbol. To view more symbols, press the sym key again.

## Insert a new line

Press the enter key.

### Insert a space

Press the space key.

### Copy or cut text

Press and hold the shift key, and scroll to highlight a word, phrase, or section of text. Press and hold the ctrl key, and then press **C** (copy) or **X** (cut).

### Paste text

Go to the desired location, press and hold the ctrl key, and then press **V**.

### Predictive text input

Predictive text input is based on a built-in dictionary. Not all languages are supported.

### Activate or deactivate predictive text input

Select **Options** > **More** > **Prediction settings** > **On** or **Off**.

### Switch between predictive and traditional text input

Press and hold the ctrl key, and then press the space key.

You can also select and hold **Options**.

### Write text with predictive text input

- 1 Start writing a word, using the character keys. Your phone suggests possible words.
- 2 To confirm a word, press the space key.  
If the word is not correct, scroll through the list of suggested words, and select the desired word.
- 3 Start writing the next word.

## Messaging

### Send a message

Keep in touch with your family and friends with text and multimedia messages. You can attach your pictures, videos, and business cards to your message.

Select **Menu** > **Messaging**.

- 1 Select **Create message**.
- 2 Write your message.
- 3 To add an attachment, select **Options** > **Insert object**.
- 4 Select **Send to**.

- 5 To enter a phone number or mail address manually, select **Number or mail**. Enter a phone number, or select **Mail**, and enter a mail address. To select a recipient or a contact group, select **Contacts** or **Contact groups**.
- 6 Select **Send**.  
If prompted, select the SIM card to use.

**Tip:** To insert a special character or smiley, select **Options > Insert symbol**.

Sending a message with an attachment may be more expensive than sending a normal text message. For more information, contact your service provider.

You can send text messages that are longer than the character limit for a single message. Longer messages are sent as two or more messages. Your service provider may charge accordingly.

Characters with accents, other marks, or some language options, take more space, limiting the number of characters that can be sent in a single message.

If the item you insert in a multimedia message is too large for the network, the device may automatically reduce the size.

Only compatible devices can receive and display multimedia messages. Messages may look different in different devices.

### Save an attachment

You can save attachments from multimedia and mail messages to your phone.

#### Save an attachment from a multimedia message

- 1 Select **Menu > Messaging**.
- 2 Open the message.
- 3 Select **Options > Show contents**.
- 4 Select the desired file and **Options > Save**.

#### Save an attachment from a mail

- 1 Select **Menu > Mail**.
- 2 Open the mail.
- 3 Select the attachment.
- 4 Select **View**, and download the attachment.

Pictures and videos are saved in Gallery.

**Retrieve a multimedia message****Modify settings for multimedia message retrieval**

- 1 Select **Menu > Messaging > More > Message settings > Multimedia messages**.
- 2 Select **SIM1** or **SIM2**. The multimedia message settings apply to both SIM cards.
- 3 Select **MMS reception** and from the following:

**Automatic** — Multimedia messages are always retrieved automatically.

**Manual** — You receive notifications about multimedia messages that you have received in your messaging centre, and you can retrieve the multimedia messages manually.

**Off** — Multimedia message retrieval is deactivated. You do not get notifications about multimedia messages.

If you select **MMS reception > Manual**, you can retrieve multimedia messages manually.

**Retrieve a multimedia message manually**

- 1 Select **Menu > Messaging > Inbox**.
- 2 Open the multimedia message notification, and select **Retrieve**. The multimedia message is downloaded to your phone.

**Listen to voice messages**

When you can't answer, you can divert calls to your voice mailbox and listen to your messages later.

You may need a voice mailbox subscription. For more information on this network service, contact your service provider.


You can only use the voice mailbox with the SIM card in the internal SIM card holder.


- 1 Select **Menu > Messaging > More > Voice messages and Voice mailbox number**.
- 2 Enter your voice mailbox number, and select **OK**.
- 3 To call your voice mailbox, on the home screen, press and hold **1**. If prompted, select the desired SIM card.

**Send an audio message**

Don't have time to write a text message? Record and send an audio message instead.

Select **Menu > Messaging**.

- 1 Select **More > Other messages > Audio message**.
- 2 To record your message, select .

- 3 To stop recording, select .
- 4 Select **Send to** and a contact.

## Mail and chat

### About Mail

Select **Menu** > **Mail**.

You can use your phone to read and send mail from your mail accounts from different mail service providers.

### Send a mail

Select **Menu** > **Mail** and a mail account.

- 1 Select **Options** > **Compose new**.
- 2 Enter the recipient's mail address and the subject, and write your message.
- 3 To attach a file, for example, a picture, select **Options** > **Attach** > **Attach file**.
- 4 To take a picture to attach to the mail, select **Options** > **Attach** > **Attach new picture**.
- 5 Select **Send**.

### Read and reply to mail

Select **Menu** > **Mail** and a mail account.

- 1 Select a mail.
- 2 To reply to or forward a mail, select **Options**.

### About Chat

Select **Menu** > **Messaging** > **Chat**.

You can exchange instant messages with your friends. Chat is a network service.

Using services or downloading content may cause transfer of large amounts of data, which may result in data traffic costs.

### Chat with your friends

Select **Menu** > **Messaging** > **Chat**.

You can sign in to and chat in several services at the same time. You must separately sign in to each service.

You can have ongoing conversations with several contacts at the same time.

- 1 If several chat services are available, select the desired service.
- 2 Sign in to the service.
- 3 In your contacts list, select the contact you want to chat with.
- 4 Write your message in the text box at the bottom of the display.
- 5 Select **Send**.

## Connectivity

### Bluetooth

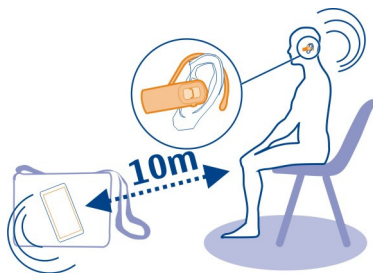
#### About Bluetooth connectivity

Select **Menu > Settings > Connectivity > Bluetooth**.

Use Bluetooth to connect wirelessly to compatible devices, such as other mobile devices, computers, headsets, and car kits.

You can also send items from your device, copy files from your compatible PC, and print using a compatible printer.

Bluetooth uses radio waves to connect, and devices must be within 10 metres (33 feet) of each other. Obstructions, such as walls or other electronic devices, can cause interference.



#### Connect to a wireless headset

Want to keep working at your computer during a call? Use a wireless headset. You can also answer a call, even if your phone is not directly at hand.

- 1 Select **Menu > Settings > Connectivity > Bluetooth and Bluetooth > On**.
- 2 Switch the headset on.
- 3 To pair your phone and the headset, select **Conn. to audio access..**
- 4 Select the headset. If the headset is not in the list, select **New search**.
- 5 You may need to enter a passcode. For details, see the user guide of the headset.

**Send a picture or other content to another device using Bluetooth**

Use Bluetooth to send pictures, videos, business cards, and other content created by you to your computer or a friend's compatible phone or device.

- 1 Select the item to send.
- 2 Select **Options > Send > Via Bluetooth**.
- 3 Select the device to connect to. If the desired device is not displayed, to search for it, select **New search**. Bluetooth devices within range are displayed.
- 4 If the other device requires a passcode, enter the passcode. The passcode, which you can define yourself, must be entered in both devices. The passcode in some devices is fixed. For details, see the user guide of the device.  
The passcode is valid only for the current connection.

The available options may vary.

**Connect automatically to a paired device**

Do you regularly connect your phone to another Bluetooth device, such as a car kit, headset, or your PC? You can set your phone to connect automatically.

Select **Menu > Settings > Connectivity > Bluetooth and Paired devices**.

- 1 Select the phone to connect to automatically.
- 2 Select **Options > Settings > Auto-connect > Yes**.

**Protect your phone**

Do you want to secure who can see your phone when using Bluetooth? You can control who can find and connect to your phone.

Select **Menu > Settings > Connectivity > Bluetooth**.

**Prevent others from detecting your phone**

Select **Device visibility > Hidden**.

When your phone is hidden, others can't detect it. However, paired devices can still connect to your phone.

**Deactivate Bluetooth**

Select **Bluetooth > Off**.

Do not pair with or accept connection requests from an unknown device. This helps to protect your phone from harmful content.

### USB data cable

#### Copy content between your phone and a computer

You can use a USB data cable to copy your pictures and other content between your phone and a compatible computer.

- 1 Use a USB data cable to connect your phone to a computer.
- 2 Select from the following modes:

**Nokia Suite** — Nokia Suite is installed on your computer.

**Media transfer** — Nokia Suite is not installed on your computer. If you want to connect your phone to a home entertainment system or printer, use this mode.

**Mass storage** — Nokia Suite is not installed on your computer. The phone is displayed as a portable device on your computer. Make sure a memory card is inserted. If you want to connect your phone to other devices, such as a home or car stereo, use this mode.

- 3 To copy the content, use the file manager of the computer.  
To copy your contacts, music files, videos, or pictures, use Nokia Suite.

### Clock

#### Change the time and date

Select **Menu > Settings and Date and time**.

#### Change the time zone when travelling

- 1 Select **Date & time settings > Time zone**.
- 2 To select the time zone of your location, scroll left or right.
- 3 Select **Save**.

The time and date are set according to the time zone. This makes sure that your phone displays the correct sending time of received text or multimedia messages.

For example, GMT -5 denotes the time zone for New York (USA), 5 hours west of Greenwich, London (UK).

### Alarm clock

You can set an alarm to sound at a desired time.

#### Set the alarm

- 1 Select **Menu > Apps > Alarm clock**.
- 2 Enter the alarm time.




- 3 To repeat the alarm on selected days of the week, first go to **Repeat:**, and scroll left or right to select **On**. Then go to **Repeat days**, scroll right, mark the desired days of the week, and select **Done**.
- 4 To select the alarm tone, go to **Alarm tone**, and scroll left or right. If you select the radio as the alarm tone, connect a headset to the phone.
- 5 To set the length of the snooze time-out period, go to **Snooze time-out**, and enter the desired time.
- 6 Select **Save**.

### Stop the alarm

Select **Stop**. If you let the alarm sound for a minute or select **Snooze**, the alarm stops for the length of the snooze time-out period, then resumes.

## Pictures and videos

### Take a picture

- 1 Select **Menu > Photos > Camera**.
- 2 To zoom in or out, scroll up or down.
- 3 Select .

The pictures are saved in **Menu > Photos > My photos**.




### Close the camera

Press the end key.

### Record a video

Besides taking pictures with your device, you can also capture your special moments as videos.

Select **Menu > Photos > Video camera**.

- 1 To switch from image mode to video mode, if necessary, select  > **Video c.**
- 2 To start recording, select .  
To zoom in or out, scroll up or down.
- 3 To stop the recording, select .

Videos are saved in **Menu > Photos > My videos**.

### Close the camera

Press the end key.

**Send a picture or video**

Want to share your pictures and videos with friends and family? Send a multimedia message or send a picture using Bluetooth.

Select **Menu** > **Photos**.

- 1 Select the folder containing the picture or video.
- 2 Go to the picture or video, and select **Options** > **Send** and the sending method.

**Send several pictures or videos at the same time**

- 1 Select the folder containing the pictures or videos.
- 2 Select **Options** > **Mark**, and mark the items.
- 3 Select **Options** > **Send marked** and the sending method.

**Organise files**

You can move, copy, and delete files and folders, or create new folders in your phone memory or on the memory card. If you organise your files into their own folders, it might help you find the files in future.

Select **Menu** > **Apps** > **Gallery**.

**Create a new folder**

In the folder where you want to create a sub-folder, select **Options** > **Add folder**.

**Copy or move a file to a folder**

Scroll to the file, and select **Options** > **Move**.

**Tip:** You can also play music or videos, or view pictures in Gallery.

**Music and audio****Media player****Play a song**

Play music stored in the phone memory or on the memory card.

Select **Menu** > **Music** > **My music** and **All songs**.

- 1 Select a song.
- 2 Select **Play**.
- 3 To pause or resume playing, press the scroll key.

**Skip to the beginning of the current song**

Scroll left.

**Skip to the previous song**

Scroll left twice.

**Skip to the next song**

Scroll right.

**Fast-forward or rewind**

Press and hold the scroll key to the right or left.

**Mute or unmute the music player**

Press the ctrl key.

**Close the music player**

Press the end key.

**Set the music player to play in the background**

Select **Options** > **Play in background**.

**Close the music player when it is playing in the background**

Press and hold the end key.

**Play a video**

Play videos stored in the phone memory or on the memory card.

Select **Menu** > **Photos** > **My videos**.

- 1 Select a video.
- 2 Select **Play**.
- 3 To pause or resume playing, press the scroll key.

**Fast-forward or rewind**

Press and hold the scroll key to the right or left.

**Close the media player**

Press the end key.

**FM radio****About the FM radio**

Select **Menu** > **Music** > **Radio**.

You can listen to FM radio stations using your phone - just connect a headset, and select a station.

To listen to the radio, you need to connect a compatible headset to the device. The headset acts as an antenna.



### **Listen to the radio**

Connect a compatible headset to your phone. The headset acts as an antenna.

Select **Menu > Music > Radio**.

### **Change the volume**

Scroll up or down.

### **Close the radio**

Press the end key.

### **Set the radio to play in the background**

Select **Options > Play in background**.

### **Close the radio when it is playing in the background**

Press and hold the end key.

### **Find and save radio stations**

Search for your favourite radio stations, and save them, so you can easily listen to them later.

Select **Menu > Music > Radio**.

### **Search for the next available station**

Press and hold the scroll key left or right.

**Save a station**

Select **Options** > **Save station**.

**Automatically search for radio stations**

Select **Options** > **Search all stations**. For best results, search when outdoors or near a window.

**Switch to a saved station**

Scroll left or right.

**Rename a station**

- 1 Select **Options** > **Stations**.
- 2 Select the station and **Options** > **Rename**.

**Tip:** To access a station directly from the saved station list, press the number key that corresponds to the number of the station.

**Browse the web****About the web browser**

Select **Menu** > **Internet**.

Catch up on the news, and visit your favourite websites. You can use the web browser to view web pages on the internet.

The web browser compresses and optimises web content for your phone, so you can browse the web more quickly and save on data costs.

To browse the web, you must be connected to the internet.

For availability, pricing, and instructions, contact your service provider.

You may receive the configuration settings required for browsing as a configuration message from your service provider.

**Browse the web**

Select **Menu** > **Internet**.

**View your browsing history, featured sites, or your bookmarks**

To switch between the History, Featured, and Favourites tabs, scroll left or right.

**Go to a website**

Write the address in the address bar.

**Search the internet**

Write your search word in the search field. If asked, select your default search engine. You may need to select the SIM card you use to connect to the internet.

**Go back to a previously visited web page**

Open the History tab, then select the web page.

**Tip:** You can download web apps from Nokia Store. When you first open a web app, it is added as a bookmark. For more info, go to [www.nokia.com/support](http://www.nokia.com/support).

**Add a bookmark**

If you visit the same websites all the time, add them as bookmarks, so you can easily access them.

Select **Menu** > **Internet**.

While browsing, select **Options** > **Add to favourites**.

**Go to a bookmarked website**

Open the Favourites tab, and select a bookmark.







**Fit a web page to your phone display**

Your web browser can optimise web pages for your phone display. Instead of having to zoom in, the web page is arranged into a single column of larger, readable text and pictures.

Select **Menu** > **Internet**.

Select **Options** > **Tools** > **Column view**.

To quickly go to different sections of a web page, select from the following:

	/		Go to the previous or next section of the web page.
			Sign in to the web page.
			Go to the main section of the web page.
			Search the web page.
			Read RSS feeds.

The available options may vary.

This view is not available for web sites designed for mobile use.

### Save on data costs

Want to browse the web less expensively? If you do not have a flat-rate data plan, you can reduce the image quality. You can also keep an eye on how much data you are using.

Select **Menu** > **Internet**.

Your web browser uses reduced image quality by default. Increasing the image quality may result in higher data traffic costs.

### Change the image quality

Select **Options** > **Tools** > **Settings** > **Image quality** and the desired image quality.

### Check the amount of data downloaded or uploaded

Select **Options** > **Tools** > **Data usage**.

### Clear your browsing history

Select **Menu** > **Internet**.

Open the History tab, and select **Options** > **Clear history**.

### Clear stored cookies or text saved in web forms

Select **Options** > **Tools** > **Settings** > **Clear cookies** or **Clear auto-fill**.

## About Social

Select **Menu** > **Social**, and sign in to your relevant social networking services.

With the Social application, you can enhance your social networking experience. The application may not be available in all regions. When signed in to social networking services, such as Facebook or Twitter, you can do the following:

- See your friends' status updates
- Post your own status update
- Instantly share pictures you take with the camera

Only those features that are supported by the social networking service are available.

Using social networking services requires network support. This may involve the transmission of large amounts of data and related data traffic costs. For information about data transmission charges, contact your service provider.

The social networking services are third party services and not provided by Nokia. Check the privacy settings of the social networking service you are using as you may share information with a large group of people. The terms of use of the social networking service apply to sharing information on that service. Familiarise yourself with the terms of use and the privacy practices of that service.

### Device management

#### Update device software using your device

Want to improve the performance of your device and get application updates and great new features? Update the software regularly to get the most out of your device. You can also set your device to automatically check for updates.



#### Warning:

If you install a software update, you cannot use the device, even to make emergency calls, until the installation is completed and the device is restarted.

Using services or downloading content may cause transfer of large amounts of data, which may result in data traffic costs.

You can only update your software when using the SIM card in the internal SIM card holder.

Before starting the update, connect a charger or make sure the device battery has enough power.

Select **Menu > Settings**.





- 1 Select **Device > Device updates**.
- 2 To display the current software version and check whether an update is available, select **Current sw details**.
- 3 To download and install a software update, select **Downl. device software**. Follow the displayed instructions.
- 4 If the installation was cancelled after the download, select **Install software update**.

The software update may take several minutes. If there are problems with the installation, contact your service provider.

### Check for software updates automatically

Select **Automatic SW update**, and define how often to check for new software updates.

Your service provider may send device software updates over the air directly to your device. For more information on this network service, contact your service provider.

### Update phone software using your PC

You can use the Nokia Suite PC app to update your phone software. You need a compatible PC, a high-speed internet connection, and a compatible USB cable to connect your phone to the PC.

To get more info and to download the Nokia Suite app, go to [www.nokia.com/support](http://www.nokia.com/support).

### Restore original settings

If your device is not working properly, you can reset some settings to their original values.

- 1 End all calls and connections.
- 2 Select **Menu > Settings and Restore factory sett. > Settings only.**
- 3 Enter the security code.

This does not affect documents or files stored on your device.

After restoring the original settings, your device switches off and then on again. This may take longer than usual.

### Back up your pictures and other content to a memory card

Want to make sure you will not lose any important files? You can back up your device memory to a compatible memory card.

Select **Menu > Settings > Sync and backup.**

Select **Create backup.**

### Restore a backup

Select **Restore backup.**

## Protect the environment

### Save energy

You do not need to charge your battery so often if you do the following:

- Close applications and data connections, such as your Bluetooth connection, when not in use.
- Deactivate unnecessary sounds, such as key tones.

### Recycle



When this phone has reached the end of its working life, all of its materials can be recovered as materials and energy. To guarantee the correct disposal and reuse, Nokia co-operates with its partners through a program called We:recycle. For

information on how to recycle your old Nokia products and where to find collection sites, go to [www.nokia.com/werecycle](http://www.nokia.com/werecycle), or call the Nokia Care contact centre.

Recycle packaging and user guides at your local recycling scheme.



The crossed-out wheeled-bin symbol on your product, battery, literature, or packaging reminds you that all electrical and electronic products, batteries, and accumulators must be taken to separate collection at the end of their working life. This requirement applies in the European Union. Do not dispose of these products as unsorted municipal waste. For more information on the environmental attributes of your phone, go to [www.nokia.com/ecoprofile](http://www.nokia.com/ecoprofile).

## Product and safety information

### Network services and costs

Your device is approved for use on the (E)GSM 900, 1800 MHz networks. To use the device, you need a subscription with a service provider.

Using network services and downloading content to your device requires a network connection and may result in data traffic costs. Some product features require support from the network, and you may need to subscribe to them.

### Take care of your device

Handle your device, battery, charger and accessories with care. The following suggestions help you protect your warranty coverage.

- Keep the device dry. Precipitation, humidity, and all types of liquids or moisture can contain minerals that corrode electronic circuits. If your device gets wet, remove the battery, and allow the device to dry.
- Do not use or store the device in dusty or dirty areas. Moving parts and electronic components can be damaged.
- Do not store the device in high temperatures. High temperatures can shorten the life of the device, damage the battery, and warp or melt plastics.
- Do not store the device in cold temperatures. When the device warms to its normal temperature, moisture can form inside the device and damage electronic circuits.
- Do not attempt to open the device other than as instructed in the user guide.
- Unauthorised modifications may damage the device and violate regulations governing radio devices.
- Do not drop, knock, or shake the device. Rough handling can break internal circuit boards and mechanics.
- Only use a soft, clean, dry cloth to clean the surface of the device.
- Do not paint the device. Paint can clog moving parts and prevent proper operation.
- Switch off the device and remove the battery from time to time for optimum performance.
- Keep your device away from magnets or magnetic fields.
- To keep your important data safe, store it in at least two separate places, such as your device, memory card, or computer, or write down important information.

### Recycle

Always return your used electronic products, batteries, and packaging materials to dedicated collection points. This way you help prevent uncontrolled waste disposal and promote the recycling of materials. Check how to recycle your Nokia products at [www.nokia.com/recycling](http://www.nokia.com/recycling).

### About Digital Rights Management

When using this device, obey all laws and respect local customs, privacy and legitimate rights of others, including copyrights. Copyright protection may prevent you from copying, modifying, or transferring pictures, music, and other content.

Content owners may use different types of digital rights management (DRM) technologies to protect their intellectual property, including copyrights. This device uses various types of DRM software to access DRM-protected content. With this device you can access content protected with WMDRM 10 and OMA DRM 1.0. If certain DRM software fails to protect the content, content owners may ask that such DRM software's ability to access new DRM-protected content be revoked. Revocation may also prevent renewal of such DRM-protected content already in your device. Revocation of such DRM software does not affect the use of content protected with other types of DRM or the use of non-DRM-protected content.

Digital rights management (DRM) protected content comes with an associated licence that defines your rights to use the content.

If your device has WMDRM-protected content, both the licences and the content are lost if the device memory is formatted. You may also lose the licences and the content if the files on your device become corrupted. Losing the licences or the content may limit your ability to use the same content on your device again. For more information, contact your service provider.

### Batteries and chargers

#### Battery and charger information

Your device is intended for use with a BL-5J rechargeable battery. Nokia may make additional battery models available for this device. Always use original Nokia batteries.

This device is intended for use when supplied with power from the following chargers: AC-11. The exact Nokia charger model number may vary depending on the plug type, identified by E, X, AR, U, A, C, K, or B.

The battery can be charged and discharged hundreds of times, but it will eventually wear out. When the talk and standby times are noticeably shorter than normal, replace the battery.

#### Battery safety

Always switch the device off and disconnect the charger before removing the battery. When you unplug a charger or an accessory, hold and pull the plug, not the cord.

When your charger is not in use, unplug it from the electrical plug and the device. Do not leave a fully charged battery connected to a charger, as overcharging may shorten the battery's lifetime. If left unused, a fully charged battery will lose its charge over time.

Always keep the battery between 15°C and 25°C (59°F and 77°F). Extreme temperatures reduce the capacity and lifetime of the battery. A device with a hot or cold battery may not work temporarily.

Accidental short-circuiting can happen when a metallic object touches the metal strips on the battery, for example, if you carry a spare battery in your pocket. Short-circuiting may damage the battery or the connecting object.

Do not dispose of batteries in a fire as they may explode. Dispose of batteries according to local regulations. Recycle when possible. Do not dispose as household waste.

Do not dismantle, cut, open, crush, bend, puncture, or shred cells or batteries. If a battery leaks, do not let battery liquid touch skin or eyes. If this happens, immediately flush the affected areas with water, or seek medical help.

Do not modify, remanufacture, attempt to insert foreign objects into the battery, or immerse or expose it to water or other liquids. Batteries may explode if damaged.

Use the battery and charger for their intended purposes only. Improper use, or use of unapproved batteries or incompatible chargers may present a risk of fire, explosion, or other hazard, and may invalidate any approval or warranty. If you believe the battery or charger is damaged, take it to a service centre for inspection before continuing to use it. Never use a damaged battery or charger. Only use the charger indoors.

### **Additional safety information**

#### **Make an emergency call**

- 1 Make sure the device is switched on.
- 2 Check for adequate signal strength. You may also need to do the following:
  - Insert a SIM card.
  - Deactivate call restrictions you have activated for your device, such as call barring, fixed dialling, or closed user group.
  - Make sure the flight profile is not activated.
- 3 Press the end key repeatedly, until the home screen is displayed.
- 4 Enter the official emergency number for your present location. Emergency call numbers vary by location.
- 5 Press the call key.
- 6 Give the necessary information as accurately as possible. Do not end the call until given permission to do so.



**Important:** Activate both cellular and internet calls, if your device supports internet calls. The device may attempt to make emergency calls both through cellular networks and through your internet call service provider. Connections in all conditions cannot be guaranteed. Never rely solely on any wireless device for essential communications like medical emergencies.

#### **Small children**

Your device and its accessories are not toys. They may contain small parts. Keep them out of the reach of small children.

#### **Medical devices**

Operation of radio transmitting equipment, including wireless phones, may interfere with the function of inadequately protected medical devices. Consult a physician or the manufacturer of the medical device to determine whether they are adequately shielded from external radio frequency energy.

#### **Implanted medical devices**

Manufacturers of medical devices recommend a minimum separation of 15.3 centimetres (6 inches) between a wireless device and an implanted medical device, such as a pacemaker or implanted cardioverter defibrillator, to avoid potential interference with the medical device. Persons who have such devices should:

- Always keep the wireless device more than 15.3 centimetres (6 inches) from the medical device.
- Not carry the wireless device in a breast pocket.
- Hold the wireless device to the ear opposite the medical device.
- Turn the wireless device off if there is any reason to suspect that interference is taking place.
- Follow the manufacturer directions for the implanted medical device.

If you have any questions about using your wireless device with an implanted medical device, consult your health care provider.

### Hearing



#### Warning:

When you use the headset, your ability to hear outside sounds may be affected. Do not use the headset where it can endanger your safety.

Some wireless devices may interfere with some hearing aids.

### Nickel

The surface of this device is nickel-free.

### Protect your device from harmful content

Your device may be exposed to viruses and other harmful content. Take the following precautions:

- Be cautious when opening messages. They may contain malicious software or otherwise be harmful to your device or computer.
- Be cautious when accepting connectivity requests, browsing the internet, or downloading content. Do not accept Bluetooth connections from sources you do not trust.
- Only install and use services and software from sources that you trust and that offer adequate security and protection.
- Install antivirus and other security software on your device and any connected computer. Only use one antivirus application at a time. Using more may affect performance and operation of the device and/or computer.
- If you access preinstalled bookmarks and links to third party internet sites, take the appropriate precautions. Nokia does not endorse or assume liability for such sites.

### Operating environment

This device meets radio frequency exposure guidelines in the normal use position at the ear or at least 1.5 centimetres (5/8 inch) away from the body. Any carry case, belt clip, or holder for body-worn operation should not contain metal and should position the device the above-stated distance from your body.

To send data files or messages requires a quality connection to the network. Data files or messages may be delayed until such a connection is available. Follow the separation distance instructions until the transmission is completed.

### Vehicles

Radio signals may affect improperly installed or inadequately shielded electronic systems in motor vehicles such as electronic fuel injection, electronic antilock braking, electronic speed control, and air bag systems. For more information, check with the manufacturer of your vehicle or its equipment.

Only qualified personnel should install the device in a vehicle. Faulty installation or service may be dangerous and may invalidate your warranty. Check regularly that all wireless device equipment in your vehicle is mounted and operating properly. Do not store or carry flammable liquids, gases, or explosive materials in the same compartment as the device, its parts, or accessories. Remember that air bags inflate with great force. Do not place your device or accessories in the air bag deployment area.

### Potentially explosive environments

Switch off your device in any area with a potentially explosive atmosphere, for example near gas pumps at service stations. Sparks in such areas could cause an explosion or fire resulting in bodily injury or death. Observe restrictions in fuel service stations, storage, and distribution areas; chemical plants; or where blasting operations are in progress. Areas with a potentially explosive atmosphere are often, but not always, clearly marked. They include areas where you would be advised to turn off your vehicle engine, below deck on boats, chemical transfer or storage facilities and where the air contains chemicals or particles such as grain, dust, or metal powders. You should check with the manufacturers of vehicles using liquefied petroleum gas (such as propane or butane) to determine if this device can be safely used in their vicinity.

**Certification information (SAR)**

**This mobile device meets guidelines for exposure to radio waves.**

Your mobile device is a radio transmitter and receiver. It is designed not to exceed the limits for exposure to radio waves recommended by international guidelines. These guidelines were developed by the independent scientific organisation ICNIRP and include safety margins designed to assure the protection of all persons, regardless of age and health.

The exposure guidelines for mobile devices employ a unit of measurement known as the Specific Absorption Rate or SAR. The SAR limit stated in the ICNIRP guidelines is 2.0 watts/kilogram (W/kg) averaged over 10 grams of tissue. Tests for SAR are conducted using standard operating positions with the device transmitting at its highest certified power level in all tested frequency bands. The actual SAR level of an operating device can be below the maximum value because the device is designed to use only the power required to reach the network. That amount changes depending on a number of factors such as how close you are to a network base station.

The highest SAR value under the ICNIRP guidelines for use of the device at the ear is 0.89 W/kg.

Use of device accessories may result in different SAR values. SAR values may vary depending on national reporting and testing requirements and the network band. Additional SAR information may be provided under product information at [www.nokia.com](http://www.nokia.com).

## Copyright and other notices

**DECLARATION OF CONFORMITY**

CE 0434  
CE 0168

Nokia is transitioning between EU Notified Bodies and this product has been approved as complying with EU regulations with both Notified Bodies. Either of the CE marks shown may appear on the product during this transition period.

Hereby, NOKIA CORPORATION declares that this RM-761 product is in compliance with the essential requirements and other relevant provisions of Directive 1999/5/EC. A copy of the Declaration of Conformity can be found at <http://www.nokia.com/global/declaration>.

© 2011 Nokia. All rights reserved.

Nokia, Nokia Connecting People, and Navi are trademarks or registered trademarks of Nokia Corporation. Nokia tune is a sound mark of Nokia Corporation. Other product and company names mentioned herein may be trademarks or tradenames of their respective owners.

Reproduction, transfer, distribution, or storage of part or all of the contents in this document in any form without the prior written permission of Nokia is prohibited. Nokia operates a policy of continuous development. Nokia reserves the right to make changes and improvements to any of the products described in this document without prior notice.



Includes RSA BSAFE cryptographic or security protocol software from RSA Security.



Oracle and Java are registered trademarks of Oracle and/or its affiliates.

This product is licensed under the MPEG-4 Visual Patent Portfolio License (i) for personal and noncommercial use in connection with information which has been encoded in compliance with the MPEG-4 Visual Standard by a consumer engaged in a personal and noncommercial activity and (ii) for use in connection with MPEG-4 video provided by a licensed video provider. No license is granted or shall be implied for any other use. Additional information, including that related to promotional, internal, and commercial uses, may be obtained from MPEG LA, LLC. See <http://www.mpegla.com>.

To the maximum extent permitted by applicable law, under no circumstances shall Nokia or any of its licensors be responsible for any loss of data or income or any special, incidental, consequential or indirect damages howsoever caused.

The contents of this document are provided "as is". Except as required by applicable law, no warranties of any kind, either express or implied, including, but not limited to, the implied warranties of merchantability and fitness for a particular purpose, are made in relation to the accuracy, reliability or contents of this document. Nokia reserves the right to revise this document or withdraw it at any time without prior notice.

The availability of products, features, applications and services may vary by region. For more information, contact your Nokia dealer or your service provider. This device may contain commodities, technology or software subject to export laws and regulations from the US and other countries. Diversion contrary to law is prohibited.

Nokia does not provide a warranty for or take any responsibility for the functionality, content, or end-user support of third-party applications provided with your device. By using an application, you acknowledge that the application is provided as is. Nokia does not make any representations, provide a warranty, or take any responsibility for the functionality, content, or end-user support of third-party applications provided with your device.