



LG-S310 USER GUIDE

This manual may differ from the phone depending on the phone software version and service provider used.

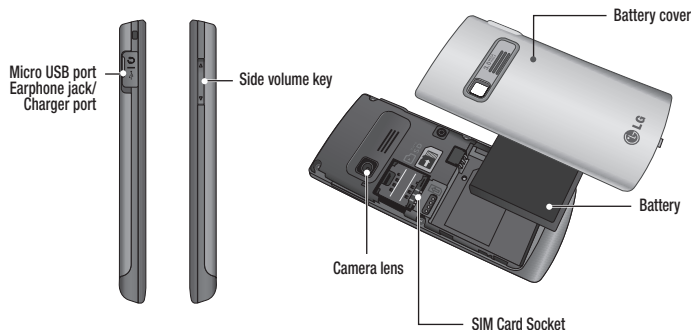
P/N: MFL67003330(1.1)

Bluetooth QD ID B016935



www.lg.com

C € 0168



Installing the SIM card and the handset battery

Installing the SIM Card

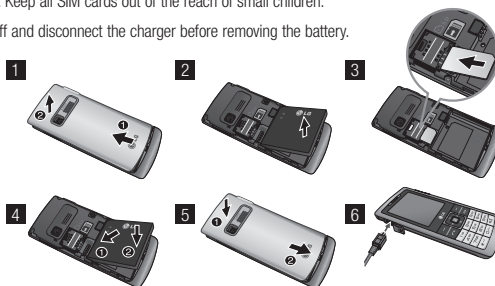
When you subscribe to a cellular network, you are provided with a plug-in SIM card loaded with your subscription details, such as your PIN, any optional services available and many others.

Important! The plug-in SIM card and its contacts can be easily damaged by scratches or bending, so be careful when handling, inserting or removing the card. Keep all SIM cards out of the reach of small children.

Illustrations Always switch the device off and disconnect the charger before removing the battery.

- 1 Remove the back cover.
- 2 Lift battery away.
- 3 Insert the SIM card.
- 4 Insert the battery.
- 5 Attach the back cover.
- 6 Charge the battery.

Note: Fully charge the battery before using it for the first time.



Installing a Memory Card

Remove the battery cover. Push the memory card inside with the gold contact facing upward. To remove the memory card, gently push it as shown in the diagram.

To remove the memory card, gently push it as shown in the diagram.

Note: A memory card is an optional accessory.



This section provides brief explanations of features on your phone.

Messaging

Create message

This menu includes functions related to SMS (Short Message Service) and MMS (Multimedia Message Service).

Inbox

You will be alerted when you have received messages. They will be stored in Inbox.

My mailbox

My Email lets you get your favourite emails on your mobile for a fixed price each month.

Received calls

You can view the Received calls.

Dialled numbers

You can view the outgoing or attempted call numbers.

Call duration

Allows you to view the duration of your incoming and outgoing calls. You can also reset the call timers.

Packet data counter

You can check the amount of data transferred over the network.

Call costs

View the charges applied to your Last call, All calls numbers and can set the limit of calls. Also you can do Cost Settings.

Language - You can change the language for the display texts in your phone. This change will also affect the Language Input mode.

Power save - Choose among the following, Off/Auto/Always On, to change the factory set power saving settings.

Handset information - Shows your phone number, model number and S/W version.

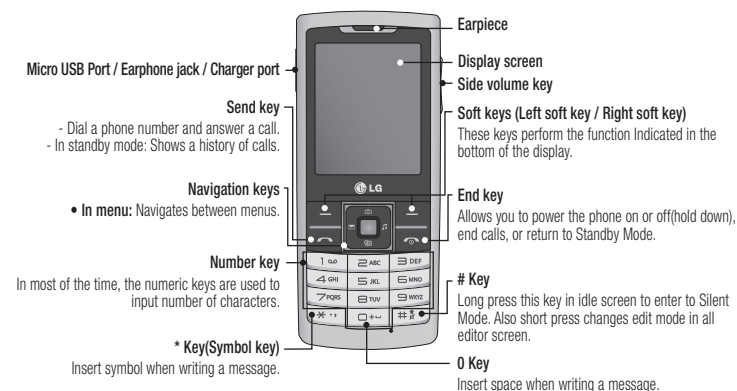
Network

You can set select network and network mode settings using this menu. Also you can add a preferable network to be connected to Preferred lists.

Internet profiles

This menu shows the Internet profiles. You can create new profiles, delete or edit them using the options menu. However, you cannot delete or edit default configurations.

Phone Components



Create new e-mail address

By selecting this menu, you will be directed to Hotmail portal, where you will be able to create Hotmail account. Once you have created the account, you can set it up in the email setup wizard to receive Hotmail emails.

Drafts

You can save the message temporarily in Drafts.

Outbox

This is a temporary storage folder for the unsent messages or messages that you have sent but fail to deliver.

Sent items

After sending out the message, the text message or multimedia message is saved in the Sent folder.

Saved items

You can access your saved messages, text templates and multimedia templates.

Emoticons

A list of useful Emoticons, already written for a quick reply.

SOS message

An emergency message can be sent to the predefined number's (3 maximum) by long press of 9 Key in the idle screen also it can be set from message menu using SOS sub menu. On long press of 9 key in the idle screen, a popup comes, 'Set SOS message?'. Press 'Yes' then set SOS message ON, then type the required message and input maximum 3 numbers in the recipient list for which you want to send the message in emergency mode and press Done.

Message settings

This menu allows you to set features of your network service provider.

Contacts

Names

Select Search from Options and enter the name that you want to search from the contact list.

You can register a new contact address by selecting Add new contact from Options. You can enter the name, different phone numbers, email addresses, groups, image etc using add details option of a new contact.

Settings

You can set the contact list display, copy, move, send contacts via bluetooth, if SD card is inserted then backup and restore contacts also can clear contacts and check memory info.

Groups

You can add your contacts to any of the available groups.

Speed dials

You can assign any of the keys from 2 to 8 with a name and number list entry. You can call directly by pressing this key when you are in idle screen.

Service dial numbers

Use this function to access a particular list of services provided by your network operator (if supported by the SIM card).

Call waiting

Activate: If you select Activate, you can accept a waiting (receiving) call.

Deactivate: If you select Cancel, you cannot recognize the waiting (receiving) call.

View status: Shows the status of Call waiting.

Call reject

Call Reject On/Off: You can set whether to reject incoming calls.

- **Off:** Disables Automatic call reject.

- **Reject on List:** Only rejects target numbers in the list you set. You can set the reject list using Reject List menu.

- **Reject All Calls:** Rejects all calls on list. Or Else User can set Reject list by selecting Contacts, Groups, Unregistered & No caller ID.

Send my number

Set by network:

On: You can send your phone number to another party. Your phone number will be shown on the receiver's phone.

Off: Your phone number will not be shown.

Auto redial

On: When this function is activated, the phone will automatically try to redial in the case of failure to connect a call.

Off: Your phone will not make any attempts to redial when the original call has not connected.

Answer mode

Press send key: If you select this menu, you can receive a call by only pressing the key.

Press any key: If you select this menu, you can receive a call by pressing any key except the end key and the right soft key.

Own number

You can save and check your own number in SIM card.

My business card

This option allows you to create your own business card featuring name and any numbers.

Log

Call log

You can view lists of all outgoing or incoming calls.

Missed calls

You can view the unanswered calls.

Free call timer - This menu allows keep track of free call minutes. Once you enter the minutes available, the device will keep track of free minutes.

The device will automatically start subtracting minutes that you've used when you're in a phone call.

Minute minder - Determines whether to sound when you are on the call for every selected minute.

BT answer mode - Select Hands-free to be able to answer a call using a Bluetooth headset, or select Handset to press a key on the handset to answer a call.

Save new number - Select Yes to save a new number.

Voice clarity - Minimizes surrounding noise when you're in a phone call. Select On or Off.

Phone

Allows you to set the phone.

Auto key lock - You can make the key pad locked automatically after some time.

Settings

Profiles

You can adjust and customize the phone tones for different events, or environments.

Display

You can change settings for the phone display.

Date & time

You can set functions relating to the date and time.

Connectivity

Bluetooth - You can adjust setting on BT connection.

USB Connection Mode - You can transfer files from/to a compatible PC to the memory in your phone using the Mass Storage Mode.

Access points

This menu shows the access points list. You can create new profiles, delete or edit them by using the options menu. However, you cannot delete or edit default configurations.

Packet data conn.

If you select the 'When available' option, your phone is automatically registered to a GPRS network when you switch the phone on. If you select 'When needed', the GPRS connection is established for the duration of a WAP or application connection.

Security

This menu allows you to set the phone's safety.

PIN code request - You can set the phone to ask for the PIN code of your SIM card when the phone is switched on.

Handset lock - You can use a security code to avoid unauthorised use of the phone.

Call

You can set the menu relevant to a call.

Call divert - The Call divert service allows you to divert incoming voice calls to another number. For details, contact your service provider.

All voice calls: Diverts voice calls unconditionally.

When busy: Diverts voice calls when the User is in another call.

No answer: Diverts voice calls when you do not answer.

Not reachable: Diverts voice calls when the phone is switched off or out of coverage.

Call barring - The call barring service prevents your phone from making or receiving certain category of calls. This function requires the call barring password.

Fixed dial numbers - You can restrict your outgoing calls to selected phone numbers. The numbers are protected by your PIN2 code.

Turn On: You can restrict your outgoing calls to selected phone numbers.

Lock if SIM is changed - Set the lock function if SIM changed.

Change codes - PIN is an abbreviation of Personal Identification Number to prevent use by unauthorised persons. You can change the access codes: Security code, PIN code, PIN2 code.

Memory info

You can check free space and memory usage of phone, SIM card and external memory (if inserted).

Restore factory settings

You can initialize all factory defaults. You need Security code to activate this function.

Gallery

My memory card

If your phone has a memory card in the card slot, you can save images, sounds, and videos onto it.

My images

Shows the list of image files.

My sounds

Saved audio files are displayed in the list.

My videos

Displays the list of video files.

My games & apps

You can access a great selection of games and applications on your phone.

Others

When you receive files of an undefined format via email, the files are saved in this folder.

Media

Camera

You can take photos with the built in camera and adjust its settings to suit your needs.

Video

You can record a video clip through the built-in camera.

Music

Using the songs in your phone, you can easily enjoy various music.

FM radio

You can listen to FM radio with your external earphone.

Voice recorder

You can record voice memo.

Ringtone creator

This function allows you to create your own personal ringtones by using this tool.

Organiser

Alarm clock

You can set five alarm clocks to go on at a specified time.

Calendar

You can see the calendar and add hundred events here in selected date.

To-do list

You can view, edit and add hundred tasks to do.

Notes

You can add fifty new notes, view and manage saved notes.

Secret notes

You can add fifty secret notes. You need to enter the security code to use this menu to protect your secret notes privacy.

Calculator

The calculator provides the basic arithmetic functions: addition, subtraction, multiplication and division. You can also use the available functions like Sin, Cos, tan, log, ln, exp, %, x^2, x^y, sqrt, +/-, deg and rad.

Stopwatch

This option allows you to use the function of a stopwatch.

Date finder

You can count the target date by adding(After) days.

Converter

This converts any measurement into a unit you want. There are many types that can be converted into units: Currency, Area, Length, Weight, Temperature, Volume, Velocity.

World time

The World time function provides time information on major cities worldwide.

Go to

It helps you to go to the menu you search for. You can set the item as Go to.

Applications

You LG-S310 comes with preloaded games to keep you amused when you have time to spare. If you choose to download any additional games or applications they will be saved into this folder. Press Menu and select Applications. Choose My games & apps.

Note: An additional cost is incurred when connecting to this service. Check your data charges with your network provider.

Web

Tesco Mobile

Connects to a homepage. The homepage will be the site which is defined in the activated profile.

Electronic devices

All mobile phones may get interference, which could affect performance.

- Do not use your mobile phone near medical equipment without requesting permission. Avoid placing the phone over a pacemaker, i.e. in your breast pocket.

Road safety

Check the laws and regulations on the use of mobile phones in the areas when you drive.

- Do not use a hand-held phone while driving.
- Use a hands-free kit, if available.
- Pull off the road and park before making or answering a call if driving conditions so require.

Bookmarks

This menu allows you to store the URL of favorite web pages for easy access at a later time.

Facebook

Home: Log in and you will see your friend's updated status. Input your comment about new status or check others.

Twitter

Twitter is a microblogging service that enables its users to send and read messages known as tweets.

Note: Facebook & Twitter features are data intensive application. An additional costs may be incurred when connecting and using online services. Check your data charges with your network provider.


Last web address

This menu shows the history of recently browsed pages.

Settings

You can set the profile, appearance settings cache and security related to internet service.

Go to address

You can connect directly to the site you want. After entering a specific URL, press  key to make the connection done to connect to the site.

Saved pages

Allows you to view your saved web pages.

Phone Software update

LG Mobile Phone Software update from internet

For more information on using this function, please visit the [http:// update.lgmobile.com](http://update.lgmobile.com) or <http://www.lg.com/common/index.jsp> ----> select country.

This Feature allows you to update the firmware of your phone to the latest version conveniently from the internet without the need to visit a service centre.

PC Sync

- Go to www.lgapplication.com and choose your country.
- Select Manual & Software Download and click Download to Download LG Mobile Support Tool to PC.
- Follow the instructions on screen to complete the LG PC Suite Installation on your PC.

Battery information and care

- You do not need to completely discharge the battery before recharging. Unlike other battery systems, there is no memory effect that could compromise the battery's performance.
- Use only LG batteries and chargers. LG chargers are designed to maximise the battery life.
- Do not disassemble or short-circuit the battery pack.
- Replace the battery when it no longer provides acceptable performance. The battery pack may be recharged hundreds of times before it needs to be replaced.
- Do not expose the battery charger to direct sunlight or use it in high humidity, such as the bathroom.
- Risk of explosion if battery is replaced by an incorrect type.
- Dispose off used batteries according to the manufacturer's instructions.

In aircraft

Wireless devices can cause interference in aircraft.

- Turn off your mobile phone before boarding any aircraft.

Children

Keep the phone in a safe place out of children's reach. It includes small parts which if detached may cause a choking hazard.

Emergency calls

Emergency calls may not be available under all cellular networks. Therefore, you should never depend solely on the phone for emergency calls. Check with your local service provider.

Accessories

There are various accessories for your mobile phone. You can select these options according to your personal communication requirements.

Standard Battery



Headset



Travel Adapter



Data cable



NOTE

- Always use genuine LG accessories. Failure to do this may invalidate your warranty.
- Accessories may be different in different regions; please check with our regional service company or agent for further enquires.

Exposure to radio frequency energy

Radio wave exposure and Specific Absorption Rate (SAR) information

This mobile phone model LG-S310 has been designed to comply with applicable safety requirement for exposure to radio waves. This requirement is based on scientific guidelines that include safety margins designed to ensure safety of all persons, regardless of age and health.

- The radio wave exposure guidelines employ a unit of measurement known as the Specific Absorption Rate, or SAR. Tests for SAR are conducted using standardised methods with the phone transmitting at its highest certified power level in all used frequency bands.

- While there may be differences between the SAR levels of various LG phone models, they are all designed to meet the relevant guidelines for exposure to radio waves.

- The SAR limit recommended by the International Commission on Non-Ionizing Radiation Protection (ICNIRP) is 2W/kg averaged over ten (10) gram of tissue.

Technical data

Ambient Temperatures

Max.: +55°C (discharging) +45°C (charging)

Min.: -10°C



Disposal of your old appliance

- When this crossed-out wheeled bin symbol is attached to a product it means the product is covered by the European Directive 2002/96/EC.
- All electrical and electronic products should be disposed of separately from the municipal waste stream via designated collection facilities appointed by the government or the local authorities.
- The correct disposal of your old appliance will help prevent potential negative consequences for the environment and human health.
- For more detailed information about disposal of your old appliance, please contact your city office, waste disposal service or the shop where you purchased the product.



Disposal of waste batteries/accumulators

- When this crossed-out wheeled bin symbol is attached to batteries/accumulators of Your product it means they are covered by the European Directive 2006/66/EC.
- This symbol may be combined with chemical symbols for mercury(Hg), cadmium(Cd) or lead(Pb) if the battery Contains more than 0.0005% of mercury, 0.002% of cadmium or 0.004% of lead.
- All batteries/accumulators should be disposed separately from the municipal waste stream via designated collection facilities appointed by the government or the local authorities.
- The correct disposal of Your old batteries/ accumulators will help to prevent potential negative consequences for the environment, animal and human health.
- For more detailed information about disposal of Your old batteries/accumulators, please contact Your city office, waste disposal service or the shop where You purchased the product.

Product care and maintenance



WARNING: Only use batteries, chargers and accessories approved for use with this particular phone model. The use of any other types may invalidate any approval or warranty applying to the phone, and may be dangerous.

- Do not disassemble this unit. Take it to a qualified service technician when repair work is required. Repairs under warranty, at LG's option, may include replacement parts or boards that are either new or reconditioned, provided that they have functionality equal to that of the parts being replaced.
- The unit should be kept away from heat sources such as radiators or cookers.
- Use a dry cloth to clean the exterior of the unit. (Do not use any solvents.)
- Do not keep the phone next to credit cards or transport tickets; it can affect the information on the magnetic strips.

- The highest SAR value for this model phone tested by DASY4 for use at the ear is 0.922W/kg (10g) and when worn on the body is 0.931W/kg (10g).
- SAR data information for residents in countries/regions that have adopted the SAR limit recommended by the Institute of Electrical and Electronics Engineers (IEEE) is 1.6 W/kg averaged over one (1) gram of tissue.

Declaration of Conformity



Supplier Details
Name
1 LG Electronics Plc
Address
LG Twin Tower 25 Haeundae-dong, Haeundae-gu Seoul, Korea 150-721

Model Name
GS08 800 / E-GSM 800 / DCX 1800 / PCS 1800 Quad band Terminal Equipment
Model Name
LG-S310
Trade Name
LG

CE 0168

EU Declaration of Conformity
The conformity to above standards is verified by the following Notified Body(BAT)
SGS BT, Fingert House, Churchfield Road, Watlington-Thames, Surrey, KT12 2TD, United Kingdom
Notified Body Identification Number : 0168

Declaration of Conformity

I hereby declare under our sole responsibility that the product mentioned above to which this declaration refers complies with the above referenced standards and directives.
LG Electronics Logistics and Service B.V.
Molenvest 16, 1527 AE Almere, The Netherlands
Name
Doo Hwang Lee / Director
Issued Date
25. Jan. 2011
Signature of representative